

ABOUT US

The Bryn Mawr School is one of the nation's oldest college-preparatory schools for girls, founded in 1885 by five women determined to provide girls the same educational benefits that boys received. The idea was bold, courageous, and daring for its time. The inaugural curriculum included modern and classical languages, English, history, math, the latest scientific theories, and a focus on physical education—all of which stretched the boundaries of social acceptance. **Today, The Bryn Mawr School is PreK–12 and remains steadfast in its founding mission of rigorous academics and stretching the limits of imagination and acceptance.**

The **Bryn Mawr Online Division**, founded in 2022, brings the excellence of our Upper School to students across the country and around the world, blending academic rigor with the flexibility of learning from any location. Taught live by Bryn Mawr faculty, our courses provide the same challenging Bryn Mawr School curriculum, individualized attention, and supportive community that define the on-campus experience. The Bryn Mawr Online division empowers students to pursue their passions while engaging in a dynamic, college-preparatory education deeply rooted in The Bryn Mawr School tradition. The seven members of the Class of 2026 are the inaugural cohort to graduate from The Bryn Mawr Online Division.

ACADEMIC PROGRAM

Coordination with Gilman School and Roland Park Country School offers junior and senior students more than 40 English and history courses, upper-level STEM electives, and the opportunity to participate in fine and performing arts groups across the three campuses. **Juniors** may elect to complete an ungraded **Independent Capstone/Impact Project** on a topic of their choosing. **Seniors** may apply to the selective **Edith Hamilton Scholars** program, a yearlong, ungraded independent research project that culminates in a 20–30 page paper and a convocation speech to the entire Upper School.

To receive a Bryn Mawr diploma, a student must:

- Carry a minimum of 5 major courses/semester
- Earn a total of 21 credits
- Present a Senior Convocation speech
- Complete an independent senior project
- Complete 50 hours of community service

CREDITS

The Upper School operates on an A-Day/B-Day schedule with three, 80 minute academic class periods each day. Our afternoon program is dedicated to experiential learning, community time, clubs, public speaking, a required dance program and physical activity. **The courses listed below are required. Elective courses complete the 21 credits required to graduate.**

Subject	Credits
English	Required all four years
World Language	3 (6 if double-track is selected)
History	3 (Foundations, Modern, U.S.)
Mathematics	3 (Geometry, Algebra II, Pre-Calculus)
Laboratory Science	3 (Physics, Chemistry, Biology)
Arts	1
Intro to CompSci	0.5
Physical Ed/Dance	1
Public Speaking	0.25

LEADERSHIP & CONTACT INFO

Sue Sadler
HEAD OF SCHOOL

Emily Fetting
UPPER SCHOOL DIRECTOR

Ann Marie Strauss
DIRECTOR OF COLLEGE COUNSELING
straussa@brynmaawschool.org
410.323.1118 ext. 1228

Jason George
ACADEMIC DEAN &
COLLEGE COUNSELOR
georgej@brynmaawschool.org
410.323.1118 ext. 1610

Shanae Giles
ASSOCIATE DIRECTOR
OF COLLEGE COUNSELING
giless@brynmaawschool.org
410.323.1118 ext. 1655

Kate Klein
ASSOCIATE DIRECTOR
OF COLLEGE COUNSELING
kleink@brynmaawschool.org
410.323.1118 ext. 1611

Jiho Kim
COLLEGE COUNSELING ASSISTANT
kimj@brynmaawschool.org
410.323.1118 ext. 1307

THE SCHOOL AT A GLANCE

738

PK-12
ENROLLMENT

337

UPPER SCHOOL
ENROLLMENT

48%

UPPER SCHOOL
FINANCIAL AID

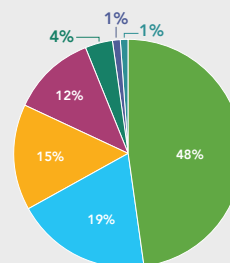
82

MEMBERS OF THE
CLASS OF '26 (CAMPUS)

7

MEMBERS OF THE
CLASS OF '26 (ONLINE)

Upper School
Community



Caucasian/Non-Hispanic	48%
Asian	19%
Black/African American	15%
Multiracial	12%
Latino/Hispanic American	4%
Middle Eastern	1%
Native American/Pacific Islander	1%

2026 National Merit

National Merit Semifinalists5
National Merit Commended14

SAT SCORES

(Class of 2025)

SUBJECT **MID 50%**
Reading/Writing 640–730
Mathematics 580–740
TOTAL 1220–1470

ACT SCORES

(Class of 2025)

SUBJECT **MID 50% COMPOSITE**
Composite 24–32

GRADE AND EQUIVALENTS

Transcript grades are not weighted. Honors and AP courses receive an additional 5 points weighting in the yearly and cumulative GPA calculation. All other courses are college prep level.

A+ 98–100	B 83–86	C- 70–72
A 94–97	B- 80–82	D+ 67–69
A- 90–93	C+ 77–79	D 65–66
B+ 87–89	C 73–76	F Below 65

ADVANCED PLACEMENT/ POST-AP COURSES*

We **strongly recommend students** limit their schedule to no more than three AP courses in 11th grade and three APs in 12th grade. Enrollment in more than three is unusual and prompts administrative approval. Students may be limited in their selection due to scheduling conflicts and enrollment limitations at a small school. Due to prerequisites, most APs are not available until junior/senior year.

AP Courses

- Art History (*Gilman*)
- Biology
- Calculus AB
- Calculus BC
- Chemistry
- Chinese (*Roland Park Country School*)
- Comparative Government & Politics
- Computer Science A
- Computer Science Principles
- Macroeconomics
- Microeconomics
- Environmental Science
- French Language & Culture
- Latin (*Gilman*)
- Music Theory
- Psychology
- Spanish Language
- Spanish Literature (*Gilman*)
- Statistics
- Physics C: Mechanics
- U.S. Government & Politics
- World History: Modern

Post-AP Courses

- Honors Data Structures
- Honors French Seminar (*Gilman*)
- Honors Introduction to Multivariable Calculus
- Honors Latin V: Advanced Readings in Latin (*Gilman*)
- Honors Latin VI: Age of Nero (*Gilman*)
- Honors Latin VI: Epic Poetry (*Gilman*)
- Honors Topics in College Math
- Honors Spanish Seminar

Bryn Mawr Online School*

Due to the youth of the Bryn Mawr Online School division, and the small size of the student body, the following are the AP and Post-AP course offerings per year:

2022–23

- AP Computer Science Principles

2023–24

- AP Computer Science A
- AP Computer Science Principles

2024–25

- AP Calculus AB
- AP Computer Science Principles
- AP Human Geography

2025–26

- AP Art History
- AP Calculus AB
- AP Calculus BC

- AP Computer Science A
- AP Computer Science Principles
- AP Environmental Science
- AP World History: Modern
- AP Psychology
- AP Statistics

Post-AP Courses

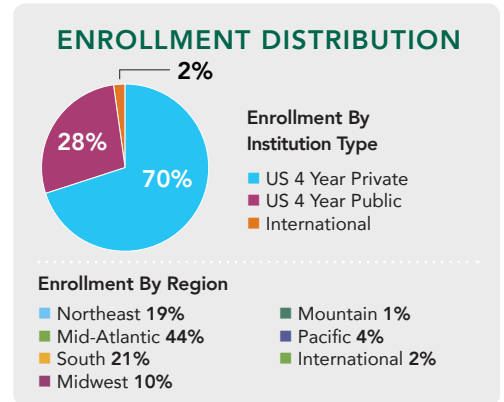
- Honors Advanced Topics in Computer Science

* Bryn Mawr does not offer AP English Language, AP English Literature or AP US History courses. Honors level English electives are offered in Senior Year. There is no Honors level in US History.

MATRICULATION TO COLLEGES AND UNIVERSITIES

Bryn Mawr graduates from the Classes of 2022–2025 matriculated to the following colleges and universities. A **bolded** school name signifies a member of the Class of 2025 as a matriculant. The number in parentheses indicates the number of Bryn Mawr graduates currently in attendance.

- Amherst College (2)**
- Auburn University (2)**
- Babson College
- Barnard College (2)**
- Baylor University
- Binghamton University**
- Boston College (8)**
- Boston University (6)**
- Bowdoin College
- Brandeis University
- Brown University (2)**
- Bryn Mawr College (3)
- Bucknell University (4)**
- Carleton College
- Carnegie Mellon University (3)
- Case Western Reserve University (7)**
- Chapman University**
- Clark Atlanta University**
- Clemson University (4)**
- Coastal Carolina University
- Colby College (2)**
- Colgate University**
- College of the Holy Cross
- Columbia University**
- Connecticut College (3)
- Cornell University (6)**
- Dartmouth College (2)**
- Davidson College (7)
- Denison University
- DePaul University**
- Dickinson College (6)**
- Drexel University (2)**
- Duke University (3)**
- Elon University
- Embry-Riddle Aeronautical University
- Emory University (3)
- Florida Southern College
- Fordham University (2)
- Franklin and Marshall College
- Georgetown University (6)**
- The George Washington University (6)**
- Gettysburg College
- Goucher College (2)**
- Hamilton College
- Hampton University
- Harford Community College
- Harvard University (2)
- Haverford College (2)
- Howard University
- James Madison University**
- Johns Hopkins University (9)**
- Lafayette College
- Lehigh University (2)**
- Loyola University Chicago
- Loyola University Maryland
- Massachusetts Institute of Technology
- McGill University**
- Middlebury College (2)
- Morgan State University
- New York University (8)**
- Northeastern University (6)**
- Northwestern University (2)
- Oberlin College (3)
- Ohio State University
- Ohio University**
- Pace University
- Pennsylvania State University (4)**
- Pomona College (2)**
- Pratt Institute
- Princeton University (4)**
- Providence College
- Purdue University
- Reed College
- Rice University
- Rutgers University-New Brunswick
- Saint Joseph's University (2)**
- St. Mary's College of Maryland (2)
- San Diego State University (2)
- Savannah College of Art and Design**
- Skidmore College**
- Smith College (2)
- Southern Methodist University
- Spelman College
- Stanford University (2)
- Stevens Institute of Technology



- Stevenson University
- Swarthmore College (3)
- Syracuse University (5)**
- Temple University (3)**
- Texas A&M University**
- Texas Christian University
- Towson University
- Trinity College**
- Trinity College Dublin (4)
- Tufts University (4)
- Tulane University of Louisiana (6)**
- United States Naval Academy
- The University of Alabama
- University of California-Berkeley (2)
- University of California-Los Angeles
- University of California-Santa Barbara**
- University of Chicago (2)
- University of Colorado Boulder (2)**
- University of Delaware (7)
- University of Denver
- University of Florida
- University of Illinois at Urbana-Champaign
- University of Maryland-College Park (23)**
- University of Miami
- University of Michigan (6)**
- University of Notre Dame
- University of Pennsylvania (5)
- University of Pittsburgh (2)**
- University of Richmond (2)**
- University of St Andrews**
- University of South Carolina (2)
- University of Southern California (2)**
- The University of Tampa (2)**
- The University of Tennessee-Knoxville
- University of Vermont (3)
- University of Virginia (3)**
- Ursinus College (2)
- Vanderbilt University
- Villanova University (4)**
- Virginia Tech (4)**
- Wake Forest University (3)**
- Washington and Lee University
- Washington College (3)
- Washington University in St Louis (5)**
- Wellesley College (4)**
- Wesleyan University (2)
- West Virginia University**
- Wheaton College
- William & Mary (5)**
- Williams College**
- Wofford College**
- Xavier University of Louisiana
- Yale University (5)

GENDER DIVERSITY AT BRYN MAWR

Bryn Mawr considers for admission all students who identify as girls and would benefit from an educational environment focused on girls. Should a current student no longer identify as a girl, the school will continue to support the child and family as they navigate challenges that may arise in regards to gender, assuming the student shares in the school's mission.