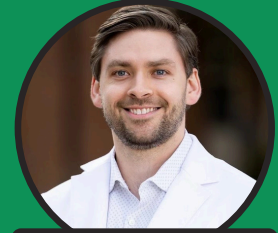




Winton Woods School Based Health Center

HEALTHY STUDENTS. BETTER LEARNERS.



Daniel Perinovic,
MSN, APRN, FNP-C



Dr Kelsey Neal,
DDS

WHAT WE OFFER:

| | | | | | | |
|-------------------------|-----------------|--------------------------------|----------------------------|---|--|---|
| <p>Primary Care</p> | <p>Vaccines</p> | <p>Telehealth Services</p> | <p>Vision Services</p> | <p>Behavioral/ Mental Health Services</p> | <p>Oral Assessments and Sealants</p> | <p>Referrals to other medical providers</p> |
|-------------------------|-----------------|--------------------------------|----------------------------|---|--|---|

Services offered to all Winton Woods students with signed consent forms, staff, family, and community members.

Operated by:  **The HealthCare Connection**
Because Everyone Deserves Quality Healthcare

NOW SCHEDULING APPOINTMENTS FOR STUDENTS AND STAFF

147 FARRAGUT ROAD, SUITE 1020,
CINCINNATI, OH 45218

(513) 766-5570

WWW.HEALTHCARE-CONNECTION.ORG

FREQUENTLY ASKED QUESTIONS:

- **What is a School-Based Health Center?**

A School-Based Health Center (SBHC) is similar to a doctor's office setting, but inside the school. The SBHC offers an integrated team-based care approach centered on whole person wellness with medical, dental, behavioral health, and referral services to ensure each child's needs are met. The SBHC is staffed with a nurse practitioner, behavioral health provider and dental staff during school hours throughout the school year. The SBHC provides an easy way for children to get healthcare who may not have access to any, and a convenient option for parents to get their child checked without having to leave work. These services are offered through The HealthCare Connection in partnership with Winton Woods Schools.

- **Who can be seen at SBHC?**

Any student of the Winton Woods Schools District that has signed a consent form, as well as, staff, family, and community members. We see patients from birth, to end of life.

- **What services are provided at the SBHC?**

The SBHC offers a variety of services include primary care, sports physicals, yearly child well exams, vaccines, oral assessments and sealants, behavioral/ mental health services, referrals to other medical providers, and more.

- **What insurance is accepted at the SBHC?**

The SBHC accepts Medicaid and Medicare plans, as well as Commercial Insurance. Commercial insurances include: Aetna, Anthem, Beech Street, Century Health, Cigna, Fiserv Health, Health Partners, Health Span, Humana, Medical Benefit, Medical Mutual, and United Health Care. Insurance packages may vary and change, so please call (513) 554-4100 for any questions. Patients may be eligible for discounted services based off family size and income. Insurances accepted and assistance with applying for Medicaid available. No one will be turned away based on inability to pay.

Operated by:



To learn more about The HealthCare Connection, please visit www.healthcare-connection.org or call, (513) 588-3623.