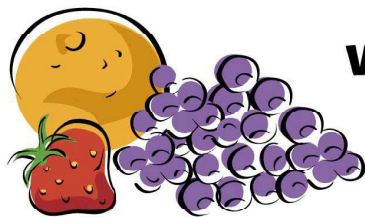


START

your day the right way with **School Breakfast!**



School Breakfast
will give you **MORE** energy,
keep your body healthy
and help improve your grades!

School breakfast is available to all students!
Breakfast locations are in each building's cafeteria

Breakfast times are:

Conneaut Elementary: 8:30 AM - 8:50 AM

Crim Elementary: 8:40 AM - 9 AM

Kenwood Elementary: 8:40 AM - 9 AM

Middle School: 7:20 AM - 7:45 AM

High School: 7:20 AM - 7:45 AM

Menu and pricing are available on our District's website!

