

Planning Your High School Career

Your Decision, Your Choice

Post-College and Career Pathways (CCR) Explained

A graphic featuring the text "BLUEPRINT FOR MARYLAND'S FUTURE" in a bold, blue, sans-serif font. The text is overlaid on a background of a technical blueprint with various lines and drawings. The word "BLUEPRINT" is in a larger font size than "FOR", and "MARYLAND'S FUTURE" is in the same size as "BLUEPRINT".

BLUEPRINT FOR MARYLAND'S FUTURE

All students will enter a Post-College and Career (CCR) Pathway in high school

What is a Post-CCR Pathway?

- Opportunity for students to gain in-depth specialization and exploration in high school
- Opportunity for college credits and/or industry recognized credentials

What options are there for our students?

- Early College/ Dual Enrollment
- Career and Technical Education (CTE) pathways
- Advanced Placement Pathway (starting with class of 2029)



Where Do We Start?

What do I need to learn?

What do I talk to my student about?

Career Exploration in the Schools

Career Exploration
lessons in each
grade



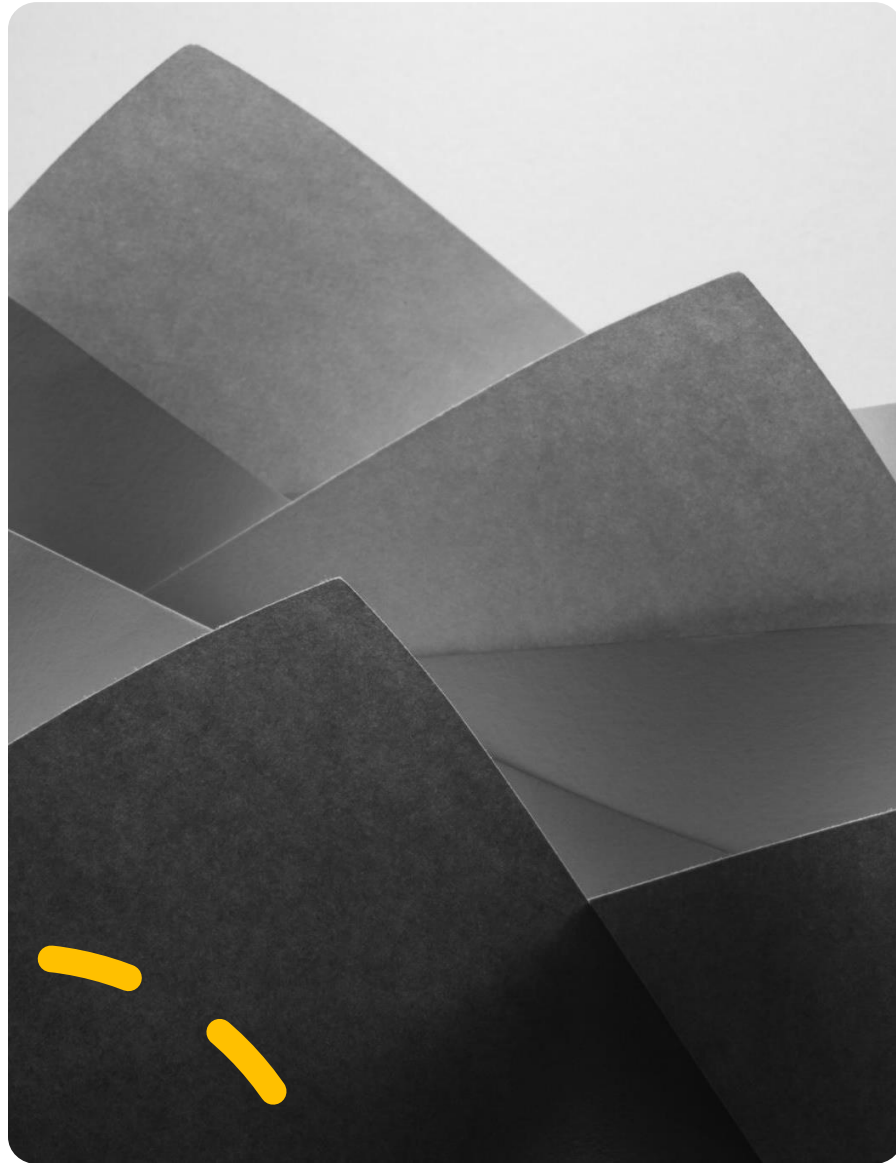
Exploration activities
to support areas of
interest



Lead to informed
course selection and
Post- CCR Pathway
enrollment



Individual career
plans for every
student, starting in
6th grade



CHRISTINA JONES



MD



Westlake High School



Grade 12



Share your profile

CAREER MATCHES

View all



Curator



Professor



Anthropologist



Principal



Xello Matchmaker

- Ask your student to pull up their Xello Matchmaker; what were the results?
- Explore the options identified

What can you learn from Xello?

ABOUT THE STUDENT



PERSONALITY STYLE

Creator / Artistic
Persuader / Enterprising
Helper / Social



LEARNING STYLE

Tactile Learner



LESSONS COMPLETE

1 of 1

TOP 10 CAREER MATCHES

- 1 Artist
- 2 Furniture Finisher
- 3 Visual Merchandiser
- 4 Interior Designer
- 5 Picture Framer
- 6 Director of Photography
- 7 Potter
- 8 Craftsperson
- 9 Exhibit Designer
- 10 Interior Decorator

CLUSTER MATCHES



Arts, Media, and Communication



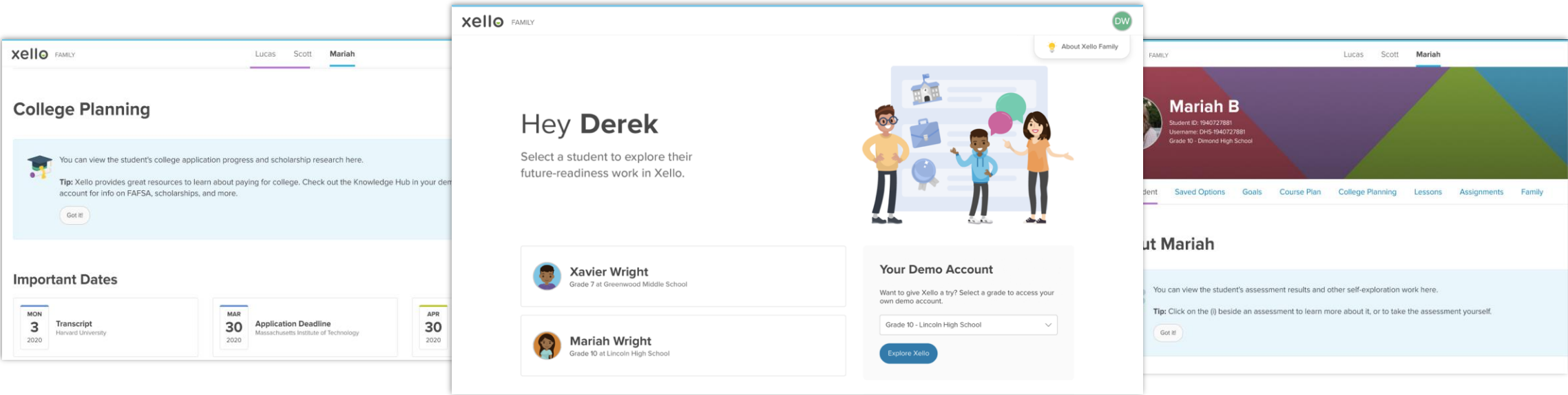
Consumer Services, Hospitality, and Tourism

XELLO FAMILY

An Integrated Family Portal

Full visibility into your child's work

Explore and discover your child's future goals and plans so you can better support their learning and development. If you have multiple children, you can access all of their work in the same portal.



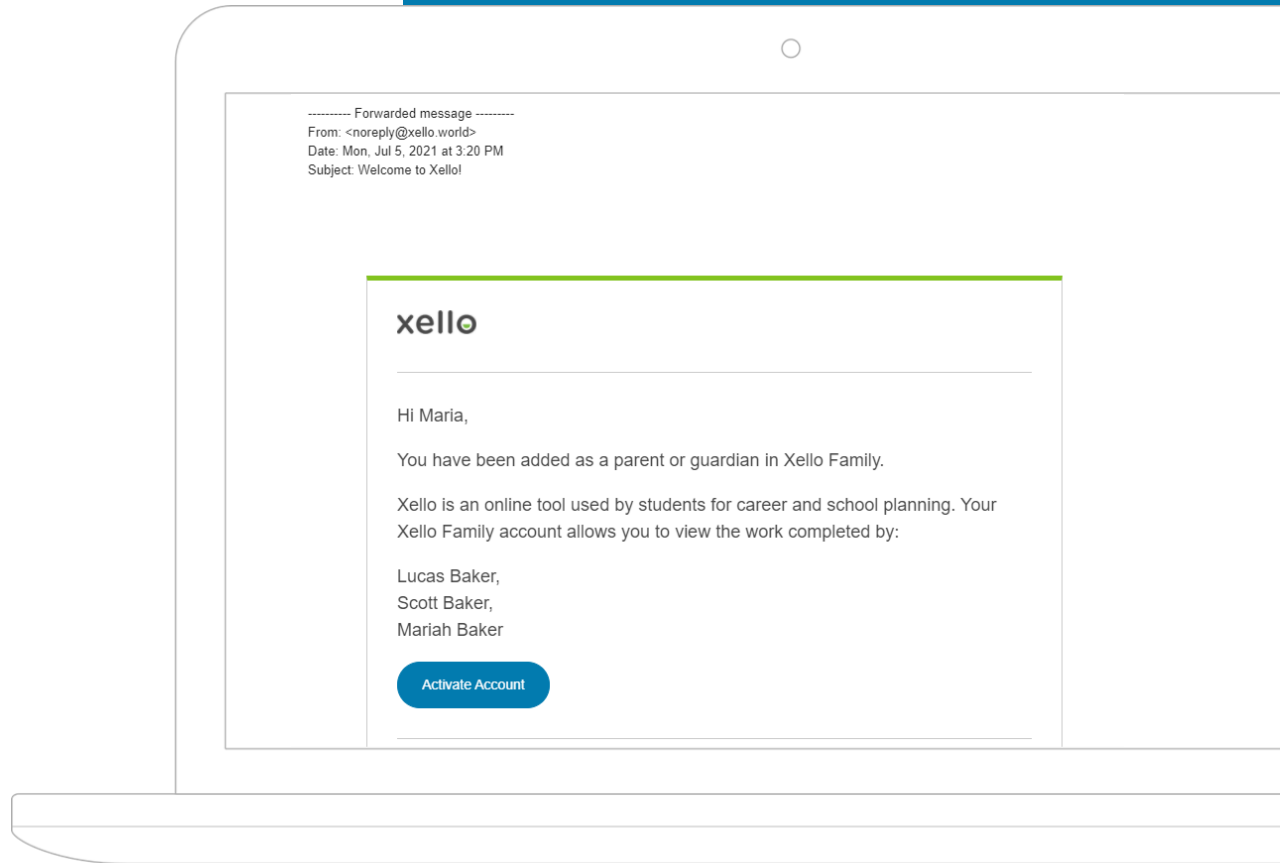
ACCESS YOUR ACCOUNT

Getting Started

Accessing your account

- You received a *Welcome to Xello!* activation email to the address that we have on file.
- Once you click *Activate Account*, you will be redirected to Xello and asked to create a password.

Look for more information from your child's school!



Providing Opportunities
for Students in High
School!

Students are College
and Career Ready
(CCR)

Dual Enrollment/
Early College

Career and Technical
Education (CTE)
Pathway

Advanced Placement
Pathway (starting
with Class of 2029,
current 9th graders)

Even more
details at
the CSM
Information
Sessions!

What is Early College and Dual Enrollment?

Opportunity for students to earn college credits while in high school

Partnership with the College of Southern Maryland

Free to high school students

Open for eligible 11th and 12th grade students

Able to earn high school credits from college courses at the same time as earning college credits.

2025-2026

Dual Enrollment:

- ❖ Special Admissions Program available to CCPS juniors and seniors
- ❖ Offered both in-school and on-campus/online
- ❖ Students work with a CSM enrollment coordinator to pick classes based on interest or need
- ❖ Students attend high school part-time or full-time
- ❖ Parents/students must provide their own transportation
- ❖ Students can take up to 4 classes per year
- ❖ Students sign up through course selection at the high school and then go through the College of Southern Maryland application process

Dual Enrollment Information Session

Wednesday, October 22nd at 6pm

(virtual meeting)

To RSVP and receive the virtual Zoom meeting link, visit [Event Summary](#)

[Dual Enrollment \(csmd.edu\)](#)

2025-2026

Early College

- ❖ Special admissions program available to CCPS juniors and seniors
 - Seniors-General Studies Transfer Certificate
 - Juniors-Business Administration associates, or choice of 2 CTE Certificates in Health Sciences (Medical Coding and Pharmacy Technician)
- ❖ All day program with most classes in-person on a CSM campus
- ❖ Students apply and are registered by admissions into pre-selected classes to meet high school and college requirements
- ❖ Students attend CSM full-time (12+ credits each semester)
- ❖ CCPS provides transportation
- ❖ Students take the required number of courses to complete their program

Early College Details

Early
College
Program
(csmd.edu)

Early College Information Session

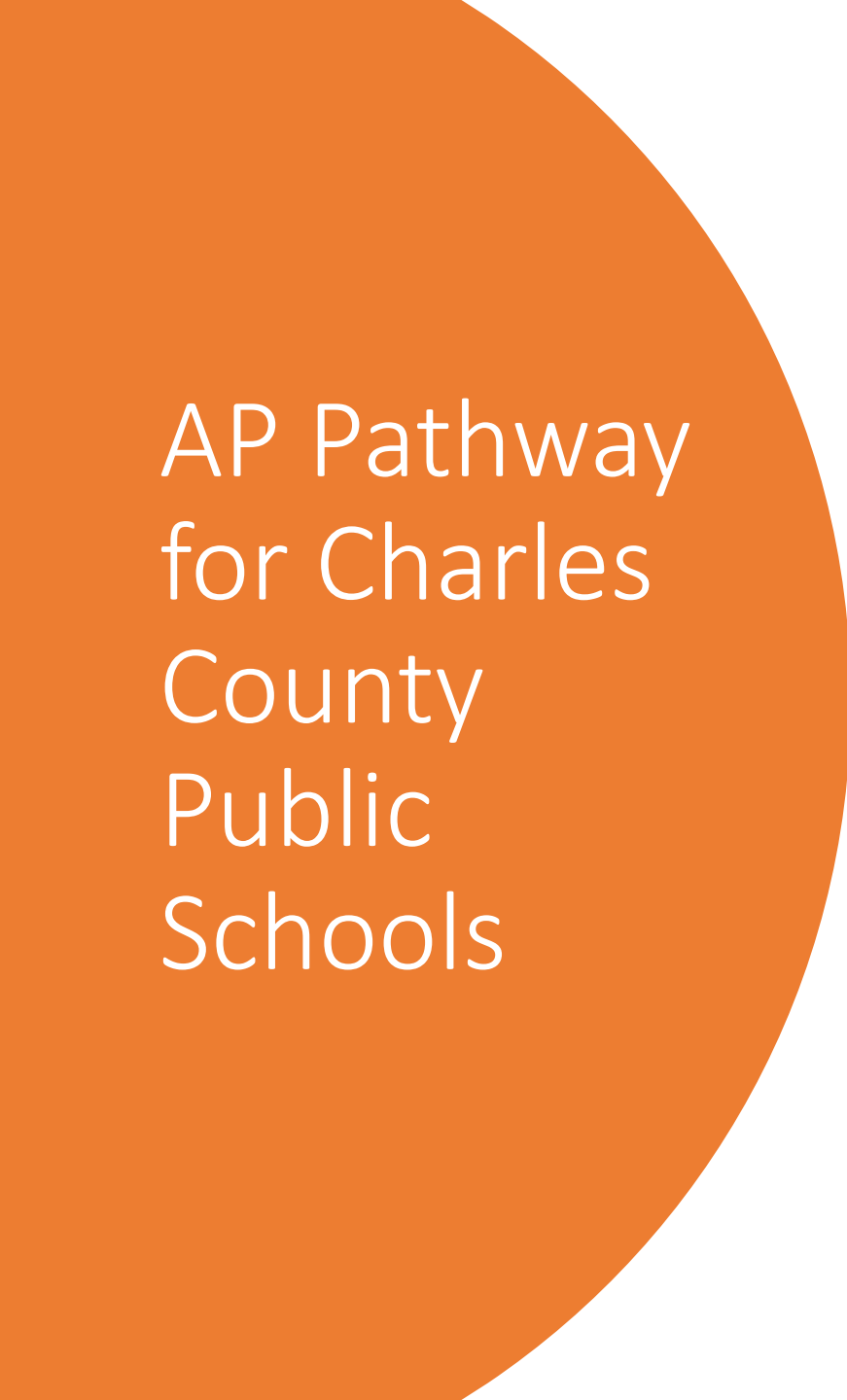
Information will be coming shortly!

Early College Application opens: December 16, 2025

Early College Application closes: January 18, 2026

Look for advertisements! Additional information sessions at high schools will be scheduled soon.


Information will be sent through Synergy and posted on Social Media.

A large orange circle is positioned on the left side of the slide, partially cut off by the edge.

AP Pathway for Charles County Public Schools

What is the AP Pathway?

The Advanced Placement (AP) Pathway helps students prepare for college by taking challenging courses in high school and earning college credits. Here's what your student needs to know...

A series of four yellow dashed line segments are arranged in a curved, upward-pointing arc in the bottom right corner of the slide.

Requirements for the AP Pathway

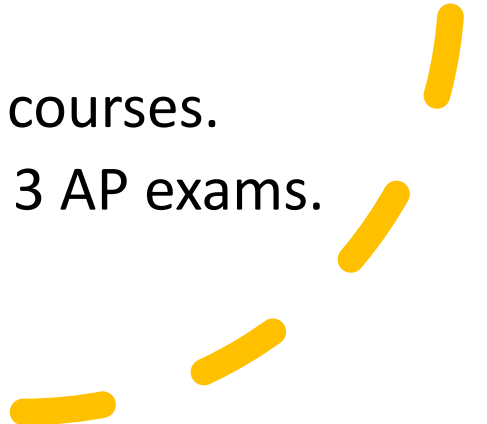
Minimum Number of AP Courses

- Your student needs to complete **5 AP courses**.

Specific Course Requirements

- At least **2 courses in the same subject** (e.g., English, Math, Science).
- Courses must cover at least **2 different subject areas**.

Grade & Exam Requirements

- A grade of **C or higher** in all 5 AP courses.
 - A score of **3 or higher** on at least 3 AP exams.
- 

Charles County AP Course Options

English/Language Arts and Research

- AP English Language, AP English Literature, AP Seminar (English II)

Mathematics

- AP Calculus AB/BC, AP Precalculus, AP Statistics

Science

- AP Biology, AP Chemistry, AP Physics (1, 2, C), AP Environmental Science

Social Studies

- AP U.S. History, AP Government, AP World History, AP Psychology, AP African American Studies


Arts, Computer Science, World Languages

- AP 2-D/3-D Art, AP Music Theory, AP Computer Science, AP Spanish, AP French, AP Latin
- 



Why choose the AP Pathway?

By completing AP courses, your student can earn college credits while still in high school, get a head start on their college career, and improve their college applications!



What is Career and Technical Education (CTE)?



Series of courses that are a graduation pathway



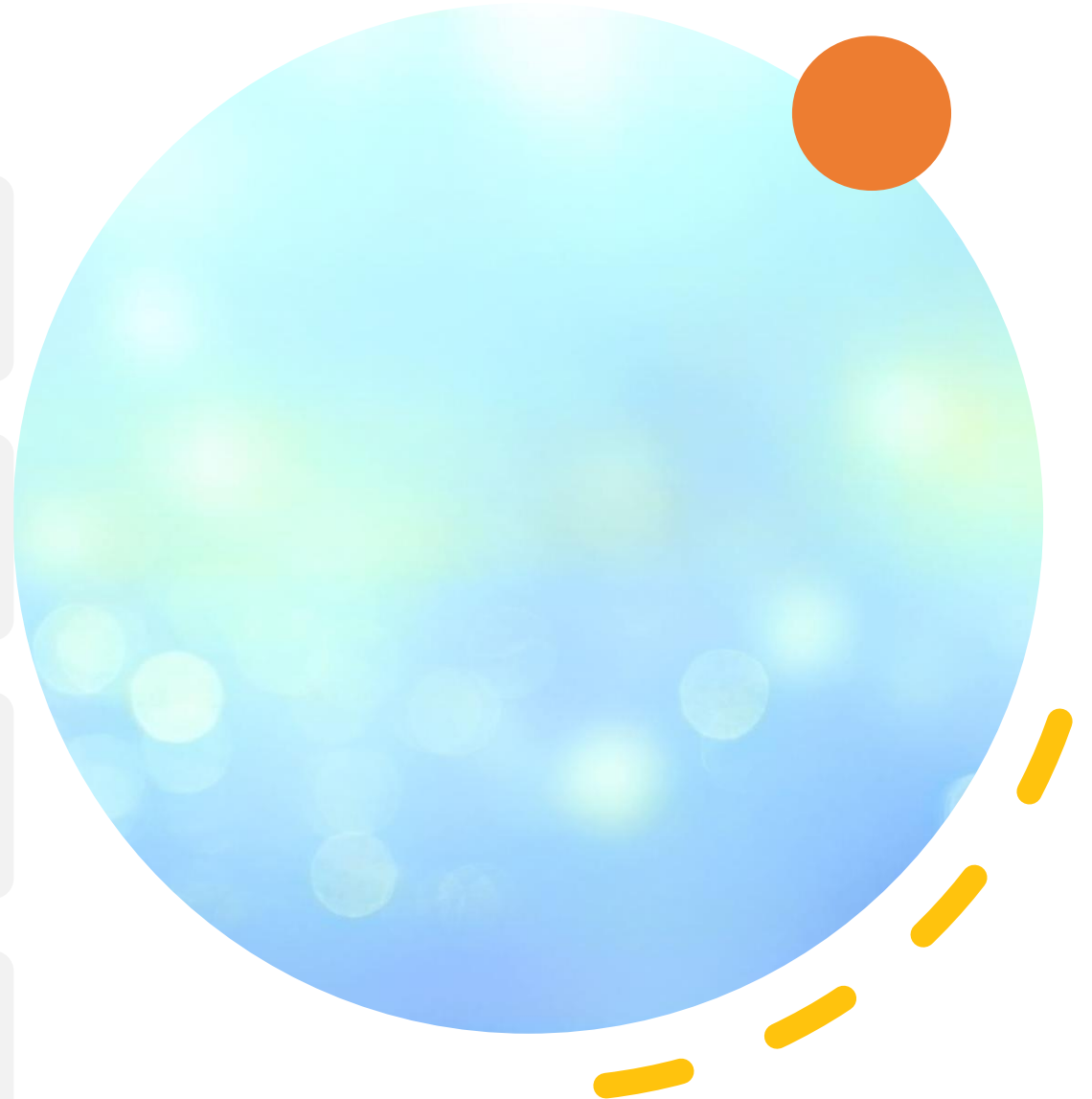
Focus on a certain career field



Offers expertise, experience, certifications, and college credits while in high school



Opportunities for internships, apprenticeships, and jobs!





[Career and Technical Education Video Link](#)

CTE Pathways offered in Charles County Public Schools

Arts, Media, and Communication	Business Management and Finance	Information Technology
<ul style="list-style-type: none"> Graphic Communications Interactive Media Production Theatre Dance 	<ul style="list-style-type: none"> Business Management 	<ul style="list-style-type: none"> IT Networking Academy Cyber Security Computer Science
Consumer Services, Hospitality, and Tourism	Health and Biosciences	Human Resources Services
<ul style="list-style-type: none"> Barbering Culinary Arts (ACF) Food and Beverage Management (ProStart) Cosmetology 	<ul style="list-style-type: none"> Academy of Health Professions <ul style="list-style-type: none"> Certified Clinical Medical Assistant Pharmacy Technician Physical Rehabilitation PLTW Biomedical Sciences Biotechnology 	<ul style="list-style-type: none"> Maryland Fire and Rescue Institute (MFRI) Criminal Justice Child Development Professions Teacher Academy of Maryland (TAM) JROTC
Construction and Development	Manufacturing, Engineering, and Technology	Transportation Technologies
<ul style="list-style-type: none"> Construction Design and Management Heating, Ventilating, and Air Conditioning (HVAC) Electrical Technology Welding Technology 	<ul style="list-style-type: none"> Drafting and Design PLTW Pathway to Engineering STEM/Engineering Pathway 	<ul style="list-style-type: none"> Automotive Technician (NATEF) Collision Repair
Career Research and Development	Environmental, Agricultural, and Natural Resources	Apprenticeship Maryland
<ul style="list-style-type: none"> Career Research and Development (CRD) 	<ul style="list-style-type: none"> CASE: Natural Resources 	<ul style="list-style-type: none"> Apprenticeship Maryland (AMP)

8 th Grade Fall/Winter Online Application Required	8 th Grade Course Selection with Counselor	10 th Grade Fall/Winter Online Application Required	10 th Grade Course Selection with Counselor
<ul style="list-style-type: none"> Academy of Health Professions <ul style="list-style-type: none"> Certified Clinical Medical Assistant Automotive Technician Biotechnology Cisco: IT Networking Child Development Professions Collision Repair Construction Design and Management Cosmetology Criminal Justice Culinary Arts (ACF) Cyber Security Dance Drafting and Design Electrical Technology Graphic Communications Interactive Media Production PLTW: Biomedical Science PLTW: Pathway to Engineering Theatre Welding Technology 	<ul style="list-style-type: none"> Business Management Computer Science Food and Beverage Management (ProStart) Teacher Academy of Maryland (TAM) JROTC (branch varies based on school) 	<ul style="list-style-type: none"> Academy of Health Professions <ul style="list-style-type: none"> Pharmacy Technician Physical Rehabilitation Automotive Technician Barbering CASE: Natural Resources Heating, Ventilating, and Air Conditioning (HVAC) Maryland Fire and Rescue Institute (MFRI) 	<ul style="list-style-type: none"> Business Management Career Research and Development (CRD) Computer Science Food and Beverage Management (ProStart) Teacher Academy of Maryland (TAM)

Make the Connection

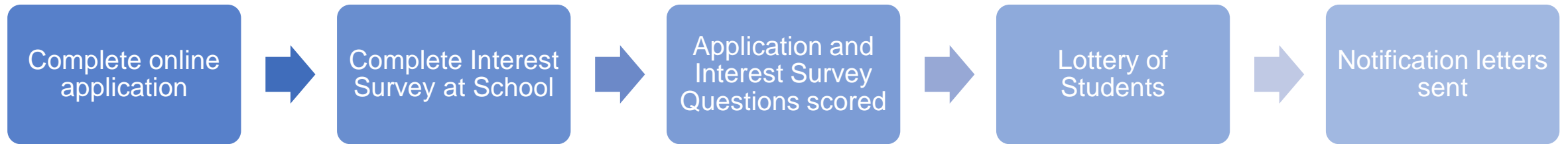
- What programs in the high school connect to the interests and strengths identified in Matchmaker?
- How can I learn what CCPS has to offer?



<https://www.ccboe.com/cte/>

[CTE Showcase Website](#)

Application Process



Scores are made based on the following criteria:

- ✓ **60% Interest Survey Responses**
- ✓ **25% Grades in core subject areas**
- ✓ **10% Xello lesson completion**
- ✓ **5% Program student applies to matches the career cluster identified in Xello**



Online CTE Application Information

Application for 8th Grade programs:

- You will receive an email reminder through Synergy.
- Links will be posted on the CCBOE website as well.
- The online application window opens: October 23, 2025, at 3:00 PM.
- Application deadline: November 13, 2025 at 5:00 PM.
- STUDENTS MUST COMPLETE THE APPLICATION!

Want to
learn more?
Visit the
Open
House/
Spotlight
Night!

Spotlight on CTE!

**North Point High School
October 22nd 6:00 PM**

**McDonough High School
October 23rd 6:00 PM**

**Students and parents get to see
the classrooms, meet the
teachers, and learn about the
program in more detail**

Early College Application Window:

December 16th through
January 18th

Dual Enrollment Application Window:

Winter/Spring of 2026

CTE Application Window:

October 23rd at 3:00 PM to
November 13th at 5:00 PM



Parent/Guardian To-Do List:

1

Ask your child to see their Xello results.

2

Use Xello to drive your student's decisions with course selection and applications process.

3

Visit the Early College/ Dual Enrollment and CTE websites to learn more information.

4

Visit the "Spotlight on CTE" night for more information.

5

Help your student apply to ANY programs they are interested in. They can always decline an offer, but they can not apply after windows close.