

Walled Lake Schools 2024-25 Annual Report

Michael A. Lonze, Ph.D.
Superintendent of Schools

Walled Lake Schools' Annual Report is published by:
Department of Community Relations
Educational Services Center
850 Ladd Road, Building D
Walled Lake, MI 48390

Daniel Durkin
Director
Phone: (248) 956-2017
E-mail: DanielDurkin@wlcsd.org

Jason Lewis
Communications Specialist
Phone: (248) 956-2019
E-mail: JasonLewis@wlcsd.org

Pam Cole
Marketing Specialist
Phone: (248) 956-2018
E-mail: PamelaCole@wlcsd.org

Revenues
\$192,953,059

Foundation Grant
Per Pupil
\$9,754

School Millage Rates
Operating
0.3086 mills
Homestead/
Hold Harmless*

17.6914 mills
Non-Homestead

6.3086 mills
Commercial Personal

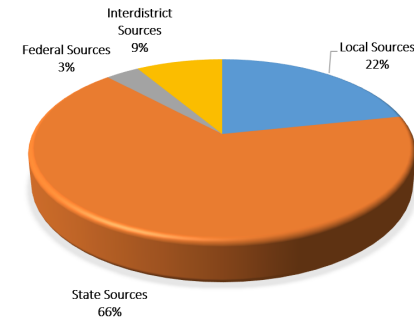
Sinking Fund
0.4981 mills
(All properties)

Debt
4.0500 mills

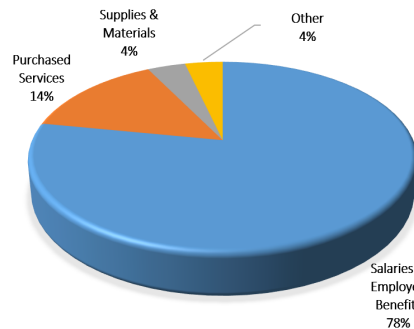
Expenditures
\$188,593,577

*Hold Harmless is the local tax that some districts are allowed to levy to be able to sustain the level of funding provided prior to Michigan's 1994 Proposal A.

2024-25 Revenues



2024-25 Expenses



2024-25 HIGHLIGHTS

Opening the brand-new academic wing at WL Western.

Receiving the Meritorious Budget Award from the Association of School Business Officials for the 21st consecutive year.

Approving the replacement of the operating millage designed to provide operating revenue, with no additional cost to taxpayers.

Finishing Phase V bond work on three District buildings.

Continuing a tradition of generous giving at every school supporting many local, national and global organizations.

Congratulating National Merit Scholar **Vidya Vuyyuru**, WL Western.

Recognizing the WL Central Unified Program and coach **Toni Brubaker-Flood** as Most Improved by the Special Olympics of Michigan.

WALLED LAKE SCHOOLS Annual Report 2024-25




2024-25: District progress and achievements

The 2024-25 school year was filled with bond construction progress; innovative learning; academic, performing arts and sports accomplishments; and celebrations of students, staff and retirees.

Phase V of the 2019 Bond included the completion of the new academic wing at WL Western, as well as renovations to WL Central, the WL Outdoor Education Center and the Operations facility. Phase VI will include additional updates at WL Western, as well as renovations to WL Northern.

The facility study committee was originally formed in 2023 to ascertain each building's usage and whether or not the District's facilities footprints aligned with current and future needs. The committee met again in the 2024-25 school year to determine the next steps, which included repurposing a middle school. The recommendation, which was approved by the Board of Education in December, was to repurpose James R. Geisler Middle School. The feeder pattern for the three middle schools can be found on the District website.

Students, staff, parents and community members earned too many awards and accolades to mention them all in this Annual Report. Community members are encouraged to review all the information on the District website, wlcsd.org.

Mission Statement

The mission of Walled Lake Schools, in partnership with parents and community, is to become the best educational system in America so all students demonstrate they are caring, responsible and knowledgeable citizens.

WLCSD Board of Education



Sincerely,



Michael A. Lonze, Ph.D.
Superintendent of Schools



2025 Board of Education

Stephanie Kaplan.....President
Marc Siegler.....Vice President
Susie Crafton.....Secretary
Michael Smith.....Treasurer
Ron Lippitt.....Trustee
Lisa West.....Trustee
Dr. Andrea Zellner.....Trustee

 www.wlcsd.org

 info@wlcsd.org

 facebook.com/wlcsd

 [/walledlkschools](https://www.youtube.com/wlcsd)

 [/walledlkschools](https://www.instagram.com/wlcsd)

 [@walledlkschools](https://twitter.com/wlcsd)

Elementary Schools

Commerce	Mary Helen Guest
Dublin	Meadowbrook
Glengary	Oakley Park
Hickory Woods	Pleasant Lake
Keith	Walled Lake
Loon Lake	Wixom

Middle Schools

Clifford H. Smart
Sarah G. Banks
Walnut Creek

High Schools

Central
Northern
Western

Early Childhood
Early Childhood Center

Department Contacts

Athletics(248) 956-2073
Business Services(248) 956-2008
Community
Education(248) 956-5000
Community
Relations(248) 956-2018
Enrollment(248) 956-2086
Facility Rental(248) 956-3061
Foundation for
Excellence(248) 956-2116
L.A.Y.A.(248) 956-5070
Outdoor Education.....(248) 956-5121
Preschool(248) 956-5080
Prime Time Care(248) 956-5110
Schools of Choice(248) 956-2085
Special Services(248) 956-2160
Transportation(248) 956-3090
Transportation Late Bus
Hotline(248) 956-5199

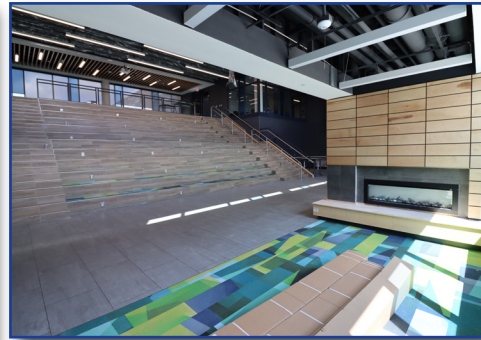
www.wlcsd.org

How are students assigned to the schools?

Students are assigned to buildings by specific street address and geographical areas as predetermined by the administration and Board of Education.

WL Western's brand-new academic wing opened in fall of 2024

Bond work continues across the District with the most notable project being the new academic wing at WL Western. This addition opened in the fall of 2024. Information related to the 2019 Bond progress information can be found at wlcsd.org/bond.



The WL Marching Band claims State Championship

The Walled Lake Competitive Marching Band (WLMB) shined in November at Ford Field claiming the MCBA Flight 1 State Championship with an incredible performance of its program, *Enchanted*.

The combined marching band from WL Central and WL Western beat out the 6-time defending state champion, Rockford. The band took home four of five caption awards in General Effect, Visual, Auxiliary and Percussion. It's also the District's first state championship since WL Central won in 2013.

"The Walled Lake Marching Band is truly comprised of the most dedicated, focused, and hard-working individuals," said co-director **Grant Prater**. "While I was thrilled to see that their dedication, artistry, and commitment to getting better was reflected in the judges scores and caption awards, I just love that I get to work with these students and see their personal growth every day. I could not be more proud of them, and I am so lucky I get to teach in Walled Lake."

The WLMB was one of just 35 teams out of over 100 bands that performed to advance to the semifinals at the Grand National Championship in Indianapolis where they finished 15th in the nation.



Graduation rates

Walled Lake Schools' 2023-24 graduation rate, the most current available, is 93.66%. The 2022-23 graduation rate was 93.71%. The Michigan Department of Education has developed a new method for calculating the graduation rate using a four-year cohort formula. This system tracks students from the year they enter ninth grade until they graduate.

WL Central: 93.16 %
 WL Northern: 95.01 %
 WL Western: 92.28 %

Enrollment		
Level	Oct. 2023	Oct. 2024
Elementary	5,582	5,318
Middle	2,723	2,739
High	3,802	3,517

WL Western Pink Out raises over \$40,000 in 13th annual event



Sarah Piggott, honorary captain
 (Photo: Teresa Presty Photography)

WL Western hosted the 13th annual *Warriors for Warriors* (W4W) Pink Out fundraising event in October. There was a Warrior parade and a jersey honoree ceremony. W4W has honored close to 1,000 cancer warriors. Honorees have reported that this event is special and meaningful for them and their families. This year, the football pink out and other sports pink out games, plus donations, have raised over \$40,000. In the last 12 years, W4W has raised over \$740,000 for Angels of Hope Michigan and St. Baldrick's Foundation for Pediatric Cancer.

Former Walled Lake Consolidated Schools PTSA president and staff member, **Sarah Piggott**, was this year's honorary captain. Piggott received her cancer diagnosis in March, but never wavered in her determination to beat the disease while actively advocating for our schools.

For more information about the event or to make a donation, visit warriorsforwarriors.net.

WLN Alumnus sets Guinness Record while raising money for a cause close to his heart



WL Northern graduate **Zach Brunet** (2019) hit the greens at Eagle Crest Golf Course in Alma, Arkansas in the spring for a round of golf that would be unmatched by anyone before. Brunet, along with **Derek Frail**, **Alex Graziani**, **Lex Mickle** and **Philip Robertson**, set out to endure 24 hours on the course to raise money for the Phelan-McDermid Syndrome Foundation.

Phelan-McDermid Syndrome is a rare genetic condition that causes developmental delays, speech delays, behavioral problems, and a weakened or no ability to feel pain or sweat. The cause is close to Brunet's heart. His older sister, **Ashlyn**, who is currently a student in the District's Adult Transitions Program, suffers from Phelan-McDermid Syndrome.

"I obviously love her very much, and to be able to do something like this for the foundation that supports her is really special to me," said Brunet. "It was truly an awesome experience to not only do something for the foundation and raise a bunch of money for my sister, but also do the 24 hours."



The goal was to raise \$10,000, however, they well exceeded that mark totaling \$12,145.68. Brunet and his fivesome started their round at 8 a.m. on April 12. Over the next 24 hours, they'd set a new Guinness World Record playing 200 holes of golf while walking, shattering the previous record of 180 holes. They also covered over 65 miles and climbed more than 8,000 feet of elevation during that span, which is nearly two and a half marathons and almost a third of the way up Mount Everest.

Pictured top: Zach Brunet, WLN alumnus, and his sister, Ashlyn, who is currently a student in the WLCSO Adult Transitions Program and suffers from Phelan-McDermid Syndrome. Pictured bottom: Zach with his Guinness Book of World Records certificate.

District completes Facility Study, James R. Geisler Middle School to be repurposed



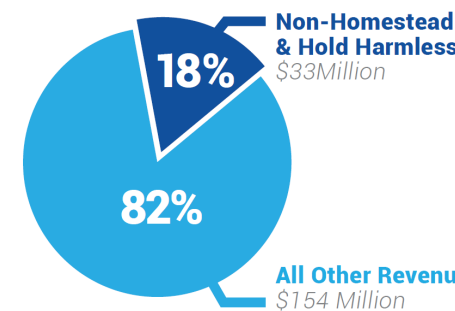
With the community's strong support of the 2024 Bond, the WLCSO Facility Utilization Review Committee reconvened in the fall of 2024 to determine which middle school would be repurposed. After a thorough review of key data points, the committee overwhelmingly recommended James R. Geisler Middle School for repurposing. Following this recommendation, District administration conducted extensive planning to assess feasibility, including elementary school alignment, transportation adjustments, and projected student enrollment.

During the Board of Education meeting in December 2024, the Board voted to move forward with this plan as part of the District's Facility Utilization efforts. At the conclusion of the 2024-25 school year, James R. Geisler Middle School began its transformation to serve the community in a new capacity.

The District is committed to ensuring a smooth transition for all students and families impacted by the shift to three middle schools. The focus remains on providing a high-quality educational experience and supporting students every step of the way.

Walled Lake Consolidated Schools' residents approve operating millage replacement

2024 / 2025 BUDGETED REVENUE



Walled Lake Consolidated School District's (WLCSO) residents approved the replacement of the operating millage designed to provide operating revenue, with no additional cost to taxpayers, in November.

Every public school district in the state is expected to levy operating millage funds to receive full state funding. Since the approval of Proposal A in 1994, the WLCSO community has overwhelmingly supported the operating millage.

The non-homestead operating millage restored the millage rate to the 18-mill millage last approved by WLCSO voters in 2014. The 18-mill millage provides about \$31 million of the school district's annual operating budget which is almost 18% of the operating budget.