

2025-2026 Instructional Materials Adoption

Presented to American Indian Ed PAC
October 8, 2025



What We Believe

Family voice when considering learning materials is incredibly valuable

Families bring perspectives about their children and their learning needs that need to be considered when making decisions about learning materials



What is our process?

- Recruit members of the selection committees
- Committees review available materials to choose which to pilot/evaluate
- Committees receive support/training
- Pilot/evaluation periods occur in fall
- Input is collected from the committees, students, staff, family and community members, aligned to our Key Indicators for materials selection



Our process, continued.

- Committees meet in January to review input and make recommendations
- Recommendations are reviewed by Curriculum and Standards. If approved, they recommend to the Board.
- Board reviews the recommendations and if approved, the Board adopts the materials.



Participate in the
review!



Which courses will have new materials?

History Social Science

- Advanced Placement (AP) Human Geography
- Advanced Placement (AP) Psychology
- Advanced Placement (AP) African American Studies
- Chicano Studies
- United States History
- World History

Math

- Grades TK-5 Math
- Grades 6-8 Math

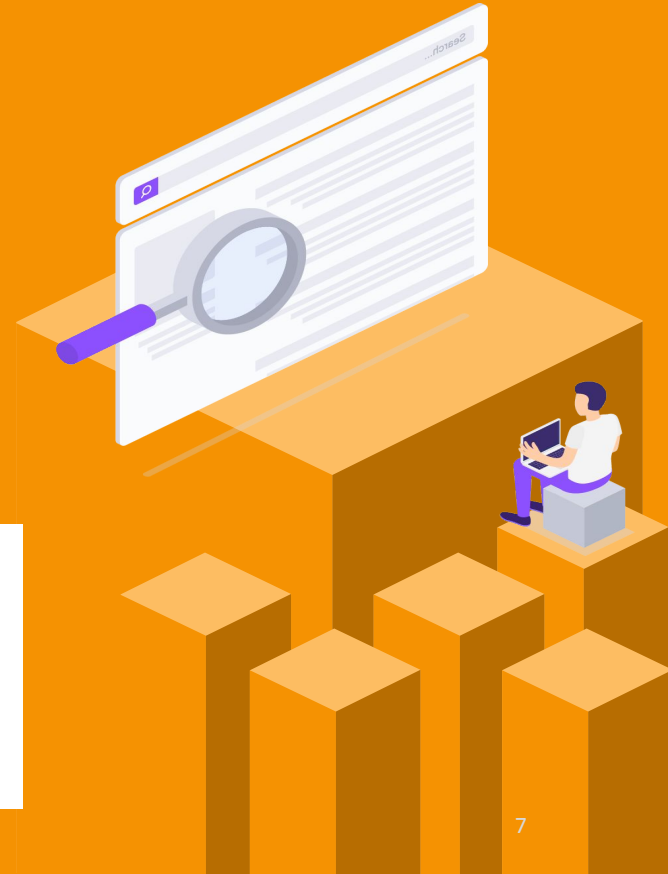
World Languages

- American Sign Language
- Mandarin Chinese
- Spanish for Heritage Learners



Options for reviewing materials

- We offer in-person and online review opportunities
- Your feedback is collected using an online form.
- All information and the form can be found at www.sanjuan.edu/curriculum



This year's review opportunities

- In-person, by appointment in room 18 of our PLI building at Choices Charter School. Email Loretta Naas for an appointment: loretta.naas@sanjuan.edu. Available through Dec. 19
- Online through Dec. 19: www.sanjuan.edu/curriculum
- Information on how to review is also provided at our schools (front office or attendance office) in the FACE mobile so that it is seen wherever the FACE mobile goes, as well as HR (Fingerprinting station) and Central Enrollment



Questions?





Thank You!