



Philomath School District 17J

Regular Board Meeting October 9, 2025

Date and Time

Thursday October 9, 2025 at 7:00 PM PDT

The Philomath School District Board of Directors will meet for a Regular Board Meeting on October 9, 2025 at 7 pm at the Philomath High School Community Conference Room located at 2054 Applegate Street.

Agenda

	Time
I. Opening Items	7:00 PM
A. Call the Meeting to Order	
B. Open Session	20 m
1. Pledge of Allegiance	
2. Election of Officers	
3. Approval of Consent Agenda	
4. Request for Agenda Modifications	
5. Public Comment: To indicate your desire to comment, please arrive before the meeting begins and complete a 'Request Card'. Please give the completed card to the Board Secretary prior to the start of the meeting. For virtual sharing, please contact michele.mcrae@philomath.k12.or.us by 3:00pm the day of the	

Time

meeting to schedule comment. Please include your name, address, phone number, and topic for public comment.

C. Swearing in of Student Representatives to the School Board 5 m

- Maggy Real
- Laney Thomas

II. REPORTS **7:25 PM**

A. Association Reports 5 m

- PEA
- OSEA

B. Student Government Report

C. School Staff: Review Clemens Community Pool 10 m

D. Superintendent's Report 10 m

E. Financial Report 5 m

F. Budget Committee Membership Update 5 m

III. DISCUSSION ITEMS **8:00 PM**

A. Work Session with King's Valley Charter School 5 m

B. OSBA Conference November 6-8 5 m

C. Property Line Deed 5 m

D. Inter-District Transfer Updates 5 m

IV. ACTION ITEMS **8:20 PM**

A. Oregon Department of Education Division 22 Standards 5 m

B. Integrated Guidance 24-25 Final Report 5 m

Time

V. Closing Items

8:30 PM

A. Next Meeting Agenda Items

3 m

B. Board Thanks

5 m

C. Board Requests

3 m

D. Adjourn Meeting

1 m

Coversheet

Open Session

Section: I. Opening Items
Item: B. Open Session
Purpose:
Submitted by:
Related Material: Consent Agenda.pdf
Regular Board Meeting Minutes September 11, 2025.pdf
Policy Committee Meeting Minutes 9-8-2025.pdf
Special Board Meeting Minutes September 22, 2025.pdf
Special Board Meeting Minutes September 29, 2025.pdf
Out of State Travel.pdf

Philomath School District 17J

CONSENT AGENDA

October 9, 2025

Updated: 10/7/25 10:00 AM

A. Minutes:

1. Regular Session Minutes – September 11, 2025
2. Policy Committee Meeting Minutes – September 8, 2025
3. Special Board Meeting Minutes – September 22, 2025
4. Special Board Meeting Minutes – September 29, 2025

B. Out of State Travel: Erica Hall to the Western International Band Clinic in Seattle, WA from November 21, 2025 to November 24, 2025. Students will include those who will be accepted after auditions.

C. Leave of Absence Request: None at this time.

D. Personnel/Staffing Adjustments:

1. **Retirements:** None at this time
2. **Resignations:**
 - i. Darci Garwood PHS Instructional Assistant
3. **New Hires:**
 - i. Derek Thompson PHS Temporary Instructional Assistant
4. **Staff Reassignments/Changes in FTE:** None at this time.
5. **Coaches:** None at this time
6. **Extra Duty Assignments:** None at this time

E. Second Reading Policies: None at this time.

REGULAR BOARD MEETING

Meeting Minutes

PHILOMATH SCHOOL DISTRICT 17J
Philomath High School Community Conference Room
2054 Applegate Street, Philomath
9/11/2025 07:00 PM

I. EXECUTIVE SESSION

- A. **Executive Session:** The Board met in executive session at 5:00 pm per ORS 192.660(2)(f) to consider information or records exempt by law from public inspection.

II. REGULAR SESSION

- A. **Call to Order:** The Regular Session of the Philomath School District Board of Directors was called to order by Board Chair Erin Gudge at 7:00 pm on September 11, 2025 at the Philomath High School Community Conference Room located at 2054 Applegate Street. Those in attendance included Philomath School District Board of Directors Erin Gudge, Tom Klipfel, Sandi Hering, Ryan Cheeke and Erin McMullen; Superintendent Susan Halliday; Business Manager Jennifer Griffith; Executive Assistant Michele McRae.
- B. **Open Session**
 - 1. **Pledge of Allegiance:** Director Hering led us in the Pledge of Allegiance.
 - 2. **Approval of Consent Agenda:** Director Hering moved to approve the Consent Agenda as presented. Director Cheeke seconded the motion, and the Board approved it unanimously. Motion passed 5-0.
 - 3. **Request for Agenda Modifications:** Superintendent Halliday asked for the Integrated Guidance presentation to be moved to the October meeting.
 - 4. **Public Comment:** Director Klipfel read the public comment statement and allotted a total of 15 minutes for public comments. Amanda Lindsey and Christie Vaughn read statements about a social media post.

III. REPORTS

- A. **Association Reports**
 - 1. **PEA:** Mallory Crane, PEA Co-President, reported that PEA is happy with the contract that was just bargained, and they're thankful to the District for working with them to complete this. They are looking forward to the Safety Series that is coming up, and looking forward to see how the District plans to address safety concerns.
 - 2. **OSEA:** No report tonight.
- B. **PHS Student Activities Report:** Maggy Real reported that the beginning of the school year has gone well. They have a Glow Dance coming up. Clubs are starting to pick back up, and the first football game of the season took place last week.

- C. **School Staff:** Kelsey Greydanus, the Philomath School District's Student Services Director, reported that safety can encompass structural and emergency response, and one area that they will focus on this year will be practices and policies in the District. There will be seven courses offered to staff that will cover challenging behaviors as part of the Safety Series that Kelsey will be coordinating.
- D. **Superintendent's Report**
 - 1. Superintendent Halliday reported on the current enrollment totals, however, it's still too early to tell if they're accurate. She also presented charts comparing current enrollment with enrollment totals from a year ago and from the end of the last school year.
 - 2. Superintendent Halliday summarized Inservice Week events, and she thanked the Board for hosting the all-staff BBQ which the staff appreciates. Honeybrine Catering catered an all-staff breakfast, and the Benton County Schools Credit Union sponsored the breakfast again.
 - 3. Superintendent Halliday updated the Board on recent inter-district transfer transactions, and the upcoming Back to School Open House.
 - 4. Emergency Services Tours took place on August 13th throughout the District.
 - 5. 2024-2025 At-A-Glance State Report Cards will be released in November.
- E. **Reopen Public Comment:** Director Cheeke made a motion to reopen public comment. Director Hering seconded the motion, and the Board approved it unanimously. Chris Martin commented on a recent social media post.
- F. **Integrated Guidance Annual Report:** This item will be presented at the October Regular Board Meeting.
- G. **Financial Report:** The financial reports were included in the Board packet, and Jennifer Griffith, the District's Business Manager expounded on some of the reports. There are still open Budget Committee positions.

IV. DISCUSSION ITEMS

- A. **Review Clemens Community Pool:** Superintendent Halliday said that they have found that there are issues with the filtering system for the pool. She is looking at what they need to do to fix the issues, possibilities for financing, ways to get all of the estimates for all of the needed work and timelines for repairs. This will be revisited in October with more information. Maggy Real asked about parking for students, and she asked the Superintendent if she is open to discussing parking for students. She said yes, that she would meet with the students.
- B. **Work Session Planning:** The Board decided that the hour before the Regular Meeting would be the best time to meet to conduct Board work unless there is an Executive Session needed before the meeting. The Board will meet from 6-7 pm on October 9th for a Board Work Session unless an Executive Session is needed.
- C. **Upcoming OSBA Elections:** Director Gudge encouraged anyone who is interested in running for OSBA open positions to apply with OSBA.

V. ACTION ITEMS

- A. **Student Representative to the School Board:** The high school is working through the process of choosing one or two new Student Representatives to the School Board.

- B. **Licensed Collective Bargaining Agreement (CBA):** Director Gudge reported that an agreement was reached between the District and PEA. PEA ratified the agreement during the in-service week. Director Hering moved to accept the collective agreement as presented. Director Cheek seconded the motion, and the Board approved it unanimously. Motion passes 5-0.

VI. MEETING CLOSURE

- A. **Next Meeting Agenda Items:** TAG Presentation, Division 22 Assurances, Integrated Guidance, Clemens Pool Update.
- B. **Board Thanks:** Director McMullen thanked everyone who worked on the Licensed Bargaining Agreement. She knows that it was a lot of work, and she appreciates everyone who gave their time and energy to work on it. Director Klipfel thanked everyone who worked on the back to school lunch. Director Cheeke thanked everyone who came back to work after summer break. Director Gudge thanked all staff, students, parents, and community members for a great start to the school year.
- C. **Board Requests:** Director Klipfel requested that emailed Board comments be forwarded to all of the Board members. He also requested consistency with summer watering.
- D. **Adjournment:** Board Chair Erin Gudge adjourned the meeting at 8:14 pm.

Board Chair

Superintendent

Date

POLICY COMMITTEE MEETING

Meeting Minutes

PHILOMATH SCHOOL DISTRICT 17J

District Office

1620 Applegate Street, Philomath, OR

9/8/2025

I. OPEN SESSION

- A. **Call to Order:** The Policy Committee Meeting was called to order at 2:20 pm on September 8, 2025 at the District Office located at 1620 Applegate Street. Those in attendance included Philomath School District Board of Directors Erin Gudge and Tom Klipfel, Superintendent Susan Halliday, and Executive Assistant Michele McRae.
- B. **Policies Reviewed**
 - 1. **BDDC:** Board Meeting Agenda: Added to 9/11/25 agenda for approval.
 - 2. **CEA:** Educational Equity Advisory Committee: Added to 9/11/25 agenda for approval.
 - 3. **DBEA:** Budget Committee: Added to 9/11/25 agenda for approval.
 - 4. **G CBD/GDBD:** Sick Leave – Personal Illness and Injury Leave: Added to 9/11/25 agenda for approval.
 - 5. **GCBDA/GDBDA:** Family and Medical Leave: Added to 9/11/25 agenda for approval.
 - 6. **GCBDA/GDBDA-AR(1):** Family and Medical Leave: Added to 9/11/25 agenda for approval.
 - 7. **GCBDD/GDBDD:** Sick Time: Added to 9/11/25 agenda for approval.
 - 8. **IGBAB/JO-AR:** Education Records/Records of Students with Disabilities Management: Added to 9/11/25 agenda for approval.
 - 9. **IIA:** Instructional Materials: Sent to Media Department for review.
 - 10. **JOA:** Directory Information: Removed for follow up questions to the appropriate department.
 - 11. **IKF:** Graduation Requirements: Added to 9/11/25 agenda for approval.
 - 12. **JFCEB:** Personal Electronic Devices: Added to 9/11/25 agenda for approval.
 - 13. **JFCEB-AR:** Request for Exception: Added to 9/11/25 agenda for approval.
 - 14. **JO/IGBAB-AR:** Education Records/Records of Students with Disabilities: Added to 9/11/25 agenda for approval.

C. **Adjournment:** The meeting ended at 3:58 pm.

Board Chair

Superintendent

Date

SPECIAL BOARD MEETING

Meeting Minutes

PHILOMATH SCHOOL DISTRICT 17J

9/22/2025 6:00 PM

- I. **EXECUTIVE SESSION:** The Board met in Executive Session at 5:00 pm per ORS 192.660(2)(f) to consider information or records exempt by law from public inspection.
- II. **REGULAR SESSION**
 - A. **Call to Order:** The Special Board Meeting of the Philomath School District Board of Directors was called to order by Board Vice Chair Tom Klipfel at 6:01 pm on September 22, 2025. The meeting was held virtually and it was live-streamed on the District's YouTube channel. Those in attendance included Philomath School District Board of Directors Erin Gudge, Tom Klipfel, Sandi Hering, Ryan Cheeke and Erin McMullen; Superintendent Susan Halliday and Executive Assistant Michele McRae.
 - B. **Complaint Form:** Director Klipfel announced that the form in Board Policy KL-AR(1) has been updated to list the four constituencies with check boxes, and City of Residence was added, so that the form aligns with policy KL. No other changes were made in KL-AR(1).
 - C. **Formal Complaints:** Director Klipfel said that it is up to the Board to determine how to handle complaints received towards Board Chair Erin Gudge. He opened the meeting up for Board discussion and potential motions.
 1. Director Hering moved to accept the complaints against Board Chair Erin Gudge. Director Cheeke seconded the motion. The Board approved the motion unanimously. Motion passes 5-0.
 2. Director Hering moved to delegate authority to Vice Chair Tom Klipfel to schedule a hearing and set the rules for the hearing process on the complaints filed, so the Board can make a determination on the complaints. Director Cheeke seconded the motion, and the Board approved it unanimously. Motion passes 5-0.
 3. Director Gudge said that she would like to have the hearing in open session to ensure transparency.

D. Adjournment: Board Vice Chair Tom Klipfel adjourned the meeting at 6:11 pm.

Board Chair

Superintendent

Date

SPECIAL BOARD MEETING

Meeting Minutes

PHILOMATH SCHOOL DISTRICT 17J

9/29/2025 6:00 PM

- I. **EXECUTIVE SESSION:** The Board met in Executive Session at 5:00 pm per ORS 192.660(2)(f) to consider information or records exempt by law from public inspection.
- II. **REGULAR SESSION**
 - A. **Call to Order:** The Special Board Meeting of the Philomath School District Board of Directors was called to order by Board Vice Chair Tom Klipfel at 6:00 pm on September 29, 2025. The meeting was held virtually and it was live-streamed on the District's YouTube channel. Those in attendance included Philomath School District Board of Directors Erin Gudge, Tom Klipfel, Sandi Hering, Ryan Cheeke and Erin McMullen; Superintendent Susan Halliday and Executive Assistant Michele McRae.
 - B. **New Complaints:** Director Klipfel announced that he received two new complaints against Board Chair Erin Gudge since their meeting one week ago, so the Board needs to decide how to address the two new complaints.
 1. Director Hering moved to accept the two additional complaints and that they be handled in the same hearing as the original complaints. Director Cheeke seconded the motion, and the Board approved it unanimously. Motion passes 5-0.
 2. Director Klipfel explained that there are two new complaints that are against the Board for allowing the complaints against Director Gudge. He opened the floor for discussion or motion on how to handle those. Director Hering moved to deal with the complaints against the Board in a similar manner but separately from the first eight complaints. Director Cheek seconded the motion, and the Board approved it unanimously. Motion passes 5-0.
 - C. **Board Hearing:** Director Klipfel said that the Board Hearing will take place on Tuesday, October 7, 2025 and that the location is to be determined. Director Klipfel will notify each complainant. He said that each complainant will have 10 minutes to speak.

D. Adjournment: Board Vice Chair Tom Klipfel adjourned the meeting at 6:06 pm.

Board Chair

Superintendent

Date



Philomath High School

'Home of the Warriors'

Athletic Team/Club Overnight Request and Supervision Plan

Team/Club: Band

Head Coach/Advisor: Hall

Destination: Double Tree Hotel Seattle, WA Event: Western International Band Clinic (WIBC)

Departure Date: Nov 21, 2025 Return Date: Nov 24, 2025

Transportation Mode (bus, car, etc.): unknown (will know when I know how many kids will attend)

Account charged: _____ (auditions are due 10/10/25)

Parent Permission

- a) Blanket permission family ID b) Specific forms _____ (attach form if applicable)

Supervision Requirements and Plan

General Requirements

- Supervisors must be Philomath School District a) employees or b) approved volunteer (over 21 years old).
- Co-ed activities require male and female supervisors (at least 1 must be a PSD employee).
- Annually all supervisors must complete supervision training and mandatory reporter training.
- Ratio of 1 supervisor to 10 students. Exceptions must be pre-approved by principal.
- At the end of all events, supervisors are to remain until all students are picked up.

Daytime Supervision

- Supervisors will review daily student behavior expectations and address any issues as they arise.
- Zones of supervision will be established based on the specific logistical and situational needs of the event(s).
- Supervisors will actively supervise, be proactive, and move strategically through the supervision zones.
- Reasonable supervision is expected at all times.
- Bus / vehicle supervision: No supervisor will transport student alone (1 on 1). In large vehicles (i.e. buses) there must be at least 1 adult in addition to the bus driver. Supervisors need to spread out throughout the bus, with the primary position in the back observing all students in front of them.

Nighttime Supervision

Same standards apply as daytime, additionally:

- In hotel rooms: a) male and female students sleep separately. b) Supervisors sleep separate from students unless adult is a parent of student(s) in the room. c) Blue tape placed on doors (from supervision training) d) Periodic room checks throughout night; male supervisors check male rooms / female supervisors check female rooms. d) Reasonable lights out times established
- Large space / sleepover style (rented house, gym): a) Supervisors DO sleep in large area, NOT in separate room. b) Supervise sleep at strategic locations- in between points and at exits. c) Separate males and females by space / rooms / or floors. d) Reasonable lights out times establish.

Supervision Requirements and Plan, Continued

Reporting

- Contact school administration in cases of health issues and violations of student conduct code (as discussed in training).
- Mandatory Reporters: As a supervisor of Philomath School District, you are a mandatory reporter. You must report any abuse or neglect concerns immediately to DHS, local law



'Home of the Warriors'

Athletic Team/Club Overnight Request and Supervision Plan

enforcement, and school administration. Do not wait to alert DHS or law enforcement, inform school administration as soon as you are able.

Important Contact Numbers

1. Benton County Sheriff: 541-766-6858
2. Philomath Police: 541-766-6925
3. Corvallis Police: 541-766-6925
4. DHS: 855-503-7233
5. Principal and/or Athletic Director (numbers provided to trip leaders)

Special Supervision Needs

In the space below (or attach) please add any additions to the supervision plan that are unique:

The WIBC staff provides supervision during the entire conference

**Refer to attached sheet provided by WIBC Staff*

By signing below I acknowledge that:

1. I am responsible for meeting the requirements of the supervision plan.
2. I am responsible for following PHS policies and procedures.
3. I am responsible for helping to enforce school and district policies.
4. I am responsible for the health and well-being of all students under my care.
5. I will provide reasonable / adequate supervision throughout the duration of the event.
6. I understand that failure to meet any of the criteria named above may lead to disciplinary action up to, and including, dismissal.

Staff / Coach

	<u>Print name</u>	<u>Sign name</u>
1.	<u>Erica Hall</u>	<u>Erica Hall</u>
2.	_____	_____
3.	_____	_____
4.	_____	_____

Philomath School District Approved and Trained Chaperone/Supervisor

1. The WIBC staff provides supervision during
2. the conference. NO additional chaperones
3. are needed
4. _____

**Refer to attached expansion from WIBC.*

APPROVED	DENIED	APPROVED	DENIED	APPROVED	DENIED
		<u>S. Hall</u>	<u>5-9-25-2025</u>		
PRINCIPAL		SUPERINTENDENT		PSD BOARD (Out of State ONLY)	

Coversheet

Financial Report

Section:	II. REPORTS
Item:	E. Financial Report
Purpose:	Discuss
Submitted by:	
Related Material:	Board report October 2025.pdf Appropriation 9.30.25.pdf PSD_Cash Flow 10.3.2025.pdf PES ASB student activities 10.1.25.pdf PMS ASB student activities 10.1.25.pdf PHS ASB student activities 10.1.25.pdf 100925 Enrollment.pdf



Philomath School District 17J

Benton County School District No. 17J, 1620 Applegate Street Philomath OR 97370 (541) 929-3169

October 9, 2025

Board Members:

The Budget Committee vacancies are still open for applicants. No applications have been received yet. Application packets are available on the district website for anyone interested in joining the Budget Committee. Because we did not receive any applications as of the previous due date, we propose extending the due date to October 31, 2025. Review of the applications and appointment of the new committee members will now take place at the regular November board meeting.

The auditors will be on site at the end of this month to perform field work for the 2024-25 audit.

As you can see from the enrollment report included in the Board packet, the district has seen an increase in enrollment from last year. This current enrollment total is about 30 students higher than what was originally submitted for the Estimate of Membership and Revenue with ODE last December. Because of the increase we have updated our numbers in the Estimate. ODE calculated a rebalance last week for the State School Fund grant. The table below has more details. While this is good news, we also know that we may see a negative adjustment in May for the 2024-25 SSF reconciliation due to receiving State Managed Timber funding late in 2024-25 of \$394,530. We will report on any other significant funding changes as the year progresses.

<u>SSF Est. date</u>	<u>Enrollment reported to ODE</u>	<u>ADMw used for calculation</u>	<u>SSF Grant</u>	<u>Change</u>
6/16/2025	1595	1924.19 (extended from 2024-25)	\$16,954,730	
9/29/2025	1630	1948.73 (using 2025-26 ADM)	\$17,222,476	\$267,746

Included in the board packet are the following financial reports:

- Appropriations
- Cash Flow estimate showing the cash flow trend for the year
- ASB Student Activities reports

September 2025 General Fund Expenditures totaled \$2,124,610. Expenditures that exceeded \$25,000 from all fund sources are as follows:

- Pacific Power \$ 29,723 (Monthly power bill)
- Oregon Educators Benefit Board \$ 206,440 (September Insurance premiums OEBB)
- PERS \$ 90,765 (August PERS payments)
- Kings Valley Charter School \$ 255,799 (September SSF payment to KVCS)

Respectfully Submitted,
Jennifer Griffith
Business Manager

10/2/2025

PHILOMATH SCHOOL DISTRICT, 17J

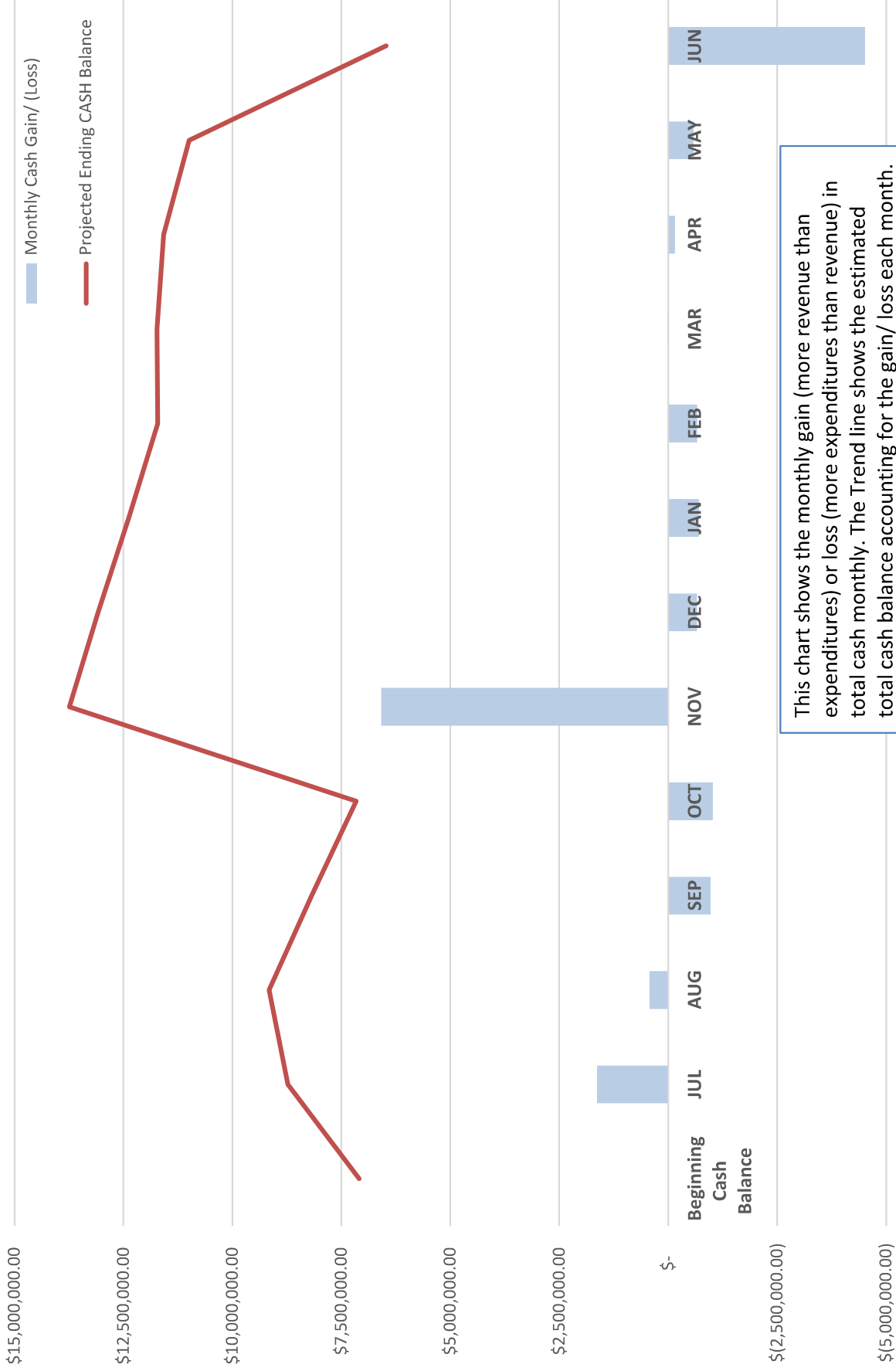
Appropriations, Budget vs. Actual

Fiscal Year 2025-2026

	Appropriations	YTD	Encumbrances	Totals	(Over)/Under Budget
General Fund (100)					
1000 Instruction	16,345,987	2,044,011	13,604,557	15,648,568	697,419
2000 Support Services	8,985,487	2,072,664	6,727,975	8,800,639	184,848
3000 Enterprise & Commun.	1,276	-	-	-	1,276
4000 Facilities	5,000	-	-	-	5,000
5200 Transfers	710,000	-	-	-	710,000
6000 Contingency	375,000	-	-	-	375,000
Sub Totals	26,422,750	4,116,675	20,332,532	24,449,207	1,973,543
Local/State/Federal Programs Funds					
1000 Instruction	2,442,233	289,991	1,279,174	1,569,165	873,068
2000 Support Services	1,677,204	115,203	328,165	443,368	1,233,836
3000 Community Services	1,148,967	134,384	421,221	555,605	593,362
4000 Facilities	80,000	-	-	-	80,000
5200 Transfers	-	-	-	-	-
Sub Totals	5,348,404	539,578	2,028,560	2,568,138	2,780,266
Assoc. Student Body (284, 285, 286)					
1000 Instruction	824,478	64,408	36,851	101,259	723,219
Debt Service Funds (300)					
5100 Debt Service	1,873,745	-	1,094,400	1,094,400	779,345
Capital Improvement Funds (400)					
2000 Support Services	480,000	158,750	198,654	357,404	122,596
4000 Facilities	471,852	-	-	-	471,852
5100 Debt Service	-	-	-	-	0
Sub Totals	951,852	158,750	198,654	357,404	594,448
Unemployment Fund (600)					
2000 Support Services	80,000	404	630	1,034	78,966
Reserve Funds (700)					
1000 Instruction	85,500	6,743	73,670	80,413	5,087
2000 Support Services	138,000	13,130	43,562	56,692	81,308
3000 Community Services	7,500	200	2,200	2,400	5,100
Sub Totals	231,000	20,073	119,432	139,505	91,495
Total Appropriations	35,732,229	4,899,888	23,811,059	28,710,947	7,021,282
Total Unappropriated	21,359,755	-	-	-	21,359,755
Total Adopted Budget	57,091,984	4,899,888	23,811,059	28,710,947	28,381,037

2025-2026 Philomath SD - Monthly Cash Gain/Loss

(Trend line Estimates Ending Cash Balance)



This chart shows the monthly gain (more revenue than expenditures) or loss (more expenditures than revenue) in total cash monthly. The Trend line shows the estimated total cash balance accounting for the gain/ loss each month.

Benton County School District 17J

Student Activities Summary Report

From: 7/1/2025 To: 6/30/2026

Fiscal Year: 2025-2026

Print Detail

Exclude Encumbrances

Reverse Signs

Page Break by Activity

Subtotal By Journal

	Range Beg. Balance	Range Revenue	Range Expenditures	Balance	Encumbrances	Available Balance
284,0000.9701.097.797.810 PSD Food Pack Program	2,354.12	1,000.00	.00	3,354.12	.00	3,354.12
284,0000.9701.097.797.812 PES Blodgett	3,555.91	.00	.00	3,555.91	.00	3,555.91
284,0000.9701.097.797.815 CPS Donations	109.49	3,000.00	(3,129.73)	(20.24)	.00	(20.24)
284,0000.9701.097.797.816 PES Grants	2,475.01	.00	.00	2,475.01	.00	2,475.01
284,0000.9701.097.797.825 PES Playground Donations Fund Balance	.00	250.00	.00	250.00	.00	250.00
284,0000.9701.097.797.826 PES Field Trips	.00	.00	.00	.00	.00	.00
284,0000.9701.097.797.827 PES Library	507.69	.00	.00	507.69	.00	507.69
284,0000.9701.097.797.828 PES Donations-Unrestricted	668.91	47.00	(194.50)	521.41	.00	521.41
284,0000.9701.097.797.830 PES Music	1,924.74	1,342.87	(1,072.87)	2,194.74	(1,342.87)	851.87
284,0000.9701.097.797.834 Falcon Swag Fund Balance	902.59	672.50	.00	1,575.09	(1,217.55)	357.54
284,0000.9701.097.797.842 PES Social Committee	957.75	25.81	(539.27)	444.29	.00	444.29
284,0000.9701.097.797.846 PES Yearbook	4,253.49	.00	.00	4,253.49	.00	4,253.49
284,0000.9701.097.797.847 PES Students in Need	26.42	.00	.00	26.42	.00	26.42
284,0000.9701.097.797.849 CPS Students in Need	20.20	.00	.00	20.20	.00	20.20
284,0000.9701.097.797.850 PES School Supplies	.00	.00	.00	.00	.00	.00
284,0000.9701.097.797.851 CPS Cub Swag Fund Balance	.00	.00	.00	.00	.00	.00
GRAND TOTALS	17,756.32	6,338.18	(4,936.37)	19,158.13	(2,560.42)	16,597.71

End of Report

Benton County School District 17J

Student Activities Summary Report

Fiscal Year: 2025-2026

From: 7/1/2025 To: 6/30/2026

Print Detail

Exclude Encumbrances

Reverse Signs

Page Break by Activity

Subtotal By Journal

	Range Beg. Balance	Range Revenue	Range Expenditures	Balance	Encumbrances	Available Balance
285.0000.9701.098.798.500 PMS Apparel	455.60	.00	.00	455.60	.00	455.60
285.0000.9701.098.798.501 PMS Art	1,713.65	240.00	.00	1,953.65	.00	1,953.65
285.0000.9701.098.798.502 PMS Athletics	3,532.78	165.00	.00	3,697.78	(579.93)	3,117.85
285.0000.9701.098.798.503 PMS Band	1,215.95	.00	.00	1,215.95	.00	1,215.95
285.0000.9701.098.798.504 PMS Band Repair/Replace	379.76	.00	(107.98)	271.78	.00	271.78
285.0000.9701.098.798.506 PMS Choir Beginning Balance	466.80	.00	.00	466.80	.00	466.80
285.0000.9701.098.798.507 PMS Donations	.00	.00	.00	.00	.00	.00
285.0000.9701.098.798.508 PMS Drama	17,977.15	.00	(1,769.00)	16,208.15	.00	16,208.15
285.0000.9701.098.798.510 PMS Library	129.47	.00	.00	129.47	.00	129.47
285.0000.9701.098.798.511 PMS Life Skills	612.11	.00	.00	612.11	.00	612.11
285.0000.9701.098.798.512 PMS Lock Replacement	1,710.17	.00	.00	1,710.17	.00	1,710.17
285.0000.9701.098.798.515 PMS Outdoor School	17,079.91	.00	.00	17,079.91	.00	17,079.91
285.0000.9701.098.798.516 PMS Sports/Pay-to-Play	25.00	.00	.00	25.00	.00	25.00
285.0000.9701.098.798.519 PMS School Enhancement	137.13	48.88	.00	186.01	.00	186.01
285.0000.9701.098.798.520 PMS Science	12.14	.00	.00	12.14	.00	12.14
285.0000.9701.098.798.521 PMS Shop	1,177.80	1,630.00	(1,500.00)	1,307.80	.00	1,307.80
285.0000.9701.098.798.522 PMS Struxness - Helping Families	1,528.99	.00	.00	1,528.99	.00	1,528.99
285.0000.9701.098.798.523 PMS Student Body Fees	476.80	7,110.00	(1,933.55)	5,653.25	(2,364.93)	3,288.32
285.0000.9701.098.798.524 PMS Suspension Account	755.19	.00	.00	755.19	.00	755.19
285.0000.9701.098.798.525 PMS Technology	877.35	.00	.00	877.35	.00	877.35
285.0000.9701.098.798.527 PMS Textbook Damage/Replacement	221.77	.00	.00	221.77	.00	221.77
285.0000.9701.098.798.529 PMS Student Wellness	585.90	.00	.00	585.90	.00	585.90

Benton County School District 17J

Student Activities Summary Report

Fiscal Year: 2025-2026

From: 7/1/2025 To: 6/30/2026

Print Detail

Page Break by Activity

Exclude Encumbrances

Reverse Signs

Subtotal By Journal

	Range Beg. Balance	Range Revenue	Range Expenditures	Range Balance	Encumbrances	Available Balance
285.0000.9701.098.798.530 PMS Oregon Research Institute	(12.23)	.00	.00	(12.23)	.00	(12.23)
285.0000.9701.098.798.531 PMS Trip Club	225.08	.00	.00	225.08	.00	225.08
285.0000.9701.098.798.532 PMS Health/PE	1,404.05	.00	.00	1,404.05	.00	1,404.05
285.0000.9701.098.798.533 PMS Elective Rotation fee	.00	.00	.00	.00	.00	.00
285.0000.9701.098.798.534 PMS Battle of the Books	555.76	300.00	.00	855.76	.00	855.76
285.0000.9701.098.798.535 PMS School Supplies	10.00	.00	.00	10.00	.00	10.00
285.0000.9701.098.798.536 PMS Turkey Bingo	.00	.00	.00	.00	.00	.00
285.0000.9701.098.798.537 PMS Fitness	(28.10)	.00	.00	(28.10)	.00	(28.10)
285.0000.9701.098.798.538 PMS Engineering	(55.66)	511.76	.00	456.10	.00	456.10
285.0000.9701.098.798.685 PMS Lost or Damaged Technology	.00	.00	.00	.00	.00	.00
GRAND TOTALS	53,170.32	10,005.64	(5,310.53)	57,865.43	(2,944.86)	54,920.57

End of Report

Benton County School District 17J

Student Activities Summary Report

Fiscal Year: 2025-2026

From: 7/1/2025 To: 6/30/2026

Print Detail

Page Break by Activity

Exclude Encumbrances Reverse Signs Subtotal By Journal

	Range Beg. Balance	Range Revenue	Range Expenditures	Balance	Encumbrances	Available Balance
286.0000.9701.099.799.000 Student Activities	(217.41)	.00	.00	(217.41)	.00	(217.41)
286.0000.9701.099.799.600 PHS Over/Short	149.09	.00	(149.09)	.00	.00	.00
286.0000.9701.099.799.604 PHS Art	1,589.69	979.86	(500.00)	2,069.55	.00	2,069.55
286.0000.9701.099.799.605 PHS Art Club Beginning Fund Balance	464.23	.00	(77.81)	386.42	.00	386.42
286.0000.9701.099.799.606 PHS ASB	3,999.41	50.00	(1,688.69)	2,360.72	(950.00)	1,410.72
286.0000.9701.099.799.607 PHS Athletic Officials	7,501.00	4,014.00	(23,212.62)	(11,697.62)	.00	(11,697.62)
286.0000.9701.099.799.611 PHS Athletics	18,456.06	2,340.83	(366.00)	20,430.89	.00	20,430.89
286.0000.9701.099.799.613 PHS Baseball	8,974.79	.00	.00	8,974.79	(2,895.00)	6,079.79
286.0000.9701.099.799.616 PHS Botany	2,798.50	.00	.00	2,798.50	.00	2,798.50
286.0000.9701.099.799.617 PHS Boys Basketball	12,665.52	.00	.00	12,665.52	.00	12,665.52
286.0000.9701.099.799.618 PHS Cheerleading	20,055.88	1,880.00	(4,291.00)	17,644.88	(7,477.82)	10,167.06
286.0000.9701.099.799.619 PHS Cinematic Art Club	435.44	.00	.00	435.44	.00	435.44
286.0000.9701.099.799.620 PHS Community Service Club-G. Lake	455.06	.00	.00	455.06	.00	455.06
286.0000.9701.099.799.621 PHS Cross Country	12,603.62	.00	(135.00)	12,468.62	(2,270.25)	10,198.37
286.0000.9701.099.799.622 PHS Dance Team	8,517.48	.00	(200.00)	8,317.48	.00	8,317.48
286.0000.9701.099.799.625 PHS Donation	1,693.01	.00	.00	1,693.01	.00	1,693.01
286.0000.9701.099.799.627 PHS Driver Education	3,500.00	5,525.00	(3,825.00)	5,200.00	.00	5,200.00
286.0000.9701.099.799.629 PHS Drama Club Beginning Fund Balance	4,332.12	.00	.00	4,332.12	.00	4,332.12
286.0000.9701.099.799.633 PHS Robotics Fund Balance	13,443.79	900.00	(1,893.21)	12,450.58	(1,620.65)	10,829.93
286.0000.9701.099.799.634 Robotics PHRED FLL Fund Balance	812.00	.00	(812.00)	.00	.00	.00
286.0000.9701.099.799.635 PHS Foods	3,310.80	395.00	(198.83)	3,506.97	.00	3,506.97

Benton County School District 17J

Student Activities Summary Report

Fiscal Year: 2025-2026

From: 7/1/2025 To: 6/30/2026

Print Detail

Exclude Encumbrances

Reverse Signs

Page Break by Activity

Subtotal By Journal

	Range Beg. Balance	Range Revenue	Range Expenditures	Balance	Encumbrances	Available Balance
286.0000.9701.099.799.636 PHS Football	15,098.86	5,350.00	(6,996.50)	13,452.36	(2,475.70)	10,976.66
286.0000.9701.099.799.637 PHS Forestry	7,754.12	1,000.00	(36.60)	8,717.52	.00	8,717.52
286.0000.9701.099.799.638 PHS GED	.00	.00	.00	.00	.00	.00
286.0000.9701.099.799.639 PHS German Class	726.19	.00	.00	726.19	.00	726.19
286.0000.9701.099.799.640 PHS Girls Basketball	21,814.77	.00	(500.00)	21,314.77	(6,100.00)	15,214.77
286.0000.9701.099.799.641 PHS Health Occ/Anatomy	1,085.92	160.00	.00	1,245.92	.00	1,245.92
286.0000.9701.099.799.642 PHS Green Team	289.83	.00	.00	289.83	.00	289.83
286.0000.9701.099.799.643 PHS Racial Equity/Culture Club	67.67	60.00	.00	127.67	.00	127.67
286.0000.9701.099.799.644 PHS Life Skills	5,468.18	.00	.00	5,468.18	.00	5,468.18
286.0000.9701.099.799.645 PHS Library	(105.01)	.00	149.09	44.08	.00	44.08
286.0000.9701.099.799.646 PHS Lifeguard	210.00	.00	.00	210.00	.00	210.00
286.0000.9701.099.799.647 PHS Link Crew	215.54	.00	.00	215.54	.00	215.54
286.0000.9701.099.799.649 PHS Manufacturing Technology	9,244.03	300.00	(189.81)	9,354.22	.00	9,354.22
286.0000.9701.099.799.652 PHS Misc Books	130.78	36.00	.00	166.78	.00	166.78
286.0000.9701.099.799.653 PHS Music Band	9,378.47	.00	.00	9,378.47	.00	9,378.47
286.0000.9701.099.799.654 PHS Music Choir	120.07	.00	.00	120.07	.00	120.07
286.0000.9701.099.799.655 PHS Music Tour	7,104.61	.00	.00	7,104.61	.00	7,104.61
286.0000.9701.099.799.656 PHS National Honor Society	2,481.37	150.00	.00	2,631.37	.00	2,631.37
286.0000.9701.099.799.657 PHS OWC Athletics Account	6,363.12	3,220.02	.00	9,583.14	(575.94)	9,007.20
286.0000.9701.099.799.658 PHS OWC Activities Account	3,537.50	1,000.00	(744.00)	3,793.50	.00	3,793.50
286.0000.9701.099.799.659 PHS Parking/Student Safety	1,825.00	1,995.00	(668.16)	3,151.84	.00	3,151.84

Benton County School District 17J

Student Activities Summary Report

Fiscal Year: 2025-2026

From: 7/1/2025 To: 6/30/2026

Print Detail

Exclude Encumbrances

Reverse Signs

Page Break by Activity

Subtotal By Journal

	Range Beg. Balance	Range Revenue	Range Expenditures	Balance	Encumbrances	Available Balance
286.0000.9701.099.799.660 PHS PE Fees	355.60	.00	.00	355.60	.00	355.60
286.0000.9701.099.799.661 PHS Peer Counseling	195.74	.00	.00	195.74	.00	195.74
286.0000.9701.099.799.664 PHS PHS Pay to Play	8,250.00	8,850.00	.00	17,100.00	.00	17,100.00
286.0000.9701.099.799.665 PHS Preschool	2,534.01	450.00	(206.24)	2,777.77	.00	2,777.77
286.0000.9701.099.799.666 PHS Prom	9,428.14	.00	.00	9,428.14	.00	9,428.14
286.0000.9701.099.799.668 PHS Golf fund Balance	4,236.48	.00	.00	4,236.48	.00	4,236.48
286.0000.9701.099.799.670 PHS Scholarship	700.77	.00	.00	700.77	.00	700.77
286.0000.9701.099.799.672 PHS Scholarship - Steve Moos-BES fundraiser	.00	.00	.00	.00	.00	.00
286.0000.9701.099.799.674 PHS School Enhancement	6,376.81	60.50	(1,832.36)	4,604.95	(3,324.20)	1,280.75
286.0000.9701.099.799.675 PHS School of Business	809.37	.00	(353.90)	455.47	.00	455.47
286.0000.9701.099.799.676 PHS Science	.00	.00	.00	.00	.00	.00
286.0000.9701.099.799.678 PHS Soccer Boys	3,843.60	3,241.00	.00	7,084.60	(163.76)	6,920.84
286.0000.9701.099.799.679 PHS Soccer Girls	866.91	6,534.45	(3,607.34)	3,794.02	(1,805.67)	1,988.35
286.0000.9701.099.799.680 PHS Softball	3,245.27	25.00	.00	3,270.27	.00	3,270.27
286.0000.9701.099.799.681 PHS Spanish Class	995.50	.00	(35.99)	959.51	.00	959.51
286.0000.9701.099.799.682 PHS Youth Transition Program	1,363.55	.00	.00	1,363.55	.00	1,363.55
286.0000.9701.099.799.684 PHS Student Body Fee	1,040.00	14,635.00	.00	15,675.00	.00	15,675.00
286.0000.9701.099.799.685 PHS Lost or Damaged Technology	680.00	200.00	(700.00)	180.00	.00	180.00
286.0000.9701.099.799.686 PHS Swim Team	3.78	.00	.00	3.78	.00	3.78
286.0000.9701.099.799.687 PHS Boys Tennis	5,376.11	.00	.00	5,376.11	.00	5,376.11
286.0000.9701.099.799.688 PHS Girls Tennis	4,577.82	.00	.00	4,577.82	.00	4,577.82
286.0000.9701.099.799.689 PHS Theatre	6,356.06	.00	.00	6,356.06	.00	6,356.06

Benton County School District 17J

Student Activities Summary Report

Fiscal Year: 2025-2026

From: 7/1/2025 To: 6/30/2026

Print Detail

Page Break by Activity

Exclude Encumbrances Reverse Signs Subtotal By Journal

	Range Beg. Balance	Range Revenue	Range Expenditures	Range Balance	Encumbrances	Available Balance
286.0000.9701.099.799.690 PHS Track	2,297.05	.00	.00	2,297.05	.00	2,297.05
286.0000.9701.099.799.692 PHS Boys Volleyball Fund Balance	.00	.00	.00	.00	.00	.00
286.0000.9701.099.799.693 PHS Girls Volleyball	13,014.22	566.20	(1,477.00)	12,103.42	(1,856.00)	10,247.42
286.0000.9701.099.799.695 PHS Warrior Wellness	2,625.11	.00	(45.00)	2,580.11	.00	2,580.11
286.0000.9701.099.799.696 PHS Wrestling	2,984.98	.00	.00	2,984.98	.00	2,984.98
286.0000.9701.099.799.697 PHS Yearbook	4,238.14	15,585.00	.00	19,823.14	.00	19,823.14
286.0000.9701.099.799.698 PHS Lagestee PTP Waiver Scholarship	8,914.82	.00	.00	8,914.82	.00	8,914.82
286.0000.9701.099.799.705 HS Student Transcript Fees	76.76	111.52	(153.67)	34.61	.00	34.61
GRAND TOTALS	313,737.70	79,614.38	(54,746.73)	338,605.35	(31,514.99)	307,090.36

End of Report

**2025 / 2026 SCHOOL YEAR
ENROLLMENT FIGURES as of: October 3, 2025**

District	CPS	PES	BL	PMS	PHS	Academy	Part Time	KVCS	Part Time
Kindergarten	97	81	6			0	0	10	
1st	93	<u>76</u>	5			0	0	12	
2nd	117	91	5			0	0	21	
3rd	117	91	6			0	1	19	
4th	119	99	<u>3</u>			0	0	17	
5th	129	<u>109</u>				0	0	20	
6th	116			97		0	0	19	
7th	142			118		0	1	23	
8th	143			<u>125</u>		4	0	14	
9th	140				117	6	0	17	
10th	135				109	16	0	10	
11th	127				101	13	0	13	
12th	156				<u>125</u>	<u>22</u>	<u>0</u>	9	
Totals		<u>157</u>	<u>390</u>	<u>25</u>	<u>340</u>	<u>452</u>	<u>61</u>	<u>2</u>	<u>204</u>

TOTAL FULL-TIME ENROLLMENT - All Schools 1,629

Philomath School District 17J - 2025-2026 School Year - Summary of Enrollment

School	09/11	10/09	11/13	12/11	01/08	02/12	03/12	04/09	05/14	06/11
CPS	157	157								
PES	398	390								
BL	26	25								
PMS	347	340								
PHS	462	452								
Academy	55	61								
KVCS	201	204								
SubTotal	1,646	1,629	0	0	0	0	0	0	0	0
Part-time students	0	2		0	0					
Total Enrollment	1,646	1,631	0	0	0	0	0	0	0	0

Philomath School District 17J - 2024-2025 School Year -- Summary of Enrollment

School	09/12	10/10	11/14	12/09	01/09	02/13	03/13	04/10	05/08	06/12
CPS	169	160	158	158	152	162	161	159	160	158
PES	365	365	367	362	369	369	370	370	370	370
BL	32	32	32	32	31	29	29	30	30	28
PMS	351	349	349	347	353	347	345	341	338	335
PHS	452	445	442	443	442	437	433	437	436	434
Academy	78	72	78	77	77	81	86	86	88	90
KVCS	193	194	195	194	190	194	196	195	194	191
SubTotal	1,640	1,617	1,621	1,613	1,614	1,619	1,620	1,618	1,616	1,606
Part-time students	0	10	9	9	9	7	7	7	7	6
Total Enrollment	1,640	1,627	1,630	1,622	1,623	1,626	1,627	1,625	1,623	1,612

Coversheet

Inter-District Transfer Updates

Section: III. DISCUSSION ITEMS
Item: D. Inter-District Transfer Updates
Purpose:
Submitted by:
Related Material: Inter-District Transfer Update.pdf



Philomath School District 17J

Benton County School District No. 17J, 1620 Applegate Street Philomath OR 97370 (541) 929-3169

Graduate EVERY student and transition each into a job, training, or college.

Philomath School District 17J
Board of Directors
 Interdistrict Transfer Activity Report
 October 9, 2025
 UPDATED

School	Approved Since 09/11/2025	Available Slots for Approval
Blodgett Elementary	-0-	2 slots for K-2 Classroom 2 slots each for 3 rd and 4 th
Clemens Primary	-0-	7 slots for Kindergarten 12 slots for 1 st Grade
Philomath Academy	-0-	2 slots each for 6 th and 7 th 7 slots for 8 th Grade 3 slots for 9 th Grade 4 slots for 10 th Grade 5 slots for 11 th Grade 2 slots for 12 th Grade
Philomath Elementary	-0-	All Grades Closed
Philomath High	1 (12 th Grade)	9 th and 10 th Grade Closed 3 Slots for 11 th Grade 3 slots for 12 th Grade
Philomath Middle	-0-	7 th and 8 th Grade Closed 5 slots for 6 th Grade

Coversheet

Oregon Department of Education Division 22 Standards

Section: IV. ACTION ITEMS
Item: A. Oregon Department of Education Division 22 Standards
Purpose:
Submitted by:
Related Material: Division 22.pdf

Philomath School District 17J Report on Compliance with Public School Standards 2024-25 School Year

By November 1 of each year, school district superintendents are required by [OAR 581-022-2305: District Assurances of Compliance with Public School Standards](#) to report to their community on the district's status with respect to all of the Standards for Public Elementary and Secondary Schools. The Standards are adopted by the State Board of Education and set out in Oregon Administrative Rules Chapter 581, Division 22.

The table below contains a summary of **Philomath** School District's compliance with each of the requirements of Oregon's administrative rules found in [DIVISION 22 - STANDARDS FOR PUBLIC ELEMENTARY AND SECONDARY SCHOOLS](#) during the 2024-25 school year. For each rule reported as out of compliance, **Philomath** School District has provided an explanation of why the school district was out of compliance and the school district's proposed corrective action plan to come into compliance. The corrective action must be approved by ODE and completed by the district by the beginning of the 2026-27 school year.

What are the requirements of the standards? For a general overview of what each rule/standard requires, consult this high-level [Rules at a Glance summary](#). For specific, comprehensive requirements, use the links below for each individual rule.

Category: High-Quality Learning Experiences for All Students

Rule # and Title	Status	Explanation/Evidence	Corrective Action Plan & Timeline
581-022-2000 Diploma Requirements	In compliance	The district has met all of the requirements for this rule.	Not applicable
581-022-2010 Modified Diploma	In compliance	The district has met all of the requirements for this rule.	Not applicable
581-022-2015 Extended Diploma	In compliance	The district has met all of the requirements for this rule.	Not applicable
581-022-2020 Certificate of Attendance	In compliance	The district has met all of the requirements for this rule.	Not applicable
581-022-2050 Human	In compliance		

Sexuality Education		The district has met all of the requirements for this rule.	Not applicable
581-022-2055 Career Education	In compliance	The district has met all of the requirements for this rule.	Not applicable
581-022-2263 Physical Education Requirements *Elementary Grades	In compliance	The district has met all of the requirements for this rule.	Not applicable
581-022-2263 Physical Education Requirements *Middle Grades	In compliance	The district has met all of the requirements for this rule.	Not applicable
581-022-2340 Media Programs	In compliance	The district has met all of the requirements for this rule.	Not applicable
581-022-2350 Independent Adoptions of Instructional Materials	In compliance	The district has met all of the requirements for this rule.	Not applicable
581-022-2355 Instructional Materials Adoption	In compliance	The district has met all of the requirements for this rule.	Not applicable
581-022-2360 Postponement of Purchase of State-Adopted Instructional Materials	Out of compliance	Currently evaluating all instructional materials adoptions to formally note any postponements to ODE.	Evaluating all adoptions to determine any postponements and reporting to ODE by June 30, 2026.
581-022-2440 Teacher Training Related to Dyslexia	In compliance	The district has met all of the requirements for this rule.	Not applicable
581-022-2500 Programs and Services for TAG Students	In compliance	The district has met all of the requirements for this rule.	Not applicable
581-022-2505 Alternative Education Programs	In compliance	The district has met all of the requirements for this rule.	Not applicable

CategoryAdmin: Aligned and Focused Educational Systems

Rule # and Title	Status	Explanation/Evidence	Corrective Action Plan & Timeline
581-022-2025 Credit Options	In compliance	The district has met all of the requirements for this rule.	Not applicable
581-022-2030 District Curriculum	In compliance	The district has met all of the requirements for this rule.	Not applicable
581-022-2060 Comprehensive School Counseling	In compliance	The district has met all of the requirements for this rule.	Not applicable
581-022-2100 Administration of State Assessments	In compliance	The district has met all of the requirements for this rule.	Not applicable
581-022-2110 Exception of Students with Disabilities from State Assessments	In compliance	The district has met all of the requirements for this rule.	Not applicable
581-022-2115 Assessment of Essential Skills: Diploma Requirements	Waived through the end of 2027-28 school year	Not applicable	Not applicable
581-022-2115(2) Assessment of Essential Skills: Local Performance Assessment Requirement	In compliance	The district has met all of the requirements for this rule.	Not applicable
581-022-2120 Essential Skill Assessments for English Language Learners	Waived through the end of 2027-28 school year	Not applicable	Not applicable
581-022-2250 District	In compliance	The district has met all of the	Not applicable

<u>Improvement Plan</u>		requirements for this rule.	
<u>581-022-2260 Records and Reports</u>	In compliance	The district has met all of the requirements for this rule.	Not applicable
<u>581-022-2265 Report on PE Data</u>	In compliance	The district has met all of the requirements for this rule.	Not applicable
<u>581-022-2300 Standardization</u>	In compliance	The district has met all of the requirements for this rule.	Not applicable
<u>581-022-2305 District Assurances of Compliance with Public School Standards</u>	In compliance	The district has met all of the requirements for this rule.	Not applicable
<u>581-022-2315 Special Education for Children with Disabilities</u>	In compliance	The district has met all of the requirements for this rule.	Not applicable
<u>581-022-2320 Required Instructional Time</u>	In compliance	The district has met all of the requirements for this rule.	Not applicable
<u>581-022-2325 Identification of Academically Talented and Intellectually Gifted Students</u>	In compliance	The district has met all of the requirements for this rule.	Not applicable
<u>581-022-2335 Daily Class Size</u>	In compliance	The district has met all of the requirements for this rule.	Not applicable
<u>581-022-2400 Personnel</u>	In compliance	The district has met all of the requirements for this rule.	Not applicable
<u>581-022-2445 Universal Screenings for Risk Factors of Dyslexia</u>	In compliance	The district has met all of the requirements for this rule.	Not applicable

Category: Engaged Partners and Communities

Rule # and Title	Status	Explanation/Evidence	Corrective Action Plan & Timeline
581-022-2005 Veterans Diploma	In compliance	The district has met all of the requirements for this rule.	Not applicable
581-022-2255 School and District Performance Report Criteria	In compliance	The district has met all of the requirements for this rule.	Not applicable
581-022-2270 Individual Student Assessment, Recordkeeping and Reporting	In compliance	The district has met all of the requirements for this rule.	Not applicable
581-022-2330 Rights of Parents of TAG Students	In compliance	The district has met all of the requirements for this rule.	Not applicable
581-022-2370 Complaint Procedures	In compliance	The district has met all of the requirements for this rule.	Not applicable

Category: Safe & Inclusive Schools

Rule # and Title	Status	Explanation/Evidence	Corrective Action Plan & Timeline
581-022-2045 Substance Use Prevention and Intervention Plan	In compliance	The district has met all of the requirements for this rule.	Not applicable
581-022-2205 Policies on Reporting of Child Abuse	In compliance	The district has met all of the requirements for this rule.	Not applicable
581-022-2210 Anabolic	In compliance	The district has met all of the requirements for this rule.	Not applicable

<u>Steroids and Performance Enhancing Substances</u>		requirements for this rule.	
581-022-2215 Safety of School Sports – Concussions	In compliance	The district has met all of the requirements for this rule.	Not applicable
581-022-2220 Health Services	In compliance	The district has met all of the requirements for this rule.	Not applicable
581-022-2223 Healthy and Safe Schools Plan	In compliance	The district has met all of the requirements for this rule.	Not applicable
581-022-2225 Emergency Plans and Safety Programs	In compliance	The district has met all of the requirements for this rule.	Not applicable
581-022-2230 Asbestos Management Plans	In compliance	The district has met all of the requirements for this rule.	Not applicable
581-022-2267 Annual Report on Restraint and Seclusion	In compliance	The district has met all of the requirements for this rule.	Not applicable
581-022-2308 Agreements Entered Into with Voluntary Organizations	In compliance	The district has met all of the requirements for this rule.	Not applicable
581-022-2310 Equal Education Opportunities	In compliance	The district has met all of the requirements for this rule.	Not applicable
581-022-2312 Every Student Belongs	In compliance	The district has met all of the requirements for this rule.	Not applicable
581-022-2345 Auxiliary Services	In compliance	The district has met all of the requirements for this rule.	Not applicable
581-022-2430 Fingerprinting of Subject Individuals in	In compliance	The district has met all of the requirements for this rule.	Not applicable

<u>Positions Not Requiring Licensure as Teachers, Administrators, Personnel Specialists, School Nurses</u>			
<u>581-022-2510 Suicide Prevention Plan</u>	In compliance	The district has met all of the requirements for this rule.	Not applicable
<u>581-022-2515 Menstrual Dignity for Students</u>	In compliance	The district has met all of the requirements for this rule.	Not applicable

Category: Committed and Supportive Staff

Rule # and Title	Status	Explanation/Evidence	Corrective Action Plan & Timeline
<u>581-022-2405 Personnel Policies</u>	In compliance	The district has met all of the requirements for this rule.	Not applicable
<u>581-022-2410 Teacher and Administrator Evaluation and Support</u>	In compliance	The district has met all of the requirements for this rule.	Not applicable
<u>581-022-2415 Core Teaching Standards</u>	In compliance	The district has met all of the requirements for this rule.	Not applicable
<u>581-022-2420 Educational Leadership - Administrator Standards</u>	In compliance	Adopting ten standards of Professional Standards for Educational Leadership in 2025-2026, meeting compliance requirement well ahead of the 2027-2028 school year. (Currently using six standards model).	Not applicable

Coversheet

Integrated Guidance 24-25 Final Report

Section: IV. ACTION ITEMS
Item: B. Integrated Guidance 24-25 Final Report
Purpose:
Submitted by:
Related Material: Integrated Guidance Report.pdf

Philomath School District 17J

Aligning for Student Success:

Integrated Guidance
Annual Report Narrative
2024-2025



Philomath School District

1620 Applegate Street
Philomath, Oregon 97370
541-929-3169
541-929-3991 (Fax)

<https://www.philomathsd.net/>

General Information

School Year: 2024-2025

School District Name: Philomath School District 17J

Institution ID: 1900

Webpage: <https://www.philomathsd.net/>

Contacts: Susan Halliday, Superintendent

E-Mail: susan.halliday@philomath.k12.or.us

Phone Number: 541-929-3169

Jeff Brew, LBL SIA/ IG Liaison

E-Mail: jeff.brew@lblead.k12.or.us

Phone Number: 541-812-2600

Jennifer Griffith, Business Manager

E-Mail: jennifer.griffith@philomath.k12.or.us

Phone Number: 541-929-3169

Philomath School District General Information

Philomath School District

Susan Halliday	Superintendent
Jennifer Griffith	Business Manager
Kelsey Greydanus	Student Services Director
Mark Neville	Technology Director
Nicole Byerley	Nutrition Services Director
Joey DiGiovannangelo	Facilities Director
Rachel Baker	Library/ Media
Eugenia Moone	Clemens Pool Director

Blodgett Elementary School

Eric Beasley	Principal
--------------	-----------

Clemens Primary School

Abby Couture	Principal
--------------	-----------

Philomath Academy

Garth Gerot	Principal
-------------	-----------

Philomath Elementary School

Eric Beasley	Principal
Mike McDonough	Assistant Principal

Philomath High School

Mark Henderson	Principal
DeeDee Collins	Assistant Principal
Mike Hood	Assistant Principal/ Athletic Director

Philomath Middle School

Steve Bell	Principal
Jamon Ellingson	Assistant Principal/ Athletic Director

Kings Valley Charter School

Diana Barnhart	Facilities and District Relations
Scott Castle	Middle/ High Head Teacher
Michael Chung	Middle/ High Head Teacher
Wren Huff	Business Manager
Athena Lodge	Elementary Head Teacher

Philomath School Board

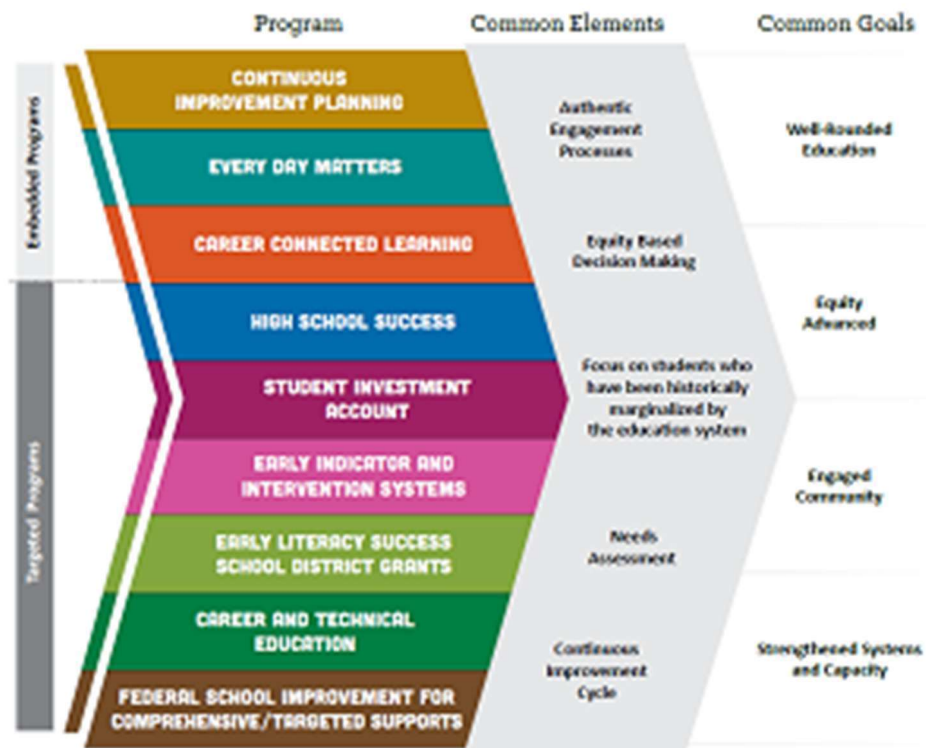
Ryan Cheeke
Erin Gudge
Sandi Hering
Tom Klipfel
Erin McMullen

Kings Valley Charter School Board

John Corbin
Beth Hoinacki
Sally Lammers
Linda North

Aligning for Student Success: Integrated Guidance

The Integrated Guidance Plan is a comprehensive application that aligns and integrates separately created funding investments focused on educational improvement and innovation.



Oregon Department of Education, Spring 2023.

Four of the programs connect to once-independent funding streams. These programs are highlighted in yellow in the chart below. The remaining two initiatives are embedded in goals that match common elements with the funded programs.

Funds are not new to the Philomath School District. In prior years, each component has been requested in independent applications. This plan combines all into a single application.

Program Title	Goals
Continuous Improvement Plan (CIP)	<ul style="list-style-type: none"> Improve experiences and outcomes for all students. Foster engagement in collaboration, data analysis, professional learning, and reflection. Leverage multiple perspectives and equity-centered data analysis to identify strengths and areas of improvement

Program Title	Goals
Every Day Matters (EDM)	<ul style="list-style-type: none"> Addressing chronic absenteeism through attention to student engagement, school culture, climate and safety, culturally sustaining pedagogy, and family and community involvement.
Career Connected Learning	<ul style="list-style-type: none"> A framework of career awareness, exploration, preparation, and training that is both learner-relevant and directly inked to professional and industry-based expectations.
High School Success Act (HSS)	<ul style="list-style-type: none"> Improve student progress toward graduation. Increase high school graduation rates. Increase equitable access to advanced coursework. Improve HS graduates’ readiness for college and career. (“job, training, or college”)
Student Investment Account (SIA) within the Student Success Act (SSA)	<ul style="list-style-type: none"> Meet students’ mental or behavioral health needs. Reduce academic disparities and increase academic achievement for traditionally underserved students.
Early Indicator Intervention Systems (EIS)	<ul style="list-style-type: none"> Gather, review, and analyze predictive data at the student level. Identify strengths, assets, and areas to support individual students.
Early Literacy Success School District Grants	<ul style="list-style-type: none"> Increase early literacy for children from birth to third grade. Reduce literacy academic disparities for student groups that have historically experienced academic disparities. Increase support to parents/ guardians to enable them to be partners in the development of their children’s literacy skills and knowledge. Increase access to early literacy learning through support that is research-aligned, culturally responsive, student-centered, and family-centered.
<p>Career & Technical Education (CTE) (Perkins V)</p> <p>Funded through LBCC Regional Consortium</p>	<ul style="list-style-type: none"> Develop the academic knowledge and technical and employability skills of secondary education students. Increase equitable access and inclusion in high-quality CTE and career-connected learning activities.

Annual Review Narrative

- 1) As you review your progress markers/ overall reflection responses and reflect on plan implementation, how do you see your progress contributing to the Outcomes and Strategies in your plan and your Longitudinal Performance Growth Targets (LPGT)/ Local Optional Metrics (LOM)? Discuss at least one Outcome where you have seen progress in implementation.

As we evaluate progress on our efforts with our Integrated Guidance Plan, we believe we have made strides forward in the interest of student success. While there is always room for improvement, success points can be noted in the following areas.

High School Success Supported Through Professional Learning Communities:

Philomath High School has embraced the work of Professional Learning Communities, receiving training in and embracing implementation through the Solution Tree program of Professional Learning Communities at Work. Teachers work primarily through grade-level teams to review data and educator practice to support student learning and growth. For Philomath High School, this has manifested to a 94.4% rate of freshman on track in the 2024-2025 school year. Each student is 'known' by at least one caring staff member to encourage individual student engagement and participation. Other measures celebrating the work of Philomath High School includes a >95% four-year cohort graduation rate and a >95% five-year cohort completion rate.

The Philomath Academy also has reason to celebrate. While the four-year cohort graduation rate for the Philomath Academy is currently at 57.14 %, the five-year completion rate is just below 90%. A big reason for this includes those students completing a GED instead of a full high school diploma. In an unadjusted cohort of 28 students, fifteen received a standard diploma and eight earned a GED. In such instances when appropriate, the GED allows some students a clear path forward allowing them to return to earn a standard diploma or to move into a community college setting for additional education and training. This trajectory is celebrated for these students as an open-door path forward.

Literacy Gains:

Significant progress has been made in literacy development across grades K–8. At the K–5 level, students have shown literacy gains supported by strong RTIi programming and targeted Science of Reading instruction provided in partnership with LBL. Robust RTIi systems are in place through grade 8, incorporating both push-in and pull-out instructional models to address individual student strengths and needs. At the early learning level (K–1), the addition of an SLPA has provided focused language support for students whose needs impact literacy development but do not require special education services, ensuring early and effective intervention. Professional Learning Communities (PLCs) have also been established to reinforce success for

all students, with teaching staff meeting weekly or bi-weekly to review data, share strategies, and strengthen instructional practices that directly support student achievement.

Professional Learning for All Staff:

Staff in the Philomath School District are provided an early-release day, without student contact, each Friday afternoon during the school year. Most specifically in the past two years, this time has been well-utilized by staff to grow and learn together. With a focus on student learning and educator collective efficacy, we believe that teachers are much more empowered and equipped to give their best to and for students.

Another positive has come from addressing focused professional learning for our classified staff members. With the increased responsibilities of our classified staff members—especially our instructional assistants—such focus on quality professional learning has been a great success.

2) Where have you experienced barriers, challenges, or impediments to progress toward your Outcomes and Strategies in your plan that you could use support with? Discuss at least one Outcome where you have seen challenges or barriers to implementation.

Student Attendance:

One of the most pressing barriers continues to be chronic absenteeism, which directly impacts student learning and growth. Helping students and families understand the importance of being in school every day remains critical, and we must continue to tell this story in ways that resonate across our community. Consistency of implementation across schools is another challenge, as expectations and practices could be more tightly aligned to ensure equitable support for all students. Additionally, the change in local benchmark and progress monitoring assessment tools at the end of the school year created transition hurdles, requiring staff and students to adjust quickly to new systems while maintaining focus on instructional priorities.

While we have increased communication with families about student attendance, our lack of bandwidth to provide home visits, when needed, takes away what we believe to be a positive element of support. We also know that fining families, as the law allows, is not the most productive way to encourage attendance and engage students in learning. With potential for reduced budgets in upcoming years, the burden does not get lighter.

Literacy Gains at 3rd Grade Through RTI Supports:

Reviewing 3rd grade reading data highlights a decline in the percentage of students meeting the state standard on the OSAT, with a target of 53.6% compared to an actual performance of 45%. This gap underscores the need to more closely analyze the results alongside benchmark assessment information to identify strategies that will support stronger gains. Elementary students engaged with iReady for benchmark assessments in the fall and winter, but the spring return to STAR testing created complications, as it occurred simultaneously with OSAT

administration. Additionally, the decreasing percentages of students participating in the OSAT further skew overall data, making it more difficult to obtain a fully accurate picture of student performance. We will continue our diligence in RTI practices, reading interventions, professional learning, and creating a well-rounded and engaging education for all students.

A few items on which we will be focusing include the following:

- **Districtwide MTSS (Multi-Tiered System of Support) Protocols:**
School team of administrators, teachers, and parents beginning work on alignment of consistent system of supports, including data sets to be considered.
- **Ongoing Literacy Gain:**
Seeking to determine reasons for drop in student literacy performance in the 2024-2025 school year. Looking to strategies that will support success, including focused PLC cycles completed by staff and focus on whole-group ECRI administration at Clemens Primary School.
- **Caring Adults to Encourage Students Attendance:**
My office door bears a sign stating, "Every kid is one caring adult away from being a success story." (Josh Shipp) When each student has at least one caring adult responsible for engaging and inviting them into learning, the importance of school and self can change for that student.
- **Celebration of Positive Attendance Gains:**
When the momentum moves in the direction we want, we must not forget to celebrate both the students and the win.

Longitudinal Performance Growth Targets 2024-2025

Metric	Target Type	2024-2025 Target	2024-2025 Actual
Four-Year Cohort Graduation	All Students	79%	87.31% >95.00% (PHS) 57.14% (PA) 50.00% (KVCS)
	Stretch Target	84%	
Five-Year Cohort Completion	All Students	>95%	95.90% >95.00% (PHS) 89.29% (PA) 85.71% (KVCS)
	Stretch Target	>95%	
9 th Grade On-Track	All Students	86.8%	91.5% >95.00% (PHS) 77.80% (PA) >95.00% (KVCS)
	Stretch Target	89%	
3 rd Grade ELA Proficiency	All Students	53.6%	45.00% (All) 75.00% (BES) 28.60% (KVCS) 46.70% (PES) 95.80% Participation
	Stretch Target	57%	
8 th Grade Math Proficiency	All Students	TBD	31.50% 26.70% (KVCS) * (PA) 33.00% (PMS) 82.20% Participation
	Stretch Target	TBD	
Regular Attenders	All Students	65%	67.40%
	Stretch Target	67%	