

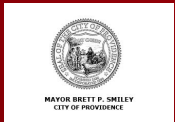
Providence School Building Committee

Capital School Construction Briefing

Agenda

- **RIDE Stage II Overview**
 - RIDE SBA Presentation
 - Studio JAED Planned Submission for Providence School District Stage II
- **Construction updates**
 - Phase 2 projects
 - Phase 3 projects
- **Action Items**

August 26, 2025



Providence
Schools



RIDE Stage II

September 15, 2025

Projects

Kizirian ES Gymnasium Renovation & Site Work

Districtwide 5 Year Capital Improvement Plan



Providence
Schools



Objective of the 2025 RIDE Stage II

- Stage II application is for housing aid reimbursement for future construction projects, with a primary focus on the Capital Revolving Fund
- Once approved, it will result in a Memorandum of Agreement (MOA) with RIDE that the City will use to seek reimbursement
 - Please note that the MOA amounts and actual funding levels are distinct – funding will be determined on an annual basis by the City and PPSD
 - The SBC may make adjustments to the MOA in the coming years as project needs adjust
 - Key components of this Stage II request include
 - Capital Revolving Fund
 - Program additions at Kizirian Pk-8 (existing Gym Renovation, Connector & Site Work
 - Times2 Academy funded projects (no CRF, City or PPSD funding)

Order of Magnitude Costs

Kizirian ES Gymnasium Renovation & Site Work	\$20M
Districtwide 5 Year Capital Improvement Plan	\$50M
Times2 Academy	\$10M
Total \$80M	

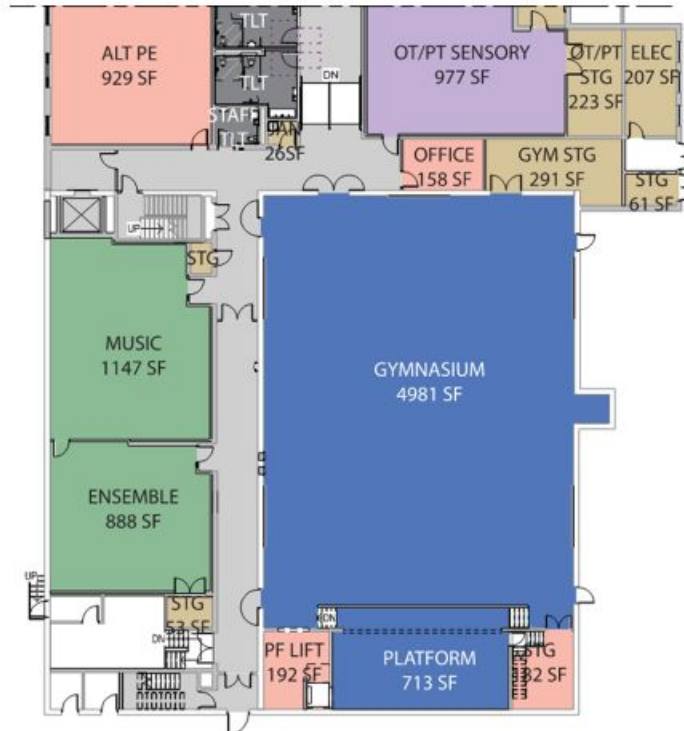
RIDE Stage II

September 15, 2025

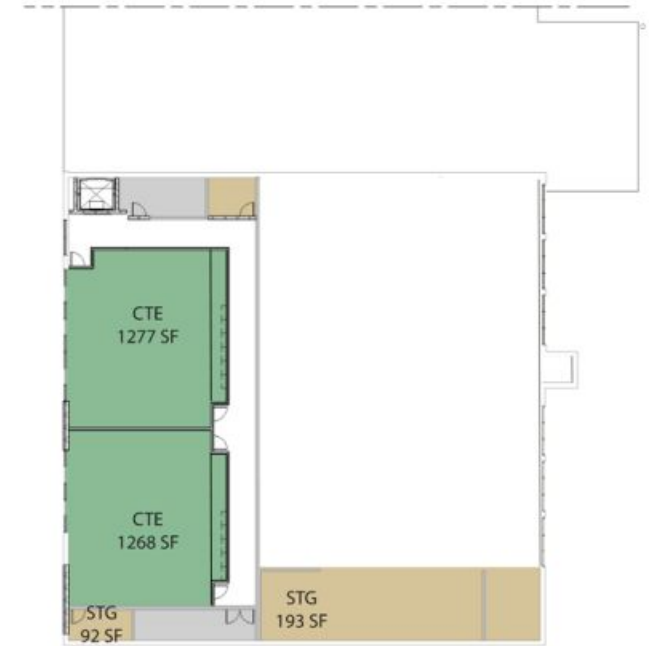
Kizirian ES Gymnasium Renovation & Site Work



Existing to be Renovated



First Floor



Second Floor

Districtwide 5 Year Capital Improvement Plan

Total District Need is approx. \$350M

Elementary Schools	\$175M
--------------------	--------

Middle Schools	\$80M
----------------	-------

High Schools	\$95M
--------------	-------

Districtwide 5 Year Capital Improvement Plan

Proposed Scope of Work is Approx. \$10M / year (Five Years)

Elementary Schools	\$25M
--------------------	-------

Middle Schools	\$5M
----------------	------

High Schools	\$20M
--------------	-------

Districtwide 5 Year Capital Improvement Plan

Protect Types

Teaching & Learning Excellence

Student & Staff Well-Being

Resource Management

Family & Community Engagement

Districtwide 5 Year Capital Improvement Plan

Protect Types

Goals

Teaching & Learning Excellence

55%

Student & Staff Well-Being

20%

Resource Management

20%

Family & Community Engagement

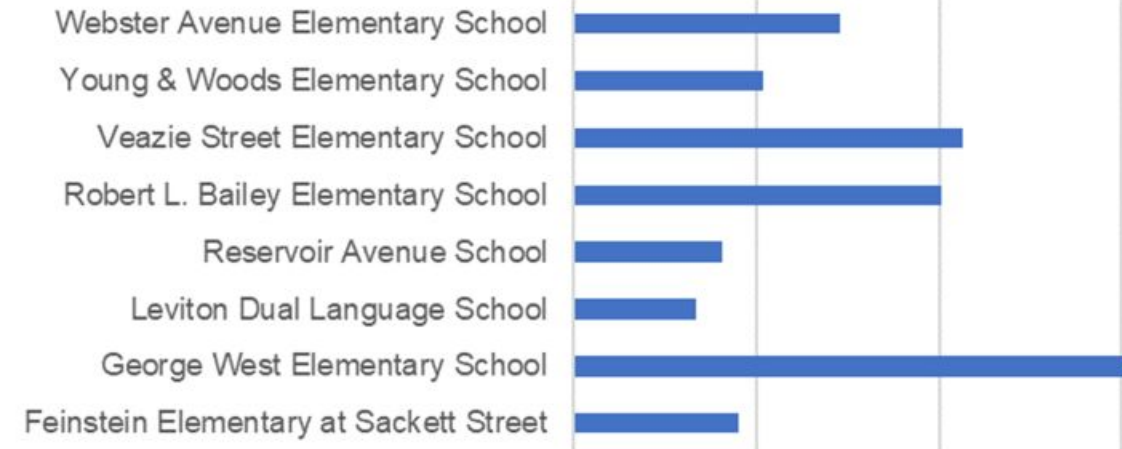
5%

RIDE Stage II

September 15, 2025

Districtwide 5 Year Capital Improvement Plan - ES

Providence Public Schools RIDE Stage II 2025 Capital Revolving Fund						
School Name		2026	2027	2028	2029	2030
Elementary Schools						
Feinstein Elementary at Sackett Street	\$1,799,399					
George West Elementary School	\$6,043,159					
Leviton Dual Language School	\$1,333,901					
Reservoir Avenue School	\$1,620,996					
Robert L. Bailey Elementary School	\$4,022,396					
Veazie Street Elementary School	\$4,250,414					
Young & Woods Elementary School	\$2,079,908					
Webster Avenue Elementary School	\$2,910,412					



RIDE Stage II

September 15, 2025

Districtwide 5 Year Capital Improvement Plan - MS

Providence Public Schools RIDE Stage II 2025 Capital Revolving Fund						
School Name		2026	2027	2028	2029	2030
Middle Schools						
Esek Hopkins Middle School	\$3,786,251					
Nathan Bishop Middle School	\$1,237,040					

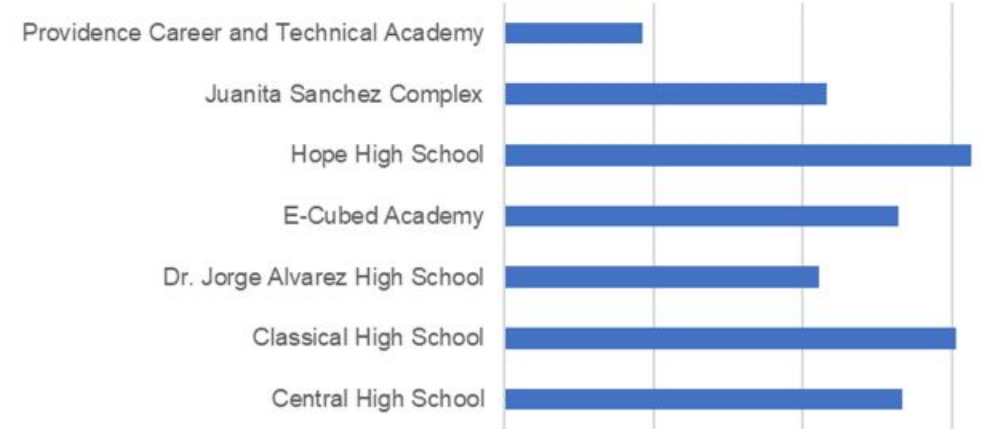


RIDE Stage II

September 15, 2025

Districtwide 5 Year Capital Improvement Plan - HS

Providence Public Schools RIDE Stage II 2025 Capital Revolving Fund						
School Name		2026	2027	2028	2029	2030
High Schools						
Central High School	\$2,662,191					
Classical High School	\$3,028,713					
Dr. Jorge Alvarez High School	\$2,104,140					
E-Cubed Academy	\$2,640,355					
Hope High School	\$3,129,911					
Juanita Sanchez Complex	\$2,159,136					
Providence Career and Technical Academy	\$920,034					



RIDE Stage II

September 15, 2025

Districtwide 5 Year Capital Improvement Plan – Times 2

Providence Public Schools RIDE Stage II 2025 Capital Revolving Fund						
School Name		2026	2027	2028	2029	2030
Times2 Academy	\$9,514,805					



Providence
Schools



STUDIO
JAED

Updates from Downes Construction

- **Phase two projects**

- Frank Spaziano MS → **In construction**
- Mary Fogarty PK-8 School → **In schematic design**
- Harry Kizirian PK-8 School → **In schematic design**

- **Phase three projects**

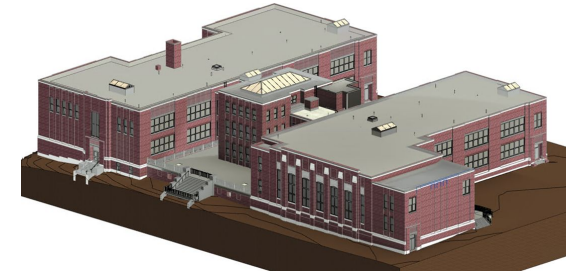
- Mount Pleasant Early College & Career Academy (MPECCA) → **In design**
- Robert F. Kennedy Pk-8 School → **In schematic design**
- Lima/Stuart Pk-8 School → **In schematic design**
- Asa Messer & W. Broadway PK-8 → **In schematic design**



Project Update

School Name	Project Budget	Student Capacity	Completion Date
D'Abate Elementary School	\$22,000,000	365	Completed
Frank Spaziano Elementary School	\$44,000,000	684	Completed
George West Elementary School	\$525,000	601	Completed
Pleasant View Elementary School	\$22,555,431	418	Completed
Esek Hopkins Middle School	\$450,000	595	Completed
Nathanael Greene Middle School- Phase 1 Completed	\$2,000,000	772	Completed
Classical High School - Phase 1 completed	\$40,278,711	1113	Completed
Hope High School – Phase 1 completed	\$18,000,000	1135	Completed
Narducci Learning Center	\$30,500,000	700	Completed

School Name	Student Capacity	Completion Date
Construction		
Frank D Spaziano Middle School	312 (est)	Mid 2026
Design		
Messer/ W Broadway Pk-8 School	972 (est)	Summer 2027 (est)
Lima/Stuart PK-8 School	972 (est)	Summer 2027 (est)
Mt. Pleasant Early Career and College Academy	1000 (est)	Winter 2028 (est)
RFK PK-8 * advanced to phase 3	858 (est)	Summer 2027 (est)
Harry Kizirian PK-8	858 (est)	Summer 2027 (est)
Mary Fogarty PK-8	858 (est)	Summer 2027 (est)



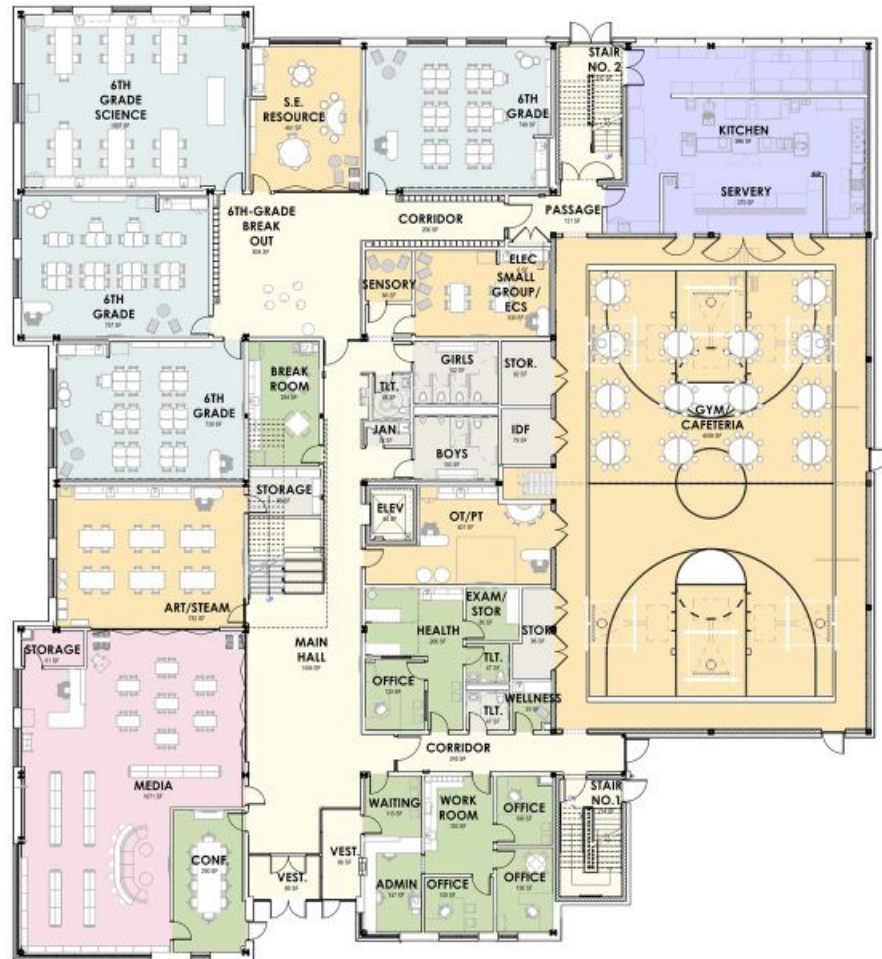
100% CD – View from Laban

Providence
Schools

Tecton
ARCHITECTS



Tecton
ARCHITECTS

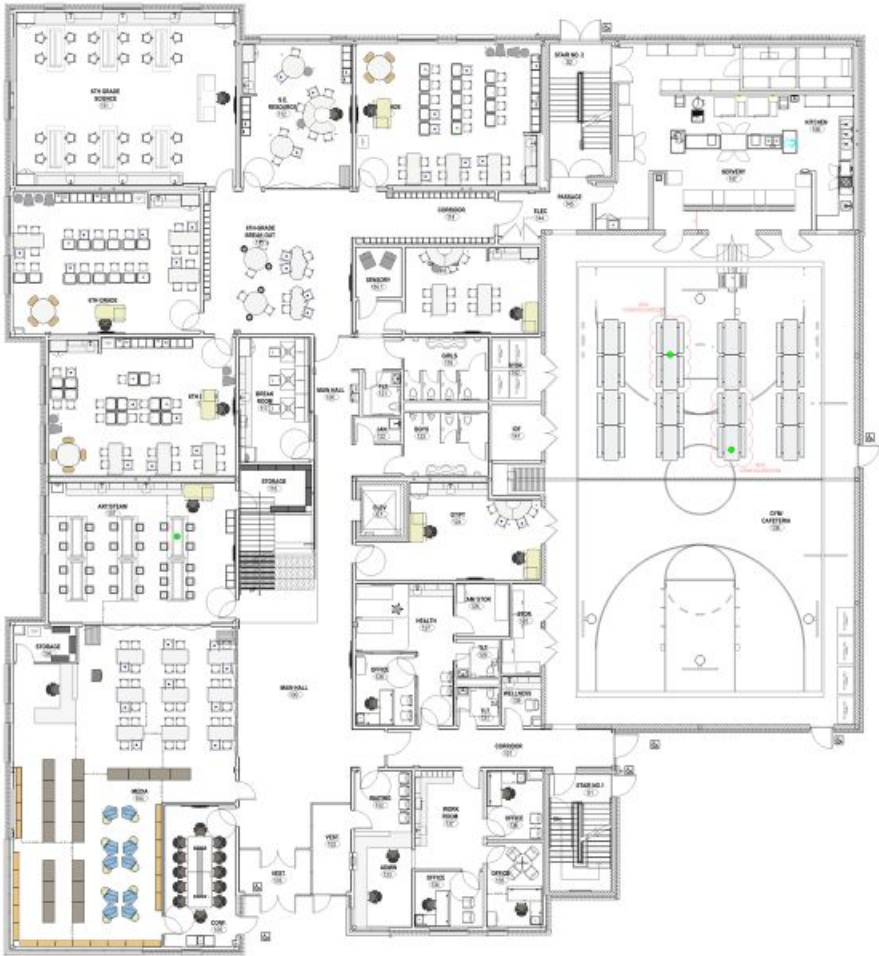


Main Level



Upper Level

FURNITURE UPDATE



Main Level



Upper Level

CONSTRUCTION PROGRESS



West Elevation

Exterior sheathing, window blocking, and temporary windows are complete. AVB install is continuing around the building. Roof insulation and membrane install has started as well.

South Elevation

CMU wall install is ongoing on the gym exterior as well as interior gym walls. Sheathing and AVB continuing.

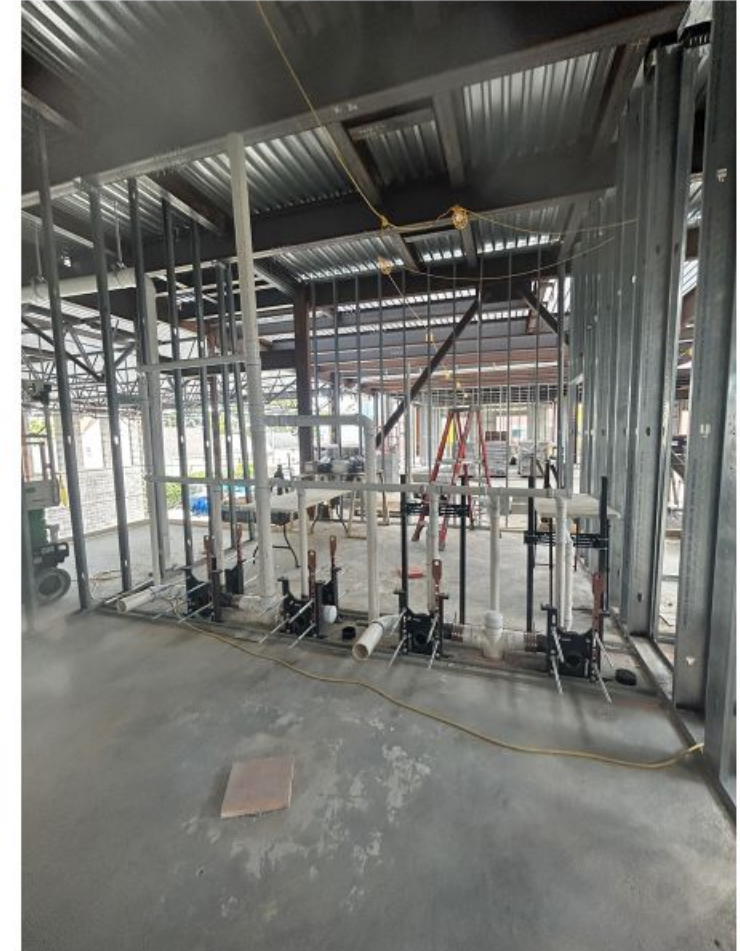


CONSTRUCTION PROGRESS



Gym / Café

Interior CMU walls in progress. Interior framing is substantially complete.



Upper-Level gang Bathroom

MEP rough-in continues in the upper level.

Mary E. Fogarty School



Providence
Schools



RIDE Rhode Island
Department
of Education

MARY E. FOGARTY ELEMENTARY SCHOOL
PRE K - GRADE 5 | 3 TRACK
GRADE 6 - GRADE 8 | 4 TRACK



DOWNES
CONSTRUCTION

Gilbane



Mary E. Fogarty School

Project Summary

- PK-5 Three Track
6-8 Four Track
- Approximately 120,000 SF



Project Summary

- Project Completion 2027
- Status: Schematic Design
- PPSD, SBC, City of Providence Review



Providence
Schools



RIDE Rhode Island
Department
of Education

MARY E. FOGARTY ELEMENTARY SCHOOL
PRE K - GRADE 5 | 3 TRACK
GRADE 6 - GRADE 8 | 4 TRACK



DOWNES
CONSTRUCTION

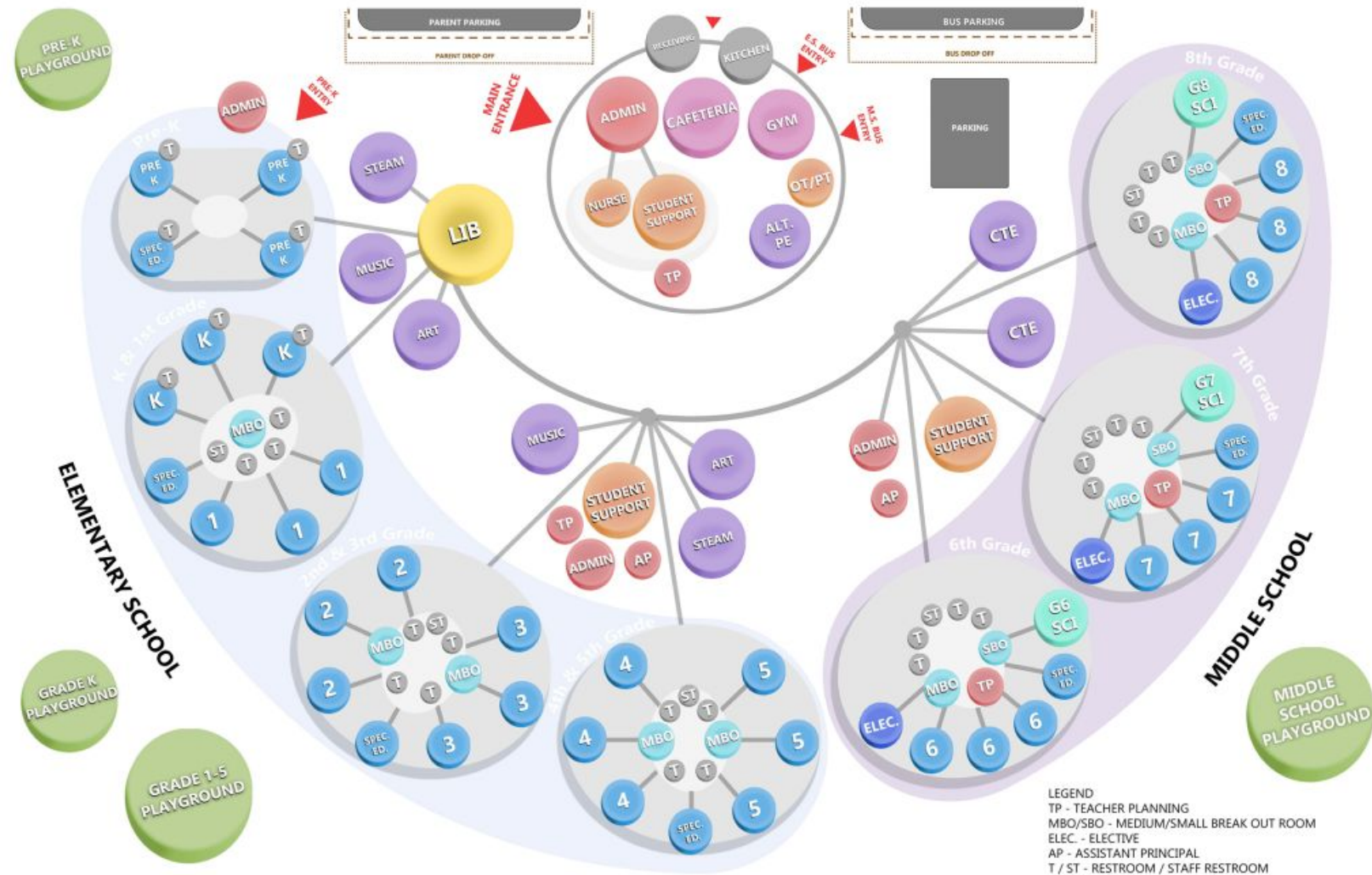
Gilbane

TORRES
ARCHITECTS

ta

Mary E. Fogarty School

Bubble Diagram



First Floor Plan

- 53,416 sf (gross)
- 38,991 sf (net)

SQUARE FOOTAGE BREAKDOWN

- Classrooms - 10,947 sf
- Science Lab - -
- Specialties - 4,735 sf
- Administration - 3,265 sf
- Student Support - 1,776 sf
- Cafeteria - 6,235 sf
- Gymnasium - 5,791 sf
- Custodial / Maintenance - 130 sf
- Common Areas (Media Center) - 4,818 sf

TOTAL

PPSD School Design Standard
- 123,339 sf (gross)
- 88,100 sf (net)

Current Design
- 121,953 sf (gross)
- 86,285 sf (net)

Delta (Current design vs. PPSP Standard)
- -1,386 sf (gross)
- -1,815 sf (net)

SQUARE FOOTAGE BREAKDOWN

- Classrooms - 39,502 sf
- Science Lab - 5,135 sf
- Specialties - 11,470 sf
- Administration - 7,534 sf
- Student Support - 3,756 sf
- Cafeteria - 6,235 sf
- Gymnasium - 5,791 sf
- Custodial / Maintenance - 753 sf
- Common Area (M.C.) - 4,818 sf



- | | |
|---|---------------------------------|
|  | SCIENCE LABS |
|  | CLASSROOMS |
|  | BREAK-OUT ROOMS |
|  | CAFETERIA |
|  | MEDIA CENTER |
|  | ADMINISTRATION |
|  | ART / STEAM / CTE / STAGE |
|  | STUDENT SUPPORT / HEALTH OFFICE |
|  | PLAYGROUND |
|  | SERVICE |
|  | GYMNASIUM |



RIDE

Rhode Island
Department
of Education

MARY E. FOGARTY ELEMENTARY SCHOOL
PRE K - GRADE 5 | 3 TRACK
GRADE 6 - GRADE 8 | 4 TRACK



DOWNES
CONSTRUCTION

Gilbane

24



Mary E. Fogarty School

Second Floor Plan

SECOND FLOOR

- 32,729 sf (gross)
- 22,305 sf (net)

SQUARE FOOTAGE BREAKDOWN

- Classrooms - 13,583 sf
- Science Lab - 988 sf
- Specialties - 4,597 sf
- Administration - 2,157 sf
- Student Support - 925 sf
- Cafeteria - -
- Gymnasium - -
- Custodial / Maintenance - 55 sf
- Common Area - -

TOTAL

- PPSD School Design Standard
- 123,339 sf (gross)
- 88,100 sf (net)

- Current Design
- 121,953 sf (gross)
- 86,285 sf (net)

- Delta (Current design vs. PPSP Standard)
- -1,386 sf (gross)
- -1,815 sf (net)

SQUARE FOOTAGE BREAKDOWN

- Classrooms - 39,502 sf
- Science Lab - 5,135 sf
- Specialties - 11,470 sf
- Administration - 7,534 sf
- Student Support - 3,756 sf
- Cafeteria - 6,235 sf
- Gymnasium - 5,791 sf
- Custodial / Maintenance - 753 sf
- Common Area (M.C.) - 4,818 sf



LEGEND

	SCIENCE LABS
	CLASSROOMS
	BREAK-OUT ROOMS
	CAFETERIA
	MEDIA CENTER
	ADMINISTRATION
	ART / STEAM / CTE / STAGE
	STUDENT SUPPORT / HEALTH OFFICE
	PLAYGROUND
	SERVICE
	GYMNASIUM



Providence
Schools



RIDE Rhode Island
Department
of Education

MARY E. FOGARTY ELEMENTARY SCHOOL
PRE K - GRADE 5 | 3 TRACK
GRADE 6 - GRADE 8 | 4 TRACK



DOWNES
CONSTRUCTION

Gilbane

TORREDO
ARCHITECTS



Mary E. Fogarty School

Third Floor Plan

THIRD FLOOR

- 35,808 sf (gross)
- 24,989 sf (net)

SQUARE FOOTAGE BREAKDOWN

- Classrooms - 14,972 sf
- Science Lab - 4,147 sf
- Specialties - 2,138 sf
- Administration - 2,112 sf
- Student Support - 1,052 sf
- Cafeteria - -
- Gymnasium - -
- Custodial / Maintenance - 568 sf
- Common Area - -

TOTAL

- PPSD School Design Standard
- 123,339 sf (gross)
- 88,100 sf (net)

- Current Design
- 121,953 sf (gross)
- 86,285 sf (net)

- Delta (Current design vs. PPSD Standard)
- -1,386 sf (gross)
- -1,815 sf (net)

SQUARE FOOTAGE BREAKDOWN

- Classrooms - 39,502 sf
- Science Lab - 5,135 sf
- Specialties - 11,470 sf
- Administration - 7,534 sf
- Student Support - 3,756 sf
- Cafeteria - 6,235 sf
- Gymnasium - 5,791 sf
- Custodial / Maintenance - 753 sf
- Common Area (M.C.) - 4,818 sf



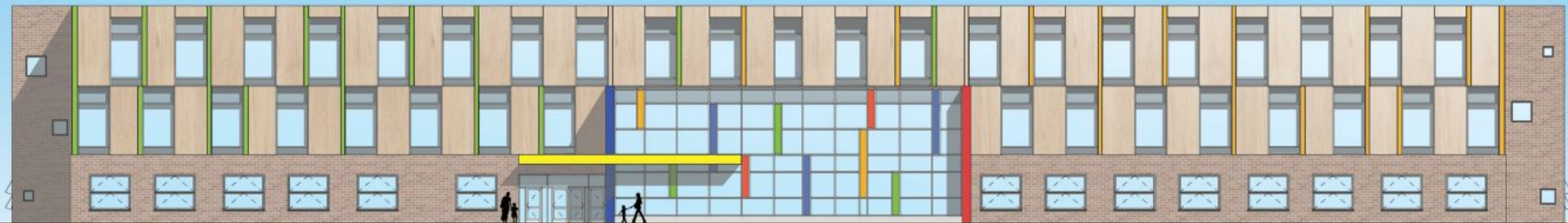
LEGEND

	SCIENCE LABS
	CLASSROOMS
	BREAK-OUT ROOMS
	CAFETERIA
	MEDIA CENTER
	ADMINISTRATION
	ART / STEAM / CTE / STAGE
	STUDENT SUPPORT / HEALTH OFFICE
	PLAYGROUND
	SERVICE
	GYMNASIUM



Mary E. Fogarty School

Front Elevation



Providence
Schools



RIDE Rhode Island
Department
of Education

MARY E. FOGARTY ELEMENTARY SCHOOL
PRE K - GRADE 5 | 3 TRACK
GRADE 6 - GRADE 8 | 4 TRACK



DOWNES
CONSTRUCTION

Gilbane

TORRES
ARCHITECTS

ta

Harry Kizirian School

PK-Grade 5 | 3 Track
Grades 6-8 | 4 Track



Providence
Schools



Harry Kizirian School

PK-Grade 5 | 3 Track
Grades 6-8 | 4 Track



Providence
Schools



DOWNES
CONSTRUCTION



STUDIO
JAED



DIMEO

Harry Kizirian School

PK-Grade 5 | 3 Track
Grades 6-8 | 4 Track



Providence
Schools



DOWNES
CONSTRUCTION



STUDIO
JAED



DIMEO

Harry Kizirian School

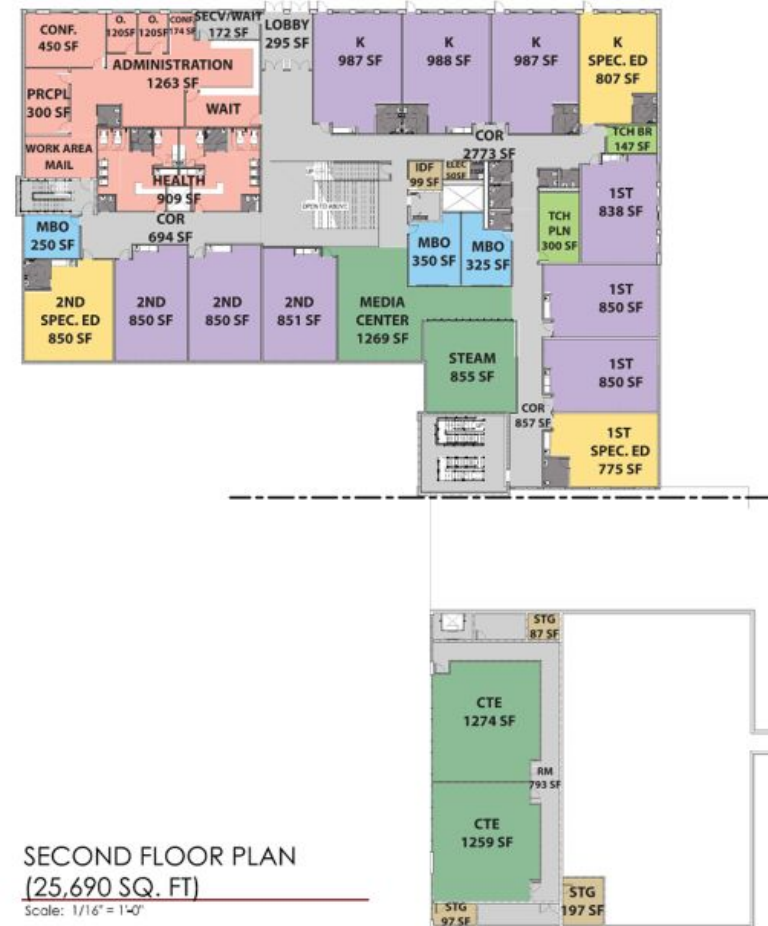
PK-Grade 5 | 3 Track
Grades 6-8 | 4 Track



Providence
Schools



New Kizirian PK-8



Providence
Schools



STUDIO
JAED

DIMEO

New Kizirian PK-8



An architectural rendering of the Mount Pleasant Early College & Career Academy. The image shows a large, multi-story brick building with a modern glass-enclosed section. A sign on the brick part of the building reads "MPECCA". The building is surrounded by a landscaped area with trees, a paved plaza, and a parking lot with several cars. A yellow school bus is visible on a road in the foreground. The background shows a line of trees and a clear sky.

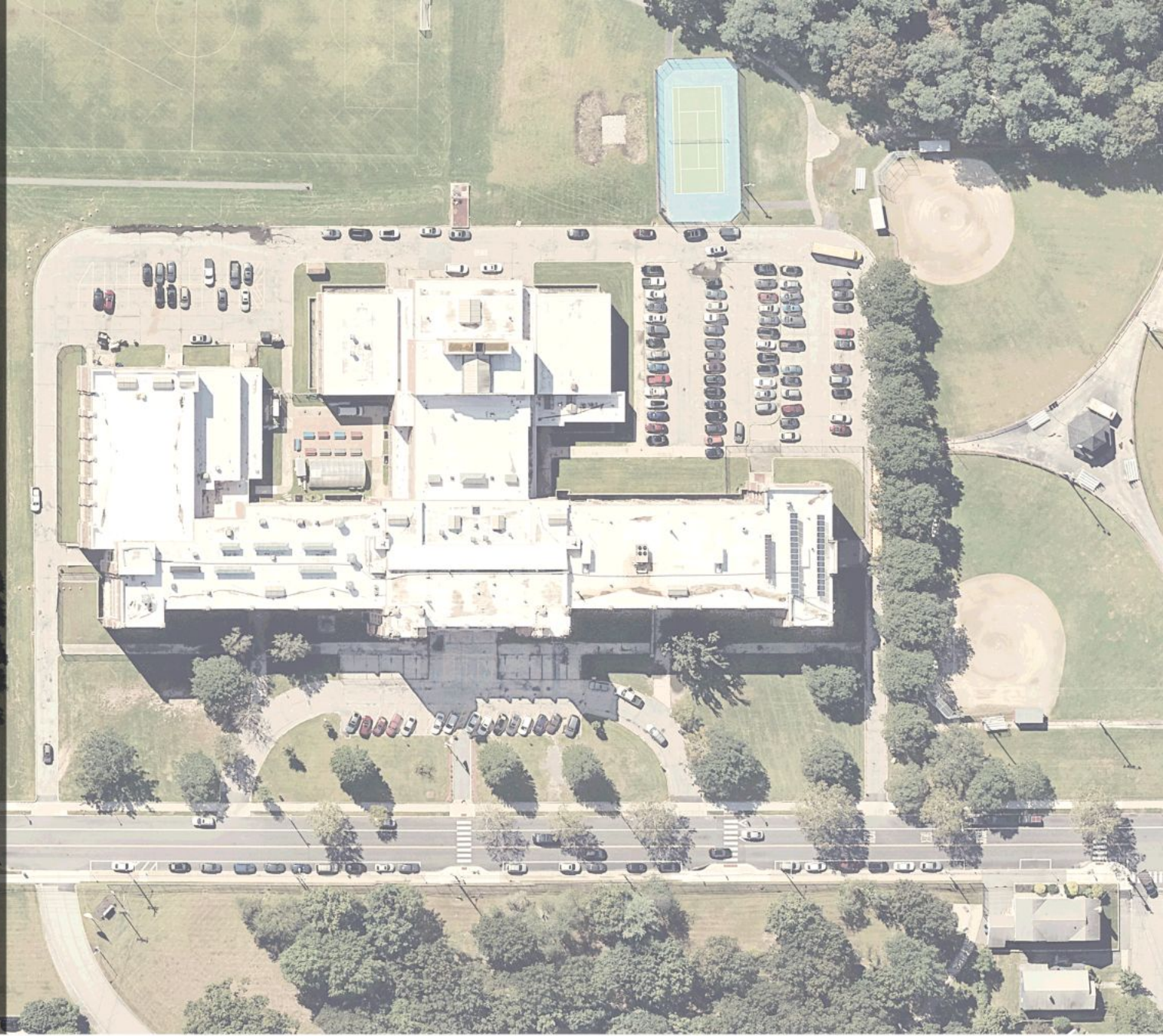
MOUNT PLEASANT EARLY COLLEGE & CAREER ACADEMY

COMMUNITY MEETING – PROJECT UPDATE

August 26, 2025

PROJECT OVERVIEW

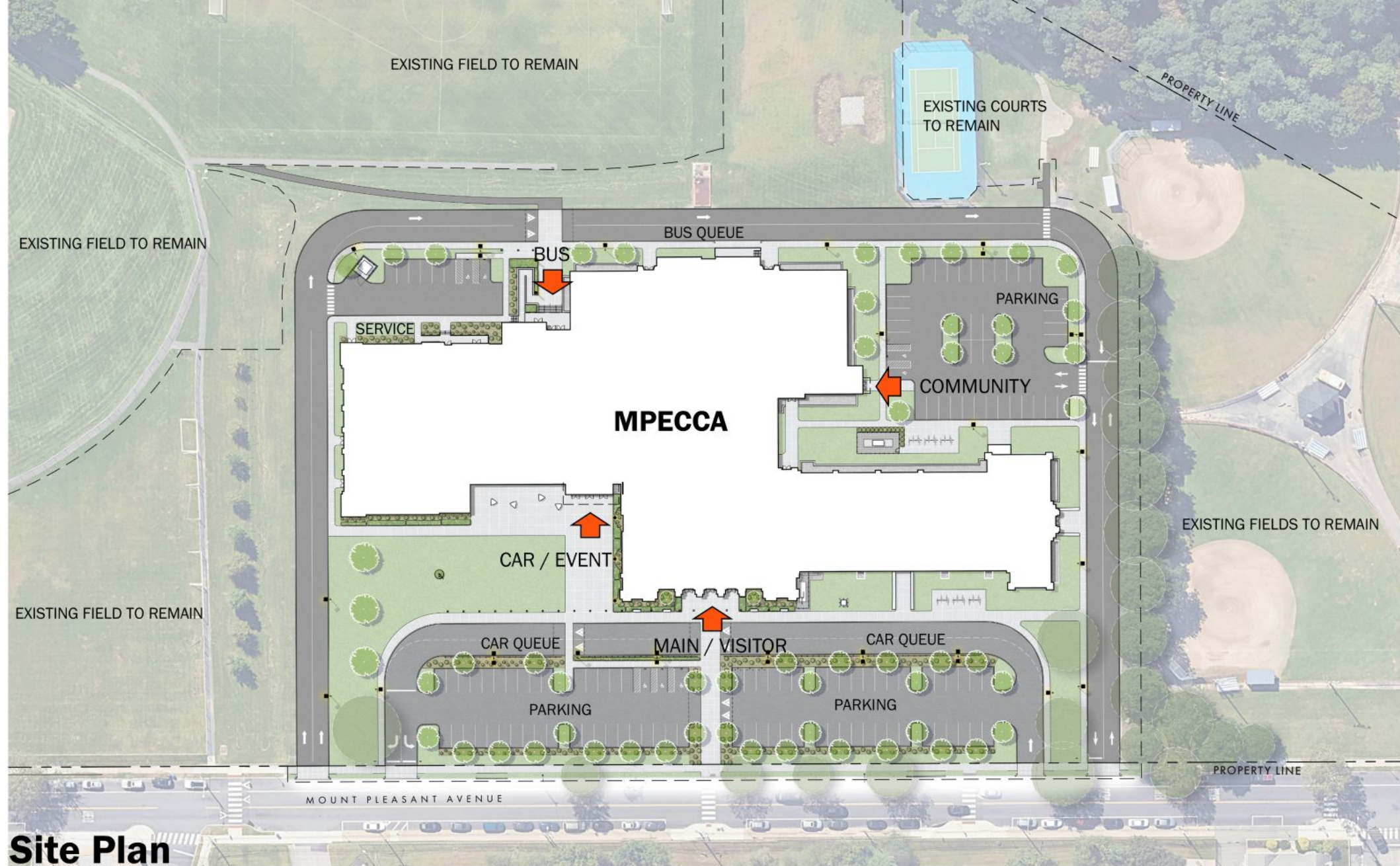
- \$110M Budget (all in)
- 224,500 GSF +/-
- 1,000 Student Enrollment
- Project Completion 2027
- Occupied School / Phased Construction







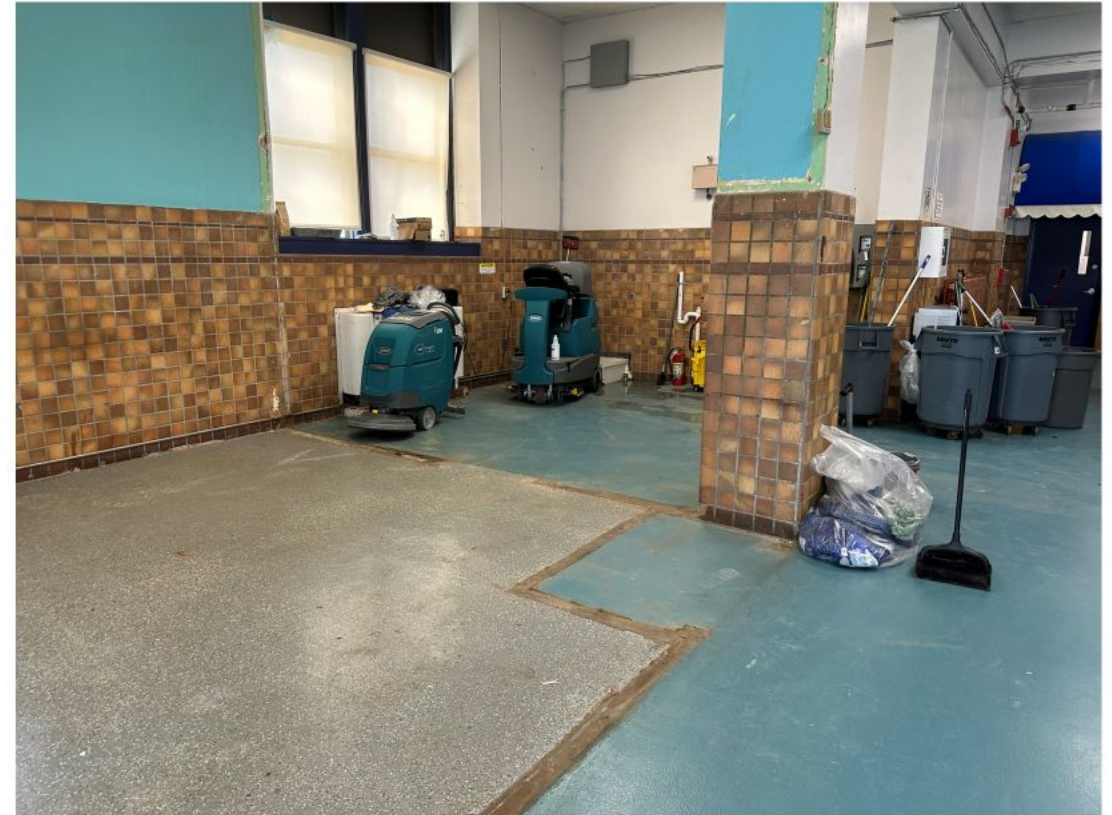
EXISTING WITH BASEMENT:	302,000 SF
EXISTING WITHOUT BASEMENT:	232,400 SF
<hr/>	
COMPLETED PROJECT TOTAL:	224,668 SF
NEW CONSTRUCTION:	41,512 SF
RENOVATION:	183,156 SF





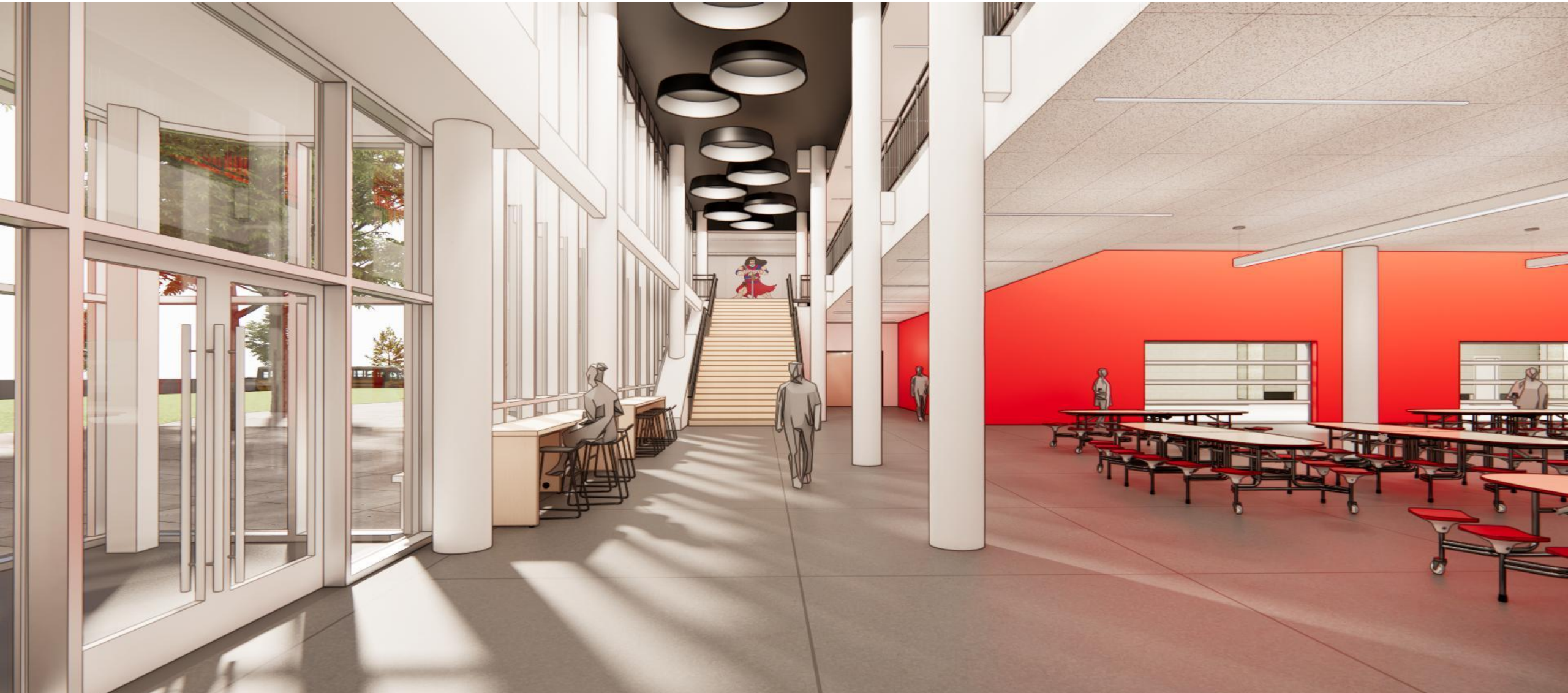
Swing Space Classrooms progress





Temporary Kitchen progress

Mount Pleasant Early College and Career Academy





Commons View 2



Commons View 2



Commons View 4



MOUNT PLEASANT AVE

Exterior View 1



MOUNT PLEASANT AVE

Exterior View 2



Exterior View 3



Exterior View 4



Exterior View 5



Exterior View 6

UPCOMING MILESTONES

- Swing Space in progress
- Design Developments documents are ready for submission
- Public Forum to be scheduled

Mount Pleasant Early College and Career Academy

60% Design Development Package to be submitted to RIDE

MOUNT PLEASANT EARLY COLLEGE AND CAREER ACADEMY HYBRID RENOVATION AND NEW HIGH SCHOOL BUILDING

434 MT. PLEASANT AVENUE
PROVIDENCE, RI 02908

Owner's Project Manager:	Design Build Manager:	Civil / Site / Traffic:	Landscape:	Structural:	Mech, Elec, & Plumb:	Theater:	Lighting Consultant:	Food Service:	Security:	Envelope Consultant:	Code Consultant:	Acoustical Consultant:
BORRES CONSTRUCTION	ADDISTON BACON CONSTRUCTION CO.	PARR	MOLA	RSE ASSOCIATES	CMTA	THEATRE PROJECT CONSULTANTS	HLB LIGHTING	CRANTREE MCGRATH	SECURE OUR CITY	RJ KENNEY	JR CONSULTING	CAVANAUGH TODD
301 METRO CENTER BLVD. SUITE 100 WARREN, RI 02886	201 INDEPENDENT PARK DRIVE EAST PROVIDENCE, RI 02915	100 LINCOLN ROAD SUITE 110 FOXBOROUGH, MA 01938	840 SUMMIT STREET SUITE 200A BOSTON, MA 02107	100 WASHINGTON STREET SUITE 200 PROVIDENCE, RI 02903	101 WORCESTER ROAD SUITE 200 PROVIDENCE, RI 02904	47 WATER STREET SOUTH BOSTON, MA 02126	300 STATE STREET SUITE 200 BOSTON, MA 02108	101 W MAIN STREET CRENSHAW, MA 01933	20 WALNUT STREET SUITE 1 WELLESLEY, MA 02158	72 WASHINGTON STREET P.O. BOX 116 PLAINVILLE, MA 01062	200 MAIN STREET SUITE 200 BOSTON, MA 02108	307 BOSTON POST ROAD BURLINGTON, MA 01803



RENDERING PROVIDED BY PLASANT EARLY COLLEGE AND CAREER ACADEMY



REGIONAL MAP



CITY MAP



LOCAL MAP

Committee members can
review using the link below



<https://www.dropbox.com/t/Ubs8T2Vtasp9TVg0>

ROBERT F KENNEDY PK-8 ELEMENTARY SCHOOL



Providence
Schools



Tecton
ARCHITECTS



ROBERT F KENNEDY PK-8 ELEMENTARY SCHOOL



NEW PK-8

- 3-Track Elementary School
- 4-Track Middle School
- 858 Students
- 124,600 GSF, 4 Stories
- \$75,146,684 Total Project Cost
- Occupancy for 2027/28 Year



ROBERT F KENNEDY PK-8 ELEMENTARY SCHOOL



RIDE
Rhode Island
Department
of Education



Providence
Schools

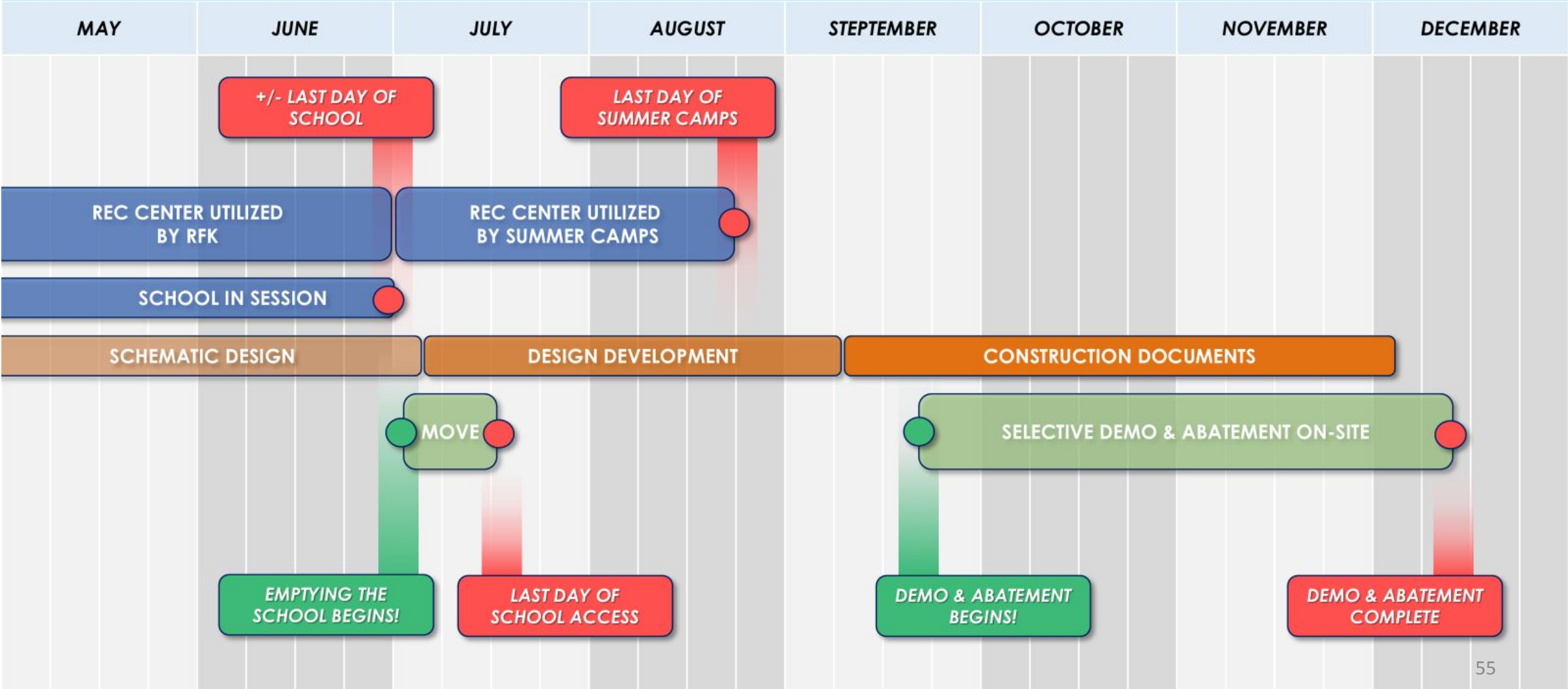


DOWNES CONSTRUCTION COMPANY
Building Excellence Since 1934



Tecton
ARCHITECTS

2025



ROBERT F KENNEDY PK-8 ELEMENTARY SCHOOL



RIDE
Rhode Island
Department
of Education



Providence
Schools



DOWNES CONSTRUCTION COMPANY
Building Excellence Since 1934



Tecton
ARCHITECTS

2025

JULY

AUGUST

PRINCIPAL & PPSD FLOORPLAN
REVIEW & COMMENT

LOC: ZOOM

STAFF FLOORPLAN REVIEW &
COMMENT

LOC: ZOOM

...CONTINUED DESIGN REFINEMENT...

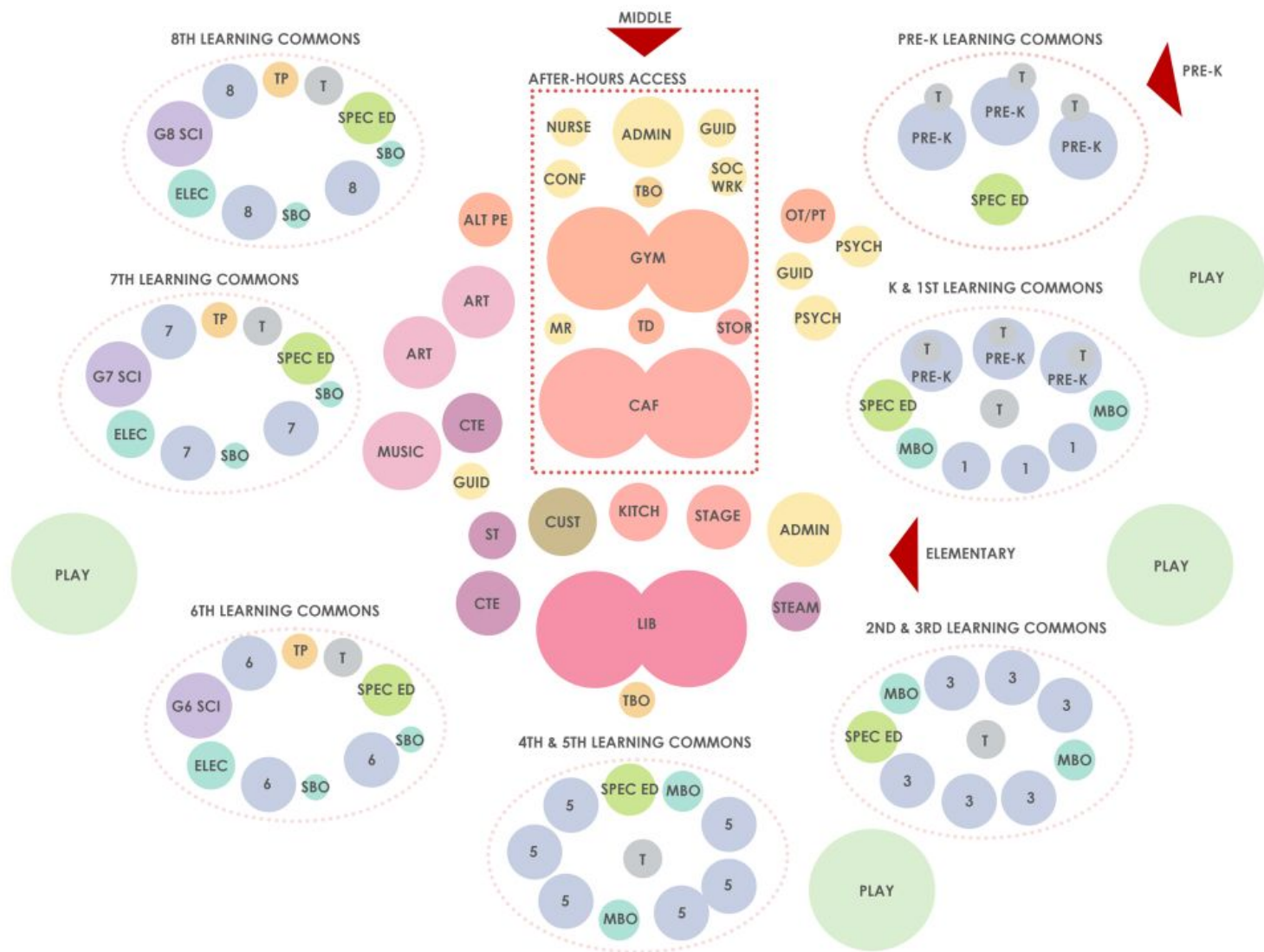
RIDE & PPSD FLOORPLAN REVIEW

LOC: RIDE OFFICES,
PROVIDENCE, RI

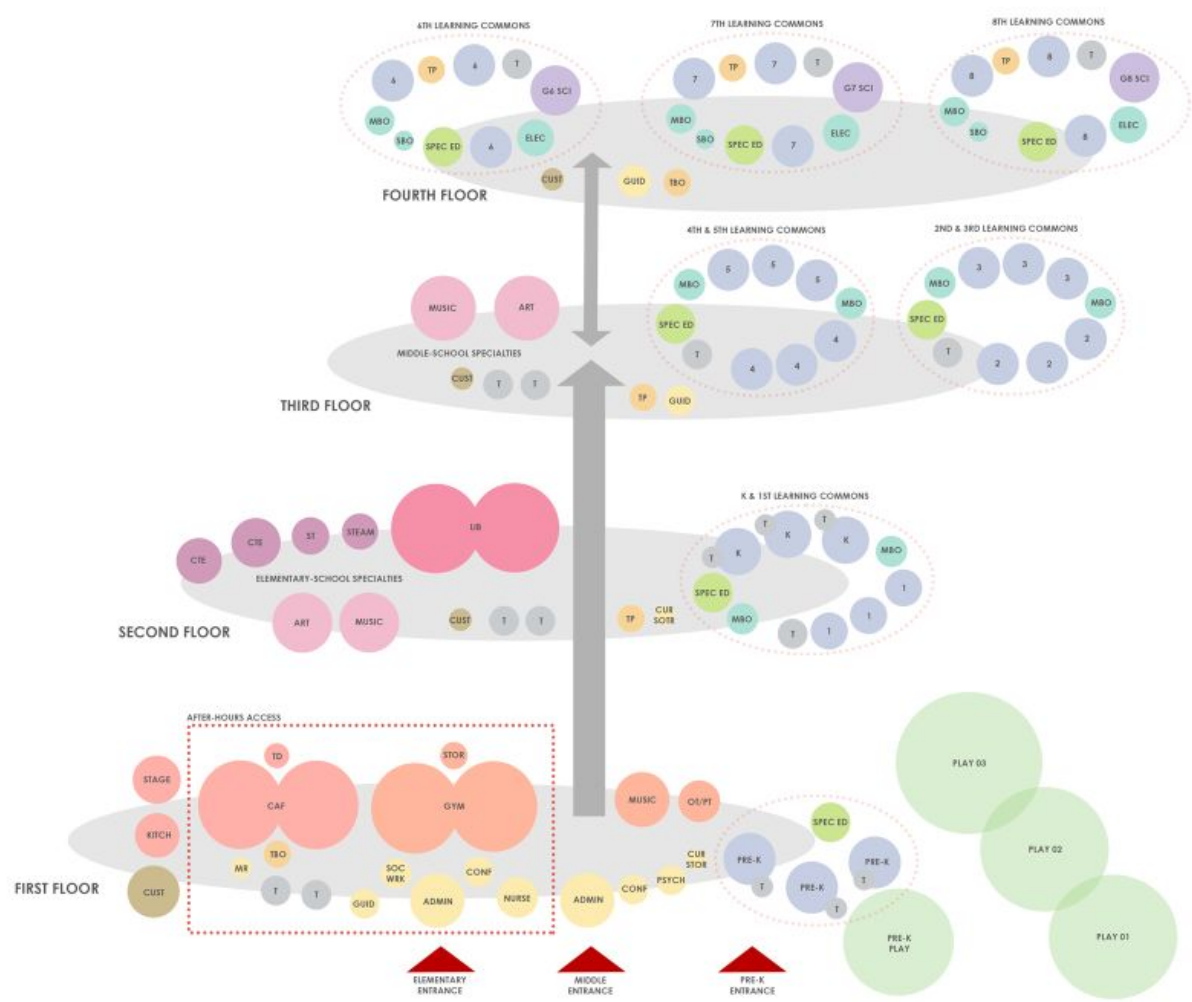
COMMUNITY ENGAGEMENT W/
STAFF, PARENTS & NEIGHBORS

LOC: MOUNT PLEASANT LIBRARY,
PROVIDENCE, RI

ROBERT F KENNEDY PK-8 ELEMENTARY SCHOOL



ROBERT F KENNEDY PK-8 ELEMENTARY SCHOOL



ROBERT F KENNEDY PK-8 ELEMENTARY SCHOOL



RIDE
Rhode Island
Department
of Education



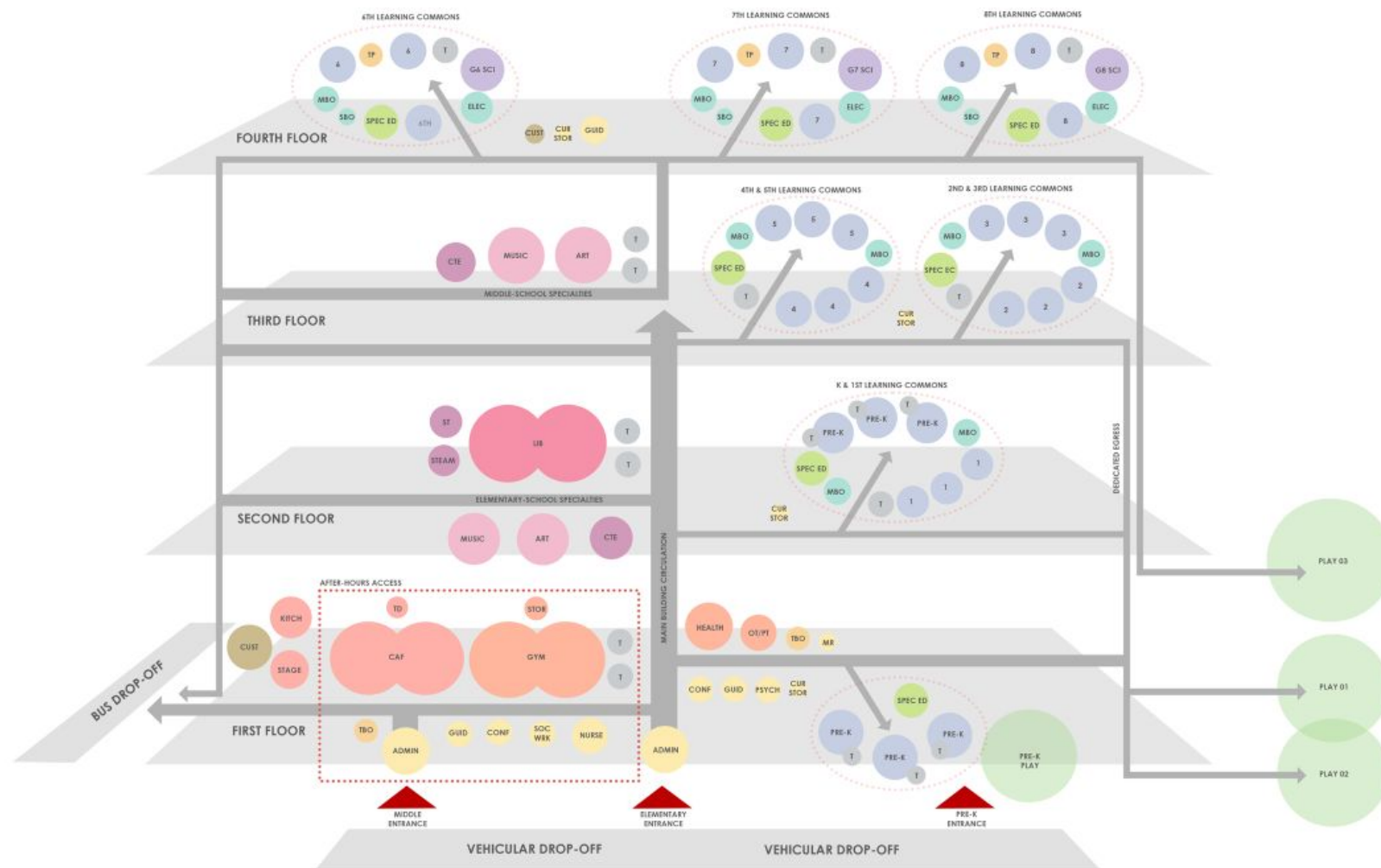
Providence
Schools



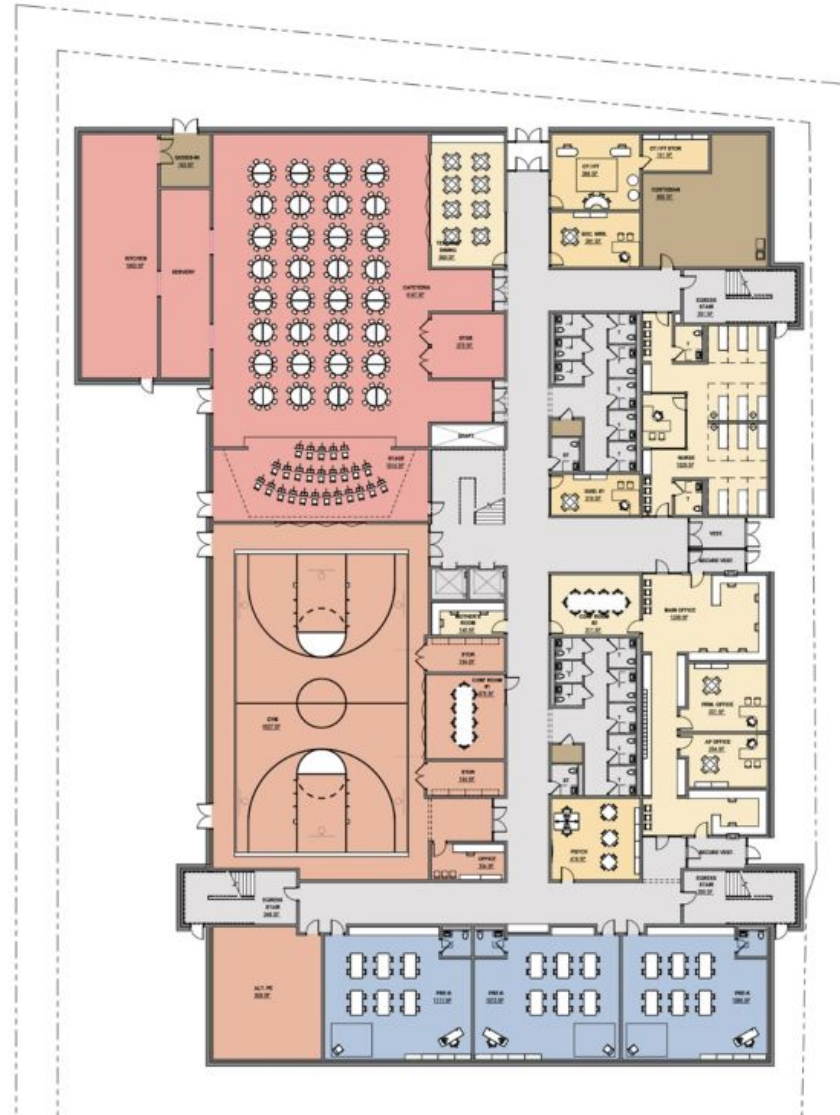
DOWNES CONSTRUCTION COMPANY
Building Excellence Since 1934



Tecton
ARCHITECTS



ROBERT F KENNEDY PK-8 ELEMENTARY SCHOOL



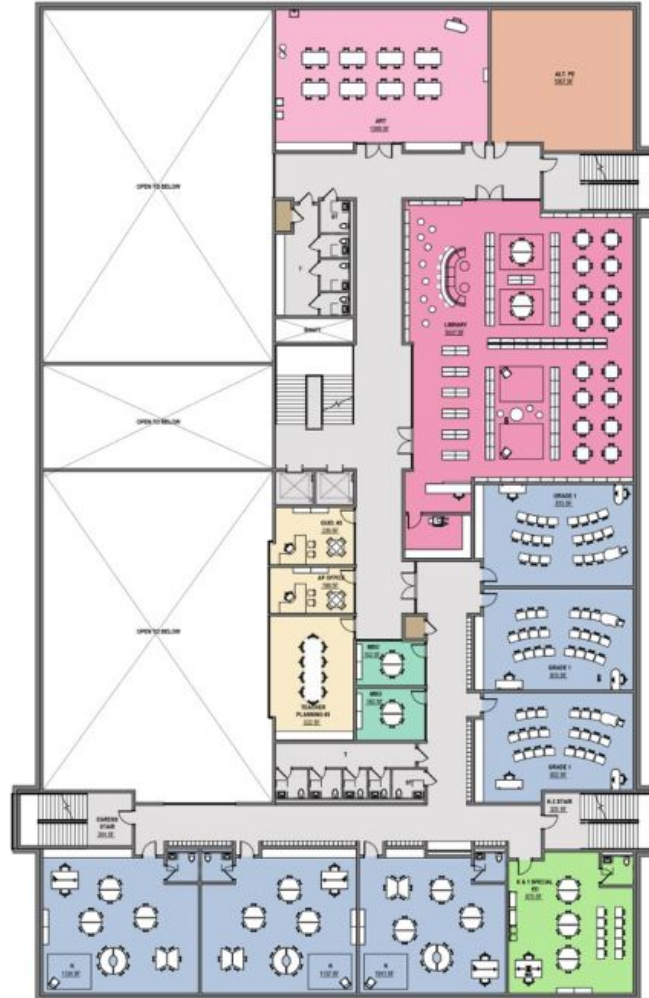
FIRST FLOOR
NOT TO SCALE



D DOWNES CONSTRUCTION COMPANY
Building Excellence Since 1934



Tecton
ARCHITECTS



61

Tecton
ARCHITECTS



ROBERT F KENNEDY PK-8 ELEMENTARY SCHOOL



FOURTH FLOOR
NOT TO SCALE

ROBERT F KENNEDY PK-8 ELEMENTARY SCHOOL



RIDE Rhode Island
Department
of Education



Providence
Schools



DOWNES CONSTRUCTION COMPANY
Building Excellence Since 1934



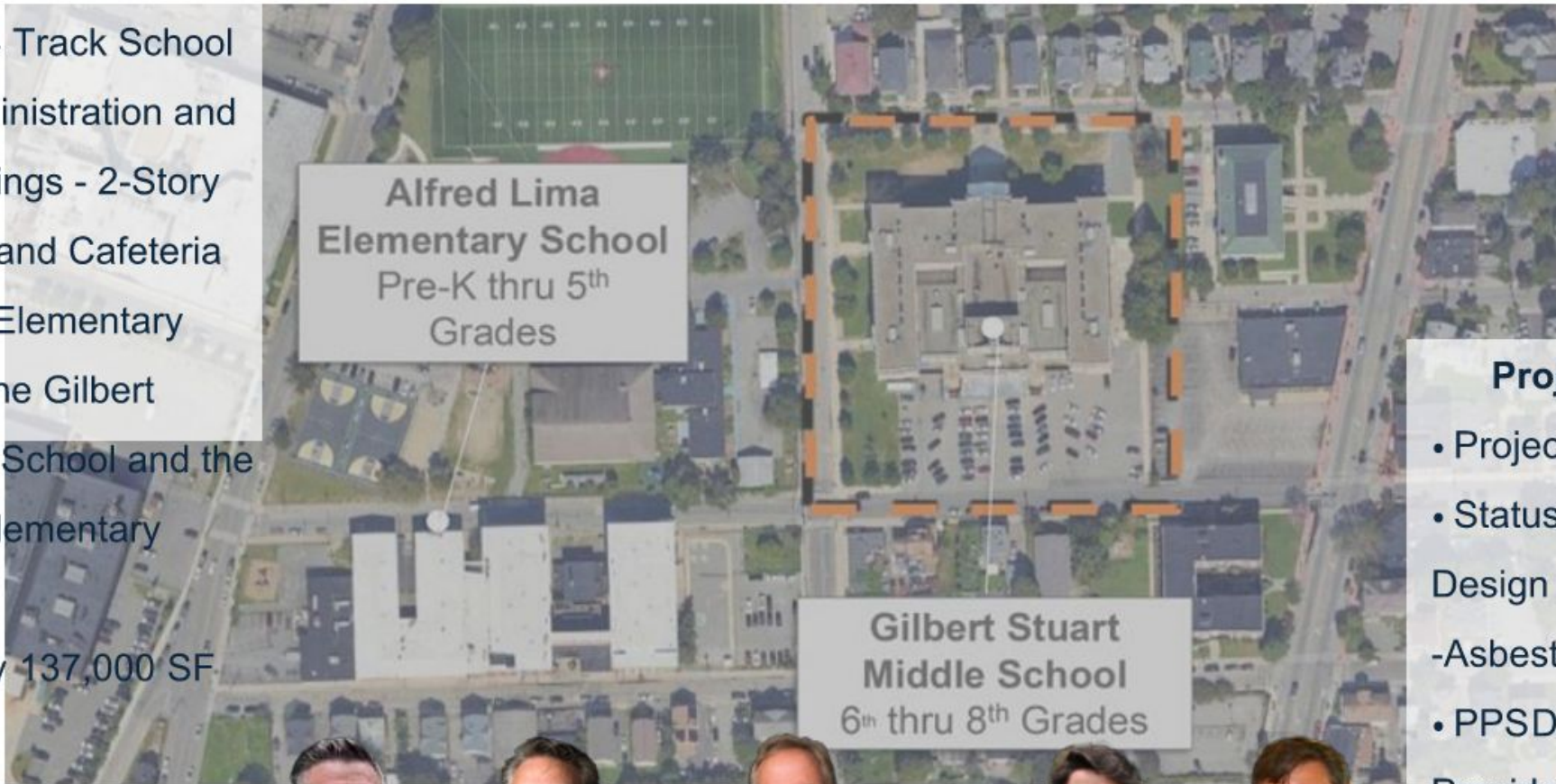
Tecton
ARCHITECTS



Lima Stuart School PK-8

- **Project Summary**

- PK- 8 New 4 Track School
 - 3-Story Administration and Classroom Wings - 2-Story Library, Gym and Cafeteria
- Alfred Lima Elementary School from the Gilbert Stuart Middle School and the Alfred Lima Elementary School
- Approximately 137,000 SF



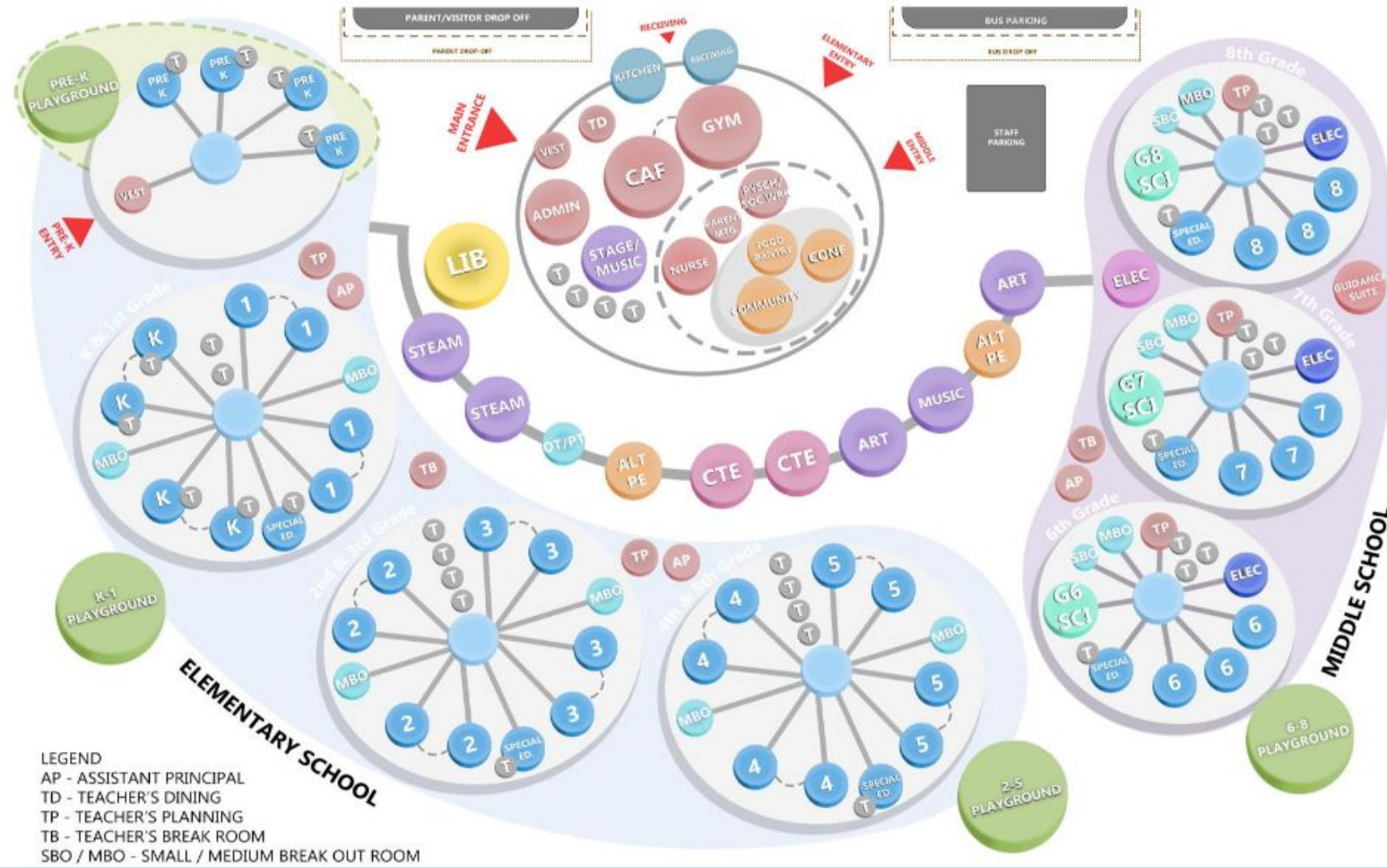
Project Summary

- Project Completion 2027
- Status: Conceptual/ Schematic Design & Demo Plans
- Asbestos Abatement Underway
- PPSD, SBC, RIDE, City of Providence Reviews



Lima Stuart School PK-8

Bubble Diagram



Lima Stuart School PK-8

Site Plan



First Floor

- 61,235 sf (gross)
- 46,803 sf (net)

- Classrooms - 13,801 sf
- Science Lab - -
- Specialties - 7,320 sf
- Administration - 3,660 sf
- Student Support - 1,344 sf
- Health Suite - 2,484 sf
- Cafeteria - 7,140 sf
- Gymnasium - 7,140 sf
- Custodial / Maintenance - 58 sf
- Common Areas (Media Center) - 3,980 sf

PPSD School Design Standard
- 137,907 sf (gross)
- 98,505 sf (net)

Current Design
- 136,198 sf (gross)
- 95,005 sf (net)

Delta (Current Design vs. PPSD Standard)
 -- 1,709 sf (gross)
 + 3,500 sf (net)

- Classrooms - 43,375 sf
- Science Lab - 4,943 sf
- Specialties - 15,848 sf
- Administration - 7,275 sf
- Student Support - 2,664 sf
- Health Suite - 2,484 sf
- Cafeteria - 7,240 sf
- Gymnasium - 7,140 sf
- Custodial / Maintenance - 3,396 sf
- Common Areas (Media Center) - 3,980 sf



Lima Stuart School PK-8

Second Floor

SECOND FLOOR

- 38,900 sf (gross)
- 22,212 sf (net)

SQUARE FOOTAGE BREAKDOWN

- Classrooms - 14,283 sf
- Science Lab - 856 sf
- Specialties - 5,932 sf
- Administration - 1,202 sf
- Student Support - 0 sf
- Health Suite - 0 sf
- Cafeteria - 0 sf
- Gymnasium - 0 sf
- Custodial / Maintenance - 795 sf
- Common Areas (Media Center) - 0 sf

TOTAL

- PPSD School Design Standard
- 137,907 sf (gross)
 - 98,505 sf (net)

- Current Design
- 136,198 sf (gross)
 - 95,005 sf (net)

- Delta (Current Design vs. PPSD Standard)
- - 1,709 sf (gross)
 - + 3,500 sf (net)

SQUARE FOOTAGE BREAKDOWN

- Classrooms - 43,375 sf
- Science Lab - 4,943 sf
- Specialties - 15,848 sf
- Administration - 7,275 sf
- Student Support - 2,664 sf
- Health Suite - 2,484 sf
- Cafeteria - 7,240 sf
- Gymnasium - 7,140 sf
- Custodial / Maintenance - 3,396 sf
- Common Areas (Media Center) - 3,980 sf



LEGEND

- SCIENCE LABS
- CLASSROOMS
- BREAK OUT ROOM
- CAFETERIA
- MEDIA CENTER
- ADMINISTRATION
- ART / STEAM / CTE / STAGE
- STUDENT SUPPORT / HEALTH
- PLAYGROUND
- SERVICE
- GYMNASIUM

Third Floor

- 38,518 sf (gross)
- 25,766 sf (net)

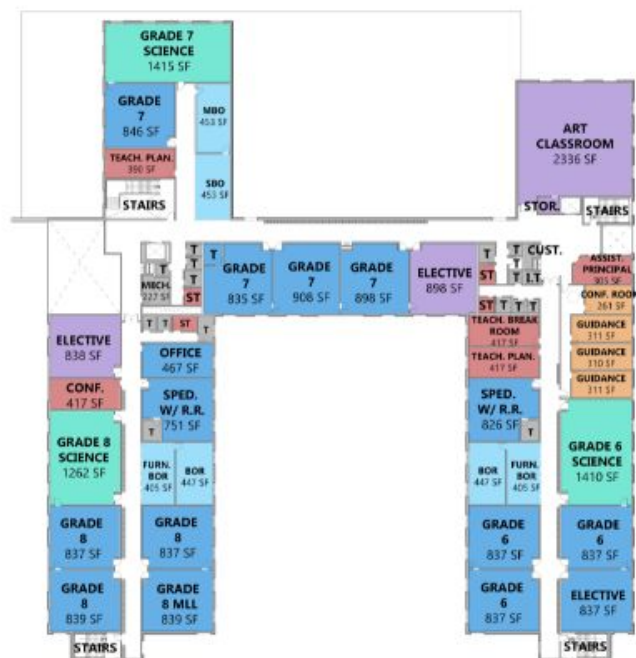
- Classrooms - 15,291 sf
- Science Lab - 4,087 sf
- Specialties - 2,596 sf
- Administration - 2,413 sf
- Student Support - 1,320 sf
- Health Suite - 0 sf
- Cafeteria - 0 sf
- Gymnasium - 0sf
- Custodial / Maintenance - 59 sf
- Common Areas (Media Center) - 0 sf

PPSD School Design Standard
- 137,907 sf (gross)
- 98,505 sf (net)

Current Design
- 136,198 sf (gross)
- 95,005 sf (net)

Delta (Current Design vs. PPSD Standard)
 -- 1,709 sf (gross)
 - + 3,500 sf (net)

- Classrooms - 43,375 sf
- Science Lab - 4,943 sf
- Specialties - 15,848 sf
- Administration - 7,275 sf
- Student Support - 2,664 sf
- Health Suite - 2,484 sf
- Cafeteria - 7,240 sf
- Gymnasium - 7,140 sf
- Custodial / Maintenance - 3,396 sf
- Common Areas (Media Center) - 3,980 sf



	SCIENCE LABS
	CLASSROOMS
	SHARED SPACES
	CAFETERIA
	MEDIA CENTER
	ADMINISTRATION
	ART / RESOURCE / TECH / STAGE
	WELLNESS SUITE
	PLAYGROUND
	SERVICE
	GYMNASIUM

New PK-8 Asa Messer/West Broadway

PK-Grade 8 | 4 Track



New PK-8 Asa Messer/West Broadway

PK-Grade 8 | 4 Track



New PK-8 Asa Messer/West Broadway

First Floor Plan



New PK-8 Asa Messer/West Broadway

Second Floor Plan



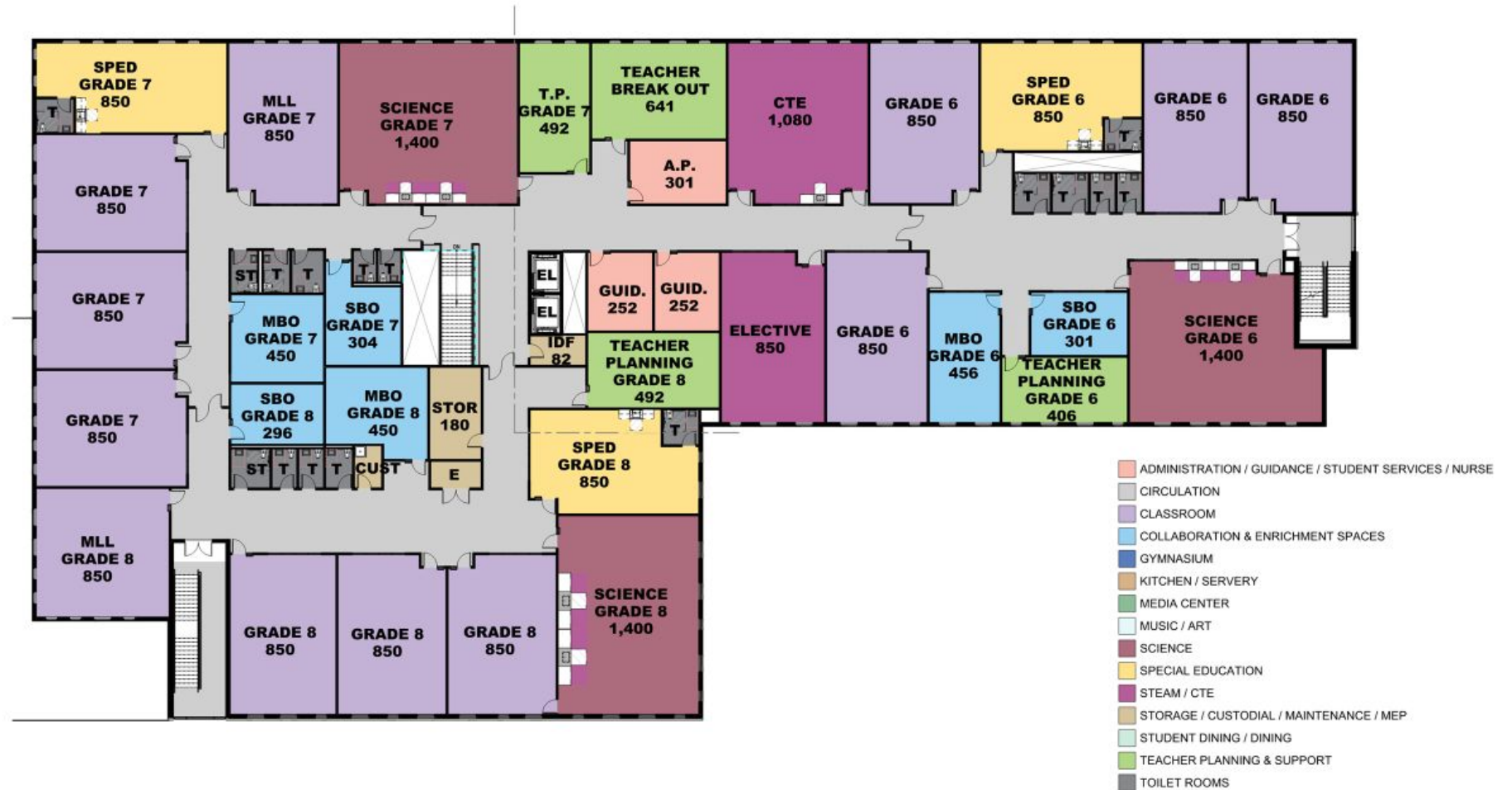
New PK-8 Asa Messer/West Broadway

Third Floor Plan



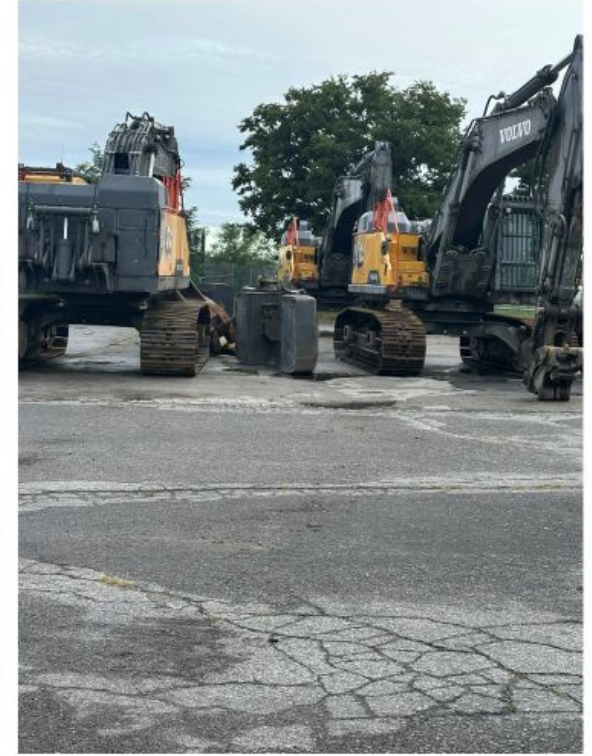
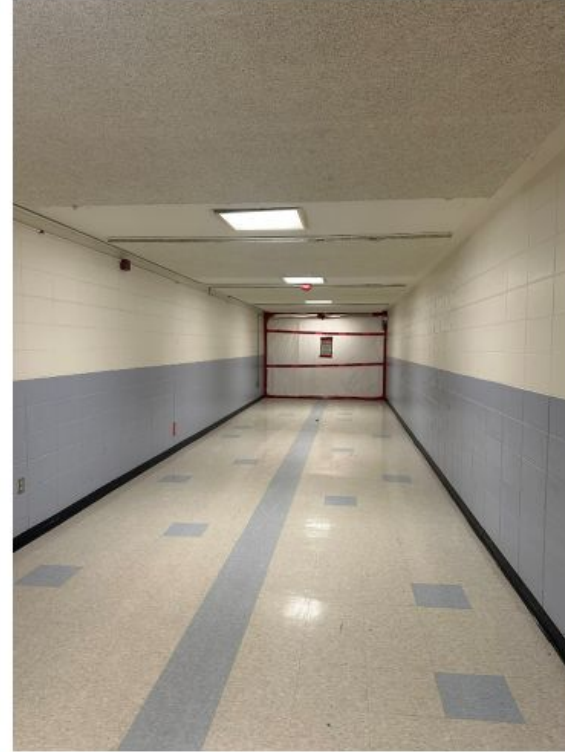
New PK-8 Asa Messer/West Broadway

Fourth Floor Plan



New PK-8 Asa Messer/West Broadway

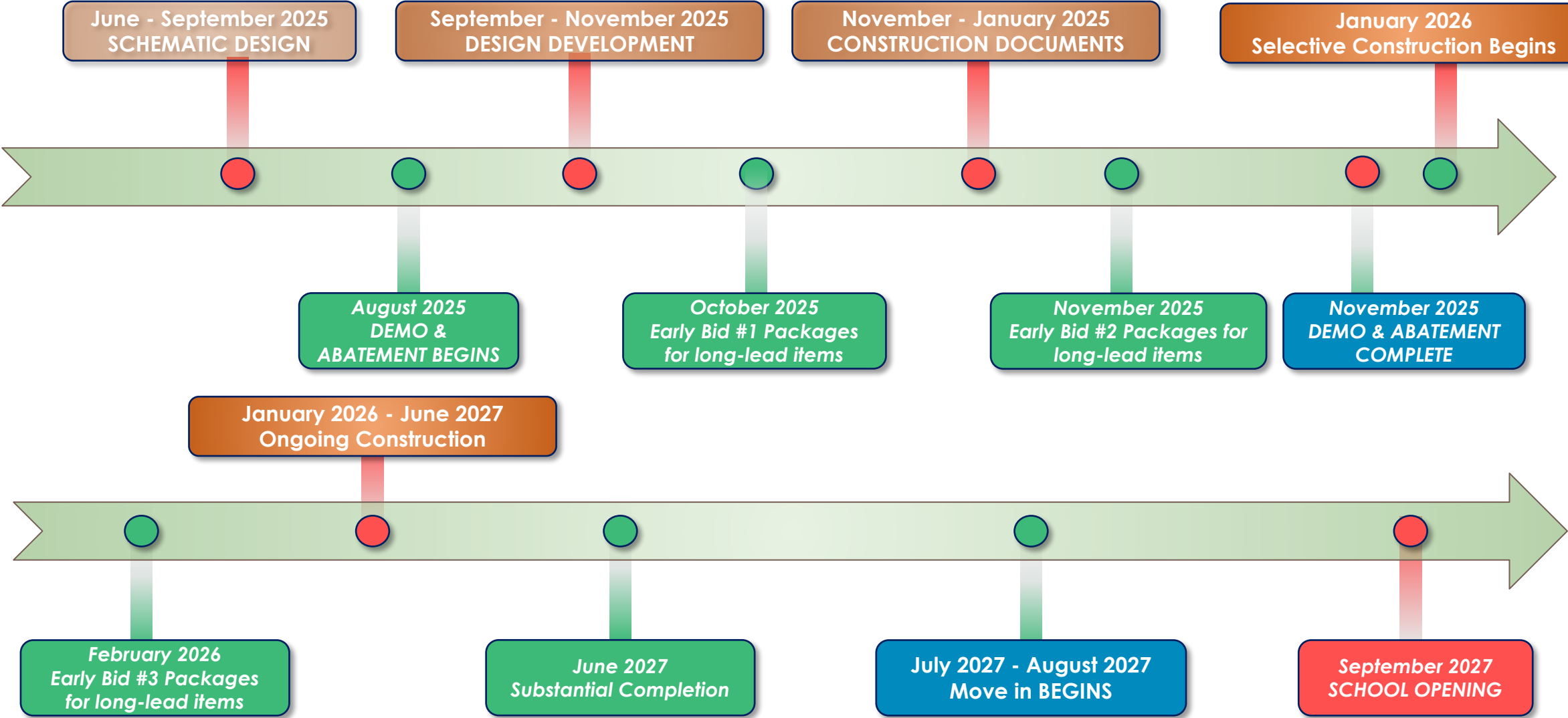
PK-Grade 8 | 4 Track



- Contractor has control of site
- Hazardous material abatement is well underway
- Abatement anticipated to be complete by 9/12/25 with demolition of the existing building to follow.

Reimagining Messer/West Broadway

Timeline through June 2027 → *This is fluid as levels of approval are needed.*



Action Item(s)

1. Approval of the Providence School District Stage II Documents. *The Providence School Building Committee approves the submission of the Providence School District Stage II Documents to RIDE for consideration.*
2. Approval of the Mount Pleasant Early College and Career Academy 60% Design Development Package Documents. *The Providence School Building Committee approves the submission of the Mount Pleasant Early College & Career Academy 60% Design Development Package Documents to RIDE for approval and authorizes Agostini/Perkins Eastman to proceed with the Construction Design Phase.*