

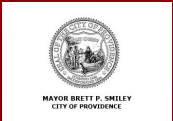
Providence School Building Committee

Capital School Construction Briefing

Agenda

- PPSD updates
 - Swing Space updates & move management
- Construction updates
 - Phase 2 projects
 - Phase 3 projects
- Action Items

July 22, 2025



Providence
Schools



Swing Space Updates

- **Asa Messer @ Carl G. Lauro**
 - Academic year 2025-2026
 - Academic year 2026-2027
 - Academic year 2027-2028 → **NEW Build with W. Broadway**
- **Robert F. Kennedy @ Hopkins MS**
 - Academic year 2025-2026
 - Academic year 2026-2027
 - Academic year 2027-2028 → **NEW Build**

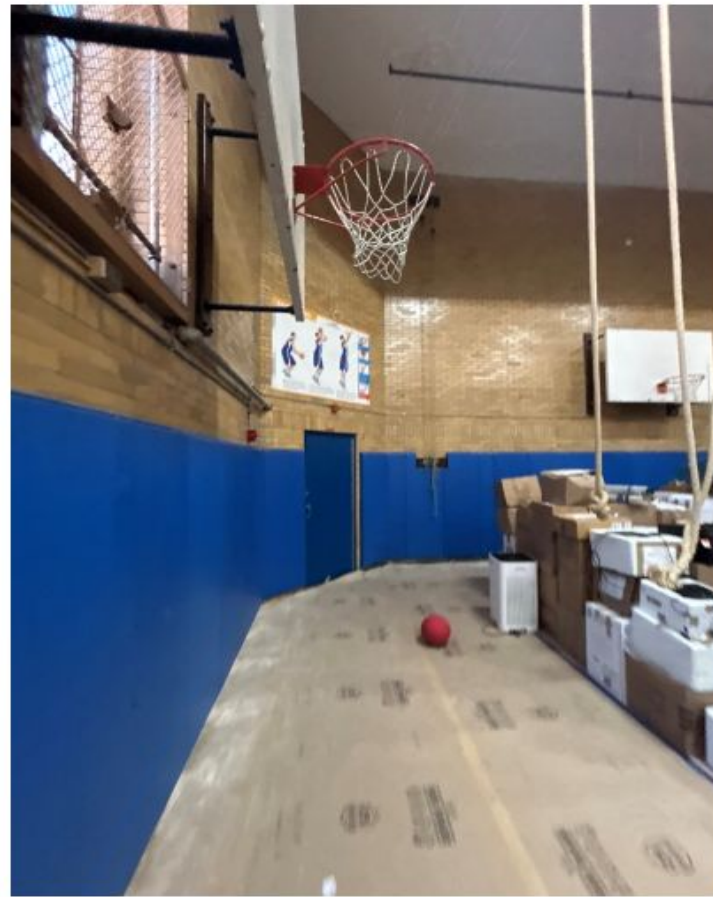


SA MESSER AT CARL LAURO

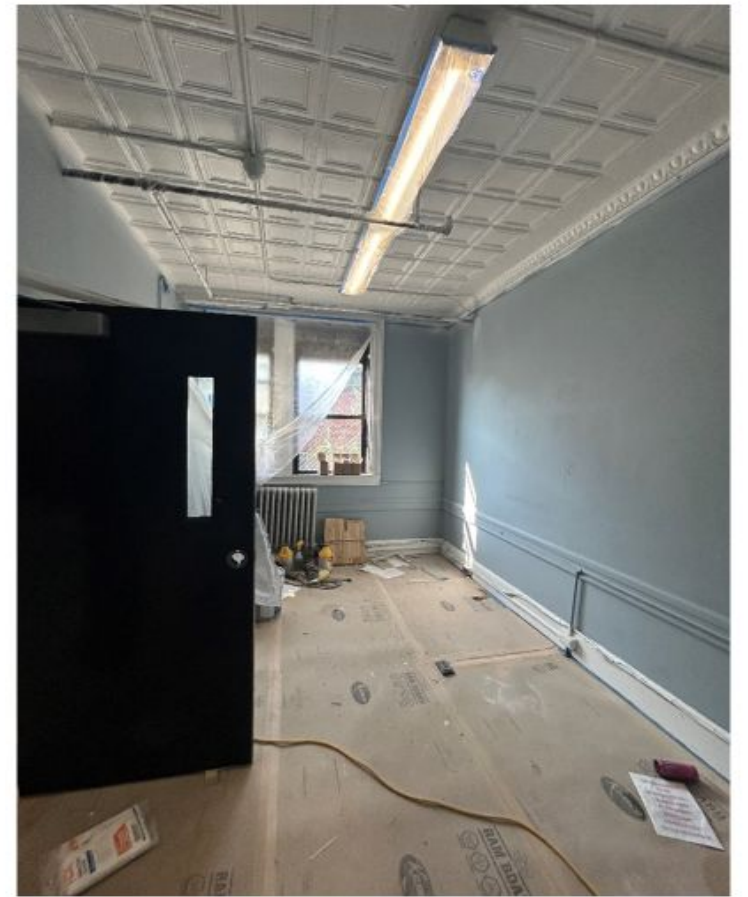
ING SPACE PK-Grade 4



rior Ramp



Gym Wall Pads



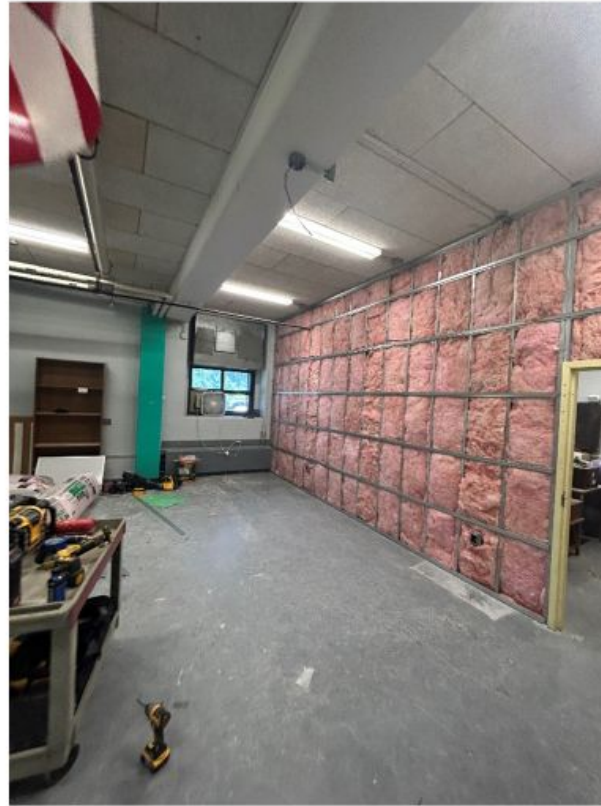
First Floor

RFK AT ESEK HOPKINS

SWING SPACE K-Grade 5



PK Toilets



First Floor Kindergarten



Typical Classroom

Swing Space: Kennedy/Hopkins and Messer/Lauro

Current status

Messer/Lauro

- Third floor - Construction & Painting complete, Whiteboards installed, Deep cleaning complete, Mobile Smartboard installation begin on 7/21
- Second floor - Construction & Painting complete, Whiteboards installed, Deep cleaning underway & Mobile Smartboard installation begin on 7/21
- First floor - Deep cleaning, Whiteboard Installation & Mobile Smartboard installation begin on 7/21
- Classroom furniture delivery & Installation begin on 7/23 starting on the top floor working down to the lower floors

Kennedy/Hopkins

- Third floor - Deep cleaning & Whiteboard installation complete
- Second floor - Deep cleaning & Whiteboard installation complete
- First floor - Deep cleaning & Whiteboard installation begins 7/21
- Basement - Construction wrapping up
- Touch-up painting & window shade installation on all floors begin the week of 7/21
- Classroom furniture delivery & installation begin on 7/28 starting on the top floor working down to the lower floors

Swing Space: Lauro school building

What comes next?

Date	Item	Notes
June 27	Last day for staff & admin in Messer building	
June 30	Removal of network devices from Messer	Done by PPSD IT team
July 1	Third floor of Lauro completed and turned over to ABM for cleaning	
July 7	Messer building vacated; all items removed	
July 18	Lauro renovations substantially complete, and building turned over for cleaning	Minor work to continue throughout ex: install phones, clocks, whiteboards, setup tech
August 5	Lauro tour for families and faculty	
August 7	Staff able to come in building and begin setting up	
August 20	Messer BTS Bash for staff & families!	

Swing Space: Hopkins Building

What comes next?

Date	Item	Notes
June 27th	Last day for staff in RFK building	
August 1st	Hopkins renovations substantially complete, and building turned over for cleaning	
Week of August 12th	Tour of Hopkins building with Kennedy families	Potential for earlier tour based on your feedback
August 12th	Kennedy building vacated; all items removed	Rec center remains open through summer
Week of August 12th	Building open for staff to begin setting up	
August 31	Final visit to Kennedy building with counselor	No access beyond this point

Swing Space

Additional Updates

- **Communication:** Letters mailed to families at Messer and Kennedy reminding them of move to new swing space
- **Transportation:** ParentSquare being sent to families regarding transportation eligibility; bus route/stop to come later in August
- **Lease:** PPSD working with Excel on MOA in event that lease of Excel passes



Updates from Downes Construction

- **Phase two projects**

- Frank Spaziano MS → In construction
- Mary Fogarty PK-8 School → In design
- Harry Kizirian PK-8 School → In design

- **Phase three projects**

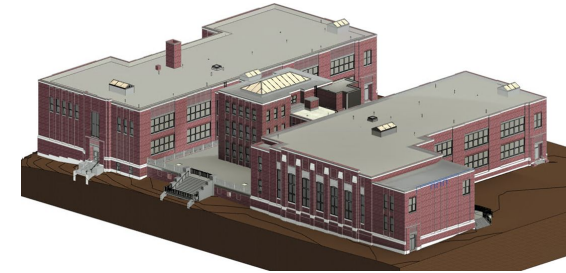
- Mount Pleasant Early College & Career Academy (MPECCA) → In design
- Robert F. Kennedy Pk-8 School → In design
- Lima/Stuart Pk-8 School → In design
- Asa Messer & W. Broadway PK-8 → In design



Project Update

School Name	Project Budget	Student Capacity	Completion Date
D'Abate Elementary School	\$22,000,000	365	Completed
Frank Spaziano Elementary School	\$44,000,000	684	Completed
George West Elementary School	\$525,000	601	Completed
Pleasant View Elementary School	\$22,555,431	418	Completed
Esek Hopkins Middle School	\$450,000	595	Completed
Nathanael Greene Middle School- Phase 1 Completed	\$2,000,000	772	Completed
Classical High School - Phase 1 completed	\$40,278,711	1113	Completed
Hope High School – Phase 1 completed	\$18,000,000	1135	Completed
Narducci Learning Center	\$30,500,000	700	Completed

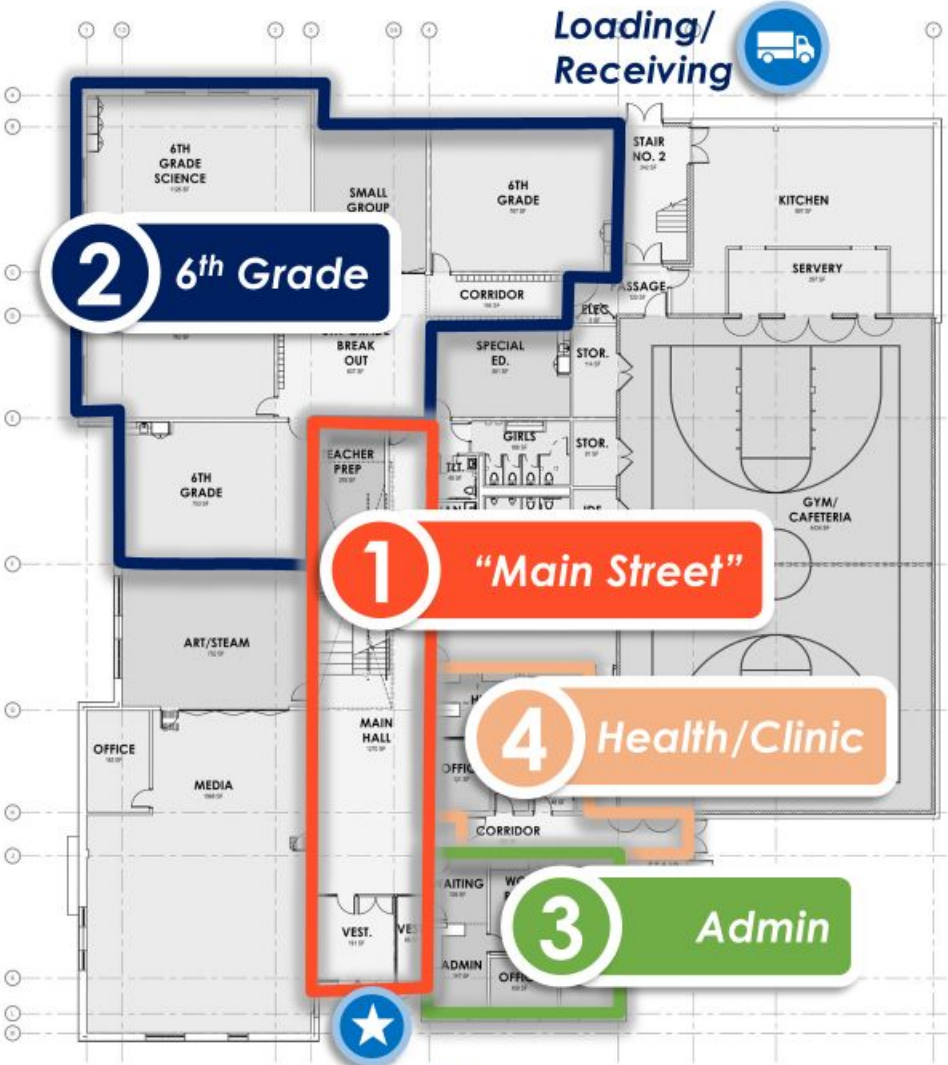
School Name	Student Capacity	Completion Date
Construction		
Frank D Spaziano Middle School	312 (est)	Mid 2026
Design		
Messer/ W Broadway Pk-8 School	972 (est)	Summer 2027 (est)
Lima/Stuart PK-8 School	972 (est)	Summer 2027 (est)
Mt. Pleasant Early Career and College Academy	1000 (est)	Winter 2028 (est)
RFK PK-8 * advanced to phase 3	858 (est)	Summer 2027 (est)
Harry Kizirian PK-8	858 (est)	Summer 2027 (est)
Mary Fogarty PK-8	858 (est)	Summer 2027 (est)



Spaziano 6-8 Middle School

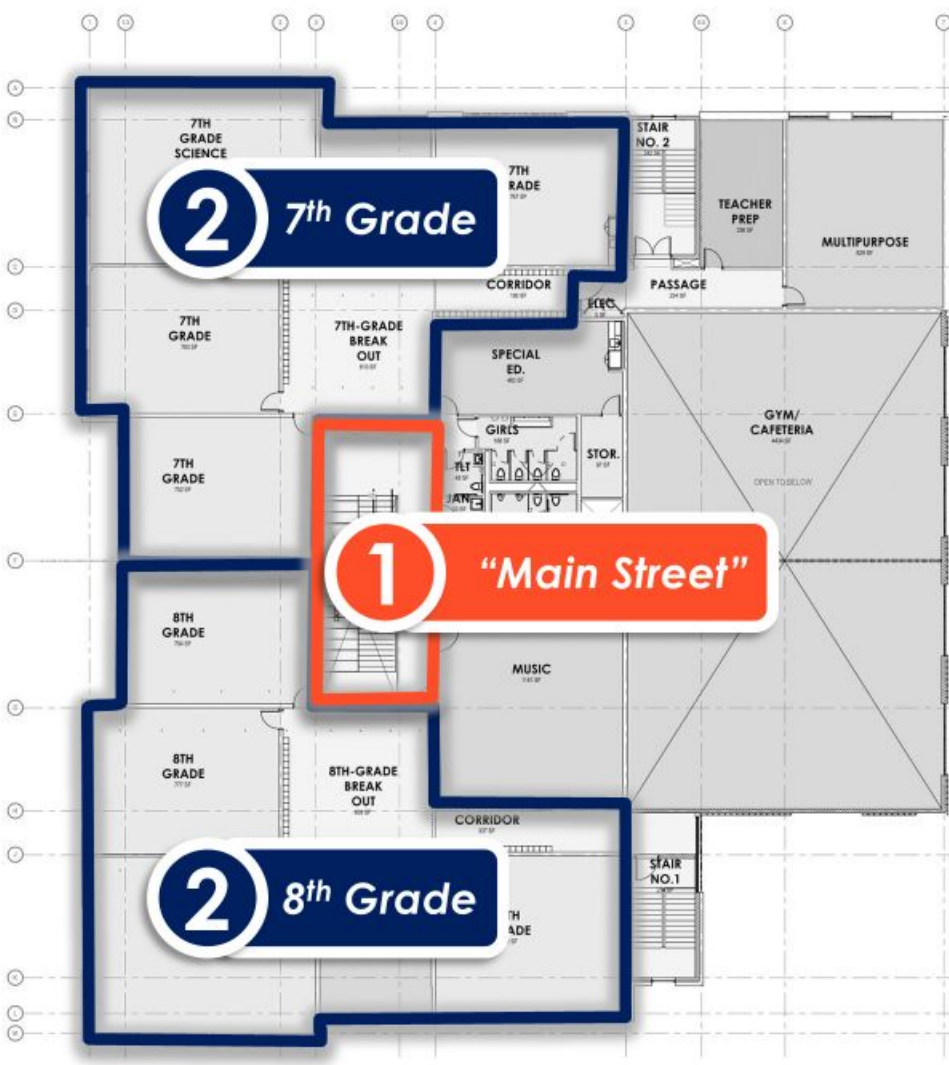


100% CD– Floor Plan Diagrams



Main Level

Main Entry

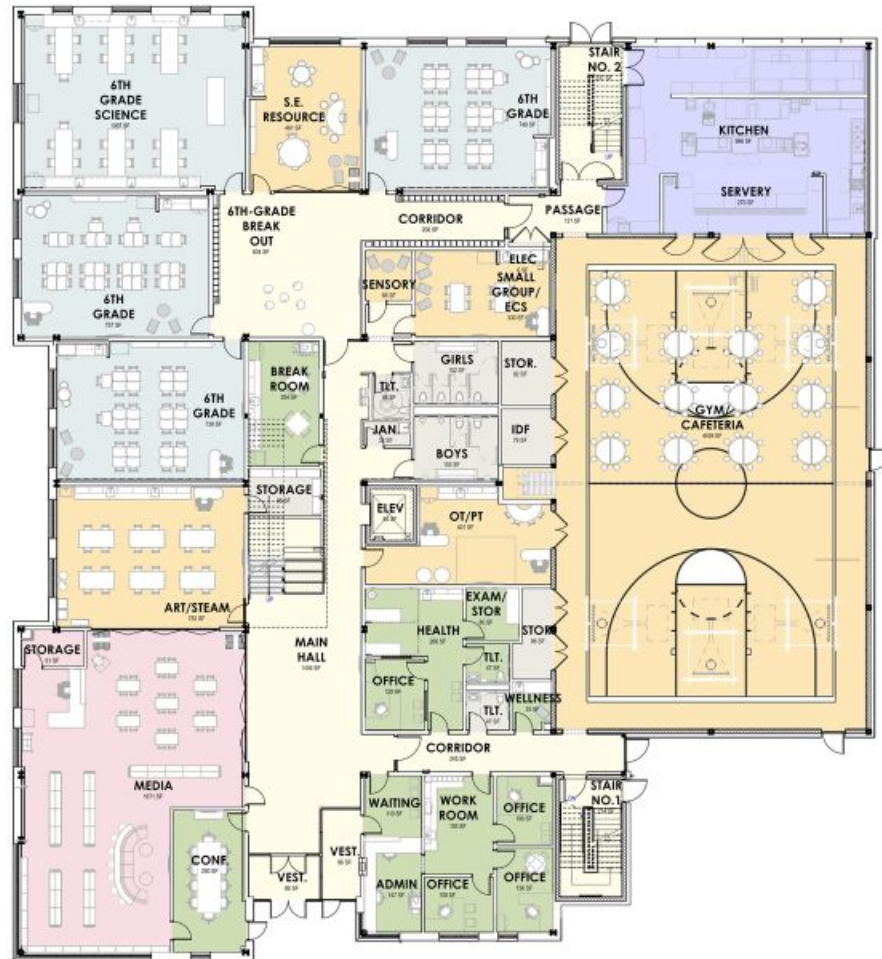


Upper Level

100% CD - FLOOR PLANS

Providence
Schools

Tecton
ARCHITECTS



Main Level



Upper Level

Spaziano 6-8 Middle School

Providence
Schools

Tecton
ARCHITECTS

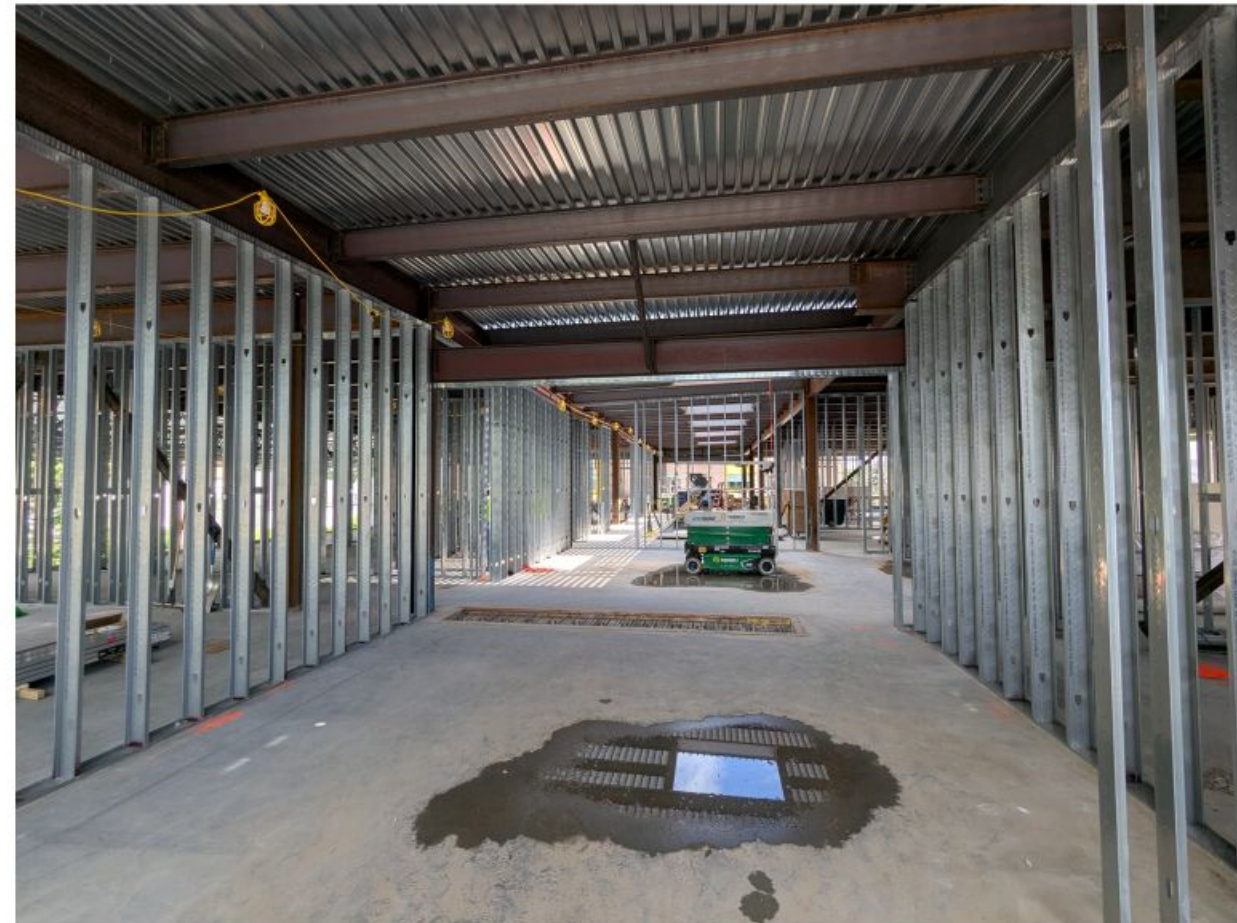


CONSTRUCTION PROGRESS



Exterior framing and sheathing underway

Interior framing ongoing



CONSTRUCTION PROGRESS

Providence
Schools

Tecton
ARCHITECTS



Slab on grade poured – view of Gym/Cafeteria

View of Main Hall



Mary E. Fogarty School PK-8

Project Summary

- PK-5 Three Track
6-8 Four Track
- Approximately
120,000 SF



Project Summary

- Project Completion
2027
- Status: Conceptual
Design
- PPSD, SBC, City of
Providence Reviews



Providence
Schools



RIDE

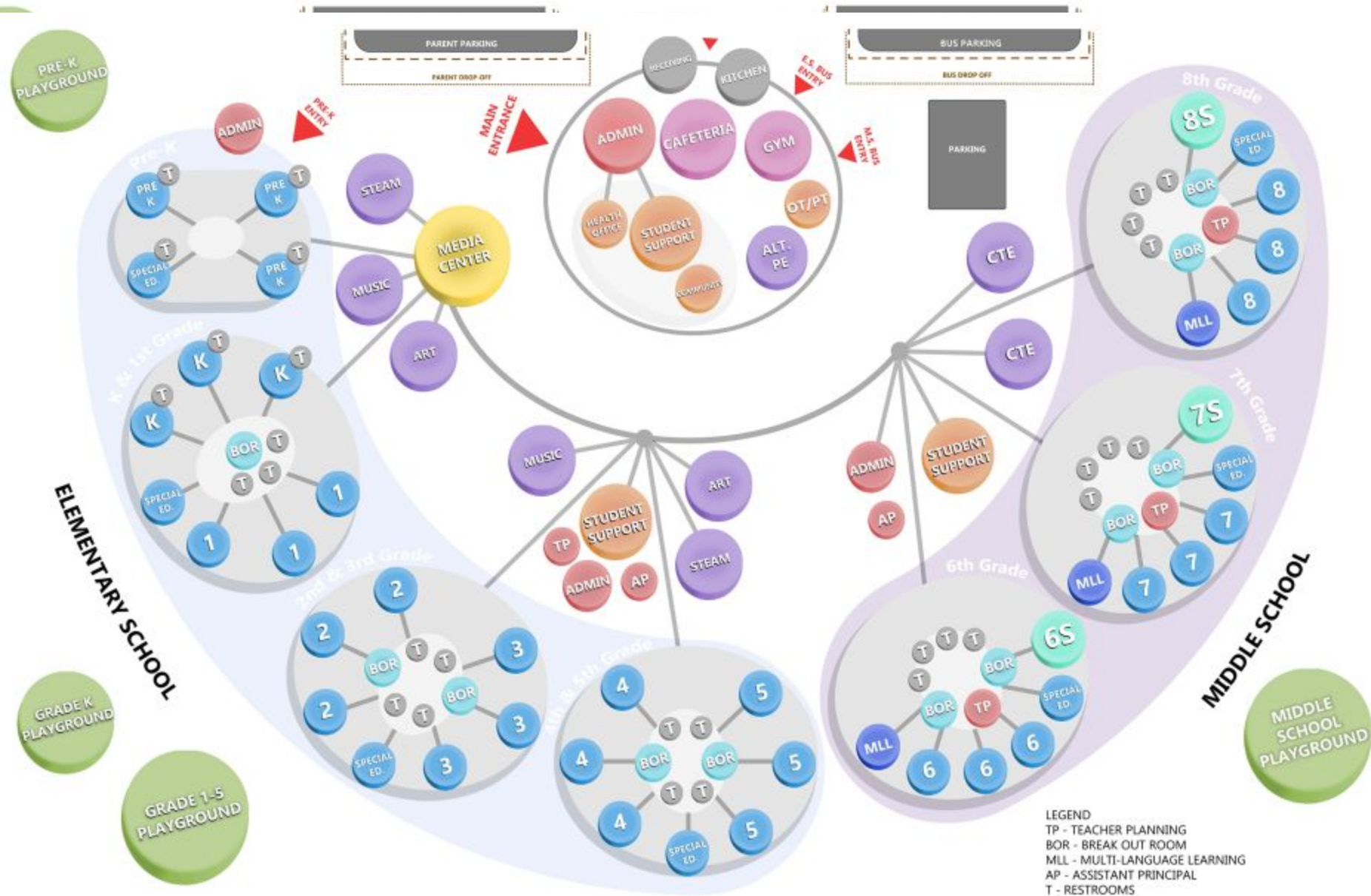
Rhode Island
Department
of Education

MARY E. FOGARTY ELEMENTARY SCHOOL
PRE K - GRADE 5 | 3 TRACK
GRADE 6 - GRADE 8 | 4 TRACK



DOWNES
CONSTRUCTION COMPANY





Providence
Schools



RIDE

Rhode Island
Department
of Education

MARY E. FOGARTY ELEMENTARY SCHOOL
PRE K - GRADE 5 | 3 TRACK
GRADE 6 - GRADE 8 | 4 TRACK



FIRST FLOOR
- 39,732 sf (gross)
- 34,603 sf (net)
SQUARE FOOTAGE BREAKDOWN
- Classrooms - 10,996 sf
- Science Lab - 0 sf
- Specialties - 4,623 sf
- Administration - 2,984 sf
- Student Support - 2,194 sf
- Health Suite - 1,291 sf
- Cafeteria - 6,876 sf
- Gymnasium - 5,362 sf
- Custodial / Maintenance - 467 sf
- Common Areas (Media Center) - 4,739 sf

TOTAL
PPSD School Design Standard
- 123,339 sf (gross)
- 88,100 sf (net)
Current Design
- 122,117 sf (gross)
- 86,805 sf (net)
Delta (Current design vs. PPSD Standard)
- -1,222 sf (gross)
- -1,245 sf (net)
SQUARE FOOTAGE BREAKDOWN
- Classrooms - 39,963 sf
- Science Lab - 3,188 sf
- Specialties - 11,358 sf
- Administration - 7,387 sf
- Student Support - 3,188 sf
- Health Suite - 1,291 sf
- Cafeteria - 6,876 sf
- Gymnasium - 5,362 sf
- Custodial / Maintenance - 1,253 sf
- Common Area (M.C.) - 4,739 sf

FIRST FLOOR



LEGEND

SCIENCE LABS

CLASSROOMS

BREAK-OUT ROOMS

CAFETERIA

MEDIA CENTER

ADMINISTRATION

ART / STEAM / CTE / STAGE

STUDENT SUPPORT / HEALTH OFFICE

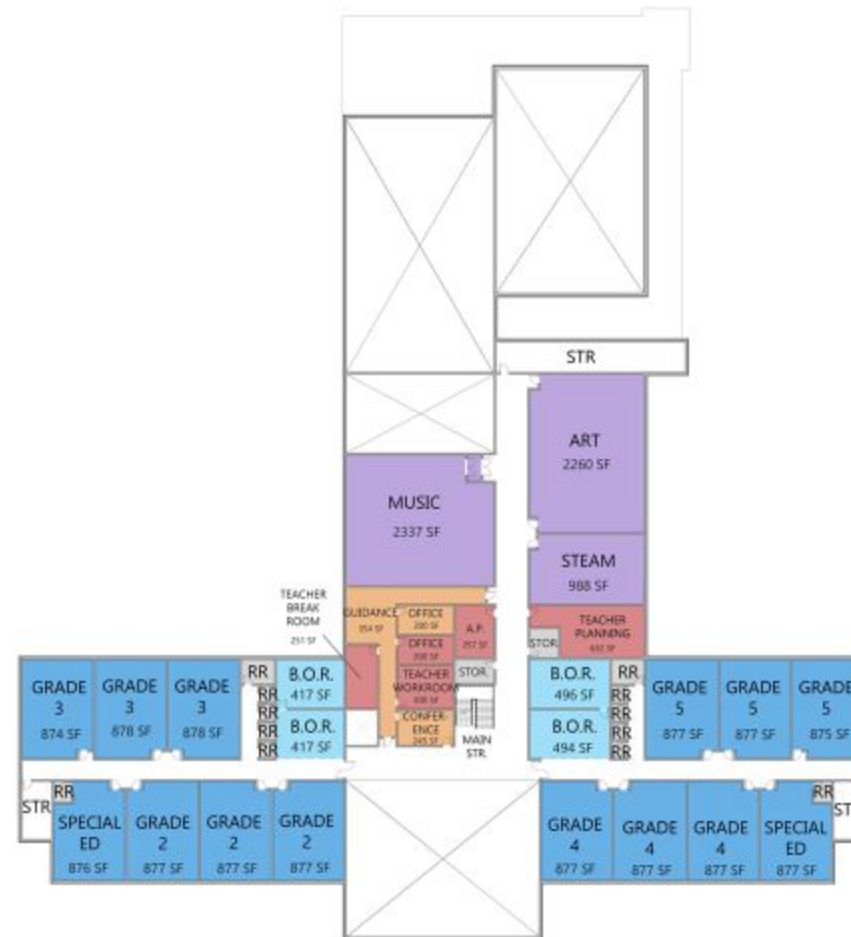
PLAYGROUND

SERVICE

GYMNASIUM

SECOND FLOOR
<ul style="list-style-type: none"> - 31,719 sf (gross) - 22,431 sf (net)
SQUARE FOOTAGE BREAKDOWN
<ul style="list-style-type: none"> - Classrooms - 14,147 sf - Science Lab - 988 sf - Specialties - 4,597 sf - Administration - 1,673 sf - Student Support - 799 sf - Health Suite - 0 sf - Cafeteria - 0 sf - Gymnasium - 0 sf - Custodial / Maintenance - 223 sf - Common Area - 0 sf

TOTAL
PPSD School Design Standard - 123,339 sf (gross) - 88,100 sf (net)
Current Design - 122,117 sf (gross) - 86,805 sf (net)
Delta (Current design vs. PPSD Standard) - -1,222 sf (gross) - -1,245 sf (net)
SQUARE FOOTAGE BREAKDOWN
<ul style="list-style-type: none"> - Classrooms - 39,963 sf - Science Lab - 3,188 sf - Specialties - 11,358 sf - Administration - 7,387 sf - Student Support - 3,188 sf - Health Suite - 1,291 sf - Cafeteria - 6,876 sf - Gymnasium - 5,362 sf - Custodial / Maintenance - 1,253 sf - Common Area (M.C.) - 4,739 sf



LEGEND

SCIENCE LABS
CLASSROOMS
BREAK-OUT ROOMS
CAFETERIA
MEDIA CENTER
ADMINISTRATION
ART / STEAM / CTE / STAGE
STUDENT SUPPORT / HEALTH OFFICE
PLAYGROUND
SERVICE
GYMNASIUM

SECOND FLOOR

THIRD FLOOR

- 35,793 sf (gross)
- 24,642 sf (net)

SQUARE FOOTAGE BREAKDOWN

- Classrooms - 14,820 sf
- Science Lab - 4,200 sf
- Specialties - 2,138 sf
- Administration - 2,728 sf
- Student Support - 193 sf
- Health Suite - 0 sf
- Cafeteria - 0 sf
- Gymnasium - 0 sf
- Custodial / Maintenance - 361 sf
- Common Area - 0 sf

TOTAL

- PPSD School Design Standard
- 123,339 sf (gross)
- 88,100 sf (net)

- Current Design
- 122,117 sf (gross)
- 86,805 sf (net)

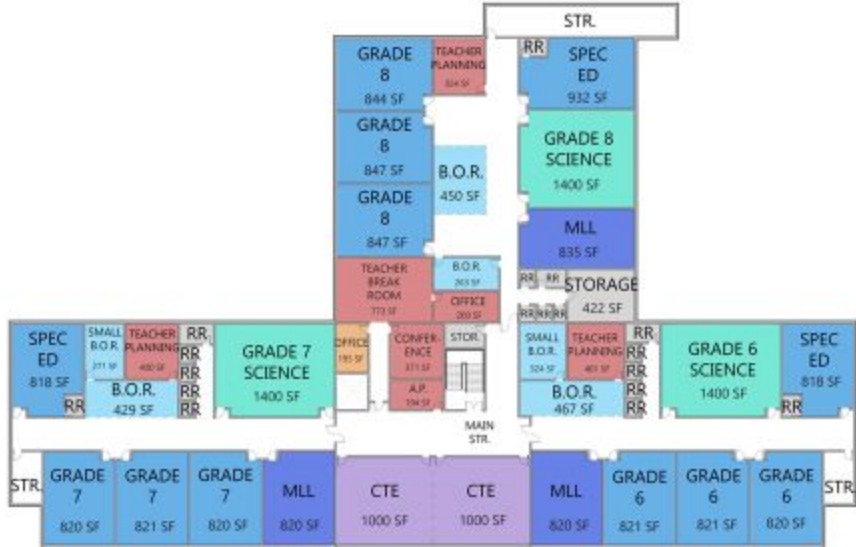
- Delta (Current design vs. PPST Standard)
- -1,222 sf (gross)
- -1,245 sf (net)

SQUARE FOOTAGE BREAKDOWN

- Classrooms - 39,963 sf
- Science Lab - 3,188 sf
- Specialties - 11,358 sf
- Administration - 7,387 sf
- Student Support - 3,188 sf
- Health Suite - 1,291 sf
- Cafeteria - 6,876 sf
- Gymnasium - 5,362 sf
- Custodial / Maintenance - 1,253 sf
- Common Area (M.C.) - 4,739 sf

LEGEND

- SCIENCE LABS
- CLASSROOMS
- BREAK-OUT ROOMS
- CAFETERIA
- MEDIA CENTER
- ADMINISTRATION
- ART / STEAM / CTE / STAGE
- STUDENT SUPPORT / HEALTH OFFICE
- PLAYGROUND
- SERVICE
- GYMNASIUM



THIRD FLOOR



Providence
Schools



RIDE

Rhode Island
Department
of Education

MARY E. FOGARTY ELEMENTARY SCHOOL
PRE K - GRADE 5 | 3 TRACK
GRADE 6 - GRADE 8 | 4 TRACK



Gilbane

TORRADO
ARCHITECTS



Harry Kizirian School

PK-Grade 5 | 3 Track
Grades 6-8 | 4 Track



Providence
Schools



Harry Kizirian School

PK-Grade 5 | 3 Track
Grades 6-8 | 4 Track



Providence
Schools



Harry Kizirian School

PK-Grade 5 | 3 Track
Grades 6-8 | 4 Track



Providence
Schools



DOWNES
CONSTRUCTION



STUDIO
JAED



DIMEO

Harry Kizirian School

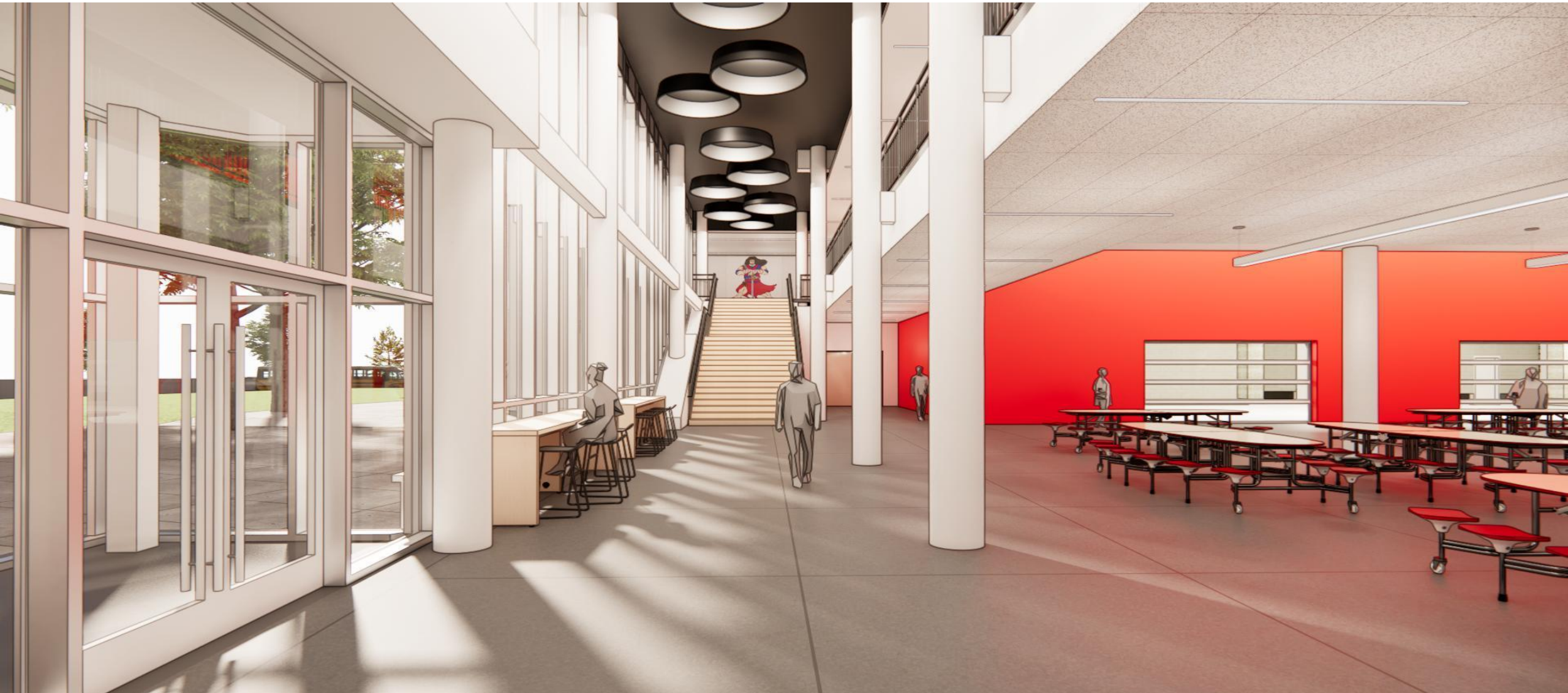
PK-Grade 5 | 3 Track
Grades 6-8 | 4 Track



Providence
Schools

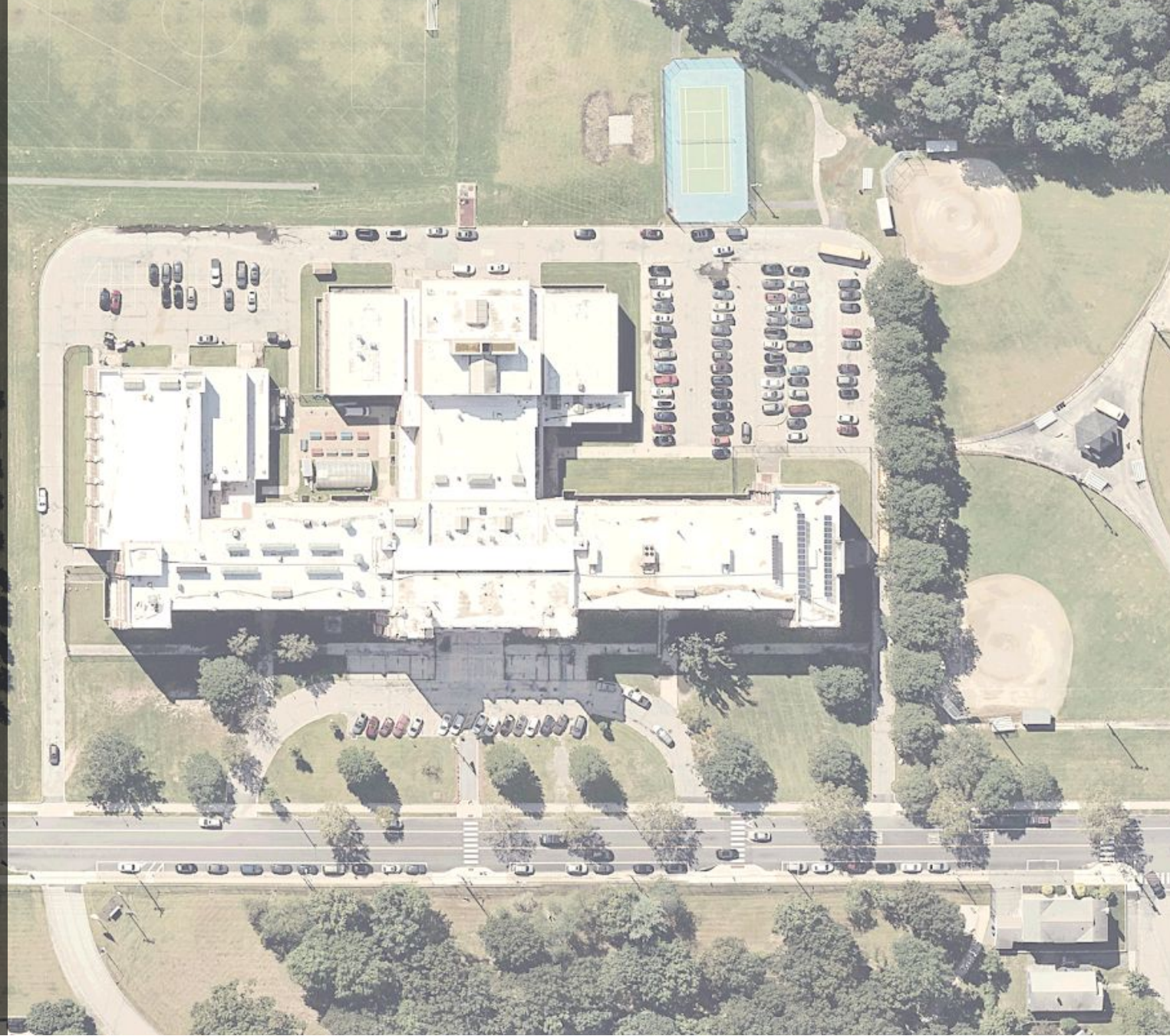


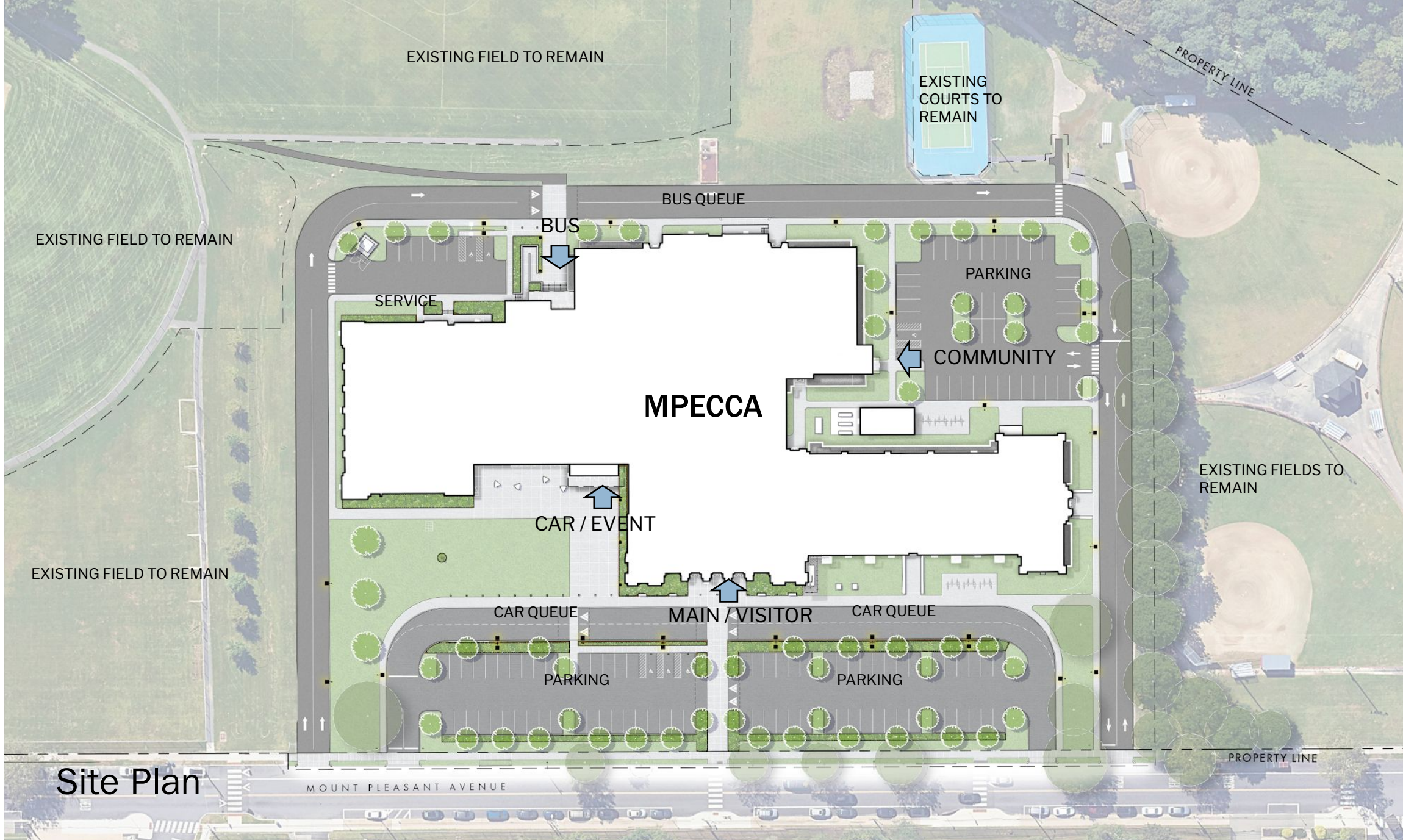
Mount Pleasant Early College and Career Academy



Project Overview

- \$110M Budget
- 224,500 GSF +/- (Approx)
- 1,000 Student Enrollment
- Project Completion 2027/2028 School Year
- Occupied School / Phased Construction







Commons View 2



MOUNT PLEASANT AVE

Exterior View 1



MOUNT PLEASANT AVE

Exterior View 2



Exterior View 3



Exterior View 4



Exterior View 5



Exterior View 6

Furniture Showcase



Furniture Showcase



Alternate Items for MPECCA

Eliminate site light bollards - Add pedestrian lighting off Building	-\$14,500
Eliminate New Auditorium Chairs, aisle carpet and epoxy painted floors	-\$332,130
Eliminate Stage Equipment and Lighting (Keep Fire Curtain)	-\$550,000
Eliminate Replacement of Stage Flooring	-\$77,532
Eliminate Removal of Contaminated Soils @ Crawl Spaces - Cover w/ poly	-\$18,800
Eliminate Lockers Entirely	-\$402,000
Eliminate Gym Acoustical Wall Panels	-\$68,000
Eliminate Auditorium Acoustical Wall Panels	-\$72,000
Infill Basement Windows, & Patch Visible Walls	Value TBD
Utilize Corridor Ceilings for Return Air Plenum	Value TBD
CURRENT TOTAL:	-\$1,534,962

UPCOMING MILESTONES

- Swing Space estimated start Summer 2025
- Swing Space Approved
- Movers started on 7/7
- Swing Space Construction starts in August
- Schematic Design documents are finalized
- Furniture Showcase scheduled for 7/16
- Public Forum to be scheduled
- End User Meetings occurred
- Design Development documents in process

ROBERT F KENNEDY PK-8 ELEMENTARY SCHOOL



RIDE Rhode Island
Department
of Education



Providence
Schools



DOWNES CONSTRUCTION COMPANY
Building Excellence Since 1934



Tecton
ARCHITECTS



ROBERT F KENNEDY PK-8 ELEMENTARY SCHOOL



RIDE
Rhode Island
Department
of Education



Providence
Schools

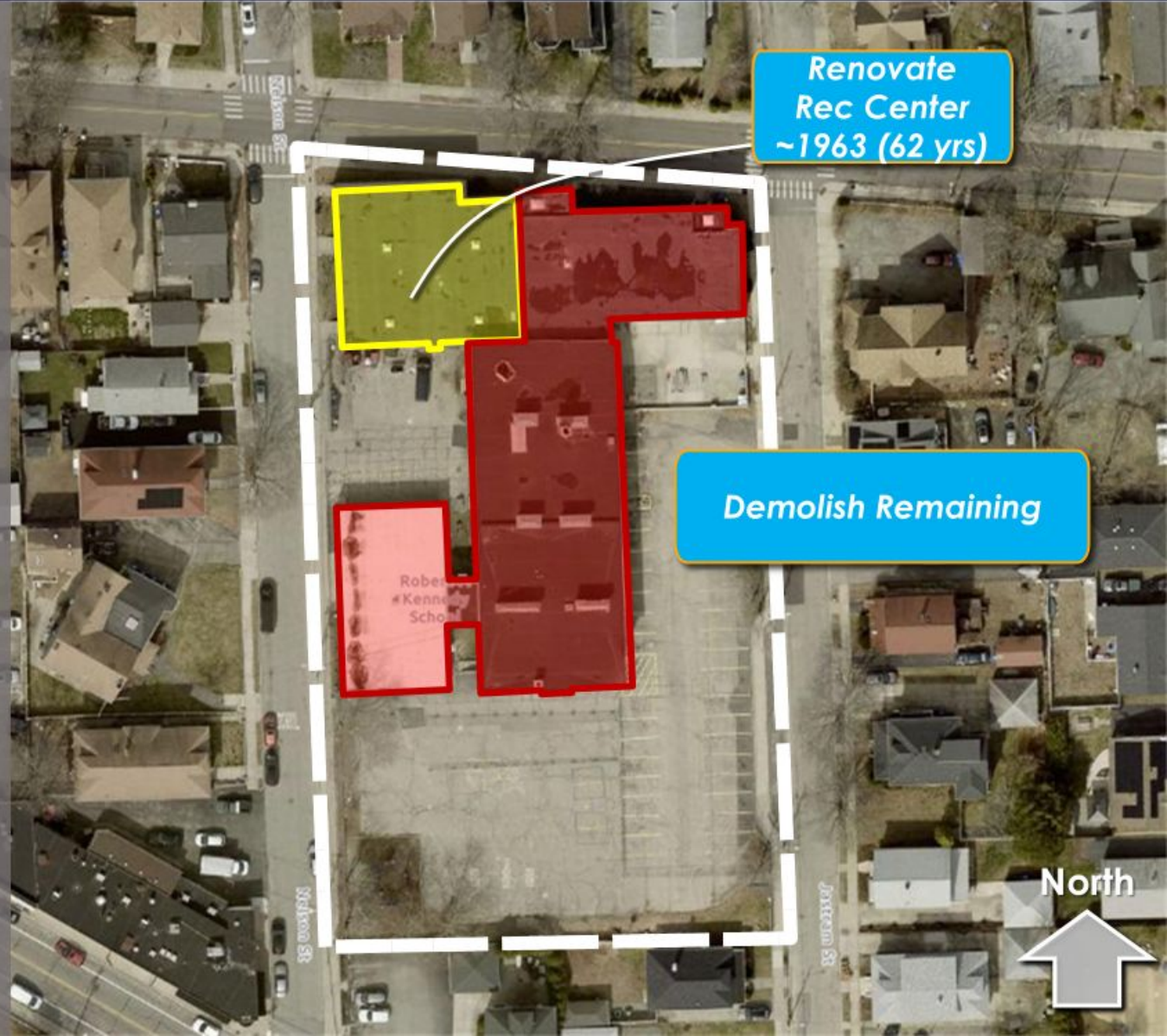
DOWNES CONSTRUCTION COMPANY
Building Excellence Since 1934



Tecton
ARCHITECTS

NEW PK-8

- 3-Track Elementary School
- 4-Track Middle School
- 858 Students
- 4 Stories
- \$75,146,684 Total Project Cost
- Occupancy for 2027/28 Year



ROBERT F KENNEDY PK-8 ELEMENTARY SCHOOL



RIDE
Rhode Island
Department
of Education



Providence
Schools

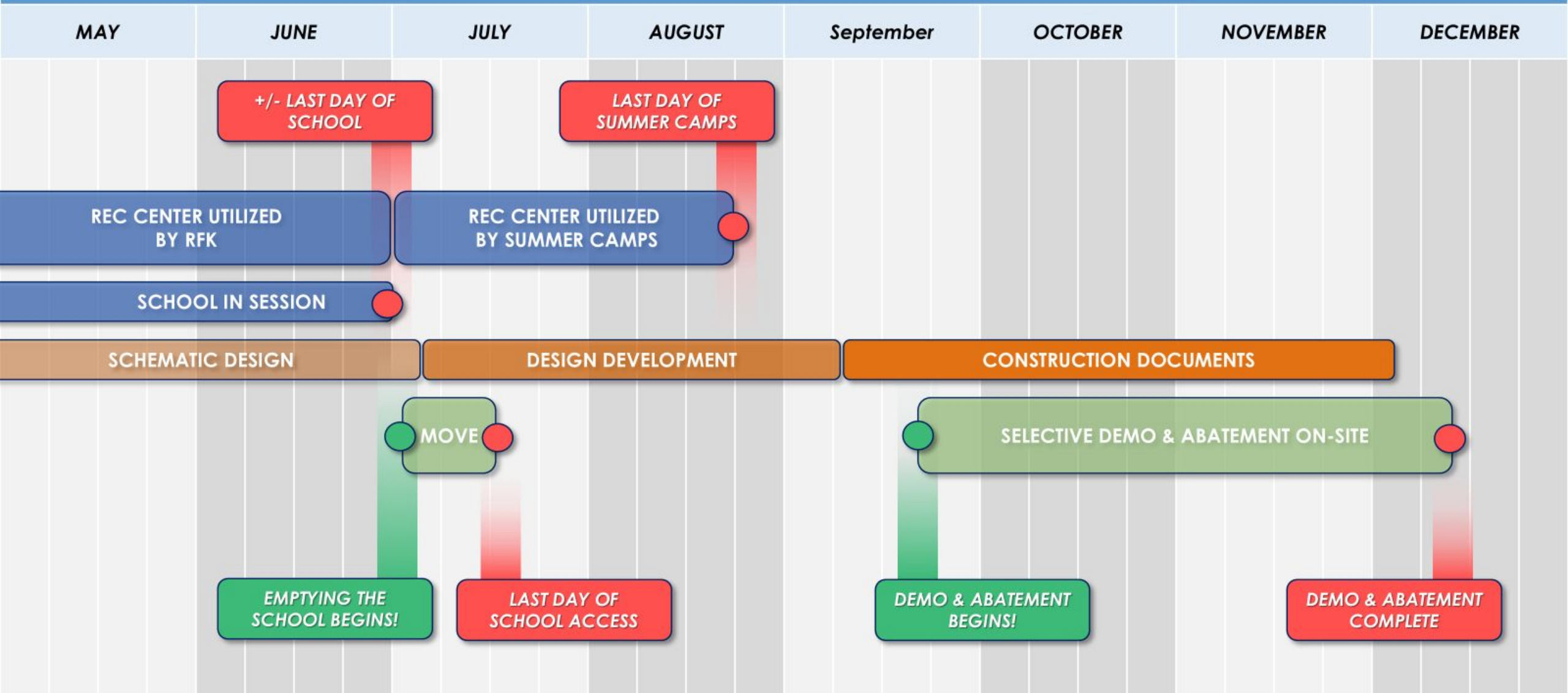


DOWNES CONSTRUCTION COMPANY
Building Excellence Since 1934



Tecton
ARCHITECTS

2025



ROBERT F KENNEDY PK-8 ELEMENTARY SCHOOL



RIDE
Rhode Island
Department
of Education

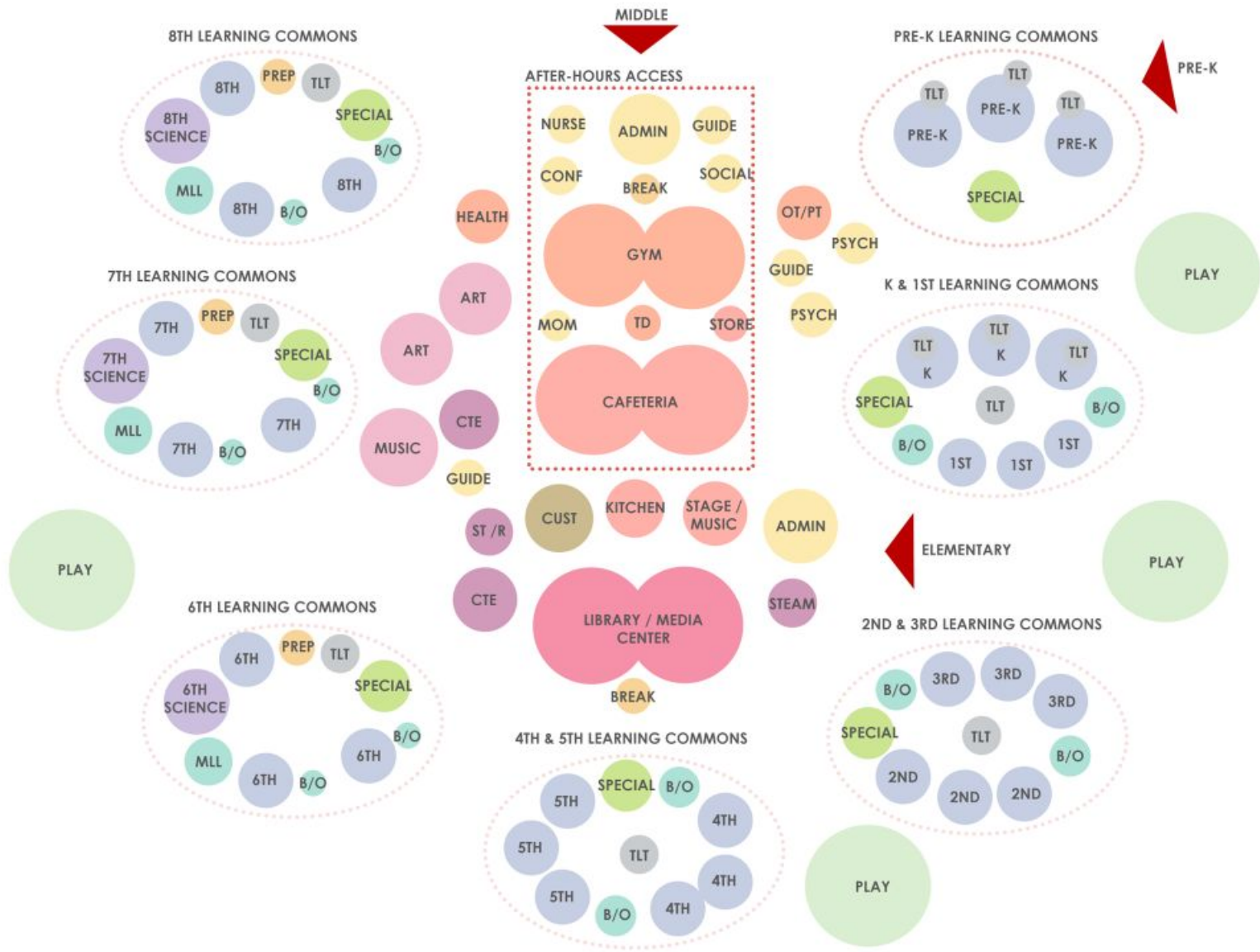


Providence
Schools

DOWNES CONSTRUCTION COMPANY
Building Excellence Since 1934



Tecton
ARCHITECTS



ROBERT F KENNEDY PK-8 ELEMENTARY SCHOOL



RIDE
Rhode Island
Department of
Education



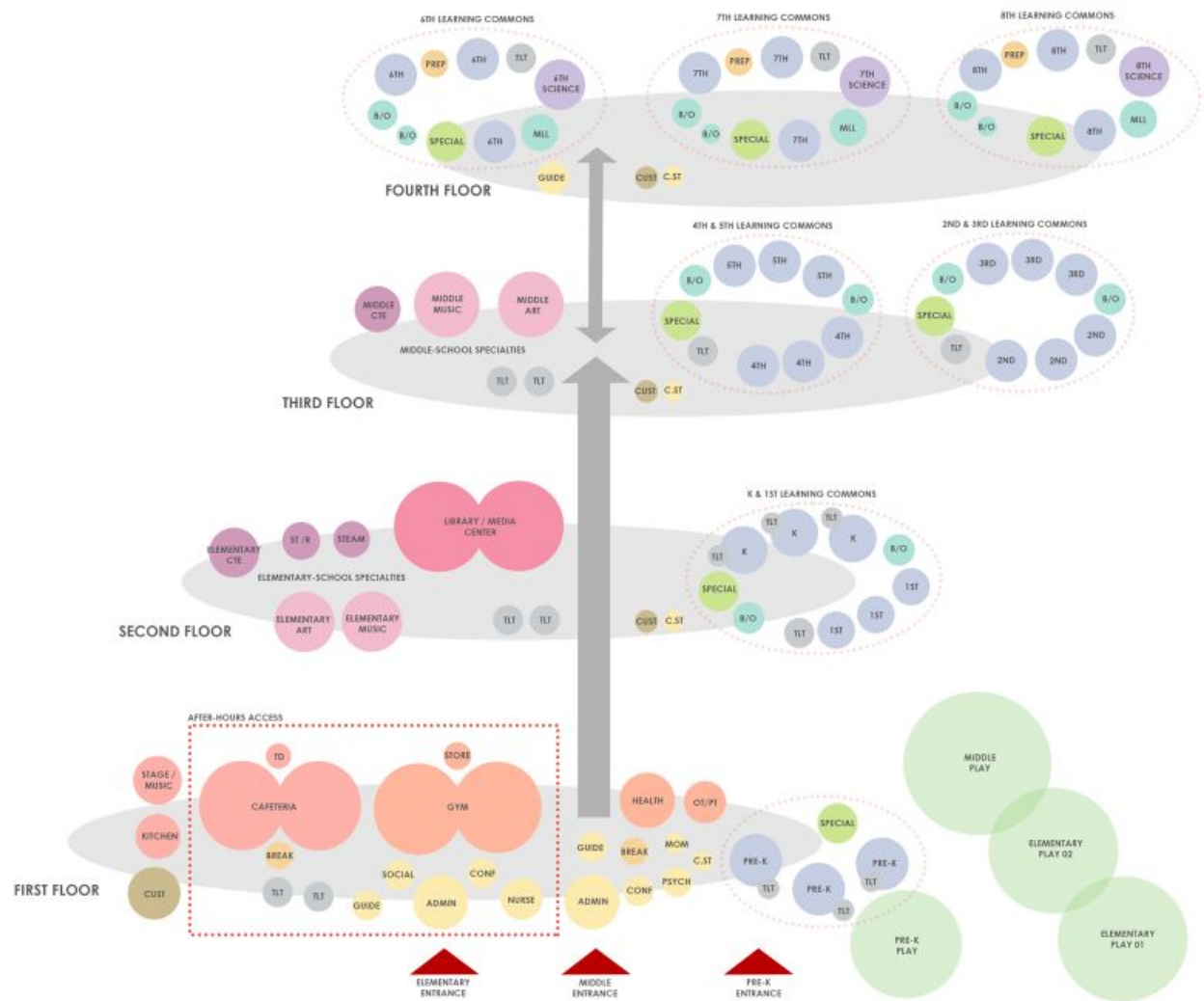
Providence
Schools



DOWNES CONSTRUCTION COMPANY
Building Excellence Since 1934



Tecton
ARCHITECTS





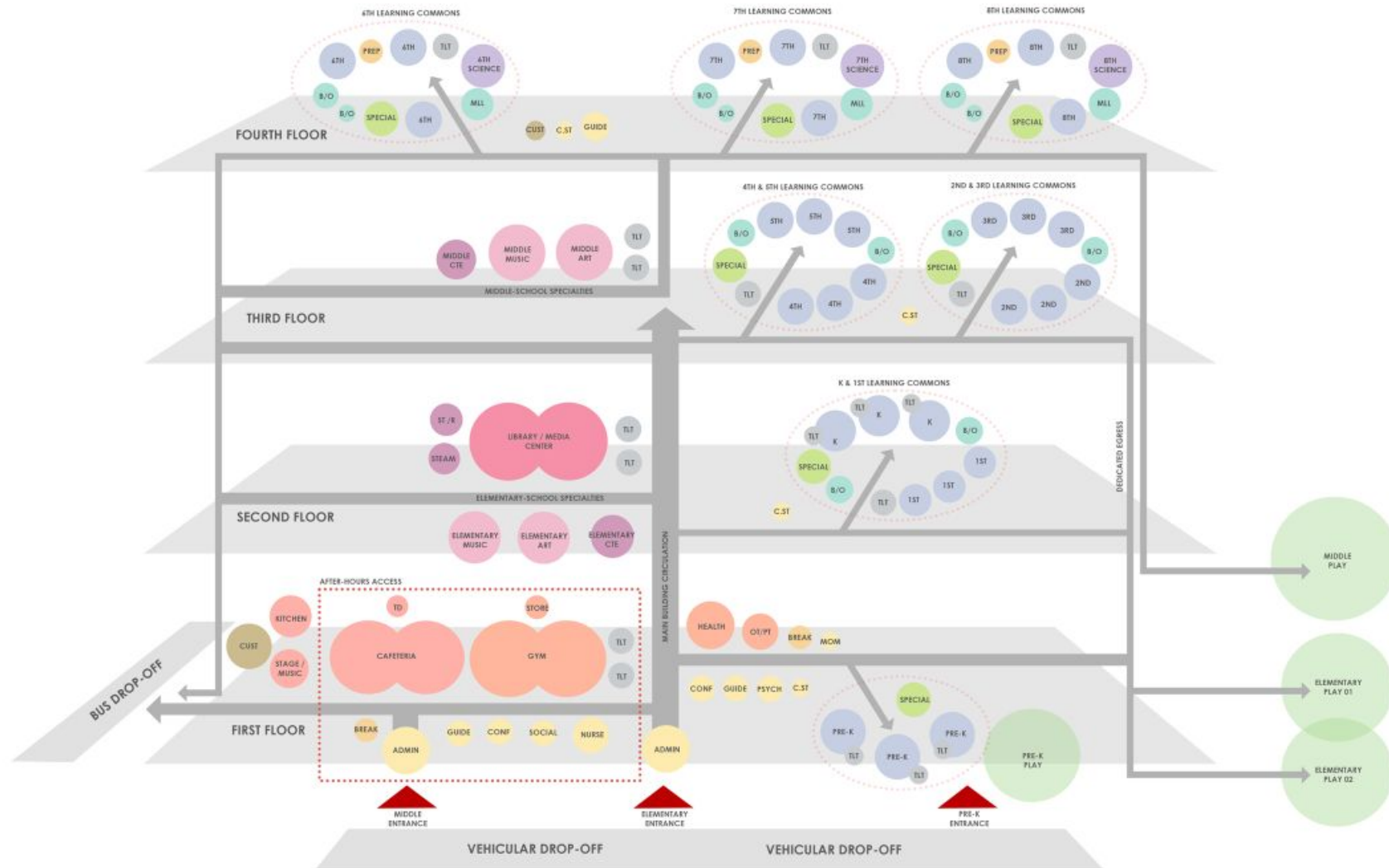
RIDE Rhode Island
Department
of Education

Providence
Schools

DOWNES CONSTRUCTION COMPANY
Building Excellence Since 1934



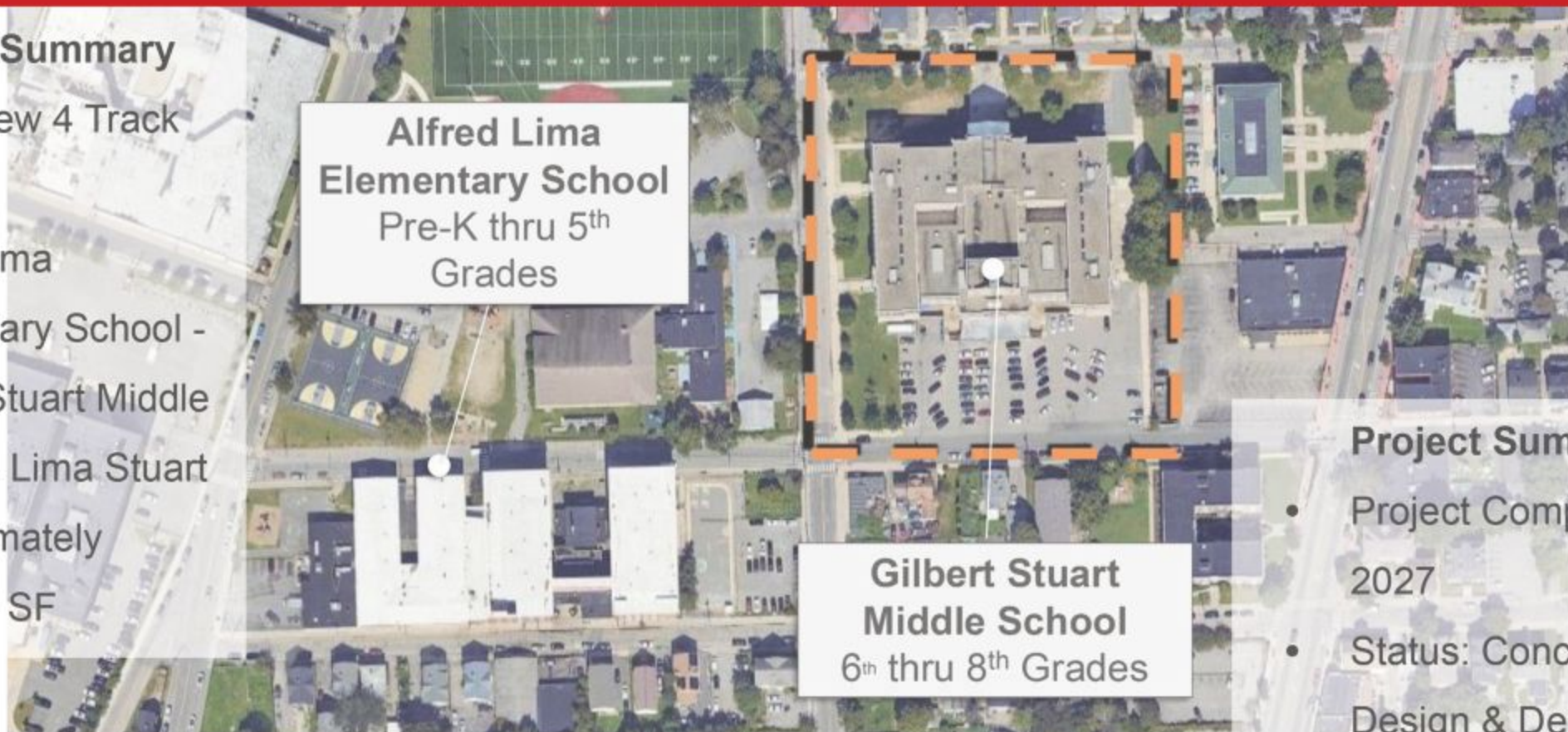
Tecton
ARCHITECTS



Lima Stuart School PK-8

Project Summary

- PK- 8 New 4 Track School
- Alfred Lima Elementary School - Gilbert Stuart Middle School - Lima Stuart
- Approximately 136,000 SF



Project Summary

- Project Completion 2027
- Status: Conceptual Design & Demo Plans
- PPSD, SBC, City of Providence Reviews



Lima/Stuart plan

Project overview

- Approved by City Council and School Building Authority as an investment as part of district's capital plan
- **New build** on site of former Stuart school, adding Pre-K and Grades 6 - 8

Programmatic goals

- Create a **PK-8 school community**, a research-based approach for improving student achievement
- Expand PPSD's **dual language program**, a successful district program for supporting multilingual learners



Project's programmatic needs have implications for school design

Facilities Needs Based on Program

- **Pre-K:** include purpose-built spaces for Pre-Kindergarten with larger classrooms, in-classroom bathrooms, and separate playspaces
- **PK-8 community:** separate entrances, stairwells etc. for youngest and oldest learners; intentional building design to ensure grades only interact in planned areas
- **Dual language:** create paired classrooms with connecting spaces to support dual language team teaching model

Facilities analysis

As required by RIDE (Rhode Island Department of Education), every school project must go through a formal process. During the “Stage II” phase, a detailed feasibility analysis was conducted to compare renovation vs. new construction. The analysis looked at:

- Space needs and layout for a PK–8 dual language program
- 20-year life cycle cost
- Structural condition of the existing building
- Compliance with building and fire codes
- Accessibility (ADA compliance)
- Internal circulation and separation of grade levels
- Broader school district needs

The results showed that the existing building could not support the required educational program or meet critical building and safety codes. That included important things like:

- Fire and egress codes for Pre-K students.
- Addition of new classrooms to meet Pre-K needs isn't practical due to the steep grade and layout of the site.
- Layout of entrances, stairwells, common spaces, and circulation not conducive to supporting PK-8 community
- Classroom/floor layout designed for educational model from 95+ years ago vs. dual language programming

Given these challenges, a renovation would not enable the school to meet the district’s programmatic needs, and a new building is the best path for meeting programmatic needs in a safe and accessible facility

Existing classrooms vs newly 21st century classrooms

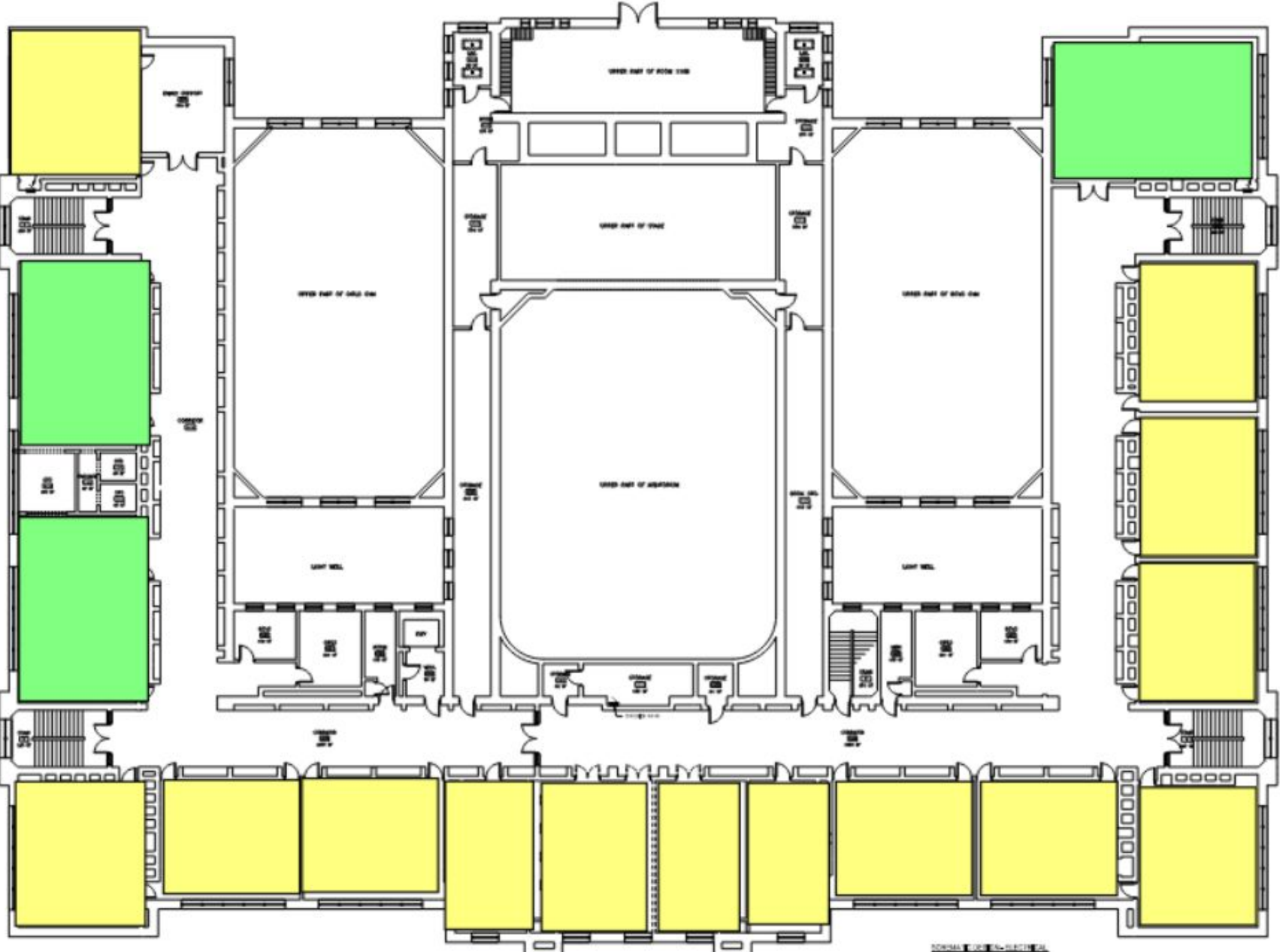


***Current Gilbert Stuart Middle
classroom***



Connecting classrooms for dual language learners. Flexible furniture & brighter learning environment.

Existing floor plan from Gilbert Stuart MS



Number of classrooms	PPSD min Sq ft per room	RIDE's Sq ft for classrooms
17	850 sq ft	950 sq ft

Only 3 out of the 17 classrooms, meet the educational program needs in terms of sq footage.

5 out of the 17 classrooms are long and narrow

How and when was the decision made regarding the plan to build new and demolish the old building at the site of Gilbert Stuart?

The recommendation for a new build on the site of Gilbert Stuart was made during the Stage II construction submission on September 15, 2023. It has been consistently communicated during engagement sessions with the community, families, faculty, and other public meetings such as the School Building Committee. Select slides from various meetings are below:

New Construction Pre K – 8th School at Gilbert Stuart Site *Dual Language*



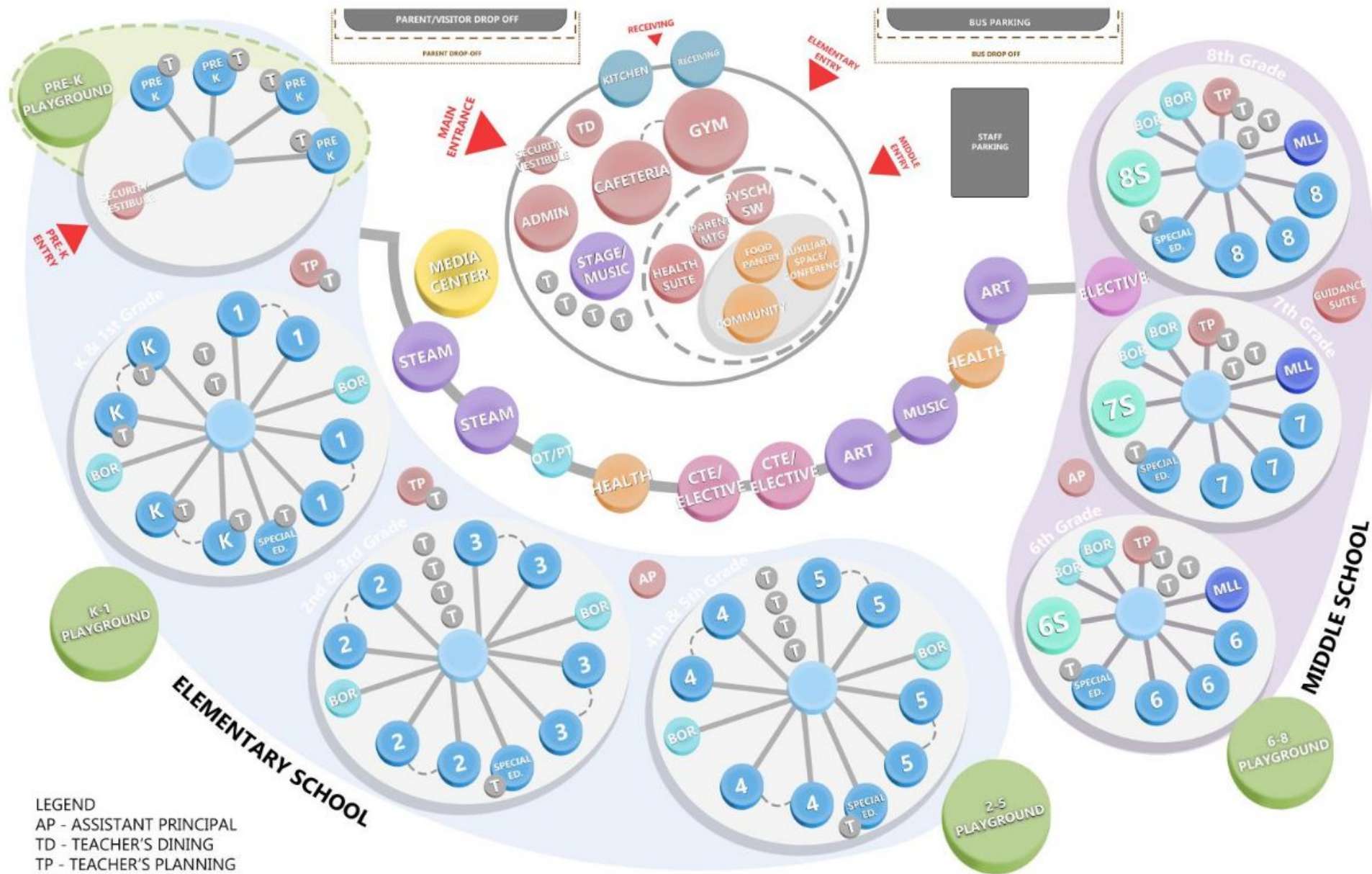
New Construction Pre K – 8th Grade School
at Gilbert Stuart Site

Lima School: Timeline & Design Decisions

- Construction to occur on site of Gilbert Stuart, estimated to take 2 school years
- Once construction complete, students would relocate from current school site to new site at Gilbert Stuart



- District and school academic team to work with school community on program design
- Design firm to work with school community and district on project scope and building design



LEGEND
 AP - ASSISTANT PRINCIPAL
 TD - TEACHER'S DINING
 TP - TEACHER'S PLANNING
 BOR - BREAK OUT ROOM

RENOVATIONS FOR:

Lima Stuart
Elementary
School

SCHEMATIC DESIGN

[illegible]

First Floor Plan

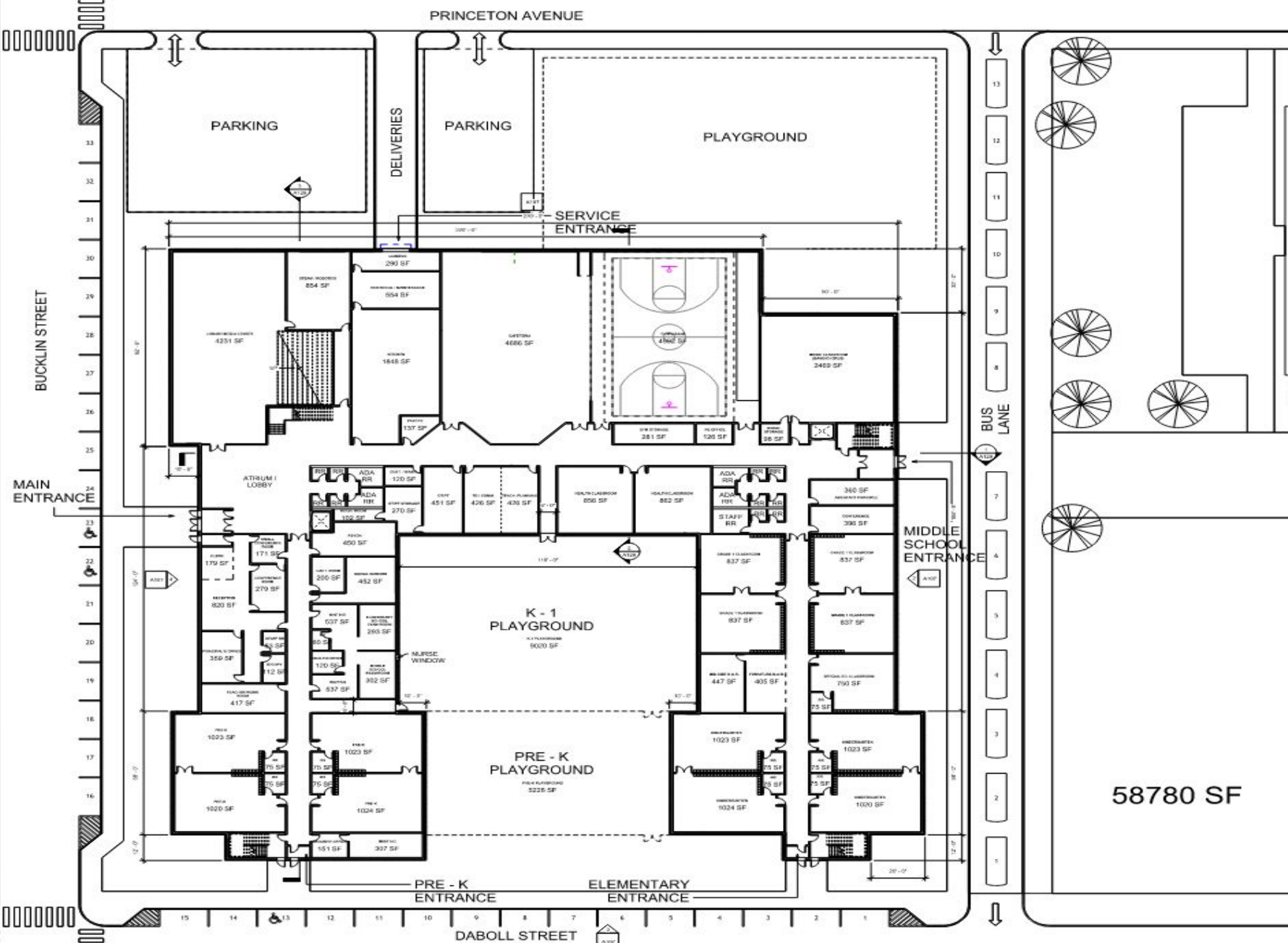
58780 SF

DATE	REV. #	DESCRIPTION
------	--------	-------------

REVISIONS:	
DATE:	4/24/2025
DRAWN:	AJL/BJ
SCALE:	AS NOTED
CHECKED BY:	Checker

A104

1000000





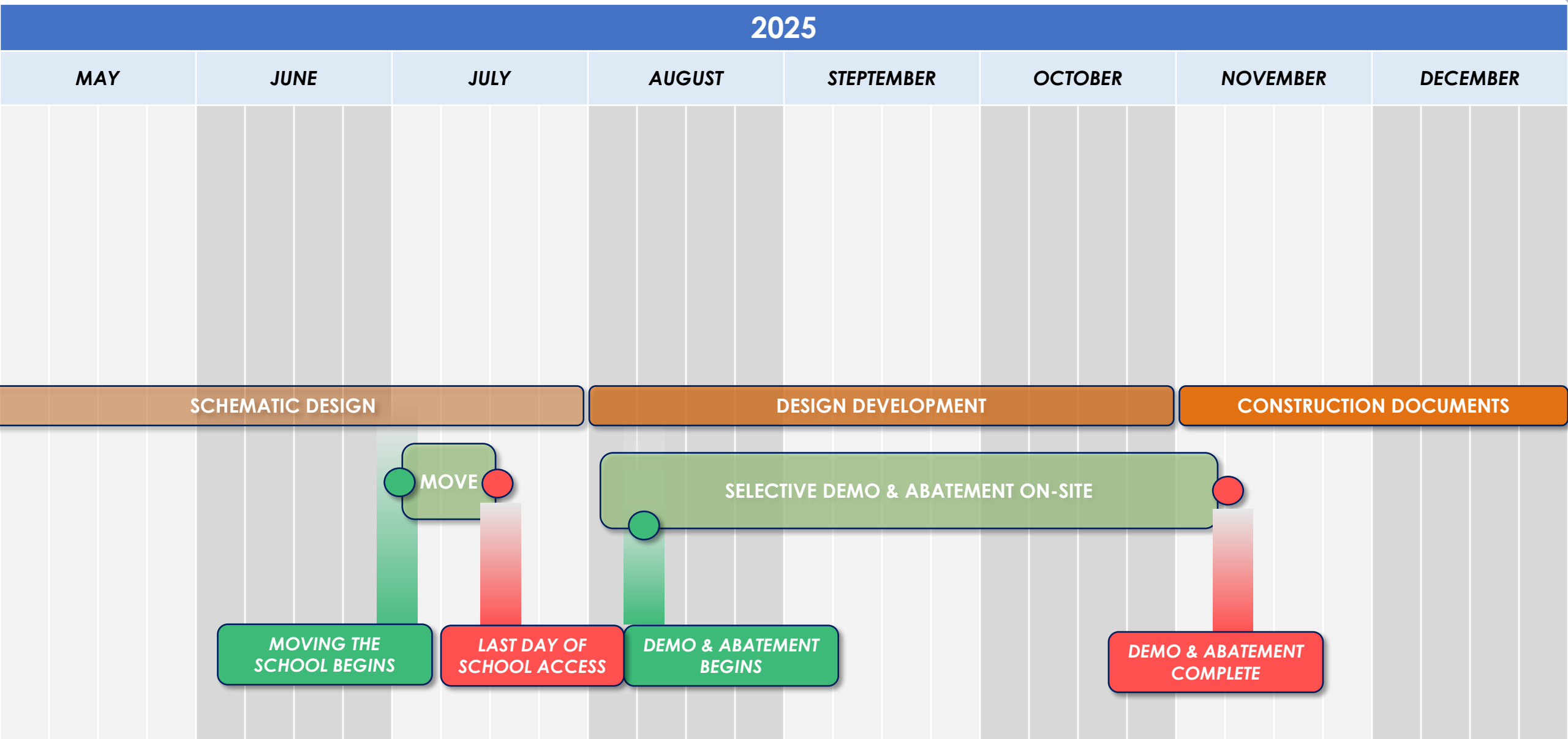
⑦ Second Floor Plan
1150' = 1'-0"

[illegible]



Reimagining Messer & West Broadway's school building

Timeline through December 2025



New PK-8 Asa Messer/West Broadway

PK-Grade 8 | 4 Track

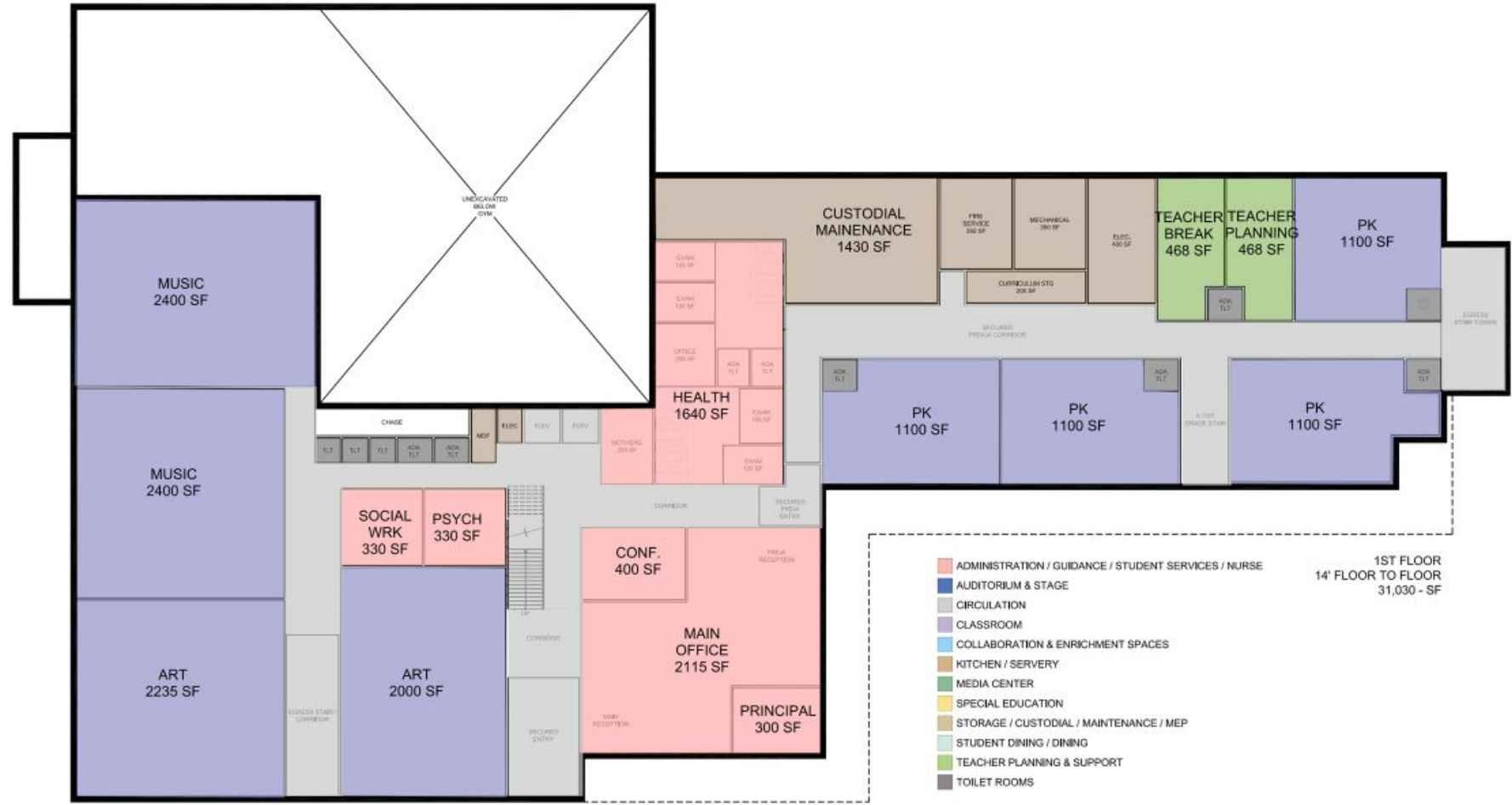


Providence
Schools



New PK-8 Asa Messer/West Broadway

First Floor Plan



Providence
Schools



ASA MESSER PRE-K - 8 SCHOOL

PROVIDENCE PUBLIC SCHOOL DISTRICT



ARCHITECTS • ENGINEERS • FACILITIES SOLUTIONS

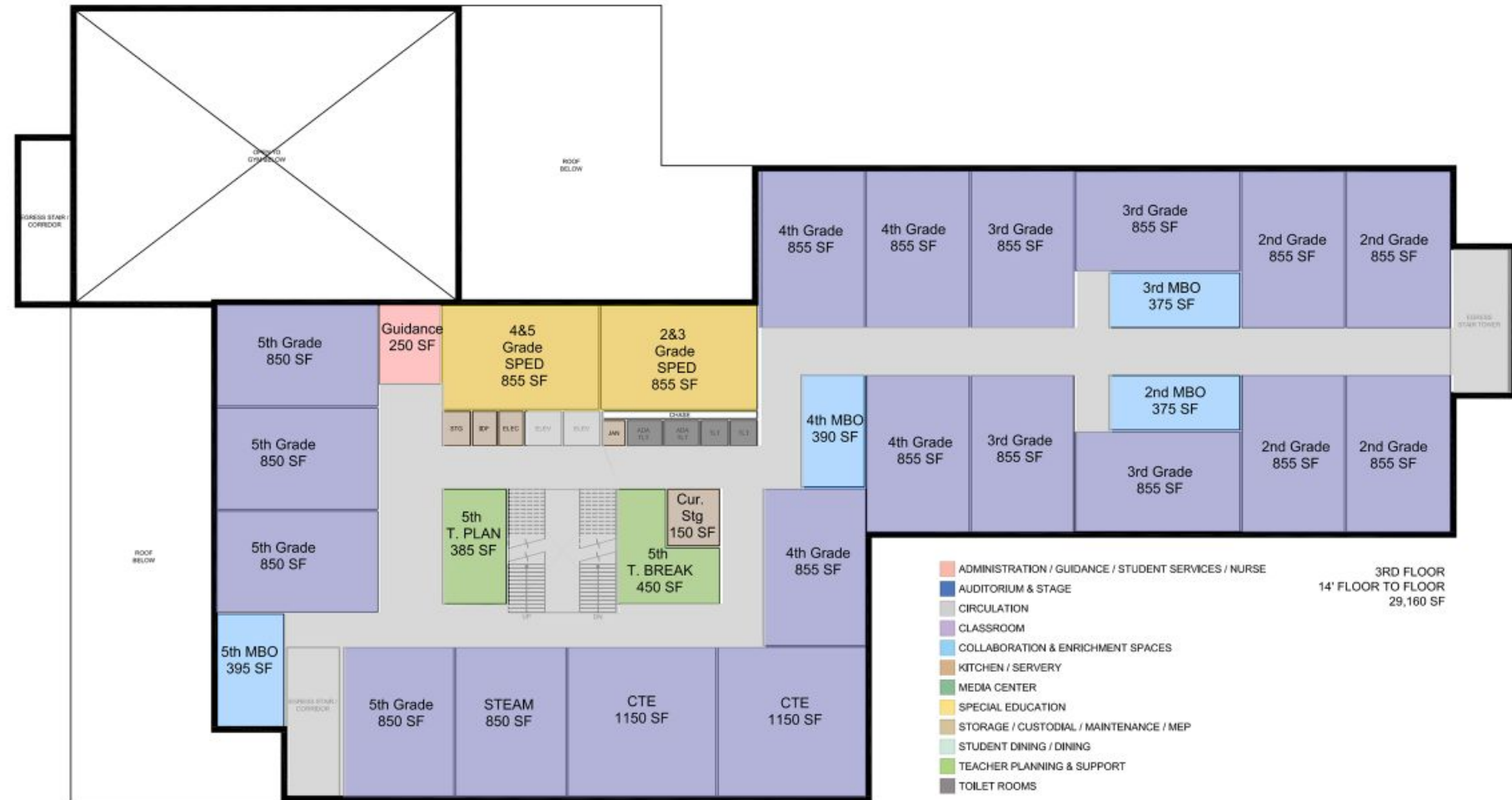
Second Floor Plan



STUDIO
JAED
ARCHITECTS • ENGINEERS • FACILITIES SOLUTIONS

New PK-8 Asa Messer/West Broadway

Third Floor Plan



Providence
Schools



ASA MESSER PRE-K - 8 SCHOOL

PROVIDENCE PUBLIC SCHOOL DISTRICT



ARCHITECTS • ENGINEERS • FACILITIES SOLUTIONS

New PK-8 Asa Messer/West Broadway

Fourth Floor Plan



Action Items

1. Approval of the Mary Fogarty PK-8 Schematic Design Documents. *The Providence School Building Committee approves the submission of the Mary Fogarty PK-8 Schematic Design Documents to RIDE for approval and authorizes Gilbane/Torrado to proceed with the Design Development Documents.*
2. Approval of the Harry Kizirian PK-8 Schematic Design Documents. *The Providence School Building Committee approves the submission of the Harry Kizirian PK-8 Schematic Design Documents to RIDE for approval and authorizes Dimeo/Studio JAED to proceed with the Design Development Documents.*
3. Approval of the Asa Messer/West Broadway PK-8 Schematic Design Documents. *The Providence School Building Committee approves the submission of the Asa Messer/West Broadway PK-8 Schematic Design Documents to RIDE for approval and authorizes Agostini/Studio JAED to proceed with the Design Development Documents.*
4. Approval of the Lima/Stuart PK-8 Schematic Design Documents. *The Providence School Building Committee approves the submission of the Lima/Stuart PK-8 Schematic Design Documents to RIDE for approval and authorizes Ahlborg/Torrado to proceed with the Design Development Documents.*
5. Approval of the Mount Pleasant Early College and Career Academy Demolition and Abatement and Early Packages Documents. *The Providence School Building Committee approves the submission of the Mount Pleasant Early College & Career Academy Demolition and Abatement and Early Bid Package Documents to RIDE for approval and authorizes Agostini/Perkins Eastman to proceed with the Construction Design Phase.*

Update for Messer/WB, RFK, and Lima/Stuart

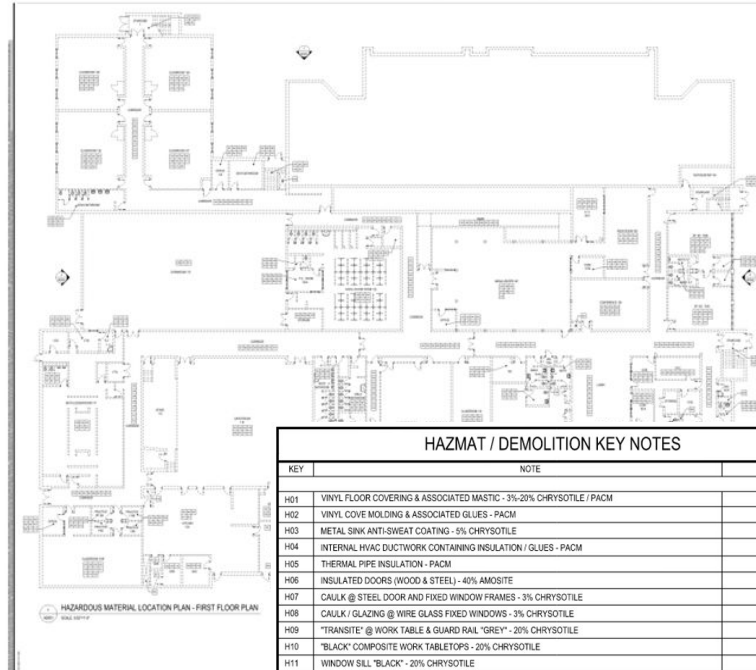
Projects being submitted for demolition and abatement

The links to drawings can be found:

📄 [Asa Messer](#)

📄 [Robert F Kennedy](#)

📄 [Gilbert Stuart](#)



HAZARDOUS MATERIAL LOCATION PLAN - FIRST FLOOR PLAN

HAZMAT / DEMOLITION KEY NOTES		
KEY	NOTE	QUANTITY
H01	VINYL FLOOR COVERING & ASSOCIATED MASTIC - 3%-20% CHRYSOTILE / PACM	
H02	VINYL COVE MOLDING & ASSOCIATED GLUES - PACM	
H03	METAL SINK ANTI-SWEAT COATING - 5% CHRYSOTILE	
H04	INTERNAL HVAC DUCTWORK CONTAINING INSULATION / GLUES - PACM	
H05	THERMAL PIPE INSULATION - PACM	
H06	INSULATED DOORS (WOOD & STEEL) - 40% AMOSITE	
H07	CAULK @ STEEL DOOR AND FIXED WINDOW FRAMES - 3% CHRYSOTILE	
H08	CAULK / GLAZING @ WIRE GLASS FIXED WINDOWS - 3% CHRYSOTILE	
H09	"TRANSITE" @ WORK TABLE & GUARD RAIL "GREY" - 20% CHRYSOTILE	
H10	"BLACK" COMPOSITE WORK TABLETOPS - 20% CHRYSOTILE	
H11	WINDOW SILL "BLACK" - 20% CHRYSOTILE	
H12	GWB / JOINT COMPOUND - PACM	
H13	"TAN" CAULK @ CMU EXPANSION JOINT - 3% CHRYSOTILE	±1,000 LINEAR FEET
H14	CEMENT BOARD @ FUMEHOODS - 20% CHRYSOTILE	
H15	CEMENT BOARD @ PLANTERS - 20% CHRYSOTILE	
H16	HVAC FLEX @ DUCT CONNECTOR - PACM	±100 LINEAR FEET
H17	TS @ GENERATOR EXHAUST PIPE - 10% CHRYSOTILE / 20% AMOSITE	
H18	THERMAL INSULATION @ GENERATOR EXHAUST - 20% AMOSITE	±15 LINEAR FEET
H19	STONE FLOOR TILE, GROUTS, FLOOR PAPER - PACM	
H20	"RED" FIRESTOP @ WALL / CEILING PENETRATIONS - PACM	
H21	"WHITE" CAULK @ CHIMNEY FLUE - 20% CHRYSOTILE	
H22	"TAN" PAPER / "BLACK" MASTIC @ COPPER FLASHING, EXTERIOR CMU WALLS (INTERSTITIAL SPACES IN WALLS AT WEEP HOLES, WINDOWS & DOOR FLASHING) - 5% CHRYSOTILE	
H23	EXTERIOR WATERPROOFING MASTIC AS APPLIED TO FOUNDATION WALL(S) / FOOTINGS, (BELOW GRADE) - PACM	
H24	"BLACK" WATERPROOFING MASTIC @ CMU WALL - 8% CHRYSOTILE	
H25	EXTERIOR ROOF TAR PAPER "BLACK" AND ROOFING MATERIAL @ ROOF AREA - 30% CHRYSOTILE / PACM	
H26	BURIED ACM PIPE BELOW GRADE, IN SOL OUTSIDE FOOTPRINT OF EXISTING STRUCTURE TO BE DEMOLISHED - PACM	

GENERAL DEMOLITION NOTES
1. EXISTING SCHOOL BUILDING AND ALL CONNECTORS TO BE RAZED TO THE GROUND. CONTRACTOR TO ENSURE THAT ALL UTILITIES AND OTHER SUPPLY LINES HAVE BEEN SHUT OFF AND CAPPED PRIOR TO START OF DEMOLITION. SANITARY SEWER SERVICE LATERALS SHALL BE CAPPED AND LABELED. INSPECTOR MUST SEE CAPS BEFORE COVERING. HAZARDOUS MATERIAL TO BE REMOVED ACCORDING TO ABATEMENT PLAN IN SPECIFICATIONS. ABATEMENT MEASURES TO BE IMPLEMENTED TO MINIMIZE IMPACT TO ADJACENT PROPERTIES. DUST CONTROL TO BE MAINTAINED AT ALL TIMES TO THE SATISFACTION OF THE CITY. COORDINATE W/ DIG SAFE AND MARK EASEMENTS AND UNDERGROUND UTILITIES.
2. GC TO CONFIRM WITH OWNER ALL ITEMS TO BE SALVAGED HAVE BEEN REMOVED FROM BUILDINGS PRIOR TO THE COMMENCEMENT OF ANY DEMOLITION.
3. THE WORK OF DEMOLISHING ANY BUILDING SHALL NOT BE COMMENCED UNTIL SCHOOL IS OUT AND THE REQUIRED PEDESTRIAN PROTECTION STRUCTURES ARE IN PLACE (PER THE INTERNATIONAL BUILDING CODE.)
4. NON-BEARING EXTERIOR WALLS SHALL BE CUT DOWN TO A SAFE LEVEL BEFORE BEARING WALLS ARE REMOVED. NO FREE-STANDING WALLS WILL BE ALLOWED.
5. GC TO PROVIDE AND IMPLEMENT A COMPREHENSIVE LOGISTICS PLAN OUTLINING LOCATIONS OF BARRICADES, SIGNAGE LOCATIONS AND MEASURES TO PREVENT UNAUTHORIZED ENTRY, AS WELL AS RE-ROUTING OF PEDESTRIAN AND VEHICULAR TRAFFIC. STAGING / STOCKPILING OF RUBBLE AND RECYCLABLE MATERIALS TO BE PROPERLY MANAGED AND SECURED FOR EVENTUAL LOADING AND TRANSPORT. ALL SIGNS TO CONTROL TRAFFIC IN THE PUBLIC STREETS AND RIGHTS OF WAY SHALL CONFORM TO THE REQUIREMENTS OF THE CITY.
6. OFF-SITE TRACKING TO BE MITIGATED BY USE OF SHAKER PLATES AND/OR STREET SWEEPER.
7. POWER, WATER, CABLE AND MAY OTHER UTILITY OR AGENCY AFFECTED BY THE DEMOLITION SHALL BE CONSULTED. OVERHEAD WIRING SHALL BE PROPERLY ADDRESSED.
8. LEAVE SITE IN CLEAN CONDITION, READY FOR SUBSEQUENT WORK.
9. ALL WORK FOR PLANNED ASBESTOS RESPONSE ACTION WORK TO BE CONDUCTED IN ASSOCIATION WITH THIS PROJECT MUST BE DONE IN ACCORDANCE WITH ALL CURRENT: RIDOH ASBESTOS CONTROL REGULATION (215-RCR-50-15-1), USEPA - AHERA 40 CFR 763, USEPA - USEPA NESHAP 40 CFR PART 61, US OSHA 29 CFR 1926.1101 AND OSHA 29 CFR 1910.1001 (AS APPLICABLE) AND THE REQUIREMENTS OF THE RIDOH APPROVED PROJECT SPECIFICATION INCLUDING ALL REFERENCES TO APPLICABLE ASB16, ASB16A AND ASB16B FORMS, APPLICABLE ATTACHMENTS AND WAIVERS. AT NO TIME SHALL THE ASBESTOS CONTRACTOR OF THE GC FOR THIS PROJECT BE ALLOWED TO AMEND OR CHANGE THE REQUIREMENTS OF THIS SPECIFICATION WITHOUT THE WRITTEN APPROVAL OF THE BUILDING OWNER, DOWNES CONSTRUCTION CO. OR STUDIOJAE ARCHITECTS. REMOVAL REQUIREMENTS AS DEFINED BY THIS SPECIFICATION SHALL BE CONSIDERED CONTRACTUAL. NO ASSUMPTIONS, ALTERNATES OR REVISIONS TO WORK REQUIREMENTS SHALL BE CONSIDERED ACCEPTABLE BASED ON TESTING DATA AS REPORTED FOR THE DESIGN OF THIS SPECIFICATION.

Capital Revolving Fund 2025 Final

Name	Budget
Pleasant View Generator and Site Work	\$ 475,000.00
Mt Pleasant secured vestibule/auditorium doors/small gym	\$ 1,193,000.00
Laurel Hill- Fogarty swing work- Scholar	\$ 64,822.00
Hope AV	\$ 1,838,874.00
Hope- back of house	\$ 1,260,000.00
Laurel Hill-City Work- Parking Lot/Gate/Radiator	\$ 21,500.00
Lima chiller (only include 50% cost to district).	\$ 247,500.00
Greene gym floor/gym roof/ drop ceiling/ girls locker room	\$ 812,320.00
Delsesto-exterior repairs	\$ 237,261.00
Hope Retaining Wall	\$ 48,310.90
Economy	\$ 146,733.00
Rental for Lima Chiller	\$ 56,500.00
Professional Services (OPM and SJ)	\$ 250,000.00
	\$ 6,651,820.90

New dance room at HOPE HS



New Lima chiller being installed

Capital Revolving Fund 2026 Projection

Gym Restoration at Carnevale and striping at Kizirian @ Narducci	\$ 91,392.00
Delsesto MS and Classical- Roof Repairs	\$ 511,977.00
Radiator enclosures at Fogarty	\$ 13,500.00
Secure Vestibule (Young Woods and Reservoir) Exterior Lights	\$ 227,000.00
Security Vestibule Roger Williams	\$ 18,366.00
PCTA Handicap door push button (7 doors)	\$ 97,900.00
Classical Roof additional repairs	\$ 100,000.00
Carnevale Roof (Possibly a change order to Delsesto and Classical)	\$ 150,000.00
Hope High Additional Work	\$ 100,000.00
Greene Classroom Project	\$ 30,000.00
Sackett Classrooms for Aug. 15th	\$ 19,836.57
Insulation at George West	\$ 19,895.00
HOPKINS Sprinkler Deficiency	\$ 2,415.00
HOPE Fire Alarm Deficiency	\$ 58,076.00

Bldg. Envelope Repairs

This category addresses building envelope repairs such as, but not limited to masonry, water penetration, roof repairs, drainage caps etc. The purpose is to address any deficiencies that will improve the overall lifecycle of the facility and make the building more efficient.

MEP/Fire Protection Upgrades

This category focuses on upgrading key mechanical systems and fire protection equipment, such as HVAC, boilers, chillers, fire sprinklers, and detection devices. The goal is to address deficiencies, enhance the building's lifecycle, and improve safety for occupants.

Security Upgrades

This category focuses on improving overall safety and security of each facility for its occupants. Examples of this include but are not limited to creating secured vestibules to separate visitors from students and staff, improving outdoor lighting throughout the perimeter, addressing access control deficiencies etc.

Site Improvements

This category addresses site improvements to ensure the outdoors are safe for students, staff, and visitors. Examples include but are not limited to masonry repairs, repavement of parking lots, replacement of sidewalks, improvements to existing playground structures and or site, repairs to retaining walls, etc.

Minor Interior Construction/Renovations

This category focuses on addressing small scale construction improvements throughout a building to improve the overall quality of a facility. Examples include but are not limited to door/window repairs/replacements, flooring, building wide painting, creating food pantries spaces, addressing electrical upgrades etc.

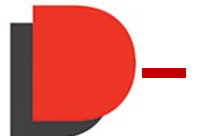
Classroom Improvements

This category aims to enhance educational spaces for students and staff, including improved lighting, millwork repairs/replacement, ceiling updates, minor interior renovations, and upgrades to existing instructional spaces.



MAYOR BRETT P. SMILEY
CITY OF PROVIDENCE

Providence
Schools



Capital Revolving Fund 2026 Projection

HOPE Migrate Fire Alarm Devices - Full Fix	\$ 373,680.00
WEST BROADWAY replace air compressor for fire alarm system	\$ 3,406.00
RESERVOIR Sprinkler Deficiency	\$ 2,365.00
Pleasant View Sewage	\$ 700,000.00
Concrete/sidewalk/parking lot repairs Reservoir	\$ 150,000.00
Concrete/sidewalk/parking lot repair Site Work Young Woods	\$ 150,000.00
Leak in Hopkins Auditorium	\$160,000
Professional Services (Architect and OPM)	\$250,000
Concrete/sidewalk/parking lot repair Site Work Carnevale	\$ 150,000.00
Emergency Funding	\$1,800,000.00
Total	\$5,179,808.57



MAYOR BRETT P. SMILEY
CITY OF PROVIDENCE

Providence
Schools

