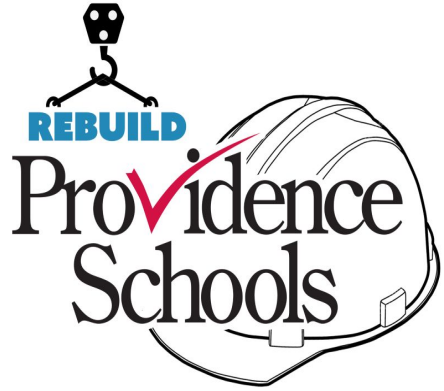


A photograph of a classroom setting. In the foreground, a young boy with dark skin and short hair is looking at a laptop screen. He is wearing a dark blue hoodie with a yellow graphic. Behind him, a girl with long brown hair is writing on a piece of paper. In the background, a teacher with long blonde hair and glasses is smiling. The classroom has a bulletin board with various papers and a world map. A red rectangular overlay is positioned on the left side of the image, containing white text.

Providence Schools

**Providence School Building
Committee**
January 2025

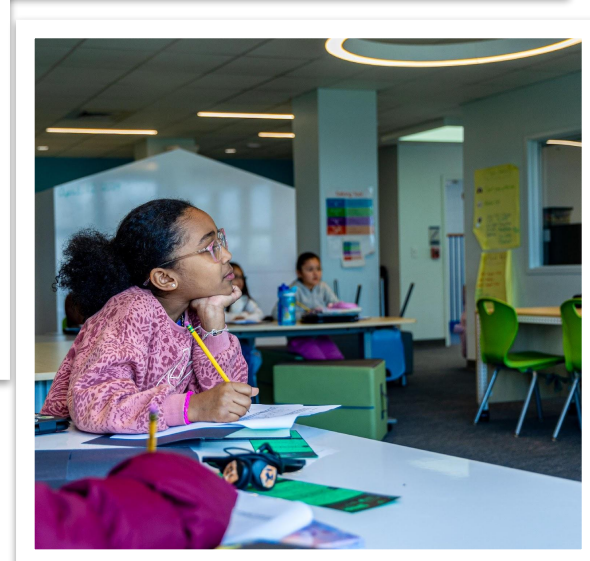
The Challenge & Opportunity



Our school buildings suffer from **decades of underinvestment** and ineffective band-aid fixes. With new funding opportunities and a strategic capital plan aligned with instructional programs, **transformational change** is happening.

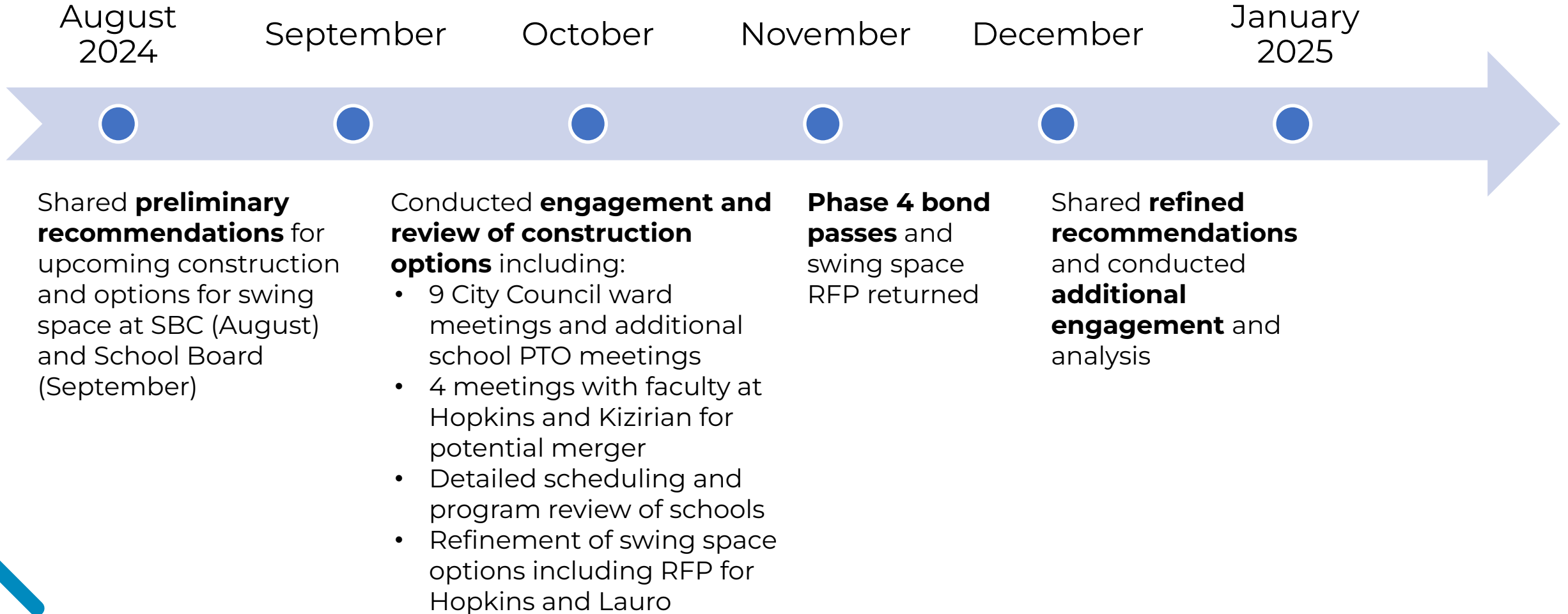
Our goal: **We will have enough seats for all PPSD students to be in new or like-new facilities by 2030.**

Reaching this goal requires an aggressive timeline and careful swing space planning for multiple phases of construction



Swing Space Planning Timeline

In September we shared preliminary recommendations which were revised based on additional engagement and analysis



Swing Space Revised Recommendation

Based on additional engagement and analysis, PPSD shared refined recommendations for upcoming school construction

Asa Messer Elementary

- Final phase 1-3 project requiring swing space
- Carl Lauro identified as recommended swing space due to size and proximity to school
- Construction will last two years before school merges with West Broadway Middle in 2027-2028

Robert F. Kennedy Elementary

- Phase 4 project prioritized due to PK-8 conversion and lowest facilities rating among elementary schools
- Hopkins identified as recommended swing space due to proximity to school
- RFK will co-locate with Hopkins for two years until reopening as PK-8 in 2027-2028

Hopkins Middle

- Lowest rated middle school facility after West Broadway without identified phase 4 construction project
- Identified for phase out with grades 7-8 remaining at school for 2025-2026 and grade 8 in 2026-2027

Engagement and Info Sharing

PPSD has taken several steps to share information and gather feedback on recommended plan

December and January activities

- Initial meetings with school faculty to share plans in December
- Listening sessions at each school in December to gather initial feedback
- Two sets of sessions at each school in January (in person and virtual) to share answers and gather additional feedback
- Tour of Lauro swing space and renovated Spaziano Elementary with Asa Messer families and faculty members
- Frequently asked questions for each school distributed to families as well as project websites for ongoing information

What we heard and how we are addressing

PPSD has taken action on a number of areas of feedback, with the below being those that have been most consistent

Asa Messer	
Item	Plan to Address
Concerns about quality of Lauro facility	<ul style="list-style-type: none">• Significant improvements to site planned in addition to those done to support D'Abate as swing space• Tours with families and faculty members
Accessibility needs for students with mobility issues	<ul style="list-style-type: none">• Addition of exterior ramps into building• Shared plans to relocate 5 classrooms temporarily to Narducci• Based on feedback, revised plan to keep additional special education classroom with Lauro

Kennedy	
Item	Plan to Address
Concerns about co-location with older student population	<ul style="list-style-type: none">• Retain separate staff and administrative teams• Separate start and end times for each school• Separate spaces – Kennedy will occupy ground, first and second floors; Hopkins will occupy third floor
Impact to recreation center	<ul style="list-style-type: none">• Working with construction team to determinate impact to recreation center• Working with Parks and Recreation Department on plan for aftercare support when center is offline; likely involves recreation center staff conducting after school programming at Hopkins

Swing Space Improvements

Improvements are planned to both Lauro and Hopkins to prepare buildings to serve as swing space

Carl Lauro

- Use portion of building used most recently as swing space for D'Abate Elementary in 2022-2023
 - Improvements were made to the building prior to D'Abate using the space
- Construction anticipated to begin in January 2025 and be ready by summer 2025 for move-in
- Key areas of work include:
 - Repairs to masonry, flooring, windows and ceilings
 - Painting
 - Improvements to parking lot and installation of exterior service ramp
 - Replacement of all door hardware/locks
 - Ensure all core building systems (e.g., electrical, plumbing, heating) are operational
 - Installation of radiator covers
 - Installation of bottle filling stations
 - Addition of air conditioning units

Hopkins

- Construction anticipated to commence at end of school year to complete prior to start of school year
- Key areas of work include:
 - Repairs to ceilings and floors in classrooms and hallways
 - Improvements to restrooms to ensure they are age appropriate
 - Improvements for accessibility on the basement level
 - Exterior improvements including a fenced in play space for the school's earliest learners and pavement and sidewalk repairs.

Swing Space Decision

Based on engagement and analysis of construction plans, we will move forward with the revised recommendations for the upcoming school year

Upcoming Engagement for Kennedy and Messer

February-June

1. Visioning Review
 - a. Audience: District/School Leadership/Architects/Contractor
2. School Tours: D'Abate/Spaziano ES/Narducci
 - a. Audience: District/School leadership/architects/parents/community
3. Visioning 1
 - a. Audience: District/School Leadership/Architects/Contractor
4. Workshop 1
 - a. Audience: District/School Leadership/Architects/Contractor/Staff
5. Visioning 2
 - a. District/School Leadership/Architects/Contractor
6. Workshop 2
 - a. District/School Leadership/Architects/Contractor/Parents/Community

Summary of swing space

Maximize impact of funds and minimize disruption to students, expanded middle school options

Current recommendation: contingent on funding, community engagement, and design timelines

	Narducci	Laurel Hill	Hopkins	Lauro (One Half)
2024-2025	Kizirian PK-5	Fogarty K-5	Hopkins	Vacant
2025-2026	Kizirian expands to Grade 6 (PK-6)	Fogarty K-5	Kennedy K-5 & Hopkins Grades 7 & 8 (290/10)	Messer PK-4
2026-2027	TBD	TBD	Hopkins Grade 8 (150/7) & Kennedy K-6 (520/22)	Messer PK-4

2026-2027

- Kizirian PK to Grade 7 in new PK-8 building
- Fogarty PK to Grade 6 in new PK-8 building
- Kennedy in Hopkins, grows to K to Grade 6
- Spaziano Dual Language in new 6-8 building
- Laurel Hill & Narducci available for swing space

2027-2028

- Messer & West Broadway in new PK-8 building
- Kennedy PK to Grade 7 in new PK-8 building

Total of **five PK-8 options** for rising Grade 6 students in addition to four middle schools