



Bulldogs Out of School Time

Rules and Program Information



Management Staff



Regan Huff
Program
Manager



Stacey Schreijer
Office
Manager



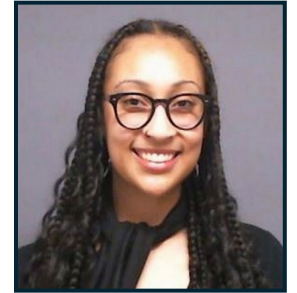
Brenda Boyd
Lead Site Manager
A.M. Float



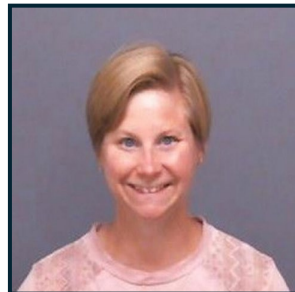
Olivia Farina
Lead Site Manager
P.M. Float



Kimmie Brown
Site Manager
A.M. Float



Adrianna Anderson
Site Manager
PT Float



**Rachel
Lefler**
Site Manager
Brown
Elementary



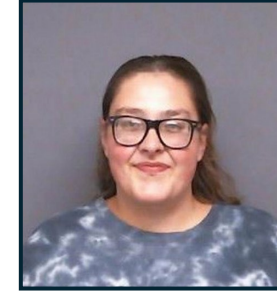
**Sophia
Naberhaus**
Site Manager
Cardinal/DT
Elementary



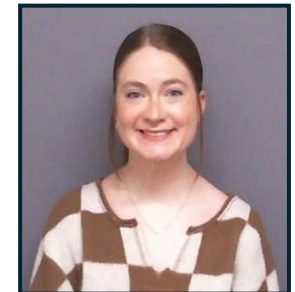
**Daniel
Heidenreich**
Site Manager - Float
Cardinal/DT
Elementary



**Rayanna
Browning**
Site Manager
Crossroads ES
EMS/WMS – 6th Gr.



**Kaitlyn
Huffman**
Site Manager
Reagan/Lincoln
Elementary



**Hannah
Sanders**
Site Manager
White Lick/EA
Elementary

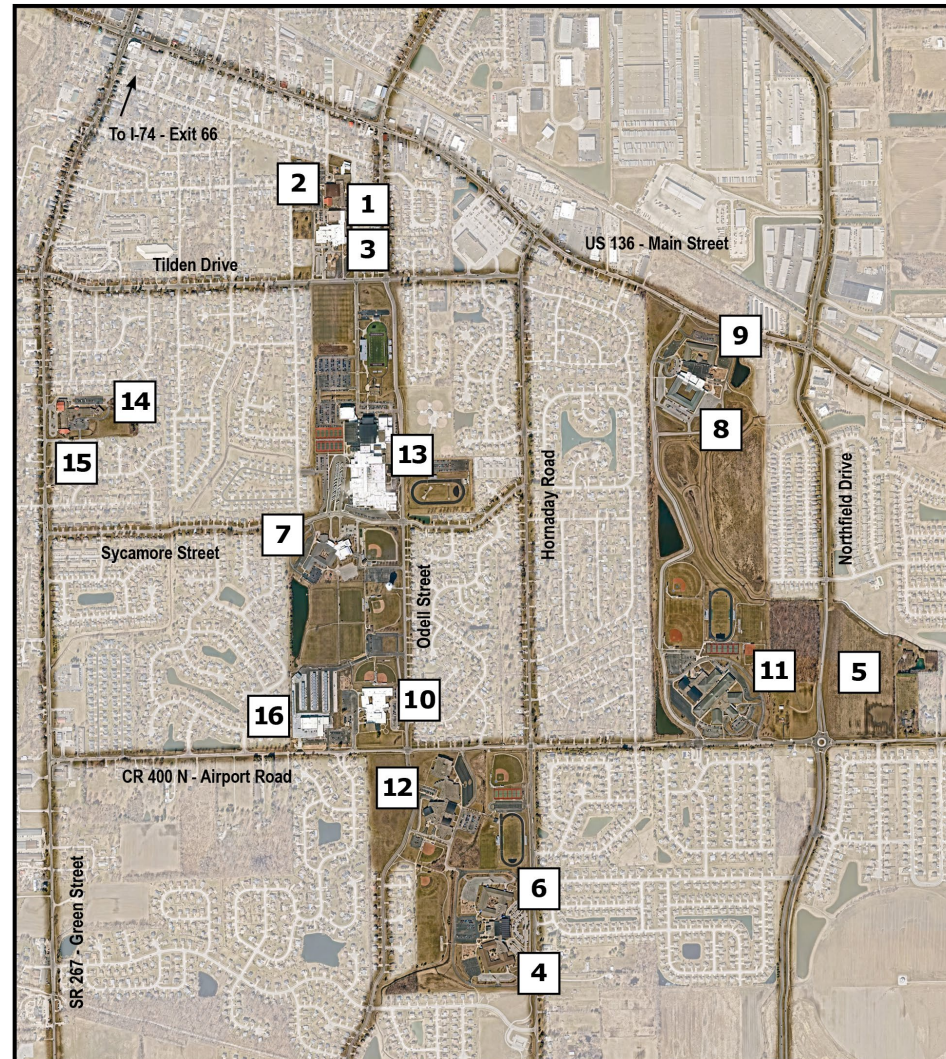


Locations of Before & After Care



Brownsburg Community School Corporation

1. Central Office - 310 Stadium Drive
2. Early Childhood Center
- 3. Brown Elementary School**
- 4. Cardinal Elementary School**
- 5. Crossroads Elementary School**
6. Delaware Trail Elementary School
7. Eagle Elementary School
8. Lincoln Elementary School
- 9. Reagan Elementary School**
- 10. White Lick Elementary School**
11. East Middle School
12. West Middle School
13. Brownsburg High School
14. ALPHA
15. Harris Academy
16. Transportation & Facility Services



3. Brown Elementary
Enter Door 18 – Back of Building
340 Stadium Drive, Brownsburg, IN 46112

4. Cardinal Elementary / Delaware Trail
Enter Door A – Front Main Door
3720 Hornaday Road, Brownsburg, IN 46112

5. Crossroads Elementary - EMS/WMS
Enter Door 4 – Back of Building
340 Stadium Drive, Brownsburg, IN 46112
6th Graders will be transported to/from Crossroads via BCSC Bus.

9. Reagan Elementary / Lincoln
Enter Door 4 – Back of Building
4845 Bulldog Way, Brownsburg, IN 46112

10. White Lick Elementary / Eagle
Enter Door 8 – Back of Building
1400 S Odell Street, Brownsburg, IN 46112
Eagle students will be transported to/from White Lick via BCSC Bus.

Boost Hours of Operation

BOOST AM Care / Mon - Fri	6:30am – 8:30am		
BOOST PM Care / M, Tu, W, F	3:40pm – 6:00pm	/ Crossroads – 6th Grade	2:35pm – 6:00pm
BOOST PM Care / Wednesday	3:10pm – 6:00pm	/ Crossroads – 6th Grade	2:05pm – 6:00pm
BOOST Full Day Childcare	6:30am – 6:00pm		

SEVERE WEATHER & CANCELLATIONS

Parents/guardians will be notified via text and email with any program cancellations or changes to the schedule. BOOST follows all established Brownsburg Community School Corporation (BCSC) policies and procedures in the event of a fire, tornado, weather emergency, natural disaster, extreme temperatures, air quality alerts, or other emergency-related situations.

- **Two-Hour Delays:** BOOST will remain open for regular program hours and remain in session until the school day begins.
- **School Cancellations:** BOOST will close. Refunds will be issued to those registered for the day.
- **Extreme Heat/Air Quality Alerts:** Outdoor programming may be modified if temperature/air quality index levels fall outside of the healthy recommended guidelines for children.
- **Severe Weather Warnings:** Upon an issued warning, staff and participants will immediately seek shelter. In accordance to BCSC policies, participants may not be released from the program until the severe weather warning has been lifted.



Typical Schedule

Before School

- 6:30am – Stations in the Cafeteria/Gym
- 7:45am – Clean up stations
- 7:50am – Physical activity outside or gym
- 8:20am – Clean up and pack up for class
- 8:30am – Dismissed to class

After School

- 3:40pm* – Site team meeting with students
- 3:50pm – Snack
- 3:55pm – Begin stations in the cafeteria
- 4:30pm – Physical activity outside or gym
- 5:30pm – Enrichment Clubs in Cafeteria / Gym
clean up and pack up
- 6:00pm – End Of Day

*Hours adjusted for Wednesday early release and 6th grade arrival at Crossroads.



Registration Options

BOOST offers a 3 session minimum (AM or PM) per week.

Care must be scheduled by 5:00 pm each Friday, prior to the week of care. BOOST does not offer a drop-in option.

Care must be scheduled by 5:00 pm each Friday prior to the week of care.

***BOOST does not offer a drop-in option.**

2025-2026 BOOST PROGRAMS	AM DAILY RATE	PM DAILY RATE
AM or PM Daily Rate	\$14.33	\$17.89
AM and PM Daily Rate	\$32.22	
Full Day / Out of School Daily Rate*	\$49.21	
Consistent Daily Care for 2025-26 SY 180 School Days (20% discount)	\$2,063.50	\$2,575.87
	does not include full day/out of school days MUST BE PAID IN FULL BY 8/11/25	
Late Pick-Up Fee*		\$5.00/minute past 6PM
Non-Refundable Annual Registration Fee*	\$65.00	
*Registration fees, Late pick-up fees, & Full-Day Care Options are NOT reduced by the free and reduced assistance program.		

Fees are billed the Monday AFTER the week of attendance. Accounts are considered delinquent if not paid in full by 5:00 PM on Friday.

Account owners with outstanding balances as of 5:00pm on Friday will be notified that their account is in default and their child will be ineligible to continue to attend the program effective the first day of the following week.

- Preferred Payment Online by credit card or autopay - My ProCare - www.myprocare.com, **please call BOOST at 317-852-1008 for an autopay link.**
- Card Only online or in person at the BOOST office only, located at 310 Stadium Drive, Monday-Friday 7:30 AM - 4:30 PM.

Site Managers will not accept payment at the BOOST school sites.

**BOOST is doing our best to make sure that we don't have to waitlist any student. Staffing drop-in care is not conducive to preventing wait lists. You can choose a 3-session option and schedule your student weekly, as long as they are scheduled by 5pm on Fridays, prior to the week of care. However, if you don't use all 3 sessions in a week, you will be charged for all 3 sessions.*



BOOST utilizes the Procure software for registration, scheduling, and payment processing.

Tips and Troubleshooting:

- Once your student is registered, please login to myprocare.com and setup your profile. You will not have access to the scheduling feature until the annual registration fee is paid. There are no discounts or refunds on the registration fee.
- Procure only allows scheduling 12 weeks from current date.
- Procure works best on a desktop. **Please do not use the app**, it is not helpful.
- Procure is setup a little different, instead of selecting your dates, all dates are already selected, and you must deselect the dates that you don't want.
- Link for example to schedule - <https://www.youtube.com/watch?v=ncjcAms7ECI>



Communication/Additional Fees

It is imperative to communicate all transportation changes via phone or email to the SCHOOL FRONT OFFICE as early in the day as possible.

**** EACH BOOST SITE CLOSSES PROMPTLY AT 6:00PM ****

LATE PICKUP FEE: Late fees of \$5 per minute will be automatically charged beginning one minute past the closing time of 6:00pm according to the program tablet. Late fees will be invoiced immediately and must be paid in full before your child may attend any future sessions.



Medication Dispensing

BOOST staff does not have access to the BCSC clinic during program hours.

- All families must complete and return the BOOST Medical Information/Consent Form, and the over the counter Medication form.
- If your student has a prescription medication to dispense during BOOST, the Hold Harmless form must be completed in the BOOST Office at Central Office, or the BOOST Site. All medication must be provided at that time in the original prescribed container with the child's name and dispensing instructions clearly labeled.
- All medication will be stored securely onsite in a locked storage.



Snack/Meals/Drinks

- BOOST does not serve drinks, please send your student to BOOST with a refillable water bottle.
- BOOST serves afternoon snacks, and full day snacks when offered. You are welcome to pack your own snack, if preferred. No sharing of food permitted.
- BOOST does not offer breakfast or morning snack. Please provide breakfast for your student before BOOST, send your student with breakfast, or please provide funds on their My School Bucks account and BCSC Nutrition Services provides breakfast beginning at 8:30am. No sharing of food permitted. For more information about BCSC Nutrition Services, click here: [BCSC Nutrition Services](#)

Boost - Contacts

BOOST 317-852-1008

BOOST phone is manned during operating hours. Please leave a message outside of those hours and we will return the call.

BOOST Program Manager, Regan Huff

rhuff@brownsburg.k12.in.us

BOOST Office Manager, Stacey Schreijer

sschreijer@brownsburg.k12.in.us

Brown Elementary - BOOST_Brown@brownsburg.k12.in.us

Cardinal/Delaware Trail - BOOST_Cardinal@brownsburg.k12.in.us

Crossroads/EMS/WMS - BOOST_Crossroads@brownsburg.k12.in.us

White Lick/Eagle Elementary - BOOST_Whitelick@brownsburg.k12.in.us

Reagan/Lincoln Elementary - BOOST_Reagan@brownsburg.k12.in.us