



FALL 2025

Ignite. Inspire. Empower.

COMMUNITY Messenger



Español

A Message from the Superintendent

Dear Marquardt School District 15 Community,

It is my honor and privilege to greet you as the Superintendent of Schools for Marquardt School District 15. I'm excited to share that we've officially launched a bold and purposeful strategic plan that sets a clear path for our district's future through five key priorities:

1. EDUCATIONAL EXCELLENCE

2. FAMILIES & COMMUNITY

3. LEARNING ENVIRONMENT

4. PROFESSIONAL COMMUNITY

5. RESOURCE STEWARDSHIP



MISSION

To provide a high-quality, innovative education so that each student is inspired and empowered to discover and fulfill their unique potential as responsible and empathetic global citizens.

CORE VALUES

Stakeholder Voice

Diversity, Equity & Inclusion

Accountability

Continuous Improvement

Learning Environment

At the heart of this strategic plan is our motto: **Ignite. Inspire. Empower.** These three words guide all we do by igniting a passion for learning, inspiring excellence, and empowering our students and community to reach new heights.

Every day, we live our values—listening to stakeholders, promoting equity and inclusion, staying accountable, striving for continuous improvement, and creating a thriving learning environment. With the dedication of our talented teachers and the partnership of families and community members, we're helping every student reach their potential.

Your voice matters, and we're committed to open dialogue as we continue to grow together. Thank you for your ongoing support and for being an essential part of our mission to create a brighter future for every student.

Warm regards,

Ms. Lucilla Dávila

Ms. Lucilla Dávila, Superintendent of Schools





1. EDUCATIONAL EXCELLENCE

Our professional educators use data and best-practice research to enhance student growth and close achievement gaps. Through personalized interventions and enrichment activities, we are engaging all students in rigorous learning that supports academic progress and social-emotional development.

93%
Average Daily Attendance
2,408
Students

Supporting Progress for English Language Learners

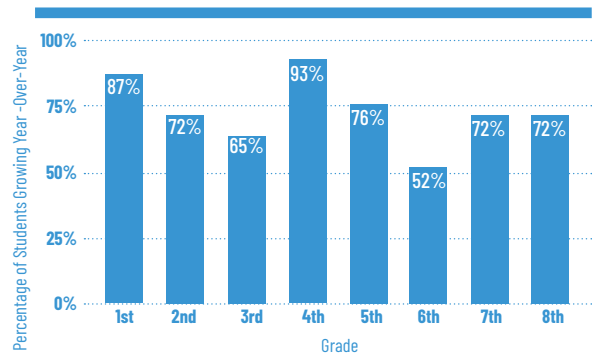
Marquardt English Language Learner (ELL) students have made exemplary growth on the ACCESS assessment, surpassing previous district and state growth percentages at every grade level. ACCESS is an annual English language proficiency test for K-12 students that measures progress in four key areas:

LISTENING **SPEAKING** **READING** **WRITING**



37% Of our student body identify as English Language Learners

Multi-Year ELL Student Growth on ACCESS Exam



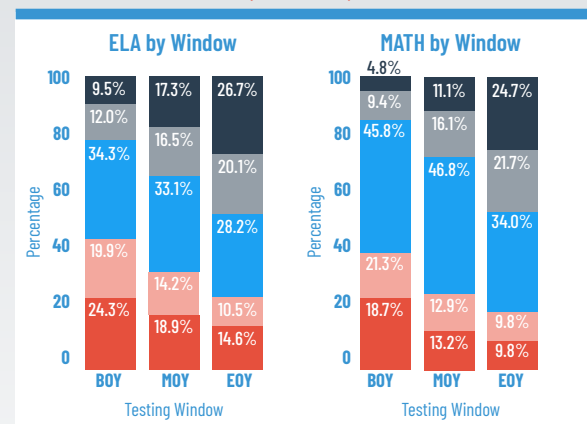
Source: Data from Illinois State Board of Education – state ACCESS test.

Narrowing the Achievement Gap

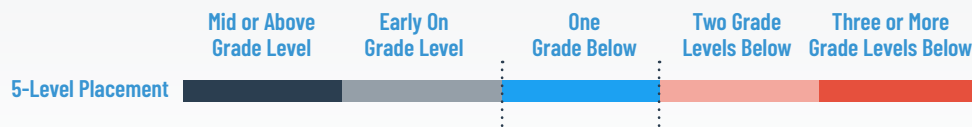
This year's i-Ready benchmark data shows a clear narrowing of the achievement gap, with more students reaching grade-level performance in ELA and Math. i-Ready assessments are administered three times a year (fall, winter, and spring) to help teachers understand each student's strengths and areas for improvement. The test adjusts difficulty based on student responses, allowing teachers to personalize instruction and monitor progress throughout the year.

In the fall, over 78% of students were below grade level in Reading and 86% in Math. By spring, those numbers dropped to 53% in Reading and 54% in Math. Students performing at or above grade level grew by 17% in Reading and 20% in Math.

Grade Level Proficiency Improvement (All Students)

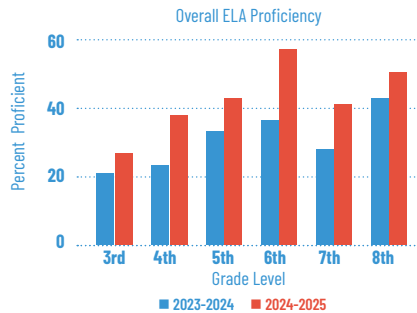
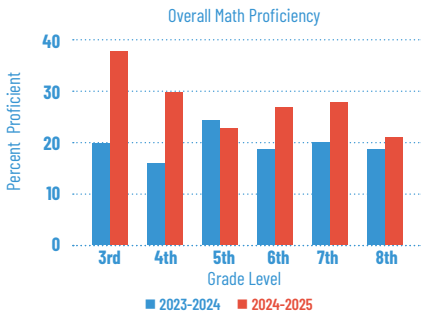


The Mapping Between 5-Level and 3-Level Placements





Illinois Assessment Readiness Score Meet Scores for Marquardt 15



Cutoff Scores for "Meets" on Illinois Assessment of Readiness

Grade	ELA		MATH		SCIENCE	
	OLD	NEW	OLD	NEW	OLD	NEW
3	750	735	750	732		
4	750	737	750	740		
5	750	739	750	740	799	812
6	750	741	750	742		
7	750	743	750	745		
8	750	745	750	745	799	812

Curriculum Pilots in Literacy and Music

This school year, we are piloting K-8 curriculum materials for literacy and adopting a new elementary music curricular resource to support high-quality, standards-aligned instruction.

LITERACY: This fall, K-8 educators will pilot new literacy materials chosen using a rubric based on the Illinois Comprehensive Literacy Plan and the Science of Reading. After reviewing student data, teachers will recommend curricular resource(s) for community review and Board approval in spring. Teacher training and support will follow.

MUSIC: In 2024-25, the elementary music department piloted new curricular resources—the first update since 2005-2008. After public review, the Board approved QuaverMusic, which features culturally diverse, authentic music, technology integration, and alignment to state standards. Teachers will be trained in 2025-26.

Marquardt School District 15 Curriculum Adoption Process Year 2 (SY25-26)

AUG-DEC Pilot Resources	JAN-MARCH Recommendation for Adoption	MARCH-MAY Stakeholder Review & Adoption	SUMMER 2026 Staff Professional Learning
<ul style="list-style-type: none"> Information on pilot shared with families Teachers pilot new resources T & L provides support and check-in meetings Teachers review rubric and share feedback 	<ul style="list-style-type: none"> CAT/T&L team evaluate and decide upon preferred resource Recommend resource presented at BoE mtg Stakeholders review recommended resource 	<ul style="list-style-type: none"> BoE reviews stakeholder feedback/approve adoption Professional learning on newly adopted resources for admin and teachers 	<ul style="list-style-type: none"> Professional learning on newly adopted resources for admin and teachers Resources allocated to buildings Implementation expectations developed and shared

T&L stands for Teaching and Learning Department.
BoE stands for Board of Education.
CAT stands for Curriculum Adoption Team.

2025 Illinois Assessment of Readiness Update

The annual Illinois Assessment of Readiness (IAR) measures English Language Arts and Math skills for students in grades 3-8. The IAR helps determine if students are on track for college and career readiness and provides data for school accountability.



Expanded Special Education Programming

Starting in SY2025-2026, our special education services will expand to every school, focusing on inclusivity, flexibility, and student growth. Highlights include more co-teaching and inclusive classroom opportunities, flexible support outside the classroom, and paraprofessional help for students' executive functioning and behavioral needs.

Students will stay at their home school whenever possible, moving to specialized programs only when needed. This approach offers greater flexibility, equitable services, fewer school transitions, and stronger connections within the school community—while ensuring resources are used effectively.

17.8%

Of students receive special education services under an Individual Education Plan (IEP):



2. FAMILIES AND COMMUNITY

We continue to strengthen our partnerships with families and the community to build connections, open lines of communication, and explore collaborations for the benefit of our students.



Serving the communities
of Glendale Heights,
Addison, Bloomingdale,
Lombard, and
Glen Ellyn

Creating a Sense of Belonging for All Families

Our Bilingual Parent Advisory Committee (BPAC) brings families, teachers, district staff, and community members together to advise on our bilingual education programs, share resources, and strengthen engagement to support our English Language Learner students.

Bilingual Parent University is a free, 10-week interactive course designed to give parents practical, research-based tools to support their child's learning at home while building stronger family connections. Offered twice a year—in fall and spring—to fit into busy family schedules.

50+

Languages spoken
by Marquardt D15
students and families



The BPAC beams after an interactive parent workshop.

“Soup with the Superintendent”

Our “Soup with the Superintendent” gatherings offer a welcoming space to share District goals and visions, while allowing parents and community members to ask questions and engage with district leaders.



**JOIN US THIS FALL FOR EVENTS
IN YOUR COMMUNITY!**



Superintendent Dávila presents to the Addison Community.



3. LEARNING ENVIRONMENT

Our goal is to ensure that our schools and classrooms are safe, welcoming, respectful, and inclusive spaces that support quality teaching, rigorous learning, and positive peer relationships.

15:1

Student Teacher Ratio

22

Average Class Size

More than

50%

of students are
involved in school
clubs/activities

Back-to-School Bash for Students and Families

On Friday, August 1, we hosted our second annual Back-to-School Bash for students and families. This fun-filled day included an opportunity to meet our amazing school principals, enjoy summer treats, and participate in activities. 52 free dental exams were provided by the DuPage County Health Department. School secretaries were available to help families with registration, and our Boosters were on hand to share school spirit. At the Back-to-School Bash, we registered 122 students, including 22 new students to the district.

We welcomed all students back for the SY2025-2026 on August 13 with 93% of our students in attendance on the first day!



Families attend the Annual Back-to-School Bash.



Enhancing School Culture with 5Essentials Data

Many school improvement metrics focus on technical factors, such as grades and test scores. The annual Illinois 5Essentials Survey helps schools assess the strengths and areas for growth in school culture.

In 2025, Marquardt schools earned strong ratings in Collaborative Teachers and Effective Leaders, with gains in Instruction and Supportive Environment. Areas for growth include Family Involvement and, at some schools, Teacher-Parent Trust and Program Coherence.

Insights from the 5Essentials survey will continue to guide the district's strategic plan goals around Educational Excellence, Community Engagement, and Staff Collaboration.

The 5Essentials results for each of Marquardt 15's schools are available at:
<https://5-essentials.org/illinois/5e/2025>



Teachers attend professional learning.



4. PROFESSIONAL COMMUNITY

Marquardt is a place where professional educators can grow and thrive at every stage of their careers. We are committed to providing high-quality professional learning opportunities and inclusive workplace practices that reflect the needs of our community.

87.2%
Teacher Retention

57%
Teachers with a
Master's Degree
or Higher

Focus on Student-Centered Learning—High Engagement, High Rigor

Marquardt 15 partners with Instructional Empowerment (IE) to support our professional educators in promoting rigorous, student-centered learning. This summer, over 20 teachers and administrators participated in professional development opportunities to strengthen student engagement, collaboration, and autonomy. With a focus on increasing task complexity and deeper learning, this fall, our educators will implement student-led teams, align student tasks with learning targets and empower students to take more ownership of their learning.

As part of our collaboration with IE this past spring, Marquardt hosted IE's "Why Workshop and Destination Vision." The event convened 60+ Illinois, Michigan, and Minnesota school superintendents to discuss effective strategies to boost student voice and rigor.

Superintendent Dávila shared Marquardt District 15's student achievement gains and High Engagement, High Rigor initiative at the Superintendent Collaborative Conference in Nevada on June 26, highlighting how strong leadership and effective teaching drive results. We are proud to see our district's work recognized on a national stage—and even more proud of the lasting difference it continues to make for our learners every day.



Superintendent Dávila presents at Superintendent Collaborative Conference.

Marquardt Hosts Illinois Association of Latino Administrators and Superintendents

In April, Marquardt hosted the Illinois Association of Latino Administrators and Superintendents Conference, welcoming education leaders from across Illinois to discuss student achievement, equity, and leadership and share strategies for positive change in education. We are proud to continue leadership, innovation, and inclusion across Illinois and beyond.



Superintendent Dávila participates in roundtable at IALAS Conference.

BloomBoard Partnership Helps Marquardt "Grow Our Own" Teachers



Marquardt D15 partners with BloomBoard to help paraprofessionals earn their teaching licenses while continuing to work in the District. Currently, three paraprofessionals are participating, with two in the three-year program and one in the 18-month program. This flexible, competency-based program can be completed in two to three years and supports workforce development, retention, and diversity by addressing hard-to-fill positions.

Marquardt D15 partners with BloomBoard to help paraprofessionals earn

Evidence-Based Hiring Model Builds Stronger Schools—Join Us!

Marquardt uses an evidence-based hiring approach to build innovative, diverse teams that inspire learning. This data-driven process helps us select staff members who best fit our district's values and needs, moving beyond intuition to proven predictors of success.



We're always looking for compassionate educators, paraprofessionals, support staff, and substitutes who want to make a difference. Join our team! Explore career opportunities for our district at: www.applitrack.com/d15/onlineapp/default.aspx



5. RESOURCE STEWARDSHIP

We are committed to making effective, equitable, and efficient use of taxpayer dollars to maximize educational success for our students, schools, and the district.

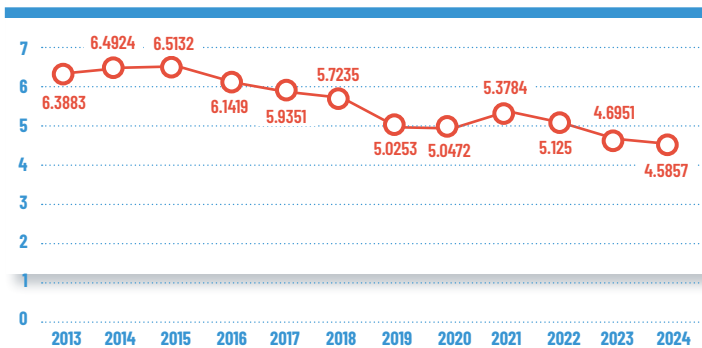
\$24K

Average Spending
per Student

Reducing Taxes, Maximizing Resources

Over the past ten years, Marquardt has reduced its tax rate by almost 28%. We were able to do this mainly through being recipients of the IL Property Tax Relief Grant. Our Evidence-Based Funding distribution increased by almost \$2 million as a result. This allowed us to lower our corresponding tax rate even further, offsetting local tax dollars with these monies from the State of Illinois. **No added cost to taxpayers.**

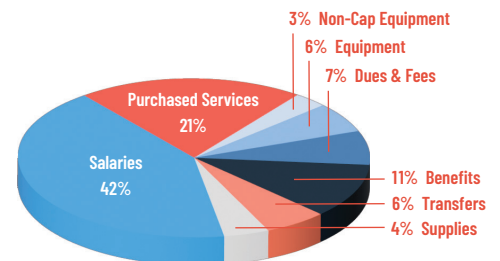
Marquardt 15 Tax Rate



Note: The Marquardt tax rate, combined with all other taxing body rates, is multiplied by the value of your home (Equalized Assessed Value) to get your total tax bill amount. Factors that can increase or decrease your tax bill include other taxing bodies increasing or decreasing their rates, or the value of your property going up or down.

In the 2024-25 school year, Marquardt School District budgeted 53% of total expenditures for teacher and staff salaries and benefits. Another 21% supported purchased services, including student transportation, special education assessments, and curriculum software.

Expenditures
by Category



Investing in Safe, Comfortable Schools



To support a safe and clean learning environment, 5.4% of our expenditures in 2024-25 included resources for school construction, including a \$3.5 million HVAC replacement at Black Hawk Elementary. The project was fully funded by the district's current fund balance at **no added cost to taxpayers** and will ensure **reliable year-round temperature** control.



New HVAC System at Black Hawk Elementary.



Español

ECRWSEDDM

Meet the District Leadership Team

Senior Cabinet



Basiliza Hernandez
Confidential Executive Assistant
to the Superintendent
and Board of Education



Miguel Vargas
Assistant Superintendent of
Business and Finance/CSBO



Dr. Rovel Pollock
Assistant Superintendent of
Human Resources



Leslie Weber
Assistant Superintendent of
Teaching and Learning



Michael Szopinski
Chief of Staff and Communication

Board of Education



Elisabeth Betancourt
President



Zahawa Saleh
Vice President



Jessica Dominguez
Secretary



Tunisia Macklin



Corey Randazzo



Jean Randazzo



Jim Vargas