

# FRIDAY FLASH

Pine-Richland Middle School

October 3, 2025

## In This Issue

- Annual Acknowledgement
- Order Your Yearbook
- Old Camera Donations
- Electronic Device Reminders
- Art Room Donations

## Quick Links

- [Pine-Richland Middle School](#)
- [Calendar of Events](#)
- [Daily Announcements](#)
- [Cafeteria Account](#)
- [Parent and Staff Association](#)

## Annual Acknowledgment Reminder

If you have not yet returned the 2025-26 Annual Acknowledgement form in Sapphire, please review and complete this required form as soon as possible. Thank you for your cooperation!

[Read More](#)



## Order Your Yearbook

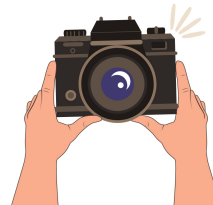
Don't miss your chance to own a piece of this year's memories - from unforgettable moments to candid snapshots, the yearbook captures it all. Order your yearbook today!

[Read More](#)



## Old Camera Donations

The Middle School Yearbook Club is looking for used camera donations so our student photographers can capture moments throughout the school day. Please send any donations to the middle school.



## In Case You Missed It

### Electronic Device Usage Reminders

Pine-Richland Middle School would like to remind families about Technology Policy #815 and the responsible use of devices issued to students.

[Read More](#)



## Art Room Donations

Mrs. Angeloff is requesting magazine donations to be used to create art in 8th grade in alignment with the district's initiative for sustainability. Send in magazines with your student or drop them off at the office.



## Peer Tutoring Program

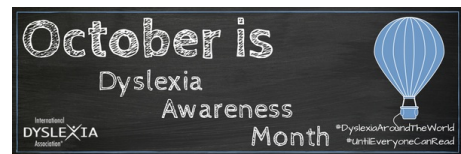
The High School National Honor Society holds a free tutoring program on Thursdays after school until 3:30 pm in the MS library. This is open to any middle school student who needs assistance with student success skills.



## Dyslexia Simulation Event

Parents and community members are invited to Pine-Richland's Dyslexia Simulation Event planned for **Wednesday, October 22**.

[Read More](#)



## PSA No-Fuss Fundraiser

Support the PRMS PSA by donating directly. Our no-fuss "Un-Fundraiser" is the only fundraiser where 100% of your donation benefits PRMS students and staff.

[Read More](#)



## Stock the Staff Lounge

Help stock the staff lounge by purchasing directly off our [Amazon Wishlist](#).



## Chick-fil-A Receipts

Turn in receipts from the Wexford or Cranberry location, and we will collect 20% for school event catering. Send receipts to the office in an envelope labeled *Chick-fil-A* or to [prmstreasurerpsa@gmail.com](mailto:prmstreasurerpsa@gmail.com).



## Like the New PSA Facebook Page

Like and follow the new PSA page on [Facebook](#)!



## Reminders

- Friday Flash submissions are due Wednesdays at 8 am to [prnewsletters@pinerichland.org](mailto:prnewsletters@pinerichland.org).
- Applications for [Free and Reduced Lunch](#) must be submitted every school year.
- [Children's Health Insurance Program](#) information.
- Check the [Friday Flash Archives](#) for past information.
- [Review library book titles under 30-day public review](#).



Pine-Richland Middle School | 100 Logan Road | Gibsonia, PA 15044 US

*You are receiving this communication because you opted in to email messages from Pine-Richland School District. To update your communication preferences, please click [Update Profile](#) below. If you received this from a friend and would like to subscribe, [you may do so here](#). To unsubscribe from **all** district communications, click the unsubscribe link below.*

[Unsubscribe](#) | [Update Profile](#) | [Constant Contact Data Notice](#)



Try email marketing for free today!