



Ms. McClead



Mrs. King



Mr. Compton



Ms. Madden

**6th Grade Language Arts
and Social Studies**





Teacher Contact Info

- You can reach any of us on **Parent Square**. Students may contact on following emails:

- [Dan Compton](mailto:dcompton@lwsd.org) dcompton@lwsd.org
- [Barb King](mailto:bking@lwsd.org) bking@lwsd.org
- [Madisson Madden](mailto:mmadden@lwsd.org) mmadden@lwsd.org
- [Iris McClead](mailto:imcclead@lwsd.org) imcclead@lwsd.org



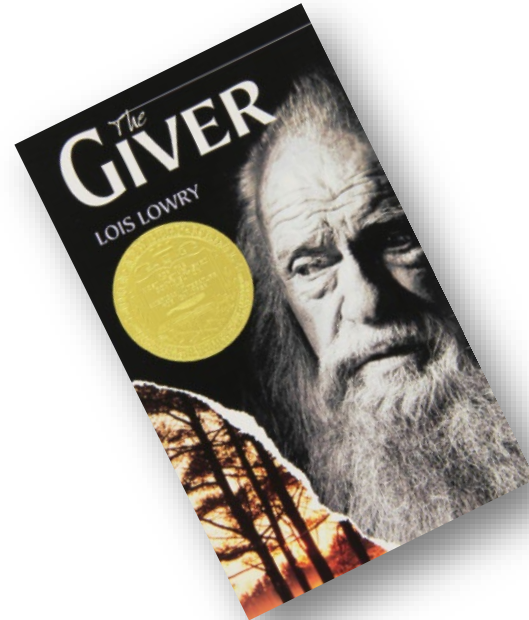
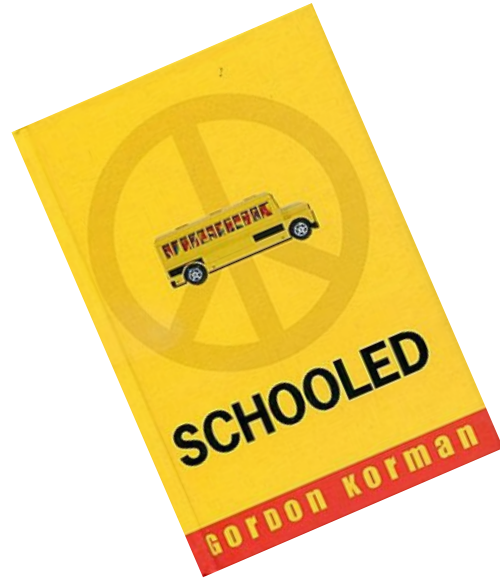
28 Lessons
6A: Dahl & Narrative



32 Lessons
6B: Mysteries & Investigations



25 Lessons
6D: The Greeks



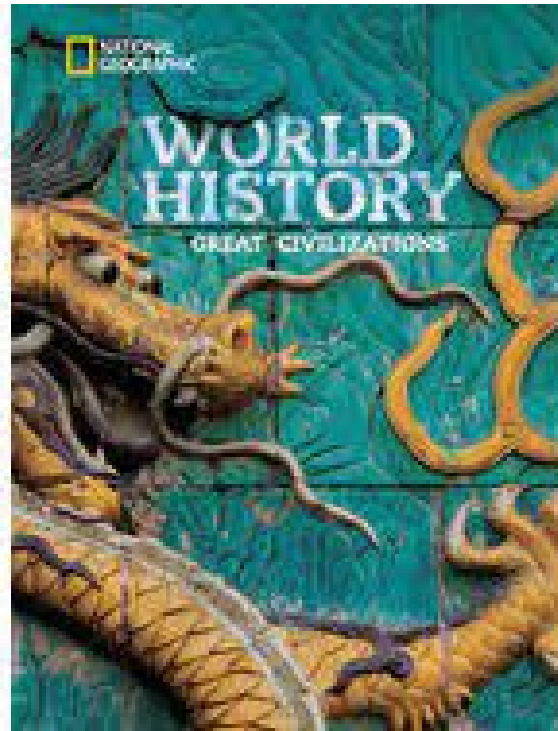
6th grade Language Arts

Reading, Writing, Speaking & Listening

- Amplify- Digital Curriculum
- Various Short Stories, Poems, Dramas
- *Schooled* by Gordon Korman
- *The Giver* by Lois Lowry
- Independent Reading Selections
- Literary Elements
- In-Text Citations & Analysis

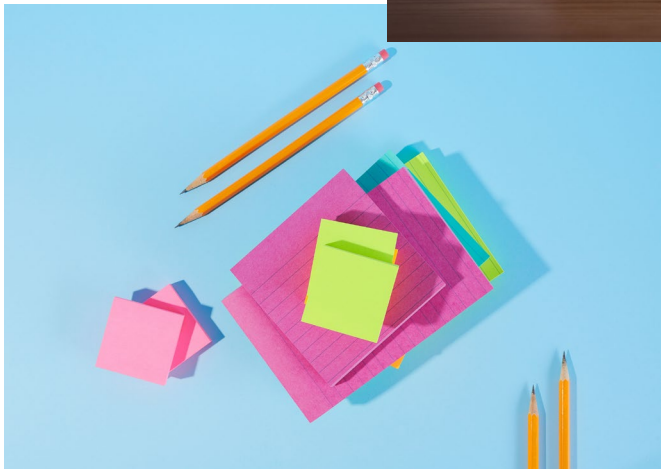
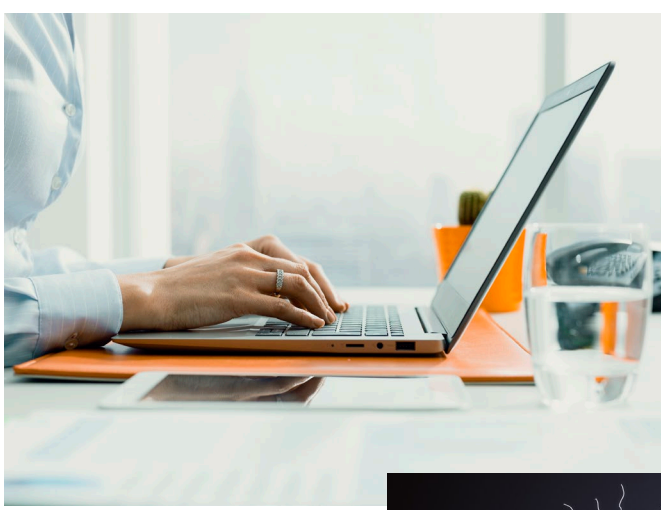
6th grade Social Studies

- Exploration of **Ancient Civilizations** answering the questions
 - Who?
 - What?
 - When?
 - Where?
 - Why?/How?
 - So What?



- Hunters/gatherers to civilizations
- Ancient Mesopotamia (Sumer)
- Ancient Egypt
- Ancient Greece
- Ancient China
- Ancient Mesoamerica
- Ancient Rome - Quest

- Current Events with Junior Scholastic*



Required supplies

- Students should have their laptops fully charged for each class.
- Students should always have an independent reading selection with them.
- Students need to have their basic school supplies including:
 - Pencil
 - Highlighter
 - Pen
 - Lined paper
 - A thin folder

Grading Practices & Homework Expectations

Middle School SBG Conversion Chart		
Proficiency Level Descriptors	Rubric Proficiency Score	Skyward Equivalency Score
<p>Exceeds Standard <i>Transfer of learning to more complex content and thinking (not new content), including deeper conceptual understanding and applications that go beyond what is explicitly taught in class.</i></p>	4	100
<p>At Standard <i>The standard/learning target: content, details, vocabulary, concepts, procedures, processes, and skills (simple and complex) explicitly taught in class.</i></p>	3.5*	95
	3	90
<p>Approaching Standard <i>Simpler content, details, vocabulary, procedures, processes, and skills, including foundational knowledge and concepts, explicitly taught in class.</i></p>	2.5*	80
	2	70
<p>Not at Standard <i>With help, partial understanding of some of the simpler and more complex content, details, vocabulary, concepts, procedures, processes, and skills.</i></p>	1.5*	64
	1	57
<p>No evidence of achievement <i>No evidence provided (*Typically this reflects work that is not submitted)</i></p>	0	50
* Demonstrates success at this content level plus partial success at the next higher level		

Students need to complete their homework on time. Retakes for major assessments are available provided all unit coursework is turned in and completed prior to the assessment. In Quest, the maximum score increase for a retake is 85 percent . In Gen Ed, it is a 90 percent.

*How you can
help your
child be
successful in
LA/SS*

- Help your student build an organizational routine at home such as charging their laptop, checking their agenda, and preparing for the next school day.
- Check Skyward for grade progress every two weeks and encourage your student to seek extra help during FLEX.
- Encourage students to advocate for themselves by communicating directly with their teacher for help.
- Celebrate effort and improvement, not just performance, to build confidence.
- Promote daily reading at home to build fluency, vocabulary, and comprehension.