

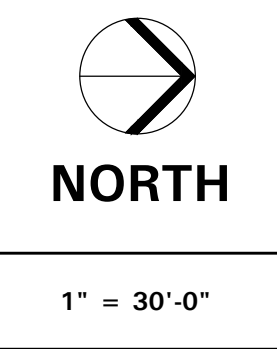
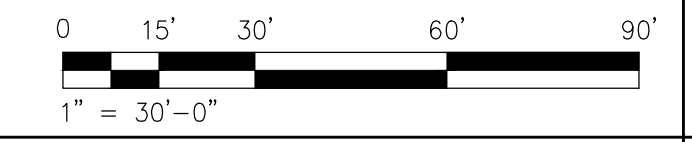
- KEYNOTES**
- ROUTE EXPOSED ABOVE BUILDING EXTERIOR CANOPY AS REQUIRED.
  - PROVIDE CONDUIT BUSHING FOR EXISTING CONDUITS. SEE DETAIL D/ET-5.3 FOR LABELING DETAILS.
  - SEE DETAIL C/ET-5.3 FOR CPB LABELING DETAIL.

- GENERAL NOTES**
- USE NEW CONDUITS FOR FIBER DISTRIBUTION. PROVIDE INNERDUCT WITHIN NEW CONDUITS TO PROTECT FIBER CABLING.
  - PROVIDE SERVICE LOOP IN PULLBOX. SEE DETAIL C/ET-5.3.
  - USE EXISTING FIBER PATHWAYS FOR FIBER CABLES WHERE NEW CONDUITS ARE NOT PROVIDED.
  - PROVIDE MACHINE GENERATED LABELS FOR ALL CABLE RUNS. SEE DETAIL D/ET-5.3.

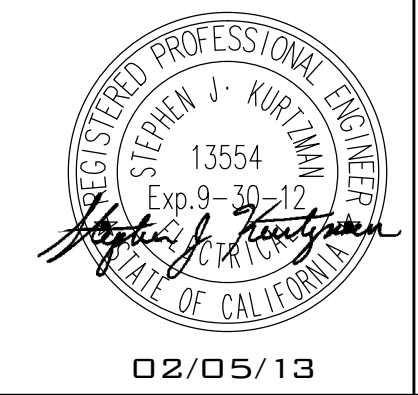
- SPECIAL NOTE**
- ALL EXISTING SYSTEMS, POWER, FIRE ALARM, TELEPHONE, BELLS, CLOCKS, ETC. TO REMAIN OPERATIONAL THROUGH CONSTRUCTION.

FIBER DISTRIBUTION			
CONDUIT SEGMENT NAME	FROM	TO	CONDUITS
C-1	MDF	CPB-1	2"   1/2"
C-2	CPB-1	CPB-6	1" -
C-3	CPB-6	CPB-5	1" -
C-4	CPB-5	CPB-4	1" -
C-5	CPB-4	CPB-3	-   1"
C-6	CPB-3	CPB-2	-   1"
C-7	CPB-4	CPB-II	1" -

MADISON - SITE PLAN



**TURPIN & RATAN**  
 ENGINEERING, INC.  
 CONSULTING ELECTRICAL ENGINEERS  
 4719 PALM AVENUE  
 LA MESA, CA 91941-5221  
 619 / 466 / 6224 FAX 466 / 6233  
 E-MAIL: ENGINEER@TREIRD.COM  
 TREI # 11121.00  
 E:JINA 02/05/13 1:07PM  
 0:11/11121.00/ACADPROJ/11121.00\_ET-0.3.dwg



MARK FORTIE, RCDD  
 REGISTERED COMMERCIAL DISTRIBUTION DESIGNER  
 BICSI  
 EXPIRES 12/31/11  
 Regis. No. 081432

CONSULTANT

APPROVALS

REVISIONS

DESCRIPTION

SITE PLAN

DATE

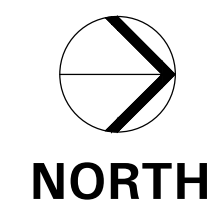
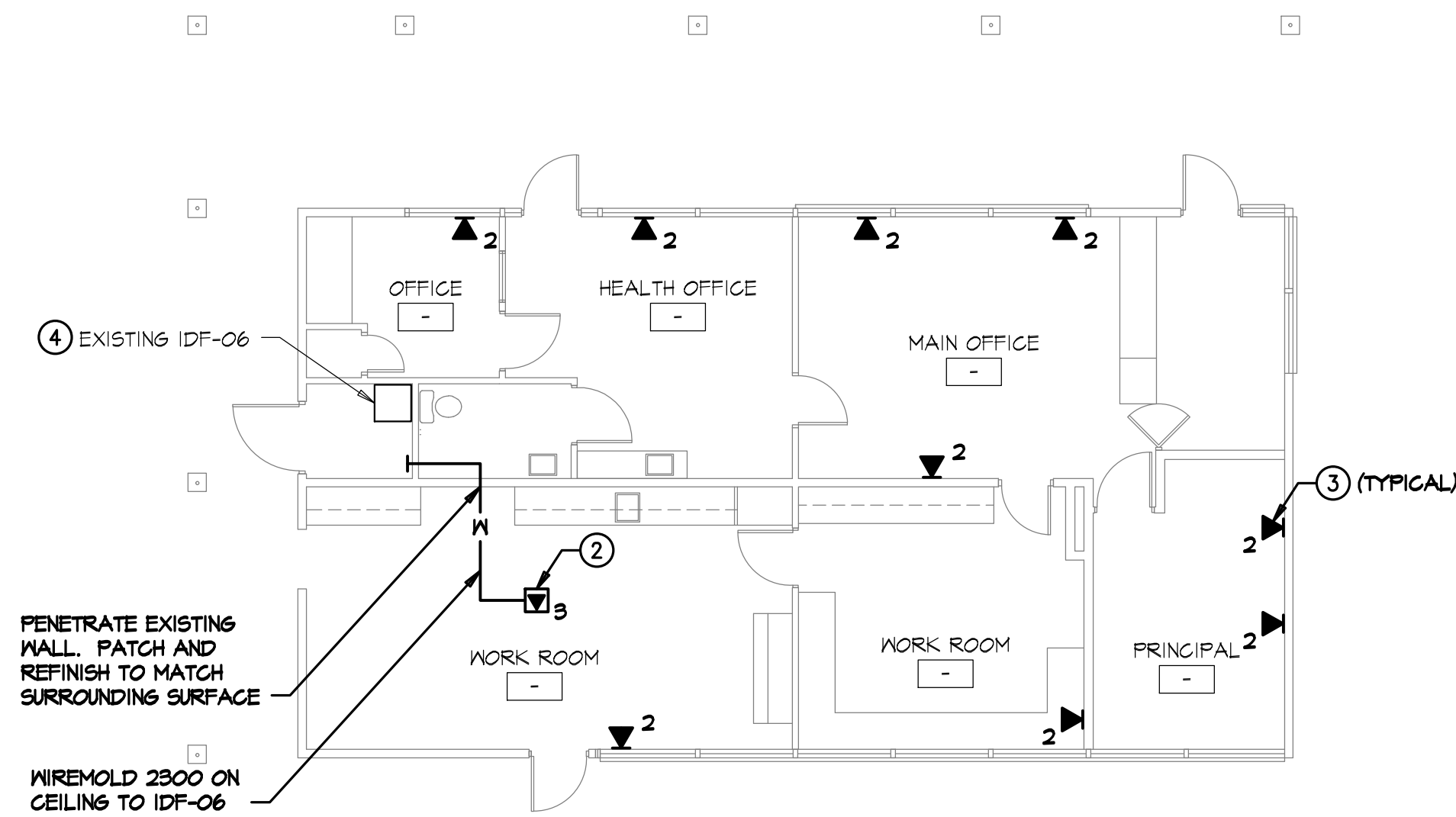
03/25/10

JOB #

11121.00

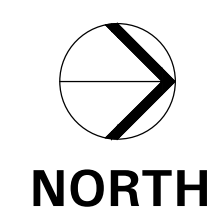
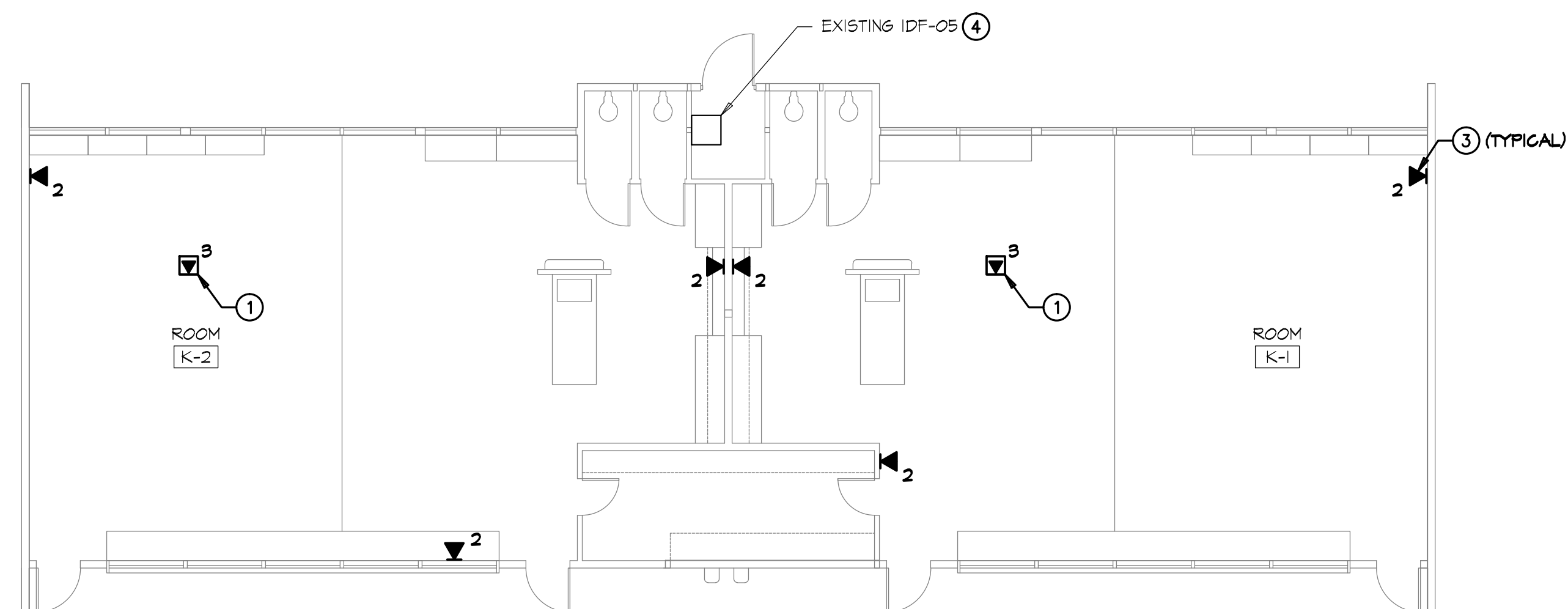
SHEET #

ET-0.3



1/8" = 1'-0"

**BUILDING 2 SIGNAL PLAN**



1/8" = 1'-0"

**BUILDING 1 SIGNAL PLAN**

**KEYNOTES**

- ① EXISTING WIRELESS ACCESS POINT LOCATION. PROVIDE TOTAL OF (3) CATEGORY 6 DATA CABLES, FACEPLATE, AND DATA JACKS AT EACH CEILING LOCATION. USE EXISTING PATHWAYS TO IDF. SEE DETAILS A/ET-5.3 & B/ET-5.3 FOR LABELING DETAILS.
- ② NEW WIRELESS ACCESS POINT LOCATION. PROVIDE (3) CATEGORY 6 DATA CABLES, FACEPLATE AND DATA JACKS AT EACH LOCATION.
- ③ DATA OUTLET. SEE DETAILS A/ET-5.3 & B/ET-5.3 FOR LABELING DETAILS.
- ④ SEE SHEETS ET-2.3 & ET-2.4 FOR IDF DETAILS.

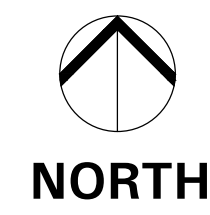
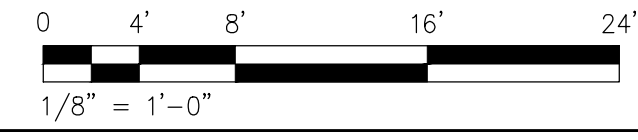
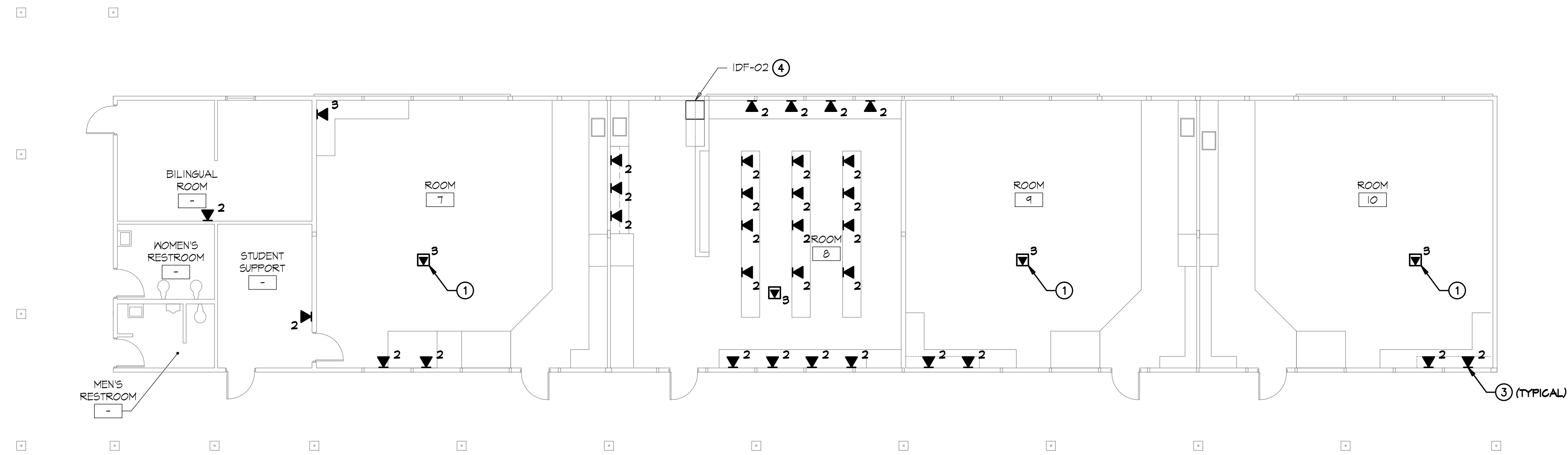
**GENERAL NOTES**

1. VERIFY ALL EXISTING DATA OUTLET LOCATIONS. SOME LOCATIONS MAY NOT BE SHOWN ON PLANS.
2. EXISTING COPPER HORIZONTAL DATA CABLES TO BE REMOVED AND REPLACED WITH CATEGORY 6 DATA CABLE.
3. EXISTING DATA JACKS TO BE REMOVED AND REPLACED WITH CATEGORY 6 DATA JACKS. PROVIDE NEW FACEPLATES FOR DATA OUTLETS NOT MOUNTED IN SURFACE RACEWAY.
4. USE EXISTING PATHWAYS TO IDF. PROVIDE "J-HOOKS" ABOVE DROP CEILINGS EVERY 4'-0" O.C. FOR CABLES NOT SUPPORTED BY CABLE TRAY OR IN CONDUIT.
5. WHERE VOICE AND DATA JACKS ARE COMBINED WITHIN A SHARED FACEPLATE, RE-INSTALL VOICE JACK IN NEW SHARED FACEPLATE.

**TURPIN & RATTAN**  
ENGINEERING, INC.  
CONSULTING ELECTRICAL ENGINEERS  
4719 PALM AVENUE  
LA MESA, CA 91941-5221  
619 / 466 / 6224 FAX 466 / 6233  
E-MAIL: ENGINEER@TREID.COM

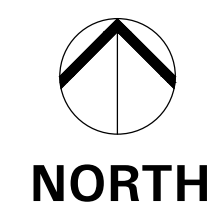
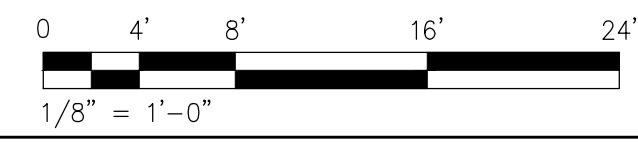
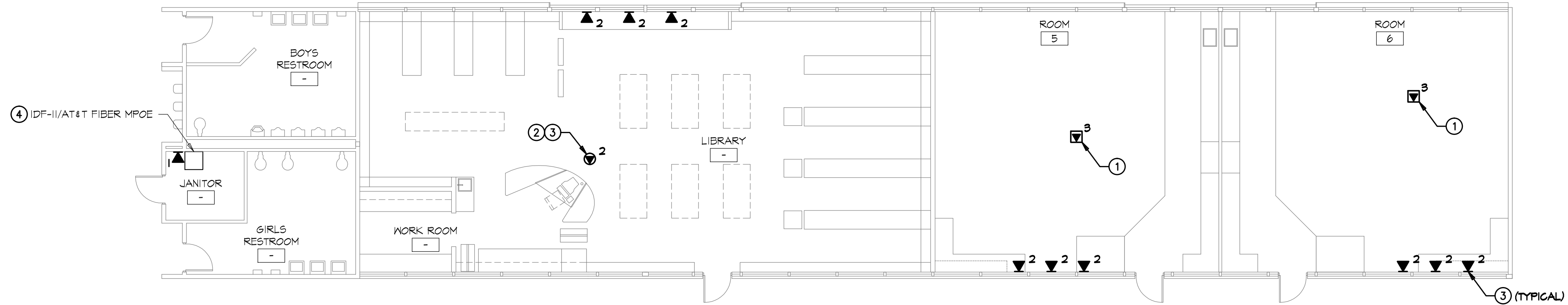


TREI # 11121.00  
E:\JINA 02/05/13 - 1:07PM  
03/11/13/1121.DD\CAD\PROJ\11121.00\_ET-1.1.dwg  
02/05/13



1/8" = 1'-0"

**BUILDING 4 - SIGNAL PLAN**



1/8" = 1'-0"

**BUILDING 3 - SIGNAL PLAN**

**KEYNOTES**

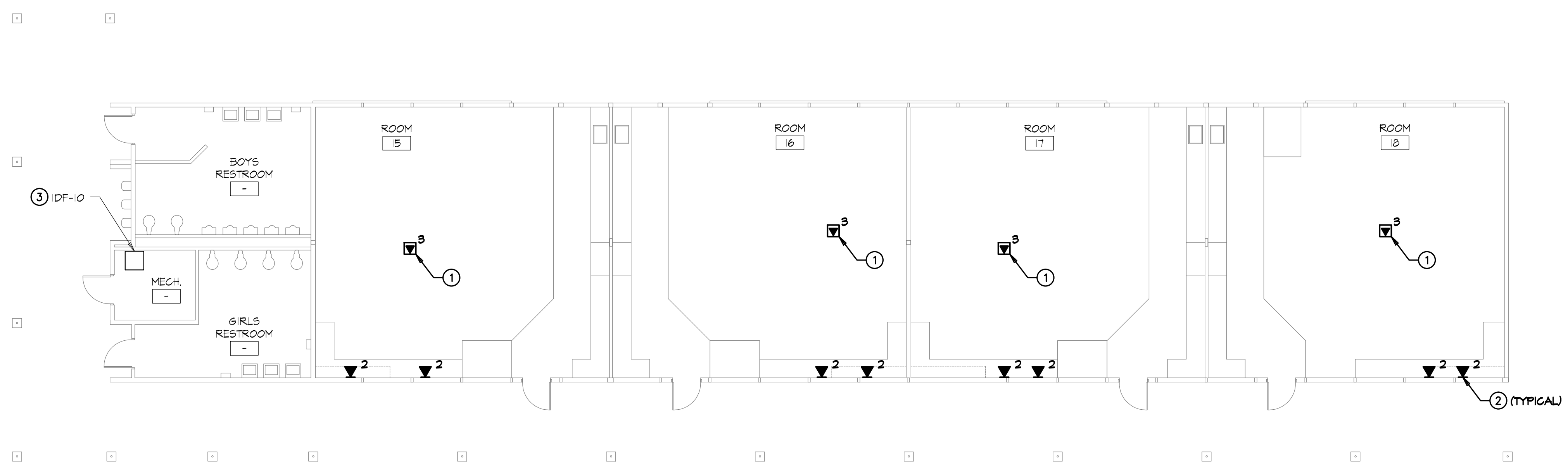
- ① EXISTING WIRELESS ACCESS POINT LOCATION. PROVIDE TOTAL OF (3) CATEGORY 6 DATA CABLES, FACEPLATE, AND DATA JACKS AT EACH CEILING LOCATION. USE EXISTING PATHWAYS TO IDF. SEE DETAILS A/ET-5.3 & B/ET-5.3 FOR LABELING DETAILS.
- ② FLOOR MOUNTED DATA OUTLET.
- ③ DATA OUTLET. SEE DETAILS A/ET-5.3 & B/ET-5.3 FOR LABELING DETAILS.
- ④ SEE SHEETS ET-2.3 & ET-2.4 FOR IDF DETAILS.

**GENERAL NOTES**

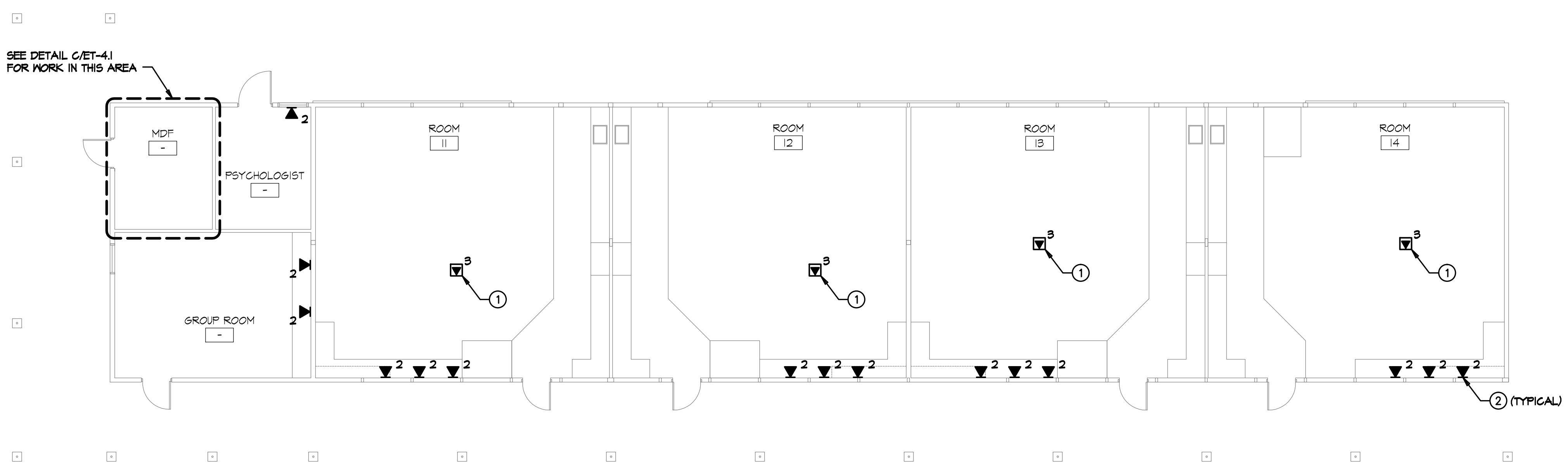
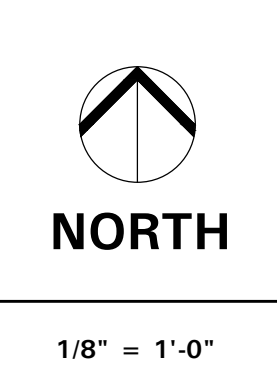
- 1. VERIFY ALL EXISTING DATA OUTLET LOCATIONS. SOME LOCATIONS MAY NOT BE SHOWN ON PLANS.
- 2. EXISTING COPPER HORIZONTAL DATA CABLES TO BE REMOVED AND REPLACED WITH CATEGORY 6 DATA CABLE.
- 3. EXISTING DATA JACKS TO BE REMOVED AND REPLACED WITH CATEGORY 6 DATA JACKS. PROVIDE NEW FACEPLATES FOR DATA OUTLETS NOT MOUNTED IN SURFACE RACEWAY.
- 4. USE EXISTING PATHWAYS TO IDF. PROVIDE "J-HOOKS" ABOVE DROP CEILING EVERY 4'-0" O.C. FOR CABLES NOT SUPPORTED BY CABLE TRAY OR IN CONDUIT.
- 5. WHERE VOICE AND DATA JACKS ARE COMBINED WITHIN A SHARED FACEPLATE, RE-INSTALL VOICE JACK IN NEW SHARED FACEPLATE.

**TURPIN & RATTAN**  
ENGINEERING, INC.  
CONSULTING ELECTRICAL ENGINEERS  
4719 PALM AVENUE  
LA MESA, CA 91941-5221  
619 / 466 / 6224 FAX 466 / 6233  
E-MAIL: ENGINEER@TRERD.COM  
TREI # 11121.00  
EJIRA 02/05/13 - 1:10PM  
03/11/1121.DDIACADPROJ11121.00\_ET-1.2.dwg

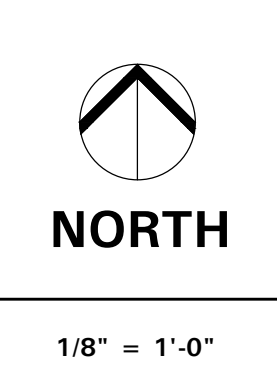
MARK FORTIE, RCDD  
REGISTERED COMMERCIAL DESIGNER  
BICSI  
EXPIRES 12/31/11  
Regis. No. 081432



**BUILDING 6 - SIGNAL PLAN**



**BUILDING 5 - SIGNAL PLAN**



**KEYNOTES**

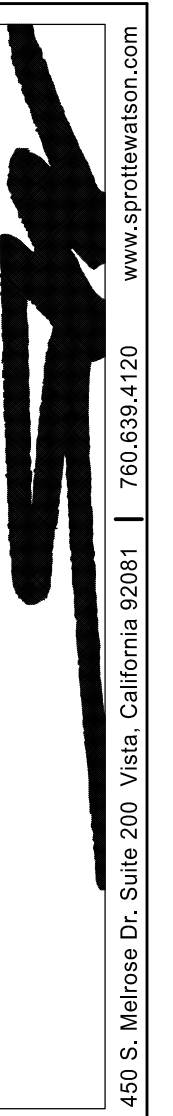
- ① EXISTING WIRELESS ACCESS POINT LOCATION. PROVIDE TOTAL OF (3) CATEGORY 6 DATA CABLES, FACEPLATE, AND DATA JACKS AT EACH CEILING LOCATION. USE EXISTING PATHWAYS TO IDF. SEE DETAILS A/ET-5.3 & B/ET-5.3 FOR LABELING DETAILS.
- ② DATA OUTLET. SEE DETAILS A/ET-5.3 & B/ET-5.3 FOR LABELING DETAILS.
- ③ SEE SHEETS ET-2.3 & ET-2.4 FOR IDF DETAILS.

**GENERAL NOTES**

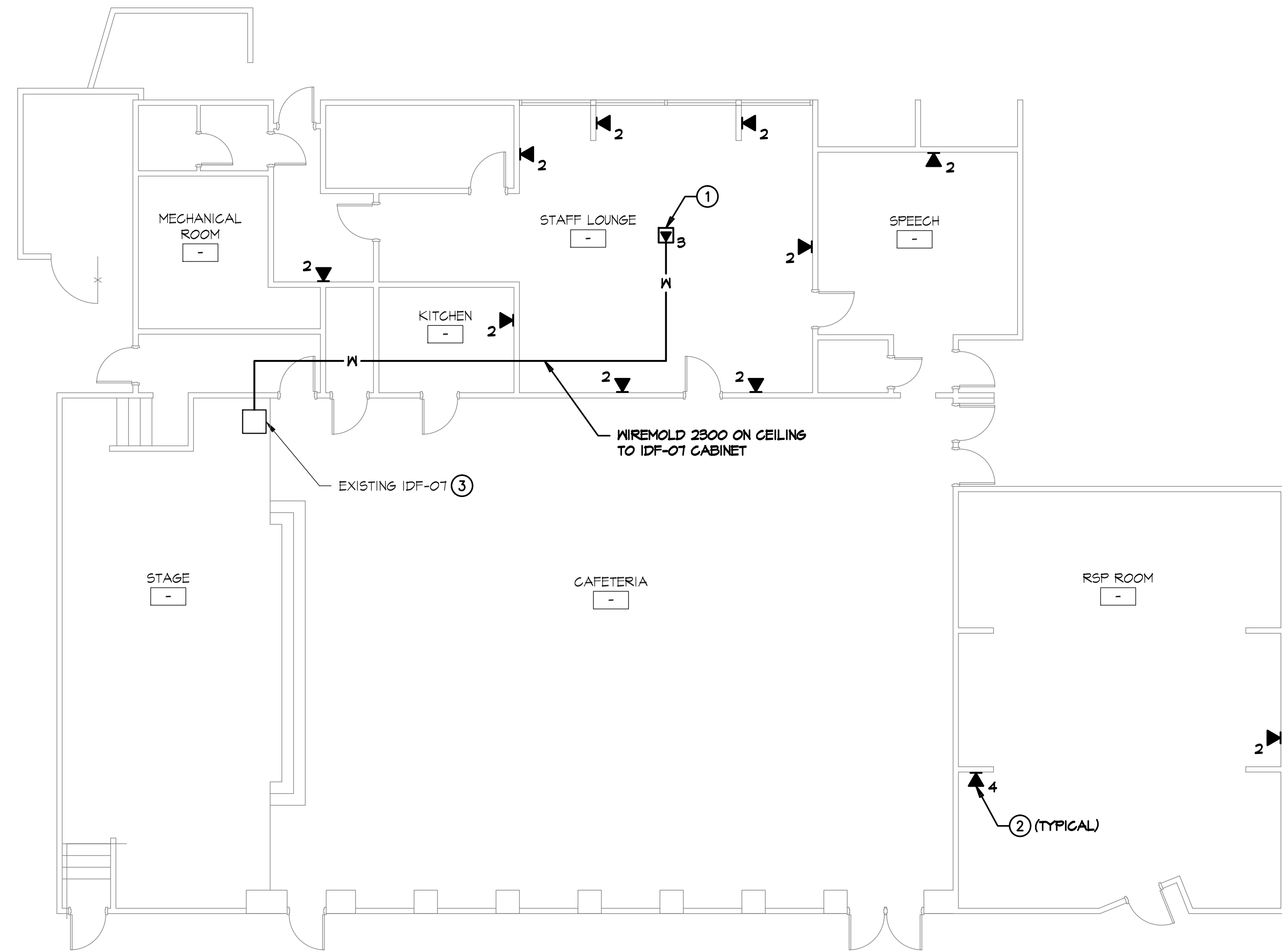
- 1. VERIFY ALL EXISTING DATA OUTLET LOCATIONS. SOME LOCATIONS MAY NOT BE SHOWN ON PLANS.
- 2. EXISTING COPPER HORIZONTAL DATA CABLES TO BE REMOVED AND REPLACED WITH CATEGORY 6 DATA CABLE.
- 3. EXISTING DATA JACKS TO BE REMOVED AND REPLACED WITH CATEGORY 6 DATA JACKS. PROVIDE NEW FACEPLATES FOR DATA OUTLETS NOT MOUNTED IN SURFACE RACEWAY.
- 4. USE EXISTING PATHWAYS TO IDF. PROVIDE "J-HOOKS" ABOVE DROP CEILING EVERY 4'-0" O.C. FOR CABLES NOT SUPPORTED BY CABLE TRAY OR IN CONDUIT.
- 5. WHERE VOICE AND DATA JACKS ARE COMBINED WITHIN A SHARED FACEPLATE, RE-INSTALL VOICE JACK IN NEW SHARED FACEPLATE.

**TURPIN & RATAN**  
ENGINEERING, INC.  
CONSULTING ELECTRICAL ENGINEERS  
4719 PALM AVENUE  
LA MESA, CA 91941-5221  
619 / 466 / 6224 FAX 466 / 6233  
E-MAIL: ENGINEER@TREID.COM  
TREI # 11121.00  
E:JINA 02/05/13 - 1:10PM  
0:11:11:1121.DOC\ACAD\PROJ\11121.00\_ET-1.3.dwg

MARK FORTIE, RCDD  
REGISTERED COMMERCIAL VOICE DISTRIBUTION DESIGNER  
BICSI  
EXPIRES 12/31/11  
Regis. No. 081432



469 S. Main Street, Suite 200 - Vista, California 92081 | 760.639.4129  
www.sprottewatson.com

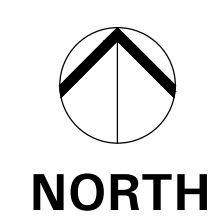
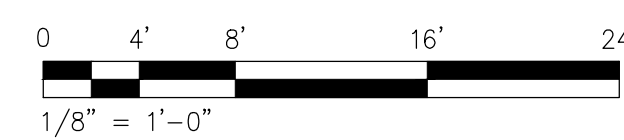


**KEYNOTES**

- ① NEW WIRELESS ACCESS POINT LOCATION. PROVIDE (3) CATEGORY 6 DATA CABLES, FACEPLATE AND DATA JACKS AT EACH LOCATION.
- ② DATA OUTLET. SEE DETAILS A/ET-5.3 & B/ET-5.3 FOR LABELING DETAILS.
- ③ SEE SHEETS ET-2.3 & ET-2.4 FOR IDF DETAILS.

**GENERAL NOTES**

- 1. VERIFY ALL EXISTING DATA OUTLET LOCATIONS. SOME LOCATIONS MAY NOT BE SHOWN ON PLANS.
- 2. EXISTING COPPER HORIZONTAL DATA CABLES TO BE REMOVED AND REPLACED WITH CATEGORY 6 DATA CABLE.
- 3. EXISTING DATA JACKS TO BE REMOVED AND REPLACED WITH CATEGORY 6 DATA JACKS. PROVIDE NEW FACEPLATES FOR DATA OUTLETS NOT MOUNTED IN SURFACE RACEWAY.
- 4. USE EXISTING PATHWAYS TO IDF. PROVIDE "J-HOOKS" ABOVE DROP CEILINGS EVERY 4'-0" O.C. FOR CABLES NOT SUPPORTED BY CABLE TRAY OR IN CONDUIT.
- 5. WHERE VOICE AND DATA JACKS ARE COMBINED WITHIN A SHARED FACEPLATE, RE-INSTALL VOICE JACK IN NEW SHARED FACEPLATE.



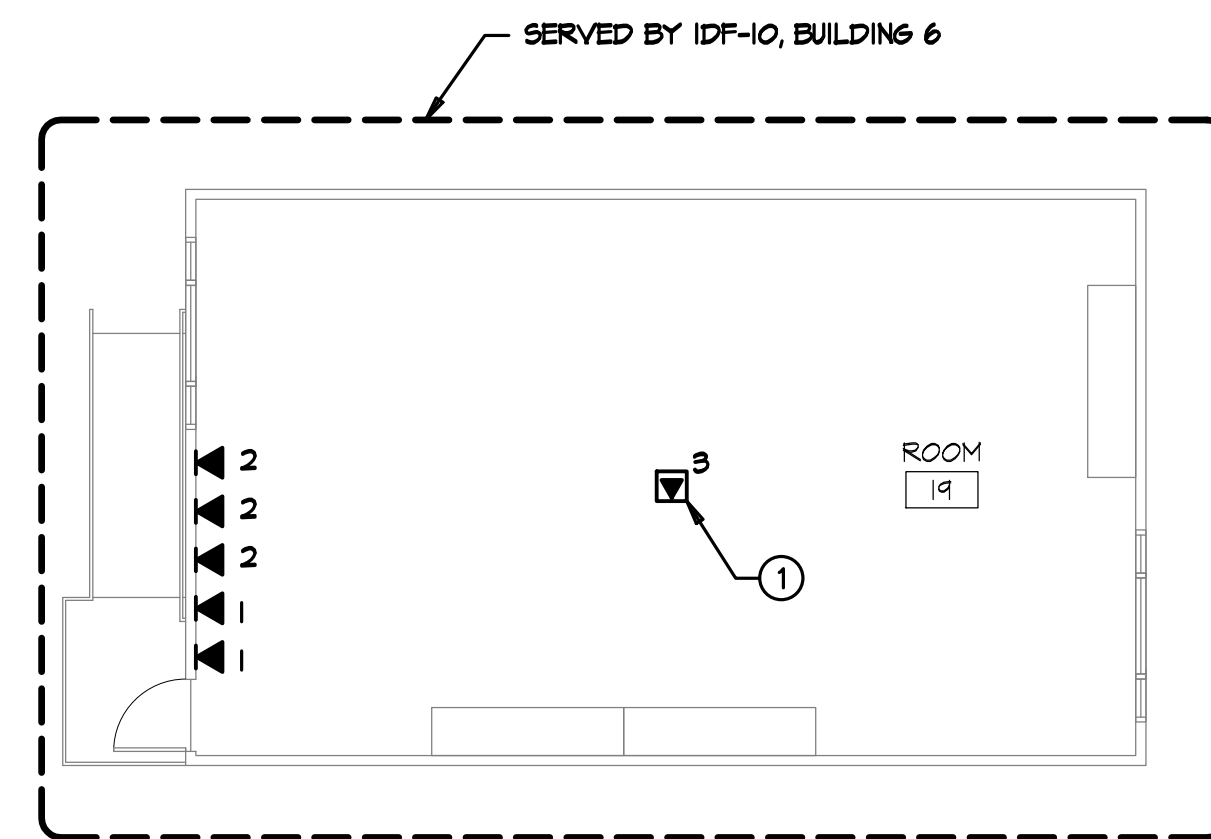
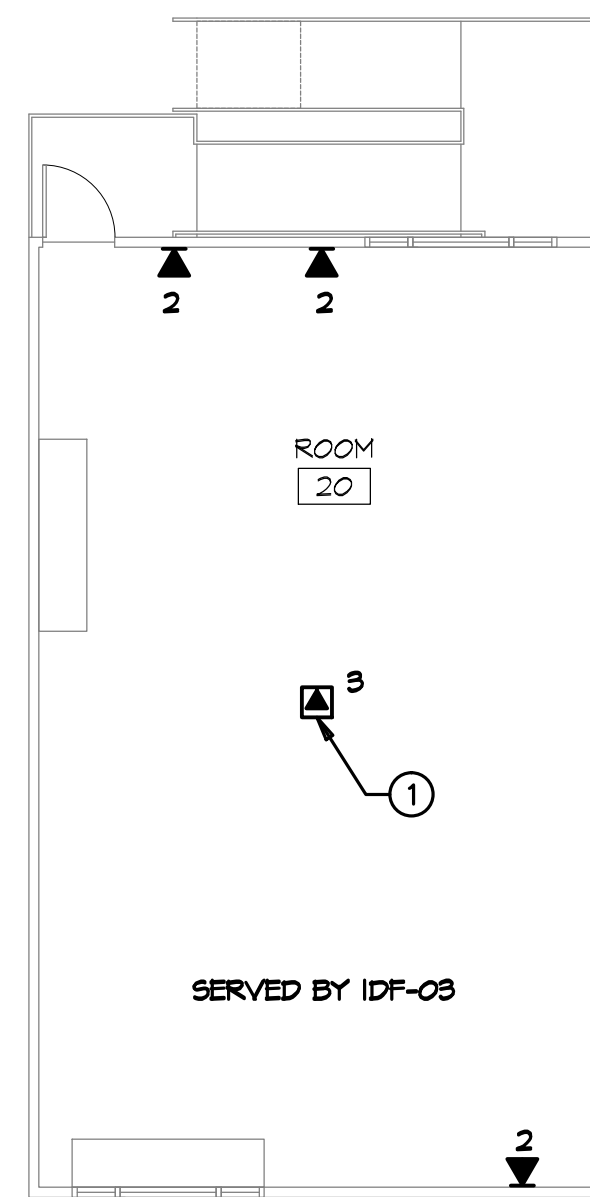
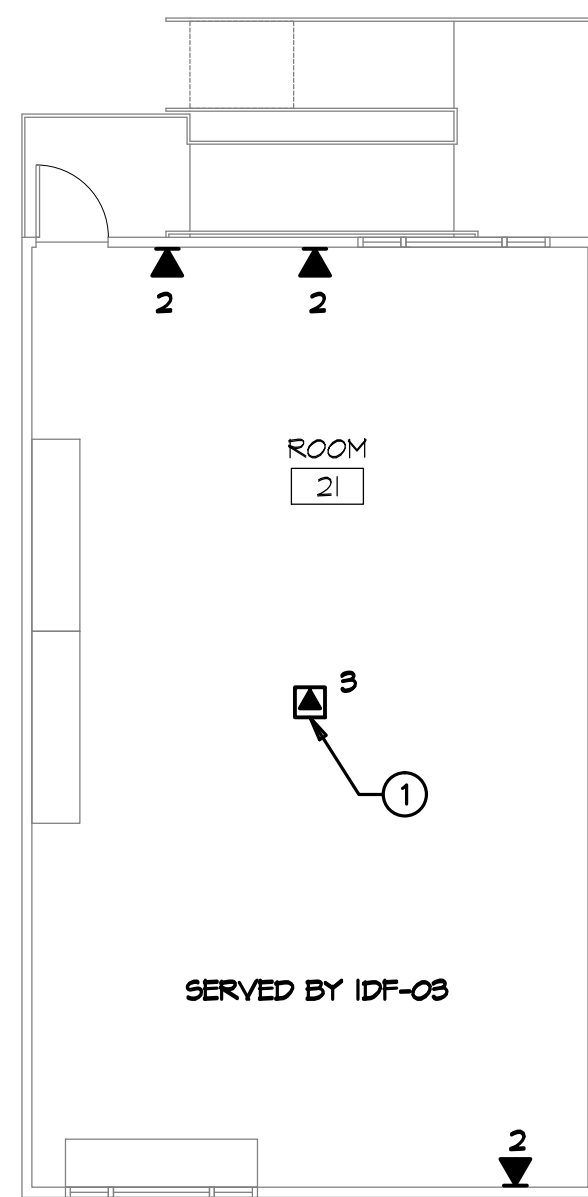
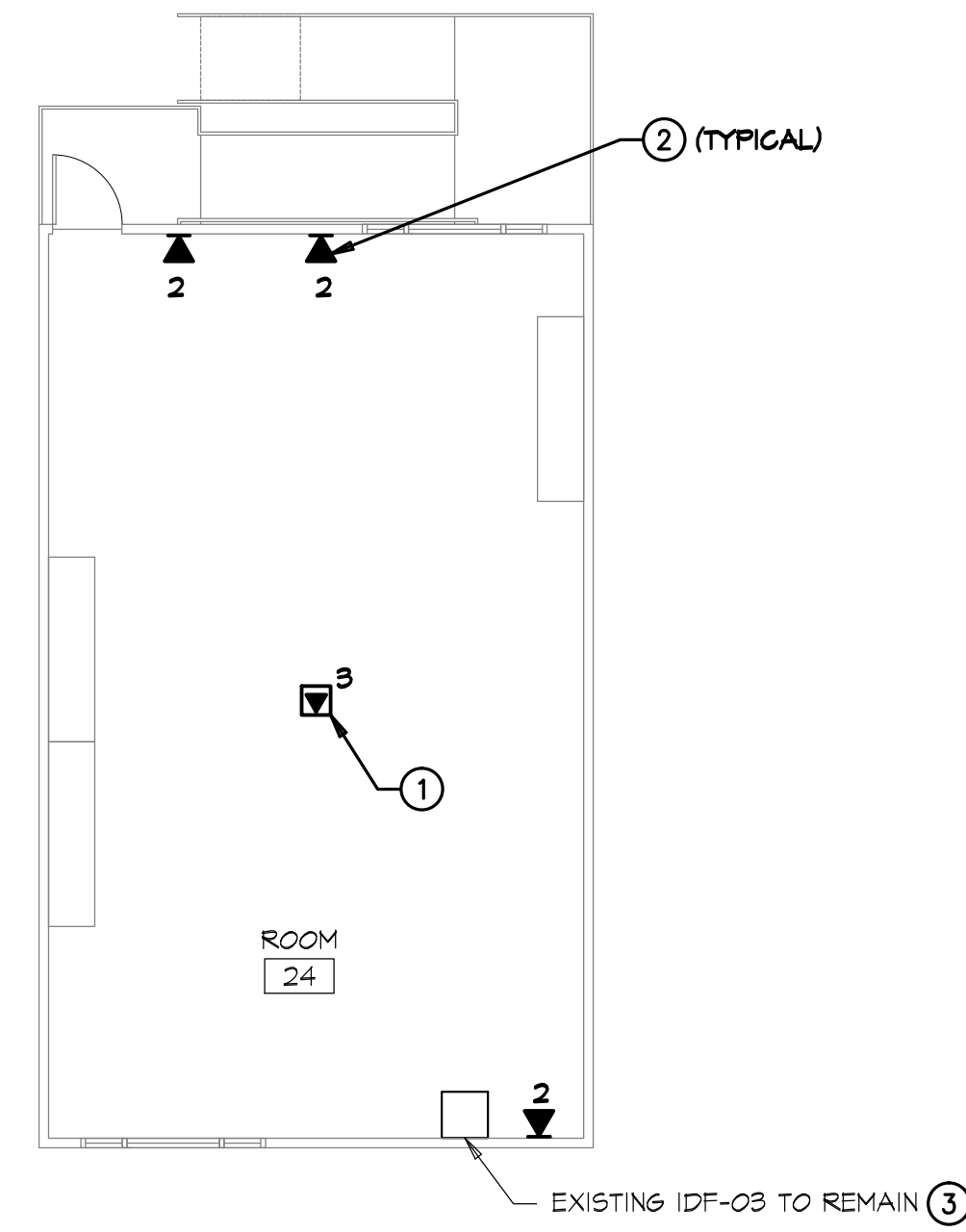
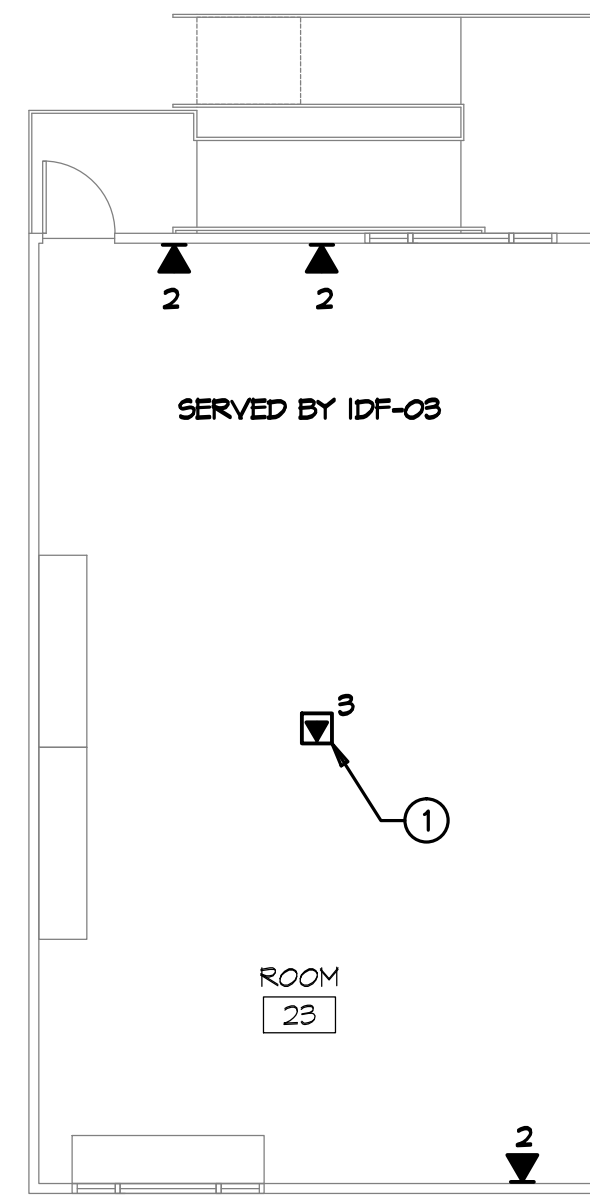
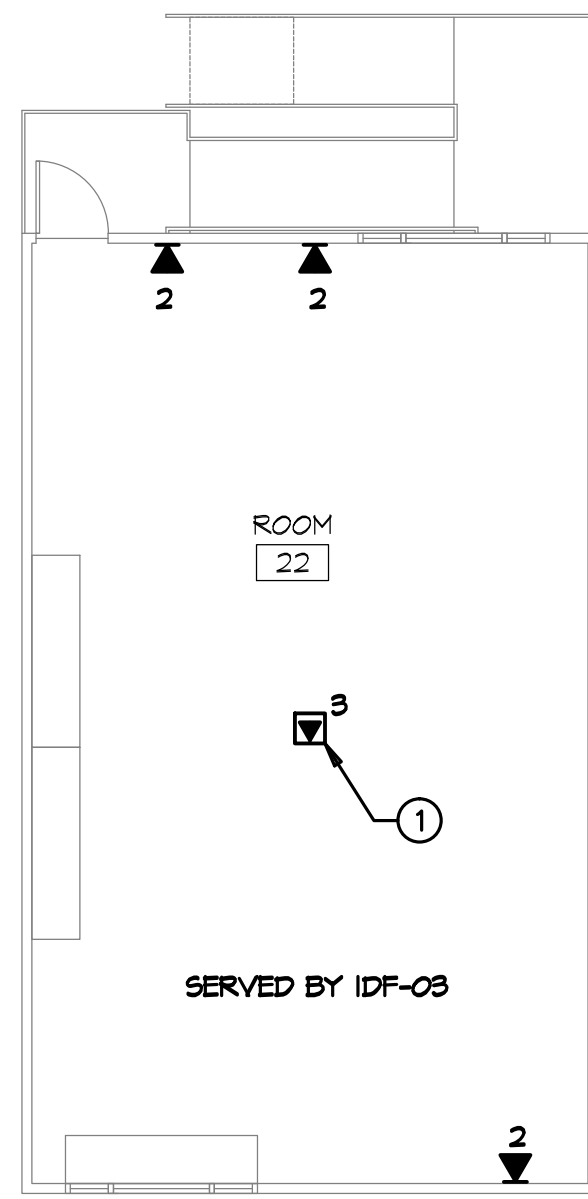
1/8" = 1'-0"

**TURPIN & RATTAN**  
ENGINEERING, INC.  
CONSULTING ELECTRICAL ENGINEERS  
4719 PALM AVENUE  
LA MESA, CA 91941-5221  
619 / 466 / 6224 FAX 466 / 6233  
E-MAIL: ENGINEER@TRERD.COM



TREI # 11121.00  
E:JINA 02/05/13 - 1:12PM  
S:\11\1121.00\ACAD\PROJ\11121.00\_ET-1.4.dwg 02/05/13

MARK FORTIE, RCDD  
REG. COMMERCIAL VENDOR  
BICSI  
DISTRIBUTION DESIGNER  
EXPIRES 12/31/11  
Regis. No. 081432




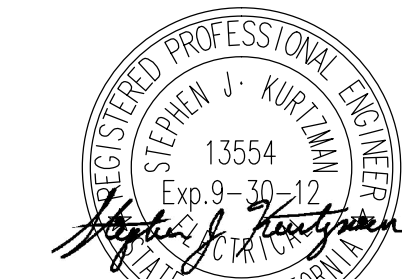
**KEYNOTES**

- ① EXISTING WIRELESS ACCESS POINT LOCATION. PROVIDE TOTAL OF (3) CATEGORY 6 DATA CABLES, FACEPLATE, AND DATA JACKS AT EACH CEILING LOCATION. USE EXISTING PATHWAYS TO IDF. SEE DETAILS A/ET-5.3 & B/ET-5.3 FOR LABELING DETAILS.
- ② DATA OUTLET. SEE DETAILS A/ET-5.3 & B/ET-5.3 FOR LABELING DETAILS.
- ③ SEE SHEETS ET-2.3 & ET-2.4 FOR IDF DETAILS.

**GENERAL NOTES**

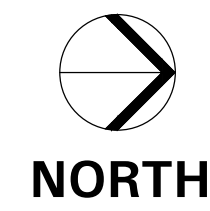
- 1. VERIFY ALL EXISTING DATA OUTLET LOCATIONS. SOME LOCATIONS MAY NOT BE SHOWN ON PLANS.
- 2. EXISTING COPPER HORIZONTAL DATA CABLES TO BE REMOVED AND REPLACED WITH CATEGORY 6 DATA CABLE.
- 3. EXISTING DATA JACKS TO BE REMOVED AND REPLACED WITH CATEGORY 6 DATA JACKS. PROVIDE NEW FACEPLATES FOR DATA OUTLETS NOT MOUNTED IN SURFACE RACEWAY.
- 4. USE EXISTING PATHWAYS TO IDF. PROVIDE 'J-HOOKS' ABOVE DROP CEILINGS EVERY 4'-0" O.C. FOR CABLES NOT SUPPORTED BY CABLE TRAY OR IN CONDUIT.
- 5. WHERE VOICE AND DATA JACKS ARE COMBINED WITHIN A SHARED FACEPLATE, RE-INSTALL VOICE JACK IN NEW SHARED FACEPLATE.


**TURPIN & RATTAN**  
 ENGINEERING, INC.  
 CONSULTING ELECTRICAL ENGINEERS  
 4719 PALM AVENUE  
 LA MESA, CA 91941-5221  
 619 / 466 / 6224 FAX 466 / 6233  
 E-MAIL: ENGINEER@TREISD.COM


 REGISTERED PROFESSIONAL ENGINEER  
 STEPHEN J. KURPIAN  
 13554  
 Exp. 9-30-12

MARK FORTIE, RCDD  

 REGISTERED COMMERCIAL VOICE  
 DISTRIBUTION DESIGNER  
**BICSI**

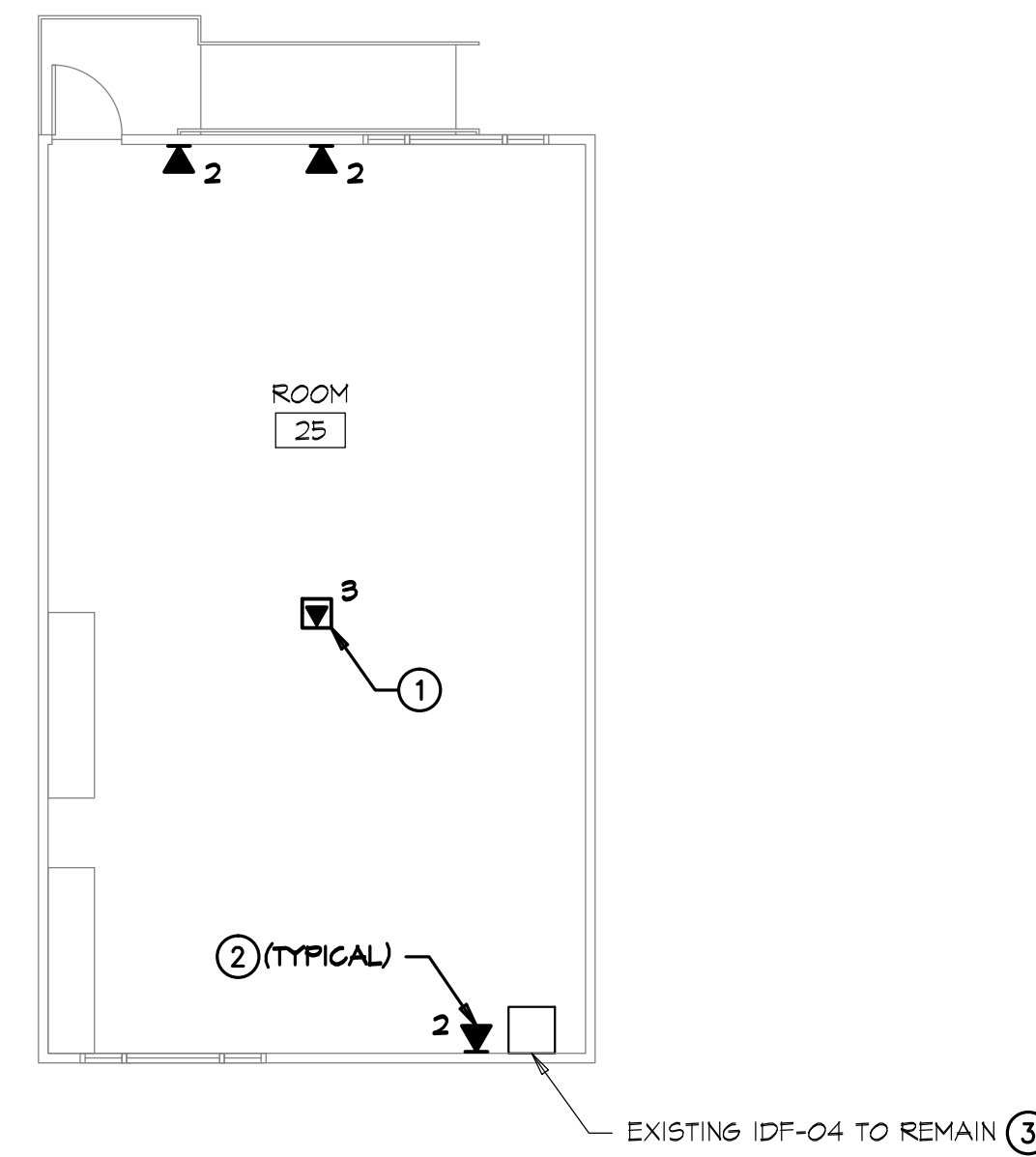
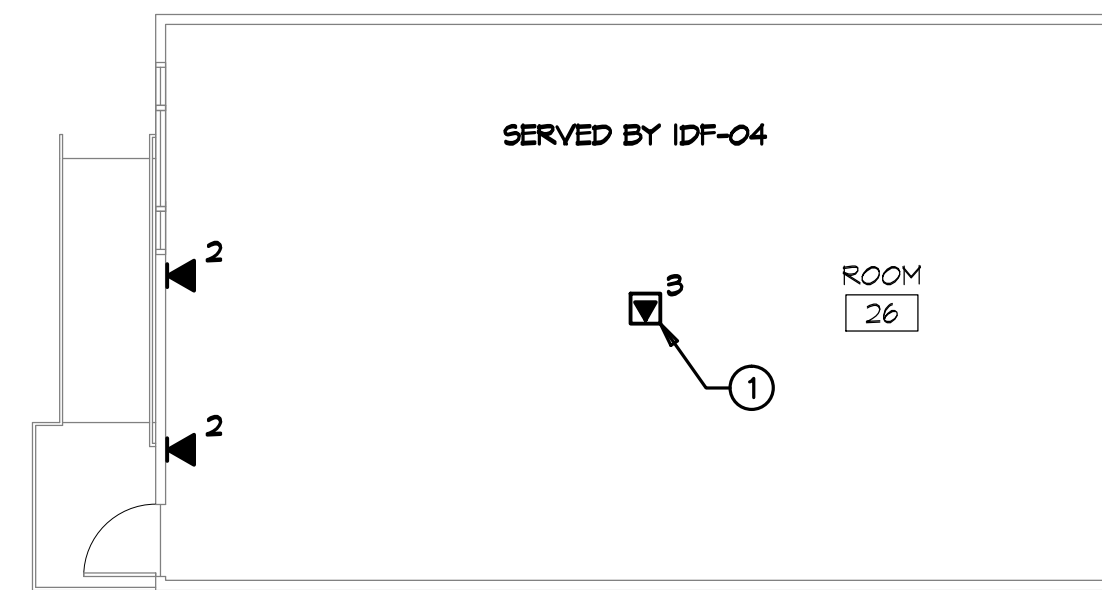
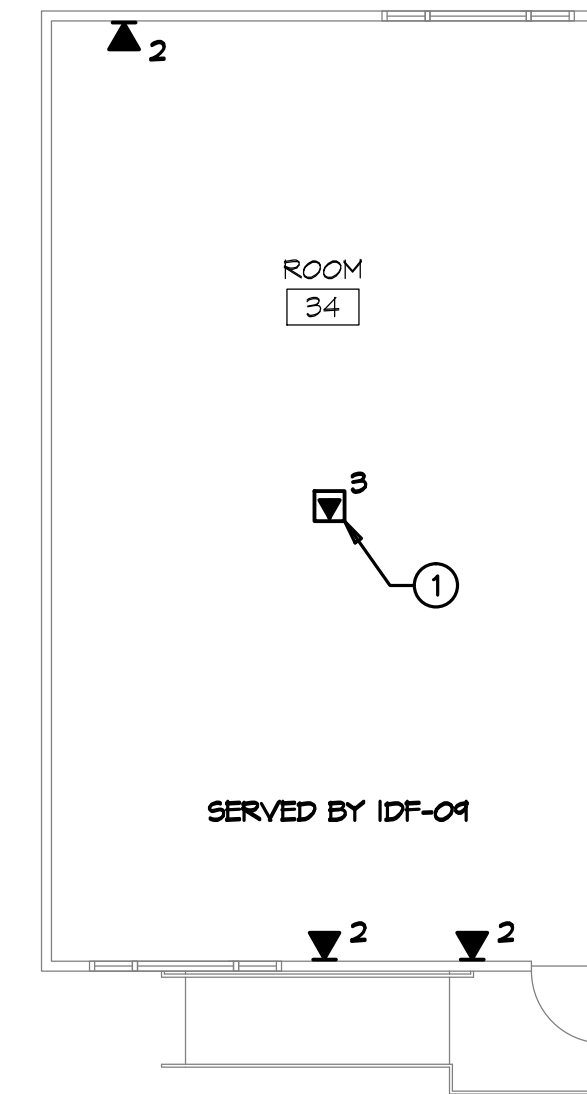
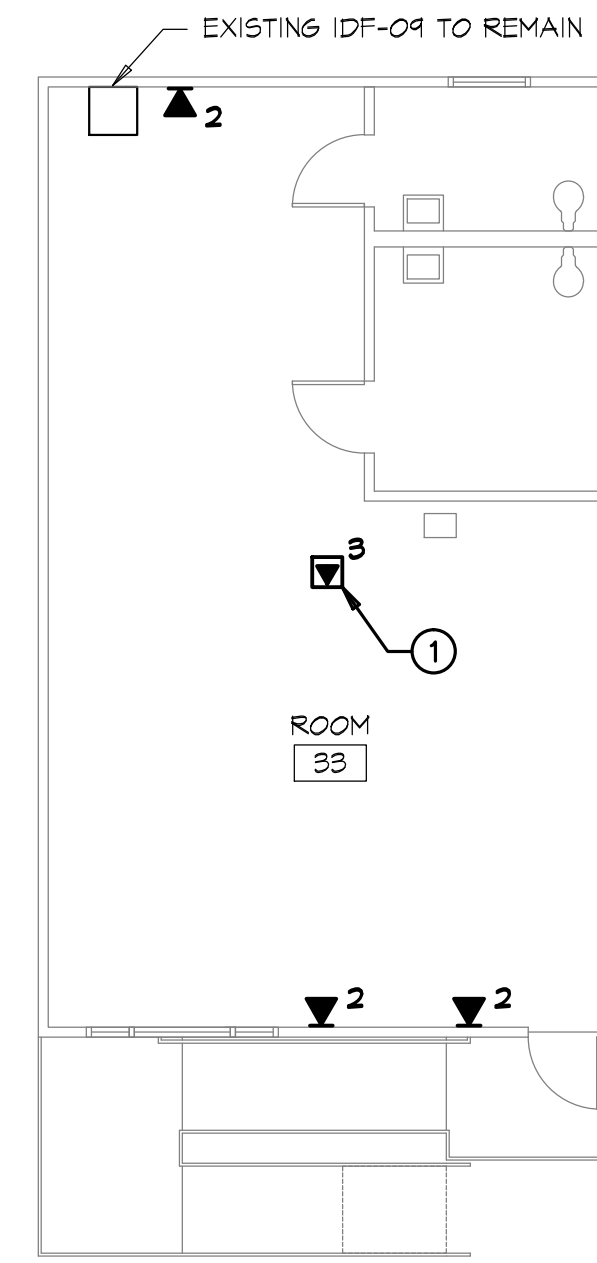
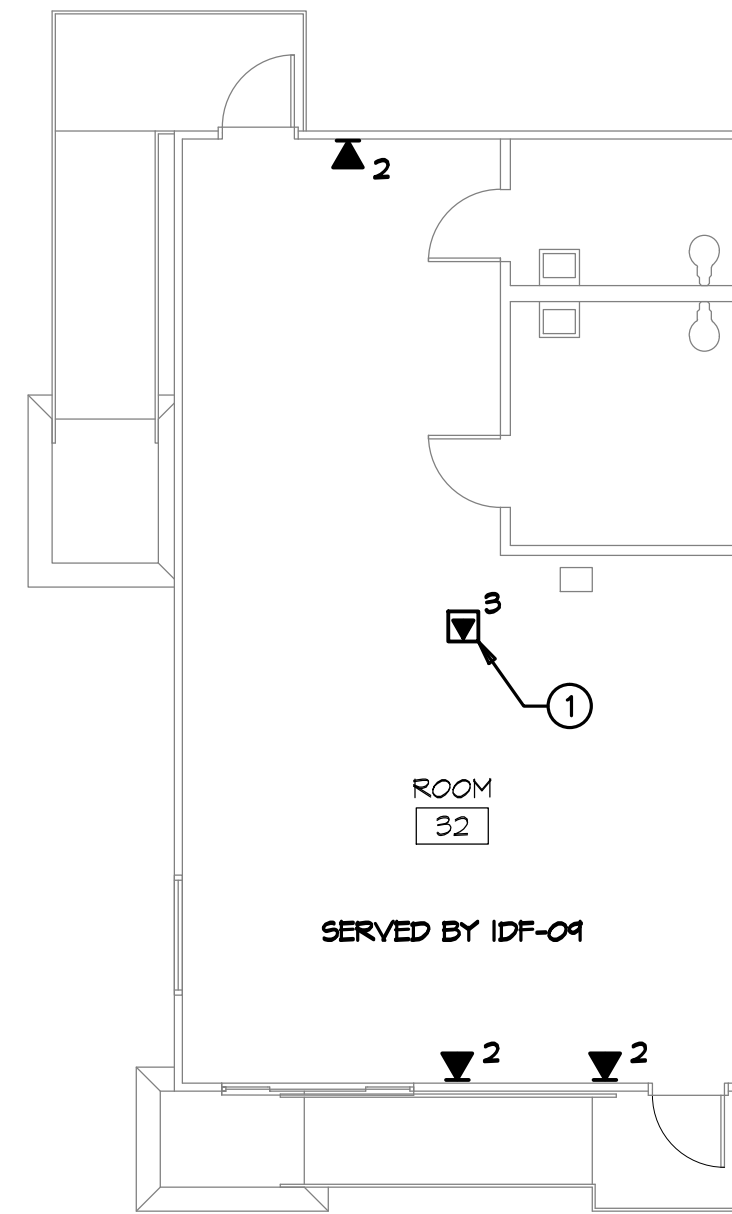


1/8" = 1'-0"

TREI # 11121.00  
 E:\JINA 02/05/13 - 1:13PM  
 03/11/11121.00\CAD\PROJ\11121.00\_ET-15.dwg

02/05/13

EXPIRES 12/31/11  
 Regis. No. 081432



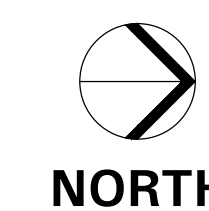
**KEYNOTES**

- ① EXISTING WIRELESS ACCESS POINT LOCATION. PROVIDE TOTAL OF (3) CATEGORY 6 DATA CABLES, FACEPLATE, AND DATA JACKS AT EACH CEILING LOCATION. USE EXISTING PATHWAYS TO IDF. SEE DETAILS A/ET-5.3 & B/ET-5.3 FOR LABELING DETAILS.
- ② DATA OUTLET. SEE DETAILS A/ET-5.3 & B/ET-5.3 FOR LABELING DETAILS.
- ③ SEE SHEETS ET-2.3 & ET-2.4 FOR IDF DETAILS.

**GENERAL NOTES**

1. VERIFY ALL EXISTING DATA OUTLET LOCATIONS. SOME LOCATIONS MAY NOT BE SHOWN ON PLANS.
2. EXISTING COPPER HORIZONTAL DATA CABLES TO BE REMOVED AND REPLACED WITH CATEGORY 6 DATA CABLE.
3. EXISTING DATA JACKS TO BE REMOVED AND REPLACED WITH CATEGORY 6 DATA JACKS. PROVIDE NEW FACEPLATES FOR DATA OUTLETS NOT MOUNTED IN SURFACE RACEWAY.
4. USE EXISTING PATHWAYS TO IDF. PROVIDE 'J-HOOKS' ABOVE DROP CEILINGS EVERY 4'-0" O.C. FOR CABLES NOT SUPPORTED BY CABLE TRAY OR IN CONDUIT.
5. WHERE VOICE AND DATA JACKS ARE COMBINED WITHIN A SHARED FACEPLATE, RE-INSTALL VOICE JACK IN NEW SHARED FACEPLATE.

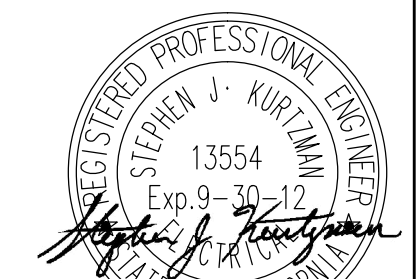
**PORTABLES 25,26,32,33,34 - SIGNAL PLANS**



1/8" = 1'-0"

**TURPIN & RATTAN**  
 ENGINEERING, INC.  
 CONSULTING ELECTRICAL ENGINEERS  
 4719 PALM AVENUE  
 LA MESA, CA 91941-5221  
 619 / 466 / 6224 FAX 466 / 6233  
 E-MAIL: ENGINEER@TREIRD.COM

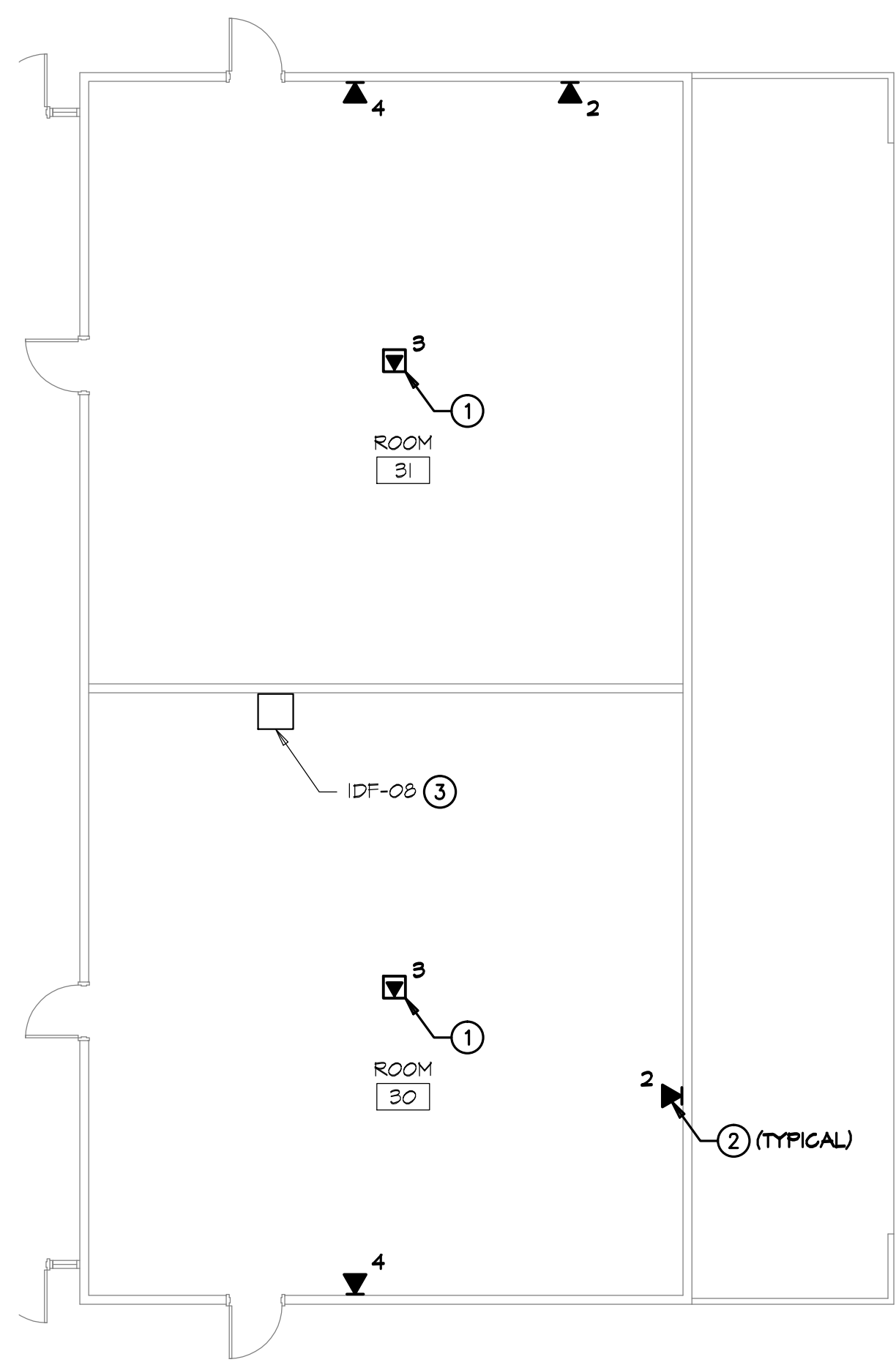
TREI # 11121.00  
 E:\JINA 02/05/13 - 1:14PM  
 03/11/11/121.DDI\CAD\PROJ\11121.00\_ET-1.6.dwg



02/05/13



MARK FORTIE, RCDD  
 EXPIRES 12/31/11  
 Regis. No. 081432

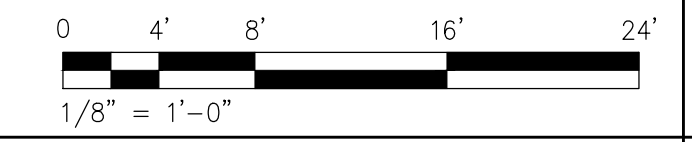


**KEYNOTES**

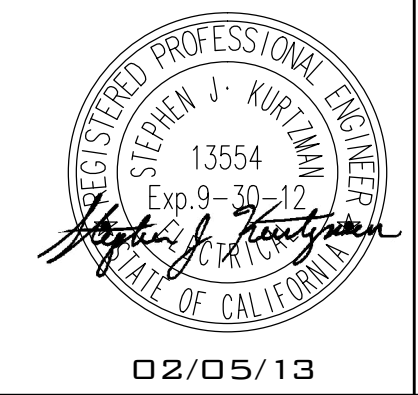
- ① NEW WIRELESS ACCESS POINT LOCATION. PROVIDE (3) CATEGORY 6 DATA CABLES, FACEPLATE AND DATA JACKS AT EACH LOCATION.
- ② DATA OUTLET. SEE DETAILS A/ET-5.3 & B/ET-5.3 FOR LABELING DETAILS.
- ③ SEE SHEETS ET-2.3 & ET-2.4 FOR IDF DETAILS.

**GENERAL NOTES**

- 1. VERIFY ALL EXISTING DATA OUTLET LOCATIONS. SOME LOCATIONS MAY NOT BE SHOWN ON PLANS.
- 2. EXISTING COPPER HORIZONTAL DATA CABLES TO BE REMOVED AND REPLACED WITH CATEGORY 6 DATA CABLE.
- 3. EXISTING DATA JACKS TO BE REMOVED AND REPLACED WITH CATEGORY 6 DATA JACKS. PROVIDE NEW FACEPLATES FOR DATA OUTLETS NOT MOUNTED IN SURFACE RACEWAY.
- 4. USE EXISTING PATHWAYS TO IDF. PROVIDE 'J-HOOKS' ABOVE DROP CEILINGS EVERY 4'-0" O.C. FOR CABLES NOT SUPPORTED BY CABLE TRAY OR IN CONDUIT.
- 5. WHERE VOICE AND DATA JACKS ARE COMBINED WITHIN A SHARED FACEPLATE, RE-INSTALL VOICE JACK IN NEW SHARED FACEPLATE.



**TURPIN & RATTAN**  
ENGINEERING, INC.  
CONSULTING ELECTRICAL ENGINEERS  
4719 PALM AVENUE  
LA MESA, CA 91941-5221  
619 / 466 / 6224 FAX 466 / 6233  
E-MAIL: ENGINEER@TRERID.COM  
TREI # 11121.00



MARK FORTIE, RCDD  
REGISTERED COMMERCIAL VOICE DISTRIBUTION DESIGNER  
**BICSI**  
EXPIRES 12/31/11  
Regis. No. 081432

E:\JINA 02/05/13 - 1:14PM 02/05/13  
03/11/11121.00\CAD\PROJ\11121.00\_ET-1.7.dwg 2/05/13 13:14:45

SPROTTE WATSON  
ARCHITECTURE PLANNING  
450 S. Main Street, Suite 200 - Vista, California 92081 | 760.639.4120  
www.sprottewatson.com

TECHNOLOGY UPGRADE  
MADISON ELEMENTARY SCHOOL  
CAJON VALLEY UNION SCHOOL DISTRICT

CONSULTANT

APPROVALS

REVISIONS

DESCRIPTION

ROOM 30 & 31  
SIGNAL PLANS

DATE

03/25/10

JOB #

11121.00

SHEET #

ET-17

**ROOM 30 & 31 - SIGNAL PLANS**