

# Financial Aid Night

# Welcome

## Scholarships Presentation

*Kandy Gailey, CCISD and CCHS Lead High School Counselor*

## General Financial Aid & FAFSA Presentation

*Margarita Lerma, Financial Aid Advisor*

*San Jacinto Community College, South Campus*



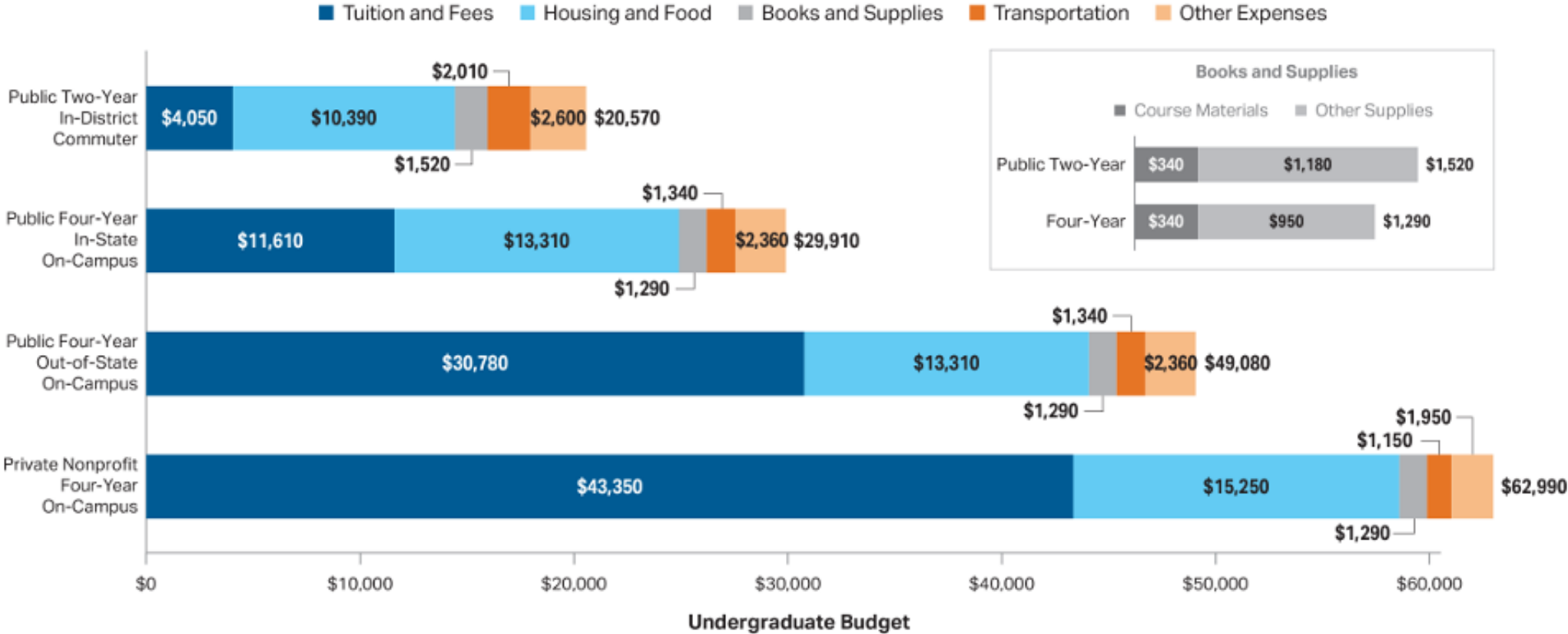
# Average Published Charges for Full-Time Undergraduates

	Sector					Carnegie Classification					
	Public Two-Year In-District	Public Four-Year In-State	Public Four-Year Out-of-State	Private Nonprofit Four-Year	For-Profit	Public Four-Year			Private Nonprofit Four-Year		
						Doctoral	Master's	Bachelor's	Doctoral	Master's	Bachelor's
<b>Tuition and Fees</b>											
2024-25	\$4,050	\$11,610	\$30,780	\$43,350	—	\$12,270	\$9,560	\$8,990	\$51,940	\$31,930	\$43,650
2023-24	\$3,950	\$11,310	\$29,840	\$41,740	\$16,030	\$11,950	\$9,290	\$8,830	\$49,860	\$30,840	\$42,150
\$ Change	\$100	\$300	\$940	\$1,610	—	\$320	\$270	\$160	\$2,080	\$1,090	\$1,500
% Change	2.5%	2.7%	3.2%	3.9%	—	2.7%	2.9%	1.8%	4.2%	3.5%	3.6%
<b>Housing and Food (Room and Board)</b>											
2024-25	\$10,390	\$13,310	\$13,310	\$15,250	—	\$13,450	\$11,760	\$11,740	\$17,540	\$14,260	\$14,120
2023-24	\$9,970	\$12,770	\$12,770	\$14,650	—	\$12,880	\$11,310	\$11,390	\$16,780	\$13,710	\$13,580
<b>Tuition and Fees and Housing and Food</b>											
2024-25	\$14,440	\$24,920	\$44,090	\$58,600	—	\$25,720	\$21,320	\$20,730	\$69,480	\$46,190	\$57,770
2023-24	\$13,920	\$24,080	\$42,610	\$56,390	—	\$24,830	\$20,600	\$20,220	\$66,640	\$44,550	\$55,730
<b>Percentage of Undergraduates Enrolled Full Time</b>											
Fall 2022	33%	80%		81%	69%	83%	72%	54%	87%	72%	85%



# Average Estimated Costs of College

Average Estimated Full-Time Undergraduate Budget (Enrollment-Weighted) by Sector, 2024-25



# What are Scholarships?

- Money is awarded to students to help pay for educational expenses.
- Scholarships may be offered by **schools, employers, individuals, private companies, communities, religious groups, and professional or social organizations.**
- Each scholarship might be available for 1 year only or renewable each year.
- Do not need to be repaid!

**ACHIEVE, CONTRIBUTE & LEAD WITH INTEGRITY**



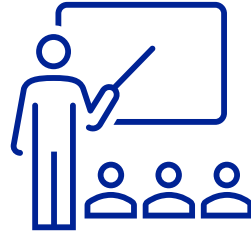
# Types of Scholarships



**1. Merit Based**



**2. Needs Based**



**3. Student Specific**



**4. Career Specific**



# Merit Based Scholarships



- Earned by meeting or exceeding certain standards set by the scholarship (GPA, SAT/ACT, etc.)
- Academic Achievement, Community Service, and Extracurricular Activities may be considered
- May be geared toward particular groups of people (for example, scholarships for military families)
- Special talents



# Merit Based Scholarship Examples




## Carr P. Collins Scholars Program

GEORGE AND MARY JOSEPHINE HAMMAN FOUNDATION

UT Dallas McDermott Scholars

## The Eugene McDermott Scholars Program

University of Houston  Clear Lake

## New Hawk Scholarship



# Needs Based Scholarships



- Based upon the student and family's financial record (may ask for income tax records)
- Usually requires applicants to complete the Federal Application for Federal Student Aid (FAFSA) or Texas Application for State Financial Aid (TASFA)

**Federal Student Aid**  
An OFFICE of the U.S. DEPARTMENT of EDUCATION




# Student Specific Scholarships

Applicants qualify initially by student-specific factors such as race, gender, religion, family and medical history, etc.

## THE NATIONAL SCHOLARSHIP DIRECTORY: BY FASTWEB



# Student Specific Scholarship Examples



**NATIONAL ITALIAN AMERICAN FOUNDATION**

[ABOUT](#) [JOIN](#) [EVENTS](#) [PROGRAMS](#)




TEXAS A&M UNIVERSITY  
Aggie One Stop

## Regents' Scholars Program



**JACL**  
Japanese American Citizens League

Don't mess with Texas



**BAYLOR** | Department of Religion  
College of Arts and Sciences

[Explore the Religion Department](#)

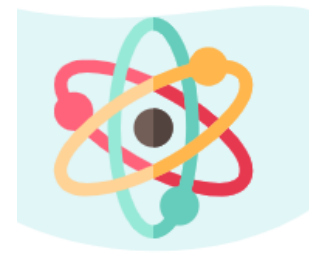
[About Us](#)  
[Faculty](#)

[Hubler Endowed Scholarship](#)



# Career Specific Scholarships

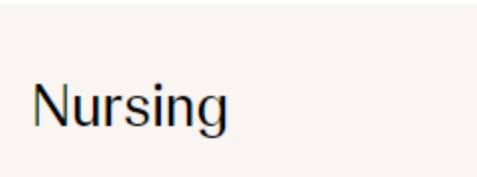
Awarded to students planning to pursue a specific field of study.



# Career Specific Scholarship Examples



Johnson&Johnson



ECOLAB EXPERIENTIAL EDUCATION  
SCHOLARSHIPS

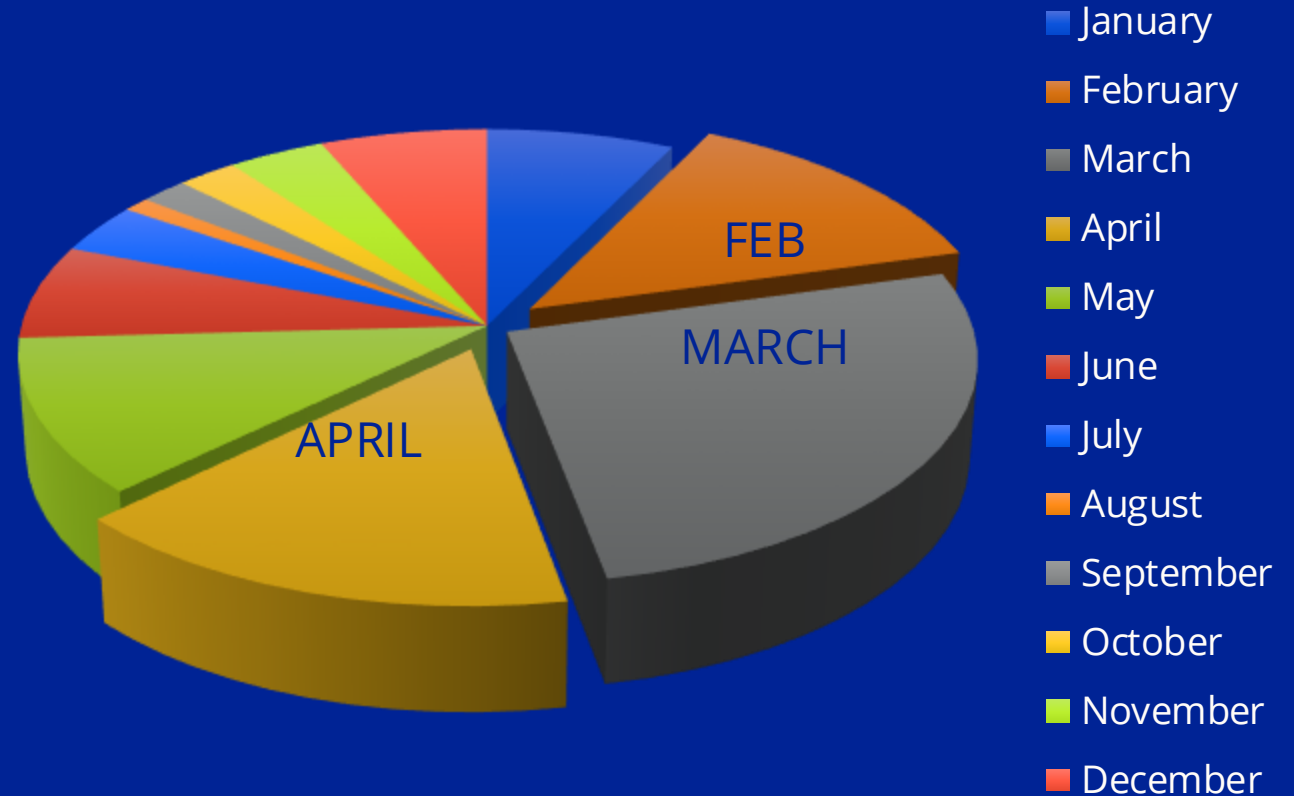


ACHIEVE, CONTRIBUTE & LEAD WITH INTEGRITY

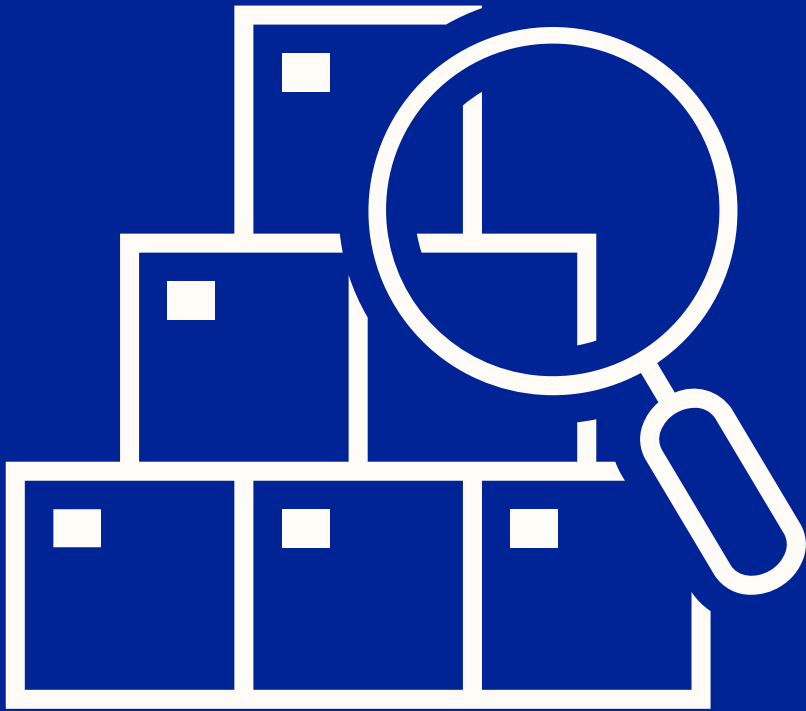


# When Is the Best Time to Apply?

- A large majority of scholarship deadlines are within the months of February-April.
- Some colleges have college-specific scholarships that have early deadlines around November and December.



# Where to Start?



- Search your community organizations
- Many employers offer scholarships for the children of employees
- College websites
- **Go online**

Source: [www.fastweb.com](http://www.fastweb.com)

# Online Scholarship Searches



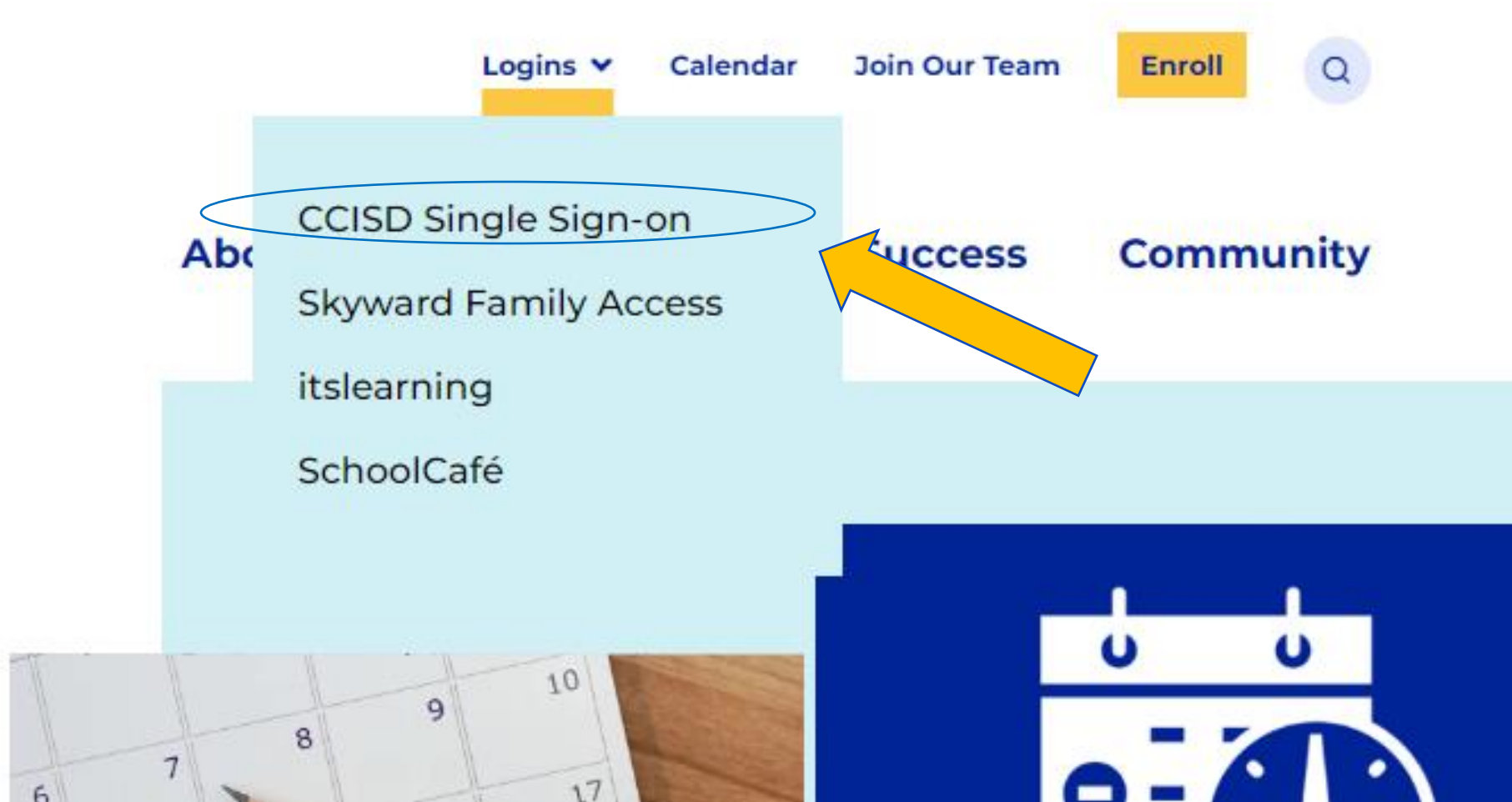
<http://student.naviance.com/>

Naviance is CCISD's online tool that organizes college and scholarship searches.

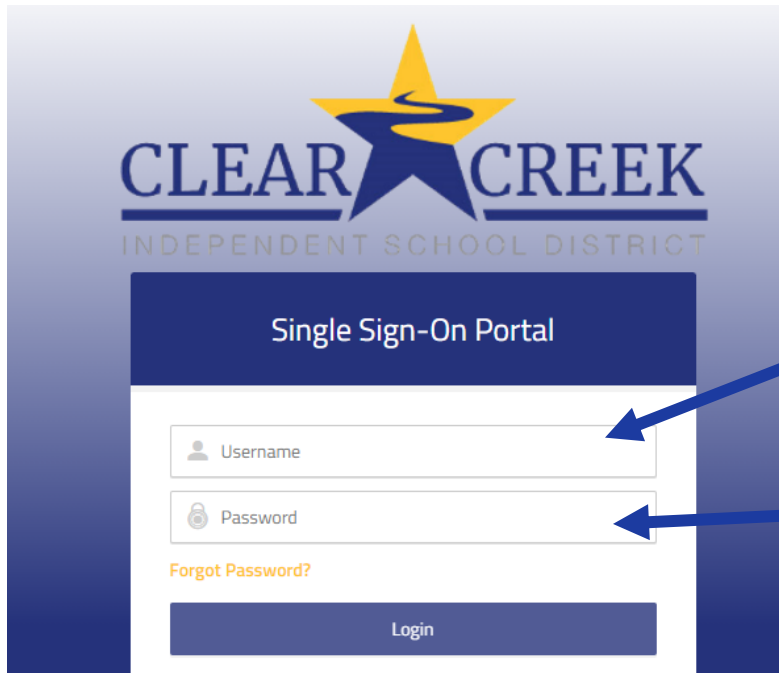
- Clearbrookhs
- Clearcreekhs
- Clearfalls
- Clearhorizons
- Clearlakehs
- Clearsprings
- Clearviewtx



# Navigation Through CCISD's Website



# CCISD Single Sign-On Portal



CLEAR CREEK  
INDEPENDENT SCHOOL DISTRICT

Single Sign-On Portal

Username

Password

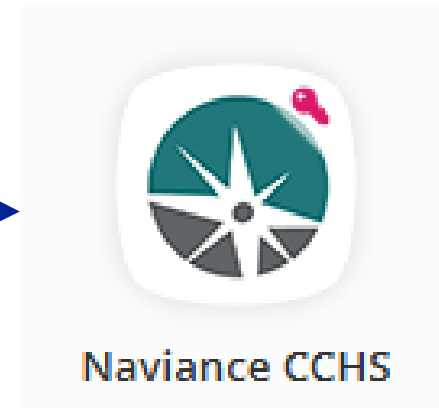
[Forgot Password?](#)

Login

Username = Student ID#

Password = Student Cafeteria Pin #

Scroll to the bottom of  
the landing page and  
find the Naviance  
Campus icon



# Click on Colleges Link



## Demo's Future Planning

[Military Service](#)

[College: Bachelor's Degree](#)

[Edit Path](#)

### Plan Your Future

Quickly access your path highlights, favorite careers, information from your school, and more from this page.



# Select Scholarships & Money

The image shows a screenshot of the Naviance website. The top navigation bar includes 'Home', 'Self-Discovery', 'Courses', 'Careers', 'Colleges', and 'Planner'. The 'Colleges' tab is selected. On the left, there is a 'Demo's Future Planning' section with a 'Plan Your Future' card. The main content area is divided into four columns: 'Find Your fit', 'Research Colleges', 'Apply to College', and 'Scholarships & Money'. The 'Scholarships & Money' column is circled in blue, and a yellow arrow points to the 'Favorite Scholarships' link. A search bar with 'Demo' is visible in the top right. A small note at the bottom right states 'GPA/RANK is located in the About Me link, unde'.

**Naviance**

Home Self-Discovery Courses Careers **Colleges** Planner

Demo's Future Planning

Plan Your Future  
Quickly access your path highlights, favorite information from your school, and more from

**Find Your fit**

- College Home
- SuperMatch College Search
- College Match
- College Events
- Scattergrams
- Advanced College Search
- College Lookup

**Research Colleges**

- Colleges I'm Thinking About
- College Visits
- College Compare
- College Resources
- Acceptance History
- Enrichment Programs
- College Maps

**Apply to College**

- Colleges I'm Applying To
- Manage Transcripts
- Letters of Recommendation
- Test Scores

**Scholarships & Money**

- College-Specific Scholarships
- National Scholarship Search
- Scholarship Search
- Favorite Scholarships

GPA/RANK is located in the About Me link, unde



# College-Specific Scholarship Search

## Scholarships & Money

[College-Specific Scholarships](#) [National Scholarship Search](#) [Scholarship Search](#) [Favorite Scholarships](#)

You may be eligible for these college-specific merit scholarships based on the academic data below. Please note that entering incorrect academic data will result in inaccurate scholarship estimates. Some amounts also reflect residency in **Texas**.

GPA (4.0 scale) [i](#)

4.0

Composite SAT [i](#)

1300

Composite ACT [i](#)

25

Class Rank [i](#)

25%

Show

Total Annual Cost

[i](#) About Scholarships and Financial Aid



**Saint Louis University**

Saint Louis, Missouri  
Private, 4-year

\$25,000 - \$30,000 per ...

Potential merit-based scholarship

\$56,080

Total annual cost

45% - 53%

Of total annual cost



**University of North Da...**

Grand Forks, North Dakota  
Public, 4-year

\$14,000 per year

Potential merit-based scholarship

\$29,503

Out-of-state total annual cost

47%

Of total annual cost



**Marquette University**

Milwaukee, Wisconsin  
Private, 4-year

\$18,000 - \$30,000 per ...

Potential merit-based scholarship

\$54,672

Total annual cost

33% - 55%

Of total annual cost



**Tiffin University**

Tiffin, Ohio  
Private, 4-year

\$17,000 per year

Potential merit-based scholarship

\$37,800

Total annual cost

45%

Of total annual cost



**Milwaukee School of ...**

Milwaukee, Wisconsin  
Private, 4-year

\$12,000 - \$24,000 per ...

Potential merit-based scholarship

\$51,166

Total annual cost

23% - 47%

Of total annual cost

**ACHIEVE, CONTRIBUTE & LEAD WITH INTEGRITY**



# National Scholarship Search



Colleges

Scholarships

Financial Aid

Pay for School



Apply for a loan

## Scholly Scholarships

Easily find and sort through thousands of college scholarships.

This is a database by Sallie Mae that is free for all students and families. Students are matched with scholarships they are most qualified for based on their individual profiles and eligibility criteria.

Premier

Sallie \$2,000 No Essay Scholarship\*

No essay

**\$2,000**

Apply Now →

Premier

ScholarshipOwl No Essay Scholarship

No essay

**\$50,000**

Apply Now →

Premier

"Be Bold" No Essay Scholarship

No essay

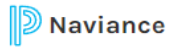
**\$25,000**

Apply Now →

ACHIEVE, CONTRIBUTE & LEAD WITH INTEGRITY



# Scholarship Search



Home Self-Discovery Courses Careers Colleges Planner

## Scholarships & Money

College-Specific Scholarships National Scholarship Search Scholarship Search Favorite Scholarships

Scholarships are a form of aid that does not have to be repaid. The list below contains scholarships or financial aid awards that may be relevant for you, based on information pulled from available scholarships.

Search all scholarships

Search

> [Gee Family Association Education Fund](#)

Deadline  
01/26/2024

Maximum Award  
\$1000

> [Houston Livestock Show and Rodeo](#)

Deadline  
01/31/2024

Maximum Award  
\$20000

> [FOSSI Scholarship](#)

Deadline  
01/31/2024

Maximum Award  
\$40000

> [Houston Relocation Professionals Scholarship](#)

Deadline  
02/15/2024

Maximum Award  
\$2500

Shows scholarships or financial aid awards that may be relevant for you, based on information pulled from your profile. Select the “Match and Filter” button to apply more criteria or select “Clear Filters” to view all available scholarships.

ACHIEVE, CONTRIBUTE & LEAD WITH INTEGRITY



# Other Online Search Options

**Scholarships.com**

[scholarships.com](http://scholarships.com)

**Fin Aid**

[finaid.org/scholarships](http://finaid.org/scholarships)

**Fast Web**

[fastweb.com](http://fastweb.com)

**My TX Future**

[mytexasfuture.org](http://mytexasfuture.org)

Source: [www.fastweb.com](http://www.fastweb.com)

# Avoid Scams and Beware of False Claims!

- “For a small fee, we’ll give you a list of scholarships.”
- “We’ll help you complete complicated forms.”
- “You are guaranteed a minimum of \$1000 in awards.”
- “We’ll need a bank account and pin or a credit card number to verify your account.”



# Tips for Applying

1. Get organized. (Academic information, SAT/ACT scores, letters of recommendation, personal essay, community/volunteer work)
2. Keep track of deadlines.
3. Separate the scholarships you are working on from those you have not started yet.
4. Proofread your materials and have a teacher, parent, or friend review your application and essay.
5. Avoid using your CCISD email address as you will not have access to this account once you graduate.

Source: [www.fastweb.com](http://www.fastweb.com)

# How Does a Scholarship Affect My Other Student Aid?

Scholarships may affect other student aid you are offered. You'll need to let your school know of the scholarship money you receive.



# Applying for Scholarships is a Time Investment

BUT THE PAYOFF  
CAN BE GREAT!

ACHIEVE, CONTRIBUTE & LEAD WITH INTEGRITY



# FAFSA/TASFA Graduation Requirement

With the adoption of TEC §28.0256 all students must now complete and submit a Free Application for Federal Student Aid (FAFSA) OR a Texas Application for State Financial Aid (TASFA) starting with the Class of 2022.

Families do have the option to complete a CCISD Financial Aid Opt-Out form. Please see your campus Counselor for more information.



# CCISD YOUniversity Course



Scan to Enroll in Post Secondary Planning Course Today!



# Texas Free College Application Week



**ONE**  
W E E K  
**ZERO**  
F E E S

➤ **October 13-19, 2025**

**TEXAS FREE COLLEGE APPLICATION WEEK**  
Texas is waiving college application fees!

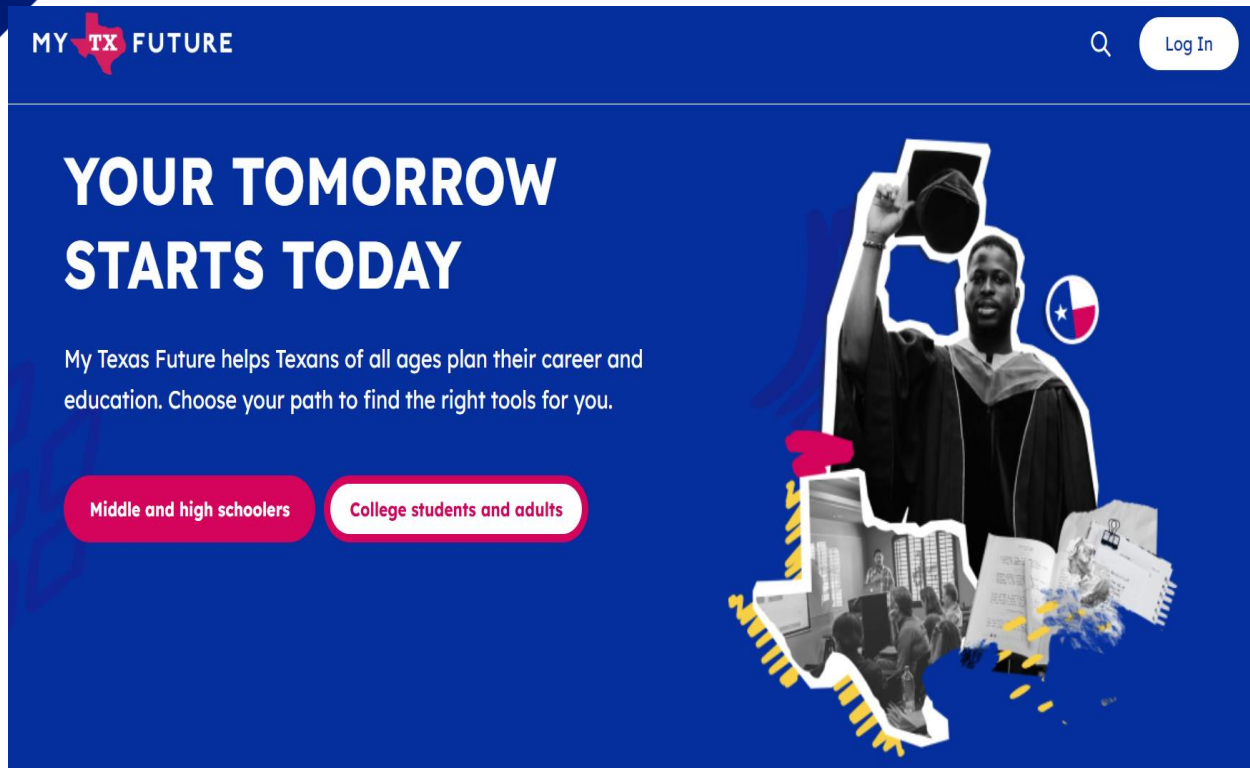
- First-Year and Transfer Applicants
- All Texas Public Colleges and Universities
- Apply via ApplyTexas

**THECB** | Texas Higher Education  
COORDINATING BOARD

[ApplyTexas.org](https://www.applytexas.org)



# My Texas Future



MY TX FUTURE

Log In

## YOUR TOMORROW STARTS TODAY

My Texas Future helps Texans of all ages plan their career and education. Choose your path to find the right tools for you.

Middle and high schoolers

College students and adults

ACHIEVE, CONTRIBUTE & LEAD WITH INTEGRITY

## Key Features and Benefits:

- **Career Exploration:** The Career Explorer tool helps users compare different careers based on salary, educational requirements, and local job market data.
- **College Program Research:** Users can explore over 100-degree plans and compare college programs and their costs.
- **Direct Admissions:** Texas students can opt-in to share their academic information (like GPA and test scores) with colleges to see where they are accepted before applying.
- **Personalized Guidance:** Connects users with institutional advisors for personalized guidance on their educational journey.
- **Financial Aid Information:** Resources are available to help users understand and access financial aid, grants, and scholarships.
- **Adult Learner Support:** Supports working-age Texans looking to start or complete their degrees and advance their careers.

[www.mytexasfuture.org](http://www.mytexasfuture.org)

# Scholarship Questions?

ACHIEVE, CONTRIBUTE & LEAD WITH INTEGRITY

