

## Volunteer Clearances Reminder

All volunteers must have updated, approved clearances on file. For the safety of our students and staff, no one may volunteer without current clearances reviewed and approved by HR. Thank you for supporting a safe learning environment.

## Employee Clearance Reminder: Clearances Expiring? Renew on Time!

We kindly remind all employees to stay attentive to clearance renewal notices. Clearances must be renewed before their expiration date to remain eligible to work. Thank you for helping us maintain a safe and secure environment.

## Socktober



From October 1-31, we will collect NEW socks in all eleven of our Schools and the District Administration Office.

We are teaming up with “Socks for the Streets” to distribute socks to people suffering with homelessness in Bucks & Montgomery Counties



## Don't forget!

- Column Movement applications are due to HR no later than September 30, 2025, to be considered for salary advancement during the 25/26 school year.
- Level I teachers must complete 24 credits of post bachelors coursework as part of the requirements to convert your Level I certification to Level II.
- For information regarding the Level I to Level II conversion process, please reach out to Donna Schepis ([dschepis@pennridge.org](mailto:dschepis@pennridge.org)).
- For those of you who require a substitute in your absence don't forget to log your absence into Frontline/ESS and Timeclock Plus. Please reach out to Emma Weiss ([eweiss@pennridge.org](mailto:eweiss@pennridge.org)) for assistance.

## Contact us:

**Tara Mossman**  
[tmossman@pennridge.org](mailto:tmossman@pennridge.org)  
ext. 122368

**Donna Schepis**  
[dschepis@pennridge.org](mailto:dschepis@pennridge.org)  
ext. 122368

**Nicole Foster**  
[nfoster@pennridge.org](mailto:nfoster@pennridge.org)  
ext. 122716

**Michelle Jensen**  
[mjensen@pennridge.org](mailto:mjensen@pennridge.org)  
ext. 122711

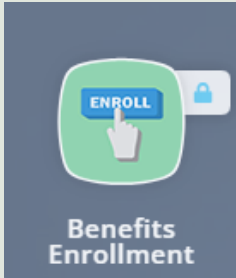
**Joanne O'Reilly**  
[joreilly@pennridge.org](mailto:joreilly@pennridge.org)  
ext. 125011

**Emma Weiss**  
[eweiss@pennridge.org](mailto:eweiss@pennridge.org)  
ext. 122206

# *Student Verification*

Do you have a dependent college student? Are they covered under your Dental Insurance? If so, please remember that you will need to verify their full time student status *each semester* in the benefit portal.

Login to the Benefit Portal through PSD Key and upload documentation that includes:



- Student's Name
- University Name
- Current Semester
- 12+ Credit enrolled

## [Benefit Portal - Student Verification Guide](#)

## *Flexible Spending & Dependent Care*

**Did you elect a Healthcare FSA or Dependent Care FSA this plan year?**

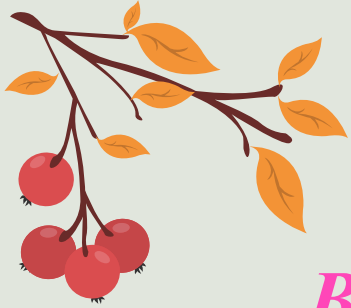
Register your account with HealthEquity online to manage your plan, submit receipts, request reimbursement, and more.

### [HealthEquity - Member Login](#)

**Are you wondering what expenses qualify for FSA?**

**Check out the link below:**

### [HealthEquity - Healthcare FSA Eligible Expenses](#)



*Healthy You!*

**October is:**

***Breast Cancer Awareness Month***

Breast Cancer Awareness month is a global effort to raise awareness for breast cancer, encourage screenings, and provide support for those affected by the disease.

[Access your EAP resources: Health Advocate Login Guide](#)

**Health Advocate Digital Resources:**

- [Health Advocate Article - Breast Health: Preventative Care](#)
- [Health Advocate Article: Breast Self-Awareness](#)



**Every Story is  
Unique, Every  
Journey Matters.**