



Stege Elementary School  
Campus Replacement  
Richmond, CA  
West Contra Costa Unified School District

Project Update September 16, 2025



**PERKINS —  
EASTMAN**



---

# CONSTRUCTION UPDATES

## CAMPUS DEMOLITION AND SITE PROTECTION

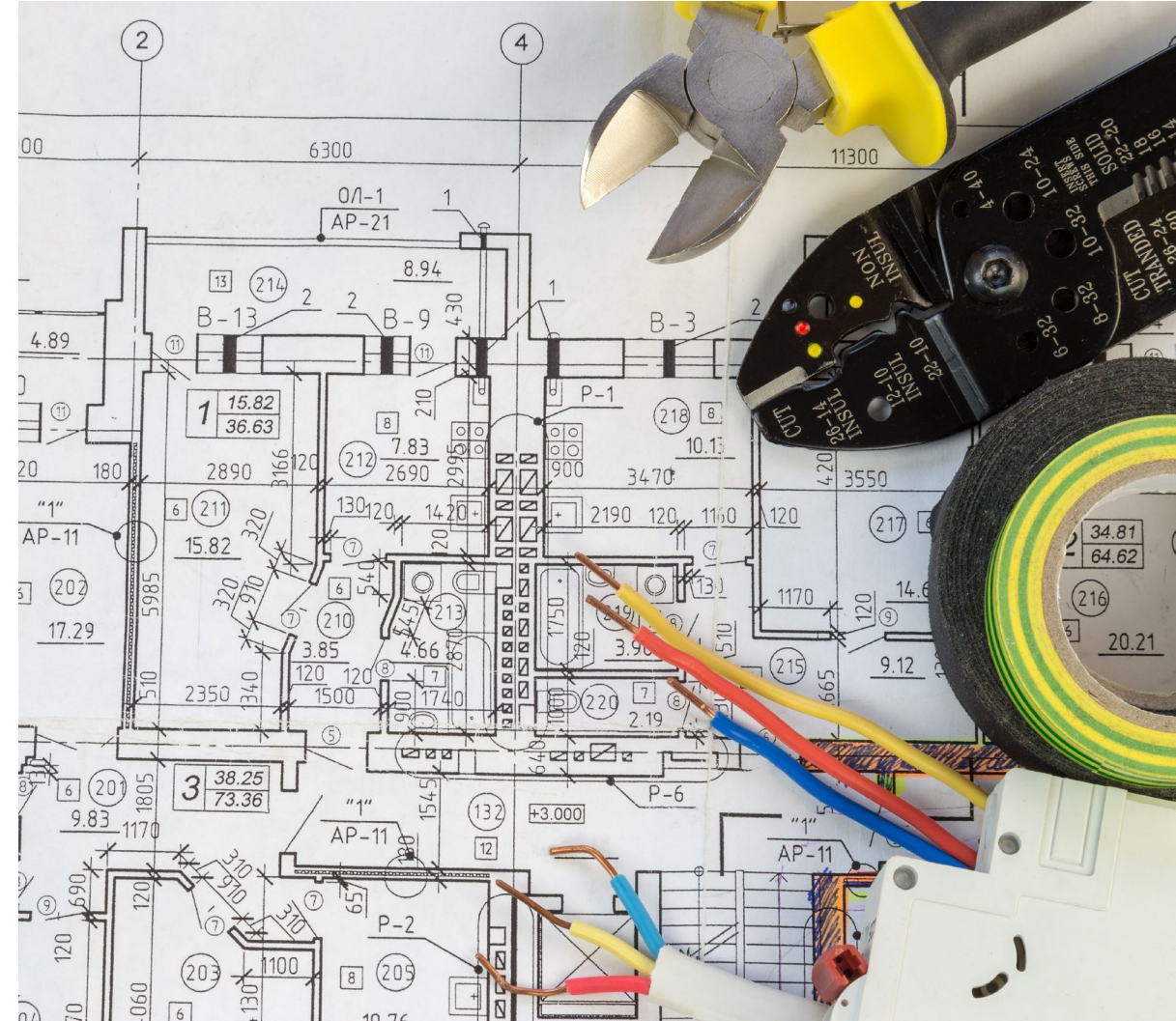
- Demolition Completion  
(09/10/2025)
- Coordinated with BAAQMD, PG&E,  
and DSA
- Construction Fencing and Signage  
Continue to Secure the Site
- Synthetic Dust Suppression  
measures implement for dust  
control



# CONSTRUCTION UPDATES

## WHAT'S NEXT?

- Jurisdictional Review and Construction Timeline
- Increment 1 – Site Utilities and Grading
  - Pending DSA approval for construction permit
  - Construction anticipated to begin in Winter
  - Scope includes site utility connections and grading
- Increment 2 – Buildings
  - Jurisdictional review underway
  - Construction anticipated to begin in Spring



# DESIGN UPDATES

- Where We Are
- Interior Concept and Update
- Exterior Concept
- Q&A



## COLOR CONCEPTS

### Three Inspirations

- Nature
- Celestial
- Local Ecosystem



### Placement of Color

- Classrooms Neutral
- Commons Vibrant and Different



PERKINS EASTMAN STEGE ELEMENTARY SCHOOL DESIGN DEVELOPMENT

# WHERE WE ARE

Time	Content
Jan 29	Classroom and Site Layout (Teacher's Meeting)
Jan 31	Admin and Site Layout (Staff Meeting)
Feb 03	City of Richmond – Preliminary Meeting
Feb 10	Site Layout Preference (School Site Council)
Mar 06	Community Meeting
Apr 02	Classroom Storage Configuration Preference AND Outdoor Elements (Teacher's Meeting)
Apr 16	Library Layout
Apr 22	Outdoor Elements (Student Engagement Meeting)
May 05	Interiors – (Teacher/Staff Meeting)
May 05	Parent Meeting
May 06	Kitchen/Speedline Layout
May 15	Community Meeting
May 29	City of Richmond – Site Plan

Time	Content
Jun 11	City of Richmond – Site Plan Updates
Jun 12	Maintenance & Operations Staff – Design Development Page-Turn
Jun 24	California Department of Education – Project Introduction Meeting
Jun 30	Division of the State Architect – Pre-application meeting
Aug 15	Maintenance & Operations Staff – 50% Construction Documentation Page -Turn
Sep 2	City of Richmond Fire Department – Preliminary Meeting
Sep 16	Community Meeting
Sep 19	DSA – Site Utility Package 1 Submission
Oct 29	DSA – Building and Site Package 2 Submission
TBD	City of Richmond Meeting
TBD	Health Department Meeting

# WHERE WE ARE

## Play Structures

- 1a TK/K
- 1b G1-6

## Outdoor Learning Areas

- 2a Outdoor Learning Area
- 2b Outdoor Learning Area
- 2c Outdoor Learning Area
- 2d Tiered Seating (outside Library)

## Colorful Hardcourt Area

- 3a Basketball Courts
- 3b Four Square + other markings
- 3c Running/walking path

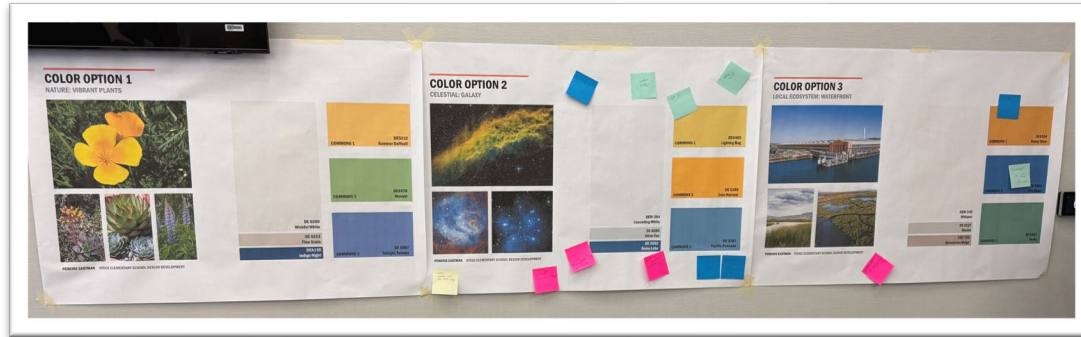
## Special Areas

- 4a Raised beds
- 4b Covered Lunch Shelter

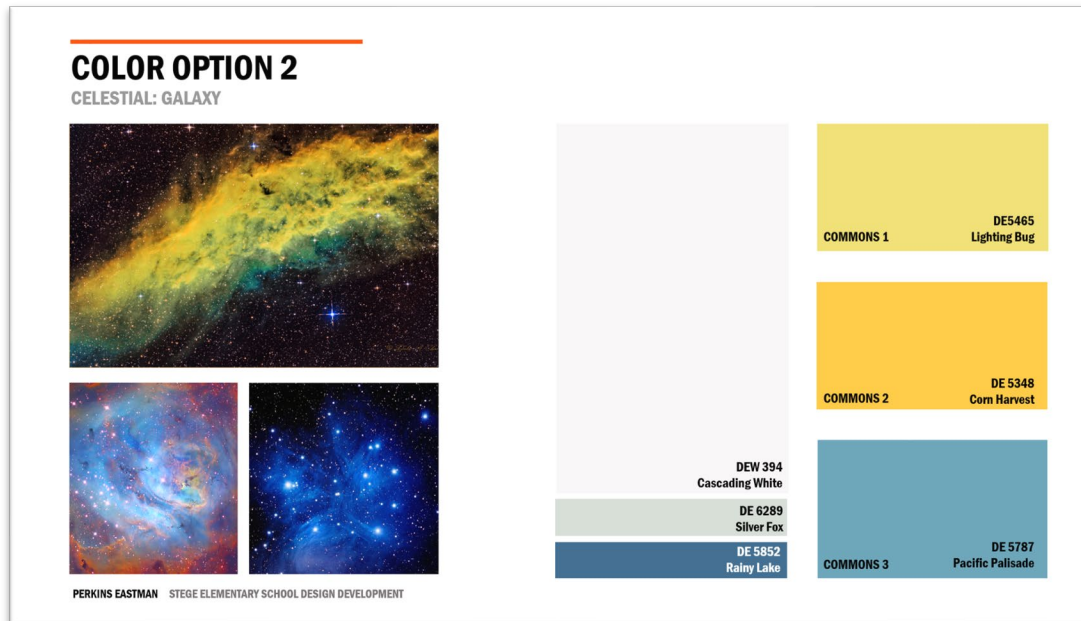


# WHERE WE ARE

CHOOSE YOUR FAVORITE

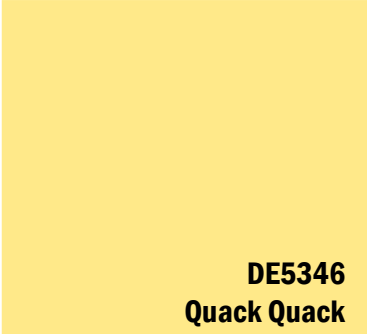
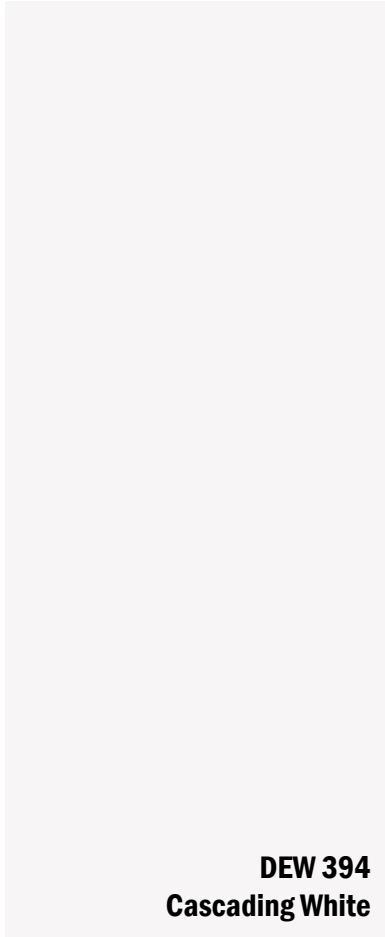


- Most people prefer the celestial theme for the color design.
- There were also suggestions to incorporate the green color from Option 3.

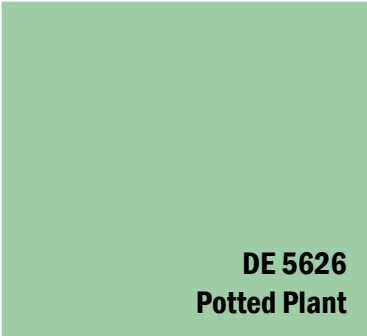


# SELECTED COLOR OPTION

CELESTIAL: GALAXY



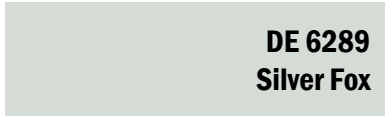
**DE5346**  
**Quack Quack**



**DE 5626**  
**Potted Plant**



**DE 5787**  
**Pacific Palisade**



**DEW 394**  
**Cascading White**

**DE 6289**  
**Silver Fox**



**Lumenology**  
**Shaft**



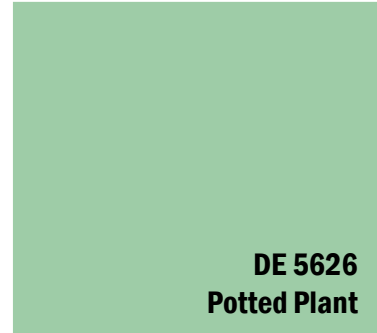
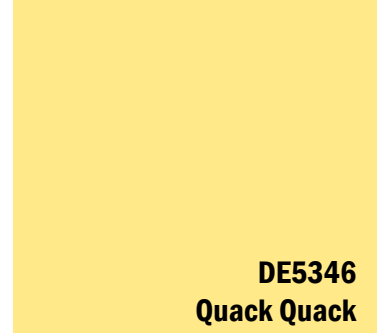
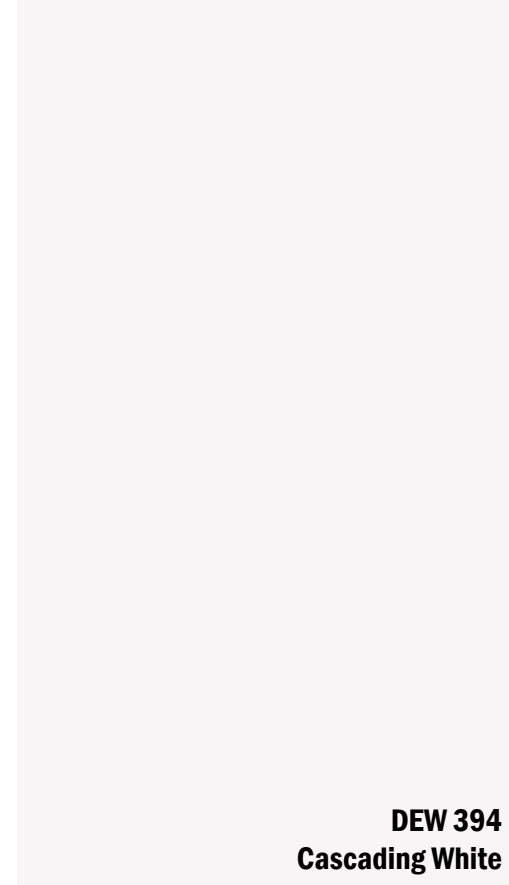
**Lumenology**  
**Iridescent**



**Local Measure**  
**Honey**

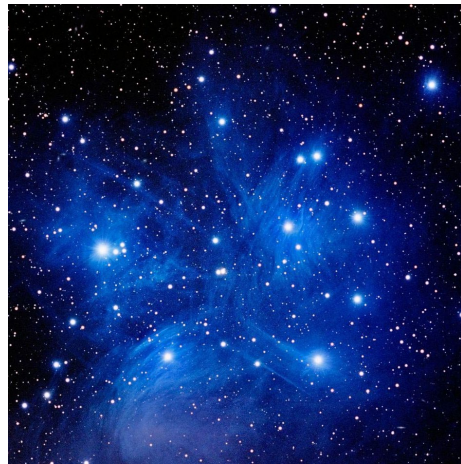
# INTERIOR DESIGN

CELESTIAL: GALAXY



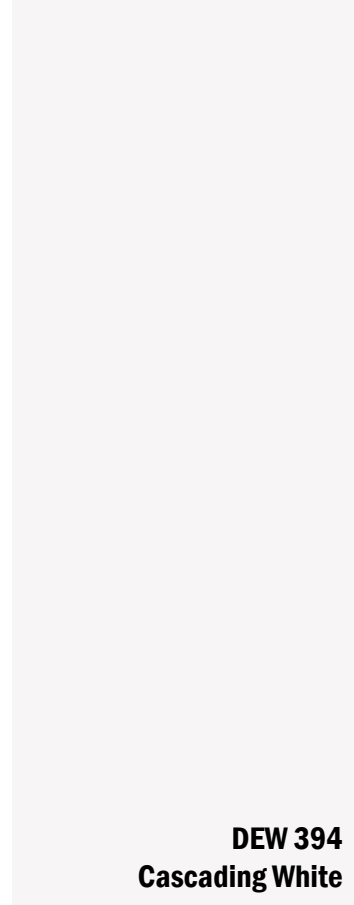
# INTERIOR AND EXTERIOR DESIGN

CELESTIAL: GALAXY

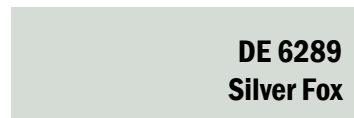


INSPIRATIONS

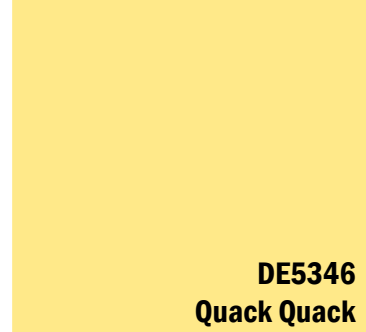
PERKINS EASTMAN STEGE ELEMENTARY SCHOOL



DEW 394  
Cascading White



DE 6289  
Silver Fox



DE5346  
Quack Quack



DE 5626  
Potted Plant



DE 5787  
Pacific Palisade



DEGR22  
Bone Dry



DEGR46  
Distant Dusk



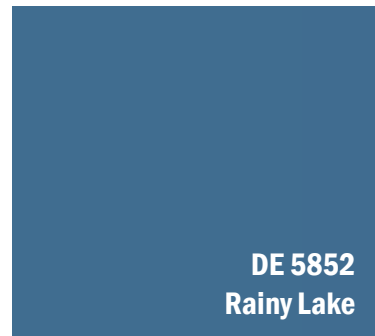
DEGR50  
Great Gray Owl



DE 5348  
Corn Harvest



DE 5627  
Verde



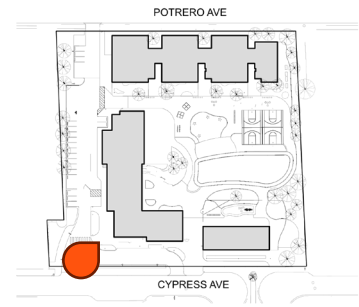
DE 5852  
Rainy Lake

INTERIORS

EXTERIORS

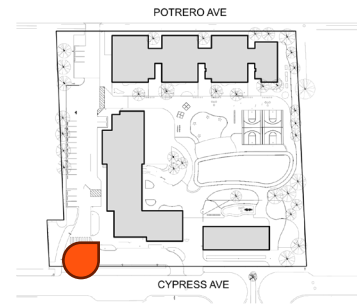
# EXTERIOR DESIGN

BIRD-EYE VIEW



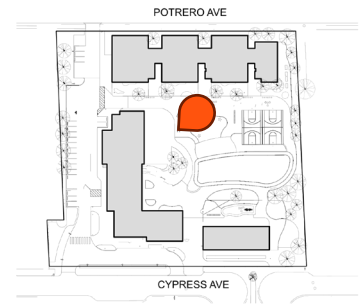
# EXTERIOR DESIGN

ADMIN ENTRY



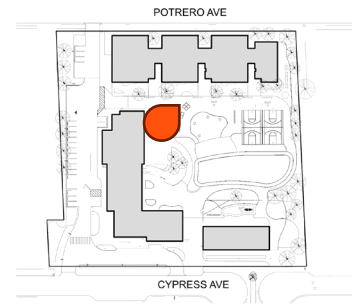
# EXTERIOR DESIGN

MULTI-PURPOSE AND OUTDOOR



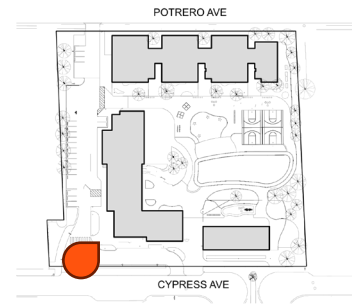
# EXTERIOR DESIGN

## CLASSROOM BUILDING



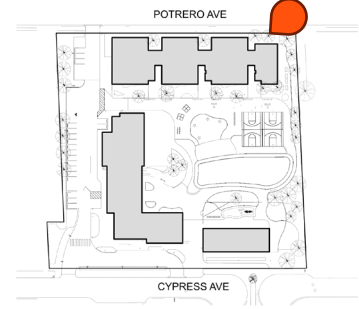
# EXTERIOR DESIGN

BIRD-EYE VIEW



# PLEASE SHARE YOUR INPUT!

CHOOSE YOUR FAVORITE



Human by Design