

Lexington–Richland School District 5
 River Springs Elementary School
 Roof Restoration Project
 115 Connie Wright Road
 Irmo, South Carolina 29063



REVISIONS	No.	DATE	BY

NOTES:

For Construction

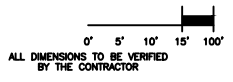
- LEGEND:**
- PEC Parapet Wall With New Coping
 - MEQ Metal Edge In Gutter
 - RMSE Rolled Metal Edge
 - TWF Thru Wall Flashing
 - EJ Expansion Joint
 - RD Roof Drain
 - HVAC HVAC Unit
 - RC Roll Curb
 - PP Pitch Pan
 - SS Soil Stack
 - AE Abandon Equipment - Remove

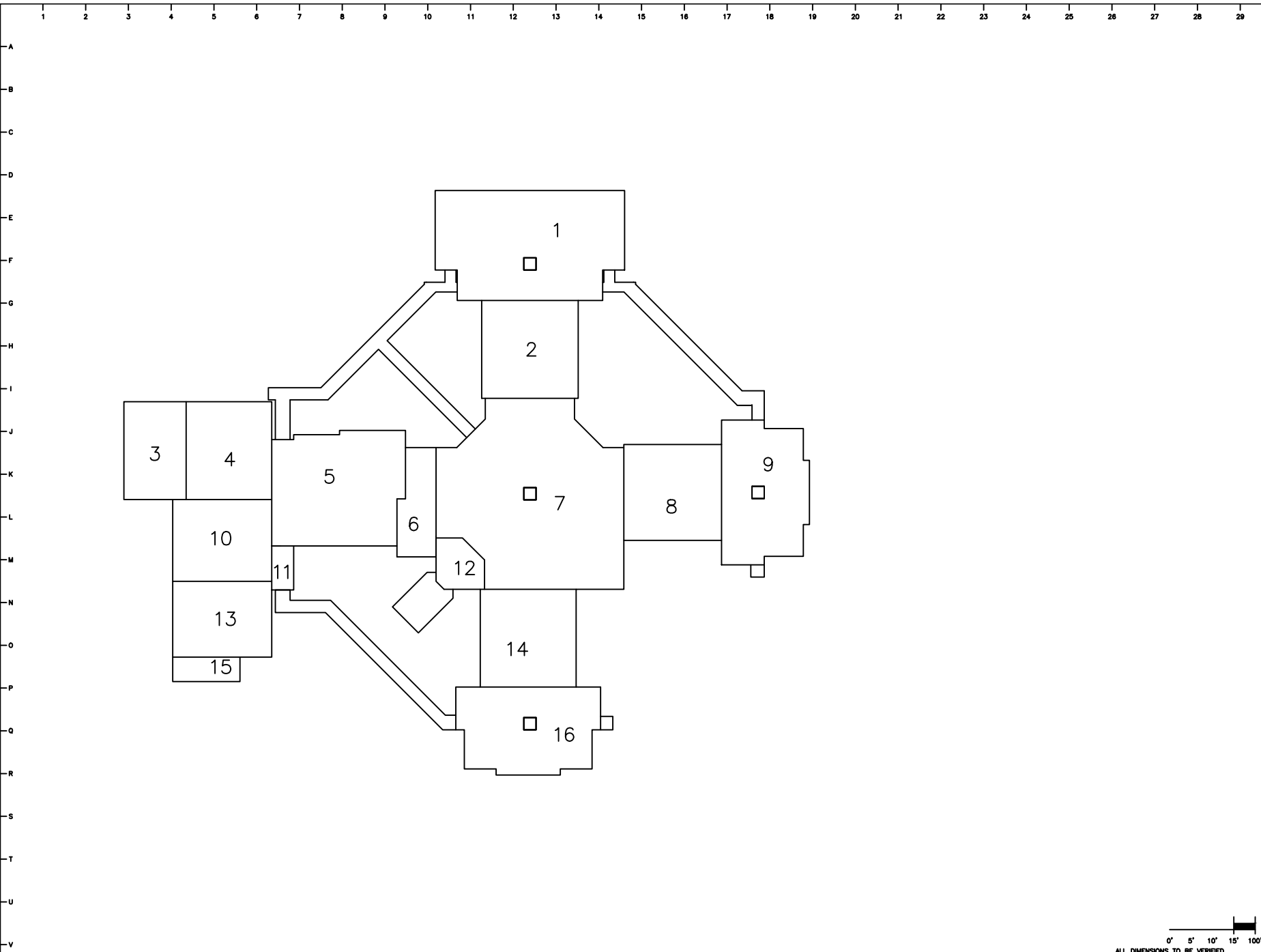
CUSTOMER:
Lexington–Richland District 5

BUILDING:
River Springs Elementary

LOCATION:
Irmo SC

Drawing Name	Cover Page
COVER BY	DATE DRAWN
FAE	9/9/24
Revision	Drawing #
0	R1





REVISIONS	No.	DATE	BY

NOTES:

For Construction

LEGEND:

- Par: Parapet Wall With New Coping
- MEQ: Metal Edge In Gutter
- RME: Rolled Metal Edge
- TWF: Thru Wall Flashing
- EJ: Expansion Joint
- RD: Roof Drain
- HVAC: HVAC Unit
- RC: Roll Curb
- PP: Pitch Pan
- SS: Sill Stock
- AE: Abandon Equipment - Remove

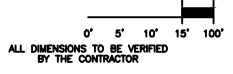
CUSTOMER:
Lexington-Richland District 5

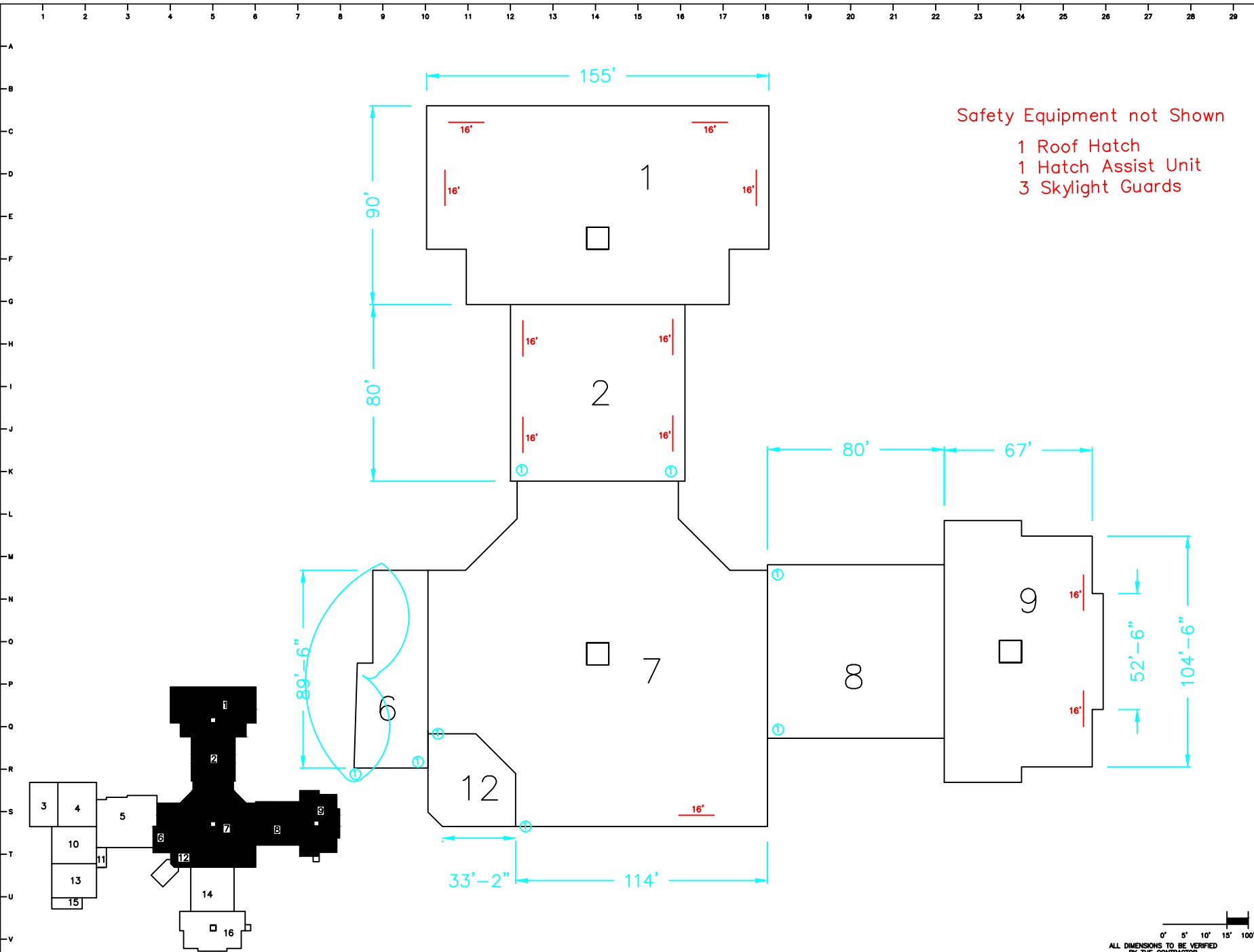
BUILDING:
River Springs Elementary

LOCATION:
Irmo SC

Drawing Name	Cover Page
COVER PAGE	COVER PAGE

DRAWN BY FAE	DATE DRAWN 9/9/24	Drawing # R2
Revision 0		





Safety Equipment not Shown
 1 Roof Hatch
 1 Hatch Assist Unit
 3 Skylight Guards

REVISIONS	No.	DATE	BY

NOTES:
 ① New Thru wall flashing

For Construction



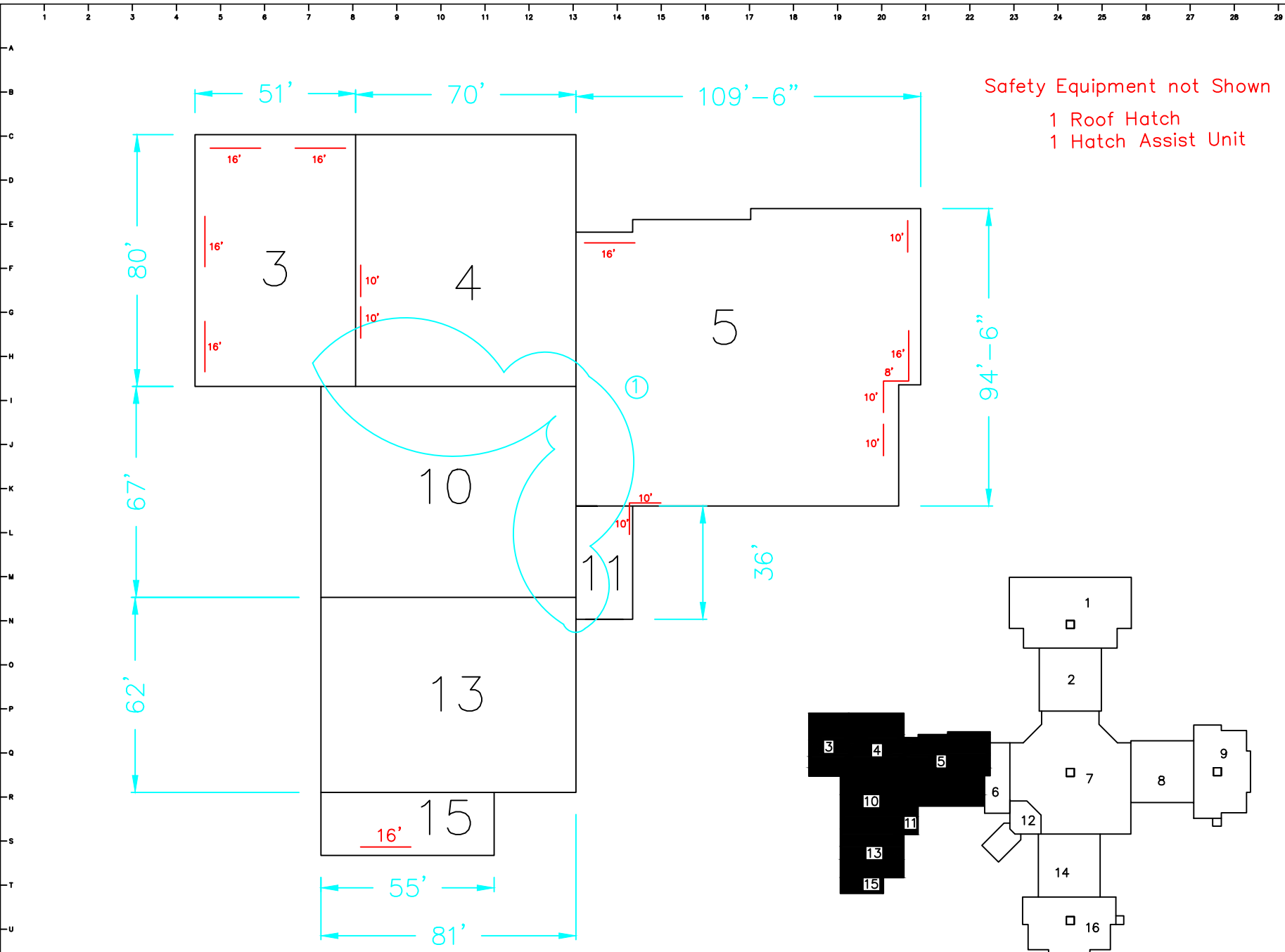
LEGEND:

- PHC Parapet Wall With New Coping
- MEQ Metal Edge In Gutter
- PME Polished Metal Edge
- TWF Thru Wall Flashing
- EJ Expansion Joint
- RD Roof Drain
- HVAC HVAC Unit
- RC Roll Curb
- PP Pitch Pan
- SS Soff Stack
- AE Abandon Equipment - Remove



CUSTOMER: Lexington-Richland District 5		
BUILDING: River Springs Elementary		
LOCATION: Imo SC		
Drawing Name Cover Page	Enlarged Plan 1	
DRAWN BY FAE	DATE DRAWN 9/9/24	Drawing # R3
Revision 0		

0' 5' 10' 15' 100'
 ALL DIMENSIONS TO BE VERIFIED BY THE CONTRACTOR



REVISIONS	No.	DATE	BY

NOTES:

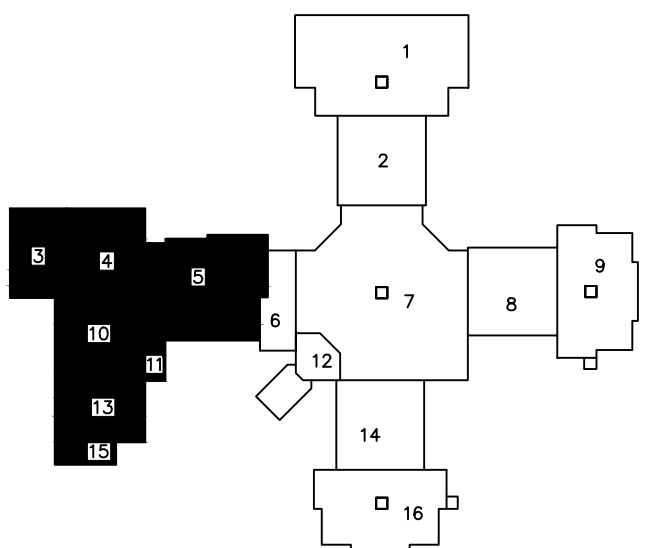
① New Thru wall flashing

For Construction



LEGEND:

- PHC Parapet Wall With New Coping
- MEQ Metal Edge In Gutter
- RME Rolled Metal Edge
- TWF Thru Wall Flashing
- EJ Expansion Joint
- RD Roof Drain
- HVAC HVAC Unit
- RC Roll Curb
- PP Pitch Pan
- SS Soff Stack
- AE Abandon Equipment - Remove

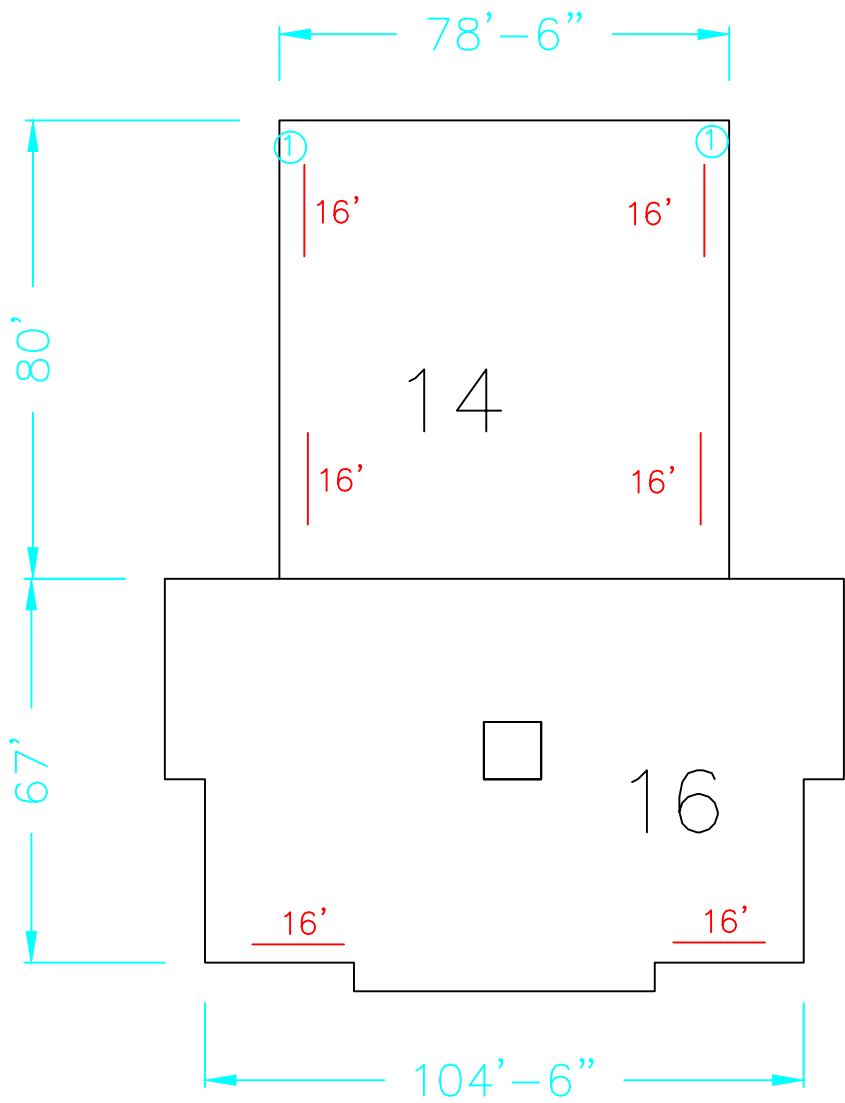
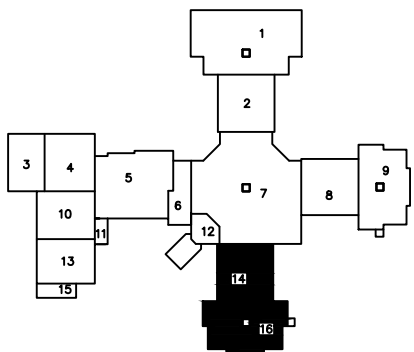


CUSTOMER:			Lexington-Richland District 5
BUILDING:			River Springs Elementary
LOCATION:			Imo SC
Drawing Name		Enlarged Plan 2	
Cover Page			
DRAWN BY	DATE DRAWN	Drawing #	
FAE	9/9/24	R4	
Revision	0		

1 2 3 4 5 6 7 8 9 10 11 12 13 14 15 16 17 18 19 20 21 22 23 24 25 26 27 28 29

A
B
C
D
E
F
G
H
I
J
K
L
M
N
O
P
Q
R
S
T
U
V

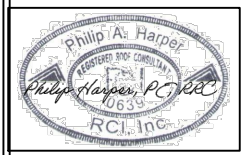
Safety Equipment not Shown
1 Skylight Guards



REVISIONS	No.	DATE	BY

NOTES:
① New Thru wall flashing

For Construction



LEGEND:

- Par: Parapet Wall With New Coping
- MEQ: Metal Edge In Gutter
- RME: Rolled Metal Edge
- TWF: Thru Wall Flashing
- EJ: Expansion Joint
- RD: Roof Drain
- HVAC: HVAC Unit
- RC: Roll Curb
- PP: Pitch Pan
- SS: Soff Stock
- AE: Abandon Equipment - Remove



CUSTOMER: Lexington-Richland District 5	
BUILDING: River Springs Elementary	
LOCATION: Inmo SC	
Drawing Name Cover Page	Enlarged Plan
DRAWN BY FAEI	DATE DRAWN 9/9/24
Revision 0	Drawing # Rr5

0' 5' 10' 15' 100'
ALL DIMENSIONS TO BE VERIFIED BY THE CONTRACTOR

1 2 3 4 5 6 7 8 9 10 11 12 13 14 15 16 17 18 19 20 21 22 23 24 25 26 27 28 29

A
B
C
D
E
F
G
H
I
J
K
L
M
N
O
P
Q
R
S
T
U
V



Life Safety Plan Notes

- 1 – Fire truck access marked with a ●
- 2 – Contractor shall have full access to the general site for laydown. However a site plan shall be submitted for approval.
- 3 – All access doors that cannot be secured will require scaffolding and protection while students are present.
- 4 – All doors not being covered due to lack of work in the area still need to be marked with signage regarding construction.

REVISIONS	No.	DATE	BY

NOTES:

For Construction



LEGEND:

- PHC Parapet Wall With New Coping
- MEQ Metal Edge & Gutter
- RME Rolled Metal Edge
- TWF Thru Wall Flashing
- EJ Expansion Joint
- RD Roof Drain
- HVAC HVAC Unit
- RC Roll Curb
- PP Pitch Pan
- SS Soil Stack
- AE Abandon Equipment - Remove



CUSTOMER:		Lexington-Richland District 5	
BUILDING:		River Springs Elementary	
LOCATION:		Inmo SC	
Drawing Name	Cover Page	Cover Page	
DRAWN BY	DATE DRAWN	Drawing #	
PAE	7/14/25	LS1	
Revision	0		

0' 5' 10' 15' 100'
ALL DIMENSIONS TO BE VERIFIED BY THE CONTRACTOR