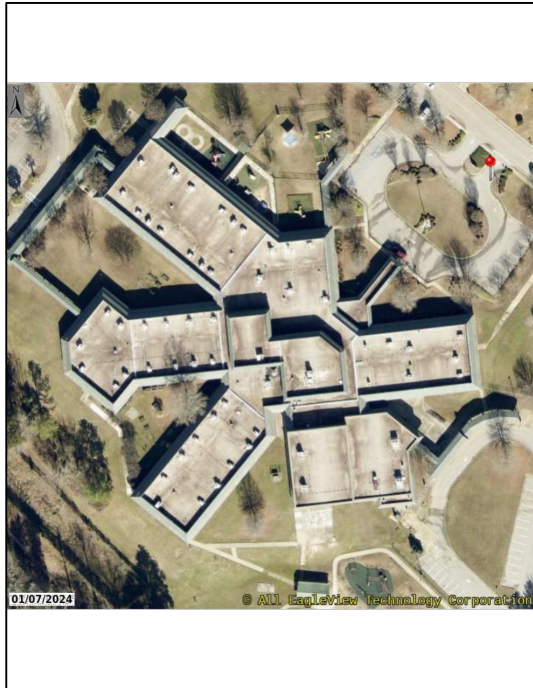




Lexington–Richland School District 5  
 HE Corley Elementary School  
 Roof Restoration Project  
 1500 Chadford Road  
 Irmo, South Carolina 29063



REVISIONS	No.	DATE	BY

NOTES:

For Construction



- LEGEND:**
- PCO Parapet Wall With New Coping
  - MEQ Metal Edge In Gutter
  - RME Rolled Metal Edge
  - TWF Thru Wall Flashing
  - EJ Expansion Joint
  - RD Roof Drain
  - HVAC HVAC Unit
  - RC Roll Curb
  - PP Pitch Pan
  - SS Soil Stack
  - AE Abandon Equipment - Remove

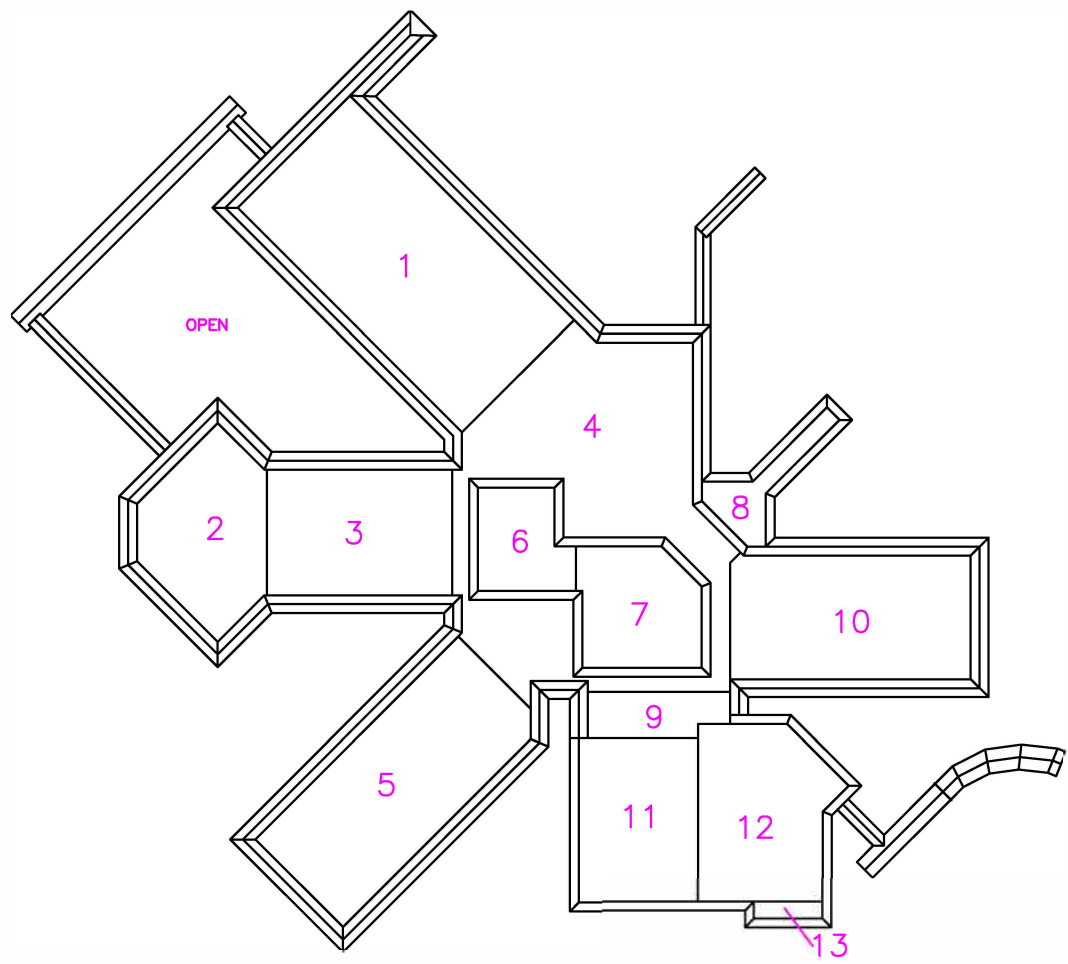


CUSTOMER: Lexington–Richland District 5	
BUILDING: HE Corley Elementary	
LOCATION: Irmo SC	
Drawing Name Cover Page	Cover Page
DRAWN BY FAE	DATE DRAWN 9/9/24
Revision 0	Drawing # R1

0' 5' 10' 15' 100'  
 ALL DIMENSIONS TO BE VERIFIED  
 BY THE CONTRACTOR

1 2 3 4 5 6 7 8 9 10 11 12 13 14 15 16 17 18 19 20 21 22 23 24 26 28 27 28 29

A  
B  
C  
D  
E  
F  
G  
H  
I  
J  
K  
L  
M  
N  
O  
P  
Q  
R  
S  
T  
U  
V



Roof Section	Square Footage
1	15,842
2	6,146
3	7,332
4	16,649
5	11,118
6	2,794
7	4,400
8	1,550
9	2,162
10	9,377
11	5,930
12	7,018
13	366
<b>Total Square Footage</b>	<b>90,684</b>

REVISIONS	No.	DATE	BY

NOTES:

For Construction



**LEGEND:**

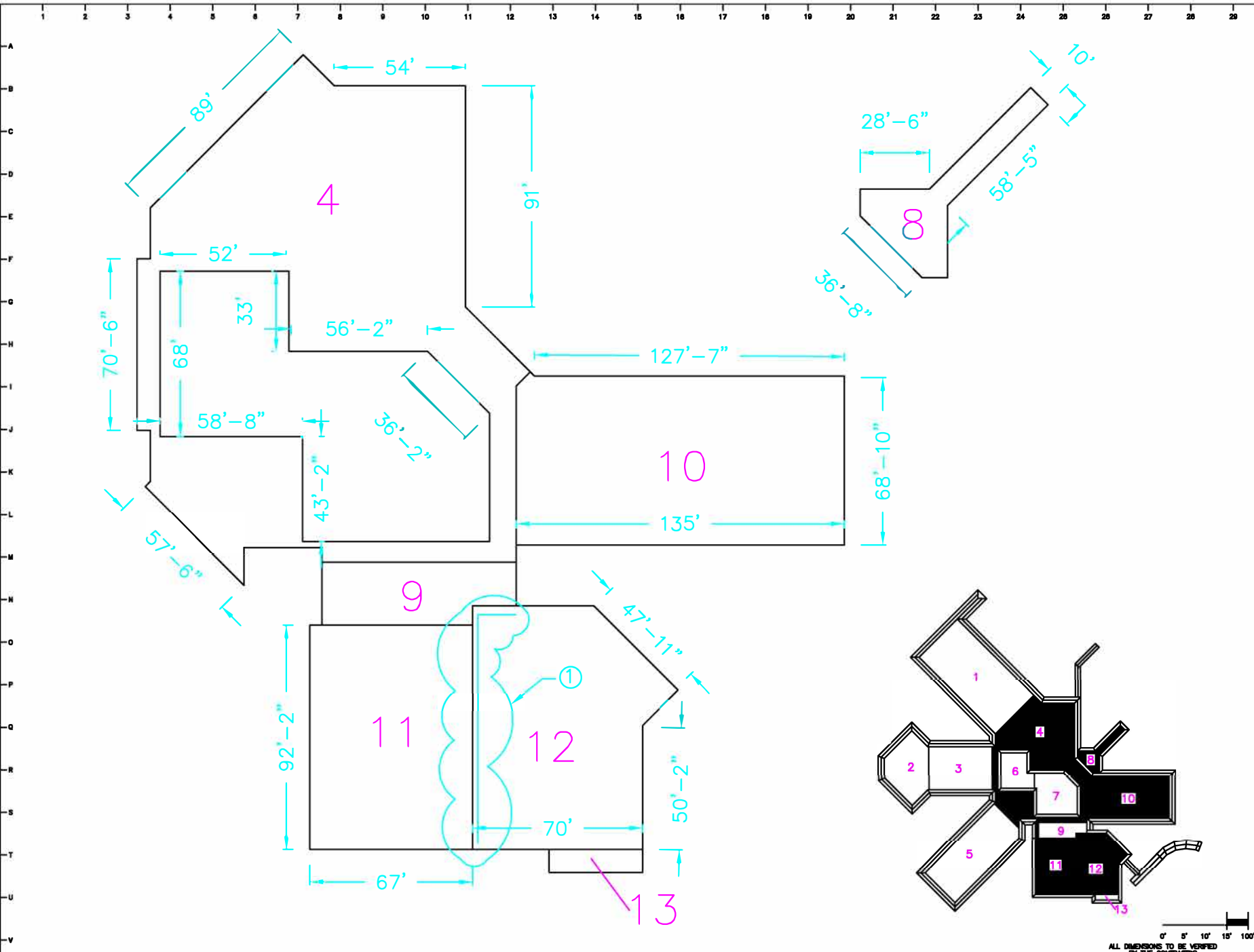
- Flash: Membrane Wall (W) New Coping
- Wall: Metal Edge @ Exterior
- Wall: Insulated Metal Edge
- Wall: Thru Wall Flashing
- Expansion Joint
- Roof Drain
- HVAC Unit
- Ball Core
- Flash Pan
- Ball Shank
- AE Abandon Equipment - Remove



<b>CUSTOMER:</b> Lexington-Richland District 5	
<b>BUILDING:</b> HE Corley Elementary	
<b>LOCATION:</b> Imo SC	
<b>Drawing Name:</b> Cover Page	
<b>DRAWN BY:</b> PAB	<b>DATE DRAWN:</b> 9/8/24
<b>Revision:</b> 0	<b>Drawing #:</b> R2

0' 5' 10' 15' 100'

ALL DIMENSIONS TO BE VERIFIED BY THE CONTRACTOR



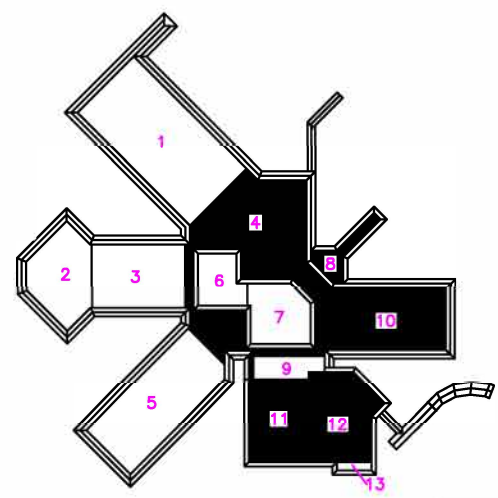
REVISIONS	No.	DATE	BY

NOTES:  
 ① New Thru wall flashing

For Construction



- LEGEND:
- Perimeter Wall With Vinyl Coping
  - Metal Edge in Outlets
  - Rebar Metal Edge
  - Thru Wall Flashing
  - Expansion Joint
  - Roof Drain
  - HVAC Unit
  - Roll Curb
  - Flash Pan
  - Sill Block
  - Abandon Equipment - Remove



CUSTOMER: Lexington-Richland District 5	
BUILDING: HE Corley Elementary	
LOCATION: Irmo SC	
Drawing Name Cover Page	Enlarged Plan 1
DRAWN BY PAE	DATE DRAWN 9/9/26
Revision 0	Drawing # R3

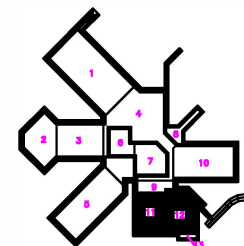
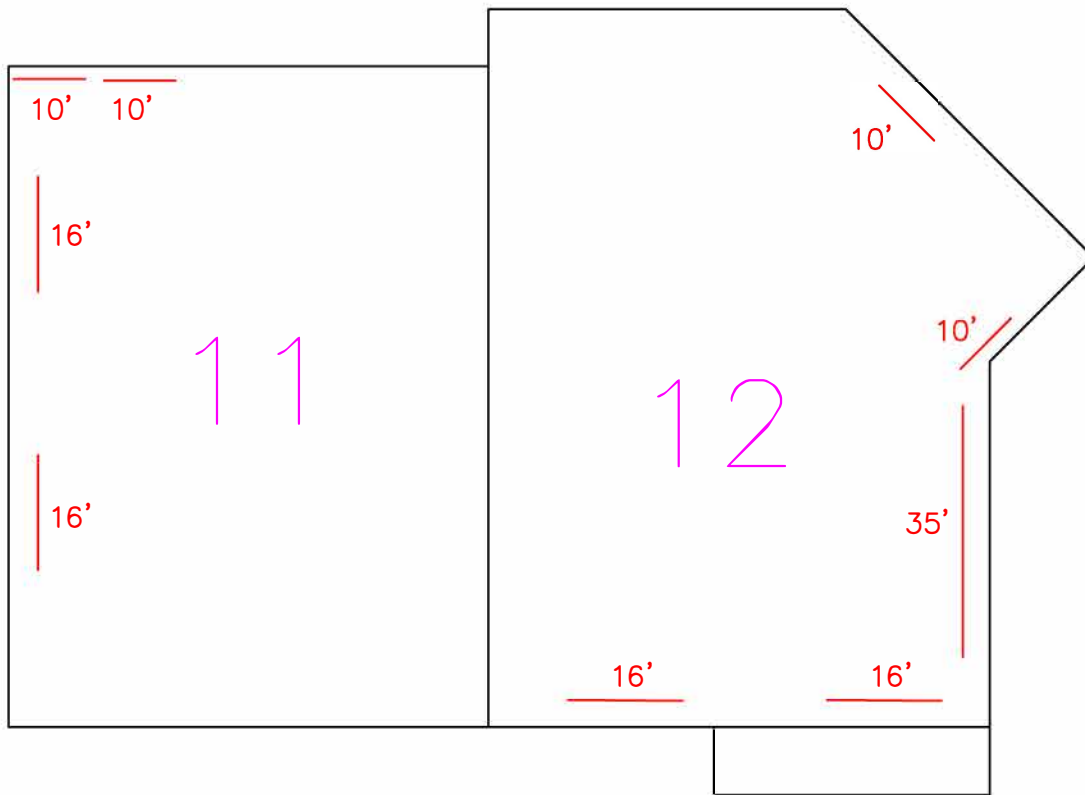
0' 5' 10' 15' 100'  
 ALL DIMENSIONS TO BE VERIFIED BY THE CONTRACTOR



1 2 3 4 5 6 7 8 9 10 11 12 13 14 15 16 17 18 19 20 21 22 23 24 25 26 27 28 29

A  
B  
C  
D  
E  
F  
G  
H  
I  
J  
K  
L  
M  
N  
O  
P  
Q  
R  
S  
T  
U  
V

Safety Equipment not shown  
6 roof hatches guards  
6 hatch assist units



REVISIONS	No.	DATE	BY

NOTES:  
① New Thru wall flashing

For Construction



- LEGEND:
- PCD Parapet Wall With Metal Coping
  - ME Metal Edge in Outlier
  - MEB Metal Edge
  - TWF Thru Wall Flashing
  - EJ Expansion Joint
  - RD Roof Drain
  - HVAC HVAC Unit
  - RC Roll Curb
  - FP Flush Pan
  - SS Sill Block
  - AE Abandon Equipment - Remove



CUSTOMER: Lexington-Richland District 5		
BUILDING: HE Corley Elementary		
LOCATION: Irmo SC		
Drawing Name Cover Page	Safety Equipment	
DRAWN BY PAE	DATE DRAWN 9/9/24	Drawing # Rr5
Revision 0		



1 2 3 4 5 6 7 8 9 10 11 12 13 14 15 16 17 18 19 20 21 22 23 24 25 26 27 28 29

A  
B  
C  
D  
E  
F  
G  
H  
I  
J  
K  
L  
M  
N  
O  
P  
Q  
R  
S  
T  
U  
V



### Life Safety Plan Notes

- 1 – Fire truck access marked with a ●
- 2 – Contractor shall have full access to the general site for laydown. However a site plan shall be submitted for approval.
- 3 – All access doors that cannot be secured will require scaffolding and protection while students are present.
- 4 – All doors not being covered due to lack of work in the area still need to be marked with signage regarding construction.

REVISIONS	No.	DATE	BY

NOTES:

For Construction

**LEGEND:**

- FWC Parapet Wall With New Coping
- MEQ Metal Edge & Gutter
- RME Rolled Metal Edge
- TWF Thru Wall Flashing
- EJ Expansion Joint
- RD Roof Drain
- HVAC HVAC Unit
- RC Roll Curb
- PP Pitch Pan
- SS Soff Stack
- AE Abandon Equipment – Remove



CUSTOMER:		Lexington-Richland District 5	
BUILDING:		HE Corley Elementary	
LOCATION:		Inmo SC	
Drawing Name	Cover Page	Life Safety Plan	
DRAWN BY	DATE DRAWN	Drawing #	
FAE	7/14/25	LS1	
Revision	0		

0' 5' 10' 15' 100'  
ALL DIMENSIONS TO BE VERIFIED BY THE CONTRACTOR