



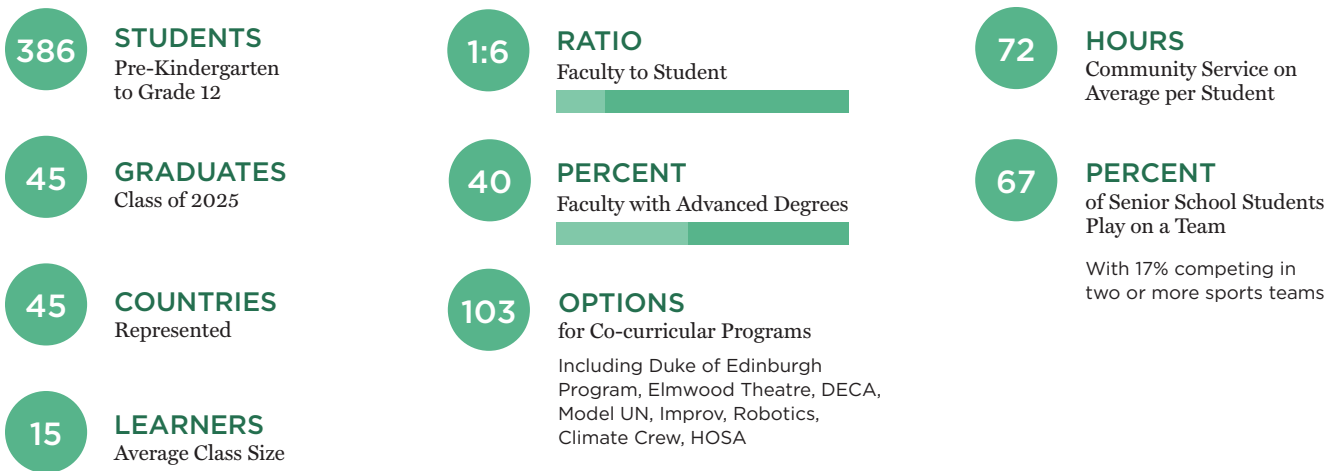
**ELMWOOD**  
SCHOOL



**Since 1915, Elmwood has been shaping what it means to be a truly remarkable girls' school. Recognized among the top independent schools in Canada, we are proud to be a national leader in intentional, exceptional education.**

Our commitment to academic excellence, individual care, and a vibrant community empowers each student to thrive—both in the classroom and beyond. Elmwood graduates are confident, capable, and deeply engaged with the world around them, earning places at leading universities worldwide and making their mark wherever they go.

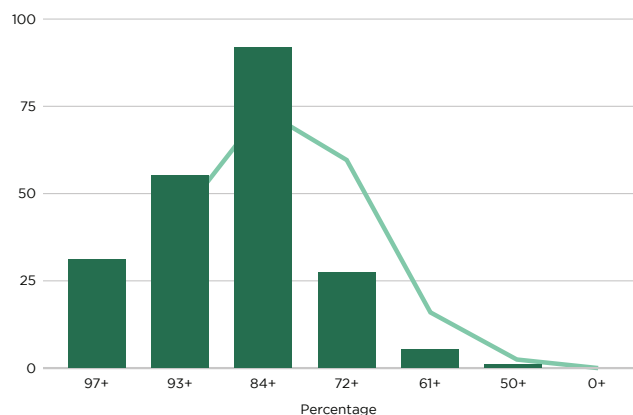
## BY THE NUMBERS



## ACADEMIC RESULTS

	2022	2023	2024	2025
IB Average	35	35	36	33.1
Highest DP Point Average	40	40	43	42
OSSD Average	87.8	89.7	90.3	91.2
Highest OSSD Average	97.6	96.7	98.3	98.7
IBDP & OSSD Students				
IDBP	7	7	10	8
IB Certificate	22	19	33	33
OSSD	44	34	41	45

## GRADE DISTRIBUTION



## Compulsory Credits

The 18 compulsory credits are noted as follows, including courses that must be taken to fulfill each group noted:

- 4 credits in English (1 per grade)
- 3 credits in Mathematics (at least 1 in Grade 11 or 12)
- 3 credits for group 1, 2 and 3 courses (1 in each group)
- 2 credits in Science
- 1 credit in Canadian History
- 1 credit in Canadian Geography
- 1 credit in the Arts
- 1 credit in Health and Physical Education
- 1 credit in French as a Second Language
- 0.5 credit in Career Studios
- 0.5 credit in Civics

### GROUP 1

English (including the Ontario Secondary School Literacy Course) or French as a Second Language, a Native Languages, First Nations, Métis, and Inuit Studies, a classical or an international language, Social Sciences and Humanities, Canadian and World Studies, Guidance and Career Education, Cooperative Education.

### GROUP 2

Health and Physical Education, the Arts, Business Studies, French as a Second Language, Cooperative Education.

### GROUP 3

Science (Grade 11 or 12), Technological Education, French as a Second Language, Computer Studies, Cooperative Education.

### ADDITIONAL REQUIREMENTS

- Completion of 40 volunteer hours
- Successful completion of the Literacy Test

## IBDP and OSSD Grade 11/12 Equivalent Courses Offered for Compulsory Credits

Groups & IBDP Courses

OSSD Subject Choice (& Equivalent)

### GROUP 1: STUDIES IN LANGUAGE & LITERATURE

HL/SL Language A: Literature (Mandarin & French)  
HL/SL Language A: Language and Literature

English Literature (ENG3U, ENG3U)  
Self-Taught (Credit will vary, depending on the Language)

### GROUP 2: INDIVIDUALS & SOCIETIES

HL/SL Economics, SL Environmental Systems & Societies,  
HL/SL History (History of the Americas)

History (CHA3U, CHY4U), Economics (CIA3M, CIA4U),  
Environmental Systems & Society (Ontario Credits, SVN3M, CGR4M)

### GROUP 3: SCIENCES

HL/SL Biology, HL/SL Chemistry, HL/SL Physics

Biology (SBI3U, SBI4U), Chemistry (SCH3U, SCH4U), Physics (SPH3U,  
SPH4U), Environmental Systems & Society (SVN3M, CGR4M)

### GROUP 4: LANGUAGE ACQUISITION

Language B: Language Acquisition (French, Spanish, Latin) comm  
Language B: Ab Initio (French)

French (FSF3U, FSF4U OR FEF3U, FEF4U), Spanish (Ontario  
Credits, LSWSCU, LWSDU), Latin (Ontario Credits, LVLCU, LVLDU),  
Mandarin (Ontario Credits, LKBCU, LKBDU)

### GROUP 5: MATHEMATICS

HL/SL Mathematics Analysis & Approaches

Mathematics HL (MCR2U, MHFU, MCV4U, MDM4U),  
Mathematics SL (MCR3U, MHF4U, MCV4U)

### GROUP 6: ARTS (OR SECOND SUBJECT FROM GROUP 2, 3, OR 4)

HL/SL Music, HL/SL Visual Arts, HL/SL Theatre

History (CHA3U, CHY4U), Economics (CIE3M, CIA4U),  
Environmental Studies & Society (Ontario Credits, SVN3M, CGR4M)

# OUR GRADUATES

Our program is designed for comprehensive university readiness, so that our graduates can thrive at the higher education institution of their dreams. We equip them with superior language education so that they may communicate with deftness and integrity.



### Academically accomplished

We emphasize research, lab, study and technology fundamentals to foster life-long learning.



### Globally minded

Our students learn in a diverse community that promotes curiosity, empathy and discernment.



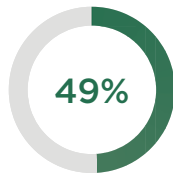
### Well-rounded and community-oriented

Outstanding writing, oration and community service builds strong leaders and contributors.

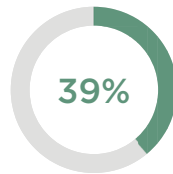


## CLASS OF 2025 Program Breakdown

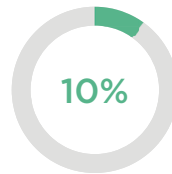
A percentage greater than 100 is a result of the students pursuing dual degrees.



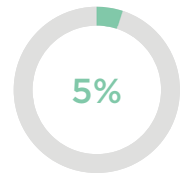
STEM



Arts, Humanities and Social Sciences



Visual and Creative Arts



Business

## 5-Year University Acceptance List

### CANADA

Acadia University  
 Algonquin College  
 Bishops University  
 Brescia University College  
 Brock University  
 Carleton University  
 Concordia University  
 Dalhousie University  
 Huron University at Western  
 Institute of Technology  
 King's University College  
 Lakehead University  
 McGill University  
 McMaster University  
 Memorial University  
 Mount Allison University  
 Mount Saint Vincent  
 OCAD University  
 Queen's University  
 Quest University  
 Simon Fraser University  
 St. Francis Xavier University  
 St. Jerome's University  
 St. Mary's University  
 St. Paul's University  
 St. Thomas University  
 Toronto Metropolitan University  
 Trent University  
 University of Alberta  
 University of British Columbia  
 University of British Columbia - Sauder School of Business  
 University of Guelph  
 University of King's College  
 University of New Brunswick  
 University of Ontario

University of Ottawa  
 University of Prince Edward Island  
 University of Toronto  
 University of Victoria  
 University of Waterloo  
 University of Winnipeg  
 Université de Sherbrooke  
 Western University  
 Western University – Richard Ivey Business School  
 Wilfrid Laurier University  
 York University

### UNITED STATES

Albion College  
 American University  
 American University of Cairo  
 Auburn College  
 Baylor University  
 Boston University  
 Bryn Mawr College  
 De Paul University  
 Emory and Henry College  
 Florida State University  
 Fordham University  
 George Washington University  
 Georgia Institute of Technology  
 Harvard University  
 Hawaii Pacific University  
 Hobart William Smith College  
 Houghton College  
 Kennesaw State University  
 Lebanese American University  
 Massachusetts College of Pharmacy and Health Science  
 Massachusetts Institute of Technology

Miami University Ohio  
 Mount Holyoke College  
 New School University  
 New York University  
 Northeastern University  
 NYU Tisch School of the Arts  
 Ohio State University  
 Penn State University  
 Pepperdine University  
 Plymouth State University  
 SUNY Potsdam  
 SUNY Stony Brook University  
 Salve Regina University  
 Savannah College of Art and Design  
 Seton Hall University  
 Skidmore College  
 Smith College  
 Southern Methodist University  
 St. Lawrence University  
 Sweet Briar College  
 Syracuse University  
 Temple University  
 Texas A&M University  
 UC Berkeley  
 UC Riverside  
 UC Santa Barbara  
 UC Santa Cruz  
 University Austin Texas  
 University Southern California  
 University of Alabama  
 UC Davis  
 UC San Diego  
 University of Cincinnati  
 University of Colorado Boulder  
 University of Connecticut  
 University of Delaware  
 University of Denver

University of Georgia, Athens  
 University of Kentucky  
 University of Massachusetts Amherst  
 University of Michigan  
 University of New Hampshire  
 University of North Carolina at Chapel Hill  
 University of Puget Sound  
 University of Rhode Island  
 University of Rochester  
 University of South Carolina – Columbia  
 University of South Florida – Main Campus  
 University of Vermont  
 University of Washington  
 University of Windsor  
 Wake Forest University  
 Wayne State University  
 Yale University

### IRELAND & THE UK

Aston University  
 Birkbeck, University of London  
 Brunel University London  
 Cardiff University  
 City, University of London  
 Durham University  
 Groningen  
 Lancaster University  
 London School of Economics  
 Newcastle University  
 Royal College of Surgeons in Ireland  
 Royal Holloway, University of London  
 Royal Veterinary College, University of London  
 Trinity College of Dublin  
 University College London

University College of Dublin  
 University of Birmingham  
 University of Brighton  
 University of Bristol  
 University of Durham  
 University of Edinburgh  
 University of Exeter  
 University of Glasgow  
 University of Kent  
 University of King's College  
 University of Leeds  
 University of Manchester  
 University of Oxford  
 University of Southampton  
 University of St Andrews  
 University of Stirling  
 University of Surrey  
 University of Sussex  
 University of Warwick  
 University of Westminster  
 University of York

### OTHER REGIONS

AMD (Academy of Fashion and Design) - Munich  
 École Supérieure de Commerce de Paris  
 Gliion Institute of Higher Education  
 Gulf Medical University  
 Jönköping University  
 Leiden University  
 Maastricht University  
 Medical University of Bahrain  
 Royal College of Surgeons  
 Sciences Po  
 University of Amsterdam  
 Vrije University - Amsterdam



**ELMWOOD**  
 SCHOOL

Proud member of Canadian Independent School Counsellors (CISC) and the International Association for College Admission Counseling (IACAC)

#### Key Contacts

**James Whitehouse**  
 Head of School

**Christina Schindler**  
 Principal, Middle and Senior School

**Alyson Bartlett**  
 Director of University Counselling

**Address** 261 Buena Vista Rd, Ottawa, Ontario K1M 0V9

**Phone** (613) 749-6761