



CPES Harvest Happenings

September 29th: School Community Newsletter

🍏 🍏 Field Trip TOMORROW, Tuesday, 9/30 🍏 🍏

It's almost time for our trip to Eastmont Orchards for apple picking! As a friendly reminder, the trip is **tomorrow, Tuesday, 9/30**. We plan to leave CPES at approximately **9:30 AM** and return at approximately **11:30 AM**. We will be embarking on our adventure to **Eastmont Orchards, 321 County Rd 537, Colts Neck, NJ 07722**, with our **CPES Husky Pups & Pack Leaders**. We are so excited for our husky pops to enjoy a trip to the apple orchard teaches our young students about where their food comes from, the wonder of nature, and the joy of a hands-on harvesting experience. Each learner will be able to pick up to 3 apples!



Important Reminders:

- **Dress the Part.** Have your little one wear closed-toe shoes and clothes that can get a little dirty. Layers are a great idea, too, as the morning can be chilly and the afternoon warm. ***Also, please have your child wear CPES spirit wear OR school colors.***
- **Be on Time.** To make sure we don't miss our bus, please be on time on the day of our trip.

School is Closed 10/2

There will be **NO** school on Thursday, 10/2 for students and staff in observance of Yom Kippur.

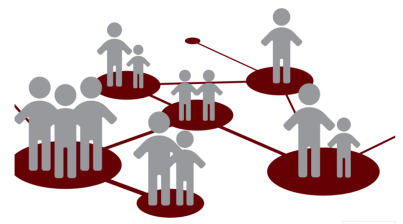
School will resume on Friday, 10/3 following a full day schedule.

School doors will open at 8:35 AM, our day will begin at 8:45 AM, and dismissal will be at 3:00 PM.



Want to Join the MARSD Family?

We are excited to share that our school district is looking for part-time Kindergarten aides to join our team. This position will support our youngest learners in the classroom, help with daily routines, and foster a caring and positive environment. If you or someone you know enjoys working with children and is interested in making a difference, please apply using this [link](#).



🔴 Dismissal Procedure: Reminder 🔴

For everyone's safety, I kindly ask that our school community families follow the dismissal routes outlined in our [arrival and dismissal plan](#). **By keeping to the flow of traffic, we can ensure a smooth and safe dismissal process for all members of our school community.**

Thank you for helping keep everyone safe!

Health Screenings by Nurse Lexi



Welcome Back!
I am Mrs. Johnson, RN the Cambridge Park School Nurse.
I am available at ajohnson@marsd.org or 732-705-4056.

It's a good time to share the required annual health screenings that will be completed throughout the year.

Each school district shall ensure that all students are provided with the opportunity to receive health screenings conducted by a school physician, school nurse, or other school personnel properly trained pursuant to N.J.A.C. 6A:16-2.2(i). The required screenings are outlined in the chart below.

Height, Weight, Vision, Hearing, Dental	Pre-K students
Height, Weight, Blood Pressure	All students K-12
Vision	Grades K,2,4,6,8,10
Hearing	Grades K-3, Grades 7 and 11
Scoliosis	Ages 10-18, Biennially

If at any time, the parent chooses to decline these screenings, a written request must be sent to the attention of the school nurse.

Parents will be notified, in writing, of any screening results that are outside of the normal parameters.

Looking forward to a Healthy, Happy School Year!

Pursuant to N.J.A.C. 6A:16-2.2(i), each school district must ensure that all students are given the opportunity to receive health screenings. These screenings may be conducted by a school physician, school nurse, or other properly trained school personnel. At CPES, our nurse, Nurse Lexi, will be conducting your child's health screening.

The picture chart to the left identifies the required screenings. Please reach out to Nurse Lexi at ajohnson@marsd.org with any questions.

Flu Vaccination Requirement for Preschoolers

As part of New Jersey state health regulations (N.J.A.C. 8:57-4), all preschool students are required to have up-to-date immunizations to attend school, including proof of the annual flu vaccine.

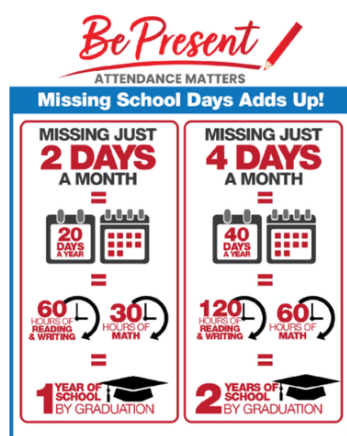
IMPORTANT

Please be sure to submit documentation of your child's flu vaccination by **December 15th**. *Without this documentation, we will not be able to allow your child to return to school in January, and unfortunately, their spot may be offered to another student on our waiting list.*

You can send proof of vaccination to our school nurse, **Ms. Johnson**, at AJohnson@marsd.org

Thank you for helping us keep our school community healthy and safe!

The Power of Being Present: Attendance Matters



Why is it so important for your preschooler to be present at school?

Being present every day in preschool helps children build routines, friendships, and important early learning skills. Missing just 2 to 4 days a month may not seem like much, but it adds up to nearly a month of lost learning time over the year. Regular attendance also gives children daily chances to practice social skills, make friends, and feel part of the classroom community. Let's partner together to make sure your child is here each day, building a strong foundation for future success!

Family Need & Assistance Survey

As part of the CPES family, we're here to support one another. We believe that when our community thrives, every family within it has the opportunity to succeed. If your family could benefit from additional resources or assistance, whether related to academic support, basic needs, community connections, or other areas, please complete [this](#) form so we can work together to connect you with support in whatever ways we're able to help.

***Please note:** Your responses will be kept confidential and will only be used to better understand how we can serve our families. There



is no obligation, and completing this form simply helps us identify opportunities where we might be able to provide meaningful support. We're grateful to be part of this community with you, and we're committed to doing what we can to help every CPES family thrive. Please know that reaching out is a sign of strength and community engagement. We all need support at different times, and we're honored to be a resource for our families when possible!

.....

Cambridge Closet



Our CPES community has embraced the Cambridge Closet (CC) with such warmth and generosity! We're excited to share that the donations have been pouring in, and we're continually amazed by the kindness and support of our school family. The Cambridge Closet continues to welcome donations of gently used clothing in sizes **3T-6X, shoes, and new underwear and socks**. Whether it's pants, shorts, or shirts, every item makes a difference in supporting our students and families. This initiative exemplifies what makes our CPES community special: we are there each

other! Thank you for helping make our CC a success!

.....

CPES Halloween Parade

Friday, October 31st @ 9:30 AM

The Halloween Parade is an exciting tradition that gives our preschoolers a chance to dress up, use their imaginations, and celebrate a memorable experience with friends and families! It's a fun way for us to build community, encourage creativity, and make lasting memories. While we enjoy the festive spirit, keeping our children safe is always our top priority.

Some important details regarding the CPES Halloween Parade include:

- **Time:** 9:30 AM
- **Location:** The front of CPES
- **How to Watch:** There will be designated areas for families to watch and celebrate in the fun of Halloween! These locations will be shared at a later time with the school community.



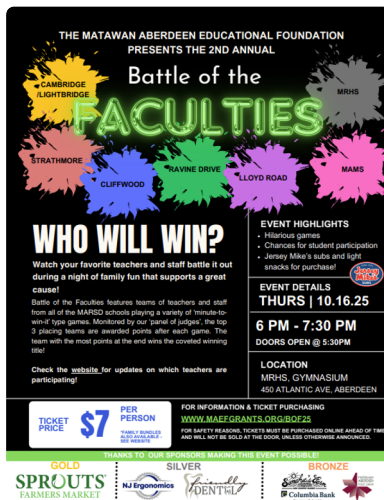
To help us celebrate safely, please remember to:

- Send your child to school in a costume that is easy to move in and bathroom-friendly (no masks or props, please).
- Label all costume pieces with your child's name.
- Make sure your child wears comfortable shoes for walking.

- Stay in designated areas during the parade (as outlined in the picture below) and follow staff directions. The path and parent areas to watch the parade will be marked off.

As a reminder, **Friday, October 31st is 4-hour day with a dismissal at 12:45 PM.** Thank you for helping make this a safe and special day for everyone!

Battle of the Faculties



The **Battle of the Faculties** is back, and it's time to settle the score! **Who among the MARSD staff will rise to the top and claim the title of the district's most dominant team? Will it be the reigning champs from Strathmore Elementary School, or will it be our own team representing Cambridge Park Elementary School, the Alpha Pups?**

Please see below important information regarding Battle of the Faculties:

- **Date:** Thursday, October 16th
- **Time:** 6:00 - 7:30 PM
- **Location:** MRHS Gymnasium, 450 Atlantic Avenue, Aberdeen, NJ

07747

- **Tickets:** Tickets must be purchased online so we can safely control attendance numbers at <https://www.maefgrants.org/bof25>

We hope to see you there cheering on our staff!

Governor's Educator of the Year: Nominations

The Matawan-Aberdeen Regional School District is proud to once again participate in the New Jersey Governor's Educator of the Year (GEOY) Program, which honors outstanding teachers and educational services professionals. **Do you know an educator who is dedicated, inspiring, and making a difference?** We invite administrators, staff, students, parents, and community members to submit nominations using the GEOY form by Saturday, November 15, 2025, to the building principal.

Each school will recognize one teacher and one educational services professional, with honorees moving on for county, state, and even national recognition. Please see below important information regarding the Governor's Educator of the Year (GEOY) Program:

- [Nomination Form](#)



- [Eligible Criteria](#)

*Please visit on our district website at: www.marsd.org for addition information.

Please nominate the educators who have made a positive impact on your child's learning journey. Thank you for your support and continued collaboration!

Week of Respect - 10.6 - 10.10



Next week, we will join together as a school community to celebrate the **Week of Respect**.

This special week is dedicated to *promoting kindness, empathy, and positive relationships*.

Each day, we will focus on simple yet meaningful ways to **show respect and care for one another**.

Please see the graphic for the different ways our school will be coming together to celebrate!

PTO Corner

The Cambridge Park Elementary School PTO plays a key role in supporting students and staff. By joining, parents can directly contribute to events, fundraisers, and programs that enhance the school experience. The PTO raises funds for classroom supplies, extracurricular activities, and school improvements, helping create a better learning environment for all students.

Please see below important announcements and information from the CPES PTO:



- **Stay Connected:** Follow along on social media!
 - **Instagram:** @ptocambridgepark
 - **Facebook:** Search "Cambridge Park PTO" & request to join the group!
- **Save the Dates:** Thanks to our PTO, there's lots of excitement happening at CPES! Don't forget to check out the flyers below and join us for upcoming events!
- **Husky Pup Gear:** Show your school spirit by ordering CPES Husky Pup gear! **Orders are due tomorrow, Tuesday, September 30th** (no exceptions).

**If you are interested in joining the PTO, please reach out to PTO President Ms. Dana Bradfield.*



Events Sept. - Dec.

Like to plan ahead? Check out the exciting things we have planned from Sept. - Dec.!



CPES PTO Membership

Thinking about joining the CPES PTO? Check out for more information!



Harvest Fest

Looking for some fall activities to do with your family? Come join us at Harvest Fest!



Harvest Fest Raffle

Looking for a way to boost your business and give back to our community? Check out the Harvest Fest Raffle!



Mum Sale

Planning to decorate with mums for the fall season? Please consider our CPES PTO Mum Sale!



Food Drive

Let's join together for the CPES PTO food collection for the Matawan Community Food Pantry!



Park Meet-Up

Want to come back to school for some playground fun? Join us for our next Park Meet Up!



Dine Out for CPES!

Missing summer? Join us for a sweet treat before the cold weather kicks in!

Important Dates to Remember - September:

- Monday, September 29th: RAM BOE Meeting @ MRHS (6:30 PM)
- Tuesday, September 30th: Field Trip (Apple Picking @ Eastmont Orchards)

- **Tuesday, September 30th:** Last Day to Order CPES Spirit Wear

Important Dates to Remember - October:

- **Thursday, October 2nd:** Yom Kippur (School is **CLOSED**)
- **Friday, October 3rd:** Breast Cancer Awareness (Wear *Pink*)
- **Friday, October 3rd:** Husky Pup Name Submissions Due!
- **Monday, October 6th through Saturday, October 18th:** PTO Food Pantry Collection
- **Tuesday, October 7th:** PTO Meeting @ CPES Gymnasium (7:00 PM)
- **Friday, October 10th:** World Mental Health Day (Wear *green*)
- **Monday, October 13th:** No School for Students ONLY
- **Monday, October 13th:** RAM BOE Meeting @ MAMS (7:00 PM)
- **Wednesday, October 15th:** Global Handwashing Day (Wear *blue*)
- **Wednesday, October 15th:** CPES PTO Park Meetup @ Andover Park (6:00 PM)
- **Thursday, October 16th:** Cambridge Park Pumpkin Patch (during the school day)
- **Saturday, October 18th:** Harvest Fest (1:00 - 4:00 PM)
- **Saturday, October 18th:** Trunk or Treat @ Harvest Fest (1:00 - 4:00 PM)
- **Thursday, October 23rd:** Ralph's Italian Ices & Frozen Yo Cafe Dine Out (6:00 - 9:30 PM)
- **Friday, October 24th:** CPES Spirit Day (Wear your CPES gear *OR* school colors)
- **Friday, October 31st:** Halloween Parade @ CPES (9:30 - 9:40 AM)
- **Friday, October 31st:** 4-Hour School Day (12:45 PM dismissal)



Dr. P

Supervisor of Cambridge Park Elementary School



Dr. Paone-Hurd brings a decade of experience in education to the Cambridge Park Elementary School community. Now, as a proud member of the Cambridge Park team, Dr. Paone-Hurd is excited to bring her knowledge and passion to help every student thrive in our preschool building!