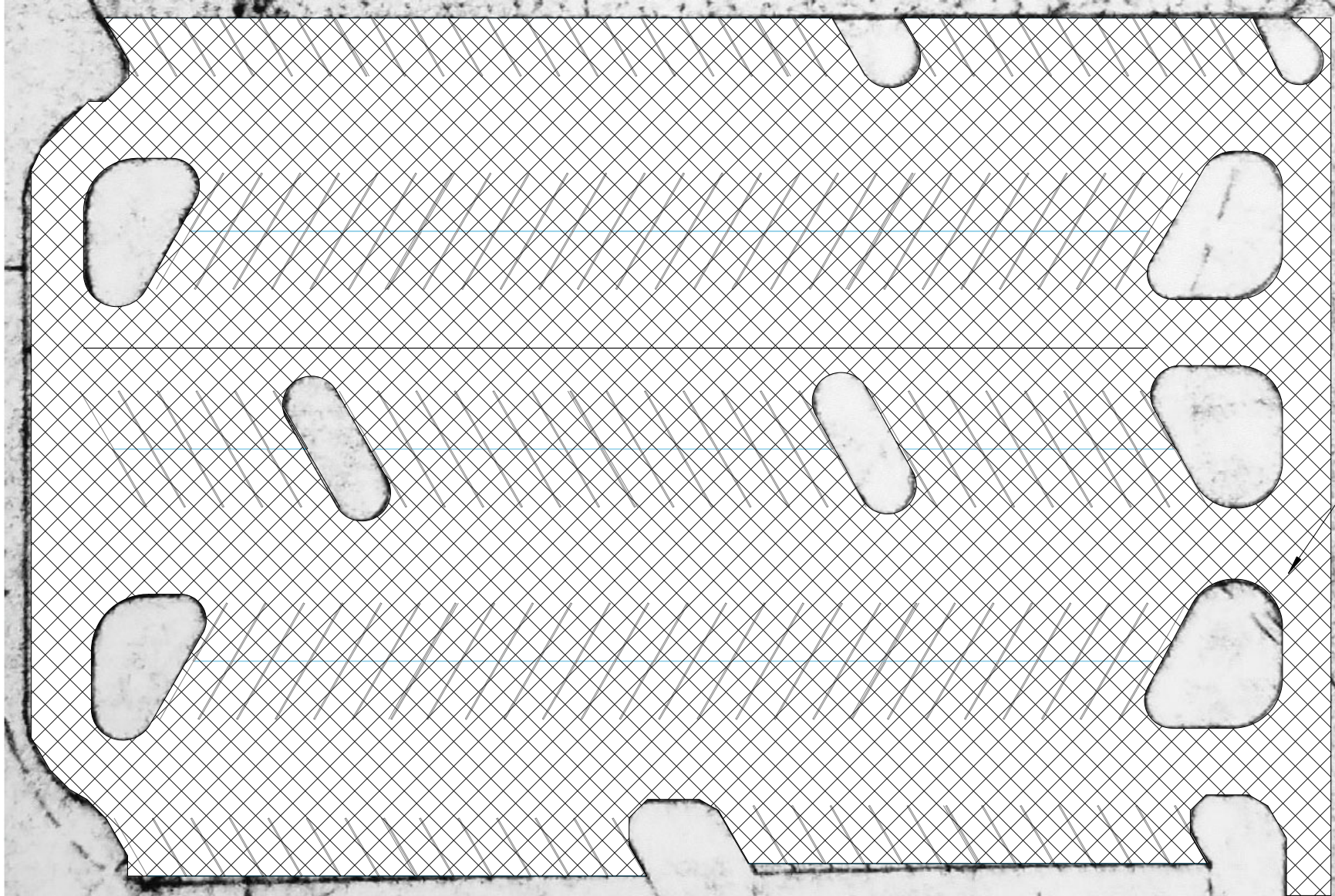
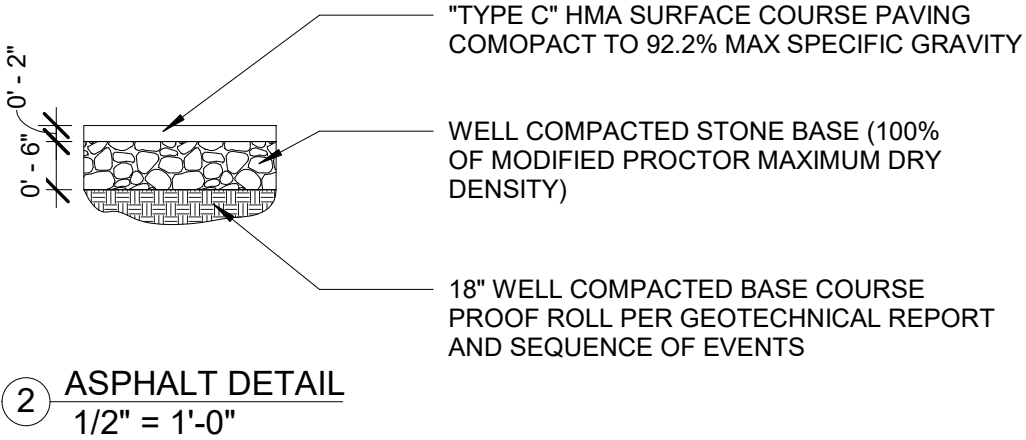


MULLINS HIGH SCHOOL
747 MILLERS ROAD, MULLINS, SC.....202 PARKING SPACES



1 MULLINS HIGH SCHOOL PARKING LOT
1" = 40'-0"



NEW PAVING 71,750 SQFT

1. THIS PROJECT INVOLVES THE RE-SURFACING OF A PORTION OF EXISTING PAVING AT MULLINS HIGH SCHOOL AT 747 MILLERS ROAD, MULLINS, SC.
2. THE INTENT OF THIS WORK IS TO MAINTAIN THE GRADES AND DRAINAGE THAT ARE CURRENTLY EXISTING ON THE SITE. IF LOCAL "LOW SPOTS" ARE ENCOUNTERED, THE CONTRACTOR IS RESPONSIBLE FOR LEVELING THE BASE PRIOR TO PLACEMENT OF ASPHALT.
3. SHOULDERS ARE TO BE RE-SHAPED TO SLOPE TO DRAIN AND ARE TO BE GRASSED PER SCDOT REQUIREMENTS.
4. ALL PARKING SPACES ARE TO BE STRIPED WITH THERMOPLASTIC STRIPING.
5. IF EXISTING CONCRETE SURFACES ARE DAMAGED DURING THE STRIPPING OF THE EXISTING SURFACE, IT IS THE RESPONSIBILITY OF THE CONTRACTOR TO REPAIR THE DAMAGE.
6. CONTRACTOR SHALL BE PAID BASED ON THE AMOUNT OF ASPHALT THAT IS ACTUALLY PLACED. CONTRACTOR TO SUBMIT TICKETS FOR APPROVAL OF QUANTITIES USED.



1330 LADY STREET SUITE 500
COLUMBIA, SOUTH CAROLINA 29201

All rights reserved. This drawing
and the design shown thereon are
copyright as prescribed by the laws
of the United States and are the
property of Brownstone Design.

SHEET TITLE
?

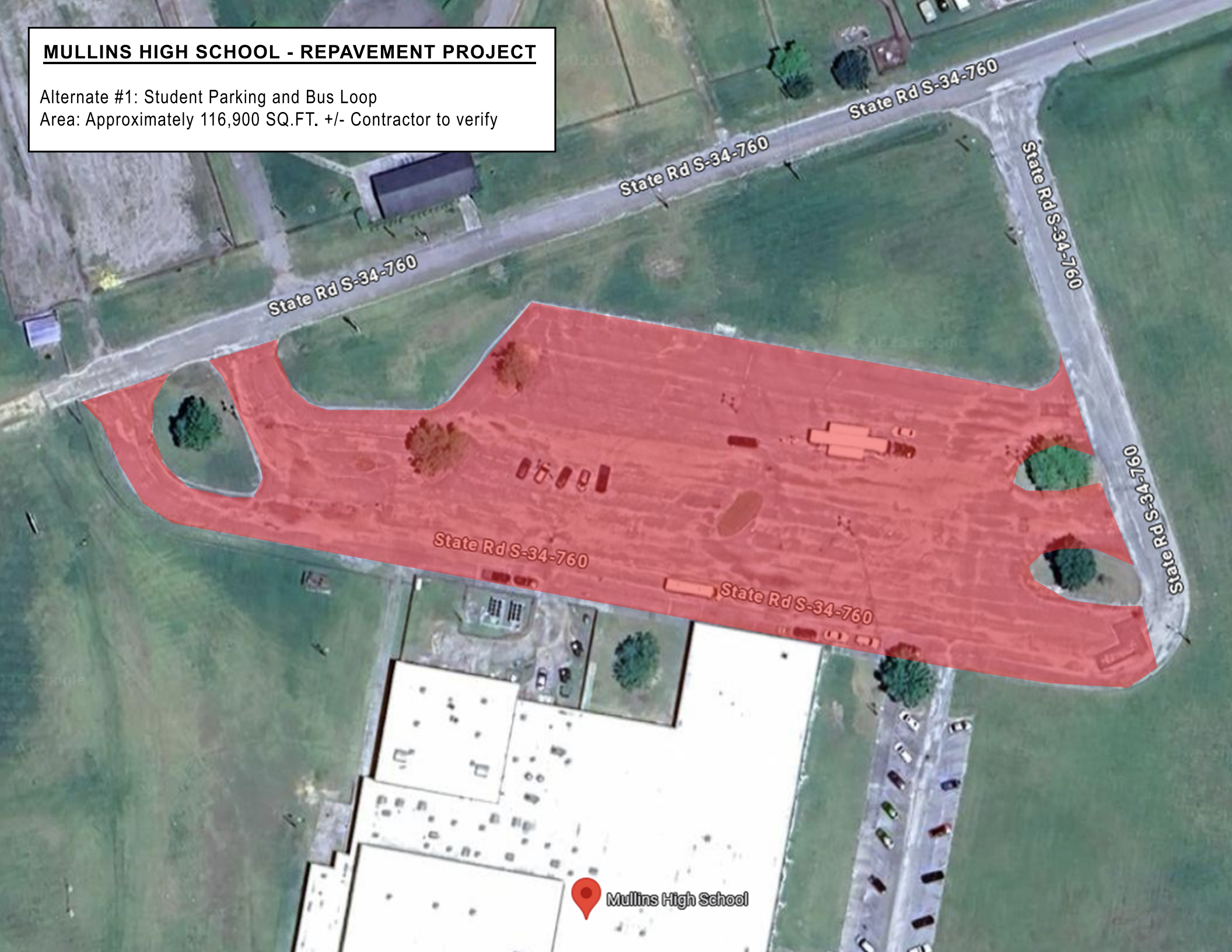
SHEET NO.
?

PROJECT TITLE: ?
CLIENT: ?
ISSUED FOR: ?
DATE: ?
DRAWN BY: ?

MULLINS HIGH SCHOOL - REPAVEMENT PROJECT

Alternate #1: Student Parking and Bus Loop

Area: Approximately 116,900 SQ.FT. +/- Contractor to verify



MULLINS HIGH SCHOOL - REPAVEMENT PROJECT

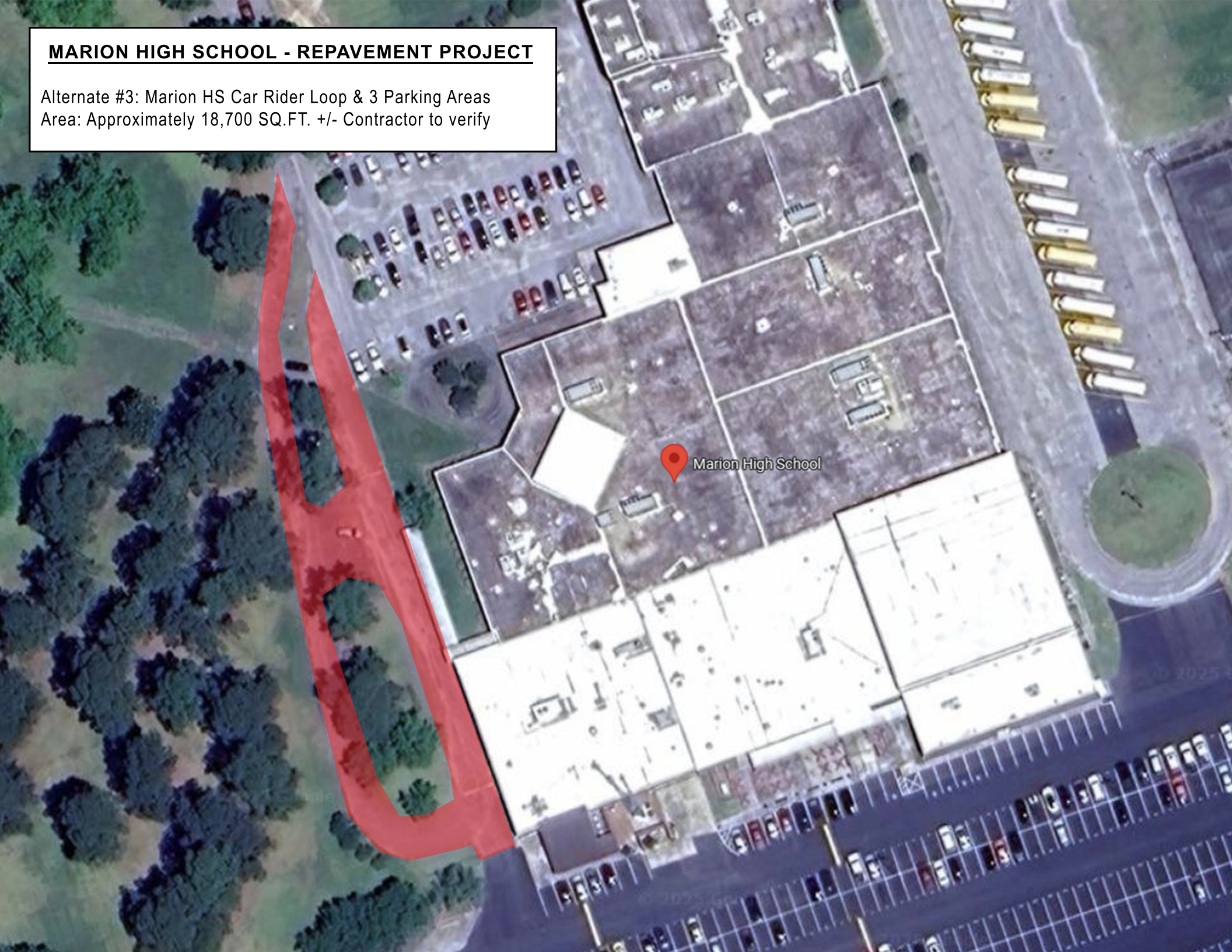
Alternate #2: 57 Parking Spaces

Area: Approximately 16,900 SQ.FT. +/- Contractor to verify



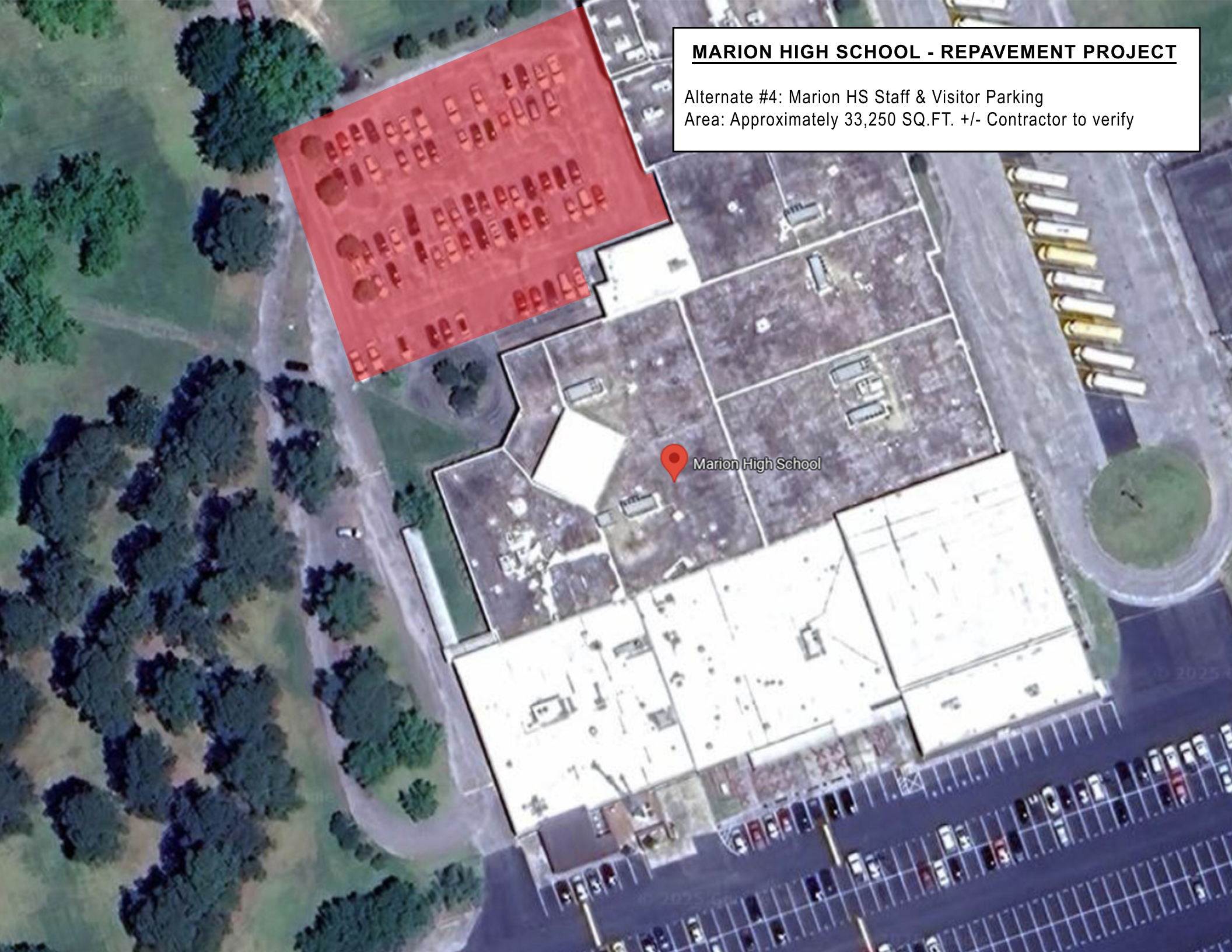
MARION HIGH SCHOOL - REPAVEMENT PROJECT

Alternate #3: Marion HS Car Rider Loop & 3 Parking Areas
Area: Approximately 18,700 SQ.FT. +/- Contractor to verify



MARION HIGH SCHOOL - REPAVEMENT PROJECT

Alternate #4: Marion HS Staff & Visitor Parking
Area: Approximately 33,250 SQ.FT. +/- Contractor to verify



MARION HIGH SCHOOL - REPAVEMENT PROJECT

Alternate #5: Marion HS Main Entrance Drive

Area: Approximately 15,470 SQ.FT. +/- Contractor to verify

