



Superintendent Report

September 8, 2025

District Updates:

- Trustee Elections November
- Homecoming 2025 September
- Student Count Pre-School through 13th Grade
 - 2508
 - Kindergarten and first grade class sizes are the smallest in the district at 153 and 154
 - 8th Grade and 9th Grade have the largest class sizes at 214 and 225
- Emmett School District will move classification in the Fall of 2026 from 5A to 4A classifications for the next two-year cycle
- District Elementary Schools were awarded the Fresh Fruit and Vegetable Grant for the 2025-2026 school year
- The second full-time SRO is on campus and assigned to Emmett Middle School
- Radio Communication Federal Grant Award
 - Repeater issues have delayed the full implementation county-wide
- Work Group Possible Topics
 - Elementary Configuration 2025-2026
 - District Buildings and Growth
 - Other

District Academics

- The Fall K-3 Reading Assessment “AMIRA” will take place in October
- All budgeted certified staffing positions have been filled as of today
- Professional development day for all staff, September 12th
 - District Book Study “Leadership and Self Deception”
 - Regional Math Center Year 2 district-wide math professional development
- Draft [Superintendent and Board Goals](#)
- Dr. Uriarte is working on a three-year math plan focused on grades 5-8
- District Professional Development
 - FACE Conference Community Schools Coordinators (Family and Community Engagement Conference)
 - ISBA Conference Board Trustees, Board Clerks (Idaho School Board Association)
 - K-3 SMART training (Striving to Meet Achievement in Reading Together)

Emmett School District



District Maintenance Projects

- Restroom update EHS Campus Completed
- EMS Asphalt and a new fence were completed on the east side of the building
- EHS Dome foundation survey (next step in determining building stability)
- EHS Gym PA system upgrade completed
- Idaho Department of Transportation and Gem County Highway are working on a stoplight at Mill and Highway 52. Preliminary plans include a right-turn dedicated lane onto Mill Road for our transportation.
 - The project will require a board approval of easements for this dedicated lane behind our baseball fence. Maintenance has marked current sprinkler locations for this project

Emmett School District Future Maintenance Priorities

- True North Academy
 - Sawtooth Survey is supporting the district in the city annexation application
 - CM Construction will provide support for the project
- Butte View Elementary Gymnasium
- Elementary Playground surface projects
- Carpet removal and replacement all buildings
- EMS Auditorium Sound system, lighting, and seating updates
- EHS Parking lot asphalt (see images)
- EHS Dome Exterior Concerns (see images)
- EHS Gym Ceiling removal and replacement
- EHS 2nd and 3rd floor restroom update
- EMS Asphalt South side playground area
- EHS irrigation water intake update

Payette River Regional Technical Academy Authorizer Update

- PR²TA has paid in full the Service Agreement for 2024-2025
- Initial estimate EHS, EMS students taking CTE: FTE 130
- Initial estimate of PR²TA Academics is 150 students
- Concerns with student traffic during 5th period are being addressed with Mr. Parks and Mr. Goff.
- Mr. Hyde and I will meet biweekly with Mr. Goff throughout the school year

Emmett Dome B Images September 5, 2025



The following images show the splits and wholes in the 2014 repair of the dome exterior. The large split is where the repair patch has separated from the dome. Close inspection of the dome exterior shows a large number of splits and holes in the dome surface that allow water to penetrate and is causing a number of issues. The repairs are still under warranty, and I will reach out to the company that completed the repairs back in 2014. It appears that a number of the penetrations are man-made, so it is doubtful the lower 10-15 feet of the dome repair would be honored under the warranty.



Emmett School District

119 N. Wardwell Avenue, Emmett, Idaho 83617

208-365-6301

info@isd221.net

emmettschools.org



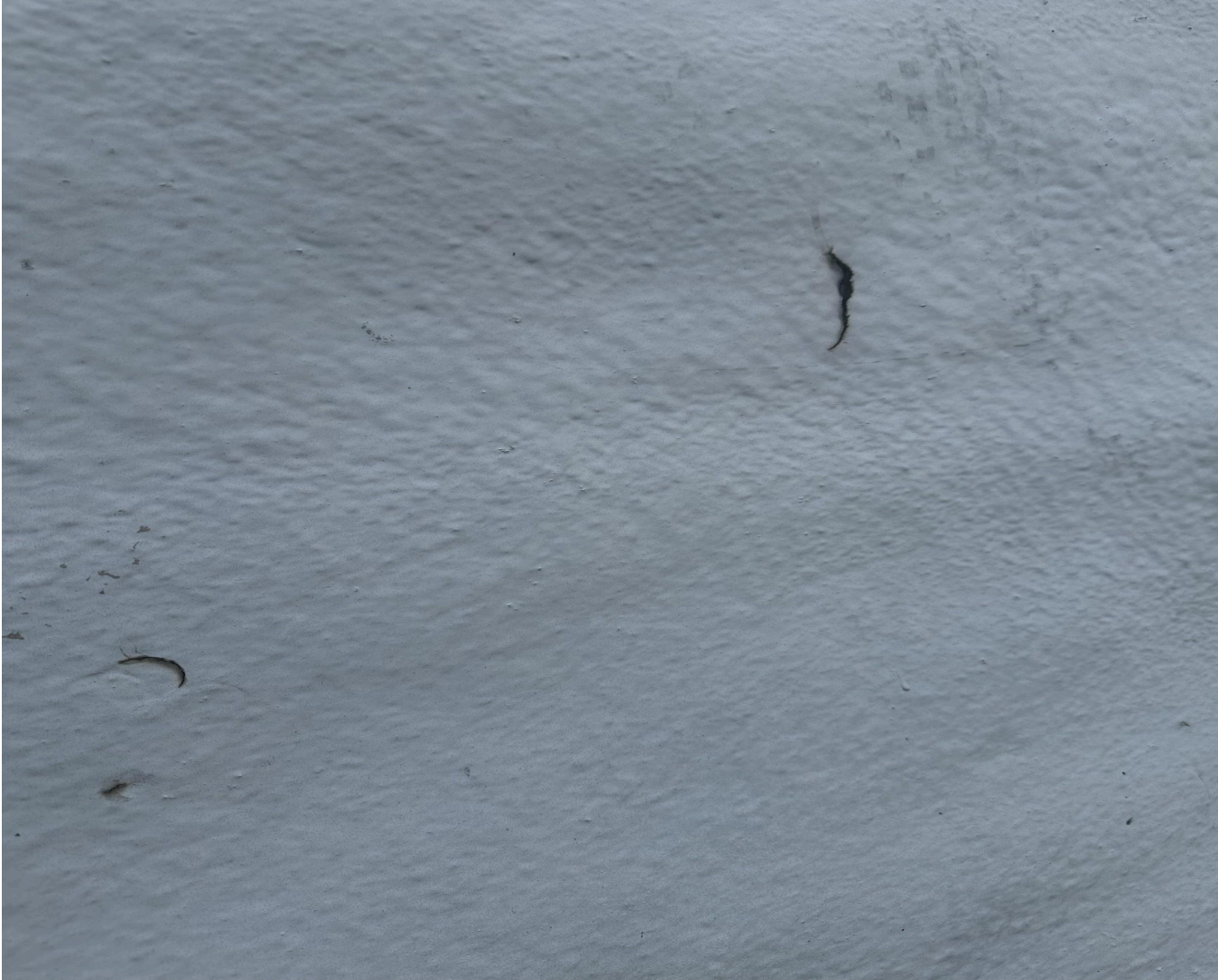
Emmett School District

119 N. Wardwell Avenue, Emmett, Idaho 83617

208-365-6301

info@isd221.net

emmettschools.org



Emmett School District

119 N. Wardwell Avenue, Emmett, Idaho 83617

208-365-6301

info@isd221.net

emmettschools.org



Emmett School District

119 N. Wardwell Avenue, Emmett, Idaho 83617

208-365-6301

info@isd221.net

emmettschools.org



Emmett School District

119 N. Wardwell Avenue, Emmett, Idaho 83617

208-365-6301

info@isd221.net

emmettschools.org



Emmett School District

119 N. Wardwell Avenue, Emmett, Idaho 83617

208-365-6301

info@isd221.net

emmettschools.org



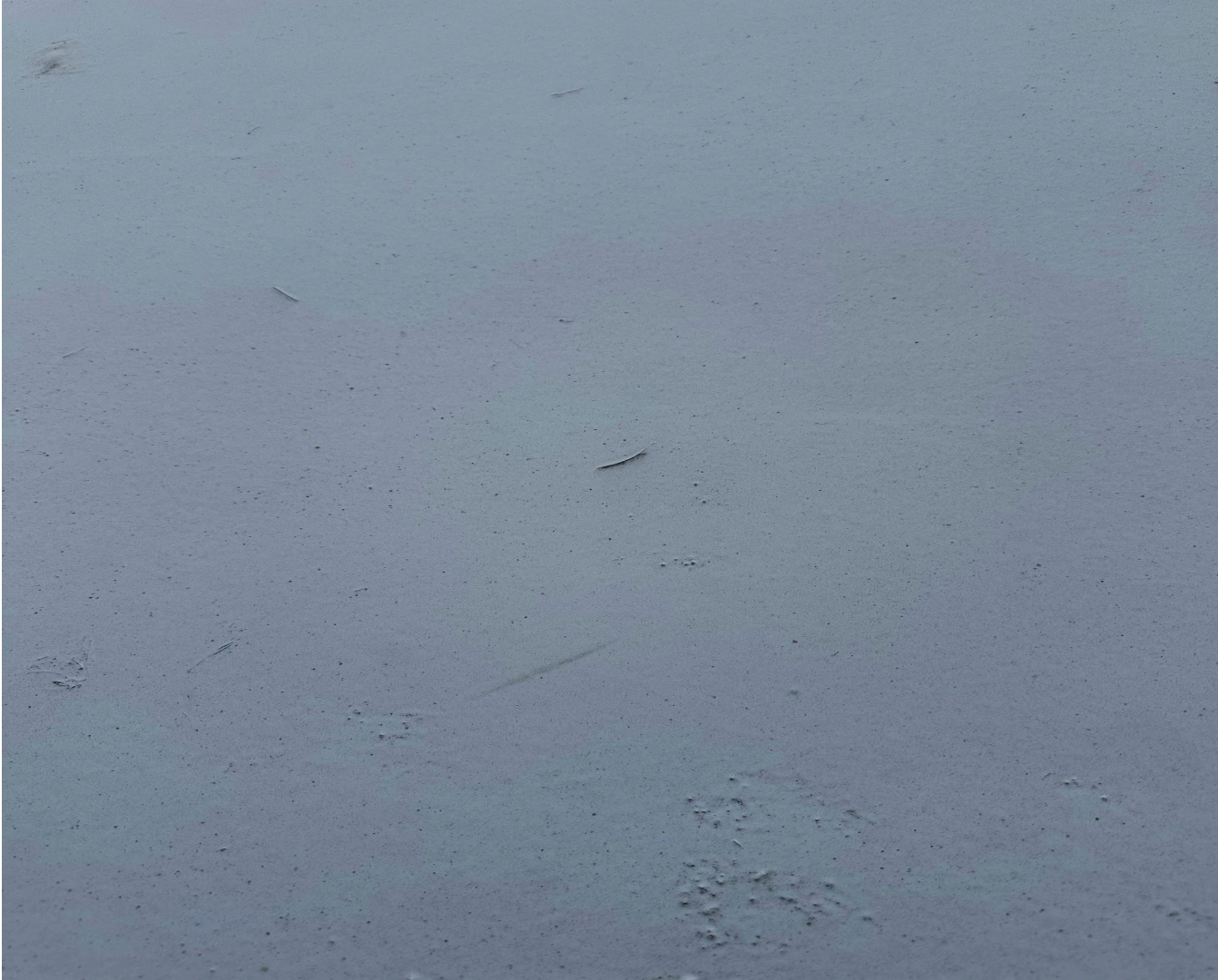
Emmett School District

119 N. Wardwell Avenue, Emmett, Idaho 83617

208-365-6301

info@isd221.net

emmettschools.org



Emmett School District

119 N. Wardwell Avenue, Emmett, Idaho 83617

208-365-6301

info@isd221.net

emmettschools.org