

Westport Public Schools – Retractable Gymnasium Folding Door Replacement at Saugatuck Elementary School 26-008-RFP-Addendum No. 1

Original Issue Date: 9/3/2025

Changes to Request for Proposal

1.	MODIFY	As Thursday, October 2, is a holiday for the school district and the town offices are closed, the bid due date has been moved to Friday, October 3, at 2:00 p.m. EST. Refer to the Revised Fee Proposal Form -to be completed in full
1.	ADD	Substitution request-Moderco Operable partition Model Excel 733-EG
1.	DELETE	None

Proposal Questions

Question #1 Can a substitution be made to include the Moderco operable partition "Model Excel 733-EG"?

Response **Yes, this operable partition system is acceptable as an "or equal" substitute. The respective Product Brochure Information and Technical Data Sheet are included as attachments to this addendum.**

Attachments

Westport Facilities Department Sign-in Sheet
Colliers Project Leaders Sign-in Sheet
Revised EXHIBIT 1 - Fee Proposal Form (Bids are now due by Friday, October 3, at 2:00 p.m.)
Moderco Model Excel 733-EG Product Brochure Information
Moderco Model Excel 733-EG Technical Data Sheet

EXHIBIT 1 – Fee Proposal Form

Westport Public Schools
Retractable Gymnasium Folding Door Replacement at Saugatuck Elementary School
26-008-RFP

REVISED BID DUE DATE = Friday, October 3, 2025, at 2:00 p.m. EST

Scope of Work	Fee
Furnish and install the new operable wall and electric controls.	\$
As necessary, costs for any structural modifications required to support the new panel system.	\$
Total Fee	\$
Reimbursable Expenses Not Included in Fees Above:	\$

Receipt Confirmation of Issued Addendum:

Addendum #1 _____ Dated _____
Addendum #2 _____ Dated _____

Print Name (Authorized Representative of Company) Date

Signature (Authorized Representative of Company) Date

**WESTPORT PUBLIC SCHOOLS
MANDATORY WALK-THRU SIGN IN**

**BID/RFP NO: 26-008-RFP SES Retractable Gymnasium Folding Door Replacement
DATE: Tuesday, September 16, 2025, 3:00PM, Saugatuck Elementary School**

PLEASE PRINT LEGIBLY

PLEASE SUBMIT BUSINESS CARD

NAME	COMPANY/FIRM	E-MAIL	MOBILE/FAX#
John Kopras	COWERS PROJECT LEADERS	JOHN.KOPRAS@COWERSENG.COM	860-250-3769
Frank Mastriano	JLY Construction Managers	Frank@jlyllc.com	203-752-7824
Chris Torres	Willco sales & service	c + @willcosales.com	263-500-2317
John O'Connell	CRF	jocconnell@crfinteriors.com	
Angelo Vignatta	willco	av@willcosales.com	203 395 5799
Ted J. Hunyrd	BOE		203 341 1270



OPERABLE PARTITION

EXCEL 700



EXCEL 700 OPERABLE PARTITION

The Moderco Excel 700 series offers a technologically advanced, aesthetically pleasing design. It uses a unique welded steel frame that permits all substrates (skins) and steel to be welded to the frame. It never requires substrates or skins to be glued or mechanically attached to the frame. This construction provides a durable, unitized panel that will last for years of rugged use.

The basic panel construction is combined with wraparound finishes for a trimless, monolithic appearance. Deep interlocking vertical astragals at all panel joints align panels ensuring a smooth wall face while providing an acoustic seal.

Automatically setting and retracting bottom seals provide 2 inches of operating clearance to accommodate for floor variation.

This combination of features together with the Moderco Excel 700 series options and many varied finishes make it an outstanding choice for your applications as it combines aesthetics, acoustics, and durability in one construction.

- » Multiple contact top fixed sweep seals
- » Low profile steel hinges



EXCEL 700 OPERABLE PARTITION

- » Heavy-duty welded steel frame
- » Welded acoustical steel faces
- » Standard vinyl and fabric
- » Deep nesting reversible vertical aluminum astragal system with flexible vinyl acoustical seals



- » Vertical wrap around finish with no vertical edge trim
- » 2" (50mm) clearance automatic bottom seals
- » Adjustable bottom seals end caps

The Moderco Excel 700 series product offers numerous options including marker boards, eraser pockets, same construction pass thru doors and inset exit signs.

Consult with your local Moderco distributor or visit www.moderco.com for more details.



PANELS

Models	731	732	733-EG
Operation	Individual	Paired	Continuously hinged, electrically operated gym divider
Configuration	Remote/Side	Center	Center
Thickness	3" (77mm)		3" (76mm)
Panel Frame	Steel frame with trimless edges		Steel frame with trimless edges
STC	48, 52		43, 49
Finish Options	Vinyl, Fabric, Customer owned or specified material, Marker board, Uncovered steel		Vinyl
Max.Height	30'-3" (9220mm)	22'-3" (6780mm)	33'-3" (9220mm)
Panel Width	Min. 24" (609mm) Max. 48 1/2"(1230mm)		Min. 24" (609mm) Max. 49 1/4" (1250mm)
Panel Weight	7,5 to 8,5 lbs./sq. ft. [37 to 41.5 kg/sq.m]		4,1 to 5,1 lbs./sq. ft. (20 to 25 kg/sq.m)
Seals	Telescopic panel or hinged panel		Wall jamb or pocket doorhinged panel
Seals	FA		FV
Track	#23-T, #33-T, #72	#45-T, #55-T, #72	#80

SEALS TYPE

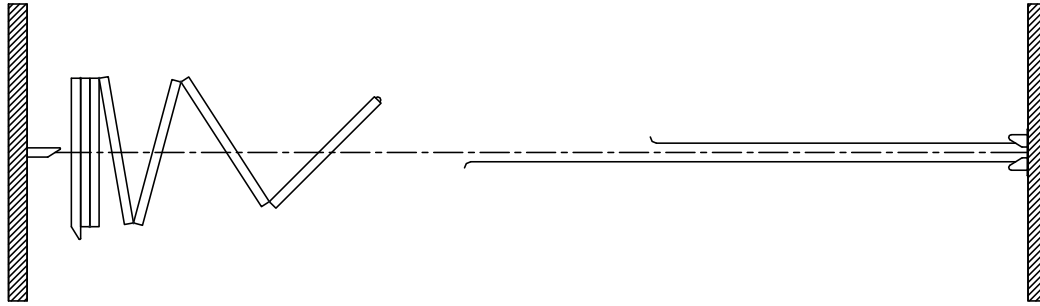
Models	
FA	Fixed top 1" (25mm) and automatic bottom 2" (50mm) floor clearance
FV	Fixed top 1" (25mm) and bottom adjustable 3" (76mm) floor clearance



MODERCO

Excel 700 Series

Technical Data Sheet Excel 733-EG



Features & Options

Standard Features

- Electrically-operated continuously-hinged movable partition.
- Driven with Ø8 mm [5/16"] steel cable.
- STC 43 or 49.
- 76 mm [3"] nominal thickness. 1230 mm [48 1/2"] maximum width.
- 18 ga. welded steel frame.
- Roll-formed steel faces welded to panel frame.
- Panel core made up of one 25 mm [1"] semi-rigid insulation board between two 25 mm [1"] honeycomb boards.
- Trimless vertical edges.
- Vinyl tongue and groove vertical sound seals between panels.
- Final closure at wall jamb.
- Continuous-contact multi-finger fixed vinyl top seals.
- Continuous-contact multi-finger adjustable vinyl bottom seals.
- Steel butt hinges.

- S5X10 steel track.
- Odd-numbered panels supported by one 4-wheeled carrier with steel tires over sealed steel ball bearing wheels.
- Vinyl wallcovering.
- Maximum height: 9220 mm [30'-3"].
- UL/ULC listed drive unit with NEMA-1 motor enclosure and controls and control enclosure conform to ANSI/NEMA ICS1, ICS 2 and ICS 6..
- 1.5 hp / 208 V / 3 ph / 60 Hz
- Travel controlled by limit switches.
- Operation by two simultaneously-activated key switches located on each side of the partition.
- Emergency release allows manual operation during power outage.

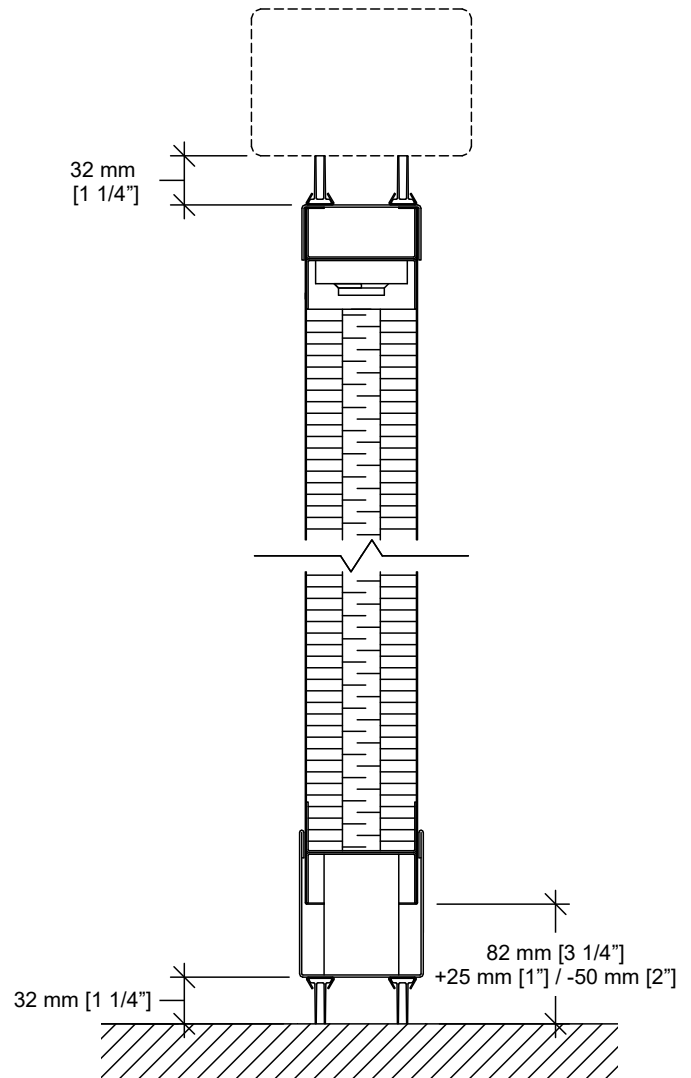
Optional Features and Accessories

- Final closure at pocket door.
- Powder-coated frame and/or track.
- Vertically-ribbed carpet wallcovering.
- Owner-supplied wallcovering (approval required).

Optional Features and Accessories (cont'd)

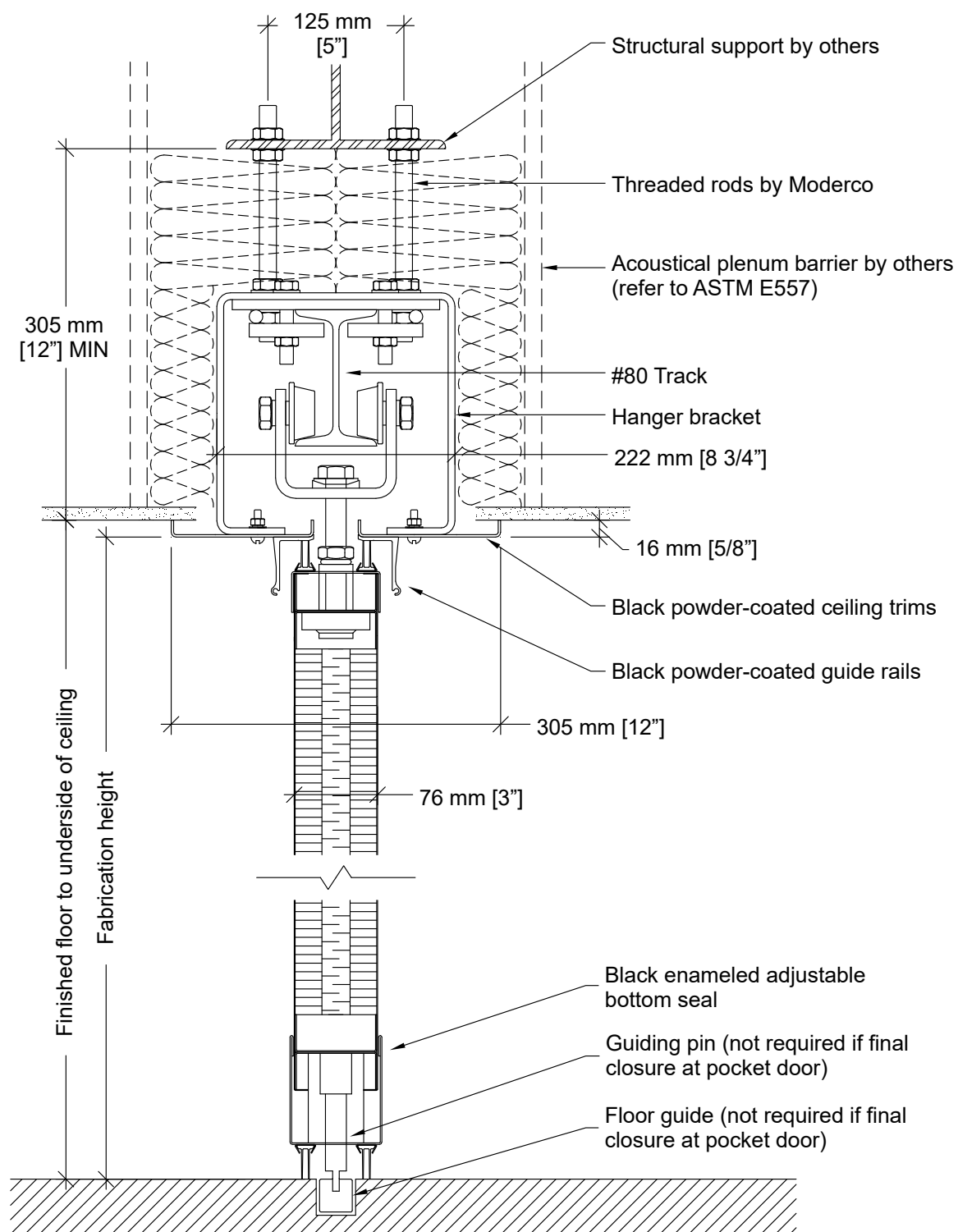
- ADA-compliant pass door with flush pulls and a ball latch.
 - Door options:
 - concealed automatic closer
 - window frame
 - door viewer
 - self-luminous "Running Man" exit sign with green faceplate (standard outside USA, optional in USA) *
 - photoluminescent "EXIT" sign with red faceplate (standard in USA, optional elsewhere) *
 - photoluminescent "EXIT" sign with green faceplate (optional) *
 - self-luminous "EXIT" sign with red faceplate (optional) *
 - self-luminous "EXIT" sign with green faceplate (optional) *
 - deadbolt lock *
- * An exit sign and a deadbolt lock will not be installed together on the same door.*
- Surface-mounted white marker boards.
 - 3-section pocket door fitted with limit switches to prevent operation of the partition until the pocket door is fully opened.
 - Drive unit voltage:
 - 1 ph – 120 V / 240 V (up to 25 panels)
 - 3 ph – 230 V / 460 V / 575 V
 - Safety devices:
 - Infra-red photo-electric sensors prevent/stop operation if one of the beams is interrupted
 - Safety mats in stack area prevent/stop operation if a mass is detected
 - Safety lead edge stops operation if it meets an obstacle
 - Operation by one key switch and one push button switch.

Horizontal Seals

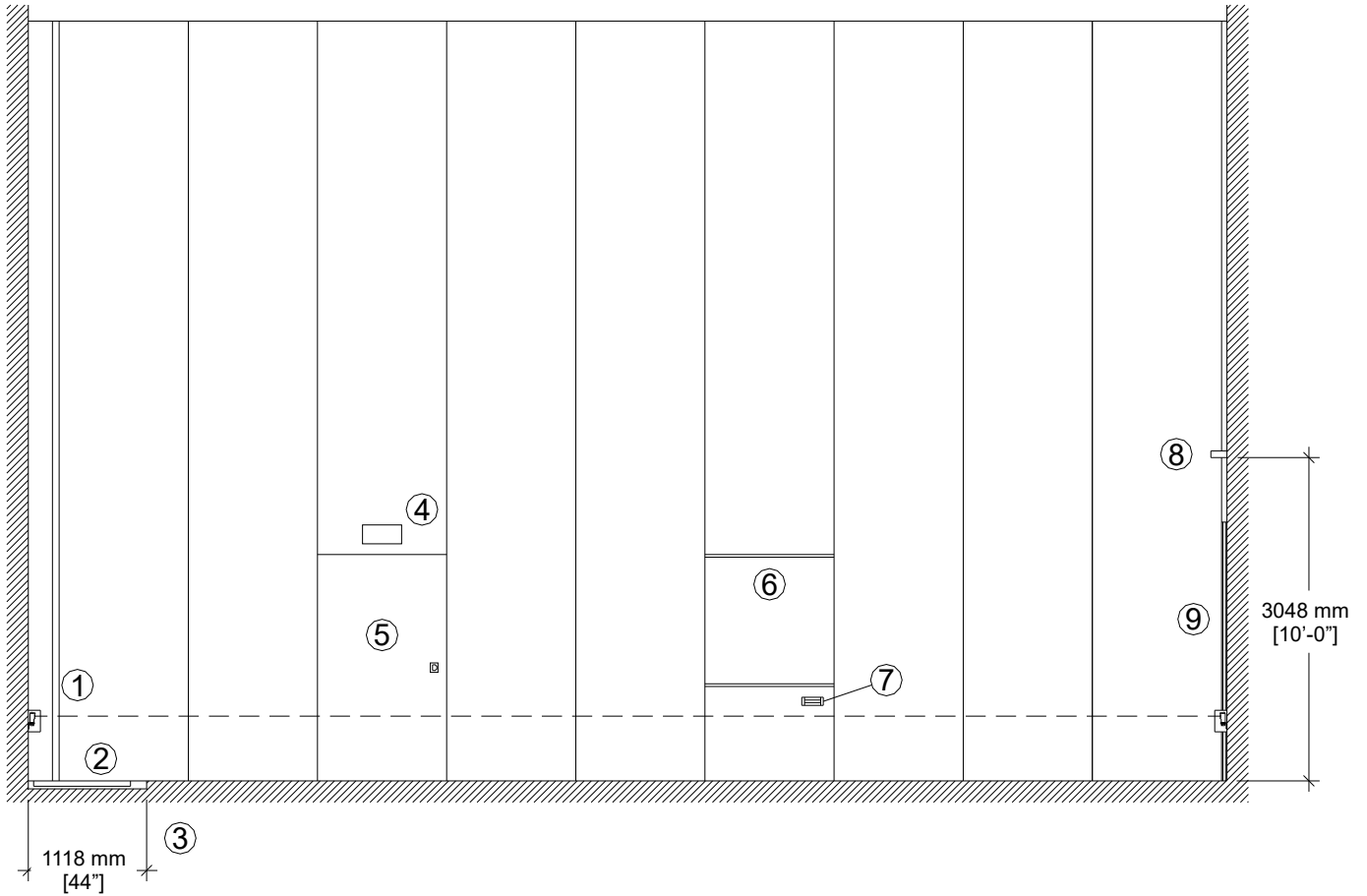


Floor clearance : 32 mm [1 1/4"]
 Operating tolerances :
 +25 mm / -50 mm [+1" / -2"]

Vertical Section

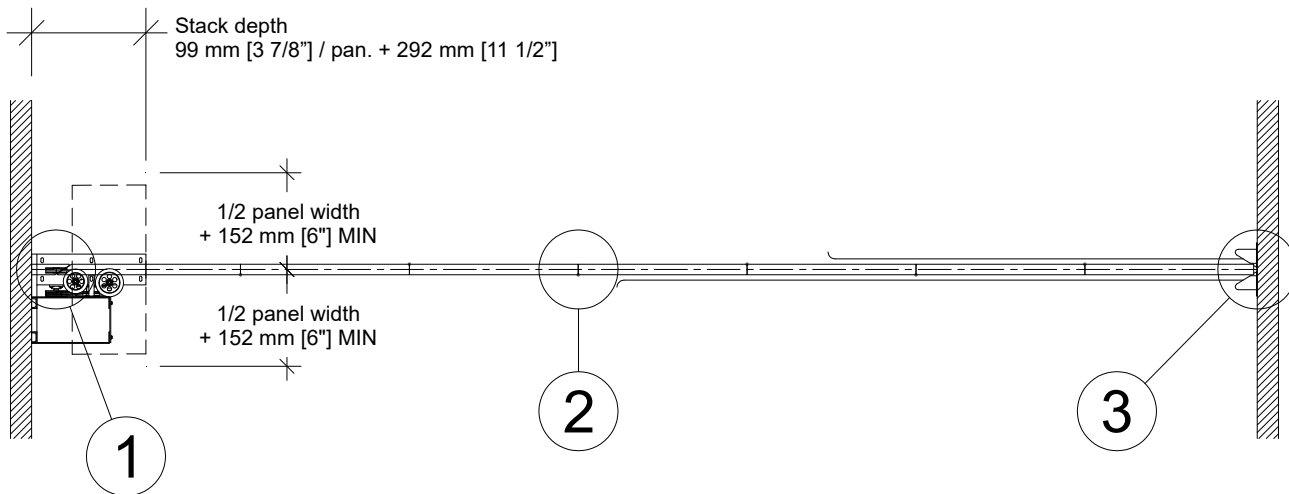


Elevation

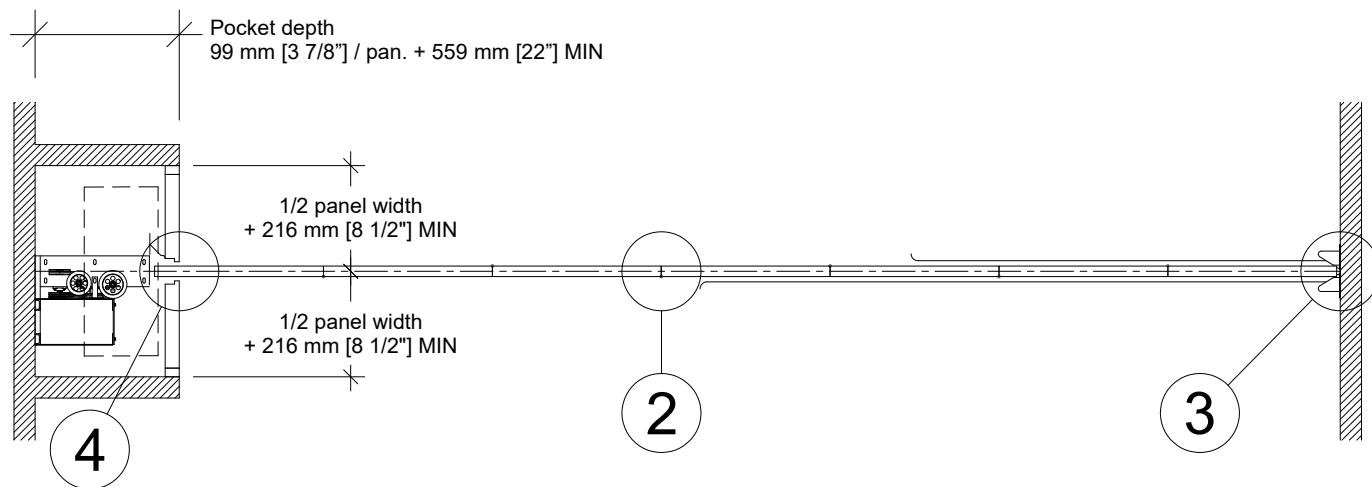


- | | |
|---|---------------------|
| 1- Infra-red photo-electric sensors | 6- Marker board |
| 2- Safety mats | 7- Eraser box |
| 3- Floor guide (not required if final closure at pocket door) | 8- Lead-in bracket |
| 4- Exit sign | 9- Safety lead edge |
| 5- Passdoor | |

Plan Views

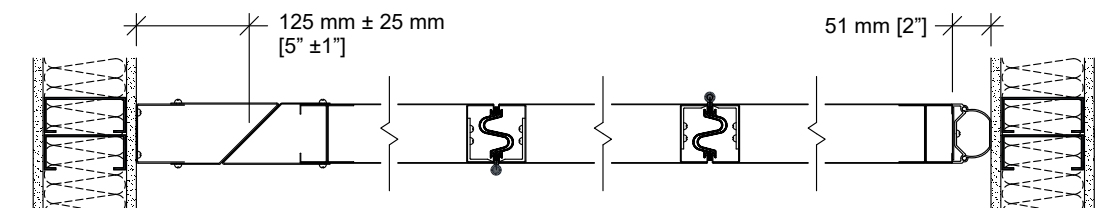


Final closure at wall jamb



Final closure at optional pocket door

Horizontal Sections



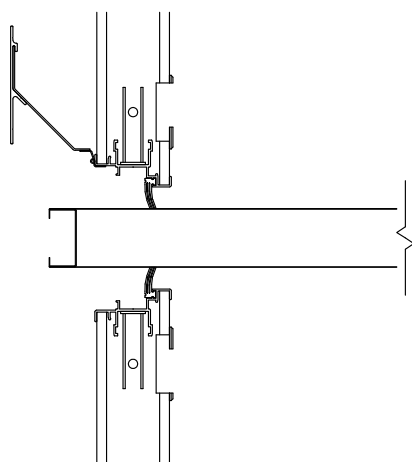
Solid blocking
by others

Solid blocking
by others

1 Wall jamb

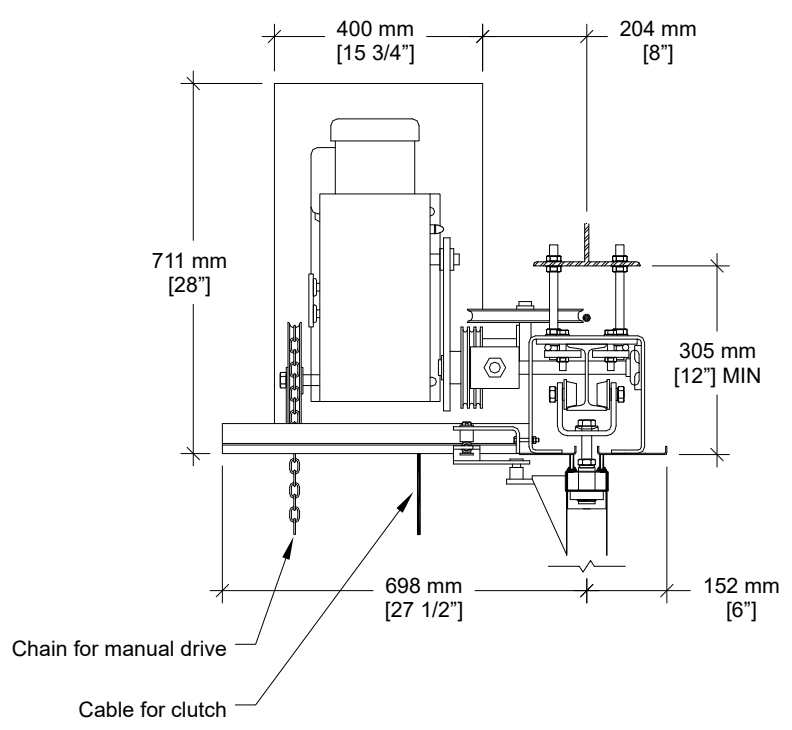
2 Panel joint

3 Bulb seal

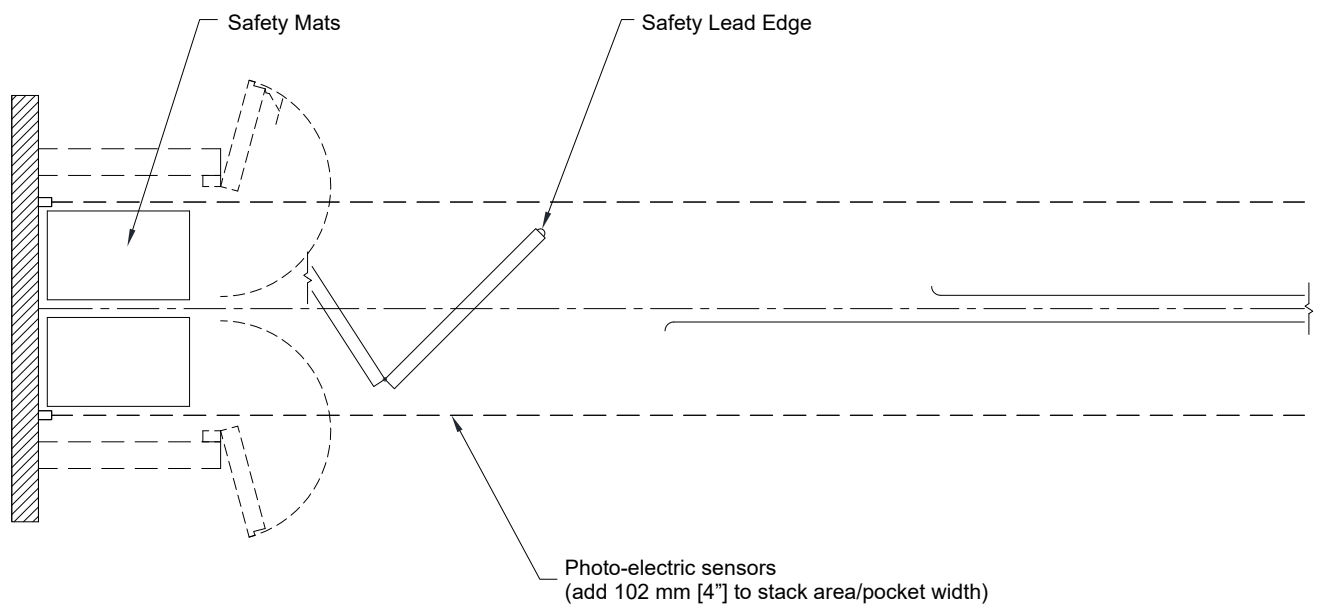


4 Pocket door
(optional)

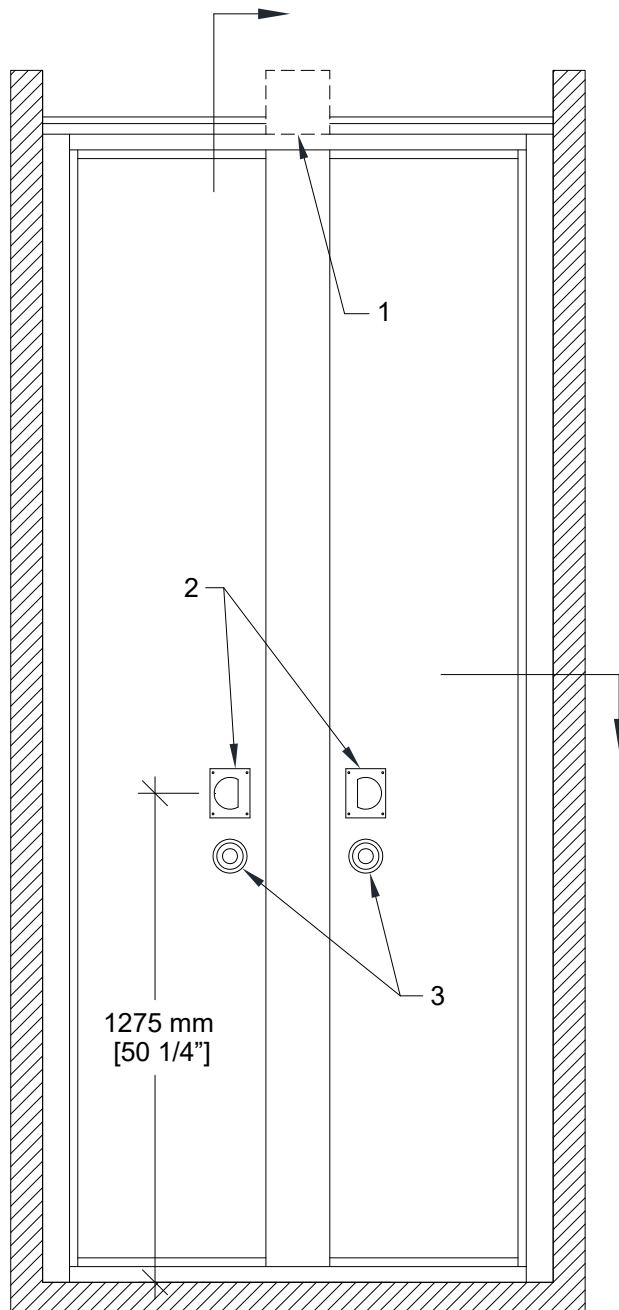
Drive Unit



Optional Safety Devices



Pocket Door



General

- 2 independent sections and 1 center flap
- Same surface finish as movable partition / optional custom finish / unfinished
- Clear anodized frame / optional custom finish
- Top and bottom sliding bolts
- Optional lock for top and bottom sliding bolts
- Low profile hinges

PN-73G Non-acoustical Pocket Door

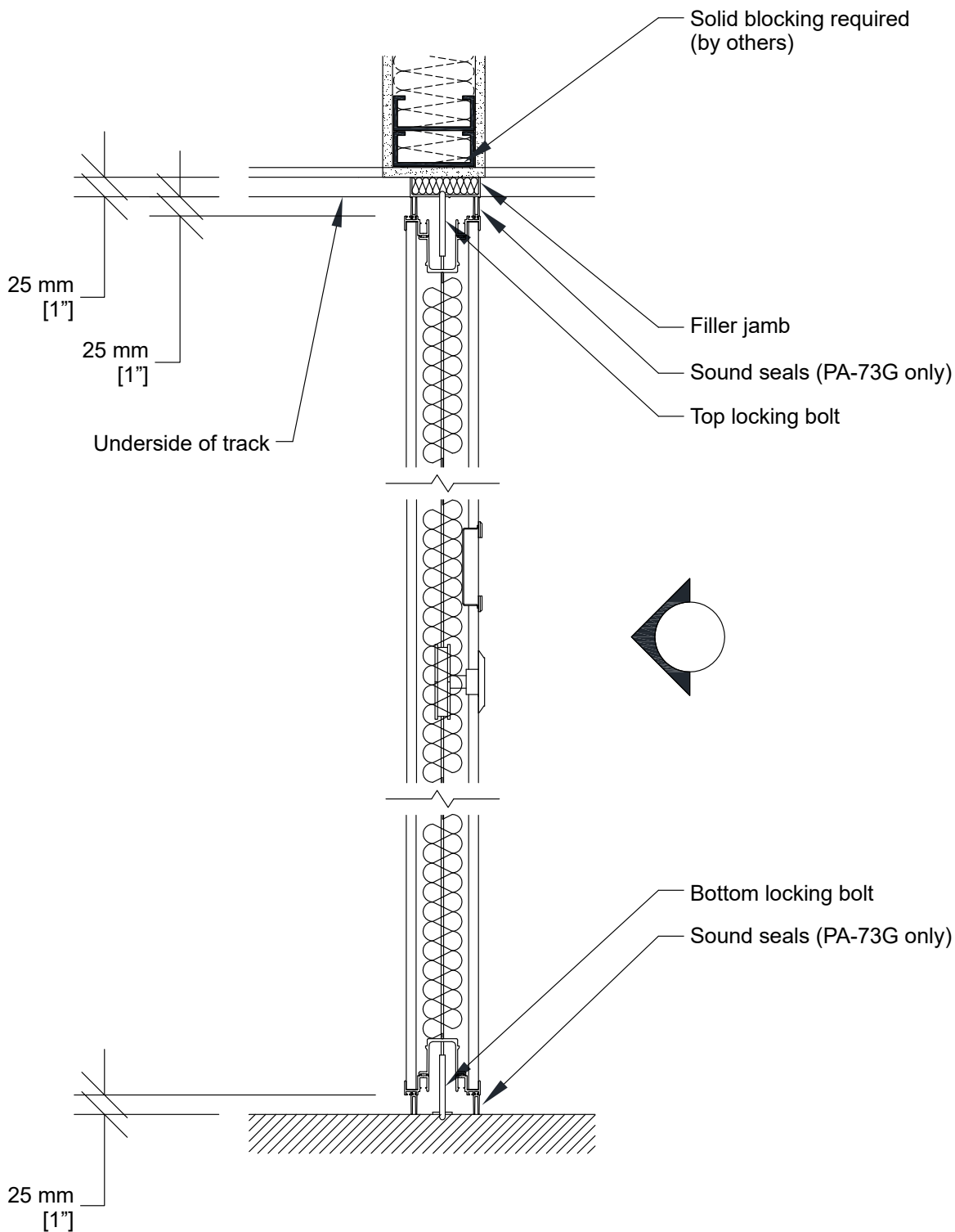
- Optional for wall-to-wall layout

PA-73G Acoustical Pocket Door

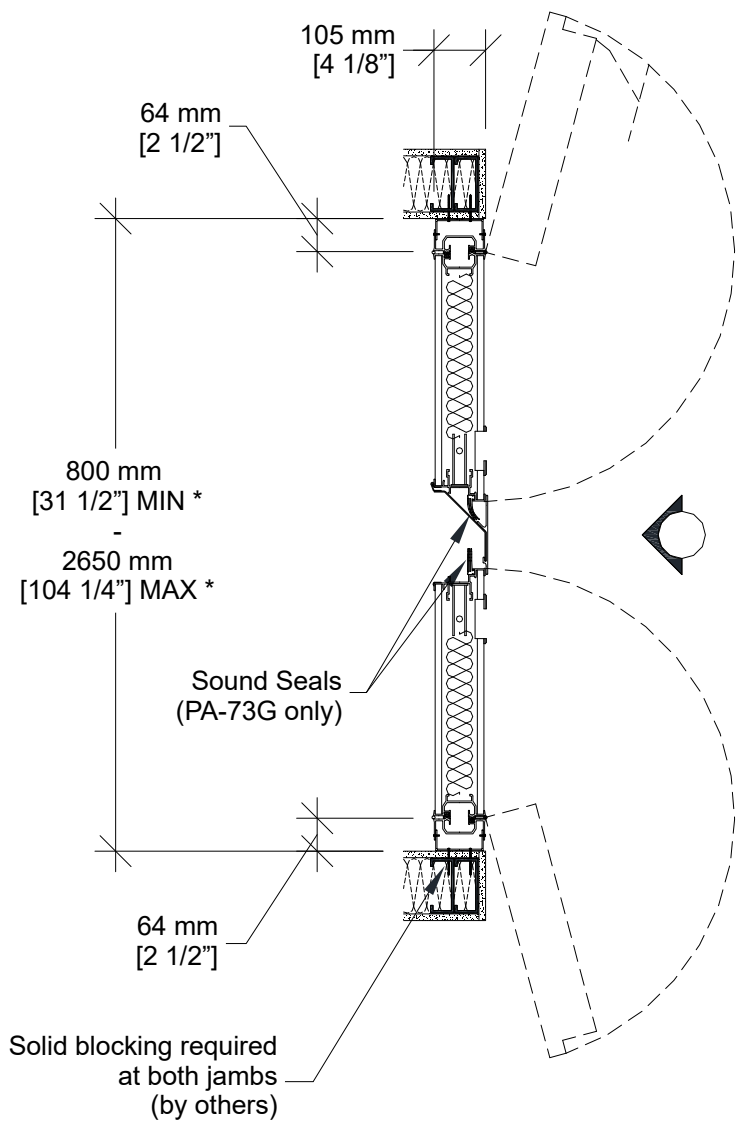
- Fixed top and bottom sweeps
- Required for wall-to-pocket layout

- 1- Track
- 2- Flush pulls
- 3- Locking bolt activators

Vertical Section



Horizontal Section



* Min/Max dimensions are fabrication limits and do not account for job-specific conditions.

Please consult shop drawings or local Moderco distributor prior to sizing pockets.