

Year 11 Parent Information Evening

Tuesday 16th September 2025

Welcome



Graeme Martin – Deputy Headteacher (Year 11)

Catherine Fell – Pastoral Lead (Year 11)

The aim of the evening is for Parents of Year 11 Students to leave with:

- Information regarding key dates and events
- An understanding of what, alongside the curriculum, the school is providing support students with preparation Year 11
- An understanding of what student independent learning will look like as they prepare for upcoming PPEs and beyond



Key Dates for the Year:



- Exam Season 2026 - May*
- PPE 1 – 3rd to the 14th of November
- PPE2 – 9th to 27th of February (Half-Term in between)
- Reports – 15th October (Progress reports), 10th December (full reports including PPE grades), 18th March (Progress reports)
- Parent evenings: Thursday 23th October, Thursday 19th March (Intervention Evening)

Key web address: <https://www.southamcollege.com/> (Scroll down to Year 11 blog)



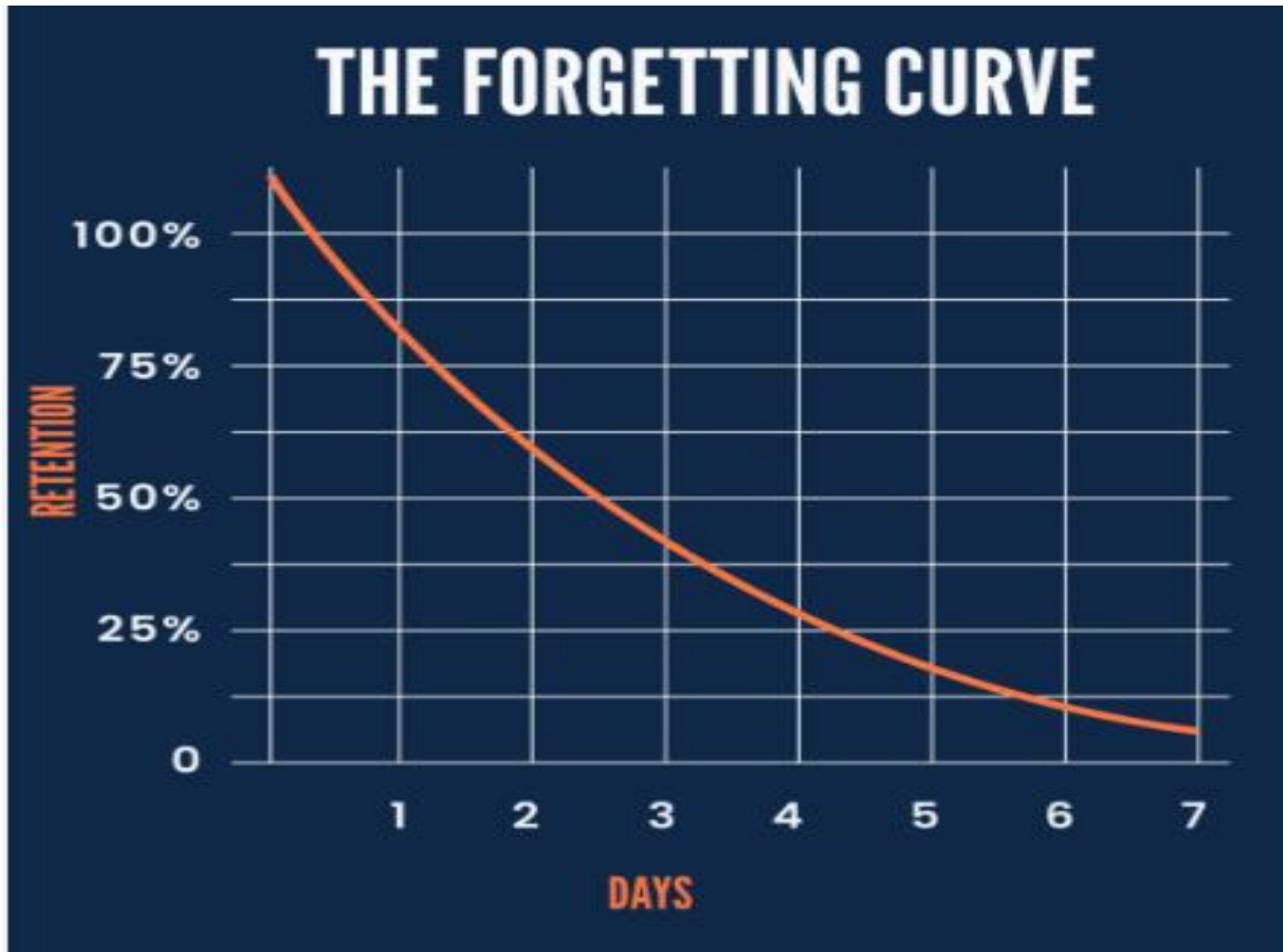
Perspective...

- “Don’t make the year a mountain to climb”
- This year is undeniably important, but in the end the exam will be a success due culmination of hard work
- “Exams are not something which you will be either lucky or unlucky at”
- **Time**, not ability, is our biggest challenge this year.



Learning, Teaching & Revision in Year 11

Why is learning hard?



What do we do in lessons?

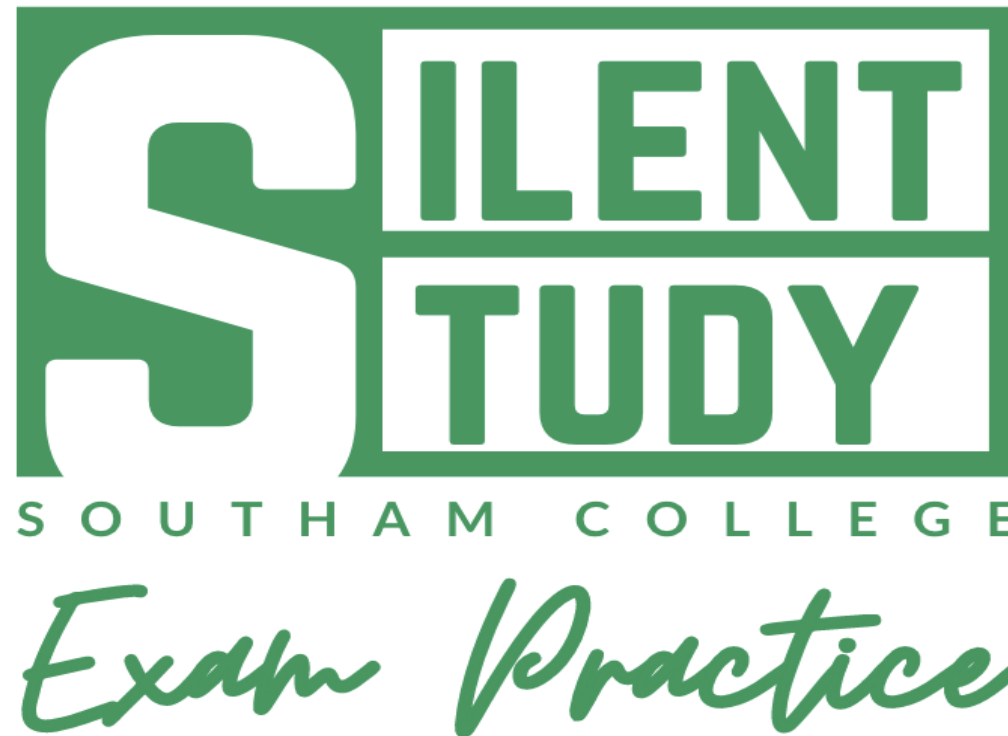
“Retrieval” quizzes at the start of every lesson to help students remember and retain information in their long-term memory.

Revise in 5 5 4 3 2 1

What do we do in lessons?



Regular opportunities to practice exam questions under exam conditions in the classroom.



What do we do in lessons?

Feedback in exam questions at regular intervals. The feedback is designed to move students up a grade. Students should respond to the feedback to show they have understood and can make progress.



Home Learning: What you can expect from us.



Home learning will be:

- In-line with curriculum learning
- Focused on the application of work using past exam papers
- Provide revision tasks specific to upcoming assessments (and in time PPEs and real examination)

Macbeth revision ^
Issued: 4/9/2024 | Due: 10/9/2024

Hello year 11

Watch this video: <https://www.youtube.com/watch?v=-rARfRi2c-k>
Then complete the 6 questions on the extract from Act 1 Scene 2 of Macbeth

A hard copy will be given out to you in class today - please message me with any questions.

Miss Lynch

A1,S2 - Page 1.docx

Edexcel GCSE Maths Exam Structure

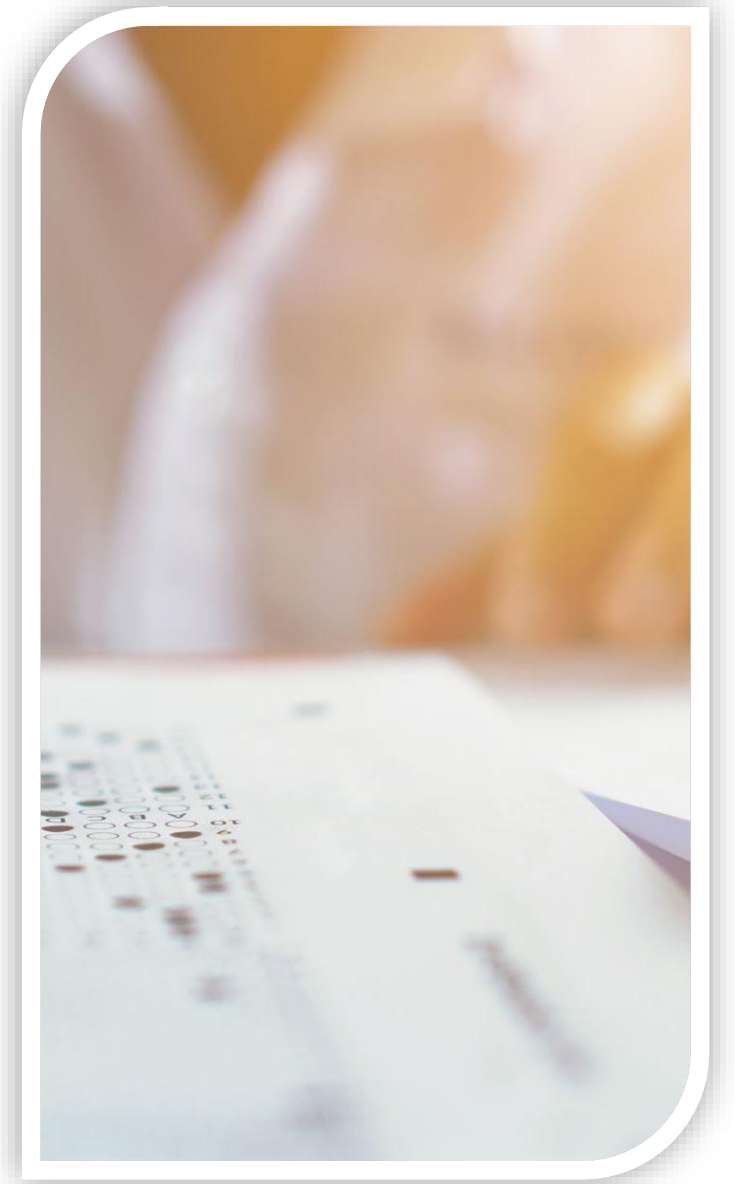
- There are three exam papers all with equal weighting
- Higher – Grade 4-9
- Foundation – up to Grade 5
- Each paper is 90 minutes long and 80 marks
- Paper 1 is always non-calculator
- Papers 2 and 3 are always calculator
- Average Pass – Grade 4, High Pass – Grade 5
- Fluency, Reasoning and Problem Solving

Summer 2026 Maths GCSE Dates

Paper 1 (Non-Calculator) is on Thursday 14 May 2026

Paper 2 (Calculator) is scheduled for Wednesday 3 June 2026

Paper 3 (Calculator) will be on Wednesday 10 June 2026



In-Class Practice and Assessments

Ri5 and Silent Study

Every lesson will include exam-based Revise in %'s and a period of silent study.

Timed Practice Exams

Students participate in timed assessments mirroring real GCSE exams to build exam technique and stamina.

Personalized Feedback

Feedback from assessments helps set personal targets to guide effective revision and improvement.

Progress Monitoring

Teachers use assessment results to monitor progress and adjust instructions for individual needs. This include personalised schemes for classes depending on their specific needs



Effective Maths Revision Techniques

Regular Problem Solving

Consistent practice through problem-solving builds fluency and reinforces understanding of mathematical concepts.

Exam-Style Practice

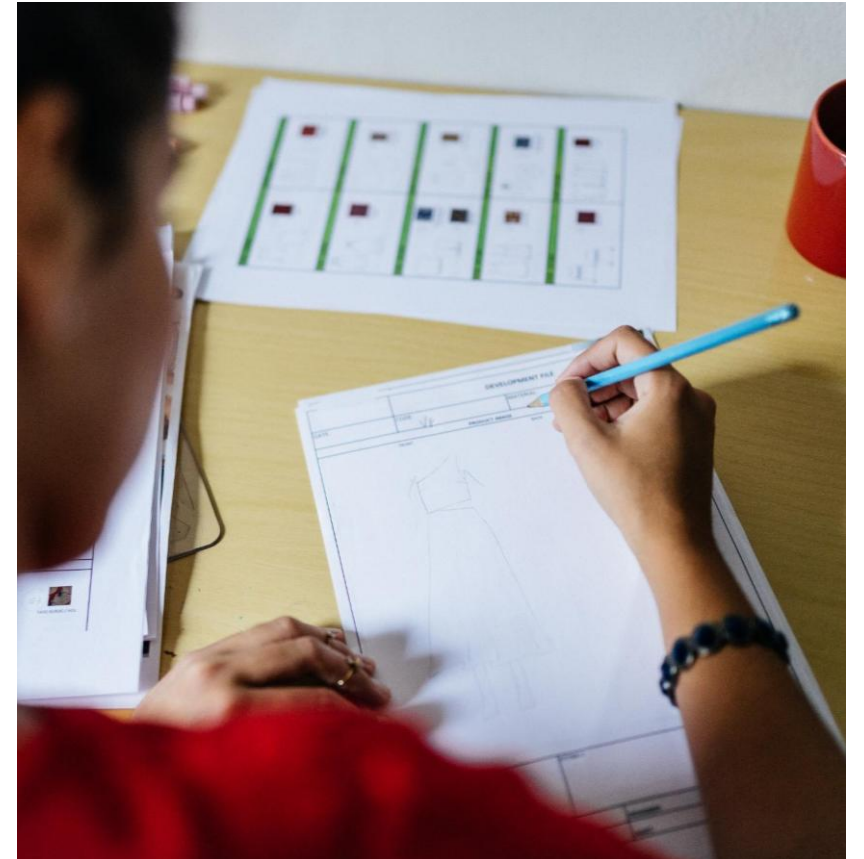
Using exam-style questions familiarizes students with test formats and expectations to improve exam readiness.

Revision Cards and Guides

Revision cards assist quick recall of formulas while structured guides provide thorough syllabus coverage.

Goal Setting and Support

Setting revision goals and tracking progress motivates students; parental support enhances study environment.



Top Revision Websites

Maths Genie Platform

Maths Genie offers video tutorials, exam questions, and solutions for both Foundation and Higher tiers of Edexcel GCSE Maths.

Corbett Maths Resources

Corbett Maths provides concise videos and printable worksheets for targeted practice and reinforcement.

On Maths

An online platform with past papers which mark work online and can give a grade.

BBC Bitesize Features

BBC Bitesize offers topic summaries and interactive quizzes for quick review and self-assessment.



Homework Expectations and Sparx Maths

Homework Purpose and Duration

Homework reinforces learning and exam preparation with about one hour assigned weekly based on student ability.

Sparx Maths Platform

Sparx Maths offers adaptive, personalized tasks aligned with the school syllabus using spaced repetition and interleaving.

Parental Support Importance

Parents are encouraged to monitor homework, provide a quiet space, and necessary equipment for effective study.

Half Papers and Exam questions

Students are given weekly 'half papers' for exam practice which also includes a walkthrough guide on TikTok and worked solutions



Treating PPE1 as the Real Exam

Importance of PPE1

PPE1 is a crucial benchmark for Year 11 students in their GCSE Maths journey.

Real Exam Preparation

Treating PPE1 as the real exam builds experience in exam conditions and time management.

Early Performance Insight

PPE1 results help identify strengths and weaknesses for targeted support early in the year.

Building Confidence and Morale

Good PPE1 results boost student confidence and guide revision strategies effectively.



Revision Lists and QLA Feedback

Tailored Revision Lists

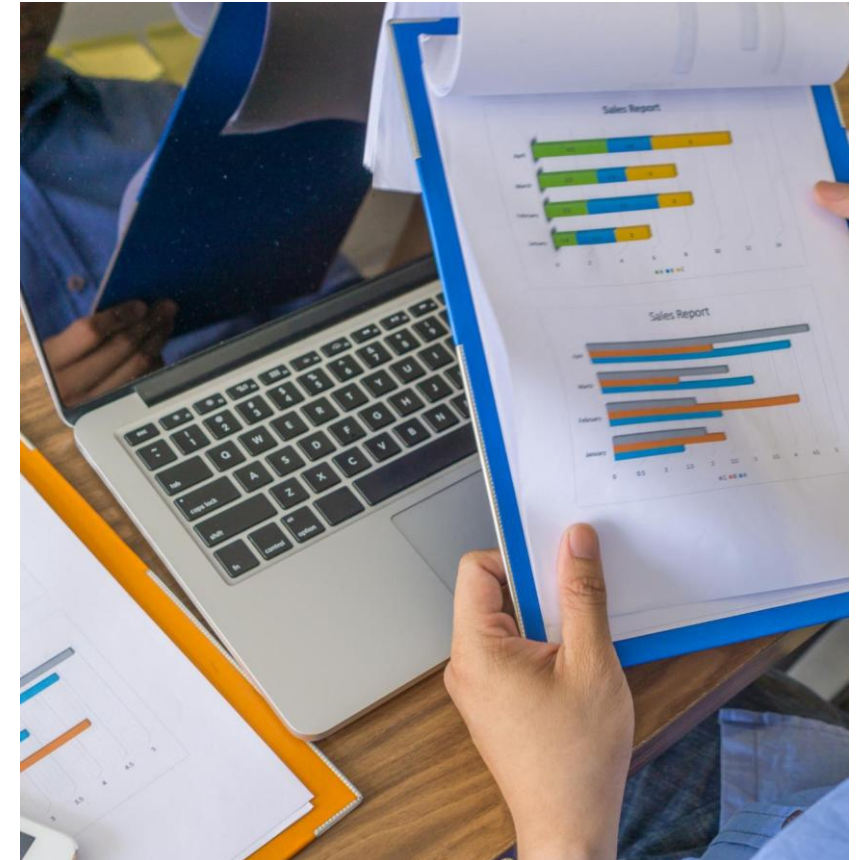
Students receive focused revision lists aligned with exam topics to enhance targeted preparation.

Question Level Analysis (QLA)

QLA provides detailed feedback highlighting individual strengths and weaknesses by topic.

Focused Study and Feedback

Personalized feedback guides students' focused revision and aids teachers' targeted support planning.





GCSE English: Key Information

- **English Language and English Literature are two separate, equally important GCSE qualifications**
 - **English Language assesses reading and writing skills through unseen material**
 - **English Literature assesses reading skills through pre-read texts and some unseen material**
 - **Both qualifications are 100% exam, but there is a spoken language element to the English Language GCSE (this is separately marked to the numerical grade)**
 - **Both qualifications have 2 exams – so there are 4 exams in total that students will sit in the summer 2026 series**
 - **There are no tiers of entry: all students sit the same exam!**
-

GCSE English Language

- **Paper 1: Explorations in Creative Reading and Writing (40 marks – 16 are for SPAG)**
- **Section B: Writing (50% of the marks for the paper)**
- **A choice of questions – either descriptive or narrative**
- **E.g. A piece of writing inspired by an image such as this:**



GCSE English Language

- **Paper 2: Writers' Viewpoints and Perspectives (40 marks – 16 are for SPAG)**
- **Section B: Writing (50% of the marks for the paper)**
- **1 question – writing to argue and persuade**
- **The question will be based on the reading material**
- **Students will be given a statement to argue for or against**

0 5

'Snow seems like it is picturesque, exciting and fun but in reality it causes accidents, inconvenience and economic disruption.'

Write an article for a broadsheet newspaper in which you explain your point of view on this issue.

(24 marks for content and organisation
16 marks for technical accuracy)
[40 marks]



GCSE English Literature

- **Paper 1: Shakespeare & the 19th Century Novel (1 hour 45 minutes)
40% of GCSE**
 - **Section A: Macbeth Question**
 - **Extract to whole (30 + 4 marks) up to 4 of these marks are for SPaG**
 - **Section B: A Christmas Carol**
 - **Extract to whole (30 marks)**
-



GCSE English Literature

- **Paper 2: Modern Text & Poetry (2 hours 15 minutes) 60% of GCSE**
 - **Section A: An Inspector Calls (30 + 4 marks) up to 4 of these marks are for SPaG**
 - **Choice of 2 questions, no extract – all quotes need to be from memory!**
 - **Section B: World & Lives Poetry (30 marks)**
 - **1 named poem (printed) & students have to compare to one other from the cluster they have studied (choice of 14 poems and this has to be from memory)**
 - **Section C: Unseen Poetry (32 marks)**
 - **Part 1: Analysing 1 unseen poem (24 marks)**
 - **Part 2: Comparing 2 unseen poems (8 marks)**
-



Research Survey Findings...

Pupils who regularly achieve their target grade or higher owe their success to:

- **Being helped/monitored at home with their home-learning**
 - **Handing their home-learning in on time**
 - **Reading at home/outside of school**
 - **Not having games consoles or televisions/laptop computers in their bedrooms or reducing the time spent on these devices**
 - **Feeling confident with their written accuracy**
 - **Having wide range of vocabulary**
 - **Receiving individual attention to support with their learning**
-



How can you help?

- **Encourage wider reading of 20th and 21st Century novels**
- **Support your son/daughter to include English revision in their revision timetable – purchase a revision guide for them**
- **Ensure that your son/daughter is completing their home-learning on time**
- **Provide opportunities for reading of the news online and in print**
- **Encourage them to attend revision sessions (advertised on our social media)**
- **Watch plot summaries on YouTube of their set texts (like Macbeth) so you can offer support or have a discussion about key themes in the text**
- **Practise reading texts from the past together e.g. Letters or diaries by famous writers such as Charles Dickens, Florence Nightingale, Charles Darwin**
- **Practise spellings and punctuation by reading their work with them and testing them on spellings and homophones**
- **Log in to Class Charts and support students with completing home-learning**

CC135071



	<u>Paper 1</u>							
	<u>Biology</u>		<u>Chemistry</u>		<u>Physics</u>		<u>Biology</u>	
	Grade	Marks	Grade	Marks	Grade	Marks	Grade	Marks
Sample								
2018								
2019								
2020								
2021								
2022								
2023								
Average	#DIV/0!	#DIV/0!	#DIV/0!	#DIV/0!	#DIV/0!	#DIV/0!	#DIV/0!	#DIV/0!
Best	#DIV/0!	#DIV/0!	#DIV/0!	#DIV/0!	#DIV/0!	#DIV/0!	#DIV/0!	#DIV/0!
Exam date	10-May		17-May		22-May		07-Jun	

My Hypothesis:

‘Whole past papers are the best way to get ready for GCSE exams in the Sciences’.

Please write clearly in block capitals.

Centre
number

--	--	--	--	--	--

Candidate
number

--	--	--	--

Surname

Forename(s)

Candidate
signature

GCSE BIOLOGY

H

Higher Tier Paper 1H

 Tuesday 16 May 2023 Morning Time allowed: 1 hour 45 minutes
Materials

For this paper you must have:

- a ruler
- a scientific calculator.

Instructions

- Use black ink or black ball-point pen.
- Pencil should only be used for drawing.
- Fill in the boxes at the top of this page.
- Answer **all** questions in the spaces provided.
- If you need extra space for your answer(s), use the lined pages at the end of this book. Write the question number against your answer(s).
- Do all rough work in this book. Cross through any work you do not want to be marked.
- In all calculations, show clearly how you work out your answer.

Information

- The maximum mark for this paper is 100.
- The marks for questions are shown in brackets.
- You are expected to use a calculator where appropriate.
- You are reminded of the need for good English and clear presentation in your answers.

For Examiner's Use	
Question	Mark
1	
2	
3	
4	
5	
6	
TOTAL	

PRRA

Did PRA work?

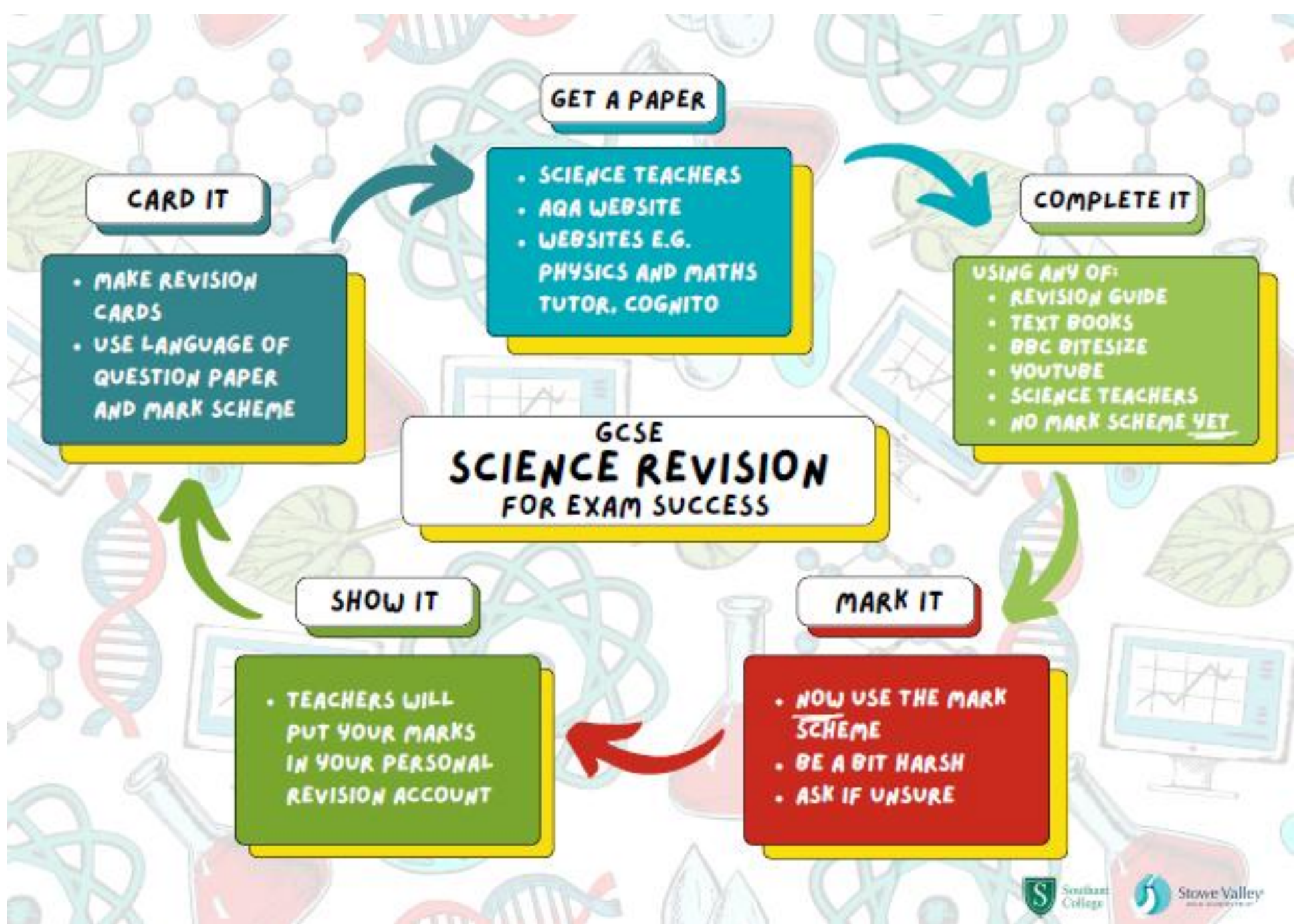
2024: 11 grade 9s in the Sciences.

2025: 37 grade 9s in the Sciences.

Other students across the grade range used it to succeed.

So, what exactly
is PRA?

I shall explain.



GET A PAPER

- SCIENCE TEACHERS
- AGA WEBSITE
- WEBSITES E.G. PHYSICS AND MATHS TUTOR, COGNITO

CARD IT

- MAKE REVISION CARDS
- USE LANGUAGE OF QUESTION PAPER AND MARK SCHEME

COMPLETE IT

- USING ANY OF:
- REVISION GUIDE
 - TEXT BOOKS
 - BBC BITESIZE
 - YOUTUBE
 - SCIENCE TEACHERS
 - NO MARK SCHEME YET

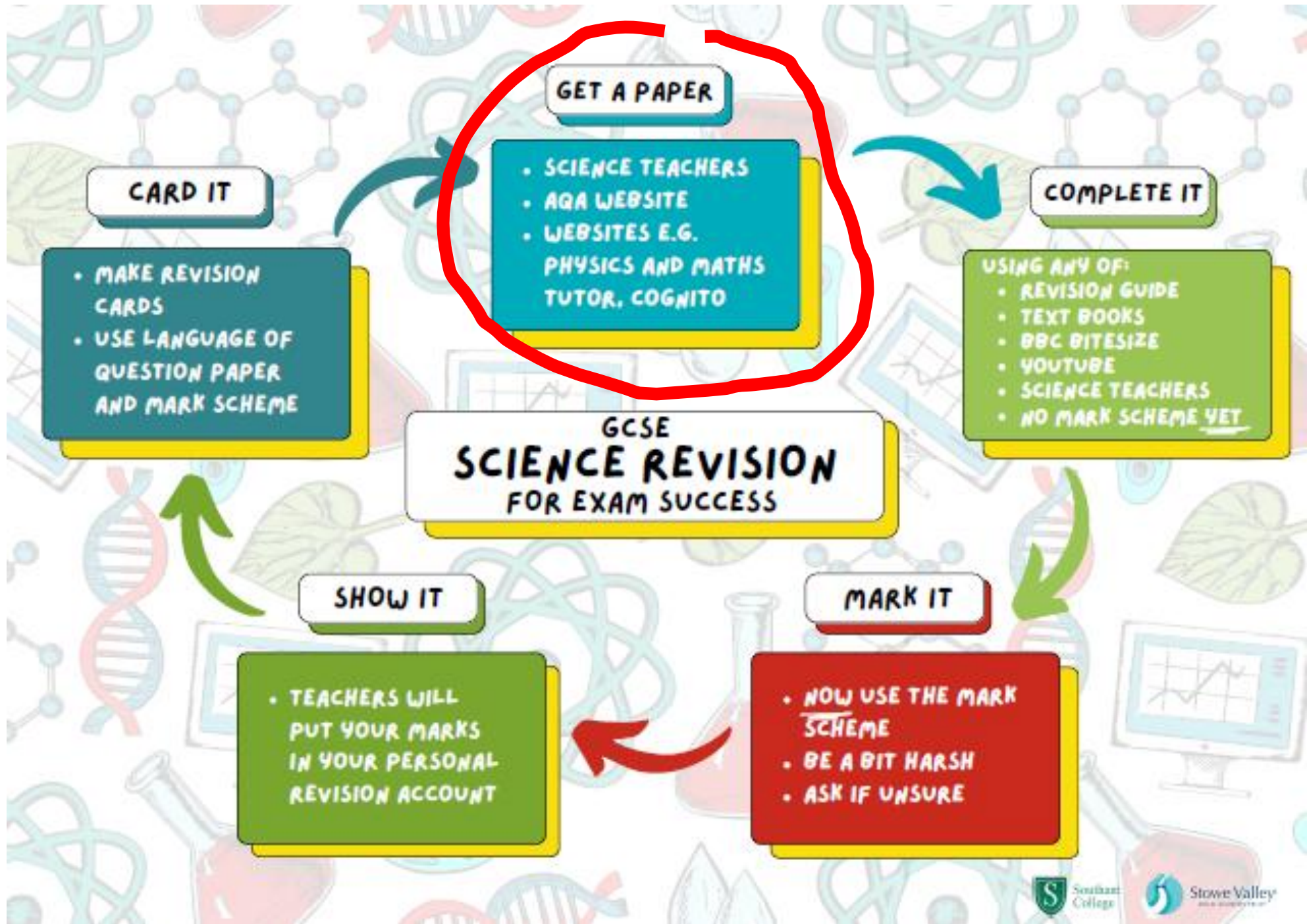
GCSE SCIENCE REVISION FOR EXAM SUCCESS

MARK IT

- NOW USE THE MARK SCHEME
- BE A BIT HARSH
- ASK IF UNSURE

SHOW IT

- TEACHERS WILL PUT YOUR MARKS IN YOUR PERSONAL REVISION ACCOUNT



GET A PAPER

- SCIENCE TEACHERS
- AGA WEBSITE
- WEBSITES E.G. PHYSICS AND MATHS TUTOR, COGNITO

CARD IT

- MAKE REVISION CARDS
- USE LANGUAGE OF QUESTION PAPER AND MARK SCHEME

COMPLETE IT

- USING ANY OF:
- REVISION GUIDE
 - TEXT BOOKS
 - BBC BITESIZE
 - YOUTUBE
 - SCIENCE TEACHERS
 - NO MARK SCHEME YET

GCSE SCIENCE REVISION FOR EXAM SUCCESS

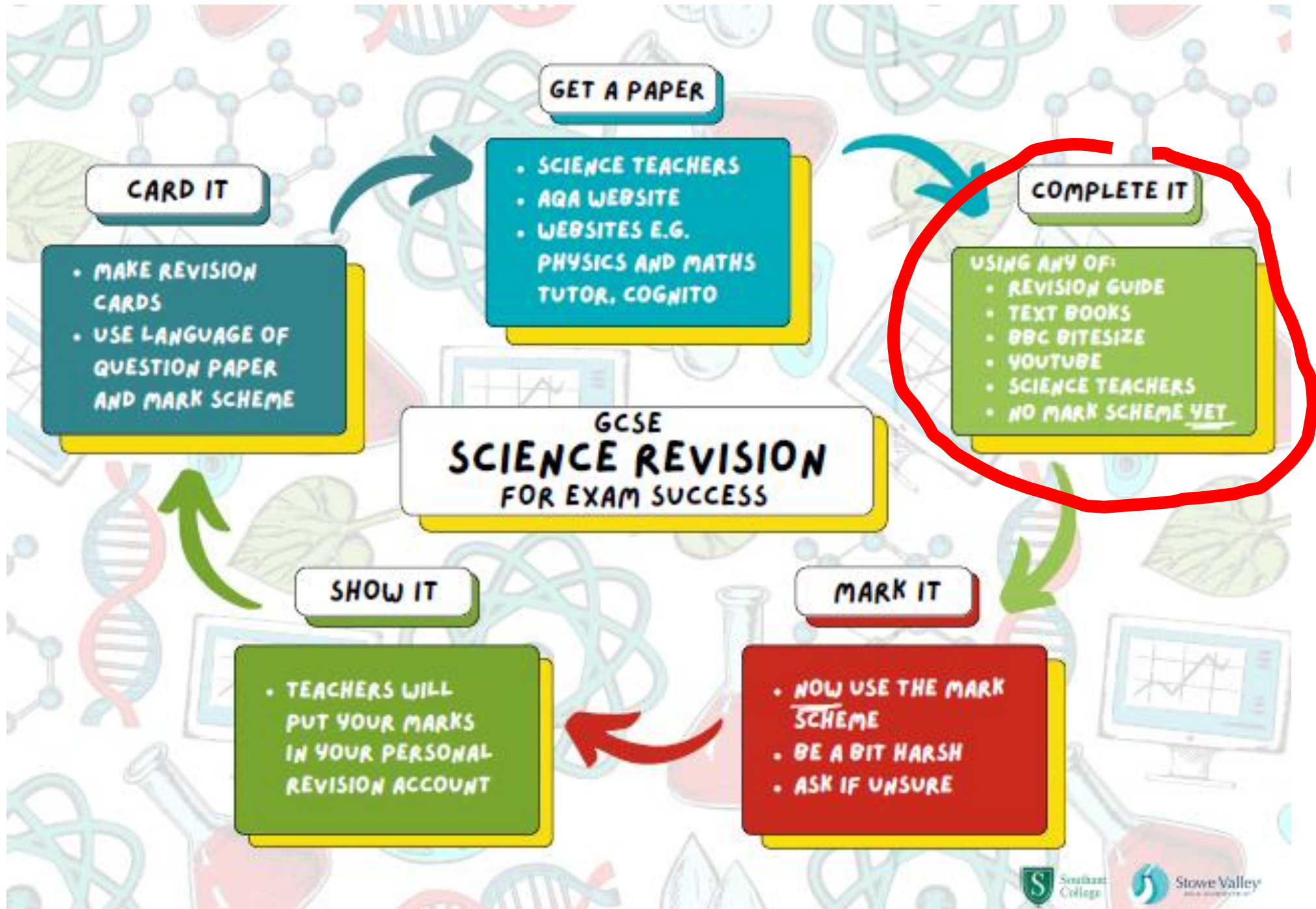
MARK IT

- NOW USE THE MARK SCHEME
- BE A BIT HARSH
- ASK IF UNSURE

SHOW IT

- TEACHERS WILL PUT YOUR MARKS IN YOUR PERSONAL REVISION ACCOUNT

We will give
you a paper
every fortnight.



GET A PAPER

- SCIENCE TEACHERS
- AGA WEBSITE
- WEBSITES E.G. PHYSICS AND MATHS TUTOR, COGNITO

CARD IT

- MAKE REVISION CARDS
- USE LANGUAGE OF QUESTION PAPER AND MARK SCHEME

COMPLETE IT

- USING ANY OF:
- REVISION GUIDE
- TEXT BOOKS
- BBC BITESIZE
- YOUTUBE
- SCIENCE TEACHERS
- NO MARK SCHEME YET

GCSE SCIENCE REVISION FOR EXAM SUCCESS

MARK IT

- NOW USE THE MARK SCHEME
- BE A BIT HARSH
- ASK IF UNSURE

SHOW IT

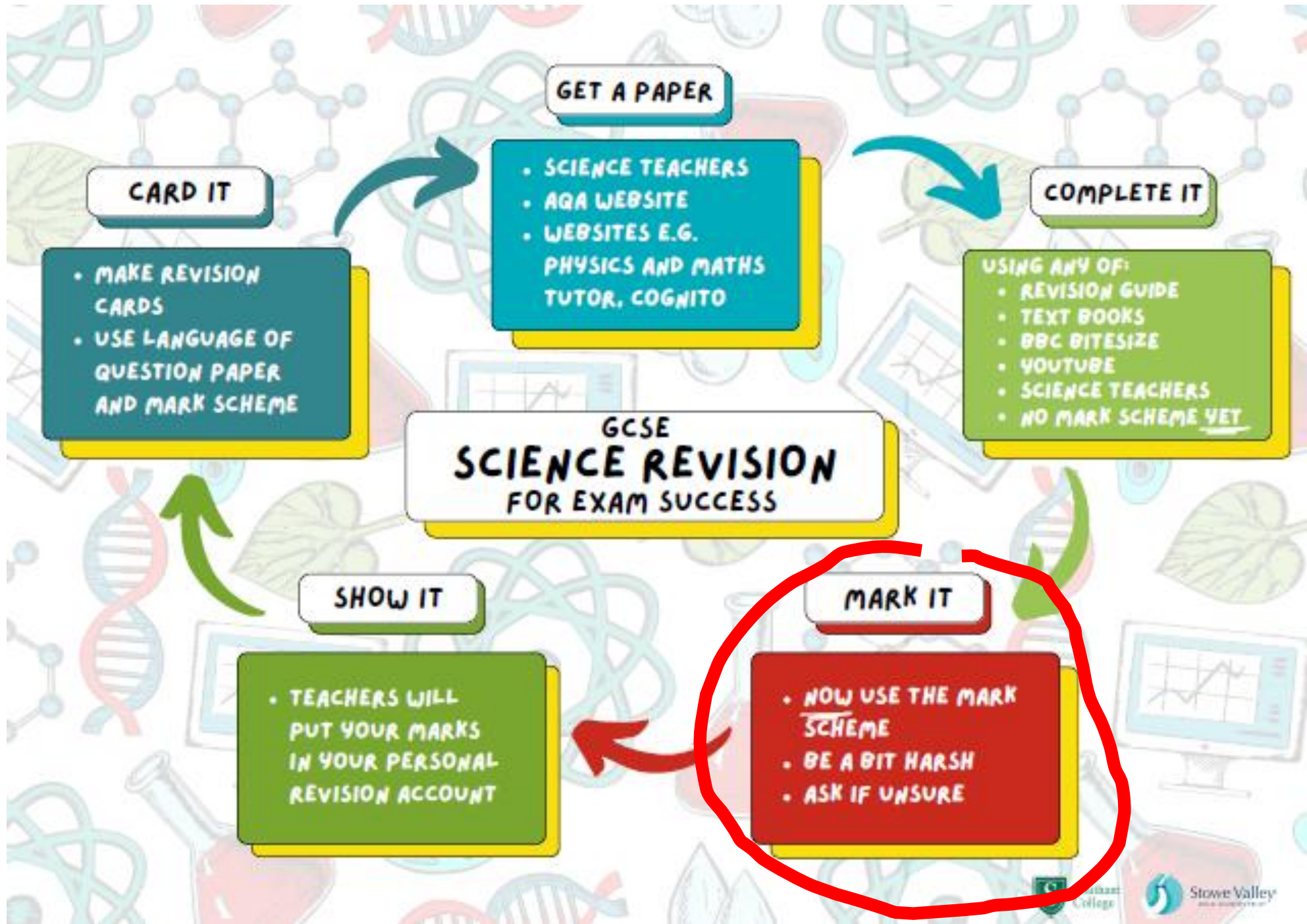
- TEACHERS WILL PUT YOUR MARKS IN YOUR PERSONAL REVISION ACCOUNT

Take your time, use everything you have to get the best possible marks.

NOT CHEATING, ...

...REVISION.

(DO NOT USE THE MARK SCHEME,
NOT YET.)



GET A PAPER

- SCIENCE TEACHERS
- AGA WEBSITE
- WEBSITES E.G. PHYSICS AND MATHS TUTOR, COGNITO

CARD IT

- MAKE REVISION CARDS
- USE LANGUAGE OF QUESTION PAPER AND MARK SCHEME

COMPLETE IT

- USING ANY OF:
- REVISION GUIDE
 - TEXT BOOKS
 - BBC BITESIZE
 - YOUTUBE
 - SCIENCE TEACHERS
 - NO MARK SCHEME YET

GCSE SCIENCE REVISION FOR EXAM SUCCESS

MARK IT

- NOW USE THE MARK SCHEME
- BE A BIT HARSH
- ASK IF UNSURE

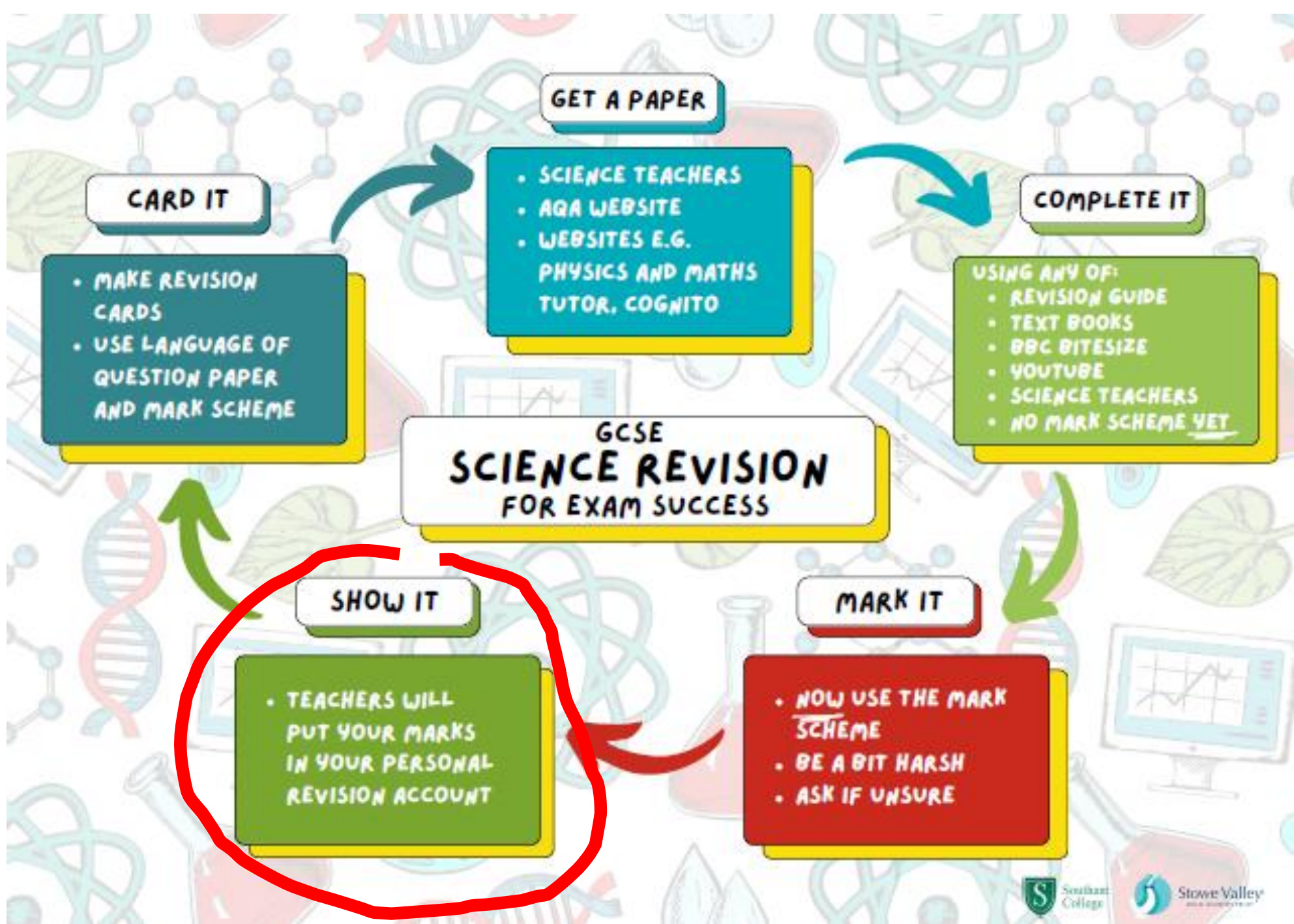
SHOW IT

- TEACHERS WILL PUT YOUR MARKS IN YOUR PERSONAL REVISION ACCOUNT

Now use the mark
scheme.

We will help you, ...

...but you must learn how
to do this yourself.



GET A PAPER

- SCIENCE TEACHERS
- AGA WEBSITE
- WEBSITES E.G. PHYSICS AND MATHS TUTOR, COGNITO

CARD IT

- MAKE REVISION CARDS
- USE LANGUAGE OF QUESTION PAPER AND MARK SCHEME

COMPLETE IT

- USING ANY OF:
- REVISION GUIDE
 - TEXT BOOKS
 - BBC BITESIZE
 - YOUTUBE
 - SCIENCE TEACHERS
 - NO MARK SCHEME YET

GCSE SCIENCE REVISION FOR EXAM SUCCESS

MARK IT

- NOW USE THE MARK SCHEME
- BE A BIT HARSH
- ASK IF UNSURE

SHOW IT

- TEACHERS WILL PUT YOUR MARKS IN YOUR PERSONAL REVISION ACCOUNT

GET A PAPER

- SCIENCE TEACHERS
- AGA WEBSITE
- WEBSITES E.G. PHYSICS AND MATHS TUTOR, COGNITO

COMPLETE IT

- USING ANY OF:
- REVISION GUIDE
 - TEXT BOOKS
 - BBC BITESIZE
 - YOUTUBE
 - SCIENCE TEACHERS
 - NO MARK SCHEME YET

CARD IT

- MAKE REVISION CARDS
- USE LANGUAGE OF QUESTION PAPER AND MARK SCHEME

GCSE SCIENCE REVISION FOR EXAM SUCCESS

MARK IT

- NOW USE THE MARK SCHEME
- BE A BIT HARSH
- ASK IF UNSURE

SHOW IT

- TEACHERS WILL PUT YOUR MARKS IN YOUR PERSONAL REVISION ACCOUNT

What are
proteins
made of?

Amino

acids

GET A PAPER

- SCIENCE TEACHERS
- AGA WEBSITE
- WEBSITES E.G. PHYSICS AND MATHS TUTOR, COGNITO

COMPLETE IT

- USING ANY OF:
- REVISION GUIDE
 - TEXT BOOKS
 - BBC BITESIZE
 - YOUTUBE
 - SCIENCE TEACHERS
 - NO MARK SCHEME YET

CARD IT

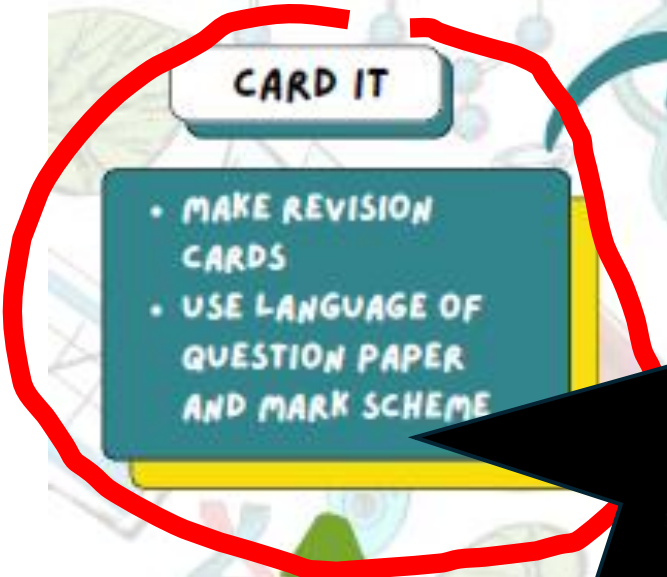
- MAKE REVISION CARDS
- USE LANGUAGE OF QUESTION PAPER AND MARK SCHEME

REVISION PROCESS

MARK IT

- NOW USE THE MARK SCHEME
- BE A BIT HARSH
- ASK IF UNSURE

- TEACHERS WILL PUT YOUR MARKS IN YOUR PERSONAL REVISION ACCOUNT



Make the cards.

Use them.

- Carry them.
- Test yourself.
- 2 piles:
- ‘know it’
- ‘don’t know it YET’
- Repeat with DKIY until it disappears
- start again
- Add new cards as you make them.





**KEEP
CALM**

AND

DO IT ALL

AGAIN

Metacognition

Understanding why
you are doing what
you are doing.

How to mess up your Science GCSEs

- Copy out all your notes again.
- Make all your notes into flash cards.
- Show off by talking about ‘hours spent revising’.
- Colour everything in.
- Just read through stuff.
- Spend more than 20-30 minutes on one thing.
- Aim too low, e.g.
‘I just need a 7 to do A level’ .
‘I’ll be happy with a 4,4’.

How to

GCSEs

- Copy notes again.
- Make notes into flash cards.
- Turn off by taking 'hours spent revising'.
- Put everything in.
- Read through stuff.
- More than 20-30 minutes
- An e.g.
- 'I just need to'
- 'I'll be happy with'

How to support your own GCSE student

- Encourage them to use small pieces of 'spare' time to make progress.

e.g. 'I'll wash up, you do a Science question while I do it, THEN I'll take you to football'.

'I'll make the packed lunches/ clean out the goldfish / walk the dog, you sit right there and do another question'

Show an interest.

e.g. 'How are you getting on with that Biology paper?'

'what paper are you going to do next?'

Be specific when 'giving a nudge'.

e.g. 'why don't you do another Chemistry question' ...

..not

'Go and do some revision!!!'

(what does that even mean?)

FAQ: When should they start revising?

Tonight – the first
PPEs are in
November.

FAQ: How often should they revise? They have other subjects too, you know.

The sooner they get started the less they need to do on any given night.

The more sleeps between starting revising and the exams, the better.

Fact.

FAQ: What if a question in a past paper features a topic I have not yet been taught?

Do it anyway.

Where's the harm?

(build some resilience)

FAQ: What happens if I run out of past papers?

Congratulations on doing all 48!

Now repeat your worst one and get a better score...

...my work here is done.

**So, what are you waiting
for?**



- Last fortnight you finished your first paper, 2018 Biology.
- This fortnight it's 2018 Chemistry .
- Bring your completed paper and 10 or more revision cards to the Science lesson on day 10.

How can students revise and how can you support them?



Check class charts **every day** and look at home learning the day it is set. Students can then contact their teacher if need.

Complete activities that will force them to regularly recall information and put it into practice. They can:

- Make mind-maps
- Revision poster and revision cards – colour code according to topic.
- Regularly quiz themselves (you can help here!) using flash cards and other revision materials.
- Complete past papers and exam questions, *ensuring they know the criteria for their target grade before they start.*

The impact of attendance:

- Above the 95% attendance target (max 9 days off) sees students achieving a grade higher than students who have between 85% and 95%.
- This grade loss becomes critical when considering students not making threshold for 6th form courses – e.g. 6 to 7 and even for college courses who see students achieving under the entry requirements by mere marks.
- Needless to say below 85% sees a drastic drop off with regards to grades achieved compared to similar performing peers.
- 85% is 29 days across the school year – it might seem a lot, but it is easy to accumulate, and odd days here and there really begin to add up
- Reports have attendance information: Please come into connect with us where you feel support is needed.



Study Seminars.

- Students will have the opportunity throughout the year to attend our study seminars.
- These sessions are scheduled after school using class charts.
- Unless stated otherwise students selected for study seminars have been specifically chosen by their teachers for bespoke support – this could be for a particular topic, skill or coursework
- We schedule these sessions via ClassCharts – it will initially show as an alert – similar how detentions are listed
- However, once the seminar has been attended the incident will be removed.
- Given staff time and resource preparation we ask commitment from students – should the study seminar not be attended the study seminar will be converted to a detention.
- There will be an opportunity for parents ‘opt-out’ of the study seminar program – information on this will follow



Ingredients for Success:



- Work continuously, and routinely throughout the year
 - We will be sending home regular ClassCharts prompts for what students should be focussed on during that period
- Ensure all home learning is completed. And to this end:
 - What routines are in place to support students with this?
 - What incentives are there for students to complete at home?
 - How do you know whether your child is completing their homework?
- Ensure there is a routine plan in place for the additional pieces of exam preparation (namely exam papers).
 - Does your son/daughter have these resources ready for when they are needed?

If you can't see the change, then nothing has changed