

LEA Name : Millville Area SD  
Address : PO Box 260  
Millville, PA 17846

County : Columbia  
AUN Number : 116195004  
LEA Type : SD

## Annual Financial Report Accuracy Certification Statement

For Fiscal Year Ending  
6/30/2022

Pennsylvania Department of Education

&

Office of Comptroller Operations

PDE-2056: Intermediate Unit

PDE-2057: School District, AVTS/CTC, Charter School,  
and Special Program Jointure

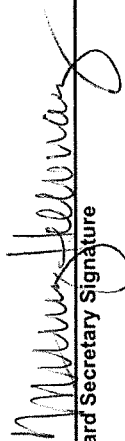
**CERTIFICATION:** By signing this page I agree that the electronic data submitted is a complete and accurate statement of the financial operations and status of the local education agency for the fiscal year. It has been prepared in accordance with generally accepted accounting principles and established Commonwealth of PA reporting guidelines.



Chief School Administrator Signature

Date

11/30/2022



Board Secretary Signature

Date

11/30/2022

Whitney B Holloway

(570)458-5538

Ext :3247

Contact Person

Contact Person Telephone Number

wholloway@millsd.us

(570)458-5584

Contact Person E-mail Address

Contact Person Fax Number

**Audit Certification**  
**Annual Financial Report:**  
For Fiscal Year Ending **6/30/2022**  
**(Pursuant to PA School Code Section 218(b))**

LEA Name : Millville Area SD  
AUN Number : 116195004  
County : Columbia

<b>Audit Certification Due:</b> 12/31/2022
---

**This certification is applicable to the Annual Financial Report data submitted through the Consolidated Financial Reporting System (CFRS).**

CERTIFICATION: By signing this page I agree that the financial statements of the school have been properly audited as noted above pursuant to Article XXIV, and in the auditor's professional opinion, the Annual Financial Report (PDE-2057) submitted through CFRS is materially consistent with the audited financial statements.

**Chief School Administrator**

**Board Secretary**

\_\_\_\_\_  
Signature

\_\_\_\_\_  
Date

\_\_\_\_\_  
Signature

\_\_\_\_\_  
Date

Whitney B Holloway

\_\_\_\_\_  
Contact Person

wholloway@millsd.us

\_\_\_\_\_  
Contact Person E-mail Address

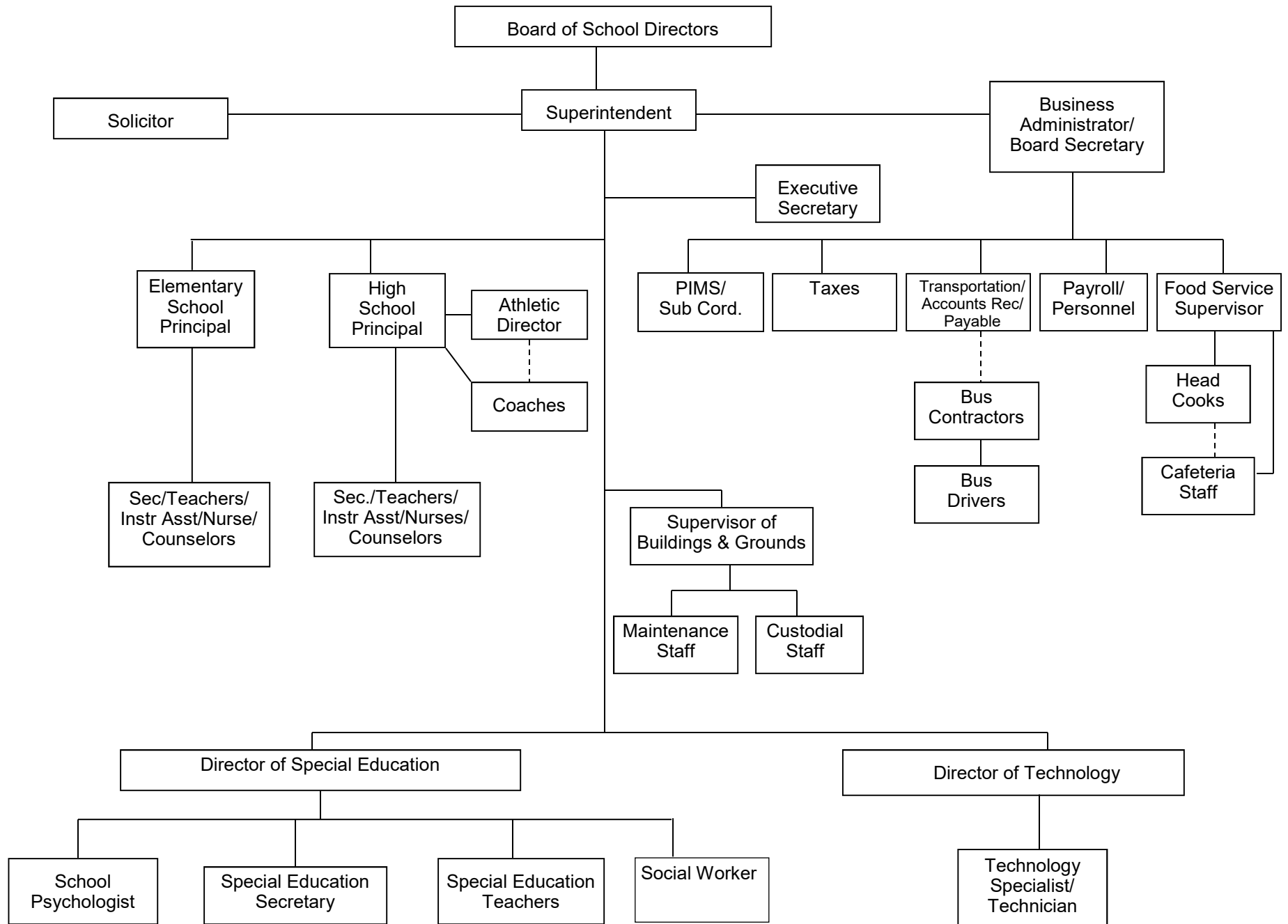
(570)458-5538      Ext :3247

\_\_\_\_\_  
Contact Person Telephone Number

(570)458-5584

\_\_\_\_\_  
Contact Person Fax Number

# MILLVILLE AREA SCHOOL DISTRICT ORGANIZATIONAL CHART 2021-2022





Book	Policy Manual
Section	600 Finances
Title	GASB Statement 34
Code	622
Status	Active
Adopted	November 13, 2017

**Purpose**

The Board recognizes the need to implement the required accounting and financial reporting standards stipulated by the Pennsylvania Department of Education.

The primary objectives of implementing the Governmental Accounting Standards Board (GASB) Statement 34 are to assure compliance with state requirements, and properly account for both the financial and economic resources of the district.

**Authority**

Participation of the school district in any such activity shall be in accordance with Board policy. [\[1\]](#)[\[2\]](#)

**Delegation of Responsibility**

The responsibility to coordinate the compilation and preparation of all information necessary to implement this policy is delegated to the Business Manager and/or Board Secretary.

The designated individual shall be responsible for implementing the necessary procedures to establish and maintain a fixed asset inventory, including depreciation schedules. Depreciation shall be computed on a straight-line basis over the useful lives of the assets, using an averaging convention. Normal maintenance and repairs shall be charged to expense as incurred; major renewals and betterments that materially extend the life or increase the value of the asset shall be capitalized. A schedule of accumulated depreciation shall be consistent from year to year. The basis for depreciation, including groups of assets and useful lives, shall be in writing and submitted for review to the Board.

The Business Manager shall prepare the required Management Discussion and Analysis (MD&A). The MD&A shall be in the form required by GASB Statement 34 and shall be submitted to the Board for approval, prior to publication.

Prior to submission of the MD&A for Board approval, the district's independent auditors shall review the MD&A, in accordance with SAS No. 52, "Required Supplementary Information".

Legal	<a href="#">1. 24 P.S. 218</a>
	<a href="#">2. 24 P.S. 613</a>
	Governmental Accounting Standards Board, Statement No. 34





Book	Policy Manual
Section	700 Property
Title	Property Records
Code	706
Status	Active
Adopted	January 22, 2018

### **Purpose**

The Board recognizes that adequate property and inventory records must be maintained on all buildings, equipment, and physical property under district control.

### **Authority**

The Board directs that a complete inventory, by physical count, of all district-owned equipment and property records of all district buildings and grounds shall be maintained and updated at intervals that coincide with property insurance renewal.

### **Definition**

For purposes of this policy, **equipment** shall mean a unit of furniture or furnishings, an instrument, a machine, an apparatus or a set of articles which retains its shape and appearance with use, is nonexpendable, and does not lose its identity when incorporated into a more complex unit.

### **Delegation of Responsibility**

It shall be the responsibility of the Business Manager to ensure that equipment inventories are systematically and accurately recorded, updated, and adjusted annually by reference to purchase orders and withdrawal reports. Property records of facilities shall be maintained on an ongoing basis.

### **Guidelines**

Major items of equipment shall be subject to annual physical spot check inventory to determine loss, location or depreciation; any major loss shall be reported to the Board.

Records of consumable supplies shall be maintained on a continuous inventory basis.

No equipment shall be removed for personal or nonschool use, except in accordance with Board policy.[1][2]

Equipment shall be identified with a permanent tag that provides appropriate school district identification.

Legal	1. Pol. 708
	2. Pol. 710
	<a href="#">24 P.S. 510</a>

High School Office  
PO Box 260  
570-458-5538 X 2303  
Fax 570-458-5583



## MILLVILLE AREA SCHOOL DISTRICT

PO Box 260 Millville, PA 17846  
570-458-5538 x 3220 Fax: 570-458-5584

Elementary Office  
PO Box 300  
570-458-5538 X 1000  
Fax 570-458-4715

### Footnote Excerpt:

Capital assets are capitalized at cost (or estimated historical cost) and updated for additions and reductions during the year. Donated fixed assets are recorded at their fair market value on the date of donation. The District maintains a capitalization threshold of \$1,000 which is applied to individual asset purchases or, in the case of the purchase of same or similar assets in a group, to the aggregated cost.

LEA : 116195004 Millville Area SD

Printed 12/1/2022 12:04:54 PM

<u>Val Number</u>	<u>Description</u>	<u>Justification</u>
10001	A PY AFR Revision has been started but has not been fully submitted. The CY AFR will not be approved until the PY revision is complete including all required signature documents. Please acknowledge your understanding of this by either entering the date the PY revision will be completed or stating that this revision was started in error and can be deleted by CFRS staff.	Please delete never started by Millville Area School District.
30160	Federal IDEA revenue has been reported in revenue code 8512 or 8513 rather than in code 6832 as pass thru funds. Please make corrections or provide an explanation. Receipt of IDEA funded COVID 19 SECIM grants correctly recorded to 8512 can be noted in the justification.  REV8512: \$7,341.74 REV8513: \$0.00	COVID 19 SECIM
42420	Expenditure Detail: Total current year 2700-513 expenditure varies from prior year by 10%. Correct the data or enter a justification.  2700-513, AFR Exp Detail: \$689,899.47 2700-513, PY AFR Amount: \$615,893.12	Additional days of transportation as previous year had more COVID virtual instruction days.
50440	SESS - 2260 Instruction and Curriculum Development Services: SESS Schedule amounts for Special Education vary from prior year by 40% or more. Correct the data or enter a justification.  SESS Schedule 2260: \$21,866.18 Prior Year SESS Schedule 2260: \$3,934.09	Additional training for new curriculum vs. the prior year.
50450	SESS - 2350 Legal and Accounting Services: SESS Schedule amounts for Special Education vary from prior year by 40% or more. Correct the data or enter a justification.  SESS Schedule 2350: \$320.61 Prior Year SESS Schedule 2350: \$129.84	Additional expense in the current year vs. prior, nothing significant.
50460	SESS - 2420 Medical Services: SESS Schedule amounts for Special Education vary from prior year by 40% or more. Correct the data or enter a justification.  SESS Schedule 2420: \$0.00 Prior Year SESS Schedule 2420: \$2,575.43	None in the current year.

LEA : 116195004 Millville Area SD

Printed 12/1/2022 12:03:04 PM

Amounts Expressed in Whole Dollars		<u>General Fund</u> <u>(10)</u>	<u>Student Sponsored</u> <u>Activity Fund</u> <u>(21)</u>	<u>Public Purpose Trust</u> <u>(27)</u>	<u>Other Compt Approved</u> <u>(28)</u>	<u>Athletic / Activity</u> <u>(29)</u>
<b>Assets And Deferred Outflows Of Resources</b>						
<b>Assets</b>						
0100	Cash and Cash Equivalents	3,591,022	65,533	109,705		
0110	Investments					
0120	Taxes Receivable	621,967				
0130	Due From Other Funds	131,731				
0141	Due From Other Governments	1,843,663				
0142	State Revenue Receivable					
0143	Federal Revenue Receivable					
0145	Other Intergovernmental Revenue Receivable					
0146	Due from Primary Government					
0147	Due from Component Unit					
0150	Other Receivables	2,700				
0170	Inventories					
0180	Prepaid Expenses (Expenditures)	100,424				
0190	Other Current Assets					
<b>Total Assets</b>		<b>\$6,291,507</b>	<b>\$65,533</b>	<b>\$109,705</b>		
0910	Deferred Outflows of Resources					
<b>Total Assets And Deferred Outflows Of Resources</b>		<b>\$6,291,507</b>	<b>\$65,533</b>	<b>\$109,705</b>		

LEA : 116195004     Millville Area SD

Amounts Expressed in Whole Dollars		<u>Capital Reserve (690.1850)</u> <u>(31)</u>	<u>Capital Reserve (1431)</u> <u>(32)</u>	<u>Other Capital Projects</u> <u>Fund</u> <u>(39)</u>	<u>Debt Service</u> <u>(40)</u>	<u>Permanent</u> <u>(90)</u>
<b>Assets And Deferred Outflows Of Resources</b>						
<b>Assets</b>						
0100	Cash and Cash Equivalents		2,649,049	42		
0110	Investments					
0120	Taxes Receivable					
0130	Due From Other Funds					
0141	Due From Other Governments					
0142	State Revenue Receivable					
0143	Federal Revenue Receivable					
0145	Other Intergovernmental Revenue Receivable					
0146	Due from Primary Government					
0147	Due from Component Unit					
0150	Other Receivables					
0170	Inventories					
0180	Prepaid Expenses (Expenditures)					
0190	Other Current Assets					
<b>Total Assets</b>			<b>\$2,649,049</b>	<b>\$42</b>		
0910	Deferred Outflows of Resources					
<b>Total Assets And Deferred Outflows Of Resources</b>			<b>\$2,649,049</b>	<b>\$42</b>		

LEA : 116195004     Millville Area SD

Printed 12/1/2022 12:03:04 PM

Amounts Expressed in Whole Dollars		<u>Total Governmental Funds</u>
<b>Assets And Deferred Outflows Of Resources</b>		
<b>Assets</b>		
0100 Cash and Cash Equivalents	6,415,351	
0110 Investments		
0120 Taxes Receivable	621,967	
0130 Due From Other Funds	131,731	
0141 Due From Other Governments	1,843,663	
0142 State Revenue Receivable		
0143 Federal Revenue Receivable		
0145 Other Intergovernmental Revenue Receivable		
0146 Due from Primary Government		
0147 Due from Component Unit		
0150 Other Receivables	2,700	
0170 Inventories		
0180 Prepaid Expenses (Expenditures)	100,424	
0190 Other Current Assets		
<b>Total Assets</b>	<b>\$9,115,836</b>	
0910 Deferred Outflows of Resources		
<b>Total Assets And Deferred Outflows Of Resources</b>	<b>\$9,115,836</b>	

LEA : 116195004 Millville Area SD

Printed 12/1/2022 12:03:04 PM

Amounts Expressed in Whole Dollars	<u>General Fund</u> <u>(10)</u>	<u>Student Sponsored</u> <u>Activity Fund</u> <u>(21)</u>	<u>Public Purpose Trust</u> <u>(27)</u>	<u>Other Compt Approved</u> <u>(28)</u>	<u>Athletic / Activity</u> <u>(29)</u>
<b>Liabilities And Deferred Inflows Of Resources And Fund Balances</b>					
<b>Liabilities</b>					
0400 Due to Other Funds					
0411 Due to Other Governments					
0412 Due to Primary Government					
0413 Due to Component Unit					
0420 Accounts Payable	539,164				
0430 Contracts Payable					
0440 Current Portion of Long-Term Debt					
0450 Short-Term Payables					
0461 Accrued Salaries and Benefits	1,617,528				
0462 Payroll Deductions and Withholding					
0480 Unearned Revenues	7,706				
0490 Other Current Liabilities	20,317				
<b>Total Liabilities</b>	<b>\$2,184,715</b>				
0950 Deferred Inflows of Resources	186,931				
<b>Fund Balances</b>					
0810 Nonspendable Fund Balance					
0820 Restricted Fund Balance		65,533	109,705		
0830 Committed Fund Balance	1,511,456				
0840 Assigned Fund Balance					
0850 Unassigned Fund Balance	2,408,405				
<b>Total Fund Balances</b>	<b>\$3,919,861</b>	<b>\$65,533</b>	<b>\$109,705</b>		
<b>Total Liabilities, Deferred Inflows Of Resources And Fund Balances</b>	<b>\$6,291,507</b>	<b>\$65,533</b>	<b>\$109,705</b>		

LEA : 116195004 Millville Area SD

Printed 12/1/2022 12:03:04 PM

Amounts Expressed in Whole Dollars		<u>Capital Reserve (690.</u> <u>1850)</u> <u>(31)</u>	<u>Capital Reserve (1431)</u> <u>(32)</u>	<u>Other Capital Projects</u> <u>Fund</u> <u>(39)</u>	<u>Debt Service</u> <u>(40)</u>	<u>Permanent</u> <u>(90)</u>
<b>Liabilities And Deferred Inflows Of Resources And Fund Balances</b>						
<b>Liabilities</b>						
0400	Due to Other Funds					
0411	Due to Other Governments					
0412	Due to Primary Government					
0413	Due to Component Unit					
0420	Accounts Payable					
0430	Contracts Payable					
0440	Current Portion of Long-Term Debt					
0450	Short-Term Payables					
0461	Accrued Salaries and Benefits					
0462	Payroll Deductions and Withholding					
0480	Unearned Revenues					
0490	Other Current Liabilities					
<b>Total Liabilities</b>						
0950	Deferred Inflows of Resources					
<b>Fund Balances</b>						
0810	Nonspendable Fund Balance					
0820	Restricted Fund Balance					
0830	Committed Fund Balance					
0840	Assigned Fund Balance		2,649,049	42		
0850	Unassigned Fund Balance					
<b>Total Fund Balances</b>			<b>\$2,649,049</b>	<b>\$42</b>		
<b>Total Liabilities, Deferred Inflows Of Resources And Fund Balances</b>			<b>\$2,649,049</b>	<b>\$42</b>		



LEA : 116195004     Millville Area SD

Printed 12/1/2022 12:03:04 PM

Amounts Expressed in Whole Dollars		<u>Total Governmental</u> <u>Funds</u>
<b>Liabilities And Deferred Inflows Of Resources And Fund Balances</b>		
<b>Liabilities</b>		
0400 Due to Other Funds		
0411 Due to Other Governments		
0412 Due to Primary Government		
0413 Due to Component Unit		
0420 Accounts Payable	539,164	
0430 Contracts Payable		
0440 Current Portion of Long-Term Debt		
0450 Short-Term Payables		
0461 Accrued Salaries and Benefits	1,617,528	
0462 Payroll Deductions and Withholding		
0480 Unearned Revenues	7,706	
0490 Other Current Liabilities	20,317	
<b>Total Liabilities</b>	<b>\$2,184,715</b>	
0950 Deferred Inflows of Resources	186,931	
<b>Fund Balances</b>		
0810 Nonspendable Fund Balance		
0820 Restricted Fund Balance	175,238	
0830 Committed Fund Balance	1,511,456	
0840 Assigned Fund Balance	2,649,091	
0850 Unassigned Fund Balance	2,408,405	
<b>Total Fund Balances</b>	<b>\$6,744,190</b>	
<b>Total Liabilities, Deferred Inflows Of Resources And Fund Balances</b>	<b>\$9,115,836</b>	

Amounts Expressed in Whole Dollars	<u>General Fund</u> <u>(10)</u>	<u>Student Sponsored</u> <u>Activity Fund</u> <u>(21)</u>	<u>Public Purpose Trust</u> <u>(27)</u>	<u>Other Compt Approved</u> <u>(28)</u>	<u>Athletic / Activity</u> <u>(29)</u>
<b>Revenues</b>					
6000 Revenue from Local Sources	6,262,778	72,053	561		
7000 Revenue from State Sources	7,031,608				
8000 Revenue from Federal Sources	1,151,206				
<b>Total Revenues</b>	<b>\$14,445,592</b>	<b>\$72,053</b>	<b>\$561</b>		
<b>Expenditures</b>					
1000 Instruction	8,312,223				
2000 Support Services	5,127,328				
3000 Operation of Non-Instructional Services	295,868	71,508	8,900		
4000 Facilities Acquisition, Construction and Improvement Services	192,442				
5110 Debt Service	320,524				
5130 Refund of Prior Year Revenues / Receipts					
5140 Leases					
<b>Total Expenditures</b>	<b>\$14,248,385</b>	<b>\$71,508</b>	<b>\$8,900</b>		
<b>Excess (Deficiency) Of Revenues Over Expenditures</b>	<b>\$197,207</b>	<b>\$545</b>	<b>(\$8,339)</b>		
<b>Other Financing Sources (Uses)</b>					
9110 Face Value of Bonds Issued					
9120 Proceeds from Refunding of Bonds					
9130 Bond Premiums					
9200 Proceeds from Extended-Term Financing and Leases					
9300 Interfund Transfers - IN					
9400 Sale of or Compensation for Loss of Fixed Assets					
9710 Transfers from Component Units					
9720 Transfers from Primary Governments					
9910 Other Financing Sources Not Listed in the 9000 Series					
9990 Insurance Recoveries	25,500				
5120 Debt Service – Refunded Bonds					
5150 Bond Discounts					
5200 Interfund Transfers – Out					
5300 Transfers Out to Component Units/Primary Governments					
<b>Total Other Financing Sources (Uses)</b>	<b>\$25,500</b>				

LEA : 116195004 Millville Area SD

Printed 12/1/2022 12:03:11 PM

Amounts Expressed in Whole Dollars		<u>Capital Reserve (690.</u> <u>1850)</u> <u>(31)</u>	<u>Capital Reserve (1431)</u> <u>(32)</u>	<u>Other Capital Projects</u> <u>Fund</u> <u>(39)</u>	<u>Debt Service</u> <u>(40)</u>	<u>Permanent</u> <u>(90)</u>
<b>Revenues</b>						
6000	Revenue from Local Sources		5,230			
7000	Revenue from State Sources					
8000	Revenue from Federal Sources					
<b>Total Revenues</b>			<b>\$5,230</b>			
<b>Expenditures</b>						
1000	Instruction					
2000	Support Services					
3000	Operation of Non-Instructional Services					
4000	Facilities Acquisition, Construction and Improvement Services					
5110	Debt Service					
5130	Refund of Prior Year Revenues / Receipts					
5140	Leases					
<b>Total Expenditures</b>						
<b>Excess (Deficiency) Of Revenues Over Expenditures</b>			<b>\$5,230</b>			
<b>Other Financing Sources (Uses)</b>						
9110	Face Value of Bonds Issued					
9120	Proceeds from Refunding of Bonds					
9130	Bond Premiums					
9200	Proceeds from Extended-Term Financing and Leases					
9300	Interfund Transfers - IN					
9400	Sale of or Compensation for Loss of Fixed Assets					
9710	Transfers from Component Units					
9720	Transfers from Primary Governments					
9910	Other Financing Sources Not Listed in the 9000 Series					
9990	Insurance Recoveries					
5120	Debt Service – Refunded Bonds					
5150	Bond Discounts					
5200	Interfund Transfers – Out					
5300	Transfers Out to Component Units/Primary Governments					
<b>Total Other Financing Sources (Uses)</b>						

Amounts Expressed in Whole Dollars		<u>Total Governmental Funds</u>
<b>Revenues</b>		
6000	Revenue from Local Sources	6,340,622
7000	Revenue from State Sources	7,031,608
8000	Revenue from Federal Sources	1,151,206
<b>Total Revenues</b>		<b>\$14,523,436</b>
<b>Expenditures</b>		
1000	Instruction	8,312,223
2000	Support Services	5,127,328
3000	Operation of Non-Instructional Services	376,276
4000	Facilities Acquisition, Construction and Improvement Services	192,442
5110	Debt Service	320,524
5130	Refund of Prior Year Revenues / Receipts	
5140	Leases	
<b>Total Expenditures</b>		<b>\$14,328,793</b>
<b>Excess (Deficiency) Of Revenues Over Expenditures</b>		<b>\$194,643</b>
<b>Other Financing Sources (Uses)</b>		
9110	Face Value of Bonds Issued	
9120	Proceeds from Refunding of Bonds	
9130	Bond Premiums	
9200	Proceeds from Extended-Term Financing and Leases	
9300	Interfund Transfers - IN	
9400	Sale of or Compensation for Loss of Fixed Assets	
9710	Transfers from Component Units	
9720	Transfers from Primary Governments	
9910	Other Financing Sources Not Listed in the 9000 Series	
9990	Insurance Recoveries	25,500
5120	Debt Service – Refunded Bonds	
5150	Bond Discounts	
5200	Interfund Transfers – Out	
5300	Transfers Out to Component Units/Primary Governments	
<b>Total Other Financing Sources (Uses)</b>		<b>\$25,500</b>

Amounts Expressed in Whole Dollars		<u>General Fund</u> <u>(10)</u>	<u>Student Sponsored</u> <u>Activity Fund</u> <u>(21)</u>	<u>Public Purpose Trust</u> <u>(27)</u>	<u>Other Compt Approved</u> <u>(28)</u>	<u>Athletic / Activity</u> <u>(29)</u>
<b>Special And Extraordinary Items</b>						
9920 Special Items – Gains						
9930 Extraordinary Items – Gains						
5520 Special Items – Losses						
5530 Extraordinary Items – Losses						
<b>Net Change In Fund Balances</b>		<b>\$222,707</b>	<b>\$545</b>	<b>(\$8,339)</b>		
<b>Fund Balance</b>						
0001 Fund Balance - Beginning of Fiscal Year		3,697,154	64,988	118,044		
<b>Fund Balance - End Of Year</b>		<b>\$3,919,861</b>	<b>\$65,533</b>	<b>\$109,705</b>		

Amounts Expressed in Whole Dollars		<u>Capital Reserve (690.</u> <u>1850)</u> <u>(31)</u>	<u>Capital Reserve (1431)</u> <u>(32)</u>	<u>Other Capital Projects</u> <u>Fund</u> <u>(39)</u>	<u>Debt Service</u> <u>(40)</u>	<u>Permanent</u> <u>(90)</u>
<b>Special And Extraordinary Items</b>						
9920	Special Items – Gains					
9930	Extraordinary Items – Gains					
5520	Special Items – Losses					
5530	Extraordinary Items – Losses					
<b>Net Change In Fund Balances</b>			<b>\$5,230</b>			
<b>Fund Balance</b>						
0001	Fund Balance - Beginning of Fiscal Year		2,643,819	42		
<b>Fund Balance - End Of Year</b>			<b>\$2,649,049</b>	<b>\$42</b>		

Amounts Expressed in Whole Dollars		<u>Total Governmental</u> <u>Funds</u>
<b>Special And Extraordinary Items</b>		
9920	Special Items – Gains	
9930	Extraordinary Items – Gains	
5520	Special Items – Losses	
5530	Extraordinary Items – Losses	
<b>Net Change In Fund Balances</b>		<b>\$220,143</b>
<b>Fund Balance</b>		
0001	Fund Balance - Beginning of Fiscal Year	6,524,047
<b>Fund Balance - End Of Year</b>		<b>\$6,744,190</b>

LEA : 116195004     Millville Area SD

Printed 12/1/2022 12:03:15 PM

Amounts Expressed in Whole Dollars	<u>Food Service</u> <u>(51)</u>	<u>Child Care</u> <u>Operations</u> <u>(52)</u>	<u>Other Enterprise</u> <u>(58)</u>	<u>TOTAL</u>	<u>Internal Service</u> <u>(60)</u>
<b>Assets And Deferred Outflows Of Resources</b>					
<b>Current Assets</b>					
0100 Cash and Cash Equivalents	144,547			144,547	
0110 Investments					
0130 Due From Other Funds					
0141 Due From Other Governments	14,338			14,338	
0142 State Revenue Receivable					
0143 Federal Revenue Receivable					
0146 Due from Primary Government					
0147 Due from Component Unit					
0150 Other Receivables					
0170 Inventories	1,332			1,332	
0180 Prepaid Expenses (Expenditures)					
0190 Other Current Assets					
<b>Total Current Assets</b>	<b>\$160,217</b>			<b>\$160,217</b>	
<b>Noncurrent Assets</b>					
0211 Land					
0212 Site Improvements (Net)					
0220 Buildings and Building Improvements (Net)					
0230 Machinery, Equipment and Furniture (Net)	133			133	
0250 Construction in Progress					
0260 Long Term Prepayments					
0290 Other Noncurrent Assets					
<b>Total Noncurrent Assets</b>	<b>\$133</b>			<b>\$133</b>	
0910 Deferred Outflows of Resources					
<b>Total Assets And Deferred Outflows Of Resources</b>	<b>\$160,350</b>			<b>\$160,350</b>	



LEA : 116195004     Millville Area SD

Printed 12/1/2022 12:03:15 PM

Amounts Expressed in Whole Dollars	<u>Food Service</u> <u>(51)</u>	<u>Child Care</u> <u>Operations</u> <u>(52)</u>	<u>Other Enterprise</u> <u>(58)</u>	<u>TOTAL</u>	<u>Internal Service</u> <u>(60)</u>
<b>Liabilities And Deferred Inflows Of Resources And Net Position</b>					
<b>Current Liabilities</b>					
0400 Due to Other Funds	131,731			131,731	
0411 Due to Other Governments					
0413 Due to Component Unit					
0420 Accounts Payable	10,526			10,526	
0430 Contracts Payable					
0440 Current Portion of Long-Term Debt					
0450 Short-Term Payables					
0461 Accrued Salaries and Benefits					
0462 Payroll Deductions and Withholding					
0480 Unearned Revenues					
0490 Other Current Liabilities	16,773			16,773	
<b>Total Current Liabilities</b>	<b>\$159,030</b>			<b>\$159,030</b>	
<b>Noncurrent Liabilities</b>					
0510 Bonds Payable					
0520 Extended-Term Financing Agreements Payable					
0530 Lease Obligations					
0540 Accumulated Compensated Absences					
0550 Authority Lease Obligations					
0560 Other Post-Employment Benefits (OPEB)					
0570 Net Pension Liability					
0599 Other Noncurrent Liabilities					
<b>Total Noncurrent Liabilities</b>					
<b>Total Liabilities</b>	<b>\$159,030</b>			<b>\$159,030</b>	
0950 Deferred Inflows of Resources					
<b>Net Position</b>					
0791 Net Investment in Capital Assets	133			133	
0008 Restricted Net Position (0792 – 0798)					
0799 Unrestricted Net Position	1,187			1,187	
<b>Total Net Position</b>	<b>\$1,320</b>			<b>\$1,320</b>	
<b>Total Liabilities And Deferred Inflows Of Resources And Net Position</b>	<b>\$160,350</b>			<b>\$160,350</b>	

Amounts Expressed in Whole Dollars	<u>Food Service</u> <u>(51)</u>	<u>Child Care Operations</u> <u>(52)</u>	<u>Other Enterprise</u> <u>(58)</u>	<u>TOTAL</u>	<u>Internal Service</u> <u>(60)</u>
<b>Operating Revenues</b>					
6600 Food Service Revenue	38,437			38,437	
0071 Charges for Services					
0072 Other Operating Revenue					
<b>Total Operating Revenues</b>	<b>\$38,437</b>			<b>\$38,437</b>	
<b>Operating Expenses</b>					
100 Personnel Services – Salaries	97,067			97,067	
200 Personnel Services – Employee Benefits	44,792			44,792	
300 Purchased Professional and Technical Services					
400 Purchased Property Services	9,595			9,595	
500 Other Purchased Services	162,358			162,358	
600 Supplies	21,742			21,742	
740 Depreciation	267			267	
810 Dues and Fees	146			146	
880 Refunds of Prior Years' Receipts					
890 Miscellaneous Expenditures					
<b>Total Operating Expenses</b>	<b>\$335,967</b>			<b>\$335,967</b>	
<b>Operating Income (Loss)</b>	<b>(\$297,530)</b>			<b>(\$297,530)</b>	
<b>Non Operating Revenues (Expenses)</b>					
6500 Earnings on Investments					
6920 Contributions and Donations from Private Sources					
6930 Gains or Losses on Sale of Fixed Assets					
6991 Refunds of a Prior Year Expenditure					
7000 Revenue from State Sources	31,219			31,219	
8000 Revenue from Federal Sources	414,572			414,572	
9990 Insurance Recoveries					
820 Claims and Judgments Against the LEA					
830 Interest					
<b>TOTAL Non Operating Revenues (Expenses)</b>	<b>\$445,791</b>			<b>\$445,791</b>	
<b>Income (Loss) Before Contributions And Transfers</b>	<b>\$148,261</b>			<b>\$148,261</b>	

Amounts Expressed in Whole Dollars	<u>Food Service</u> <u>(51)</u>	<u>Child Care Operations</u> <u>(52)</u>	<u>Other Enterprise</u> <u>(58)</u>	<u>TOTAL</u>	<u>Internal Service</u> <u>(60)</u>
<b>Contributions, Transfers, and Special and Extraordinary Items</b>					
5200 Interfund Transfers – Out					
5300 Transfers Out to Component Units/Primary Governments					
5520 Special Items – Losses					
5530 Extraordinary Items – Losses					
9300 Interfund Transfers - IN					
9500 Capital Contributions					
9700 Transfers IN From Component Units/Primary Governments					
9920 Special Items – Gains					
9930 Extraordinary Items – Gains					
<b>Change In Net Position</b>	<b>\$148,261</b>			<b>\$148,261</b>	
0002 Net Position - Beginning of Fiscal Year	(146,941)			(146,941)	
0003 Accounting Changes / Residual Equity Transfers					
<b>Net Position - End Of Year</b>	<b>\$1,320</b>			<b>\$1,320</b>	

LEA : 116195004     Millville Area SD

Printed 12/1/2022 12:03:27 PM

Amounts Expressed in Whole Dollars		<u>Food Service</u> <u>(51)</u>	<u>Child Care Operations</u> <u>(52)</u>	<u>Other Enterprise</u> <u>(58)</u>	<u>TOTAL</u>	<u>Internal Service(60)</u>
<b>Cash Flows From Operating Activities</b>						
0011	Cash Receipts From Users	38,437			38,437	
0012	Cash Receipts From Assessments Made to Other Funds					
0013	Cash Receipts From Earnings on Investments					
0014	Cash Receipts From Other Operating Revenue					
0015	Cash Payments To Employees For Services	141,859			141,859	
0016	Cash Payments For Insurance Claims					
0017	Cash Payments To Suppliers For Goods and Services	216,586			216,586	
0018	Cash Payments For Other Operating Expenses					
<b>Net Cash Provided By (Used For) Operating Activities</b>		<b>(\$320,008)</b>			<b>(\$320,008)</b>	
<b>Cash Flows From Non-Capital Financing Activities</b>						
0021	Receipts From Local Sources - 6000					
0022	Receipts From State Sources - 7000	32,642			32,642	
0023	Receipts From Federal Sources -8000	419,162			419,162	
0024	Notes and Loans Received (Repaid)					
0025	Interest Paid on Notes/Loans - 5100-830					
0026	Operating Transfers In (Out)/Residual Equity Trans	(198,178)			(198,178)	
0027	Operating Transfers In (Out) Primary Government / Comp Unit					
0028	Receipts From Refund of Prior Year Expenditures - 6991					
0029	Special and Extraordinary Gains (losses)					
0030	Receipts from Insurance Recoveries -9990					
<b>Net Cash Prov By (Used for) Non-Capital Financing Activities</b>		<b>\$253,626</b>			<b>\$253,626</b>	
<b>Cash Flows From Capital and Related Financing Activities</b>						
0031	Payments For Fac Acq, Const, and Imp - 4000					
0032	Gain / (Loss) on Sale of Fixed Assets - 6930					
0033	Proceeds From Extended Term Financing - 9200					
0034	Principal Paid on Financing Agreements					
0035	Interest Paid on Financing Agreements - 5100-830					
0036	(Inc) Dec in Contributed Capital					
<b>Net Cash Prov By (Used for) Capital and Related Financing Activities</b>						
<b>Cash Flows From Investing Activities</b>						
0041	Earnings on Investments - 6500					
0042	Purchase of Inv Securities / Deposits to Inv Pools					
0043	Receipts From Investment Pool Withdrawals					
0044	Proceeds from Sale and Maturity of Inv Securities					

LEA : 116195004      Millville Area SD

Printed 12/1/2022 12:03:27 PM

0045   Loans Received (Paid)

**Net Cash Prov By (Used for) Investing Activities**

LEA : 116195004 Millville Area SD

Printed 12/1/2022 12:03:27 PM

	<u>Food Service</u> <u>(51)</u>	<u>Child Care Operations</u> <u>(52)</u>	<u>Other Enterprise</u> <u>(58)</u>	<u>TOTAL</u>	<u>Internal Service</u> <u>(60)</u>
<b>Net Increase (Decrease) in Cash Flows</b>	<b>(66,382)</b>			<b>(66,382)</b>	
0004 Cash and Cash Equivalents Beginning of Year	210,929			210,929	
<b>Cash and Cash Equivalents at Year End</b>	<b>\$144,547</b>			<b>\$144,547</b>	
<b>Reconciliation of Operating Income (Loss) To Net Cash Provided by (Used For) Operating Activities</b>					
0005 Operating Income (Loss) per REP	(297,530)			(297,530)	
<b>Adjustments</b>					
0051 Depreciation and Net Amortization	267			267	
0052 Provision for Uncollectible Accounts					
0053 Other Adjustments					
<b>Effect of Changes in Assets, Liabilities, Deferred Outflows and Deferred Inflows</b>					
0054 (Inc) Dec In Accounts Receivable (0120-0150)					
0055 Advances to Other Funds (0160)					
0056 (Inc) Dec in Inventories (0170)	(563)			(563)	
0057 (Inc) Dec in Prepaid Expenses (0180)					
0058 (Inc) Dec in Other Current or Noncurrent Assets					
0064 Deferred Outflows (0910)					
0059 Inc (Dec) in Accounts Payable (0400-0450)	(22,182)			(22,182)	
0060 Inc (Dec) in Accrued Salaries/Benefits (0461)					
0065 Inc (Dec) in Net Pension Liabilities (0570)					
0066 Inc (Dec) in Other Postemp Benefit Oblig (0560)					
0061 Inc (Dec) in Payroll Deductions/Withholding (0462)					
0062 Inc (Dec) in Unearned Revenue (0480)					
0063 Inc (Dec) in Other Current or Noncurrent Liabilities					
0067 Deferred Inflows (0950)					
<b>Total Adjustments</b>	<b>(\$22,478)</b>			<b>(\$22,478)</b>	
<b>Cash Provided By (Used for) Total</b>	<b>(\$320,008)</b>			<b>(\$320,008)</b>	

COMBINED STATEMENT OF CASH FLOWS  
SCHEDULE OF NONCASH INVESTING, CAPITAL, AND FINANCING ACTIVITIES

Explanation of Transaction and Balance Sheet Effect	Amount
Total	

LEA : 116195004 Millville Area SD

General Fund (10)

Printed 12/1/2022 12:03:31 PM

Page - 1 of 4

	Revenue Reported In Current Year	Current Year Tax Accrual	Prior Year Tax Accrual	Taxes Collected In Current Year
<b>Revenue from Local Sources</b>				
6111 Current Real Estate Taxes	4,040,241.69			4,040,241.69
6113 Public Utility Realty Taxes	5,356.33			5,356.33
6114 Payments in Lieu of Current Taxes - State / Local	5,202.36			5,202.36
6151 Current Act 511 Earned Income Taxes	1,443,349.94			1,443,349.94
6153 Current Act 511 Real Estate Transfer Taxes	105,008.86			105,008.86
6411 Delinquent Real Estate Taxes	225,534.98			225,534.98
6500 Earnings on Investments	6,450.99			
6700 Revenues from LEA Activities	13,202.10			
6832 Federal IDEA Revenue Received as Pass Through	158,529.57			
6833 Federal ARRA IDEA Revenue Received as Pass Through	32,979.22			
6920 Contributions and Donations from Private Sources	94,696.02			
6944 Receipts from Other LEAs in Pennsylvania - Education	86,615.92			
6999 Other Revenues Not Specified Above	45,610.16			
<b>TOTAL Revenue from Local Sources</b>	<b>\$6,262,778.14</b>			<b>\$5,824,694.16</b>



	Revenue Reported In Current Year			
<b><u>Revenue from State Sources</u></b>				
7111 Basic Education Funding-Formula	4,265,649.76			
7112 Basic Education Funding-Social Security	231,809.29			
7160 Tuition for Orphans Subsidy	47,404.48			
7271 Special Education funds for School-Aged Pupils	542,041.95			
7311 Pupil Transportation Subsidy	355,761.15			
7312 Nonpublic and Charter School Pupil Transportation Subsidy	11,550.00			
7330 Health Services (Medical, Dental, Nurse, Act 25)	10,699.17			
7340 State Property Tax Reduction Allocation	283,517.76			
7505 Ready to Learn Block Grant	115,997.00			
7820 State Share of Retirement Contributions	1,167,177.69			
<b>TOTAL Revenue from State Sources</b>	<b>\$7,031,608.25</b>			

Revenue Reported In Current Year				
Revenue from Federal Sources				
8512 IDEA, Part B	7,341.74			
8514 NCLB, Title I - Improving the Academic Achievement of the Disadvantaged	214,257.76			
8515 NCLB, Title II - Preparing, Training and Recruiting High Quality Teachers and Principals	32,137.00			
8517 NCLB, Title IV - 21St Century Schools	10,748.80			
8743 ESSER II - Elementary and Secondary School Emergency Relief Fund	528,914.62			
8744 ARP ESSER - Elementary and Secondary School Emergency Relief Fund	334,693.59			
8749 Other CARES Act Funding	18,051.00			
8753 ARP ESSER Afterschool Programs	0.03			
8820 Medical Assistance Reimbursement for Administrative Claiming (Quarterly) Program	5,061.58			
TOTAL Revenue from Federal Sources	\$1,151,206.12			

	Revenue Reported In Current Year	
<b><u>Other Financing Sources</u></b>		
9990 Insurance Recoveries	25,499.88	
<b>TOTAL Other Financing Sources</b>	<b>\$25,499.88</b>	
<b>TOTAL FROM ALL SOURCES</b>	<b>\$14,471,092.39</b>	<b>\$5,824,694.16</b>

LEA : 116195004 Millville Area SD

Printed 12/1/2022 12:03:35 PM

	<u>General Fund (10)</u>	<u>Student Sponsored Activity Fund (21)</u>	<u>Public Purpose Trust (27)</u>	<u>Other Compt Approved (28)</u>	<u>Athletic / Activity (29)</u>	<u>Capital Reserve (690, 1850) (31)</u>
<b>6000 Revenue from Local Sources</b>						
6111 Current Real Estate Taxes	4,040,241.69					
6113 Public Utility Realty Taxes	5,356.33					
6114 Payments in Lieu of Current Taxes - State / Local	5,202.36					
6151 Current Act 511 Earned Income Taxes	1,443,349.94					
6153 Current Act 511 Real Estate Transfer Taxes	105,008.86					
6411 Delinquent Real Estate Taxes	225,534.98					
6500 Earnings on Investments	6,450.99	34.00	61.00			
6700 Revenues from LEA Activities	13,202.10					
6832 Federal IDEA Revenue Received as Pass Through	158,529.57					
6833 Federal ARRA IDEA Revenue Received as Pass Through	32,979.22					
6920 Contributions and Donations from Private Sources	94,696.02	72,019.00	500.00			
6944 Receipts from Other LEAs in Pennsylvania - Education	86,615.92					
6999 Other Revenues Not Specified Above	45,610.16					
<b>6000 Total Revenue from Local Sources</b>	<b>\$6,262,778.14</b>	<b>\$72,053.00</b>	<b>\$561.00</b>			
<b>7000 Revenue from State Sources</b>						
7111 Basic Education Funding-Formula	4,265,649.76					
7112 Basic Education Funding-Social Security	231,809.29					
7160 Tuition for Orphans Subsidy	47,404.48					
7271 Special Education funds for School-Aged Pupils	542,041.95					
7311 Pupil Transportation Subsidy	355,761.15					
7312 Nonpublic and Charter School Pupil Transportation Subsidy	11,550.00					
7330 Health Services (Medical, Dental, Nurse, Act 25)	10,699.17					
7340 State Property Tax Reduction Allocation	283,517.76					
7505 Ready to Learn Block Grant	115,997.00					
7820 State Share of Retirement Contributions	1,167,177.69					
<b>7000 Total Revenue from State Sources</b>	<b>\$7,031,608.25</b>					
<b>8000 Revenue from Federal Sources</b>						
8512 IDEA, Part B	7,341.74					
8514 NCLB, Title I - Improving the Academic Achievement of the Disadvantaged	214,257.76					
8515 NCLB, Title II - Preparing, Training and Recruiting High Quality Teachers and Principals	32,137.00					
8517 NCLB, Title IV - 21st Century Schools	10,748.80					
8743 ESSER II - Elementary and Secondary School Emergency Relief Fund	528,914.62					
8744 ARP ESSER - Elementary and Secondary School Emergency Relief Fund	334,693.59					
8749 Other CARES Act Funding	18,051.00					

LEA : 116195004 Millville Area SD

Printed 12/1/2022 12:03:35 PM

	<u>Capital Reserve</u> <u>(1431) (32)</u>	<u>Other Capital</u> <u>Projects Fund (39)</u>	<u>Debt Service (40)</u>	<u>Permanent (90)</u>	<u>Total</u>
<b>6000 Revenue from Local Sources</b>					
6111 Current Real Estate Taxes					4,040,241.69
6113 Public Utility Realty Taxes					5,356.33
6114 Payments in Lieu of Current Taxes - State / Local					5,202.36
6151 Current Act 511 Earned Income Taxes					1,443,349.94
6153 Current Act 511 Real Estate Transfer Taxes					105,008.86
6411 Delinquent Real Estate Taxes					225,534.98
6500 Earnings on Investments	5,230.00				11,775.99
6700 Revenues from LEA Activities					13,202.10
6832 Federal IDEA Revenue Received as Pass Through					158,529.57
6833 Federal ARRA IDEA Revenue Received as Pass Through					32,979.22
6920 Contributions and Donations from Private Sources					167,215.02
6944 Receipts from Other LEAs in Pennsylvania - Education					86,615.92
6999 Other Revenues Not Specified Above					45,610.16
<b>6000 Total Revenue from Local Sources</b>	<b>\$5,230.00</b>				<b>\$6,340,622.14</b>
<b>7000 Revenue from State Sources</b>					
7111 Basic Education Funding-Formula					4,265,649.76
7112 Basic Education Funding-Social Security					231,809.29
7160 Tuition for Orphans Subsidy					47,404.48
7271 Special Education funds for School-Aged Pupils					542,041.95
7311 Pupil Transportation Subsidy					355,761.15
7312 Nonpublic and Charter School Pupil Transportation Subsidy					11,550.00
7330 Health Services (Medical, Dental, Nurse, Act 25)					10,699.17
7340 State Property Tax Reduction Allocation					283,517.76
7505 Ready to Learn Block Grant					115,997.00
7820 State Share of Retirement Contributions					1,167,177.69
<b>7000 Total Revenue from State Sources</b>					<b>\$7,031,608.25</b>
<b>8000 Revenue from Federal Sources</b>					
8512 IDEA, Part B					7,341.74
8514 NCLB, Title I - Improving the Academic Achievement of the Disadvantaged					214,257.76
8515 NCLB, Title II - Preparing, Training and Recruiting High Quality Teachers and Principals					32,137.00
8517 NCLB, Title IV - 21st Century Schools					10,748.80
8743 ESSER II - Elementary and Secondary School Emergency Relief Fund					528,914.62
8744 ARP ESSER - Elementary and Secondary School Emergency Relief Fund					334,693.59
8749 Other CARES Act Funding					18,051.00

LEA : 116195004 Millville Area SD

Printed 12/1/2022 12:03:35 PM

	<u>General Fund (10)</u>	<u>Student Sponsored Activity Fund (21)</u>	<u>Public Purpose Trust (27)</u>	<u>Other Compt Approved (28)</u>	<u>Athletic / Activity (29)</u>	<u>Capital Reserve (690, 1850) (31)</u>
<b>8000 Revenue from Federal Sources</b>						
8753 ARP ESSER Afterschool Programs	0.03					
8820 Medical Assistance Reimbursement for Administrative Claiming (Quarterly) Program	5,061.58					
<b>8000 Total Revenue from Federal Sources</b>	<b>\$1,151,206.12</b>					
<b>9000 Other Financing Sources</b>						
9990 Insurance Recoveries	25,499.88					
<b>9000 Total Other Financing Sources</b>	<b>\$25,499.88</b>					
<b>Total From All Sources</b>	<b>\$14,471,092.39</b>	<b>\$72,053.00</b>	<b>\$561.00</b>			

LEA : 116195004 Millville Area SD

Printed 12/1/2022 12:03:35 PM

	<u>Capital Reserve</u> <u>(1431) (32)</u>	<u>Other Capital</u> <u>Projects Fund (39)</u>	<u>Debt Service (40)</u>	<u>Permanent (90)</u>	<u>Total</u>
<b>8000 Revenue from Federal Sources</b>					
8753 ARP ESSER Afterschool Programs					0.03
8820 Medical Assistance Reimbursement for Administrative Claiming (Quarterly) Program					5,061.58
<b>8000 Total Revenue from Federal Sources</b>					<b>\$1,151,206.12</b>
<b>9000 Other Financing Sources</b>					
9990 Insurance Recoveries					25,499.88
<b>9000 Total Other Financing Sources</b>					<b>\$25,499.88</b>
<b>Total From All Sources</b>	<b>\$5,230.00</b>				<b>\$14,548,936.39</b>

LEA : 116195004 Millville Area SD

Printed 12/1/2022 12:03:39 PM

	<u>General Fund (10)</u>	<u>Student Sponsored Activity Fund (21)</u>	<u>Public Purpose Trust (27)</u>	<u>Other Compt Approved (28)</u>	<u>Athletic / Activity (29)</u>	<u>Capital Reserve (690. 1850) (31)</u>
Revenue from Local Sources	6,262,778.14	72,053.00	561.00			
Revenue from State Sources	7,031,608.25					
Revenue from Federal Sources	1,151,206.12					
Other Financing Sources	25,499.88					
Total From All Sources	\$14,471,092.39	\$72,053.00	\$561.00			



LEA : 116195004     Millville Area SD

Printed 12/1/2022 12:03:39 PM

	<u>Capital Reserve (1431)</u> <u>(32)</u>	<u>Other Capital Projects</u> <u>Fund (39)</u>	<u>Debt Service (40)</u>	<u>Permanent (90)</u>	<u>Total</u>
Revenue from Local Sources	5,230.00				6,340,622.14
Revenue from State Sources					7,031,608.25
Revenue from Federal Sources					1,151,206.12
Other Financing Sources					25,499.88
Total From All Sources	\$5,230.00				\$14,548,936.39

LEA : 116195004 Millville Area SD

Printed 12/1/2022 12:03:42 PM

General Fund (10)

1000 Instruction	Total
100 <u>Personnel Services – Salaries</u>	
100 Personnel Services – Salaries	4,119,668.99
<b>Total Personnel Services – Salaries</b>	<b>\$4,119,668.99</b>
200 <u>Personnel Services – Employee Benefits</u>	
210 Group Insurance – Contracted Provider	822,861.87
220 Social Security Contributions	301,875.37
230 PSERS Retirement Contributions	1,427,557.57
250 Unemployment Compensation	11,901.68
260 Workers' Compensation	33,204.73
<b>Total Personnel Services – Employee Benefits</b>	<b>\$2,597,401.22</b>
300 <u>Purchased Professional and Technical Services</u>	
322 Professional Educational Services – Ius	13,795.59
323 Professional Educational Services – Other Educational Agencies	750.00
329 Professional Educational Services – Other	46,039.50
330 Other Professional Services	3,111.74
340 Technical Services	6,378.99
<b>Total Purchased Professional and Technical Services</b>	<b>\$70,075.82</b>
400 <u>Purchased Property Services</u>	
430 Repairs and Maintenance Services	1,371.43
440 Rentals	7,960.06
<b>Total Purchased Property Services</b>	<b>\$9,331.49</b>
500 <u>Other Purchased Services</u>	
510 Student Transportation Services	5,769.64
561 Tuition To Other School Districts Within the State	248,556.78
562 Tuition To Pennsylvania Charter Schools	254,908.94
564 Tuition To Career and Technology Centers	566,065.90
569 Tuition – Other	128,749.94
580 Travel	3,346.34
<b>Total Other Purchased Services</b>	<b>\$1,207,397.54</b>
600 <u>Supplies</u>	
610 General Supplies	214,962.25
620 Energy	1,751.07
640 Books and Periodicals	45,817.60
<b>Total Supplies</b>	<b>\$262,530.92</b>
700 <u>Property</u>	
752 Capital Equipment – Original and Additional	42,575.18
762 Capitalized Equipment - Replacement	1,339.62
<b>Total Property</b>	<b>\$43,914.80</b>
800 <u>Other Objects</u>	
810 Dues and Fees	1,902.00
<b>Total Other Objects</b>	<b>\$1,902.00</b>
<b>Total 1000 Instruction</b>	<b>\$8,312,222.78</b>

LEA : 116195004 Millville Area SD

Printed 12/1/2022 12:03:42 PM

General Fund (10)

1100 Regular Programs – Elementary / Secondary	Elementary	Secondary	Federal	Total
<b>100 Personnel Services – Salaries</b>				
100 Personnel Services – Salaries	1,247,485.94	1,346,857.64	346,699.82	2,941,043.40
<b>Total Personnel Services – Salaries</b>	<b>\$1,247,485.94</b>	<b>\$1,346,857.64</b>	<b>\$346,699.82</b>	<b>\$2,941,043.40</b>
<b>200 Personnel Services – Employee Benefits</b>				
210 Group Insurance – Contracted Provider	291,702.62	220,227.80	82,848.68	594,779.10
220 Social Security Contributions	92,373.57	99,371.14	22,862.33	214,607.04
230 PSERS Retirement Contributions	494,884.88	464,855.70	57,764.88	1,017,505.46
250 Unemployment Compensation	3,128.26	3,439.12	1,103.96	7,671.34
260 Workers' Compensation	10,313.78	10,855.58	2,535.10	23,704.46
<b>Total Personnel Services – Employee Benefits</b>	<b>\$892,403.11</b>	<b>\$798,749.34</b>	<b>\$167,114.95</b>	<b>\$1,858,267.40</b>
<b>300 Purchased Professional and Technical Services</b>				
322 Professional Educational Services – lus			833.97	833.97
340 Technical Services		2,878.99	3,500.00	6,378.99
<b>Total Purchased Professional and Technical Services</b>		<b>\$2,878.99</b>	<b>\$4,333.97</b>	<b>\$7,212.96</b>
<b>400 Purchased Property Services</b>				
430 Repairs and Maintenance Services		761.00	75.00	836.00
440 Rentals	4,053.31	3,906.75		7,960.06
<b>Total Purchased Property Services</b>	<b>\$4,053.31</b>	<b>\$4,667.75</b>	<b>\$75.00</b>	<b>\$8,796.06</b>
<b>500 Other Purchased Services</b>				
510 Student Transportation Services	3,894.50	712.72		4,607.22
561 Tuition To Other School Districts Within the State		170,202.87		170,202.87
562 Tuition To Pennsylvania Charter Schools	100,779.91	100,779.91		201,559.82
569 Tuition – Other	35,560.50	35,560.50		71,121.00
580 Travel		93.60	1,264.36	1,357.96
<b>Total Other Purchased Services</b>	<b>\$140,234.91</b>	<b>\$307,349.60</b>	<b>\$1,264.36</b>	<b>\$448,848.87</b>
<b>600 Supplies</b>				
610 General Supplies	37,957.86	21,762.38	74,523.98	134,244.22
620 Energy			1,751.07	1,751.07
640 Books and Periodicals			45,661.01	45,661.01
<b>Total Supplies</b>	<b>\$37,957.86</b>	<b>\$21,762.38</b>	<b>\$121,936.06</b>	<b>\$181,656.30</b>
<b>700 Property</b>				
752 Capital Equipment – Original and Additional	363.57			363.57
762 Capitalized Equipment - Replacement		442.37		442.37
<b>Total Property</b>	<b>\$363.57</b>	<b>\$442.37</b>		<b>\$805.94</b>
<b>800 Other Objects</b>				
810 Dues and Fees		157.00	307.00	464.00
<b>Total Other Objects</b>		<b>\$157.00</b>	<b>\$307.00</b>	<b>\$464.00</b>
<b>Total 1100 Regular Programs – Elementary / Secondary</b>	<b>\$2,322,498.70</b>	<b>\$2,482,865.07</b>	<b>\$641,731.16</b>	<b>\$5,447,094.93</b>

LEA : 116195004     Millville Area SD

Printed 12/1/2022 12:03:42 PM

General Fund (10)

1110 Regular Programs

	<u>Elementary</u>	<u>Secondary</u>	<u>Federal</u>	<u>Total</u>
<b>100 <u>Personnel Services – Salaries</u></b>				
100 Personnel Services – Salaries	1,247,485.94	1,346,857.64		2,594,343.58
<b>Total Personnel Services – Salaries</b>	<b>\$1,247,485.94</b>	<b>\$1,346,857.64</b>		<b>\$2,594,343.58</b>
<b>200 <u>Personnel Services – Employee Benefits</u></b>				
210 Group Insurance – Contracted Provider	291,702.62	220,227.80		511,930.42
220 Social Security Contributions	92,373.57	99,371.14		191,744.71
230 PSERS Retirement Contributions	494,884.88	464,855.70		959,740.58
250 Unemployment Compensation	3,128.26	3,439.12		6,567.38
260 Workers' Compensation	10,313.78	10,855.58		21,169.36
<b>Total Personnel Services – Employee Benefits</b>	<b>\$892,403.11</b>	<b>\$798,749.34</b>		<b>\$1,691,152.45</b>
<b>300 <u>Purchased Professional and Technical Services</u></b>				
340 Technical Services		2,878.99		2,878.99
<b>Total Purchased Professional and Technical Services</b>		<b>\$2,878.99</b>		<b>\$2,878.99</b>
<b>400 <u>Purchased Property Services</u></b>				
430 Repairs and Maintenance Services		761.00		761.00
440 Rentals	4,053.31	3,906.75		7,960.06
<b>Total Purchased Property Services</b>	<b>\$4,053.31</b>	<b>\$4,667.75</b>		<b>\$8,721.06</b>
<b>500 <u>Other Purchased Services</u></b>				
510 Student Transportation Services	3,894.50	712.72		4,607.22
561 Tuition To Other School Districts Within the State		170,202.87		170,202.87
562 Tuition To Pennsylvania Charter Schools	100,779.91	100,779.91		201,559.82
569 Tuition – Other	35,560.50	35,560.50		71,121.00
580 Travel		93.60		93.60
<b>Total Other Purchased Services</b>	<b>\$140,234.91</b>	<b>\$307,349.60</b>		<b>\$447,584.51</b>
<b>600 <u>Supplies</u></b>				
610 General Supplies	37,957.86	21,762.38		59,720.24
640 Books and Periodicals			5,750.88	5,750.88
<b>Total Supplies</b>	<b>\$37,957.86</b>	<b>\$21,762.38</b>	<b>\$5,750.88</b>	<b>\$65,471.12</b>
<b>700 <u>Property</u></b>				
752 Capital Equipment – Original and Additional	363.57			363.57
762 Capitalized Equipment - Replacement		442.37		442.37
<b>Total Property</b>	<b>\$363.57</b>	<b>\$442.37</b>		<b>\$805.94</b>
<b>800 <u>Other Objects</u></b>				
810 Dues and Fees		157.00		157.00
<b>Total Other Objects</b>		<b>\$157.00</b>		<b>\$157.00</b>
<b>Total 1110 Regular Programs</b>	<b>\$2,322,498.70</b>	<b>\$2,482,865.07</b>	<b>\$5,750.88</b>	<b>\$4,811,114.65</b>

LEA : 116195004     Millville Area SD

Printed 12/1/2022 12:03:42 PM

General Fund (10)

1190 Federally-Funded Regular Programs

	<u>Elementary</u>	<u>Secondary</u>	<u>Federal</u>	<u>Total</u>
<b>100 <u>Personnel Services – Salaries</u></b>				
100 Personnel Services – Salaries			346,699.82	346,699.82
<b>Total Personnel Services – Salaries</b>			<b>\$346,699.82</b>	<b>\$346,699.82</b>
<b>200 <u>Personnel Services – Employee Benefits</u></b>				
210 Group Insurance – Contracted Provider			82,848.68	82,848.68
220 Social Security Contributions			22,862.33	22,862.33
230 PSERS Retirement Contributions			57,764.88	57,764.88
250 Unemployment Compensation			1,103.96	1,103.96
260 Workers' Compensation			2,535.10	2,535.10
<b>Total Personnel Services – Employee Benefits</b>			<b>\$167,114.95</b>	<b>\$167,114.95</b>
<b>300 <u>Purchased Professional and Technical Services</u></b>				
322 Professional Educational Services – lus			833.97	833.97
340 Technical Services			3,500.00	3,500.00
<b>Total Purchased Professional and Technical Services</b>			<b>\$4,333.97</b>	<b>\$4,333.97</b>
<b>400 <u>Purchased Property Services</u></b>				
430 Repairs and Maintenance Services			75.00	75.00
<b>Total Purchased Property Services</b>			<b>\$75.00</b>	<b>\$75.00</b>
<b>500 <u>Other Purchased Services</u></b>				
580 Travel			1,264.36	1,264.36
<b>Total Other Purchased Services</b>			<b>\$1,264.36</b>	<b>\$1,264.36</b>
<b>600 <u>Supplies</u></b>				
610 General Supplies			74,523.98	74,523.98
620 Energy			1,751.07	1,751.07
640 Books and Periodicals			39,910.13	39,910.13
<b>Total Supplies</b>			<b>\$116,185.18</b>	<b>\$116,185.18</b>
<b>800 <u>Other Objects</u></b>				
810 Dues and Fees			307.00	307.00
<b>Total Other Objects</b>			<b>\$307.00</b>	<b>\$307.00</b>
<b>Total 1190 Federally-Funded Regular Programs</b>			<b>\$635,980.28</b>	<b>\$635,980.28</b>

LEA : 116195004     Millville Area SD

Printed 12/1/2022 12:03:42 PM

<b>General Fund (10)</b>				
<b>1200 Special Programs – Elementary / Secondary</b>	<b><u>Elementary</u></b>	<b><u>Secondary</u></b>	<b><u>Federal</u></b>	<b><u>Total</u></b>
<b>100 <u>Personnel Services – Salaries</u></b>				
100 Personnel Services – Salaries	588,245.88	247,503.53	123,514.50	959,263.91
<b>Total Personnel Services – Salaries</b>	<b>\$588,245.88</b>	<b>\$247,503.53</b>	<b>\$123,514.50</b>	<b>\$959,263.91</b>
<b>200 <u>Personnel Services – Employee Benefits</u></b>				
210 Group Insurance – Contracted Provider	121,282.33	55,448.13	30,069.00	206,799.46
220 Social Security Contributions	43,425.73	18,434.18	8,842.00	70,701.91
230 PSERS Retirement Contributions	205,825.03	86,330.09	43,156.00	335,311.12
250 Unemployment Compensation	2,227.82	981.43	261.00	3,470.25
260 Workers' Compensation	4,741.18	1,994.68	996.00	7,731.86
<b>Total Personnel Services – Employee Benefits</b>	<b>\$377,502.09</b>	<b>\$163,188.51</b>	<b>\$83,324.00</b>	<b>\$624,014.60</b>
<b>300 <u>Purchased Professional and Technical Services</u></b>				
322 Professional Educational Services – lus	12,111.62			12,111.62
329 Professional Educational Services – Other	37,347.50			37,347.50
330 Other Professional Services			3,111.74	3,111.74
<b>Total Purchased Professional and Technical Services</b>	<b>\$49,459.12</b>		<b>\$3,111.74</b>	<b>\$52,570.86</b>
<b>500 <u>Other Purchased Services</u></b>				
510 Student Transportation Services		453.62		453.62
561 Tuition To Other School Districts Within the State	39,091.50	39,091.50		78,183.00
562 Tuition To Pennsylvania Charter Schools	26,674.56	26,674.56		53,349.12
569 Tuition – Other	28,814.47	28,814.47		57,628.94
580 Travel	1,523.78	130.00		1,653.78
<b>Total Other Purchased Services</b>	<b>\$96,104.31</b>	<b>\$95,164.15</b>		<b>\$191,268.46</b>
<b>600 <u>Supplies</u></b>				
610 General Supplies	1,305.63	4,801.17		6,106.80
640 Books and Periodicals		156.59		156.59
<b>Total Supplies</b>	<b>\$1,305.63</b>	<b>\$4,957.76</b>		<b>\$6,263.39</b>
<b>700 <u>Property</u></b>				
752 Capital Equipment – Original and Additional	1,288.00			1,288.00
762 Capitalized Equipment - Replacement	897.25			897.25
<b>Total Property</b>	<b>\$2,185.25</b>			<b>\$2,185.25</b>
<b>800 <u>Other Objects</u></b>				
810 Dues and Fees	298.00	1,140.00		1,438.00
<b>Total Other Objects</b>	<b>\$298.00</b>	<b>\$1,140.00</b>		<b>\$1,438.00</b>
<b>Total 1200 Special Programs – Elementary / Secondary</b>	<b>\$1,115,100.28</b>	<b>\$511,953.95</b>	<b>\$209,950.24</b>	<b>\$1,837,004.47</b>

LEA : 116195004 Millville Area SD

Printed 12/1/2022 12:03:42 PM

General Fund (10)

1210 Life Skills Support

	Elementary	Secondary	Federal	Total
<b>100 Personnel Services – Salaries</b>				
100 Personnel Services – Salaries	82,747.67	102,900.37		185,648.04
<b>Total Personnel Services – Salaries</b>	<b>\$82,747.67</b>	<b>\$102,900.37</b>		<b>\$185,648.04</b>
<b>200 Personnel Services – Employee Benefits</b>				
210 Group Insurance – Contracted Provider	22,747.57	13,744.67		36,492.24
220 Social Security Contributions	6,090.33	7,578.05		13,668.38
230 PSERS Retirement Contributions	28,988.25	36,029.10		65,017.35
250 Unemployment Compensation	252.58	420.80		673.38
260 Workers' Compensation	667.04	829.42		1,496.46
<b>Total Personnel Services – Employee Benefits</b>	<b>\$58,745.77</b>	<b>\$58,602.04</b>		<b>\$117,347.81</b>
<b>300 Purchased Professional and Technical Services</b>				
330 Other Professional Services			3,111.74	3,111.74
<b>Total Purchased Professional and Technical Services</b>			<b>\$3,111.74</b>	<b>\$3,111.74</b>
<b>500 Other Purchased Services</b>				
510 Student Transportation Services		263.62		263.62
580 Travel	70.00			70.00
<b>Total Other Purchased Services</b>	<b>\$70.00</b>	<b>\$263.62</b>		<b>\$333.62</b>
<b>600 Supplies</b>				
610 General Supplies	869.09	3,851.71		4,720.80
<b>Total Supplies</b>	<b>\$869.09</b>	<b>\$3,851.71</b>		<b>\$4,720.80</b>
<b>Total 1210 Life Skills Support</b>	<b>\$142,432.53</b>	<b>\$165,617.74</b>	<b>\$3,111.74</b>	<b>\$311,162.01</b>

LEA : 116195004     Millville Area SD

Printed 12/1/2022 12:03:42 PM

General Fund (10)

1220 Sensory Support	<u>Elementary</u>	<u>Secondary</u>	<u>Federal</u>	<u>Total</u>
<b>100 <u>Personnel Services – Salaries</u></b>				
100 Personnel Services – Salaries	39,134.78	35,242.00		74,376.78
<b>Total Personnel Services – Salaries</b>	<b>\$39,134.78</b>	<b>\$35,242.00</b>		<b>\$74,376.78</b>
<b>200 <u>Personnel Services – Employee Benefits</u></b>				
210 Group Insurance – Contracted Provider	11,375.31	11,375.72		22,751.03
220 Social Security Contributions	2,857.88	2,565.13		5,423.01
230 PSERS Retirement Contributions	14,111.96	12,313.62		26,425.58
250 Unemployment Compensation	63.33	63.33		126.66
260 Workers' Compensation	315.42	284.05		599.47
<b>Total Personnel Services – Employee Benefits</b>	<b>\$28,723.90</b>	<b>\$26,601.85</b>		<b>\$55,325.75</b>
<b>500 <u>Other Purchased Services</u></b>				
580 Travel	227.77			227.77
<b>Total Other Purchased Services</b>	<b>\$227.77</b>			<b>\$227.77</b>
<b>800 <u>Other Objects</u></b>				
810 Dues and Fees	298.00			298.00
<b>Total Other Objects</b>	<b>\$298.00</b>			<b>\$298.00</b>
<b>Total 1220 Sensory Support</b>	<b>\$68,384.45</b>	<b>\$61,843.85</b>		<b>\$130,228.30</b>



LEA : 116195004 Millville Area SD

Printed 12/1/2022 12:03:42 PM

General Fund (10)

1230 Emotional Support

	<u>Elementary</u>	<u>Secondary</u>	<u>Federal</u>	<u>Total</u>
<b>100 <u>Personnel Services – Salaries</u></b>				
100 Personnel Services – Salaries	152,386.36			152,386.36
<b>Total Personnel Services – Salaries</b>	<b>\$152,386.36</b>			<b>\$152,386.36</b>
<b>200 <u>Personnel Services – Employee Benefits</u></b>				
210 Group Insurance – Contracted Provider	45,488.19	919.74		46,407.93
220 Social Security Contributions	11,159.02			11,159.02
230 PSERS Retirement Contributions	54,242.43			54,242.43
250 Unemployment Compensation	354.76			354.76
260 Workers' Compensation	1,228.11	(0.01)		1,228.10
<b>Total Personnel Services – Employee Benefits</b>	<b>\$112,472.51</b>	<b>\$919.73</b>		<b>\$113,392.24</b>
<b>500 <u>Other Purchased Services</u></b>				
580 Travel	16.00			16.00
<b>Total Other Purchased Services</b>	<b>\$16.00</b>			<b>\$16.00</b>
<b>600 <u>Supplies</u></b>				
610 General Supplies	191.33	465.78		657.11
<b>Total Supplies</b>	<b>\$191.33</b>	<b>\$465.78</b>		<b>\$657.11</b>
<b>700 <u>Property</u></b>				
762 Capitalized Equipment - Replacement	897.25			897.25
<b>Total Property</b>	<b>\$897.25</b>			<b>\$897.25</b>
<b>Total 1230 Emotional Support</b>	<b>\$265,963.45</b>	<b>\$1,385.51</b>		<b>\$267,348.96</b>

LEA : 116195004     Millville Area SD

Printed 12/1/2022 12:03:42 PM

General Fund (10)

1240 Academic Support

	Elementary	Secondary	Federal	Total
<b>100 <u>Personnel Services – Salaries</u></b>				
100 Personnel Services – Salaries	313,977.07	109,361.16	123,514.50	546,852.73
<b>Total Personnel Services – Salaries</b>	<b>\$313,977.07</b>	<b>\$109,361.16</b>	<b>\$123,514.50</b>	<b>\$546,852.73</b>
<b>200 <u>Personnel Services – Employee Benefits</u></b>				
210 Group Insurance – Contracted Provider	41,671.26	29,408.00	30,069.00	101,148.26
220 Social Security Contributions	23,318.50	8,291.00	8,842.00	40,451.50
230 PSERS Retirement Contributions	108,482.39	37,987.37	43,156.00	189,625.76
250 Unemployment Compensation	1,557.15	497.30	261.00	2,315.45
260 Workers' Compensation	2,530.61	881.22	996.00	4,407.83
<b>Total Personnel Services – Employee Benefits</b>	<b>\$177,559.91</b>	<b>\$77,064.89</b>	<b>\$83,324.00</b>	<b>\$337,948.80</b>
<b>500 <u>Other Purchased Services</u></b>				
510 Student Transportation Services		190.00		190.00
561 Tuition To Other School Districts Within the State	39,091.50	39,091.50		78,183.00
562 Tuition To Pennsylvania Charter Schools	26,674.56	26,674.56		53,349.12
580 Travel	1,210.01	130.00		1,340.01
<b>Total Other Purchased Services</b>	<b>\$66,976.07</b>	<b>\$66,086.06</b>		<b>\$133,062.13</b>
<b>600 <u>Supplies</u></b>				
610 General Supplies	245.21	483.68		728.89
640 Books and Periodicals		156.59		156.59
<b>Total Supplies</b>	<b>\$245.21</b>	<b>\$640.27</b>		<b>\$885.48</b>
<b>700 <u>Property</u></b>				
752 Capital Equipment – Original and Additional	1,288.00			1,288.00
<b>Total Property</b>	<b>\$1,288.00</b>			<b>\$1,288.00</b>
<b>800 <u>Other Objects</u></b>				
810 Dues and Fees		1,140.00		1,140.00
<b>Total Other Objects</b>		<b>\$1,140.00</b>		<b>\$1,140.00</b>
<b>Total 1240 Academic Support</b>	<b>\$560,046.26</b>	<b>\$254,292.38</b>	<b>\$206,838.50</b>	<b>\$1,021,177.14</b>

LEA : 116195004     Millville Area SD

Printed 12/1/2022 12:03:42 PM

General Fund (10)

1241 Learning Support – Public	Elementary	Secondary	Federal	Total
<b>100 Personnel Services – Salaries</b>				
100 Personnel Services – Salaries	291,773.00	98,672.10	123,514.50	513,959.60
<b>Total Personnel Services – Salaries</b>	<b>\$291,773.00</b>	<b>\$98,672.10</b>	<b>\$123,514.50</b>	<b>\$513,959.60</b>
<b>200 Personnel Services – Employee Benefits</b>				
210 Group Insurance – Contracted Provider	41,654.05	29,356.01	30,069.00	101,079.06
220 Social Security Contributions	21,619.41	7,473.05	8,842.00	37,934.46
230 PSERS Retirement Contributions	100,690.68	34,371.32	43,156.00	178,218.00
250 Unemployment Compensation	1,514.27	475.22	261.00	2,250.49
260 Workers' Compensation	2,351.59	795.02	996.00	4,142.61
<b>Total Personnel Services – Employee Benefits</b>	<b>\$167,830.00</b>	<b>\$72,470.62</b>	<b>\$83,324.00</b>	<b>\$323,624.62</b>
<b>500 Other Purchased Services</b>				
510 Student Transportation Services		190.00		190.00
561 Tuition To Other School Districts Within the State	39,091.50	39,091.50		78,183.00
562 Tuition To Pennsylvania Charter Schools	26,674.56	26,674.56		53,349.12
<b>Total Other Purchased Services</b>	<b>\$65,766.06</b>	<b>\$65,956.06</b>		<b>\$131,722.12</b>
<b>600 Supplies</b>				
610 General Supplies	245.21	483.68		728.89
640 Books and Periodicals		156.59		156.59
<b>Total Supplies</b>	<b>\$245.21</b>	<b>\$640.27</b>		<b>\$885.48</b>
<b>700 Property</b>				
752 Capital Equipment – Original and Additional	1,288.00			1,288.00
<b>Total Property</b>	<b>\$1,288.00</b>			<b>\$1,288.00</b>
<b>Total 1241 Learning Support – Public</b>	<b>\$526,902.27</b>	<b>\$237,739.05</b>	<b>\$206,838.50</b>	<b>\$971,479.82</b>

LEA : 116195004 Millville Area SD

Printed 12/1/2022 12:03:42 PM

General Fund (10)

1243 Gifted Support	Elementary	Secondary	Federal	Total
<b>100 Personnel Services – Salaries</b>				
100 Personnel Services – Salaries	22,204.07	10,689.06		32,893.13
<b>Total Personnel Services – Salaries</b>	<b>\$22,204.07</b>	<b>\$10,689.06</b>		<b>\$32,893.13</b>
<b>200 Personnel Services – Employee Benefits</b>				
210 Group Insurance – Contracted Provider	17.21	51.99		69.20
220 Social Security Contributions	1,699.09	817.95		2,517.04
230 PSERS Retirement Contributions	7,791.71	3,616.05		11,407.76
250 Unemployment Compensation	42.88	22.08		64.96
260 Workers' Compensation	179.02	86.20		265.22
<b>Total Personnel Services – Employee Benefits</b>	<b>\$9,729.91</b>	<b>\$4,594.27</b>		<b>\$14,324.18</b>
<b>500 Other Purchased Services</b>				
580 Travel	1,210.01	130.00		1,340.01
<b>Total Other Purchased Services</b>	<b>\$1,210.01</b>	<b>\$130.00</b>		<b>\$1,340.01</b>
<b>800 Other Objects</b>				
810 Dues and Fees		1,140.00		1,140.00
<b>Total Other Objects</b>		<b>\$1,140.00</b>		<b>\$1,140.00</b>
<b>Total 1243 Gifted Support</b>	<b>\$33,143.99</b>	<b>\$16,553.33</b>		<b>\$49,697.32</b>

LEA : 116195004     Millville Area SD

Printed 12/1/2022 12:03:42 PM

General Fund (10)

1260 Physical Support

	<u>Elementary</u>	<u>Secondary</u>	<u>Federal</u>	<u>Total</u>
300 <u>Purchased Professional and Technical Services</u>				
329 Professional Educational Services – Other	37,347.50			37,347.50
<b>Total Purchased Professional and Technical Services</b>	<b>\$37,347.50</b>			<b>\$37,347.50</b>
<b>Total 1260 Physical Support</b>	<b>\$37,347.50</b>			<b>\$37,347.50</b>

LEA : 116195004     Millville Area SD

Printed 12/1/2022 12:03:42 PM

General Fund (10)

1290 Special Programs - Other Support	<u>Elementary</u>	<u>Secondary</u>	<u>Federal</u>	<u>Total</u>
300 <u>Purchased Professional and Technical Services</u>				
322 Professional Educational Services – lus	12,111.62			12,111.62
Total Purchased Professional and Technical Services	\$12,111.62			\$12,111.62
500 <u>Other Purchased Services</u>				
569 Tuition – Other	28,814.47	28,814.47		57,628.94
Total Other Purchased Services	\$28,814.47	\$28,814.47		\$57,628.94
Total 1290 Special Programs - Other Support	\$40,926.09	\$28,814.47		\$69,740.56

LEA : 116195004      Millville Area SD

Printed 12/1/2022 12:03:42 PM

General Fund (10)

1300 Vocational Education	Elementary	Secondary	Federal	Total
100 <u>Personnel Services – Salaries</u>				
100 Personnel Services – Salaries		190,122.27		190,122.27
<b>Total Personnel Services – Salaries</b>		<b>\$190,122.27</b>		<b>\$190,122.27</b>
200 <u>Personnel Services – Employee Benefits</u>				
210 Group Insurance – Contracted Provider		12,685.45		12,685.45
220 Social Security Contributions		14,377.19		14,377.19
230 PSERS Retirement Contributions		64,681.97		64,681.97
250 Unemployment Compensation		546.02		546.02
260 Workers' Compensation		1,532.52		1,532.52
<b>Total Personnel Services – Employee Benefits</b>		<b>\$93,823.15</b>		<b>\$93,823.15</b>
400 <u>Purchased Property Services</u>				
430 Repairs and Maintenance Services		535.43		535.43
<b>Total Purchased Property Services</b>		<b>\$535.43</b>		<b>\$535.43</b>
500 <u>Other Purchased Services</u>				
510 Student Transportation Services		708.80		708.80
564 Tuition To Career and Technology Centers		566,065.90		566,065.90
580 Travel		334.60		334.60
<b>Total Other Purchased Services</b>		<b>\$567,109.30</b>		<b>\$567,109.30</b>
600 <u>Supplies</u>				
610 General Supplies		53,393.92		53,393.92
<b>Total Supplies</b>		<b>\$53,393.92</b>		<b>\$53,393.92</b>
700 <u>Property</u>				
752 Capital Equipment – Original and Additional		40,923.61		40,923.61
<b>Total Property</b>		<b>\$40,923.61</b>		<b>\$40,923.61</b>
<b>Total 1300 Vocational Education</b>		<b>\$945,907.68</b>		<b>\$945,907.68</b>

LEA : 116195004 Millville Area SD

Printed 12/1/2022 12:03:42 PM

General Fund (10)

1400 Other Instructional Programs – Elementary / Secondary	<u>Elementary</u>	<u>Secondary</u>	<u>Federal</u>	<u>Total</u>
<b>100 <u>Personnel Services – Salaries</u></b>				
100 Personnel Services – Salaries		6,347.73	22,891.68	29,239.41
<b>Total Personnel Services – Salaries</b>		<b>\$6,347.73</b>	<b>\$22,891.68</b>	<b>\$29,239.41</b>
<b>200 <u>Personnel Services – Employee Benefits</u></b>				
210 Group Insurance – Contracted Provider		1,578.00	7,019.86	8,597.86
220 Social Security Contributions		461.33	1,727.90	2,189.23
230 PSERS Retirement Contributions		2,217.89	7,841.13	10,059.02
250 Unemployment Compensation		12.99	201.08	214.07
260 Workers' Compensation		51.24	184.65	235.89
<b>Total Personnel Services – Employee Benefits</b>		<b>\$4,321.45</b>	<b>\$16,974.62</b>	<b>\$21,296.07</b>
<b>300 <u>Purchased Professional and Technical Services</u></b>				
322 Professional Educational Services – lus			850.00	850.00
323 Professional Educational Services – Other Educational Agencies			750.00	750.00
329 Professional Educational Services – Other		8,692.00		8,692.00
<b>Total Purchased Professional and Technical Services</b>		<b>\$8,692.00</b>	<b>\$1,600.00</b>	<b>\$10,292.00</b>
<b>500 <u>Other Purchased Services</u></b>				
561 Tuition To Other School Districts Within the State		170.91		170.91
<b>Total Other Purchased Services</b>		<b>\$170.91</b>		<b>\$170.91</b>
<b>600 <u>Supplies</u></b>				
610 General Supplies	8,282.61	8,282.60	4,652.10	21,217.31
<b>Total Supplies</b>	<b>\$8,282.61</b>	<b>\$8,282.60</b>	<b>\$4,652.10</b>	<b>\$21,217.31</b>
<b>Total 1400 Other Instructional Programs – Elementary / Secondary</b>	<b>\$8,282.61</b>	<b>\$27,814.69</b>	<b>\$46,118.40</b>	<b>\$82,215.70</b>



LEA : 116195004 Millville Area SD

Printed 12/1/2022 12:03:42 PM

General Fund (10)

1410 Drivers' Education

	<u>Elementary</u>	<u>Secondary</u>	<u>Federal</u>	<u>Total</u>
<b>100 <u>Personnel Services – Salaries</u></b>				
100 Personnel Services – Salaries		6,347.73		6,347.73
<b>Total Personnel Services – Salaries</b>		<b>\$6,347.73</b>		<b>\$6,347.73</b>
<b>200 <u>Personnel Services – Employee Benefits</u></b>				
210 Group Insurance – Contracted Provider		1,578.00		1,578.00
220 Social Security Contributions		461.33		461.33
230 PSERS Retirement Contributions		2,217.89		2,217.89
250 Unemployment Compensation		12.99		12.99
260 Workers' Compensation		51.24		51.24
<b>Total Personnel Services – Employee Benefits</b>		<b>\$4,321.45</b>		<b>\$4,321.45</b>
<b>Total 1410 Drivers' Education</b>		<b>\$10,669.18</b>		<b>\$10,669.18</b>

LEA : 116195004     Millville Area SD

Printed 12/1/2022 12:03:42 PM

General Fund (10)

1440 Alternative Regular Education Programs	<u>Elementary</u>	<u>Secondary</u>	<u>Federal</u>	<u>Total</u>
300 <u>Purchased Professional and Technical Services</u>				
329 Professional Educational Services – Other		8,692.00		8,692.00
Total Purchased Professional and Technical Services		\$8,692.00		\$8,692.00
500 <u>Other Purchased Services</u>				
561 Tuition To Other School Districts Within the State		170.91		170.91
Total Other Purchased Services		\$170.91		\$170.91
Total 1440 Alternative Regular Education Programs		\$8,862.91		\$8,862.91

LEA : 116195004     Millville Area SD

Printed 12/1/2022 12:03:42 PM

General Fund (10)

1441 Adjudicated / Court-Placed Programs	<u>Elementary</u>	<u>Secondary</u>	<u>Federal</u>	<u>Total</u>
300 <u>Purchased Professional and Technical Services</u>				
329 Professional Educational Services – Other		8,692.00		8,692.00
Total Purchased Professional and Technical Services		\$8,692.00		\$8,692.00
500 <u>Other Purchased Services</u>				
561 Tuition To Other School Districts Within the State		170.91		170.91
Total Other Purchased Services		\$170.91		\$170.91
Total 1441 Adjudicated / Court-Placed Programs		\$8,862.91		\$8,862.91

LEA : 116195004 Millville Area SD

Printed 12/1/2022 12:03:42 PM

General Fund (10)

1490 Additional Other Instructional Programs	<u>Elementary</u>	<u>Secondary</u>	<u>Federal</u>	<u>Total</u>
100 <u>Personnel Services – Salaries</u>				
100 Personnel Services – Salaries			22,891.68	22,891.68
Total Personnel Services – Salaries			\$22,891.68	\$22,891.68
200 <u>Personnel Services – Employee Benefits</u>				
210 Group Insurance – Contracted Provider			7,019.86	7,019.86
220 Social Security Contributions			1,727.90	1,727.90
230 PSERS Retirement Contributions			7,841.13	7,841.13
250 Unemployment Compensation			201.08	201.08
260 Workers' Compensation			184.65	184.65
Total Personnel Services – Employee Benefits			\$16,974.62	\$16,974.62
300 <u>Purchased Professional and Technical Services</u>				
322 Professional Educational Services – Ius			850.00	850.00
323 Professional Educational Services – Other Educational Agencies			750.00	750.00
Total Purchased Professional and Technical Services			\$1,600.00	\$1,600.00
600 <u>Supplies</u>				
610 General Supplies	8,282.61	8,282.60	4,652.10	21,217.31
Total Supplies	\$8,282.61	\$8,282.60	\$4,652.10	\$21,217.31
Total 1490 Additional Other Instructional Programs	\$8,282.61	\$8,282.60	\$46,118.40	\$62,683.61

LEA : 116195004     Millville Area SD

Printed 12/1/2022 12:03:45 PM

General Fund (10)

2000 Support Services

Total

100	<u>Personnel Services – Salaries</u>	
100	Personnel Services – Salaries	1,783,270.67
Total Personnel Services – Salaries		\$1,783,270.67
200	<u>Personnel Services – Employee Benefits</u>	
210	Group Insurance – Contracted Provider	464,185.71
220	Social Security Contributions	130,041.42
230	PSERS Retirement Contributions	604,451.44
240	Tuition Reimbursement	15,865.00
250	Unemployment Compensation	4,824.19
260	Workers' Compensation	14,187.65
291	Other Retirement Plans	17,223.29
299	All Other Employee Benefits	14,449.05
Total Personnel Services – Employee Benefits		\$1,265,227.75
300	<u>Purchased Professional and Technical Services</u>	
322	Professional Educational Services – Ius	(475.00)
330	Other Professional Services	119,402.16
340	Technical Services	44,619.70
350	Security / Safety Services	93,146.32
Total Purchased Professional and Technical Services		\$256,693.18
400	<u>Purchased Property Services</u>	
410	Cleaning Services	6,613.01
420	Utility Services	207,441.20
430	Repairs and Maintenance Services	18,136.59
440	Rentals	20,548.26
Total Purchased Property Services		\$252,739.06
500	<u>Other Purchased Services</u>	
510	Student Transportation Services	805.60
513	Contracted Carriers	689,899.47
520	Insurance – General	2,331.00
521	Fire Insurance	61,184.00
530	Communications	255,041.01
549	Other Advertising/Public Relations	7,688.99
580	Travel	2,811.06
Total Other Purchased Services		\$1,019,761.13
600	<u>Supplies</u>	
610	General Supplies	253,364.52
620	Energy	8,139.79
640	Books and Periodicals	4,356.47
Total Supplies		\$265,860.78
700	<u>Property</u>	
752	Capital Equipment – Original and Additional	123,482.07
758	Capitalized Technology Software - Original	27,080.00
762	Capitalized Equipment - Replacement	28,796.14

LEA : 116195004     Millville Area SD

Printed 12/1/2022 12:03:45 PM

General Fund (10)	
2000 Support Services	<u>Total</u>
700 <u>Property</u>	
768 Capitalized Technology Software - Replacement	6,993.00
Total Property	\$186,351.21
800 <u>Other Objects</u>	
810 Dues and Fees	94,406.26
890 Miscellaneous Expenditures	3,017.75
Total Other Objects	\$97,424.01
Total 2000 Support Services	\$5,127,327.79

LEA : 116195004      Millville Area SD

Printed 12/1/2022 12:03:45 PM

General Fund (10)

2100 Support Services – Students	Elementary	Secondary	Federal	Total
100 <u>Personnel Services – Salaries</u>				
100 Personnel Services – Salaries	245,828.10	62,332.26		383,640.54
<b>Total Personnel Services – Salaries</b>	<b>\$245,828.10</b>	<b>\$62,332.26</b>		<b>\$383,640.54</b>
200 <u>Personnel Services – Employee Benefits</u>				
210 Group Insurance – Contracted Provider	49,709.58	709.06		73,156.18
220 Social Security Contributions	18,025.48	4,768.86		28,186.57
230 PSERS Retirement Contributions	84,665.34	21,080.14		132,133.00
250 Unemployment Compensation	490.09	130.02		750.10
260 Workers' Compensation	1,968.45	502.32		3,079.21
291 Other Retirement Plans	5,468.87			5,468.87
<b>Total Personnel Services – Employee Benefits</b>	<b>\$160,327.81</b>	<b>\$27,190.40</b>		<b>\$242,773.93</b>
300 <u>Purchased Professional and Technical Services</u>				
322 Professional Educational Services – Ius	(475.00)			(475.00)
330 Other Professional Services	11,231.25			34,079.25
<b>Total Purchased Professional and Technical Services</b>	<b>\$10,756.25</b>			<b>\$33,604.25</b>
400 <u>Purchased Property Services</u>				
440 Rentals	5,774.38			5,774.38
<b>Total Purchased Property Services</b>	<b>\$5,774.38</b>			<b>\$5,774.38</b>
500 <u>Other Purchased Services</u>				
510 Student Transportation Services		805.60		805.60
530 Communications	1,050.00	523.94		1,573.94
580 Travel	333.25	235.00		1,334.54
<b>Total Other Purchased Services</b>	<b>\$1,383.25</b>	<b>\$1,564.54</b>		<b>\$3,714.08</b>
600 <u>Supplies</u>				
610 General Supplies	230.88	1,913.85		2,342.16
<b>Total Supplies</b>	<b>\$230.88</b>	<b>\$1,913.85</b>		<b>\$2,342.16</b>
700 <u>Property</u>				
752 Capital Equipment – Original and Additional	41.12			41.12
<b>Total Property</b>	<b>\$41.12</b>			<b>\$41.12</b>
800 <u>Other Objects</u>				
810 Dues and Fees	260.00			260.00
<b>Total Other Objects</b>	<b>\$260.00</b>			<b>\$260.00</b>
<b>Total 2100 Support Services – Students</b>	<b>\$424,601.79</b>	<b>\$93,001.05</b>		<b>\$672,150.46</b>

LEA : 116195004 Millville Area SD

Printed 12/1/2022 12:03:45 PM

General Fund (10)

2110 Supervision of Student Services	Elementary	Secondary	Federal	Total
100 <u>Personnel Services – Salaries</u>				
100 Personnel Services – Salaries	112,631.65			112,631.65
Total Personnel Services – Salaries	\$112,631.65			\$112,631.65
200 <u>Personnel Services – Employee Benefits</u>				
210 Group Insurance – Contracted Provider	27,765.30			27,765.30
220 Social Security Contributions	8,049.60			8,049.60
230 PSERS Retirement Contributions	38,785.13			38,785.13
250 Unemployment Compensation	230.09			230.09
260 Workers' Compensation	894.78			894.78
291 Other Retirement Plans	2,643.80			2,643.80
Total Personnel Services – Employee Benefits	\$78,368.70			\$78,368.70
300 <u>Purchased Professional and Technical Services</u>				
322 Professional Educational Services – Ius	(475.00)			(475.00)
Total Purchased Professional and Technical Services	(\$475.00)			(\$475.00)
400 <u>Purchased Property Services</u>				
440 Rentals	5,774.38			5,774.38
Total Purchased Property Services	\$5,774.38			\$5,774.38
500 <u>Other Purchased Services</u>				
530 Communications	550.00			550.00
580 Travel	333.25			333.25
Total Other Purchased Services	\$883.25			\$883.25
600 <u>Supplies</u>				
610 General Supplies	105.88			105.88
Total Supplies	\$105.88			\$105.88
700 <u>Property</u>				
752 Capital Equipment – Original and Additional	41.12			41.12
Total Property	\$41.12			\$41.12
800 <u>Other Objects</u>				
810 Dues and Fees	161.00			161.00
Total Other Objects	\$161.00			\$161.00
Total 2110 Supervision of Student Services	\$197,490.98			\$197,490.98



LEA : 116195004 Millville Area SD

Printed 12/1/2022 12:03:45 PM

General Fund (10)

2111 Supervision of Student Services – Head of Component	Elementary	Secondary	Federal	Total
<b>100 <u>Personnel Services – Salaries</u></b>				
100 Personnel Services – Salaries	112,631.65			112,631.65
<b>Total Personnel Services – Salaries</b>	<b>\$112,631.65</b>			<b>\$112,631.65</b>
<b>200 <u>Personnel Services – Employee Benefits</u></b>				
210 Group Insurance – Contracted Provider	27,765.30			27,765.30
220 Social Security Contributions	8,049.60			8,049.60
230 PSERS Retirement Contributions	38,785.13			38,785.13
250 Unemployment Compensation	230.09			230.09
260 Workers' Compensation	894.78			894.78
291 Other Retirement Plans	2,643.80			2,643.80
<b>Total Personnel Services – Employee Benefits</b>	<b>\$78,368.70</b>			<b>\$78,368.70</b>
<b>300 <u>Purchased Professional and Technical Services</u></b>				
322 Professional Educational Services – Ius	(475.00)			(475.00)
<b>Total Purchased Professional and Technical Services</b>	<b>(\$475.00)</b>			<b>(\$475.00)</b>
<b>400 <u>Purchased Property Services</u></b>				
440 Rentals	5,774.38			5,774.38
<b>Total Purchased Property Services</b>	<b>\$5,774.38</b>			<b>\$5,774.38</b>
<b>500 <u>Other Purchased Services</u></b>				
530 Communications	550.00			550.00
580 Travel	333.25			333.25
<b>Total Other Purchased Services</b>	<b>\$883.25</b>			<b>\$883.25</b>
<b>600 <u>Supplies</u></b>				
610 General Supplies	105.88			105.88
<b>Total Supplies</b>	<b>\$105.88</b>			<b>\$105.88</b>
<b>700 <u>Property</u></b>				
752 Capital Equipment – Original and Additional	41.12			41.12
<b>Total Property</b>	<b>\$41.12</b>			<b>\$41.12</b>
<b>800 <u>Other Objects</u></b>				
810 Dues and Fees	161.00			161.00
<b>Total Other Objects</b>	<b>\$161.00</b>			<b>\$161.00</b>
<b>Total 2111 Supervision of Student Services – Head of Component</b>	<b>\$197,490.98</b>			<b>\$197,490.98</b>

LEA : 116195004     Millville Area SD

Printed 12/1/2022 12:03:45 PM

General Fund (10)

2120 Guidance Services

	<u>Elementary</u>	<u>Secondary</u>	<u>Federal</u>	<u>Total</u>
<b>100 <u>Personnel Services – Salaries</u></b>				
100 Personnel Services – Salaries	63,262.41	62,332.26		125,594.67
<b>Total Personnel Services – Salaries</b>	<b>\$63,262.41</b>	<b>\$62,332.26</b>		<b>\$125,594.67</b>
<b>200 <u>Personnel Services – Employee Benefits</u></b>				
210 Group Insurance – Contracted Provider	21,057.76	709.06		21,766.82
220 Social Security Contributions	4,627.10	4,768.86		9,395.96
230 PSERS Retirement Contributions	22,103.84	21,080.14		43,183.98
250 Unemployment Compensation	129.99	130.02		260.01
260 Workers' Compensation	509.87	502.32		1,012.19
<b>Total Personnel Services – Employee Benefits</b>	<b>\$48,428.56</b>	<b>\$27,190.40</b>		<b>\$75,618.96</b>
<b>500 <u>Other Purchased Services</u></b>				
510 Student Transportation Services		805.60		805.60
530 Communications		523.94		523.94
580 Travel		235.00		235.00
<b>Total Other Purchased Services</b>		<b>\$1,564.54</b>		<b>\$1,564.54</b>
<b>600 <u>Supplies</u></b>				
610 General Supplies		1,913.85		1,913.85
<b>Total Supplies</b>		<b>\$1,913.85</b>		<b>\$1,913.85</b>
<b>Total 2120 Guidance Services</b>	<b>\$111,690.97</b>	<b>\$93,001.05</b>		<b>\$204,692.02</b>

LEA : 116195004     Millville Area SD

Printed 12/1/2022 12:03:45 PM

General Fund (10)				
2140 Psychological Services	<u>Elementary</u>	<u>Secondary</u>	<u>Federal</u>	<u>Total</u>
100 <u>Personnel Services – Salaries</u>				
100 Personnel Services – Salaries	69,934.04			69,934.04
Total Personnel Services – Salaries	\$69,934.04			\$69,934.04
200 <u>Personnel Services – Employee Benefits</u>				
210 Group Insurance – Contracted Provider	886.52			886.52
220 Social Security Contributions	5,348.78			5,348.78
230 PSERS Retirement Contributions	23,776.37			23,776.37
250 Unemployment Compensation	130.01			130.01
260 Workers' Compensation	563.80			563.80
291 Other Retirement Plans	2,825.07			2,825.07
Total Personnel Services – Employee Benefits	\$33,530.55			\$33,530.55
300 <u>Purchased Professional and Technical Services</u>				
330 Other Professional Services	11,231.25			11,231.25
Total Purchased Professional and Technical Services	\$11,231.25			\$11,231.25
500 <u>Other Purchased Services</u>				
530 Communications	500.00			500.00
Total Other Purchased Services	\$500.00			\$500.00
600 <u>Supplies</u>				
610 General Supplies	125.00			125.00
Total Supplies	\$125.00			\$125.00
800 <u>Other Objects</u>				
810 Dues and Fees	99.00			99.00
Total Other Objects	\$99.00			\$99.00
Total 2140 Psychological Services	\$115,419.84			\$115,419.84

LEA : 116195004     Millville Area SD

Printed 12/1/2022 12:03:45 PM

General Fund (10)

2160 Social Work Services	<u>Elementary</u>	<u>Secondary</u>	<u>Federal</u>	<u>Total</u>
100 <u>Personnel Services – Salaries</u>				
100 Personnel Services – Salaries				75,480.18
Total Personnel Services – Salaries				\$75,480.18
200 <u>Personnel Services – Employee Benefits</u>				
210 Group Insurance – Contracted Provider				22,737.54
220 Social Security Contributions				5,392.23
230 PSERS Retirement Contributions				26,387.52
250 Unemployment Compensation				129.99
260 Workers' Compensation				608.44
Total Personnel Services – Employee Benefits				\$55,255.72
300 <u>Purchased Professional and Technical Services</u>				
330 Other Professional Services				22,848.00
Total Purchased Professional and Technical Services				\$22,848.00
500 <u>Other Purchased Services</u>				
580 Travel				766.29
Total Other Purchased Services				\$766.29
600 <u>Supplies</u>				
610 General Supplies				197.43
Total Supplies				\$197.43
Total 2160 Social Work Services				\$154,547.62

LEA : 116195004     Millville Area SD

Printed 12/1/2022 12:03:45 PM

General Fund (10)

2200 Support Services – Instructional Staff	Elementary	Secondary	Federal	Total
<b>100 Personnel Services – Salaries</b>				
100 Personnel Services – Salaries	180,767.82	63,309.00	38,505.81	282,582.63
<b>Total Personnel Services – Salaries</b>	<b>\$180,767.82</b>	<b>\$63,309.00</b>	<b>\$38,505.81</b>	<b>\$282,582.63</b>
<b>200 Personnel Services – Employee Benefits</b>				
210 Group Insurance – Contracted Provider	78,539.53	714.80		79,254.33
220 Social Security Contributions	12,940.13	4,847.61	2,817.67	20,605.41
230 PSERS Retirement Contributions	62,213.05	21,421.37	7,614.47	91,248.89
240 Tuition Reimbursement	3,522.00	12,343.00		15,865.00
250 Unemployment Compensation	379.89	130.00	37.95	547.84
260 Workers' Compensation	1,430.28	510.22	310.33	2,250.83
291 Other Retirement Plans	2,138.80			2,138.80
<b>Total Personnel Services – Employee Benefits</b>	<b>\$161,163.68</b>	<b>\$39,967.00</b>	<b>\$10,780.42</b>	<b>\$211,911.10</b>
<b>300 Purchased Professional and Technical Services</b>				
330 Other Professional Services	4,800.00		11,191.00	15,991.00
340 Technical Services	6,627.16	4,037.15		10,664.31
<b>Total Purchased Professional and Technical Services</b>	<b>\$11,427.16</b>	<b>\$4,037.15</b>	<b>\$11,191.00</b>	<b>\$26,655.31</b>
<b>400 Purchased Property Services</b>				
430 Repairs and Maintenance Services	4,898.57			4,898.57
<b>Total Purchased Property Services</b>	<b>\$4,898.57</b>			<b>\$4,898.57</b>
<b>500 Other Purchased Services</b>				
530 Communications			233,126.25	233,126.25
<b>Total Other Purchased Services</b>			<b>\$233,126.25</b>	<b>\$233,126.25</b>
<b>600 Supplies</b>				
610 General Supplies	36,242.97		100,766.64	137,009.61
640 Books and Periodicals	1,214.58	2,731.05		3,945.63
<b>Total Supplies</b>	<b>\$37,457.55</b>	<b>\$2,731.05</b>	<b>\$100,766.64</b>	<b>\$140,955.24</b>
<b>700 Property</b>				
758 Capitalized Technology Software - Original	27,080.00			27,080.00
768 Capitalized Technology Software - Replacement	6,993.00			6,993.00
<b>Total Property</b>	<b>\$34,073.00</b>			<b>\$34,073.00</b>
<b>800 Other Objects</b>				
810 Dues and Fees	46,043.20			46,043.20
<b>Total Other Objects</b>	<b>\$46,043.20</b>			<b>\$46,043.20</b>
<b>Total 2200 Support Services – Instructional Staff</b>	<b>\$475,830.98</b>	<b>\$110,044.20</b>	<b>\$394,370.12</b>	<b>\$980,245.30</b>

LEA : 116195004     Millville Area SD

Printed 12/1/2022 12:03:45 PM

General Fund (10)

2240 Computer-Assisted Instruction Support Services	Elementary	Secondary	Federal	Total
100 <u>Personnel Services – Salaries</u>				
100 Personnel Services – Salaries	180,767.82	431.00		181,198.82
<b>Total Personnel Services – Salaries</b>	<b>\$180,767.82</b>	<b>\$431.00</b>		<b>\$181,198.82</b>
200 <u>Personnel Services – Employee Benefits</u>				
210 Group Insurance – Contracted Provider	55,801.17			55,801.17
220 Social Security Contributions	12,940.13	32.97		12,973.10
230 PSERS Retirement Contributions	62,213.05	150.59		62,363.64
250 Unemployment Compensation	379.89			379.89
260 Workers' Compensation	1,430.29	3.47		1,433.76
291 Other Retirement Plans	2,138.80			2,138.80
<b>Total Personnel Services – Employee Benefits</b>	<b>\$134,903.33</b>	<b>\$187.03</b>		<b>\$135,090.36</b>
300 <u>Purchased Professional and Technical Services</u>				
330 Other Professional Services	4,800.00			4,800.00
340 Technical Services	3,000.00			3,000.00
<b>Total Purchased Professional and Technical Services</b>	<b>\$7,800.00</b>			<b>\$7,800.00</b>
400 <u>Purchased Property Services</u>				
430 Repairs and Maintenance Services	4,898.57			4,898.57
<b>Total Purchased Property Services</b>	<b>\$4,898.57</b>			<b>\$4,898.57</b>
500 <u>Other Purchased Services</u>				
530 Communications			233,126.25	233,126.25
<b>Total Other Purchased Services</b>			<b>\$233,126.25</b>	<b>\$233,126.25</b>
600 <u>Supplies</u>				
610 General Supplies	36,242.97			36,242.97
<b>Total Supplies</b>	<b>\$36,242.97</b>			<b>\$36,242.97</b>
700 <u>Property</u>				
758 Capitalized Technology Software - Original	27,080.00			27,080.00
768 Capitalized Technology Software - Replacement	6,993.00			6,993.00
<b>Total Property</b>	<b>\$34,073.00</b>			<b>\$34,073.00</b>
800 <u>Other Objects</u>				
810 Dues and Fees	46,043.20			46,043.20
<b>Total Other Objects</b>	<b>\$46,043.20</b>			<b>\$46,043.20</b>
<b>Total 2240 Computer-Assisted Instruction Support Services</b>	<b>\$444,728.89</b>	<b>\$618.03</b>	<b>\$233,126.25</b>	<b>\$678,473.17</b>

LEA : 116195004 Millville Area SD

Printed 12/1/2022 12:03:45 PM

General Fund (10)

2250 School Library Services	<u>Elementary</u>	<u>Secondary</u>	<u>Federal</u>	<u>Total</u>
<b>100 <u>Personnel Services – Salaries</u></b>				
100 Personnel Services – Salaries		62,878.00		62,878.00
<b>Total Personnel Services – Salaries</b>		<b>\$62,878.00</b>		<b>\$62,878.00</b>
<b>200 <u>Personnel Services – Employee Benefits</u></b>				
210 Group Insurance – Contracted Provider	22,738.36	714.80		23,453.16
220 Social Security Contributions		4,814.64		4,814.64
230 PSERS Retirement Contributions		21,270.78		21,270.78
250 Unemployment Compensation		130.00		130.00
260 Workers' Compensation	(0.01)	506.75		506.74
<b>Total Personnel Services – Employee Benefits</b>	<b>\$22,738.35</b>	<b>\$27,436.97</b>		<b>\$50,175.32</b>
<b>300 <u>Purchased Professional and Technical Services</u></b>				
340 Technical Services	3,627.16	4,037.15		7,664.31
<b>Total Purchased Professional and Technical Services</b>	<b>\$3,627.16</b>	<b>\$4,037.15</b>		<b>\$7,664.31</b>
<b>600 <u>Supplies</u></b>				
640 Books and Periodicals	1,214.58	2,731.05		3,945.63
<b>Total Supplies</b>	<b>\$1,214.58</b>	<b>\$2,731.05</b>		<b>\$3,945.63</b>
<b>Total 2250 School Library Services</b>	<b>\$27,580.09</b>	<b>\$97,083.17</b>		<b>\$124,663.26</b>

LEA : 116195004     Millville Area SD

Printed 12/1/2022 12:03:45 PM

General Fund (10)

2260 Instruction and Curriculum Development Services

Elementary                      Secondary                      Federal                      Total

600 <u>Supplies</u>				
610 General Supplies			100,766.64	100,766.64
Total Supplies			\$100,766.64	\$100,766.64
Total 2260 Instruction and Curriculum Development Services			\$100,766.64	\$100,766.64



LEA : 116195004     Millville Area SD

Printed 12/1/2022 12:03:45 PM

General Fund (10)

2270 Instructional Staff Professional Development Services	<u>Elementary</u>	<u>Secondary</u>	<u>Federal</u>	<u>Total</u>
100 <u>Personnel Services – Salaries</u>				
100 Personnel Services – Salaries			38,505.81	38,505.81
Total Personnel Services – Salaries			\$38,505.81	\$38,505.81
200 <u>Personnel Services – Employee Benefits</u>				
220 Social Security Contributions			2,817.67	2,817.67
230 PSERS Retirement Contributions			7,614.47	7,614.47
240 Tuition Reimbursement	3,522.00	12,343.00		15,865.00
250 Unemployment Compensation			37.95	37.95
260 Workers' Compensation			310.33	310.33
Total Personnel Services – Employee Benefits	\$3,522.00	\$12,343.00	\$10,780.42	\$26,645.42
300 <u>Purchased Professional and Technical Services</u>				
330 Other Professional Services			11,191.00	11,191.00
Total Purchased Professional and Technical Services			\$11,191.00	\$11,191.00
Total 2270 Instructional Staff Professional Development Services	\$3,522.00	\$12,343.00	\$60,477.23	\$76,342.23

LEA : 116195004     Millville Area SD

Printed 12/1/2022 12:03:45 PM

General Fund (10)

2300 Support Services – Administration	Elementary	Secondary	Federal	Total
<b>100 <u>Personnel Services – Salaries</u></b>				
100 Personnel Services – Salaries	146,969.82	157,742.28		487,002.10
<b>Total Personnel Services – Salaries</b>	<b>\$146,969.82</b>	<b>\$157,742.28</b>		<b>\$487,002.10</b>
<b>200 <u>Personnel Services – Employee Benefits</u></b>				
210 Group Insurance – Contracted Provider	37,259.96	25,088.57		123,068.77
220 Social Security Contributions	10,524.06	11,534.01		35,615.10
230 PSERS Retirement Contributions	50,501.61	54,393.78		164,553.57
250 Unemployment Compensation	397.07	462.85		1,138.14
260 Workers' Compensation	1,153.16	1,245.74		3,802.48
291 Other Retirement Plans	2,530.80	2,070.00		4,600.80
299 All Other Employee Benefits		10,620.00		10,620.00
<b>Total Personnel Services – Employee Benefits</b>	<b>\$102,366.66</b>	<b>\$105,414.95</b>		<b>\$343,398.86</b>
<b>300 <u>Purchased Professional and Technical Services</u></b>				
330 Other Professional Services				29,312.63
<b>Total Purchased Professional and Technical Services</b>				<b>\$29,312.63</b>
<b>400 <u>Purchased Property Services</u></b>				
440 Rentals	1,828.86	2,075.74		4,540.99
<b>Total Purchased Property Services</b>	<b>\$1,828.86</b>	<b>\$2,075.74</b>		<b>\$4,540.99</b>
<b>500 <u>Other Purchased Services</u></b>				
530 Communications	1,181.35	955.00		2,136.35
549 Other Advertising/Public Relations				7,688.99
580 Travel		270.00		270.00
<b>Total Other Purchased Services</b>	<b>\$1,181.35</b>	<b>\$1,225.00</b>		<b>\$10,095.34</b>
<b>600 <u>Supplies</u></b>				
610 General Supplies	2,231.51	7,628.00		14,894.24
640 Books and Periodicals				410.84
<b>Total Supplies</b>	<b>\$2,231.51</b>	<b>\$7,628.00</b>		<b>\$15,305.08</b>
<b>700 <u>Property</u></b>				
752 Capital Equipment – Original and Additional	1,649.97	1,649.98		3,299.95
<b>Total Property</b>	<b>\$1,649.97</b>	<b>\$1,649.98</b>		<b>\$3,299.95</b>
<b>800 <u>Other Objects</u></b>				
810 Dues and Fees	595.00	595.00		45,818.90
<b>Total Other Objects</b>	<b>\$595.00</b>	<b>\$595.00</b>		<b>\$45,818.90</b>
<b>Total 2300 Support Services – Administration</b>	<b>\$256,823.17</b>	<b>\$276,330.95</b>		<b>\$938,773.85</b>

LEA : 116195004     Millville Area SD

Printed 12/1/2022 12:03:45 PM

General Fund (10)

2310 Board Services

	<u>Elementary</u>	<u>Secondary</u>	<u>Federal</u>	<u>Total</u>
<b>100 <u>Personnel Services – Salaries</u></b>				
100 Personnel Services – Salaries				3,450.00
<b>Total Personnel Services – Salaries</b>				<b>\$3,450.00</b>
<b>200 <u>Personnel Services – Employee Benefits</u></b>				
220 Social Security Contributions				252.91
230 PSERS Retirement Contributions				436.75
250 Unemployment Compensation				7.80
260 Workers' Compensation				27.82
<b>Total Personnel Services – Employee Benefits</b>				<b>\$725.28</b>
<b>600 <u>Supplies</u></b>				
610 General Supplies				309.36
640 Books and Periodicals				410.84
<b>Total Supplies</b>				<b>\$720.20</b>
<b>800 <u>Other Objects</u></b>				
810 Dues and Fees				10,969.55
<b>Total Other Objects</b>				<b>\$10,969.55</b>
<b>Total 2310 Board Services</b>				<b>\$15,865.03</b>

LEA : 116195004     Millville Area SD

Printed 12/1/2022 12:03:45 PM

General Fund (10)

2320 Board Treasurer Services	<u>Elementary</u>	<u>Secondary</u>	<u>Federal</u>	<u>Total</u>
100 <u>Personnel Services – Salaries</u>				
100 Personnel Services – Salaries				1,200.00
Total Personnel Services – Salaries				\$1,200.00
200 <u>Personnel Services – Employee Benefits</u>				
220 Social Security Contributions				91.80
250 Unemployment Compensation				15.60
260 Workers' Compensation				9.72
Total Personnel Services – Employee Benefits				\$117.12
Total 2320 Board Treasurer Services				\$1,317.12

LEA : 116195004     Millville Area SD

Printed 12/1/2022 12:03:45 PM

General Fund (10)

2330 Tax Assessment and Collection Services	<u>Elementary</u>	<u>Secondary</u>	<u>Federal</u>	<u>Total</u>
100 <u>Personnel Services – Salaries</u>				
100 Personnel Services – Salaries				8,145.00
Total Personnel Services – Salaries				\$8,145.00
200 <u>Personnel Services – Employee Benefits</u>				
220 Social Security Contributions				623.14
Total Personnel Services – Employee Benefits				\$623.14
300 <u>Purchased Professional and Technical Services</u>				
330 Other Professional Services				639.88
Total Purchased Professional and Technical Services				\$639.88
600 <u>Supplies</u>				
610 General Supplies				2,131.82
Total Supplies				\$2,131.82
Total 2330 Tax Assessment and Collection Services				\$11,539.84

LEA : 116195004     Millville Area SD

Printed 12/1/2022 12:03:45 PM

General Fund (10)

2340 Staff Relations and Negotiations Services

Elementary

Secondary

Federal

Total

300 Purchased Professional and Technical Services

330 Other Professional Services

26,295.25

Total Purchased Professional and Technical Services				\$26,295.25
Total 2340 Staff Relations and Negotiations Services				\$26,295.25

LEA : 116195004     Millville Area SD

Printed 12/1/2022 12:03:45 PM

General Fund (10)

2350 Legal and Accounting Services	<u>Elementary</u>	<u>Secondary</u>	<u>Federal</u>	<u>Total</u>
300 <u>Purchased Professional and Technical Services</u>				
330 Other Professional Services				1,477.50
Total Purchased Professional and Technical Services				\$1,477.50
Total 2350 Legal and Accounting Services				\$1,477.50

LEA : 116195004     Millville Area SD

Printed 12/1/2022 12:03:45 PM

General Fund (10)

2360 Office of the Superintendent / Executive Director Services	<u>Elementary</u>	<u>Secondary</u>	<u>Federal</u>	<u>Total</u>
<b>100 <u>Personnel Services – Salaries</u></b>				
100 Personnel Services – Salaries				169,495.00
<b>Total Personnel Services – Salaries</b>				<b>\$169,495.00</b>
<b>200 <u>Personnel Services – Employee Benefits</u></b>				
210 Group Insurance – Contracted Provider				60,720.24
220 Social Security Contributions				12,589.18
230 PSERS Retirement Contributions				59,221.43
250 Unemployment Compensation				254.82
260 Workers' Compensation				1,366.04
<b>Total Personnel Services – Employee Benefits</b>				<b>\$134,151.71</b>
<b>300 <u>Purchased Professional and Technical Services</u></b>				
330 Other Professional Services				900.00
<b>Total Purchased Professional and Technical Services</b>				<b>\$900.00</b>
<b>400 <u>Purchased Property Services</u></b>				
440 Rentals				636.39
<b>Total Purchased Property Services</b>				<b>\$636.39</b>
<b>500 <u>Other Purchased Services</u></b>				
530 Communications	355.00	355.00		710.00
549 Other Advertising/Public Relations				7,688.99
<b>Total Other Purchased Services</b>	<b>\$355.00</b>	<b>\$355.00</b>		<b>\$8,398.99</b>
<b>600 <u>Supplies</u></b>				
610 General Supplies				2,593.55
<b>Total Supplies</b>				<b>\$2,593.55</b>
<b>800 <u>Other Objects</u></b>				
810 Dues and Fees				33,659.35
<b>Total Other Objects</b>				<b>\$33,659.35</b>
<b>Total 2360 Office of the Superintendent / Executive Director Services</b>	<b>\$355.00</b>	<b>\$355.00</b>		<b>\$349,834.99</b>



LEA : 116195004 Millville Area SD

Printed 12/1/2022 12:03:45 PM

General Fund (10)

2380 Office of the Principal Services	Elementary	Secondary	Federal	Total
<b>100 Personnel Services – Salaries</b>				
100 Personnel Services – Salaries	146,969.82	157,742.28		304,712.10
<b>Total Personnel Services – Salaries</b>	<b>\$146,969.82</b>	<b>\$157,742.28</b>		<b>\$304,712.10</b>
<b>200 Personnel Services – Employee Benefits</b>				
210 Group Insurance – Contracted Provider	37,259.96	25,088.57		62,348.53
220 Social Security Contributions	10,524.06	11,534.01		22,058.07
230 PSERS Retirement Contributions	50,501.61	54,393.78		104,895.39
250 Unemployment Compensation	397.07	462.85		859.92
260 Workers' Compensation	1,153.16	1,245.74		2,398.90
291 Other Retirement Plans	2,530.80	2,070.00		4,600.80
299 All Other Employee Benefits		10,620.00		10,620.00
<b>Total Personnel Services – Employee Benefits</b>	<b>\$102,366.66</b>	<b>\$105,414.95</b>		<b>\$207,781.61</b>
<b>400 Purchased Property Services</b>				
440 Rentals	1,828.86	2,075.74		3,904.60
<b>Total Purchased Property Services</b>	<b>\$1,828.86</b>	<b>\$2,075.74</b>		<b>\$3,904.60</b>
<b>500 Other Purchased Services</b>				
530 Communications	826.35	600.00		1,426.35
580 Travel		270.00		270.00
<b>Total Other Purchased Services</b>	<b>\$826.35</b>	<b>\$870.00</b>		<b>\$1,696.35</b>
<b>600 Supplies</b>				
610 General Supplies	2,231.51	7,628.00		9,859.51
<b>Total Supplies</b>	<b>\$2,231.51</b>	<b>\$7,628.00</b>		<b>\$9,859.51</b>
<b>700 Property</b>				
752 Capital Equipment – Original and Additional	1,649.97	1,649.98		3,299.95
<b>Total Property</b>	<b>\$1,649.97</b>	<b>\$1,649.98</b>		<b>\$3,299.95</b>
<b>800 Other Objects</b>				
810 Dues and Fees	595.00	595.00		1,190.00
<b>Total Other Objects</b>	<b>\$595.00</b>	<b>\$595.00</b>		<b>\$1,190.00</b>
<b>Total 2380 Office of the Principal Services</b>	<b>\$256,468.17</b>	<b>\$275,975.95</b>		<b>\$532,444.12</b>

LEA : 116195004     Millville Area SD

Printed 12/1/2022 12:03:45 PM

General Fund (10)

2400 Support Services – Pupil Health	<u>Elementary</u>	<u>Secondary</u>	<u>Federal</u>	<u>Total</u>
100 <u>Personnel Services – Salaries</u>				
100 Personnel Services – Salaries				53,502.79
Total Personnel Services – Salaries				\$53,502.79
200 <u>Personnel Services – Employee Benefits</u>				
210 Group Insurance – Contracted Provider				4,160.50
220 Social Security Contributions				4,073.11
230 PSERS Retirement Contributions				18,144.90
250 Unemployment Compensation				132.72
260 Workers' Compensation				431.24
299 All Other Employee Benefits				3,639.50
Total Personnel Services – Employee Benefits				\$30,581.97
300 <u>Purchased Professional and Technical Services</u>				
330 Other Professional Services				6,203.15
Total Purchased Professional and Technical Services				\$6,203.15
500 <u>Other Purchased Services</u>				
580 Travel				205.07
Total Other Purchased Services				\$205.07
600 <u>Supplies</u>				
610 General Supplies				699.88
Total Supplies				\$699.88
700 <u>Property</u>				
762 Capitalized Equipment - Replacement				139.00
Total Property				\$139.00
Total 2400 Support Services – Pupil Health				\$91,331.86

LEA : 116195004     Millville Area SD

Printed 12/1/2022 12:03:45 PM

General Fund (10)

2440 Nursing Services

	<u>Elementary</u>	<u>Secondary</u>	<u>Federal</u>	<u>Total</u>
<b>100 <u>Personnel Services – Salaries</u></b>				
100 Personnel Services – Salaries				53,502.79
<b>Total Personnel Services – Salaries</b>				<b>\$53,502.79</b>
<b>200 <u>Personnel Services – Employee Benefits</u></b>				
210 Group Insurance – Contracted Provider				4,160.50
220 Social Security Contributions				4,073.11
230 PSERS Retirement Contributions				18,144.90
250 Unemployment Compensation				132.72
260 Workers' Compensation				431.24
299 All Other Employee Benefits				3,639.50
<b>Total Personnel Services – Employee Benefits</b>				<b>\$30,581.97</b>
<b>300 <u>Purchased Professional and Technical Services</u></b>				
330 Other Professional Services				6,203.15
<b>Total Purchased Professional and Technical Services</b>				<b>\$6,203.15</b>
<b>500 <u>Other Purchased Services</u></b>				
580 Travel				205.07
<b>Total Other Purchased Services</b>				<b>\$205.07</b>
<b>600 <u>Supplies</u></b>				
610 General Supplies				699.88
<b>Total Supplies</b>				<b>\$699.88</b>
<b>700 <u>Property</u></b>				
762 Capitalized Equipment - Replacement				139.00
<b>Total Property</b>				<b>\$139.00</b>
<b>Total 2440 Nursing Services</b>				<b>\$91,331.86</b>

LEA : 116195004      Millville Area SD

Printed 12/1/2022 12:03:45 PM

General Fund (10)				
2500 Support Services – Business	<u>Elementary</u>	<u>Secondary</u>	<u>Federal</u>	<u>Total</u>
100 <u>Personnel Services – Salaries</u>				
100 Personnel Services – Salaries				202,721.00
Total Personnel Services – Salaries				\$202,721.00
200 <u>Personnel Services – Employee Benefits</u>				
210 Group Insurance – Contracted Provider				54,423.00
220 Social Security Contributions				14,677.38
230 PSERS Retirement Contributions				70,131.87
250 Unemployment Compensation				620.18
260 Workers' Compensation				1,633.84
299 All Other Employee Benefits				189.55
Total Personnel Services – Employee Benefits				\$141,675.82
300 <u>Purchased Professional and Technical Services</u>				
330 Other Professional Services				23,475.00
340 Technical Services				28,888.47
Total Purchased Professional and Technical Services				\$52,363.47
500 <u>Other Purchased Services</u>				
520 Insurance – General				2,331.00
530 Communications				1,800.00
580 Travel				1,001.45
Total Other Purchased Services				\$5,132.45
600 <u>Supplies</u>				
610 General Supplies				2,960.07
Total Supplies				\$2,960.07
800 <u>Other Objects</u>				
810 Dues and Fees				2,189.16
890 Miscellaneous Expenditures				3,017.75
Total Other Objects				\$5,206.91
Total 2500 Support Services – Business				\$410,059.72

LEA : 116195004     Millville Area SD

Printed 12/1/2022 12:03:45 PM

General Fund (10)

2510 Fiscal Services

	<u>Elementary</u>	<u>Secondary</u>	<u>Federal</u>	<u>Total</u>
<b>100 <u>Personnel Services – Salaries</u></b>				
100 Personnel Services – Salaries				202,721.00
<b>Total Personnel Services – Salaries</b>				<b>\$202,721.00</b>
<b>200 <u>Personnel Services – Employee Benefits</u></b>				
210 Group Insurance – Contracted Provider				54,423.00
220 Social Security Contributions				14,677.38
230 PSERS Retirement Contributions				70,131.87
250 Unemployment Compensation				620.18
260 Workers' Compensation				1,633.84
299 All Other Employee Benefits				189.55
<b>Total Personnel Services – Employee Benefits</b>				<b>\$141,675.82</b>
<b>300 <u>Purchased Professional and Technical Services</u></b>				
330 Other Professional Services				23,475.00
340 Technical Services				26,221.92
<b>Total Purchased Professional and Technical Services</b>				<b>\$49,696.92</b>
<b>500 <u>Other Purchased Services</u></b>				
520 Insurance – General				2,331.00
530 Communications				1,800.00
580 Travel				1,001.45
<b>Total Other Purchased Services</b>				<b>\$5,132.45</b>
<b>600 <u>Supplies</u></b>				
610 General Supplies				2,960.07
<b>Total Supplies</b>				<b>\$2,960.07</b>
<b>800 <u>Other Objects</u></b>				
810 Dues and Fees				2,189.16
890 Miscellaneous Expenditures				3,017.75
<b>Total Other Objects</b>				<b>\$5,206.91</b>
<b>Total 2510 Fiscal Services</b>				<b>\$407,393.17</b>

LEA : 116195004      Millville Area SD

Printed 12/1/2022 12:03:45 PM

General Fund (10)				
2511 Supervision of Fiscal Services - Head of Component	<u>Elementary</u>	<u>Secondary</u>	<u>Federal</u>	<u>Total</u>
100 <u>Personnel Services – Salaries</u>				
100 Personnel Services – Salaries				92,000.00
Total Personnel Services – Salaries				\$92,000.00
200 <u>Personnel Services – Employee Benefits</u>				
210 Group Insurance – Contracted Provider				956.61
220 Social Security Contributions				7,050.00
230 PSERS Retirement Contributions				31,445.95
250 Unemployment Compensation				230.19
260 Workers' Compensation				741.52
299 All Other Employee Benefits				189.55
Total Personnel Services – Employee Benefits				\$40,613.82
300 <u>Purchased Professional and Technical Services</u>				
330 Other Professional Services				23,475.00
340 Technical Services				26,221.92
Total Purchased Professional and Technical Services				\$49,696.92
500 <u>Other Purchased Services</u>				
520 Insurance – General				2,331.00
530 Communications				1,800.00
580 Travel				1,001.45
Total Other Purchased Services				\$5,132.45
600 <u>Supplies</u>				
610 General Supplies				2,960.07
Total Supplies				\$2,960.07
800 <u>Other Objects</u>				
810 Dues and Fees				2,189.16
890 Miscellaneous Expenditures				3,017.75
Total Other Objects				\$5,206.91
Total 2511 Supervision of Fiscal Services - Head of Component				\$195,610.17

LEA : 116195004     Millville Area SD

Printed 12/1/2022 12:03:45 PM

General Fund (10)

2515 Financial Accounting Services	<u>Elementary</u>	<u>Secondary</u>	<u>Federal</u>	<u>Total</u>
100 <u>Personnel Services – Salaries</u>				
100 Personnel Services – Salaries				110,721.00
Total Personnel Services – Salaries				\$110,721.00
200 <u>Personnel Services – Employee Benefits</u>				
210 Group Insurance – Contracted Provider				53,466.39
220 Social Security Contributions				7,627.38
230 PSERS Retirement Contributions				38,685.92
250 Unemployment Compensation				389.99
260 Workers' Compensation				892.32
Total Personnel Services – Employee Benefits				\$101,062.00
Total 2515 Financial Accounting Services				\$211,783.00

LEA : 116195004     Millville Area SD

Printed 12/1/2022 12:03:45 PM

General Fund (10)

2530 Warehousing and Distributing Services	<u>Elementary</u>	<u>Secondary</u>	<u>Federal</u>	<u>Total</u>
300 <u>Purchased Professional and Technical Services</u>				
340 Technical Services				2,666.55
Total Purchased Professional and Technical Services				\$2,666.55
Total 2530 Warehousing and Distributing Services				\$2,666.55



LEA : 116195004     Millville Area SD

Printed 12/1/2022 12:03:45 PM

General Fund (10)

2600 Operation and Maintenance of Plant Services	Elementary	Secondary	Federal	Total
100 <u>Personnel Services – Salaries</u>				
100 Personnel Services – Salaries				349,257.06
Total Personnel Services – Salaries				\$349,257.06
200 <u>Personnel Services – Employee Benefits</u>				
210 Group Insurance – Contracted Provider				126,009.37
220 Social Security Contributions				25,118.00
230 PSERS Retirement Contributions				119,798.47
250 Unemployment Compensation				1,589.79
260 Workers' Compensation				2,795.23
291 Other Retirement Plans				5,014.82
Total Personnel Services – Employee Benefits				\$280,325.68
300 <u>Purchased Professional and Technical Services</u>				
330 Other Professional Services				10,341.13
340 Technical Services				5,066.92
350 Security / Safety Services				93,146.32
Total Purchased Professional and Technical Services				\$108,554.37
400 <u>Purchased Property Services</u>				
410 Cleaning Services				6,613.01
420 Utility Services				207,441.20
430 Repairs and Maintenance Services				13,238.02
440 Rentals				10,232.89
Total Purchased Property Services				\$237,525.12
500 <u>Other Purchased Services</u>				
521 Fire Insurance				61,184.00
530 Communications				16,404.47
Total Other Purchased Services				\$77,588.47
600 <u>Supplies</u>				
610 General Supplies	44,212.12	51,246.44		95,458.56
620 Energy				8,139.79
Total Supplies	\$44,212.12	\$51,246.44		\$103,598.35
700 <u>Property</u>				
752 Capital Equipment – Original and Additional				120,141.00
762 Capitalized Equipment - Replacement				28,657.14
Total Property				\$148,798.14
800 <u>Other Objects</u>				
810 Dues and Fees				95.00
Total Other Objects				\$95.00
Total 2600 Operation and Maintenance of Plant Services	\$44,212.12	\$51,246.44		\$1,305,742.19

LEA : 116195004     Millville Area SD

Printed 12/1/2022 12:03:45 PM

General Fund (10)

2610 Supervision of Operation and Maintenance of Plant Services	<u>Elementary</u>	<u>Secondary</u>	<u>Federal</u>	<u>Total</u>
100 <u>Personnel Services – Salaries</u>				
100 Personnel Services – Salaries				58,250.79
Total Personnel Services – Salaries				\$58,250.79
200 <u>Personnel Services – Employee Benefits</u>				
210 Group Insurance – Contracted Provider				17,943.25
220 Social Security Contributions				4,008.01
230 PSERS Retirement Contributions				19,383.76
250 Unemployment Compensation				259.98
260 Workers' Compensation				449.87
291 Other Retirement Plans				5,014.82
Total Personnel Services – Employee Benefits				\$47,059.69
Total 2610 Supervision of Operation and Maintenance of Plant Services				\$105,310.48

LEA : 116195004     Millville Area SD

Printed 12/1/2022 12:03:45 PM

General Fund (10)

2611 Supervision of Operation and Maintenance of Plant Services – Head of Component	<u>Elementary</u>	<u>Secondary</u>	<u>Federal</u>	<u>Total</u>
100 <u>Personnel Services – Salaries</u>				
100 Personnel Services – Salaries				58,250.79
Total Personnel Services – Salaries				\$58,250.79
200 <u>Personnel Services – Employee Benefits</u>				
210 Group Insurance – Contracted Provider				17,943.25
220 Social Security Contributions				4,008.01
230 PSERS Retirement Contributions				19,383.76
250 Unemployment Compensation				259.98
260 Workers' Compensation				449.87
291 Other Retirement Plans				5,014.82
Total Personnel Services – Employee Benefits				\$47,059.69
Total 2611 Supervision of Operation and Maintenance of Plant Services – Head of Component				\$105,310.48

LEA : 116195004     Millville Area SD

Printed 12/1/2022 12:03:45 PM

General Fund (10)				
2620 Operation of Buildings Services	<u>Elementary</u>	<u>Secondary</u>	<u>Federal</u>	<u>Total</u>
100 <u>Personnel Services – Salaries</u>				
100 Personnel Services – Salaries				291,006.27
Total Personnel Services – Salaries				\$291,006.27
200 <u>Personnel Services – Employee Benefits</u>				
210 Group Insurance – Contracted Provider				108,066.12
220 Social Security Contributions				21,109.99
230 PSERS Retirement Contributions				100,414.71
250 Unemployment Compensation				1,329.81
260 Workers' Compensation				2,345.36
Total Personnel Services – Employee Benefits				\$233,265.99
300 <u>Purchased Professional and Technical Services</u>				
330 Other Professional Services				10,341.13
340 Technical Services				5,066.92
Total Purchased Professional and Technical Services				\$15,408.05
400 <u>Purchased Property Services</u>				
410 Cleaning Services				6,613.01
420 Utility Services				207,441.20
430 Repairs and Maintenance Services				13,238.02
440 Rentals				10,232.89
Total Purchased Property Services				\$237,525.12
500 <u>Other Purchased Services</u>				
521 Fire Insurance				61,184.00
530 Communications				16,404.47
Total Other Purchased Services				\$77,588.47
600 <u>Supplies</u>				
610 General Supplies	44,212.12	51,246.44		95,458.56
620 Energy				8,139.79
Total Supplies	\$44,212.12	\$51,246.44		\$103,598.35
700 <u>Property</u>				
752 Capital Equipment – Original and Additional				120,141.00
762 Capitalized Equipment - Replacement				28,657.14
Total Property				\$148,798.14
800 <u>Other Objects</u>				
810 Dues and Fees				95.00
Total Other Objects				\$95.00
Total 2620 Operation of Buildings Services	\$44,212.12	\$51,246.44		\$1,107,285.39

LEA : 116195004     Millville Area SD

Printed 12/1/2022 12:03:45 PM

General Fund (10)

2660 Safety and Security Services

Elementary                      Secondary                      Federal                      Total

300 Purchased Professional and Technical Services

350 Security / Safety Services 93,146.32

**Total Purchased Professional and Technical Services \$93,146.32**

**Total 2660 Safety and Security Services \$93,146.32**

LEA : 116195004     Millville Area SD

Printed 12/1/2022 12:03:45 PM

General Fund (10)

2700 Student Transportation Services	<u>Elementary</u>	<u>Secondary</u>	<u>Federal</u>	<u>Total</u>
100 <u>Personnel Services – Salaries</u>				
100 Personnel Services – Salaries				3,007.38
Total Personnel Services – Salaries				\$3,007.38
200 <u>Personnel Services – Employee Benefits</u>				
220 Social Security Contributions				230.10
230 PSERS Retirement Contributions				1,050.78
250 Unemployment Compensation				19.41
260 Workers' Compensation				24.26
Total Personnel Services – Employee Benefits				\$1,324.55
500 <u>Other Purchased Services</u>				
513 Contracted Carriers				689,899.47
Total Other Purchased Services				\$689,899.47
Total 2700 Student Transportation Services				\$694,231.40

LEA : 116195004     Millville Area SD

Printed 12/1/2022 12:03:45 PM

General Fund (10)

2710 Supervision of Student Transportation Services	<u>Elementary</u>	<u>Secondary</u>	<u>Federal</u>	<u>Total</u>
100 <u>Personnel Services – Salaries</u>				
100 Personnel Services – Salaries				3,007.38
Total Personnel Services – Salaries				\$3,007.38
200 <u>Personnel Services – Employee Benefits</u>				
220 Social Security Contributions				230.10
230 PSERS Retirement Contributions				1,050.78
250 Unemployment Compensation				19.41
260 Workers' Compensation				24.26
Total Personnel Services – Employee Benefits				\$1,324.55
500 <u>Other Purchased Services</u>				
513 Contracted Carriers				678,349.47
Total Other Purchased Services				\$678,349.47
Total 2710 Supervision of Student Transportation Services				\$682,681.40

LEA : 116195004     Millville Area SD

Printed 12/1/2022 12:03:45 PM

General Fund (10)

2711 Supervision of Student Transportation Services – Head of Component	<u>Elementary</u>	<u>Secondary</u>	<u>Federal</u>	<u>Total</u>
100 <u>Personnel Services – Salaries</u>				
100 Personnel Services – Salaries				3,007.38
Total Personnel Services – Salaries				\$3,007.38
200 <u>Personnel Services – Employee Benefits</u>				
220 Social Security Contributions				230.10
230 PSERS Retirement Contributions				1,050.78
250 Unemployment Compensation				19.41
260 Workers' Compensation				24.26
Total Personnel Services – Employee Benefits				\$1,324.55
500 <u>Other Purchased Services</u>				
513 Contracted Carriers				678,349.47
Total Other Purchased Services				\$678,349.47
Total 2711 Supervision of Student Transportation Services – Head of Component				\$682,681.40



LEA : 116195004 Millville Area SD

Printed 12/1/2022 12:03:45 PM

General Fund (10)

2750 Nonpublic Transportation	<u>Elementary</u>	<u>Secondary</u>	<u>Federal</u>	<u>Total</u>
500 <u>Other Purchased Services</u>				
513 Contracted Carriers				11,550.00
Total Other Purchased Services				\$11,550.00
Total 2750 Nonpublic Transportation				\$11,550.00

LEA : 116195004     Millville Area SD

Printed 12/1/2022 12:03:45 PM

General Fund (10)

2800 Support Services – Central				<u>Elementary</u>	<u>Secondary</u>	<u>Federal</u>	<u>Total</u>
100 <u>Personnel Services – Salaries</u>							
100 Personnel Services – Salaries							21,557.17
Total Personnel Services – Salaries							\$21,557.17
200 <u>Personnel Services – Employee Benefits</u>							
210 Group Insurance – Contracted Provider							4,113.56
220 Social Security Contributions							1,535.75
230 PSERS Retirement Contributions							7,389.96
250 Unemployment Compensation							26.01
260 Workers' Compensation							170.56
Total Personnel Services – Employee Benefits							\$13,235.84
Total 2800 Support Services – Central							\$34,793.01

LEA : 116195004     Millville Area SD

Printed 12/1/2022 12:03:45 PM

General Fund (10)

2850 State and Federal Agency Liaison Services	<u>Elementary</u>	<u>Secondary</u>	<u>Federal</u>	<u>Total</u>
100 <u>Personnel Services – Salaries</u>				
100 Personnel Services – Salaries				21,557.17
Total Personnel Services – Salaries				\$21,557.17
200 <u>Personnel Services – Employee Benefits</u>				
210 Group Insurance – Contracted Provider				4,113.56
220 Social Security Contributions				1,535.75
230 PSERS Retirement Contributions				7,389.96
250 Unemployment Compensation				26.01
260 Workers' Compensation				170.56
Total Personnel Services – Employee Benefits				\$13,235.84
Total 2850 State and Federal Agency Liaison Services				\$34,793.01

LEA : 116195004     Millville Area SD

Printed 12/1/2022 12:03:49 PM

General Fund (10)

<b>3000 Operation of Non-Instructional Services</b>		<b><u>Total</u></b>
<b>100 <u>Personnel Services – Salaries</u></b>		
100 Personnel Services – Salaries	125,282.87	
<b>Total Personnel Services – Salaries</b>	<b>\$125,282.87</b>	
<b>200 <u>Personnel Services – Employee Benefits</u></b>		
220 Social Security Contributions	9,550.83	
230 PSERS Retirement Contributions	36,468.07	
250 Unemployment Compensation	898.37	
260 Workers' Compensation	1,009.71	
<b>Total Personnel Services – Employee Benefits</b>	<b>\$47,926.98</b>	
<b>300 <u>Purchased Professional and Technical Services</u></b>		
330 Other Professional Services	55,564.75	
<b>Total Purchased Professional and Technical Services</b>	<b>\$55,564.75</b>	
<b>500 <u>Other Purchased Services</u></b>		
510 Student Transportation Services	24,794.63	
580 Travel	956.81	
<b>Total Other Purchased Services</b>	<b>\$25,751.44</b>	
<b>600 <u>Supplies</u></b>		
610 General Supplies	9,667.57	
<b>Total Supplies</b>	<b>\$9,667.57</b>	
<b>700 <u>Property</u></b>		
752 Capital Equipment – Original and Additional	29,307.37	
<b>Total Property</b>	<b>\$29,307.37</b>	
<b>800 <u>Other Objects</u></b>		
810 Dues and Fees	2,367.00	
<b>Total Other Objects</b>	<b>\$2,367.00</b>	
<b>Total 3000 Operation of Non-Instructional Services</b>	<b>\$295,867.98</b>	

LEA : 116195004     Millville Area SD

Printed 12/1/2022 12:03:49 PM

General Fund (10)				
3200 Student Activities				
	<u>Elementary</u>	<u>Secondary</u>	<u>Federal</u>	<u>Total</u>
100 <u>Personnel Services – Salaries</u>				
100 Personnel Services – Salaries				120,393.00
Total Personnel Services – Salaries				\$120,393.00
200 <u>Personnel Services – Employee Benefits</u>				
220 Social Security Contributions				9,176.76
230 PSERS Retirement Contributions				36,468.07
250 Unemployment Compensation				834.78
260 Workers' Compensation				970.27
Total Personnel Services – Employee Benefits				\$47,449.88
300 <u>Purchased Professional and Technical Services</u>				
330 Other Professional Services				55,564.75
Total Purchased Professional and Technical Services				\$55,564.75
500 <u>Other Purchased Services</u>				
510 Student Transportation Services				24,794.63
580 Travel				956.81
Total Other Purchased Services				\$25,751.44
600 <u>Supplies</u>				
610 General Supplies				9,667.57
Total Supplies				\$9,667.57
700 <u>Property</u>				
752 Capital Equipment – Original and Additional				29,307.37
Total Property				\$29,307.37
800 <u>Other Objects</u>				
810 Dues and Fees				2,367.00
Total Other Objects				\$2,367.00
Total 3200 Student Activities				\$290,501.01

LEA : 116195004     Millville Area SD

Printed 12/1/2022 12:03:49 PM

General Fund (10)

3300 Community Services

Elementary                      Secondary                      Federal                      Total

100 <u>Personnel Services – Salaries</u>				
100 Personnel Services – Salaries				4,889.87
<b>Total Personnel Services – Salaries</b>				<b>\$4,889.87</b>
200 <u>Personnel Services – Employee Benefits</u>				
220 Social Security Contributions				374.07
250 Unemployment Compensation				63.59
260 Workers’ Compensation				39.44
<b>Total Personnel Services – Employee Benefits</b>				<b>\$477.10</b>
<b>Total 3300 Community Services</b>				<b>\$5,366.97</b>

LEA : 116195004     Millville Area SD

Printed 12/1/2022 12:03:59 PM

General Fund (10)

4000 Facilities Acquisition, Construction and Improvement Services

Total

700 <u>Property</u>	
790 Other Property	192,441.53
Total Property	\$192,441.53
Total 4000 Facilities Acquisition, Construction and Improvement Services	\$192,441.53

LEA : 116195004     Millville Area SD

Printed 12/1/2022 12:03:59 PM

General Fund (10)				
4600 Existing Building Improvement Services	<u>Elementary</u>	<u>Secondary</u>	<u>Federal</u>	<u>Total</u>
700 <u>Property</u>				
790 Other Property				192,441.53
Total Property				\$192,441.53
Total 4600 Existing Building Improvement Services				\$192,441.53



LEA : 116195004     Millville Area SD

Printed 12/1/2022 12:04:06 PM

General Fund (10)	
5000 Other Expenditures and Financing Uses	<u>Total</u>
800 <u>Other Objects</u>	
830 Interest	113,616.26
Total Other Objects	\$113,616.26
900 <u>Other Uses of Funds</u>	
910 Redemption of Principal	206,907.76
Total Other Uses of Funds	\$206,907.76
Total 5000 Other Expenditures and Financing Uses	\$320,524.02

LEA : 116195004     Millville Area SD

Printed 12/1/2022 12:04:06 PM

General Fund (10)

5100 Debt Service / Other Expenditures and Financing Uses	<u>Elementary</u>	<u>Secondary</u>	<u>Federal</u>	<u>Total</u>
800 <u>Other Objects</u>				
830 Interest				113,616.26
Total Other Objects				\$113,616.26
900 <u>Other Uses of Funds</u>				
910 Redemption of Principal				206,907.76
Total Other Uses of Funds				\$206,907.76
Total 5100 Debt Service / Other Expenditures and Financing Uses				\$320,524.02

LEA : 116195004     Millville Area SD

Printed 12/1/2022 12:04:06 PM

General Fund (10)

5110 Debt Service	<u>Elementary</u>	<u>Secondary</u>	<u>Federal</u>	<u>Total</u>
800 <u>Other Objects</u>				
830 Interest				113,616.26
Total Other Objects				\$113,616.26
900 <u>Other Uses of Funds</u>				
910 Redemption of Principal				206,907.76
Total Other Uses of Funds				\$206,907.76
Total 5110 Debt Service				\$320,524.02

LEA : 116195004     Millville Area SD

Printed 12/1/2022 12:03:51 PM

Student Sponsored Activity Fund (21)

3200 Student Activities	<u>Elementary</u>	<u>Secondary</u>	<u>Federal</u>	<u>Total</u>
800 <u>Other Objects</u>				
810 Dues and Fees				71,508.00
Total Other Objects				\$71,508.00
Total 3200 Student Activities				\$71,508.00

LEA : 116195004     Millville Area SD

Printed 12/1/2022 12:03:54 PM

Public Purpose (Expendable) Trust Fund (27)

3000 Operation of Non-Instructional Services

Total

800 Other Objects

890 Miscellaneous Expenditures

8,900.00

Total Other Objects

\$8,900.00

Total 3000 Operation of Non-Instructional Services

\$8,900.00

LEA : 116195004     Millville Area SD

Printed 12/1/2022 12:03:54 PM

Public Purpose (Expendable) Trust Fund (27)

3300 Community Services	<u>Elementary</u>	<u>Secondary</u>	<u>Federal</u>	<u>Total</u>
800 <u>Other Objects</u>				
890 Miscellaneous Expenditures				8,900.00
Total Other Objects				\$8,900.00
Total 3300 Community Services				\$8,900.00

LEA : 116195004 Millville Area SD

Printed 12/1/2022 12:04:08 PM

	<u>General Fund(10)</u>	<u>Student Sponsored Activity Fund(21)</u>	<u>Public Purpose Trust(27)</u>	<u>Other Compt Approved (28)</u>	<u>Athletic / Activity(29)</u>
<b>1000 <u>Instruction</u></b>					
1100 Regular Programs - Elementary / Secondary	5,447,094.93				
1200 Special Programs - Elementary / Secondary	1,837,004.47				
1300 Vocational Education	945,907.68				
1400 Other Instructional Programs - Elementary / Secondary	82,215.70				
<b>Total Instruction</b>	<b>\$8,312,222.78</b>				
<b>2000 <u>Support Services</u></b>					
2100 Support Services - Students	672,150.46				
2200 Support Services - Instructional Staff	980,245.30				
2300 Support Services - Administration	938,773.85				
2400 Support Services - Pupil Health	91,331.86				
2500 Support Services - Business	410,059.72				
2600 Operation and Maintenance of Plant Services	1,305,742.19				
2700 Student Transportation Services	694,231.40				
2800 Support Services - Central	34,793.01				
<b>Total Support Services</b>	<b>\$5,127,327.79</b>				
<b>3000 <u>Operation of Non-Instructional Services</u></b>					
3200 Student Activities	290,501.01	71,508.00			
3300 Community Services	5,366.97			8,900.00	
<b>Total Operation of Non-Instructional Services</b>	<b>\$295,867.98</b>	<b>\$71,508.00</b>		<b>\$8,900.00</b>	
<b>4000 <u>Facilities Acquisition, Construction and Improvement Services</u></b>					
4600 Existing Building Improvement Services	192,441.53				
<b>Total Facilities Acquisition, Construction and Improvement Services</b>	<b>\$192,441.53</b>				
<b>5000 <u>Other Expenditures and Financing Uses</u></b>					
5100 Debt Service / Other Expenditures and Financing Uses	320,524.02				
<b>Total Other Expenditures and Financing Uses</b>	<b>\$320,524.02</b>				
<b>TOTAL ACTUAL EXPENDITURES &amp; OTHER FINANCING USES</b>	<b>\$14,248,384.10</b>	<b>\$71,508.00</b>		<b>\$8,900.00</b>	

LEA : 116195004 Millville Area SD

Printed 12/1/2022 12:04:08 PM

	<u>Capital Reserve (690.1850)(31)</u>	<u>Capital Reserve (1431)(32)</u>	<u>Other Capital Projects Fund(39)</u>	<u>Debt Service(40)</u>	<u>Permanent(90)</u>
<b>1000 Instruction</b>					
1100 Regular Programs - Elementary / Secondary					
1200 Special Programs - Elementary / Secondary					
1300 Vocational Education					
1400 Other Instructional Programs - Elementary / Secondary					
<b>Total Instruction</b>					
<b>2000 Support Services</b>					
2100 Support Services - Students					
2200 Support Services - Instructional Staff					
2300 Support Services - Administration					
2400 Support Services - Pupil Health					
2500 Support Services - Business					
2600 Operation and Maintenance of Plant Services					
2700 Student Transportation Services					
2800 Support Services - Central					
<b>Total Support Services</b>					
<b>3000 Operation of Non-Instructional Services</b>					
3200 Student Activities					
3300 Community Services					
<b>Total Operation of Non-Instructional Services</b>					
<b>4000 Facilities Acquisition, Construction and Improvement Services</b>					
4600 Existing Building Improvement Services					
<b>Total Facilities Acquisition, Construction and Improvement Services</b>					
<b>5000 Other Expenditures and Financing Uses</b>					
5100 Debt Service / Other Expenditures and Financing Uses					
<b>Total Other Expenditures and Financing Uses</b>					
<b>TOTAL ACTUAL EXPENDITURES &amp; OTHER FINANCING USES</b>					



LEA : 116195004 Millville Area SD

Printed 12/1/2022 12:04:08 PM

	<u>Total</u>
<b>1000 <u>Instruction</u></b>	
1100 Regular Programs - Elementary / Secondary	5,447,094.93
1200 Special Programs - Elementary / Secondary	1,837,004.47
1300 Vocational Education	945,907.68
1400 Other Instructional Programs - Elementary / Secondary	82,215.70
<b>Total Instruction</b>	<b>\$8,312,222.78</b>
<b>2000 <u>Support Services</u></b>	
2100 Support Services - Students	672,150.46
2200 Support Services - Instructional Staff	980,245.30
2300 Support Services - Administration	938,773.85
2400 Support Services - Pupil Health	91,331.86
2500 Support Services - Business	410,059.72
2600 Operation and Maintenance of Plant Services	1,305,742.19
2700 Student Transportation Services	694,231.40
2800 Support Services - Central	34,793.01
<b>Total Support Services</b>	<b>\$5,127,327.79</b>
<b>3000 <u>Operation of Non-Instructional Services</u></b>	
3200 Student Activities	362,009.01
3300 Community Services	14,266.97
<b>Total Operation of Non-Instructional Services</b>	<b>\$376,275.98</b>
<b>4000 <u>Facilities Acquisition, Construction and Improvement Services</u></b>	
4600 Existing Building Improvement Services	192,441.53
<b>Total Facilities Acquisition, Construction and Improvement Services</b>	<b>\$192,441.53</b>
<b>5000 <u>Other Expenditures and Financing Uses</u></b>	
5100 Debt Service / Other Expenditures and Financing Uses	320,524.02
<b>Total Other Expenditures and Financing Uses</b>	<b>\$320,524.02</b>
<b>TOTAL ACTUAL EXPENDITURES &amp; OTHER FINANCING USES</b>	<b>\$14,328,792.10</b>

LEA : 116195004 Millville Area SD

Printed 12/1/2022 12:04:17 PM

PSERS Salary Data (Salary Data should relate to the General Fund only)

Amount	Description	Amount
	Total Salary Base for salaries subject to PSERS withholding	6,008,809.00
	Total Federally Funded salaries subject to PSERS withholding	358,532.40

Title I Expenditure Data

Amount	Description	Amount
	Expenditures Funded with Current Title I Funds	226,495.88
	Expenditures Funded with Carry over Title I Funds	23,323.88
Total	Title I Expenditure Data	\$249,819.76

Title IV Revenue Data

Amount	Description	Amount
	Revenue from Title IV-A-1: Student Support and Academic Enrichment Grants	10,748.80
	Revenue from Title IV-B: 21st Century Community Learning Centers	

Title V Revenue Data

Amount	Description	Amount
	Revenue from Title V-B-2: Rural and Low-Income School Programs	
	Revenue from Title V-B-1: Small Rural School Achievement (Directly from the Federal Govt)	

LEA : 116195004     Millville Area SD

1 . <u>Current Special Education Expenditures within &lt;b&gt;Function 1000.&lt;/b&gt;\r\nSee list of exclusions in the note below.</u>	1,542,824.00
2 . <u>Current Special Education Expenditures within &lt;b&gt;Function 2000.&lt;/b&gt;\r\nSee list of exclusions in the note below.</u>	1,109,656.52
3 . <u>Current Special Education Expenditures within &lt;b&gt;Sub-Function 2100.&lt;/b&gt;\r\nThis data should also be included in line 2 above.\r\nSee list of exclusions in the note below.</u>	145,556.15
4 . <u>Current Special Education Expenditures within &lt;b&gt;Sub-Function 2200.&lt;/b&gt;\r\nThis data should also be included in line 2 above.\r\nSee list of exclusions in the note below.</u>	212,125.08
5 . <u>Current Special Education Expenditures within &lt;b&gt;Sub-Function 2700.&lt;/b&gt;\r\nThis data should also be included in line 2 above.\r\nSee list of exclusions in the note below.</u>	150,231.67
6 . <u>Current Special Education Expenditures within &lt;b&gt;Sub-Function 3100.&lt;/b&gt;\r\nSee list of exclusions in the note below.</u>	
7 . <u>Current Special Education Expenditures within &lt;b&gt;Sub-Function 3200.&lt;/b&gt;\r\nSee list of exclusions in the note below.</u>	62,864.42

Note: The Current Special Education Expenditure amounts for each line should be calculated as follows:

- \* Include the total expenditures for special education costs from all funds for the function/sub-function requested
- \* Exclude data from sub-functions: 1243,1450,1500,1600,1807,2280,2450,2750,2990
- \* Exclude data from objects: 322,511,512,516,561,562,564,566,592,593,594,595,596,597,700,830,899

Benefits for Staff Relative to Collective Bargaining Agreements

	OBJECT	COVERED	NOT COVERED	TOTAL
10 General Fund	No Self Insurance data to report			
	211 Medical Insurance	1,393,461.82	114,408.00	1,507,869.82
	212 Dental Insurance	49,336.61	4,253.15	53,589.76
	215 Eye Care Insurance	9,942.10	857.85	10,799.95
	216 Prescription Insurance			
	271 Self-Insurance Medical Benefits			
	272 Self-Insurance Dental Benefits			
	275 Self-Insurance Eye Care Benefits			
	276 Self-Insurance Prescription Benefits			
	FUND TOTAL	\$1,452,740.53	\$119,519.00	\$1,572,259.53
50 Enterprise Fund	No Self Insurance data to report			
	211 Medical Insurance	4,776.00		4,776.00
	212 Dental Insurance	268.68		268.68
	215 Eye Care Insurance	54.24		54.24
	216 Prescription Insurance			
	271 Self-Insurance Medical Benefits			
	272 Self-Insurance Dental Benefits			
	275 Self-Insurance Eye Care Benefits			
	276 Self-Insurance Prescription Benefits			
	FUND TOTAL	\$5,098.92		\$5,098.92
60 Internal Service Fund	No Self Insurance data to report			
	211 Medical Insurance			
	212 Dental Insurance			
	215 Eye Care Insurance			
	216 Prescription Insurance			
	271 Self-Insurance Medical Benefits			
	272 Self-Insurance Dental Benefits			
	275 Self-Insurance Eye Care Benefits			
	276 Self-Insurance Prescription Benefits			
	FUND TOTAL			
Total of All Funds		\$1,457,839.45	\$119,519.00	\$1,577,358.45

LEA : 116195004     Millville Area SD

Printed 12/1/2022 12:04:33 PM

Function	Special Education (Prior Year)	Nonspecial Education (Prior Year)	Total (Prior Year)	Special Education (Current Year)	Nonspecial Education (Current Year)	Total (Current Year)
2120 Guidance Services	40,304.54	145,941.44	186,245.98	44,417.80	160,274.22	204,692.02
2140 Psychological Services	18,681.82	67,646.29	86,328.11	25,045.90	90,373.94	115,419.84
2150 Speech Pathology and Audiology Services						
2160 Social Work Services	26,863.22	97,270.83	124,134.05	33,536.55	121,011.07	154,547.62
2260 Instruction and Curriculum Development Services	3,934.09	14,245.23	18,179.32	21,866.18	78,900.46	100,766.64
2350 Legal and Accounting Services	129.84	470.16	600.00	320.61	1,156.89	1,477.50
2420 Medical Services	2,575.43	9,325.55	11,900.98			
2440 Nursing Services	28,270.84	102,367.82	130,638.66	19,818.85	71,513.01	91,331.86
2700 Student Transportation Services	136,592.95	494,598.65	631,191.60	150,646.96	543,584.44	694,231.40
Total	\$257,352.73	\$931,865.97	\$1,189,218.70	\$295,652.85	\$1,066,814.03	\$1,362,466.88

LEA : 116195004 Millville Area SD

Printed 12/1/2022 12:04:35 PM

(PRINCIPAL AMOUNTS ONLY)

**GOVERNMENTAL FUNDS/ ACTIVITIES**

	Short-Term Borrowing	General Obligation Bonds/Notes	Authority Building Obligations	OLTD, Ext Term Fin, Leases	Other Post- Employment Benefits (OPEB)	Compensated Absences	Net Pension Liability	Total
1. Debt at Beginning of Fiscal Year		3,565,000.00		21,707.00	1,133,543.00	275,482.00	21,124,000.00	26,119,732.00
2. Additional Debt Incurred During Year					71,029.00	7,145.00		78,174.00
3. Retirements and Repayments		185,000.00		21,707.00	97,579.00	17,009.00	3,593,000.00	3,914,295.00
4. Debt at End of Fiscal Year		3,380,000.00			1,106,993.00	265,618.00	17,531,000.00	22,283,611.00
5. Accreted Interest at End Of Fiscal Year								
6. Total Debt and Accreted Interest		3,380,000.00			1,106,993.00	265,618.00	17,531,000.00	22,283,611.00
7. Current Portion P&I - Due within 1 year		299,916.00		21,706.67				321,622.67
8. Interest Paid during current fiscal year		113,616.26		201.09				113,817.35

(PRINCIPAL AMOUNTS ONLY)

**PROPRIETARY FUNDS**

- 1. Debt at Beginning of Fiscal Year
- 2. Additional Debt Incurred During Year
- 3. Retirements and Repayments
- 4. Debt at End of Fiscal Year
- 5. Accreted Interest at End Of Fiscal Year
- 6. Total Debt and Accreted Interest
- 7. Current Portion P&I - Due within 1 year
- 8. Interest Paid during current fiscal year

LEA : 116195004     Millville Area SD

Printed 12/1/2022 12:04:35 PM

Total Principal and Interest Payments Made by Your School - All Funds

Function	Fund		Principal (910)	Principal (920)	Interest (830)	Total (Principal +Interest)	Misc Other Uses (990)
5110	10	General Fund	206,907.76		113,616.26	320,524.02	
5110	20	Special Revenue Funds					
5110	30	Capital Projects Funds					
5110	40	Debt Service Fund					
5110	90	Permanent Fund					
5120	10	General Fund					
5120	20	Special Revenue Funds					
5120	30	Capital Projects Funds					
5120	40	Debt Service Fund					
5140	10	General Fund					
5140	20	Special Revenue Funds					
5140	30	Capital Projects Funds					
5140	40	Debt Service Fund					
5140	90	Permanent Fund					
Total Debt Payments - Governmental Funds			\$206,907.76		\$113,616.26	\$320,524.02	

Function	Fund		Principal (910)	Principal (920)	Interest (830)	Total (Principal +Interest)
5110	50	Enterprise Fund				
5110	60	Internal Service Fund				
5120	50	Enterprise Fund				
5120	60	Internal Service Fund				
5140	50	Enterprise Fund				
5140	60	Internal Service Fund				
Total Debt Payments - Proprietary Funds						

LEA : 116195004 Millville Area SD

Printed 12/1/2022 12:04:35 PM

**Debt Details**  
**Governmental Funds/ Activities**

Debt Category	Debt Issue Date (MM/YYYY)	Principal Amounts Only				Current Portion Due Within One Year (Principal and Interest)	Interest Paid During Fiscal Year
		Debt at Beginning of Fiscal Year	Additions	Reductions / Repayments	Debt at End of Fiscal Year		
General Obligation Bonds/Notes – CIB	04/2019	3,565,000.00		185,000.00	3,380,000.00	299,916.00	113,616.26
Other Long Term Debt/Liabilities		21,707.00		21,707.00		21,706.67	201.09
Compensated Absences		275,482.00	7,145.00	17,009.00	265,618.00		
Other Post-Employment Benefits (OPEB)		1,133,543.00	71,029.00	97,579.00	1,106,993.00		
Net Pension Liability		21,124,000.00		3,593,000.00	17,531,000.00		
Totals for Debt Entered:		\$26,119,732.00	\$78,174.00	\$3,914,295.00	\$22,283,611.00	\$321,622.67	\$113,817.35



LEA : 116195004 Millville Area SD

Printed 12/1/2022 12:04:39 PM

General Fund (10)

Section 1: Tuition/Purchased Services as Reported within Expenditure Detail	Amount
Tuition Reported in General Fund Expenditures 1000-560	1,198,281.56
Purchased Services in General Fund Expenditures 1000-594 and 1000-597	
<b>Section 1 Total</b>	<b>\$1,198,281.56</b>

Section 2: Tuition Paid to Institution Types During Fiscal Year	Tuition Paid For Nonspecial Education	Tuition Paid For Special Education	Total
1 1306 Institutions			
2 Institutionalized Children's Programs			
3 Juveniles Incarcerated in Adult Facilities			
4 Residential Treatment Facilities			
5 Other Local Education Agencies	170,373.78		170,373.78
6 Brick and Mortar Charter Schools			
7 Cyber Charter Schools	201,559.82	53,349.12	254,908.94
8 Career and Technology Centers	566,065.90	78,183.00	644,248.90
9 Approved Private Schools			
10 PA Chartered Schools for the Deaf and Blind			
11 Private Residential Rehabilitative Institutions			
12 Juvenile Detention Centers			
13 Special Program Jointures			
14 Other Tuition Not Included Elsewhere In This Section	71,121.00	57,628.94	128,749.94
<b>Section 2 Total</b>	<b>\$1,009,120.50</b>	<b>\$189,161.06</b>	<b>\$1,198,281.56</b>

LEA : 116195004     Millville Area SD

Printed 12/1/2022 12:04:44 PM

Food Service / Cafeteria Operations Fund (51)

3000 Operation of Non-Instructional Services		<u>Total</u>
100 <u>Personnel Services – Salaries</u>		
100 Personnel Services – Salaries	97,066.97	
Total Personnel Services – Salaries		\$97,066.97
200 <u>Personnel Services – Employee Benefits</u>		
210 Group Insurance – Contracted Provider	4,700.92	
220 Social Security Contributions	7,060.22	
230 PSERS Retirement Contributions	31,497.50	
250 Unemployment Compensation	751.49	
260 Workers' Compensation	782.45	
Total Personnel Services – Employee Benefits		\$44,792.58
400 <u>Purchased Property Services</u>		
430 Repairs and Maintenance Services	9,595.10	
Total Purchased Property Services		\$9,595.10
500 <u>Other Purchased Services</u>		
570 Food Service Management	162,358.00	
Total Other Purchased Services		\$162,358.00
600 <u>Supplies</u>		
610 General Supplies	1,337.00	
630 Food	20,404.85	
Total Supplies		\$21,741.85
700 <u>Property</u>		
740 Depreciation	267.00	
Total Property		\$267.00
800 <u>Other Objects</u>		
810 Dues and Fees	145.99	
Total Other Objects		\$145.99
Total 3000 Operation of Non-Instructional Services		\$335,967.49

LEA : 116195004 Millville Area SD

Printed 12/1/2022 12:04:44 PM

Food Service / Cafeteria Operations Fund (51)

3100 Food Services	<u>Elementary</u>	<u>Secondary</u>	<u>Federal</u>	<u>Total</u>
100 <u>Personnel Services – Salaries</u>				
100 Personnel Services – Salaries				97,066.97
Total Personnel Services – Salaries				\$97,066.97
200 <u>Personnel Services – Employee Benefits</u>				
210 Group Insurance – Contracted Provider				4,700.92
220 Social Security Contributions				7,060.22
230 PSERS Retirement Contributions				31,497.50
250 Unemployment Compensation				751.49
260 Workers' Compensation				782.45
Total Personnel Services – Employee Benefits				\$44,792.58
400 <u>Purchased Property Services</u>				
430 Repairs and Maintenance Services				9,595.10
Total Purchased Property Services				\$9,595.10
500 <u>Other Purchased Services</u>				
570 Food Service Management				162,358.00
Total Other Purchased Services				\$162,358.00
600 <u>Supplies</u>				
610 General Supplies				1,337.00
630 Food				20,404.85
Total Supplies				\$21,741.85
700 <u>Property</u>				
740 Depreciation				267.00
Total Property				\$267.00
800 <u>Other Objects</u>				
810 Dues and Fees				145.99
Total Other Objects				\$145.99
Total 3100 Food Services				\$335,967.49

	<u>Food Service(51)</u>	<u>Child Care Operations(52)</u>	<u>Other Enterprise(58)</u>	<u>Internal Service(60)</u>	<u>Total</u>
<b>3000 <u>Operation of Non-Instructional Services</u></b>					
3100 Food Services	335,967.49				335,967.49
<b>Total Operation of Non-Instructional Services</b>	<b>\$335,967.49</b>				<b>\$335,967.49</b>
<b>TOTAL ACTUAL EXPENDITURES &amp; OTHER FINANCING USES</b>	<b>\$335,967.49</b>				<b>\$335,967.49</b>

LEA : 116195004 Millville Area SD

Printed 12/1/2022 12:04:52 PM

Fund	School	School Number	Local Personnel	Local Nonpersonnel	State Personnel	State Nonpersonnel	Federal Personnel	Federal Nonpersonnel	Total	Explanation
10										
	Millville Area EI Sch	7064	2,387,935.21	672,424.13	3,107,614.87	316,971.56	213,271.06	440,667.98	7,138,884.81	
	Millville Area JSHS	1623	2,004,817.42	1,000,656.24	3,107,614.87	316,971.56	213,271.06	440,667.98	7,083,999.13	
Total			4,392,752.63	1,673,080.37	6,215,229.74	633,943.12	426,542.12	881,335.96	14,222,883.94	