

GROWING FORWARD



GATEWAY

RECONFIGURATION

**OF GUSD
SCHOOLS**

Dear Gateway Unified School District Families,

GUSD is moving forward with a thoughtful reconfiguration plan designed to strengthen programs, expand opportunities, and better serve our Shasta Lake and North Redding communities. The Reconfiguration of Our Schools was designed with students at the center of every decision, aligning grade-level structures that support student growth, maximize resources, and prepare every Gateway Unified School District learner for success.

What's Changing

Beginning in the 2026-2027 school year, GUSD will transition to:
Two TK - 4 elementary schools (Grand Oaks Elementary and River Ridge Elementary-formerly Buckeye School relocated school to the Gateway Learning Center site).

One middle school serving grades 5 - 8 (Shasta Lake Middle School)

One comprehensive high school (Central Valley High School remains unchanged)

Alternative Education and Independent Study campuses (MLHS, Toyon Learning Center, GEO, CDS remain unchanged)

Why Reconfiguration Matters

The Reconfiguration of our schools is based on a careful review of enrollment trends, facilities, and robust community input. It brings several important benefits:
Stronger TK - 4 instruction: Social, academic, and developmental advantages for our earliest and youngest learners.

A unified middle school: Greater academic breadth, more extracurricular opportunities, and stronger athletic programs.

Efficient use of resources: Aligning staffing and class sizes strengthens our budget while supporting high-quality instruction.

Modernized facilities: Bond-funded projects will ensure safe, updated learning environments. Supporting Students, Families, and Staff

We understand that change can be unsettling. Families may now have children at two schools instead of one. Teachers and staff will be transitioning to new assignments and sites. That's why we are prioritizing:

Looking Ahead

Over the next year, our district will:

- Establish new boundaries and timelines for facilities and moves.
- Engage with families and staff at affected sites.
- Launch a student recruitment plan to strengthen TK/K enrollment.

Thank you for your partnership as we take this next step forward. You can expect regular updates throughout this process. We invite you to stay engaged and share feedback. Together, we remain one district, one community, one direction. Please review the following information about each of our sites and the FAQs.

Sincerely,

Kyle Turner
Superintendent
Gateway Unified School District



VISION

*WHAT WILL GRAND OAKS,
RIVER RIDGE AND
SHASTA LAKE MIDDLE SCHOOL
LOOK LIKE?*

GUSD

LET'S CONNECT!



At Grand Oaks Elementary, we are building a vision for the future that gives every child the best start possible. Families will soon see a campus designed with both beauty and function in mind, beginning with a completely reimagined parent-student pickup area for safe and easy access. Our grounds are undergoing a major transformation with new landscaping and curb appeal that reflect the pride of our community.

The brand-new TK Kinder Center will feature five modern classrooms and a vibrant multi-purpose space where students can learn, play, and explore together.

To match, we are creating expanded outdoor play areas designed to spark imagination, encourage collaboration, and foster friendships. From the youngest learners in our TK program to the entire school community, Grand Oaks is becoming a place where families feel welcomed, students thrive, and learning comes alive every day.

The images shared represent ideas of what this campus will look like and are not finalized designs, but they capture the exciting direction of our vision.



GRAND OAKS

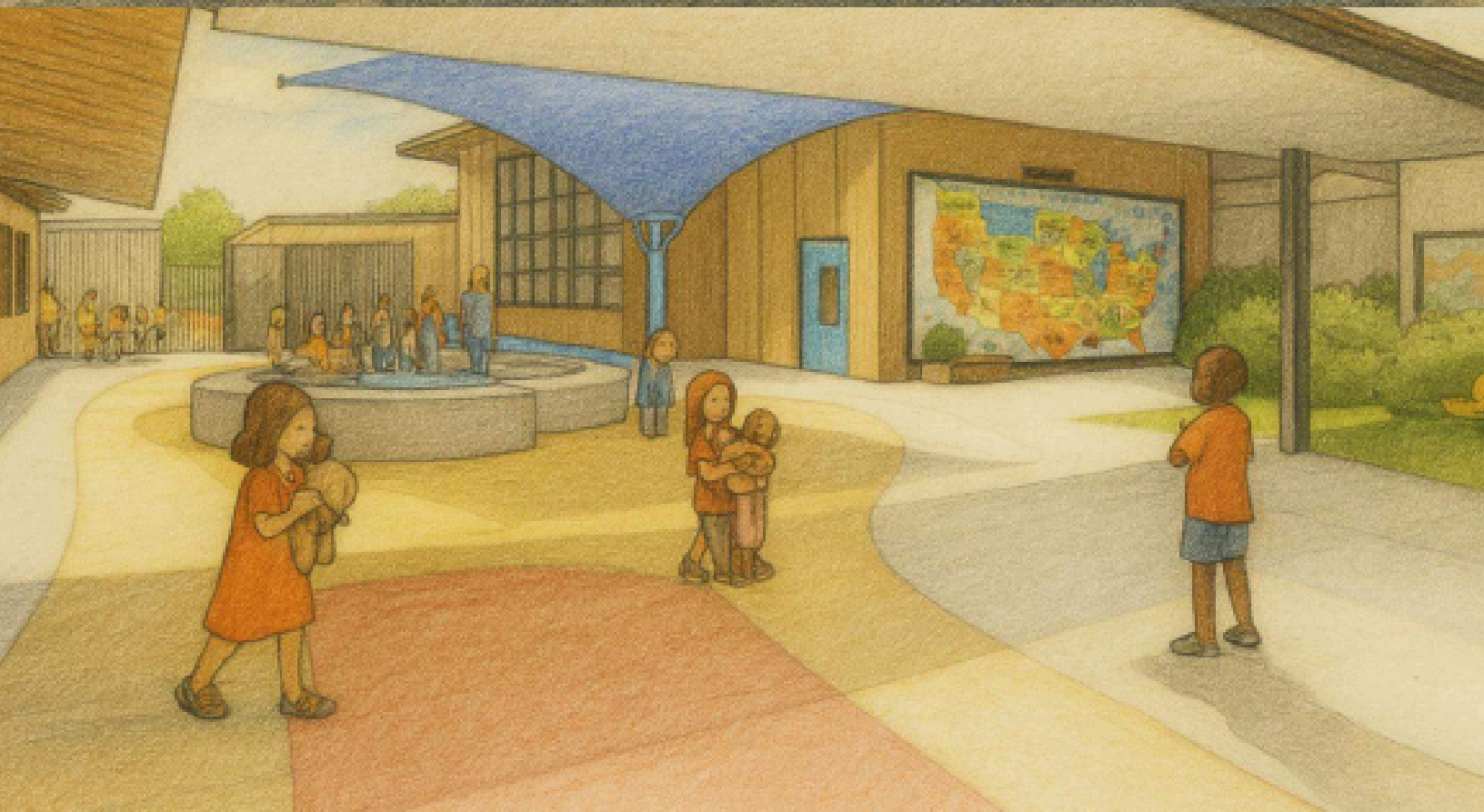
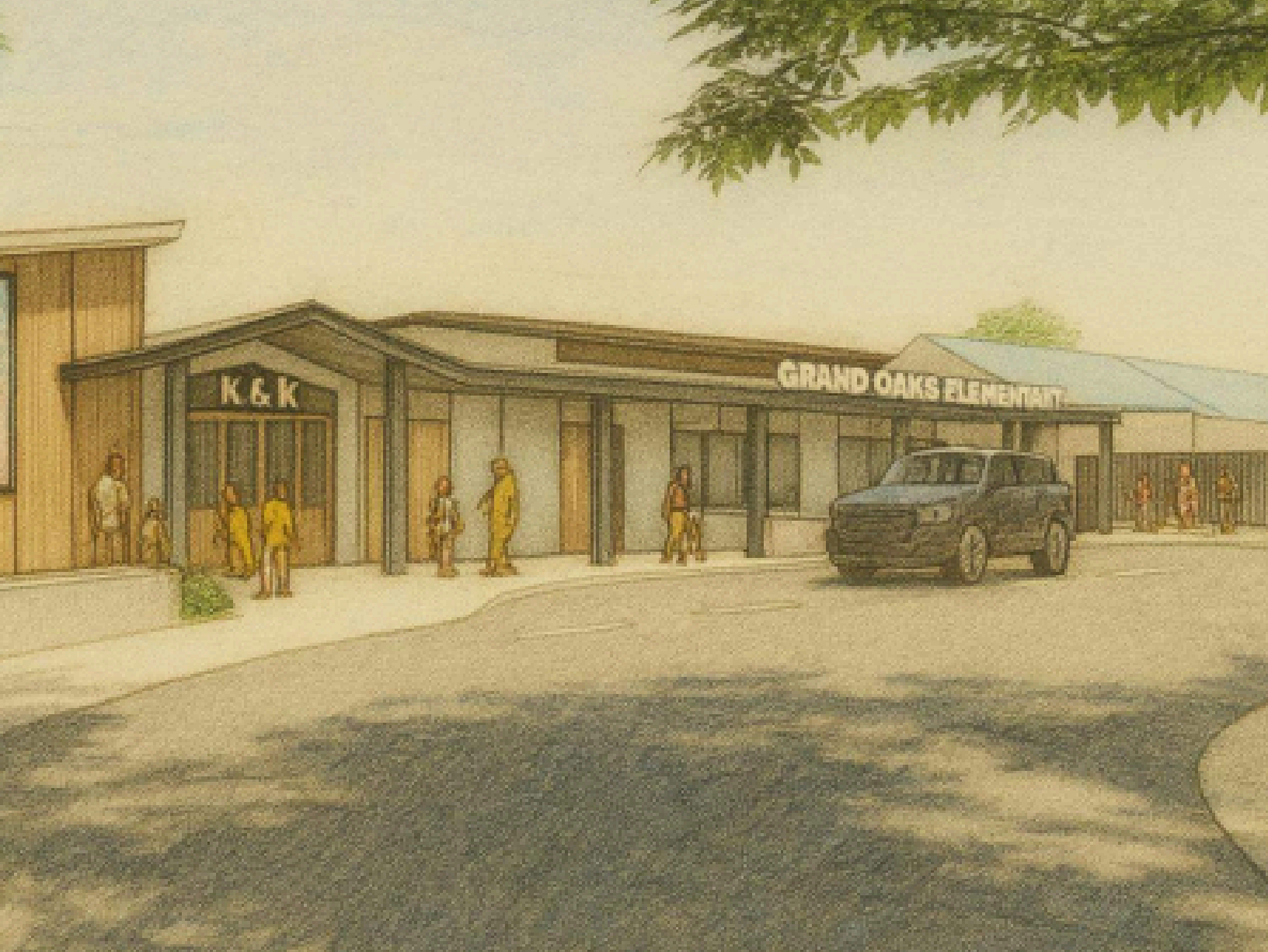
CAMPUS PLANS





Grand Oaks TK/K Classroom Design Options







At River Ridge Elementary School, home of the Otters, we are moving to an inviting TK-4 campus on Tamarack Drive, designed to inspire young learners and welcome families from across our community.

Located at the former Gateway Learning Center, River Ridge will provide an exceptional environment tailored to the unique needs of TK-4 students, with room to grow and thrive at every stage. The campus is already undergoing a complete makeover with major renovations that will bring fresh energy and pride to the site, including modernized facilities, colorful murals and fresh paint across the entire campus, new play structures, and improved parking for families.

With its prime location and engaging new design, River Ridge is poised to become a destination school that will draw new families into our district.

We are thrilled about the opportunities this campus will provide for our youngest students and the exciting future it represents for the entire Gateway Unified School District.





RIVER RIDGE

CAMPUS PLANS







At Shasta Lake Middle School, we are creating a dynamic home for all Gateway students to grow, connect, and succeed. As the district's unified middle school, Shasta Lake will offer stronger academics, expanded athletics, engaging clubs, and exciting career technical education opportunities that prepare students for the future.

A striking new two-story building will serve as the crown jewel of the campus, welcoming families and students with eight state-of-the-art classrooms, modern conference spaces for meaningful family meetings, and new restrooms.

The redesigned campus will feature open spaces and a central courtyard that give students the feel of a true middle school environment, fostering connection and pride. Looking ahead, an all-weather track will add even more opportunities for student athletics and community events.

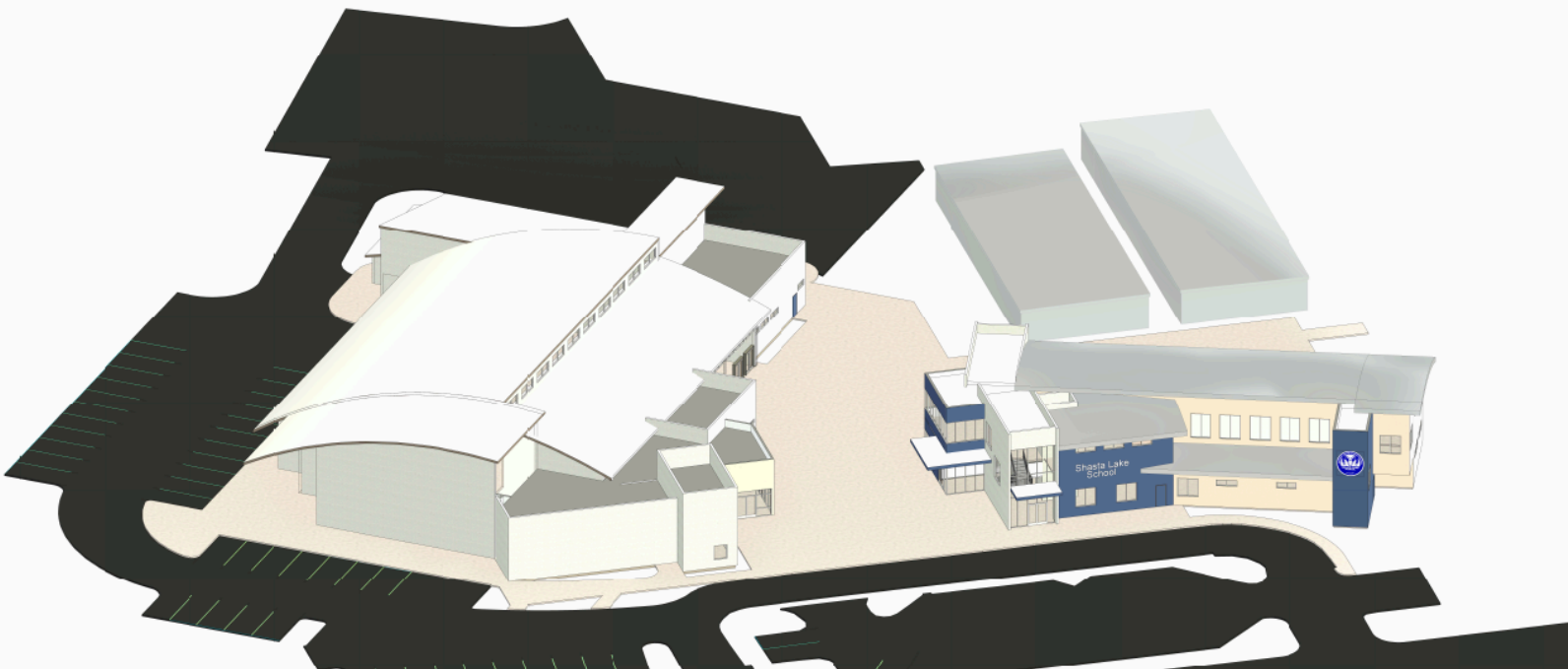
Shasta Lake Middle School is on its way to becoming a vibrant hub of learning and opportunity where every student can discover their path and thrive.



SHASTA LAKE MIDDLE

*PLANNED TWO STORY
BUILDING ADDITION*







Frequently Asked Questions (FAQs) Gateway Unified School District Reconfiguration of Our Schools

Q: Why is the district reconfiguring schools?

A: The reconfiguration of Our Schools comes after reviewing enrollment trends, facility capacity, and community feedback. With students at the center of every decision, this plan allows our district to align grade-level structures, strengthen programs, modernize facilities, and make the most efficient use of district resources for our students, teachers, staff, families, and the community.

Q: What schools and grade levels will change?

A: Beginning in the 2026-2027 school year

- **Two elementary schools (TK - 4):**
 - Grand Oaks Elementary
 - River Ridge Elementary (formerly Buckeye School relocated school at the Gateway Learning Center site)
- **One middle school (5 - 8):** Shasta Lake Middle School

There will be no changes to Central Valley High School 9-12 or our alternative and independent programs at Toyon Learning Center-MLHS, GEO, CDS

Q: What are the benefits to students?

A: The reconfiguration of Our Schools was designed with students at the center of every decision. This plan ensures that every student has access to high-quality programs, supportive environments, and expanded opportunities to grow and succeed. Benefits include:

- Stronger TK - 4 instruction aligned to developmental needs.
- A unified middle school with broader academic, extracurricular, and athletic opportunities.
- More efficient class sizes and staffing to support quality teaching.
- Modernized, bond-funded facilities that are safe and up to date.

Q: Will special education or student support services change or be impacted?

A: As the district establishes new grade-level configurations, we remain committed to ensuring that students continue to receive the individualized education programs (IEPs), counseling, and other critical supports they need. Our priority is strong communication with families and a smooth transition process, with the goal of providing consistent, high-quality services for every student.

Q: Will athletics and extracurriculars be offered at the new middle school?

A: The unified 5-8 middle school at Shasta Lake will expand access to athletics and extracurricular activities. Students will benefit from stronger athletic programs, a wider range of clubs, and more opportunities to participate in enrichment activities, giving them experiences similar to those offered at larger middle schools across the region.



Q: How will this affect families with children in multiple grade levels?

A: Some families may have children at more than one school site. The district will provide boundary maps, site tours, and transition supports to help families navigate the change.

Q: Will teachers and staff be impacted?

A: Teacher and staff assignments will likely shift as we transition to new grade-level configurations. The district is committed to a fair, transparent, and supportive process. We will work closely with our union partners to ensure all decisions honor collective bargaining agreements and are made with fairness and consistency. Our goal is to provide clear communication, minimize disruption, and support our educators and staff as they make these transitions because their stability and success directly benefit our students.

Q: When will boundaries and student assignments be finalized?

A: Boundary decisions will be developed in the coming months, taking into account existing schools, enrollment numbers, and improved transportation. Final maps and assignments will be shared immediately upon finalization. Our goal is to communicate this information on or before January 1st, 2026.

Q: Will transportation be affected?

A: Transportation needs will be reviewed as part of the reconfiguration. Updated routes and services will be communicated once new boundaries and sites are finalized.

Q: Will facilities be improved before the transition?

A: Yes. In addition to current bond projects, facilities modernization will ensure that reconfigured schools are updated, safe, and ready for students, teachers, and staff.

Q: Will the district provide support to students during this transition?

A: We are committed to helping students feel safe, supported, and connected. The district will provide orientation activities, peer mentorship opportunities, and counseling support. Teachers and staff will also receive training and resources to help students adjust socially and emotionally to their new school environments.

Q: How will families, teachers, staff, and the community be involved in the process?

A: The district will hold community engagement meetings, site walks, and share regular updates. Feedback will help shape transitions and support plans.



GATEWAY UNIFIED SCHOOL DISTRICT IS REIMAGINING THE FUTURE OF OUR DISTRICT WITH BOLD INVESTMENTS THAT CREATE EXCEPTIONAL LEARNING ENVIRONMENTS FOR EVERY STUDENT.

AT GRAND OAKS ELEMENTARY, FAMILIES WILL SEE A TRANSFORMED CAMPUS WITH EASIER PARENT-STUDENT PICKUP, FRESH LANDSCAPING, AND AN INSPIRING NEW TK KINDER CENTER FEATURING FIVE MODERN CLASSROOMS, A MULTI-PURPOSE SPACE FOR EXPLORATION, AND EXPANDED PLAY AREAS THAT SPARK IMAGINATION AND CONNECTION.

AT SHASTA LAKE MIDDLE SCHOOL, OUR DISTRICT IS UNITING STUDENTS IN A DYNAMIC HUB FOR ACADEMICS, ATHLETICS, CLUBS, AND CAREER TECHNICAL EDUCATION. A STRIKING TWO-STORY BUILDING WITH STATE-OF-THE-ART CLASSROOMS, FAMILY MEETING SPACES, AND A CENTRAL COURTYARD WILL BECOME THE CROWN JEWEL OF THE CAMPUS, COMPLEMENTED BY A FUTURE ALL-WEATHER TRACK TO ELEVATE ATHLETICS AND COMMUNITY EVENTS.

AT RIVER RIDGE ELEMENTARY, HOME OF THE OTTERS, WE ARE CREATING A VIBRANT TK-4 CAMPUS AT THE FORMER GATEWAY LEARNING CENTER, COMPLETE WITH COLORFUL MURALS CELEBRATING OUR MASCOT, NEW PLAY STRUCTURES, EXPANDED PARKING, AND A FULL-CAMPUS RENOVATION THAT WILL WELCOME FAMILIES AND DRAW NEW STUDENTS TO OUR DISTRICT.

TOGETHER, THESE PROJECTS EMBODY OUR VISION: SCHOOLS THAT ARE MODERN, WELCOMING, AND BUILT TO INSPIRE LEARNING, COLLABORATION, AND PRIDE FOR GENERATIONS TO COME.