



East Lyme High School Profile

2025-2026

30 Chesterfield Road
East Lyme, CT 06333

Phone: (860) 739-6946
Fax: (860) 691-4623

CEEB # 070177
www.eastlymeschools.org

Mission

The East Lyme High School experience prepares students academically, emotionally, and socially to be positive forces in the world and to live responsible, purposeful, and healthy lives.

The School

East Lyme High School is a four-year comprehensive public high school offering curricular and co-curricular programs to 896 students in grades nine-twelve. Accredited through the New England Association of Schools and Colleges, the school offers an extensive range of courses in college and career preparation. East Lyme High School employs six school counselors and approximately 110 faculty.

The Community

East Lyme High School rests in a residential community of 18,929 with its students residing in the towns of East Lyme, Niantic and Salem. Located in New London County along the shoreline, the school is equidistant from New Haven and Providence, RI and is easily accessible via Interstate 95.

Pathways

The goals of the Pathways Programs at ELHS are to advance student learning with community-based experiences, increase capacity in the Career and Technical Education programming, and support students in their post-secondary learning and career choices.

School Counselors

Elizabeth Maiese, A-Cas, CIL
elizabeth.maiese@elpsk12.org

David Willis, Cat-Gloc
david.willis@elpsk12.org

Jaclyn Sullivan, Glov-Li
jaclyn.sullivan@elpsk12.org

Christy Bryant, Lo-Rod
christy.bryant@elpsk12.org

Haley Stites, Rom- Sek
haley.stites@elpsk12.org

Nadine Barnes, S-Z
nadine.barnes@elpsk12.org

Mr. Jeffrey Newton
Superintendent

Counseling Office x-5580

Mr. Henry Kydd
Principal

Registrar-x-5512

School Highlights

- State Open Title- Boys Outdoor Track and Field
- Second place overall in the state- Eastern CT Math League
- Ranked #2 in Niche Best High Schools and High School Teachers in New London County
- Three –time Halo Award winner in CT in 2025
- Ranked #3 2025 Niche Best College Prep Public Schools in New London County
- Ranked 3rd in 2023 US News and World Reports Norwich, CT Metro Area High Schools
- Two first place winners at the State DECA conference

Graduation Requirements and Career Concentrations

Credit Requirements

English.....4.0
 Social Studies...3.5
 Math.....3.0
 Science.....3.0
 Language.....2.0
 PE/Health.....2.0
 Fine Arts.....1.0
 Vocational Ed..1.0
 Electives.....4.0
 Mastery Experience...1.0

Course Levels

AP- Advanced Placement
 H - Honors
 *ADV CCP – Advanced College and Career Preparatory
 *CCP - College and Career Preparatory
 *formerly named A and B level
 Additional information can be found in our Program of Studies on the ELHS website.

Career Concentrations

- Allied Health
- Broadcasting
- Business
- Computer Science
- Education
- Hospitality
- International Studies
- Manufacturing
- Performing Arts
- Print/Digital Communications
- Public Safety
- STEM
- Visual Arts
- World Languages and Cultures

25 Total Credits to Graduate

AP Classes Offered

Biology, Calculus AB, Calculus BC, Chemistry, Computer Science, Environmental Science, Government, Language & Composition, Literature & Composition, Mobile Computer Science, Music Theory, Physics 1 & 2, Psychology, Research, Seminar, Statistics, Studio Art, US History, World History

UConn ECE Courses Offered

Applied Mechanics, Calculus BC, Creative Writing II, EMT Training , English 12 1004, English 12 1007, French V, German IV, Human Development, Medical Terminology, Physics 1 & 2, Popular Music, Public Speaking, Spanish V

Honors Classes Offered

Algebra II, Anatomy/Physiology, Astronomy, Band, Biology, Catering and Hospitality, Chemistry, Concert Choir, Digital Film, Digital Journalism, English 10, Foundations of Calculus, French, Geometry, German, Graphics, Human Development, Journalism, Orchestra, Pre-Calculus, Spanish String Ensemble, Studio Art, Trigonometry

College Partnerships and Special Programs

University of Connecticut Early College Experience (ECE)- allows motivated students to take UCONN courses at their high schools for both high school and college credit.

New London Scholars Program- allows students to take entry level college courses on the Connecticut College campus.

High School Partnership (HSP)- allows students to take entry level college courses on the Three Rivers Community College campus.

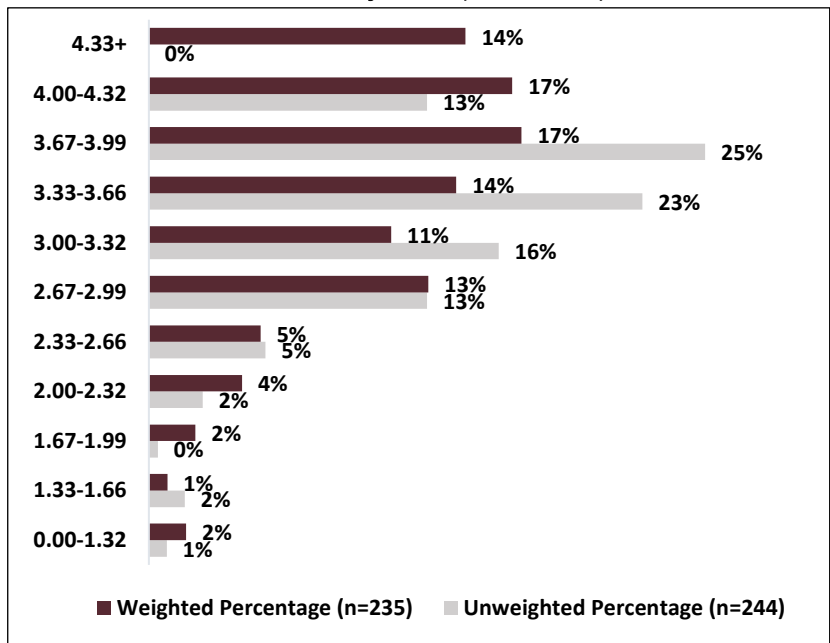
Independent Study- allows the student the opportunity to study a subject beyond what is available within the present curriculum. The student will design a plan, timeline and curriculum with an overseeing teacher who will assess them on a pass/fail basis.

Interpreting the Academic Record

Grading System

		Cumulative GPA	Weighted GPA			
			AP/ECE (x1.15)	Honors (x1.1)	ADV CCP (x1.05)	CCP (x1.0)
A+	97-100	4.33	4.98	4.76	4.55	4.33
A	93-96	4.0	4.6	4.4	4.2	4.0
A-	90-92	3.67	4.22	4.04	3.85	3.67
B+	87-89	3.33	3.83	3.66	3.50	3.33
B	83-86	3.00	3.45	3.30	3.15	3.00
B-	80-82	2.67	3.07	2.94	2.80	2.67
C+	77-79	2.33	2.68	2.56	2.45	2.33
C	73-76	2.00	2.30	2.20	2.10	2.00
C-	70-72	1.67	1.92	1.84	1.75	1.67
D+	67-69	1.33	1.53	1.46	1.40	1.33
D	63-66	1.0	1.15	1.1	1.05	1.0
D-	60-62	0.67	0.77	0.74	0.70	0.67
F	Below 60	0.0	0.0	0.0	0.0	0.0
WF		0.0	0.0	0.0	0.0	0.0

GPA Distribution – Class of 2026 (June 2025)



Both an unweighted and weighted GPA are calculated for each student after the first six semesters and after each subsequent semester. The unweighted, cumulative GPA is a simple average of all courses on a 4.0 scale. The weighted GPA is based on grades earned in leveled classes

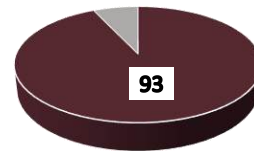
East Lyme High School publishes both an unweighted and weighted GPA and does not calculate class rank. The above graphic represents individual students' overall level of academic performance in relation to their class. Students who transfer into the school receive a weighted GPA after completing four semesters.

School Accomplishments and 2025 AP Test Data

Class of:	2025	2024	2023	2022	2021
Four-year Colleges	73%	70%	75%	71%	70%
Two-year colleges	10%	14%	14%	15%	12%
NMSQT semi-finalists/finalists	2/2	4/4	2/2	3/1	4/4
SAT Reading Mean	565	555	577	596	573
SAT Math Mean	521	547	555	583	563

The Class of 2025 had one member matriculate to Ivy League Colleges, and a member hired at Electric Boat

2025 AP Scores



Percentage of Students with 3+

Total AP Students	275
Number of Exams	556

Percentile Score on Connecticut SAT School Day and Next Generation Science Standards- 92.9%

Class of 2025 Attending Colleges

Albertus Magnus College, Appalachian State University, Bentley University, Berklee College of Music, Binghamton University, Boston College, Boston University, Bridgewater State University, Brown University, Bryant University, Case Western Reserve University, Central Connecticut State University, Citadel Military College of South Carolina, CT State Community, Eastern Connecticut State University, Endicott College, Fashion Institute of Technology, Flagler College, Hamilton College, Hilbert College, Iona University, Ithaca College, Johns Hopkins University, Johnson & Wales University-Providence, Louisiana State University, Merrimack College, Mississippi State University, Nichols College, Northeastern University, Nova Southeastern University, Porter & Chester Institute, Providence College, Purdue University, Quinnipiac University, Rensselaer Polytechnic Institute, TIGI Creative School, Roanoke College, Roger Williams University, Rose Bruford College, Rutgers University, Sacred Heart University, Salve Regina University, School of the Art Institute of Chicago, Southern Connecticut State University, Stetson University, Stonehill College, Suffolk University, Temple University, Texas Tech University, The University of Tampa, Trinity College, Tufts University, United States Merchant Marine Academy, University at Albany, SUNY, University at Buffalo, University of Alaska Fairbanks, University of Bridgeport, University of Connecticut, University of Delaware, University of Florida, University of Hartford, University of Illinois at Urbana-Champaign, University of Maine at Farmington, University of Maryland, University of Massachusetts, University of Miami, University of Michigan, University of New England, University of New Hampshire, University of New Haven, University of North Carolina at Charlotte, University of Rhode Island, University of Saint Joseph, University of Vermont, University of Wisconsin, West Virginia University, Worcester Polytechnic Institute