

# SCHOLARSHIPS & BURSARIES





# STUDENT AND PARENT GUIDE

For 11+ entry in September 2026

## CONTENTS

- 3 St Catherine's Scholarships and Bursaries
- 4 Academic Scholarships and Art Scholarships
- 5 Drama Scholarships
- 6 Sport Scholarships
- 8 Music Scholarships
- 9 Key dates

# ST CATHERINE'S SCHOLARSHIPS

## 11+ (YEAR 7)

St Catherine's School Scholarships are awarded to pupils who show exceptional talent and potential in Academics, Art, Drama, Music, and Sport. Awards are available on entry at 11+ (Year 7).

Scholars receive extra benefits, support and opportunities to develop their skills, as well as acting as role models for their peers and the wider school.

St Catherine's scholarships may be honorary or carry a fee reduction. Candidates may apply for more than one scholarship, with fee remission applied with the first award and any subsequent scholarships being titular in nature.

Parents can apply to have a scholarship augmented by a bursary, subject to means-testing.

It has been a long-standing tradition at St Catherine's that parents who do not require financial assistance may accept their child's scholarship award on an honorary basis. This allows the student to be recognised for their achievements, but the funds can be re-allocated to our bursary programme.

## BURSARIES

Parents with limited resources may apply for an entry means-tested bursary at 11+ to augment a scholarship.

A criterion for bursary consideration is demonstrating significant financial need. All applicants must provide detailed information about their household income, assets, and expenses to determine their eligibility. The bursary committee will only consider families with limited financial resources and an inability to afford the cost of education.

If you would like to find out more about a bursary, please contact the Admissions team on 01483 899609, or [admissions@stcatherines.info](mailto:admissions@stcatherines.info)





## ACADEMIC SCHOLARSHIPS

All candidates are automatically considered for an Academic Scholarship, which is determined by their entry assessments - there is no additional scholarship assessment.

Academic scholarships are awarded for the duration of the student's time at St Catherine's; they are subject to annual monitoring and review at key stages, especially Year 9 into Year 10, and Year 11 into Lower Sixth.

---

## ART SCHOLARSHIPS

The Art Scholarship is awarded to students applying to the school for Year 7 entry and will be awarded until the end of Year 9, where it will be reviewed and re-awarded if the student continues with Art GCSE and has continued to show passion and commitment to the subject.

## ASSESSMENT

Candidates are required to provide a digital submission of five works (one per page) in PDF format, along with a letter of recommendation from a teacher or art specialist (e.g. Head of Art) at their current school. Candidates will be invited for interview based on the quality and variety of work submitted along with the recommendation letter.

On the Scholarship Interview Day, candidates will participate in a drawing task lasting approximately two hours, during which they will be interviewed and given the opportunity to discuss their work and passion for art.

Candidates will also be asked to bring with them a physical portfolio or work that they feel best expresses their range of skills and use of media. This should be a curated selection of work that has been created in the last two years only. Their portfolio will be reviewed on the day.

## PROVISION FOR SCHOLARS

- Tutorial with the Artist in Residence every two weeks
- Work created with the Artist in Residence to be displayed at the end of year department exhibition
- Yearly trip to an exhibition at one of the London galleries
- Opportunities to come to any workshops that the department are running

# DRAMA SCHOLARSHIPS

We welcome pupils who show promise, potential and passion for the dramatic arts. This drama award is a demonstration of our belief in the student.

Naturally, commitment to the subject will need to be outstanding, and we would expect scholars to be fully involved in the co-curricular productions and clubs we offer, either on stage as a performer or backstage as part of our technical, design, or stage management team.

Specific highlights for Drama Scholars include invitation to a varied programme of theatre-related workshops and trips as well as an annual Drama Scholars' Event.

## ASSESSMENT

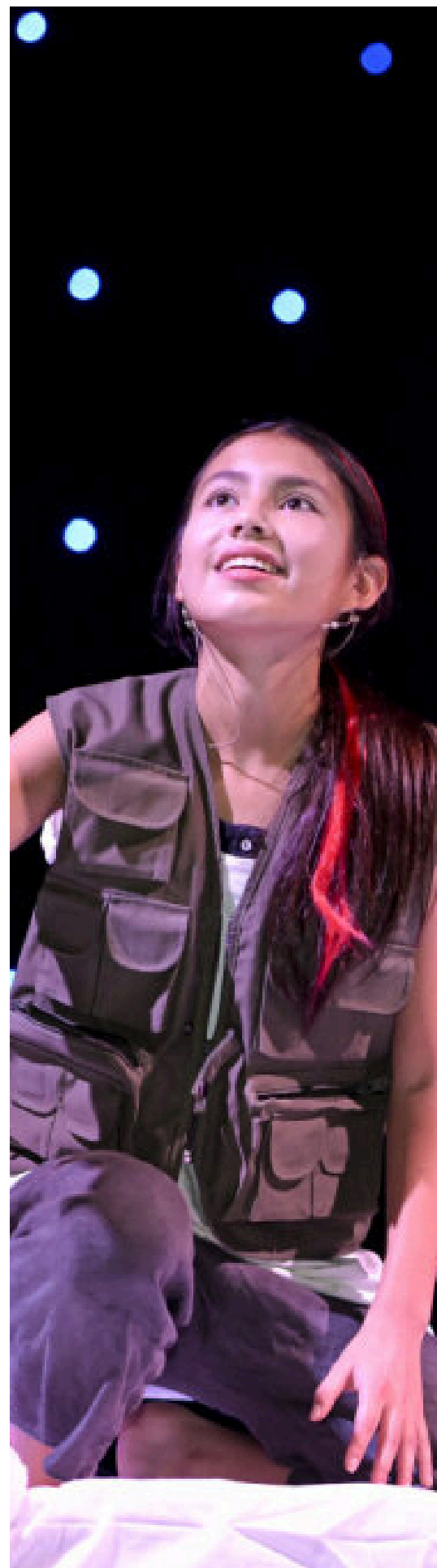
Candidates for a Drama Scholarship will be required to send in a recording of a short monologue from a play of their own choice (no excerpts from novels or poetry). They will then be invited to attend a half-day assessment where they will join a group workshop, for which no preparation is necessary. They will then perform a further prepared monologue of their own choice of no more than three minutes in length. It is not necessary to be in costume or bring props, but students may bring simple items if they wish.

Finally, candidates will take part in a brief seminar talk with the Director of Drama to discuss the group's favourite productions and recent experience. The assessments are designed for candidates to demonstrate their ability, interest and potential. There are no requirements in terms of Acting grades.

There is the expectation that the candidate is already participating in Drama or other Arts activities outside of regular school lessons. Candidates will be expected to be actively involved in the Drama co-curricular programme. Prior to Year 10, the scholarship would be reassessed to gauge suitability and interest in GCSE and A Level.

## EXPECTATIONS OF SCHOLARS

- Regular attendance at Scholars' events and production rehearsals
- The commitment to work as directors/co-directors, designers, or technical crew
- The ability to discuss Drama thoughtfully and perceptively
- The ability to work well with others in an open and supportive manner
- A willingness to try new things







## SPORT SCHOLARSHIPS

At St Catherine's we believe that sport has the power to inspire, to build confidence, and to shape character. Sport Scholarships are awarded to pupils entering Year 7 who demonstrate exceptional general sporting ability, not specific to one sport, but who demonstrate the athletic potential, resilience, leadership and determination to contribute to the School's main sports of Lacrosse, Netball, Swimming, Athletics, Tennis, Cricket.

Scholarships are awarded to recognise young athletes who show not only talent but who also show leadership, resilience, and the determination to succeed. They will be required to excel both in their chosen sports and in the wider life of the School.

A Sport Scholar is expected to contribute significantly to the School's sporting success, acting as a role model and upholding the highest standards of sportsmanship. We are looking for candidates who combine natural ability with a strong work ethic, a willingness to learn, and the drive to keep improving. Scholars lead by example, bringing energy and commitment to every match and training session. In return, they are supported and given the opportunities to achieve their full potential, both on the field and in the classroom.

The scholarship would run until the end of their Year 8, where it would be reviewed based on performance, commitment and passion.

## ASSESSMENT

The Scholarship Assessment Day is designed to give each candidate the chance to shine. It may include:

- Athletic evaluations – tests of speed, stamina, agility, and coordination
- Practical participation – individual and team activities to showcase technical ability, tactical awareness, and versatility
- Teamwork and leadership – opportunities to demonstrate communication, collaboration, and initiative
- Sportsmanship and attitude – resilience, discipline, enthusiasm, and respect for others
- Interview – a chance to share sporting achievements, ambitions, and how the candidate would contribute to the school's sporting programme

References from coaches, PE staff, or sporting organisations may also be considered in support of applications.

# EXPECTATIONS OF SCHOLARS

Our Sports Scholars are ambassadors of the School. They are expected to:

- Represent the School with pride and commitment in all School sports
- Maintain consistent dedication to training, preparation, and competition
- Inspire and support younger pupils, encouraging a strong sporting culture
- Demonstrate integrity, teamwork, and perseverance in all aspects of School life
- Balance sporting excellence with academic effort and personal growth

# BENEFITS

Sport Scholars enjoy a range of benefits, which may include:

- Opportunities to compete and excel at local, regional, and national level
- Expert support to ensure a healthy balance between sport and study

Being a Sport Scholar at St Catherine's is about more than talent; it is about character, ambition, and the willingness to give your best. The programme provides outstanding opportunities for athletic development while nurturing leadership, resilience, and teamwork - qualities that will serve scholars throughout their School life and beyond.





# MUSIC SCHOLARSHIPS

Music Scholarships may be awarded to candidates who demonstrate strong musical talent, a readiness to join in ensemble music-making, and good general musicality.

## ASSESSMENT

Candidates will be invited for audition and will be judged by the Director of Music and an adjudication panel. There is an expectation that the successful candidates will take Music GCSE.

## EXPECTATIONS OF SCHOLARS

As beacons of excellence, all Music Scholars are expected to make a full, active and willing contribution to music-making at St Catherine's.

Specifically, they are expected to take part in appropriate core activities:

- String Orchestra, progressing to Symphony Orchestra
- Wind Band, progressing to Concert Band and Symphony Orchestra
- Upper 3 Choir, Fourth Form Choir and Senior Choir

Dependent on the specialisms of the individual Scholars, they will be expected to audition for, or be invited to take part in, a selection of ensembles throughout their time at St Catherine's, including:

- Camerata (the School's Senior String Ensemble)
- Jazz Band
- Auditioned Middle School Choirs: Middle Chamber Choir and Middle Cantores
- Auditioned Senior School Choirs: Senior Chamber Choir and Senior Cantores

Further Music Awards which cover elements of music tuition, exam fees, and sheet music on a range of musical instruments including chapel organ and voice are available to pupils in the Senior School. Some are specifically for those wanting to take up instruments which tend not to be the popular choice of most students, but which contribute greatly to the impact and success of the School's musical ensembles, e.g. euphonium, double bass, viola, bassoon, French horn, and tuba. These particularly suit musical girls who want to make a strong contribution to School music. Award holders are expected to take part in the ensembles and choirs mentioned above, as applicable to their specialism. Auditions for Awards take place at the same time as Music Scholarship auditions.

Further details are available on request.



# KEY DATES

## ASSESSMENT

Your child must be registered for a place in order to apply for a scholarship. We encourage early registration where possible.

### FRIDAY 17<sup>TH</sup> OCTOBER

Closing date for applications. Candidates are automatically entered for Academic Scholarships upon registration.

### THURSDAY 6<sup>TH</sup> NOVEMBER

Drama and Music Scholarship Assessments

### FRIDAY 7<sup>TH</sup> NOVEMBER

Sport Scholarship Assessments

### SATURDAY 22<sup>ND</sup> NOVEMBER

Art Scholarship Assessments

All awards are conditional on a satisfactory standard being shown in entrance assessments.

For more information and application forms, please contact

E: [clare.woodgates@stcatherines.info](mailto:clare.woodgates@stcatherines.info)

T: +44 (0)1483 899609



## St Catherine's School BRAMLEY

### **St Catherine's School**

Station Road, Bramley, Guildford, GU5 0DF

Senior School Registrar +44(0)1483 899609

[admissions@stcatherines.info](mailto:admissions@stcatherines.info)

[www.stcatherines.info](http://www.stcatherines.info)



@stcatherinesbramley



St Catherine's School, Bramley



@stcatsbramley