

February 20, 2025

Will Wenzloff
 Hillsboro School District
 4901 SE Witch Hazel Road
 Hillsboro, Oregon 97123

Via e-mail: wenzlofw@hsd.or.k12.us

Regarding: Drinking Water Sampling Report
 Minter Bridge Elementary School Campus
 1750 SE Jacquelin Drive
 Hillsboro, OR 97123
 PBS Project 24013061 / 0002

Dear Mr. Wenzloff:

On December 14, 2024, and January 30, 2025, PBS Engineering and Environmental LLC (PBS) performed drinking water sampling at Minter Bridge Elementary School in Hillsboro, Oregon. Sampling included the main building, the stand-alone gymnasium, and the modular classroom building. The testing was requested by Hillsboro School District as part of their efforts to ensure that concentrations of lead in drinking water at the building remain below the Oregon Department of Education (ODE) action level of 15 parts per billion (ppb).

Fifty-nine samples were collected and delivered under chain of custody to Apex Laboratories in Tigard, Oregon for lead analysis. Two fixtures in the main building showed lead concentrations above 15 ppm after the first round of sampling. Fixture 006 was replaced and resampled. Fixture 021 was removed and the supply lines were capped. Drinking water from all fixtures on the campus now have lead concentrations below 15 ppb. The following tables list the results of the analysis. Results above 15 ppm are shown in bold.

Main Building – Round 1

Fixture Number	Sample Number	Location / Room No.	Results (ppb)
001	22390600-001KF24A	Kitchen pot filler faucet	7.39
002	22390600-002BF24A	Kitchen restroom sink faucet	4.91
003	22390600-003KF22B	Kitchen, triple prep sink – left faucet	3.25
004	22390600-004KF24A	Kitchen, triple prep sink – right faucet	5.98
005	22390600-005DW24A	Cafeteria drinking fountain	6.14
006	22390600-006BF24A	Boys locker room handwash sink	20.7
007		Girls locker room handwash basin – abandoned/capped	
008	22390600-008BF24A	Girls SW restroom handwash basin	1.29
009	22390600-009BF22B	Boys SW restroom bathroom sink - left	1.09
010	22390600-010WB24A	Kindergarten hallway water bottle filler	ND

Fixture Number	Sample Number	Location / Room No.	Results (ppb)
011	22390600-011DW22B	Kindergarten hallway drinking fountain - left	ND
012	22390600-012DW24A	Kindergarten hallway drinking fountain - right	ND
013	22390600-013BF24A	Boys SW restroom bathroom sink - right	0.592
014	22390600-014SF24A	Faculty break room sink	1.01
015	22390600-015WC24A	Faculty break room water cooler	ND
016	22390600-016BF24A	Womens faculty restroom sink	1.94
017	22390600-017BF24A	Mens faculty restroom sink	1.61
018	22390600-018BF24A	Hall at kindergarten restrooms, handwash sink	0.812
019	22390600-019DW24A	Room 16, east sink drinking fountain	5.37
020	22390600-020CF24A	Room 16, east sink faucet	12.3
021	22390600-021DW24A	Room 16, west sink drinking fountain - REMOVED	28.9
022	22390600-022CF24A	Room 16, west sink faucet	8.85
023	22390600-023NS24A	Health room sink	1.47
024	22390600-024SF24A	Office work room sink faucet	5.47
025	22390600-025DW24A	Drinking fountain outside of east library restroom	2.35
026	22390600-026BF24A	East library gender neutral restroom	0.207
027	22390600-027DW24A	East classroom pod (5th/6th) activity area, east sink drinking fountain	3.30
028	22390600-028CF24A	East classroom pod (5th/6th) activity area, east sink faucet	3.30
029	22390600-029DW24A	East classroom pod (5th/6th) activity area, west sink drinking fountain	3.69
030	22390600-030CF24A	East classroom pod (5th/6th) activity area, west sink faucet	3.23
031	22390600-031DW24A	South classroom pod (3rd/4th) activity area, south sink drinking fountain	2.87
032	22390600-032CF24A	South classroom pod (3rd/4th) activity area, south sink faucet	2.89
033	22390600-033DW24A	South classroom pod (3rd/4th) activity area, north sink drinking fountain	5.27
034	22390600-034CF24A	South classroom pod (3rd/4th) activity area, north sink faucet	3.16
035	22390600-035DW24A	Drinking fountain outside of south girls restroom	5.31
036	22390600-036BF24A	South girls restroom – left sink	0.322
037	22390600-037BF24A	South girls restroom – right sink	0.393
038	22390600-038BF24A	South boys restroom – left sink	0.610
039	22390600-039BF24A	South boys restroom – right sink	0.419
040	22390600-040DW24A	West classroom pod (1st/2nd) activity area, west sink drinking fountain	4.64
041	22390600-041CF24A	West classroom pod (1st/2nd) activity area, west sink faucet	1.85
042	22390600-042DW24A	West classroom pod (1st/2nd) activity area, east sink drinking fountain	6.77
043	22390600-043CF24A	West classroom pod (1st/2nd) activity area, east sink faucet	3.35
044	22390600-044CF24A	Library, sink at center post, sink faucet	10.1
045	22390600-045DW24A	Library sink north, drinking fountain	12.7
046	22390600-046CF24A	Library sink north, sink faucet	0.579

ND = no lead detected

Main Building – Round 2

Fixture Number	Sample Number	Location / Room No.	Results (ppb)
006	22390600-006BF25A	Boys locker room handwash sink – First Draw (after fixture was replaced)	6.20
006	22390600-006BF25B	Boys locker room handwash sink – 30-second flush (after fixture was replaced)	2.00

ND = no lead detected

Gymnasium

Fixture Number	Sample Number	Location / Room No.	Results (ppb)
001	22390604-001WB24A	Lobby – water bottle filler	ND
002	22390604-002DW24A	Lobby – drinking fountain, left	ND
003	22390604-003DW24A	Lobby – drinking fountain, right	ND
004	22390604-004BF24A	Restroom sink faucets, left to right (1)	ND
005	22390604-005BF24A	Restroom sink faucets, left to right (2)	ND
006	22390604-006BF24A	Restroom sink faucets, left to right (3)	0.501
007	22390604-007BF24A	Restroom sink faucets, left to right (4)	ND
008	22390604-008BF24A	Private restroom sink faucet	ND

ND = no lead detected

Modular Classroom

Fixture Number	Sample Number	Location / Room No.	Results (ppb)
001	22390603-001CF24A	Left Classroom (Room B) – classroom faucet	ND
002	22390603-002BF24A	Left Classroom (Room B) - restroom sink faucet	ND
003	22390603-003CF24A	Right Classroom (Room A) – classroom faucet	ND
004	22390603-004BF24A	Right Classroom (Room A) - restroom sink faucet	ND

ND = no lead detected

Please refer to the attached fixture location drawings and laboratory analytical report for additional details. The laboratory analytical results are reported in micrograms per liter (µg/L), a unit of measure that is equivalent to ppb.

Sampling methodology and the interpretation of laboratory results were based on the Environmental Protection Agency guidance document titled *3Ts for Reducing Lead in Drinking Water in Schools*. Following this guideline, PBS collected first draw samples from each test location. First draw samples consist of the first 250 milliliters (mL) of water drawn from a fixture after the water has been sitting stagnant for at least 8 hours. The 3Ts' sampling protocol specifying 250-mL samples is designed to maximize the likelihood that the highest concentrations of lead in water used for consumption are identified.

Drinking Water Sampling Report
Minter Bridge Campus
February 20, 2025
Page 4 of 4

Please feel free to contact me at 503.515.4726 or voeller@pbsusa.com with any questions or comments.

Sincerely,

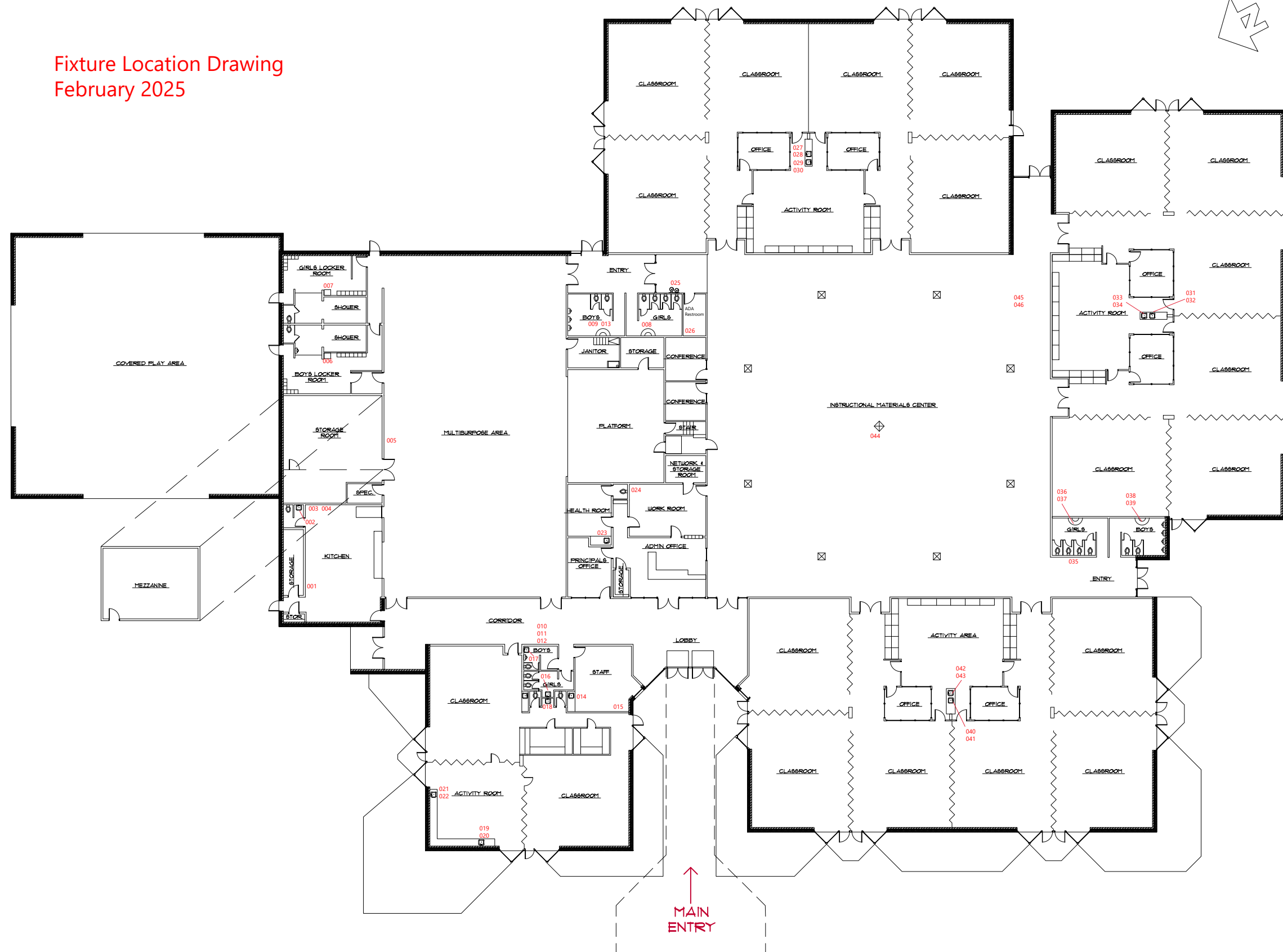
Dale Voeller, CHMM, CSP
Senior Project Manager

Attachments: Sample Location Drawings
Laboratory Analytical Report

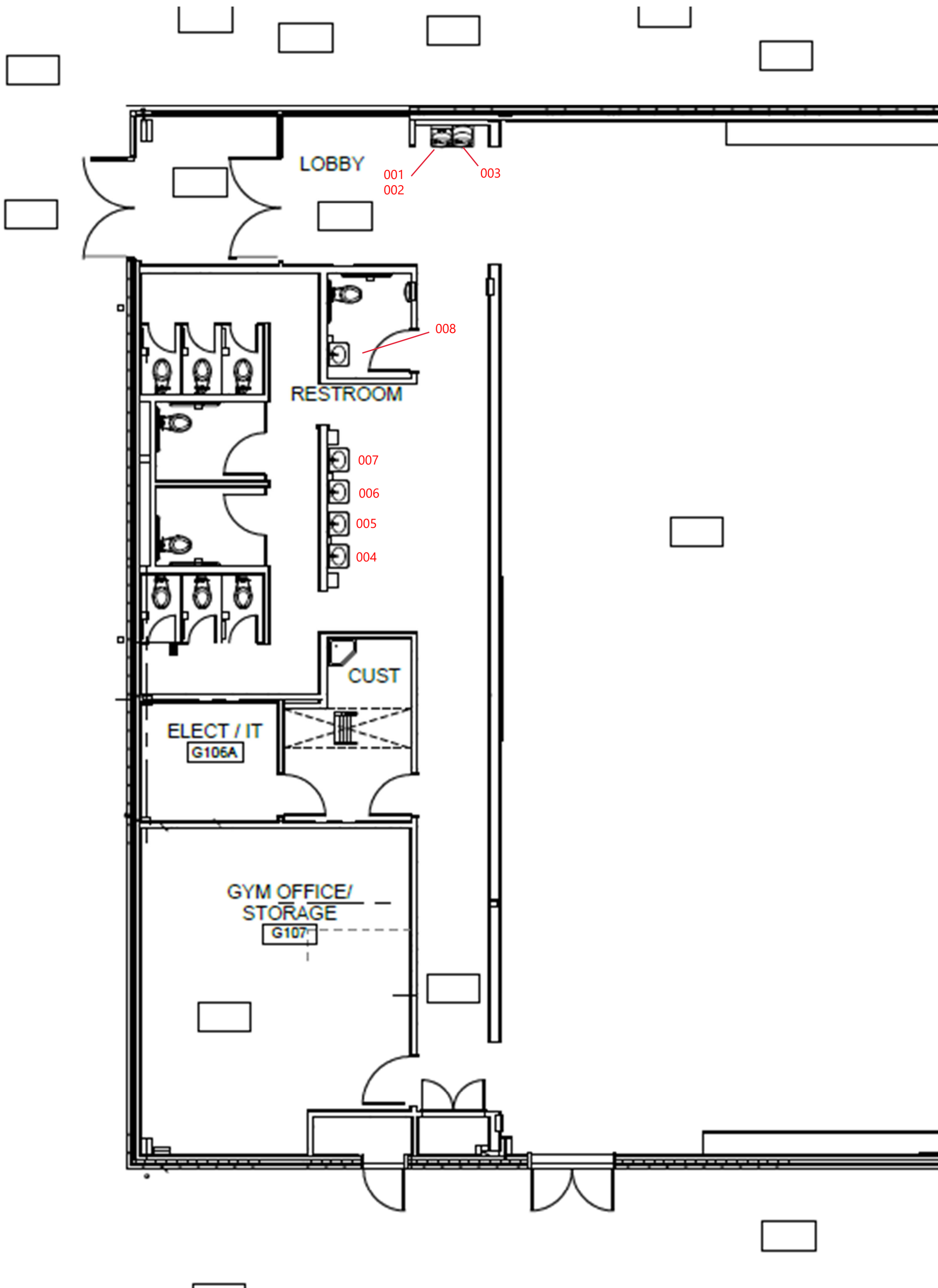
Fixture Location Drawing
February 2025

208

MINTER BRIDGE ELEMENTARY SCHOOL
SCHOOL BUILDING
MAIN LEVEL PLAN



Minter Bridge ES
Gymnasium Building
Drinking Water Fixture Location Drawing
April 14, 2021



Laboratory Analytical Reports

Main Building



ANALYTICAL REPORT

Apex Laboratories, LLC
6700 S.W. Sandburg Street
Tigard, OR 97223
503-718-2323
ORELAP ID: OR100062

Friday, January 17, 2025
Dale Voeller
PBS Engineering and Environmental
4412 S Corbett Ave
Portland, OR 97239

RE: A4L1777 - Hillsboro School District - Minter Bridge ES/24013061

Thank you for using Apex Laboratories. We greatly appreciate your business and strive to provide the highest quality services to the environmental industry.

Enclosed are the results of analyses for work order A4L1777, which was received by the laboratory on 12/27/2024 at 2:04:00PM.

If you have any questions concerning this report or the services we offer, please feel free to contact me by email at: jwoodcock@apex-labs.com, or by phone at 503-718-2323.

Please note: All samples will be disposed of within 30 days of sample receipt, unless prior arrangements have been made.

Cooler Receipt Information		
<p><u>Acceptable Receipt Temperature is less than, or equal to, 6 degC (not frozen), or received on ice the same day as sampling.</u></p> <p>(See Cooler Receipt Form for details)</p>		
<p>Default Cooler</p>	<p>17.0</p>	<p>degC</p>

This Final Report is the official version of the data results for this sample submission, unless superseded by a subsequent, labeled amended report. All other deliverables derived from this data, including Electronic Data Deliverables (EDDs), CLP-like forms, client requested summary sheets, and all other products are considered secondary to this report.



Apex Laboratories

The results in this report apply to the samples analyzed in accordance with the chain of custody document(s) and updated by any subsequent written communications. This analytical report must be reproduced in its entirety.

Jason Woodcock, Project Manager



ANALYTICAL REPORT

Apex Laboratories, LLC

6700 S.W. Sandburg Street
Tigard, OR 97223
503-718-2323
ORELAP ID: OR100062

<u>PBS Engineering and Environmental</u> 4412 S Corbett Ave Portland, OR 97239	Project: <u>Hillsboro School District</u> Project Number: Minter Bridge ES/24013061 Project Manager: Dale Voeller	Report ID: A4L1777 - 01 17 25 1050
---	--	---

ANALYTICAL REPORT FOR SAMPLES

SAMPLE INFORMATION

Client Sample ID	Laboratory ID	Matrix	Date Sampled	Date Received
22390600-001KF24A	A4L1777-01	Drinking Water	12/14/24 00:00	12/27/24 14:04
22390600-002BF24A	A4L1777-02	Drinking Water	12/14/24 00:00	12/27/24 14:04
22390600-003KF22B	A4L1777-03	Drinking Water	12/14/24 00:00	12/27/24 14:04
22390600-004KF24A	A4L1777-04	Drinking Water	12/14/24 00:00	12/27/24 14:04
22390600-005DW24A	A4L1777-05	Drinking Water	12/14/24 00:00	12/27/24 14:04
22390600-006BF24A	A4L1777-06	Drinking Water	12/14/24 00:00	12/27/24 14:04
22390600-008BF24A	A4L1777-07	Drinking Water	12/14/24 00:00	12/27/24 14:04
22390600-009BF22B	A4L1777-08	Drinking Water	12/14/24 00:00	12/27/24 14:04
22390600-010WB24A	A4L1777-09	Drinking Water	12/14/24 00:00	12/27/24 14:04
22390600-011DW22B	A4L1777-10	Drinking Water	12/14/24 00:00	12/27/24 14:04
22390600-012DW24A	A4L1777-11	Drinking Water	12/14/24 00:00	12/27/24 14:04
22390600-013BF24A	A4L1777-12	Drinking Water	12/14/24 00:00	12/27/24 14:04
22390600-014SF24A	A4L1777-13	Drinking Water	12/14/24 00:00	12/27/24 14:04
22390600-015WC24A	A4L1777-14	Drinking Water	12/14/24 00:00	12/27/24 14:04
22390600-016BF24A	A4L1777-15	Drinking Water	12/14/24 00:00	12/27/24 14:04
22390600-017BF24A	A4L1777-16	Drinking Water	12/14/24 00:00	12/27/24 14:04
22390600-018BF24A	A4L1777-17	Drinking Water	12/14/24 00:00	12/27/24 14:04
22390600-019DW24A	A4L1777-18	Drinking Water	12/14/24 00:00	12/27/24 14:04
22390600-020CF24A	A4L1777-19	Drinking Water	12/14/24 00:00	12/27/24 14:04
22390600-021DW24A	A4L1777-20	Drinking Water	12/14/24 00:00	12/27/24 14:04
22390600-022CF24A	A4L1777-21	Drinking Water	12/14/24 00:00	12/27/24 14:04
22390600-023NS24A	A4L1777-22	Drinking Water	12/14/24 00:00	12/27/24 14:04
22390600-024SF24A	A4L1777-23	Drinking Water	12/14/24 00:00	12/27/24 14:04
22390600-025DW24A	A4L1777-24	Drinking Water	12/14/24 00:00	12/27/24 14:04
22390600-026BF24A	A4L1777-25	Drinking Water	12/14/24 00:00	12/27/24 14:04
22390600-027DW24A	A4L1777-26	Drinking Water	12/14/24 00:00	12/27/24 14:04
22390600-028CF24A	A4L1777-27	Drinking Water	12/14/24 00:00	12/27/24 14:04
22390600-029DW24A	A4L1777-28	Drinking Water	12/14/24 00:00	12/27/24 14:04
22390600-030CF24A	A4L1777-29	Drinking Water	12/14/24 00:00	12/27/24 14:04
22390600-031DW24A	A4L1777-30	Drinking Water	12/14/24 00:00	12/27/24 14:04
22390600-032CF24A	A4L1777-31	Drinking Water	12/14/24 00:00	12/27/24 14:04
22390600-033DW24A	A4L1777-32	Drinking Water	12/14/24 00:00	12/27/24 14:04

Apex Laboratories

The results in this report apply to the samples analyzed in accordance with the chain of custody document(s) and updated by any subsequent written communications. This analytical report must be reproduced in its entirety.



ANALYTICAL REPORT

Apex Laboratories, LLC

6700 S.W. Sandburg Street
Tigard, OR 97223
503-718-2323
ORELAP ID: OR100062

<u>PBS Engineering and Environmental</u> 4412 S Corbett Ave Portland, OR 97239	Project: <u>Hillsboro School District</u> Project Number: Minter Bridge ES/24013061 Project Manager: Dale Voeller	Report ID: A4L1777 - 01 17 25 1050
---	--	---

ANALYTICAL REPORT FOR SAMPLES

SAMPLE INFORMATION

Client Sample ID	Laboratory ID	Matrix	Date Sampled	Date Received
22390600-034CF24A	A4L1777-33	Drinking Water	12/14/24 00:00	12/27/24 14:04
22390600-035DW24A	A4L1777-34	Drinking Water	12/14/24 00:00	12/27/24 14:04
22390600-036BF24A	A4L1777-35	Drinking Water	12/14/24 00:00	12/27/24 14:04
22390600-037BF24A	A4L1777-36	Drinking Water	12/14/24 00:00	12/27/24 14:04
22390600-038BF24A	A4L1777-37	Drinking Water	12/14/24 00:00	12/27/24 14:04
22390600-039BF24A	A4L1777-38	Drinking Water	12/14/24 00:00	12/27/24 14:04
22390600-040DW24A	A4L1777-39	Drinking Water	12/14/24 00:00	12/27/24 14:04
22390600-041CF24A	A4L1777-40	Drinking Water	12/14/24 00:00	12/27/24 14:04
22390600-042DW24A	A4L1777-41	Drinking Water	12/14/24 00:00	12/27/24 14:04
22390600-043CF24A	A4L1777-42	Drinking Water	12/14/24 00:00	12/27/24 14:04
22390600-044CF24A	A4L1777-43	Drinking Water	12/14/24 00:00	12/27/24 14:04
22390600-045DW24A	A4L1777-44	Drinking Water	12/14/24 00:00	12/27/24 14:04
22390600-046CF24A	A4L1777-45	Drinking Water	12/14/24 00:00	12/27/24 14:04

Apex Laboratories

The results in this report apply to the samples analyzed in accordance with the chain of custody document(s) and updated by any subsequent written communications. This analytical report must be reproduced in its entirety.

Jason Woodcock, Project Manager



ANALYTICAL REPORT

Apex Laboratories, LLC

6700 S.W. Sandburg Street
Tigard, OR 97223
503-718-2323
ORELAP ID: OR100062

PBS Engineering and Environmental 4412 S Corbett Ave Portland, OR 97239	Project: Hillsboro School District Project Number: Minter Bridge ES/24013061 Project Manager: Dale Voeller	Report ID: A4L1777 - 01 17 25 1050
--	---	---

ANALYTICAL SAMPLE RESULTS

Total Metals in Drinking Water by EPA 200.8 (ICPMS)

Analyte	Sample Result	Detection Limit	Reporting Limit	Units	Dilution	Date Analyzed	Method Ref.	Notes
22390600-001KF24A (A4L1777-01)				Matrix: Drinking Water				
<u>Batch: 25A0404</u>								
Lead	7.39	---	0.200	ug/L	1	01/15/25 16:14	EPA 200.8	
22390600-002BF24A (A4L1777-02)				Matrix: Drinking Water				
<u>Batch: 25A0404</u>								
Lead	4.91	---	0.200	ug/L	1	01/15/25 16:16	EPA 200.8	
22390600-003KF22B (A4L1777-03)				Matrix: Drinking Water				
<u>Batch: 25A0404</u>								
Lead	3.25	---	0.200	ug/L	1	01/15/25 16:18	EPA 200.8	
22390600-004KF24A (A4L1777-04)				Matrix: Drinking Water				
<u>Batch: 25A0404</u>								
Lead	5.98	---	0.200	ug/L	1	01/15/25 16:20	EPA 200.8	
22390600-005DW24A (A4L1777-05)				Matrix: Drinking Water				
<u>Batch: 25A0408</u>								
Lead	6.14	---	0.200	ug/L	1	01/15/25 18:21	EPA 200.8	
22390600-006BF24A (A4L1777-06)				Matrix: Drinking Water				
<u>Batch: 25A0408</u>								
Lead	20.7	---	0.200	ug/L	1	01/15/25 18:26	EPA 200.8	
22390600-008BF24A (A4L1777-07)				Matrix: Drinking Water				
<u>Batch: 25A0408</u>								
Lead	1.29	---	0.200	ug/L	1	01/15/25 18:28	EPA 200.8	
22390600-009BF22B (A4L1777-08)				Matrix: Drinking Water				
<u>Batch: 25A0408</u>								
Lead	1.09	---	0.200	ug/L	1	01/15/25 18:30	EPA 200.8	
22390600-010WB24A (A4L1777-09)				Matrix: Drinking Water				
<u>Batch: 25A0408</u>								
Lead	ND	---	0.200	ug/L	1	01/15/25 18:32	EPA 200.8	

Apex Laboratories

The results in this report apply to the samples analyzed in accordance with the chain of custody document(s) and updated by any subsequent written communications. This analytical report must be reproduced in its entirety.

Jason Woodcock, Project Manager



ANALYTICAL REPORT

Apex Laboratories, LLC

6700 S.W. Sandburg Street
Tigard, OR 97223
503-718-2323
ORELAP ID: OR100062

PBS Engineering and Environmental 4412 S Corbett Ave Portland, OR 97239	Project: Hillsboro School District Project Number: Minter Bridge ES/24013061 Project Manager: Dale Voeller	Report ID: A4L1777 - 01 17 25 1050
--	---	---

ANALYTICAL SAMPLE RESULTS

Total Metals in Drinking Water by EPA 200.8 (ICPMS)

Analyte	Sample Result	Detection Limit	Reporting Limit	Units	Dilution	Date Analyzed	Method Ref.	Notes
Matrix: Drinking Water								
22390600-011DW22B (A4L1777-10)								
<u>Batch: 25A0408</u>								
Lead	ND	---	0.200	ug/L	1	01/15/25 18:34	EPA 200.8	
Matrix: Drinking Water								
22390600-012DW24A (A4L1777-11)								
<u>Batch: 25A0408</u>								
Lead	ND	---	0.200	ug/L	1	01/15/25 18:41	EPA 200.8	
Matrix: Drinking Water								
22390600-013BF24A (A4L1777-12)								
<u>Batch: 25A0408</u>								
Lead	0.592	---	0.200	ug/L	1	01/15/25 18:43	EPA 200.8	
Matrix: Drinking Water								
22390600-014SF24A (A4L1777-13)								
<u>Batch: 25A0408</u>								
Lead	1.01	---	0.200	ug/L	1	01/15/25 18:45	EPA 200.8	
Matrix: Drinking Water								
22390600-015WC24A (A4L1777-14)								
<u>Batch: 25A0408</u>								
Lead	ND	---	0.200	ug/L	1	01/15/25 18:47	EPA 200.8	
Matrix: Drinking Water								
22390600-016BF24A (A4L1777-15)								
<u>Batch: 25A0408</u>								
Lead	1.94	---	0.200	ug/L	1	01/15/25 18:49	EPA 200.8	
Matrix: Drinking Water								
22390600-017BF24A (A4L1777-16)								
<u>Batch: 25A0408</u>								
Lead	1.61	---	0.200	ug/L	1	01/15/25 18:50	EPA 200.8	
Matrix: Drinking Water								
22390600-018BF24A (A4L1777-17RE1)								
<u>Batch: 25A0537</u>								
Lead	0.812	---	0.200	ug/L	1	01/16/25 16:35	EPA 200.8	
Matrix: Drinking Water								
22390600-019DW24A (A4L1777-18)								
<u>Batch: 25A0408</u>								
Lead	5.37	---	0.200	ug/L	1	01/15/25 18:54	EPA 200.8	

Apex Laboratories

Jason Woodcock, Project Manager

The results in this report apply to the samples analyzed in accordance with the chain of custody document(s) and updated by any subsequent written communications. This analytical report must be reproduced in its entirety.



ANALYTICAL REPORT

Apex Laboratories, LLC

6700 S.W. Sandburg Street
Tigard, OR 97223
503-718-2323
ORELAP ID: OR100062

PBS Engineering and Environmental 4412 S Corbett Ave Portland, OR 97239	Project: Hillsboro School District Project Number: Minter Bridge ES/24013061 Project Manager: Dale Voeller	Report ID: A4L1777 - 01 17 25 1050
--	---	---

ANALYTICAL SAMPLE RESULTS

Total Metals in Drinking Water by EPA 200.8 (ICPMS)

Analyte	Sample Result	Detection Limit	Reporting Limit	Units	Dilution	Date Analyzed	Method Ref.	Notes
22390600-020CF24A (A4L1777-19)				Matrix: Drinking Water				
<u>Batch: 25A0408</u>								
Lead	12.3	---	0.200	ug/L	1	01/15/25 18:56	EPA 200.8	
22390600-021DW24A (A4L1777-20)				Matrix: Drinking Water				
<u>Batch: 25A0408</u>								
Lead	28.9	---	0.200	ug/L	1	01/15/25 18:58	EPA 200.8	
22390600-022CF24A (A4L1777-21)				Matrix: Drinking Water				
<u>Batch: 25A0408</u>								
Lead	8.85	---	0.200	ug/L	1	01/15/25 19:05	EPA 200.8	
22390600-023NS24A (A4L1777-22)				Matrix: Drinking Water				
<u>Batch: 25A0408</u>								
Lead	1.47	---	0.200	ug/L	1	01/15/25 19:07	EPA 200.8	
22390600-024SF24A (A4L1777-23)				Matrix: Drinking Water				
<u>Batch: 25A0408</u>								
Lead	5.47	---	0.200	ug/L	1	01/15/25 19:09	EPA 200.8	
22390600-025DW24A (A4L1777-24)				Matrix: Drinking Water				
<u>Batch: 25A0408</u>								
Lead	2.35	---	0.200	ug/L	1	01/15/25 19:11	EPA 200.8	
22390600-026BF24A (A4L1777-25)				Matrix: Drinking Water				
<u>Batch: 25A0413</u>								
Lead	0.207	---	0.200	ug/L	1	01/16/25 09:13	EPA 200.8	
22390600-027DW24A (A4L1777-26)				Matrix: Drinking Water				
<u>Batch: 25A0413</u>								
Lead	3.30	---	0.200	ug/L	1	01/16/25 09:18	EPA 200.8	
22390600-028CF24A (A4L1777-27)				Matrix: Drinking Water				
<u>Batch: 25A0413</u>								
Lead	3.30	---	0.200	ug/L	1	01/16/25 09:20	EPA 200.8	

Apex Laboratories

The results in this report apply to the samples analyzed in accordance with the chain of custody document(s) and updated by any subsequent written communications. This analytical report must be reproduced in its entirety.

Jason Woodcock, Project Manager



ANALYTICAL REPORT

Apex Laboratories, LLC

6700 S.W. Sandburg Street
Tigard, OR 97223
503-718-2323
ORELAP ID: OR100062

PBS Engineering and Environmental 4412 S Corbett Ave Portland, OR 97239	Project: Hillsboro School District Project Number: Minter Bridge ES/24013061 Project Manager: Dale Voeller	Report ID: A4L1777 - 01 17 25 1050
--	---	---

ANALYTICAL SAMPLE RESULTS

Total Metals in Drinking Water by EPA 200.8 (ICPMS)

Analyte	Sample Result	Detection Limit	Reporting Limit	Units	Dilution	Date Analyzed	Method Ref.	Notes
22390600-029DW24A (A4L1777-28)				Matrix: Drinking Water				
<u>Batch: 25A0413</u>								
Lead	3.69	---	0.200	ug/L	1	01/16/25 09:22	EPA 200.8	
22390600-030CF24A (A4L1777-29)				Matrix: Drinking Water				
<u>Batch: 25A0413</u>								
Lead	3.23	---	0.200	ug/L	1	01/16/25 09:24	EPA 200.8	
22390600-031DW24A (A4L1777-30)				Matrix: Drinking Water				
<u>Batch: 25A0413</u>								
Lead	2.87	---	0.200	ug/L	1	01/16/25 09:25	EPA 200.8	
22390600-032CF24A (A4L1777-31)				Matrix: Drinking Water				
<u>Batch: 25A0413</u>								
Lead	2.89	---	0.200	ug/L	1	01/16/25 09:31	EPA 200.8	
22390600-033DW24A (A4L1777-32)				Matrix: Drinking Water				
<u>Batch: 25A0413</u>								
Lead	5.27	---	0.200	ug/L	1	01/16/25 09:33	EPA 200.8	
22390600-034CF24A (A4L1777-33)				Matrix: Drinking Water				
<u>Batch: 25A0413</u>								
Lead	3.16	---	0.200	ug/L	1	01/16/25 09:35	EPA 200.8	
22390600-035DW24A (A4L1777-34)				Matrix: Drinking Water				
<u>Batch: 25A0413</u>								
Lead	5.31	---	0.200	ug/L	1	01/16/25 09:37	EPA 200.8	
22390600-036BF24A (A4L1777-35RE1)				Matrix: Drinking Water				
<u>Batch: 25A0413</u>								
Lead	0.322	---	0.200	ug/L	1	01/16/25 15:02	EPA 200.8	
22390600-037BF24A (A4L1777-36RE1)				Matrix: Drinking Water				
<u>Batch: 25A0413</u>								
Lead	0.393	---	0.200	ug/L	1	01/16/25 15:04	EPA 200.8	

Apex Laboratories

Jason Woodcock, Project Manager

The results in this report apply to the samples analyzed in accordance with the chain of custody document(s) and updated by any subsequent written communications. This analytical report must be reproduced in its entirety.



ANALYTICAL REPORT

Apex Laboratories, LLC

6700 S.W. Sandburg Street
Tigard, OR 97223
503-718-2323
ORELAP ID: OR100062

PBS Engineering and Environmental 4412 S Corbett Ave Portland, OR 97239	Project: Hillsboro School District Project Number: Minter Bridge ES/24013061 Project Manager: Dale Voeller	Report ID: A4L1777 - 01 17 25 1050
--	---	---

ANALYTICAL SAMPLE RESULTS

Total Metals in Drinking Water by EPA 200.8 (ICPMS)

Analyte	Sample Result	Detection Limit	Reporting Limit	Units	Dilution	Date Analyzed	Method Ref.	Notes
22390600-038BF24A (A4L1777-37RE1)				Matrix: Drinking Water				
<u>Batch: 25A0413</u>								
Lead	0.610	---	0.200	ug/L	1	01/16/25 15:06	EPA 200.8	
22390600-039BF24A (A4L1777-38RE1)				Matrix: Drinking Water				
<u>Batch: 25A0413</u>								
Lead	0.419	---	0.200	ug/L	1	01/16/25 15:07	EPA 200.8	
22390600-040DW24A (A4L1777-39)				Matrix: Drinking Water				
<u>Batch: 25A0413</u>								
Lead	4.64	---	0.200	ug/L	1	01/16/25 09:46	EPA 200.8	
22390600-041CF24A (A4L1777-40)				Matrix: Drinking Water				
<u>Batch: 25A0413</u>								
Lead	1.85	---	0.200	ug/L	1	01/16/25 09:48	EPA 200.8	
22390600-042DW24A (A4L1777-41)				Matrix: Drinking Water				
<u>Batch: 25A0413</u>								
Lead	6.77	---	0.200	ug/L	1	01/16/25 09:53	EPA 200.8	
22390600-043CF24A (A4L1777-42)				Matrix: Drinking Water				
<u>Batch: 25A0413</u>								
Lead	3.35	---	0.200	ug/L	1	01/16/25 09:55	EPA 200.8	
22390600-044CF24A (A4L1777-43)				Matrix: Drinking Water				
<u>Batch: 25A0413</u>								
Lead	10.1	---	0.200	ug/L	1	01/16/25 09:57	EPA 200.8	
22390600-045DW24A (A4L1777-44)				Matrix: Drinking Water				
<u>Batch: 25A0413</u>								
Lead	12.7	---	0.200	ug/L	1	01/16/25 09:59	EPA 200.8	
22390600-046CF24A (A4L1777-45RE1)				Matrix: Drinking Water				
<u>Batch: 25A0428</u>								
Lead	0.579	---	0.200	ug/L	1	01/16/25 15:36	EPA 200.8	

Apex Laboratories

Jason Woodcock, Project Manager

The results in this report apply to the samples analyzed in accordance with the chain of custody document(s) and updated by any subsequent written communications. This analytical report must be reproduced in its entirety.



ANALYTICAL REPORT

Apex Laboratories, LLC

6700 S.W. Sandburg Street
Tigard, OR 97223
503-718-2323
ORELAP ID: OR100062

<u>PBS Engineering and Environmental</u> 4412 S Corbett Ave Portland, OR 97239	Project: <u>Hillsboro School District</u> Project Number: Minter Bridge ES/24013061 Project Manager: Dale Voeller	Report ID: A4L1777 - 01 17 25 1050
---	--	---

QUALITY CONTROL (QC) SAMPLE RESULTS

Total Metals in Drinking Water by EPA 200.8 (ICPMS)

Analyte	Result	Detection Limit	Reporting Limit	Units	Dilution	Spike Amount	Source Result	% REC	% REC Limits	RPD	RPD Limit	Notes
Batch 25A0404 - EPA 200.8 Direct Analysis						Drinking Water						
Blank (25A0404-BLK1)		Prepared: 01/13/25 14:42 Analyzed: 01/15/25 15:30										
<u>EPA 200.8</u>												
Lead	ND	---	0.200	ug/L	1	---	---	---	---	---	---	---
LCS (25A0404-BS1)		Prepared: 01/13/25 14:42 Analyzed: 01/15/25 15:32										
<u>EPA 200.8</u>												
Lead	15.2	---	0.201	ug/L	1	15.0	---	101	85 - 115%	---	---	---
Matrix Spike (25A0404-MS2)		Prepared: 01/13/25 14:42 Analyzed: 01/15/25 16:22										
<u>QC Source Sample: 22390600-004KF24A (A4L1777-04)</u>												
<u>EPA 200.8</u>												
Lead	20.9	---	0.201	ug/L	1	15.0	5.98	100	70 - 130%	---	---	---
Batch 25A0408 - EPA 200.8 Direct Analysis						Drinking Water						
Blank (25A0408-BLK1)		Prepared: 01/13/25 15:50 Analyzed: 01/15/25 18:17										
<u>EPA 200.8</u>												
Lead	ND	---	0.200	ug/L	1	---	---	---	---	---	---	---
LCS (25A0408-BS1)		Prepared: 01/13/25 15:50 Analyzed: 01/15/25 18:19										
<u>EPA 200.8</u>												
Lead	15.7	---	0.201	ug/L	1	15.0	---	105	85 - 115%	---	---	---
Duplicate (25A0408-DUP1)		Prepared: 01/13/25 15:50 Analyzed: 01/15/25 18:23										
<u>QC Source Sample: 22390600-005DW24A (A4L1777-05)</u>												
<u>EPA 200.8</u>												
Lead	6.23	---	0.200	ug/L	1	---	6.14	---	---	1	20%	---
Matrix Spike (25A0408-MS1)		Prepared: 01/13/25 15:50 Analyzed: 01/15/25 18:25										
<u>QC Source Sample: 22390600-005DW24A (A4L1777-05)</u>												
<u>EPA 200.8</u>												
Lead	21.6	---	0.201	ug/L	1	15.0	6.14	103	70 - 130%	---	---	---
Matrix Spike (25A0408-MS2)		Prepared: 01/13/25 15:50 Analyzed: 01/15/25 19:13										
<u>QC Source Sample: 22390600-025DW24A (A4L1777-24)</u>												

Apex Laboratories

Jason Woodcock, Project Manager

The results in this report apply to the samples analyzed in accordance with the chain of custody document(s) and updated by any subsequent written communications. This analytical report must be reproduced in its entirety.



ANALYTICAL REPORT

Apex Laboratories, LLC

6700 S.W. Sandburg Street
Tigard, OR 97223
503-718-2323
ORELAP ID: OR100062

<u>PBS Engineering and Environmental</u> 4412 S Corbett Ave Portland, OR 97239	Project: <u>Hillsboro School District</u> Project Number: Minter Bridge ES/24013061 Project Manager: Dale Voeller	Report ID: A4L1777 - 01 17 25 1050
---	--	---

QUALITY CONTROL (QC) SAMPLE RESULTS

Total Metals in Drinking Water by EPA 200.8 (ICPMS)

Analyte	Result	Detection Limit	Reporting Limit	Units	Dilution	Spike Amount	Source Result	% REC	% REC Limits	RPD	RPD Limit	Notes
Batch 25A0408 - EPA 200.8 Direct Analysis						Drinking Water						
Matrix Spike (25A0408-MS2)		Prepared: 01/13/25 15:50 Analyzed: 01/15/25 19:13										
<u>QC Source Sample: 22390600-025DW24A (A4L1777-24)</u>												
<u>EPA 200.8</u>												
Lead	18.5	---	0.201	ug/L	1	15.0	2.35	107	70 - 130%	---	---	

Apex Laboratories

The results in this report apply to the samples analyzed in accordance with the chain of custody document(s) and updated by any subsequent written communications. This analytical report must be reproduced in its entirety.

Jason Woodcock, Project Manager



ANALYTICAL REPORT

Apex Laboratories, LLC

6700 S.W. Sandburg Street
Tigard, OR 97223
503-718-2323
ORELAP ID: OR100062

PBS Engineering and Environmental 4412 S Corbett Ave Portland, OR 97239	Project: Hillsboro School District Project Number: Minter Bridge ES/24013061 Project Manager: Dale Voeller	Report ID: A4L1777 - 01 17 25 1050
--	---	--

QUALITY CONTROL (QC) SAMPLE RESULTS

Total Metals in Drinking Water by EPA 200.8 (ICPMS)

Analyte	Result	Detection Limit	Reporting Limit	Units	Dilution	Spike Amount	Source Result	% REC	% REC Limits	RPD	RPD Limit	Notes
Batch 25A0413 - EPA 200.8 Direct Analysis						Drinking Water						
Blank (25A0413-BLK1)		Prepared: 01/13/25 17:09 Analyzed: 01/16/25 09:09										
<u>EPA 200.8</u>												
Lead	ND	---	0.200	ug/L	1	---	---	---	---	---	---	---
LCS (25A0413-BS1)		Prepared: 01/13/25 17:09 Analyzed: 01/16/25 09:11										
<u>EPA 200.8</u>												
Lead	14.9	---	0.201	ug/L	1	15.0	---	100	85 - 115%	---	---	---
Duplicate (25A0413-DUP1)		Prepared: 01/13/25 17:09 Analyzed: 01/16/25 09:14										
<u>QC Source Sample: 22390600-026BF24A (A4L1777-25)</u>												
<u>EPA 200.8</u>												
Lead	ND	---	0.200	ug/L	1	---	0.207	---	---	***	20%	---
Matrix Spike (25A0413-MS1)		Prepared: 01/13/25 17:09 Analyzed: 01/16/25 09:16										
<u>QC Source Sample: 22390600-026BF24A (A4L1777-25)</u>												
<u>EPA 200.8</u>												
Lead	14.9	---	0.201	ug/L	1	15.0	0.207	98	70 - 130%	---	---	---
Matrix Spike (25A0413-MS2)		Prepared: 01/13/25 17:09 Analyzed: 01/16/25 10:01										
<u>QC Source Sample: 22390600-045DW24A (A4L1777-44)</u>												
<u>EPA 200.8</u>												
Lead	27.1	---	0.201	ug/L	1	15.0	12.7	96	70 - 130%	---	---	---

Apex Laboratories

Jason Woodcock, Project Manager

The results in this report apply to the samples analyzed in accordance with the chain of custody document(s) and updated by any subsequent written communications. This analytical report must be reproduced in its entirety.



ANALYTICAL REPORT

Apex Laboratories, LLC

6700 S.W. Sandburg Street
Tigard, OR 97223
503-718-2323
ORELAP ID: OR100062

PBS Engineering and Environmental 4412 S Corbett Ave Portland, OR 97239	Project: Hillsboro School District Project Number: Minter Bridge ES/24013061 Project Manager: Dale Voeller	Report ID: A4L1777 - 01 17 25 1050
--	---	---

QUALITY CONTROL (QC) SAMPLE RESULTS

Total Metals in Drinking Water by EPA 200.8 (ICPMS)

Analyte	Result	Detection Limit	Reporting Limit	Units	Dilution	Spike Amount	Source Result	% REC	% REC Limits	RPD	RPD Limit	Notes
Batch 25A0428 - EPA 200.8 Direct Analysis						Drinking Water						
Blank (25A0428-BLK1)		Prepared: 01/14/25 09:53 Analyzed: 01/16/25 15:09										
<u>EPA 200.8</u>												
Lead	ND	---	0.200	ug/L	1	---	---	---	---	---	---	---
LCS (25A0428-BS1)		Prepared: 01/14/25 09:53 Analyzed: 01/16/25 15:11										
<u>EPA 200.8</u>												
Lead	15.3	---	0.201	ug/L	1	15.0	---	102	85 - 115%	---	---	---
Duplicate (25A0428-DUP2)		Prepared: 01/14/25 09:53 Analyzed: 01/16/25 15:38										
<u>QC Source Sample: 22390600-046CF24A (A4L1777-45)</u>												
<u>EPA 200.8</u>												
Lead	0.591	---	0.200	ug/L	1	---	0.644	---	---	9	20%	Q-16
Matrix Spike (25A0428-MS3)		Prepared: 01/14/25 09:53 Analyzed: 01/16/25 15:40										
<u>QC Source Sample: 22390600-046CF24A (A4L1777-45)</u>												
<u>EPA 200.8</u>												
Lead	15.2	---	0.201	ug/L	1	15.0	0.644	97	70 - 130%	---	---	Q-16

Apex Laboratories

The results in this report apply to the samples analyzed in accordance with the chain of custody document(s) and updated by any subsequent written communications. This analytical report must be reproduced in its entirety.

Jason Woodcock, Project Manager



ANALYTICAL REPORT

Apex Laboratories, LLC

6700 S.W. Sandburg Street
Tigard, OR 97223
503-718-2323
ORELAP ID: OR100062

PBS Engineering and Environmental 4412 S Corbett Ave Portland, OR 97239	Project: Hillsboro School District Project Number: Minter Bridge ES/24013061 Project Manager: Dale Voeller	Report ID: A4L1777 - 01 17 25 1050
--	---	--

QUALITY CONTROL (QC) SAMPLE RESULTS

Total Metals in Drinking Water by EPA 200.8 (ICPMS)

Analyte	Result	Detection Limit	Reporting Limit	Units	Dilution	Spike Amount	Source Result	% REC	% REC Limits	RPD	RPD Limit	Notes
Batch 25A0537 - EPA 200.8 Direct Analysis						Drinking Water						
Blank (25A0537-BLK1)		Prepared: 01/16/25 10:54 Analyzed: 01/16/25 16:32										
<u>EPA 200.8</u>												
Lead	ND	---	0.200	ug/L	1	---	---	---	---	---	---	---
LCS (25A0537-BS1)		Prepared: 01/16/25 10:54 Analyzed: 01/16/25 16:33										
<u>EPA 200.8</u>												
Lead	15.1	---	0.201	ug/L	1	15.0	---	101	85 - 115%	---	---	---
Duplicate (25A0537-DUP1)		Prepared: 01/16/25 10:54 Analyzed: 01/16/25 16:37										
<u>QC Source Sample: 22390600-018BF24A (A4L1777-17RE1)</u>												
<u>EPA 200.8</u>												
Lead	0.756	---	0.200	ug/L	1	---	0.812	---	---	7	20%	---
Matrix Spike (25A0537-MS1)		Prepared: 01/16/25 10:54 Analyzed: 01/16/25 16:39										
<u>QC Source Sample: 22390600-018BF24A (A4L1777-17RE1)</u>												
<u>EPA 200.8</u>												
Lead	15.6	---	0.201	ug/L	1	15.0	0.812	98	70 - 130%	---	---	---

Apex Laboratories

The results in this report apply to the samples analyzed in accordance with the chain of custody document(s) and updated by any subsequent written communications. This analytical report must be reproduced in its entirety.

Jason Woodcock, Project Manager



ANALYTICAL REPORT

Apex Laboratories, LLC

6700 S.W. Sandburg Street
Tigard, OR 97223
503-718-2323
ORELAP ID: OR100062

<u>PBS Engineering and Environmental</u> 4412 S Corbett Ave Portland, OR 97239	Project: <u>Hillsboro School District</u> Project Number: Minter Bridge ES/24013061 Project Manager: Dale Voeller	Report ID: A4L1777 - 01 17 25 1050
---	--	---

SAMPLE PREPARATION INFORMATION

Total Metals in Drinking Water by EPA 200.8 (ICPMS)

Prep: EPA 200.8 Direct Analysis

Lab Number	Matrix	Method	Sampled	Prepared	Sample Initial/Final	Default Initial/Final	RL Prep Factor
Batch: 25A0404							
A4L1777-01	Drinking Water	EPA 200.8	12/14/24 00:00	01/13/25 14:42	10mL/10mL	10mL/10mL	1.00
A4L1777-02	Drinking Water	EPA 200.8	12/14/24 00:00	01/13/25 14:42	10mL/10mL	10mL/10mL	1.00
A4L1777-03	Drinking Water	EPA 200.8	12/14/24 00:00	01/13/25 14:42	10mL/10mL	10mL/10mL	1.00
A4L1777-04	Drinking Water	EPA 200.8	12/14/24 00:00	01/13/25 14:42	10mL/10mL	10mL/10mL	1.00
Batch: 25A0408							
A4L1777-05	Drinking Water	EPA 200.8	12/14/24 00:00	01/13/25 15:50	10mL/10mL	10mL/10mL	1.00
A4L1777-06	Drinking Water	EPA 200.8	12/14/24 00:00	01/13/25 15:50	10mL/10mL	10mL/10mL	1.00
A4L1777-07	Drinking Water	EPA 200.8	12/14/24 00:00	01/13/25 15:50	10mL/10mL	10mL/10mL	1.00
A4L1777-08	Drinking Water	EPA 200.8	12/14/24 00:00	01/13/25 15:50	10mL/10mL	10mL/10mL	1.00
A4L1777-09	Drinking Water	EPA 200.8	12/14/24 00:00	01/13/25 15:50	10mL/10mL	10mL/10mL	1.00
A4L1777-10	Drinking Water	EPA 200.8	12/14/24 00:00	01/13/25 15:50	10mL/10mL	10mL/10mL	1.00
A4L1777-11	Drinking Water	EPA 200.8	12/14/24 00:00	01/13/25 15:50	10mL/10mL	10mL/10mL	1.00
A4L1777-12	Drinking Water	EPA 200.8	12/14/24 00:00	01/13/25 15:50	10mL/10mL	10mL/10mL	1.00
A4L1777-13	Drinking Water	EPA 200.8	12/14/24 00:00	01/13/25 15:50	10mL/10mL	10mL/10mL	1.00
A4L1777-14	Drinking Water	EPA 200.8	12/14/24 00:00	01/13/25 15:50	10mL/10mL	10mL/10mL	1.00
A4L1777-15	Drinking Water	EPA 200.8	12/14/24 00:00	01/13/25 15:50	10mL/10mL	10mL/10mL	1.00
A4L1777-16	Drinking Water	EPA 200.8	12/14/24 00:00	01/13/25 15:50	10mL/10mL	10mL/10mL	1.00
A4L1777-18	Drinking Water	EPA 200.8	12/14/24 00:00	01/13/25 15:50	10mL/10mL	10mL/10mL	1.00
A4L1777-19	Drinking Water	EPA 200.8	12/14/24 00:00	01/13/25 15:50	10mL/10mL	10mL/10mL	1.00
A4L1777-20	Drinking Water	EPA 200.8	12/14/24 00:00	01/13/25 15:50	10mL/10mL	10mL/10mL	1.00
A4L1777-21	Drinking Water	EPA 200.8	12/14/24 00:00	01/13/25 15:50	10mL/10mL	10mL/10mL	1.00
A4L1777-22	Drinking Water	EPA 200.8	12/14/24 00:00	01/13/25 15:50	10mL/10mL	10mL/10mL	1.00
A4L1777-23	Drinking Water	EPA 200.8	12/14/24 00:00	01/13/25 15:50	10mL/10mL	10mL/10mL	1.00
A4L1777-24	Drinking Water	EPA 200.8	12/14/24 00:00	01/13/25 15:50	10mL/10mL	10mL/10mL	1.00
Batch: 25A0413							
A4L1777-25	Drinking Water	EPA 200.8	12/14/24 00:00	01/13/25 17:09	10mL/10mL	10mL/10mL	1.00
A4L1777-26	Drinking Water	EPA 200.8	12/14/24 00:00	01/13/25 17:09	10mL/10mL	10mL/10mL	1.00
A4L1777-27	Drinking Water	EPA 200.8	12/14/24 00:00	01/13/25 17:09	10mL/10mL	10mL/10mL	1.00
A4L1777-28	Drinking Water	EPA 200.8	12/14/24 00:00	01/13/25 17:09	10mL/10mL	10mL/10mL	1.00
A4L1777-29	Drinking Water	EPA 200.8	12/14/24 00:00	01/13/25 17:09	10mL/10mL	10mL/10mL	1.00
A4L1777-30	Drinking Water	EPA 200.8	12/14/24 00:00	01/13/25 17:09	10mL/10mL	10mL/10mL	1.00
A4L1777-31	Drinking Water	EPA 200.8	12/14/24 00:00	01/13/25 17:09	10mL/10mL	10mL/10mL	1.00
A4L1777-32	Drinking Water	EPA 200.8	12/14/24 00:00	01/13/25 17:09	10mL/10mL	10mL/10mL	1.00
A4L1777-33	Drinking Water	EPA 200.8	12/14/24 00:00	01/13/25 17:09	10mL/10mL	10mL/10mL	1.00
A4L1777-34	Drinking Water	EPA 200.8	12/14/24 00:00	01/13/25 17:09	10mL/10mL	10mL/10mL	1.00

Apex Laboratories

The results in this report apply to the samples analyzed in accordance with the chain of custody document(s) and updated by any subsequent written communications. This analytical report must be reproduced in its entirety.

Jason Woodcock, Project Manager



ANALYTICAL REPORT

Apex Laboratories, LLC

6700 S.W. Sandburg Street
Tigard, OR 97223
503-718-2323

ORELAP ID: OR100062

<u>PBS Engineering and Environmental</u> 4412 S Corbett Ave Portland, OR 97239	Project: <u>Hillsboro School District</u> Project Number: Minter Bridge ES/24013061 Project Manager: Dale Voeller	Report ID: A4L1777 - 01 17 25 1050
---	--	---

SAMPLE PREPARATION INFORMATION

Total Metals in Drinking Water by EPA 200.8 (ICPMS)

Prep: EPA 200.8 Direct Analysis

Lab Number	Matrix	Method	Sampled	Prepared	Sample Initial/Final	Default Initial/Final	RL Prep Factor
A4L1777-35RE1	Drinking Water	EPA 200.8	12/14/24 00:00	01/13/25 17:09	10mL/10mL	10mL/10mL	1.00
A4L1777-36RE1	Drinking Water	EPA 200.8	12/14/24 00:00	01/13/25 17:09	10mL/10mL	10mL/10mL	1.00
A4L1777-37RE1	Drinking Water	EPA 200.8	12/14/24 00:00	01/13/25 17:09	10mL/10mL	10mL/10mL	1.00
A4L1777-38RE1	Drinking Water	EPA 200.8	12/14/24 00:00	01/13/25 17:09	10mL/10mL	10mL/10mL	1.00
A4L1777-39	Drinking Water	EPA 200.8	12/14/24 00:00	01/13/25 17:09	10mL/10mL	10mL/10mL	1.00
A4L1777-40	Drinking Water	EPA 200.8	12/14/24 00:00	01/13/25 17:09	10mL/10mL	10mL/10mL	1.00
A4L1777-41	Drinking Water	EPA 200.8	12/14/24 00:00	01/13/25 17:09	10mL/10mL	10mL/10mL	1.00
A4L1777-42	Drinking Water	EPA 200.8	12/14/24 00:00	01/13/25 17:09	10mL/10mL	10mL/10mL	1.00
A4L1777-43	Drinking Water	EPA 200.8	12/14/24 00:00	01/13/25 17:09	10mL/10mL	10mL/10mL	1.00
A4L1777-44	Drinking Water	EPA 200.8	12/14/24 00:00	01/13/25 17:09	10mL/10mL	10mL/10mL	1.00
<u>Batch: 25A0428</u>							
A4L1777-45RE1	Drinking Water	EPA 200.8	12/14/24 00:00	01/14/25 09:53	10mL/10mL	10mL/10mL	1.00
<u>Batch: 25A0537</u>							
A4L1777-17RE1	Drinking Water	EPA 200.8	12/14/24 00:00	01/16/25 10:54	10mL/10mL	10mL/10mL	1.00

Apex Laboratories

The results in this report apply to the samples analyzed in accordance with the chain of custody document(s) and updated by any subsequent written communications. This analytical report must be reproduced in its entirety.

Jason Woodcock, Project Manager



ANALYTICAL REPORT

Apex Laboratories, LLC

6700 S.W. Sandburg Street
Tigard, OR 97223
503-718-2323
ORELAP ID: OR100062

<u>PBS Engineering and Environmental</u>	Project: <u>Hillsboro School District</u>	<u>Report ID:</u>
4412 S Corbett Ave	Project Number: Minter Bridge ES/24013061	A4L1777 - 01 17 25 1050
Portland, OR 97239	Project Manager: Dale Voeller	

QUALIFIER DEFINITIONS

Client Sample and Quality Control (QC) Sample Qualifier Definitions:

Apex Laboratories

Q-16 Reanalysis of an original Batch QC sample.

Apex Laboratories

The results in this report apply to the samples analyzed in accordance with the chain of custody document(s) and updated by any subsequent written communications. This analytical report must be reproduced in its entirety.

Jason Woodcock, Project Manager



ANALYTICAL REPORT

Apex Laboratories, LLC

6700 S.W. Sandburg Street
Tigard, OR 97223
503-718-2323
ORELAP ID: OR100062

<u>PBS Engineering and Environmental</u> 4412 S Corbett Ave Portland, OR 97239	Project: <u>Hillsboro School District</u> Project Number: Minter Bridge ES/24013061 Project Manager: Dale Voeller	Report ID: A4L1777 - 01 17 25 1050
---	--	---

REPORTING NOTES AND CONVENTIONS:

Abbreviations:

- DET Analyte DETECTED at or above the detection or reporting limit.
- ND Analyte NOT DETECTED at or above the detection or reporting limit.
- NR Result Not Reported.
- RPD Relative Percent Difference. RPDs for Matrix Spikes and Matrix Spike Duplicates are based on concentration, not recovery.

Detection Limits: Limit of Detection (LOD)

Limits of Detection (LODs) are normally set at a level of one half the validated Limit of Quantitation (LOQ).
If no value is listed ('----'), then the data has not been evaluated below the Reporting Limit.

Reporting Limits: Limit of Quantitation (LOQ)

Validated Limits of Quantitation (LOQs) are reported as the Reporting Limits for all analyses where the LOQ, MRL, PQL or CRL are requested. The LOQ represents a level at or above the low point of the calibration curve, that has been validated according to Apex Laboratories' comprehensive LOQ policies and procedures.

Reporting Conventions:

- Basis: Results for soil samples are generally reported on a 100% dry weight basis.
The Result Basis is listed following the units as " dry", " wet", or " " (blank) designation.
- " dry" Sample results and Reporting Limits are reported on a dry weight basis. (i.e. "ug/kg dry")
See Percent Solids section for details of dry weight analysis.
- " wet" Sample results and Reporting Limits for this analysis are normally dry weight corrected, but have not been modified in this case.
- " " Results without 'wet' or 'dry' designation are not normally dry weight corrected. These results are considered 'As Received'.

QC Source:

In cases where there is insufficient sample provided for Sample Duplicates and/or Matrix Spikes, a Lab Control Sample Duplicate (LCS Dup) may be analyzed to demonstrate accuracy and precision of the extraction batch.

Non-Client Batch QC Samples (Duplicates and Matrix Spike/Duplicates) are not included in this report. Please request a Full QC report if this data is required.

Miscellaneous Notes:

- " --- " QC results are not applicable. For example, % Recoveries for Blanks and Duplicates, % RPD for Blanks, Blank Spikes and Matrix Spikes, etc.
- " *** " Used to indicate a possible discrepancy with the Sample and Sample Duplicate results when the %RPD is not available. In this case, either the Sample or the Sample Duplicate has a reportable result for this analyte, while the other is Non Detect (ND).

Blanks:

Standard practice is to evaluate the results from Blank QC Samples down to a level equal to one half of the Reporting Limit (RL).
 Blank results for gravimetric analyses are evaluated to the Reporting Level, not to half of the Reporting Level.
 -For Blank hits falling between 1/2 the RL and the RL (J flagged hits), the associated sample and QC data will receive a 'B-02' qualifier.
 -For Blank hits above the RL, the associated sample and QC data will receive a 'B' qualifier, per Apex Laboratories' Blank Policy.

Apex Laboratories

The results in this report apply to the samples analyzed in accordance with the chain of custody document(s) and updated by any subsequent written communications. This analytical report must be reproduced in its entirety.



ANALYTICAL REPORT

Apex Laboratories, LLC

6700 S.W. Sandburg Street
Tigard, OR 97223
503-718-2323
ORELAP ID: OR100062

<u>PBS Engineering and Environmental</u> 4412 S Corbett Ave Portland, OR 97239	Project: <u>Hillsboro School District</u> Project Number: Minter Bridge ES/24013061 Project Manager: Dale Voeller	Report ID: A4L1777 - 01 17 25 1050
---	--	---

REPORTING NOTES AND CONVENTIONS (Cont.):

Blanks (Cont.):

Sample results flagged with a 'B' or 'B-02' qualifier are potentially biased high if the sample results are less than ten times the level found in the blank for inorganic analyses, or less than five times the level found in the blank for organic analyses. 'B' and 'B-02' qualifications are only applied to sample results detected above the Reporting Level.

Preparation Notes:

Mixed Matrix Samples:

Water Samples:

Water samples containing significant amounts of sediment are decanted or separated prior to extraction, and only the water portion analyzed, unless otherwise directed by the client.

Soil and Sediment Samples:

Soil and Sediment samples containing significant amounts of water are decanted prior to extraction, and only the solid portion analyzed, unless otherwise directed by the client.

Sampling and Preservation Notes:

Certain regulatory programs, such as National Pollutant Discharge Elimination System (NPDES), require that activities such as sample filtration (for dissolved metals, orthophosphate, hexavalent chromium, etc.) and testing of short hold analytes (pH, Dissolved Oxygen, etc.) be performed in the field (on-site) within a short time window. In addition, sample matrix spikes are required for some analyses, and sufficient volume must be provided, and billable site specific QC requested, if this is required. All regulatory permits should be reviewed to ensure that these requirements are being met.

Data users should be aware of which regulations pertain to the samples they submit for testing. If related sample collection activities are not approved for a particular regulatory program, results should be considered estimates. Apex Laboratories will qualify these analytes according to the most stringent requirements, however results for samples that are for non-regulatory purposes may be acceptable.

Samples that have been filtered and preserved at Apex Laboratories per client request are listed in the preparation section of the report with the date and time of filtration listed.

Apex Laboratories maintains detailed records on sample receipt, including client label verification, cooler temperature, sample preservation, hold time compliance and field filtration. Data is qualified as necessary, and the lack of qualification indicates compliance with required parameters.

Apex Laboratories

The results in this report apply to the samples analyzed in accordance with the chain of custody document(s) and updated by any subsequent written communications. This analytical report must be reproduced in its entirety.

Jason Woodcock, Project Manager



ANALYTICAL REPORT

Apex Laboratories, LLC

6700 S.W. Sandburg Street
Tigard, OR 97223
503-718-2323
ORELAP ID: OR100062

<u>PBS Engineering and Environmental</u> 4412 S Corbett Ave Portland, OR 97239	Project: <u>Hillsboro School District</u> Project Number: Minter Bridge ES/24013061 Project Manager: Dale Voeller	Report ID: A4L1777 - 01 17 25 1050
---	--	---

Decanted Samples:

Soils/Sediments:

Unless TCLP analysis is required or there is notification otherwise for a specific project, all Soil and Sediments containing excess water are decanted prior to analysis in order to provide the most representative sample for analysis.

Water Samples:

Water samples containing solids and sediment may need to be decanted in order to eliminate these particulates from the water extractions. In the case of organics extractions, a solvent rinse of the container will not be performed.

Volatiles Soils (5035s)

Samples that are field preserved by 5035 for volatiles are dry weight corrected using the same dry weight correction as for normal analyses. In the case of decanted samples, the dry weight may be performed on a decanted sample, while the aliquot for 5035 may not have been treated the same way. If this is a concern, please submit separate containers for dry weight analysis for volatiles can be provided.

All samples decanted in the laboratory are noted in this report with the DCNT qualifier indicating the sample was decanted.

Apex Laboratories

The results in this report apply to the samples analyzed in accordance with the chain of custody document(s) and updated by any subsequent written communications. This analytical report must be reproduced in its entirety.

Jason Woodcock, Project Manager



ANALYTICAL REPORT

Apex Laboratories, LLC
6700 S.W. Sandburg Street
Tigard, OR 97223
503-718-2323
ORELAP ID: OR100062

Table with project details: PBS Engineering and Environmental, Hillsboro School District, Minter Bridge ES/24013061, Dale Voeller, Report ID: A4L1777 - 01 17 25 1050

LABORATORY ACCREDITATION INFORMATION

ORELAP Certification ID: OR100062 (Primary Accreditation)
EPA ID: OR01039

All methods and analytes reported from work performed at Apex Laboratories are included on Apex Laboratories' ORELAP Scope of Certification, with the exception of any analyte(s) listed below:

Apex Laboratories

Table header with columns: Matrix, Analysis, TNI_ID, Analyte, TNI_ID, Accreditation

All reported analytes are included in Apex Laboratories' current ORELAP scope.

Secondary Accreditations

Apex Laboratories also maintains reciprocal accreditation with non-TNI states (Washington DOE), as well as other state specific accreditations not listed here.

Subcontract Laboratory Accreditations

Subcontracted data falls outside of Apex Laboratories' Scope of Accreditation. Please see the Subcontract Laboratory report for full details, or contact your Project Manager for more information.

Field Testing Parameters

Results for Field Tested data are provided by the client or sampler, and fall outside of Apex Laboratories' Scope of Accreditation.

Apex Laboratories

Handwritten signature of Jason Woodcock

The results in this report apply to the samples analyzed in accordance with the chain of custody document(s) and updated by any subsequent written communications. This analytical report must be reproduced in its entirety.

PBS Engineering and Environmental 4412 S Corbett Ave Portland, OR 97239	Project: Hillsboro School District Project Number: Minter Bridge ES/24013061 Project Manager: Dale Voeller	Report ID: A4L1777 - 01 17 25 1050
--	---	---

Lead in Drinking Water Testing Program Hillsboro School District
 Date Collected: 12/14/2024 School Name: Minter Bridge Elementary School

A4L1777

Fixture Number	Sample Number	Location / Description
28	028	22390600-028CF24A East classroom pod (5 th /6 th) activity area, east sink faucet
29	029	22390600-029DW24A East classroom pod (5 th /6 th) activity area, west sink drinking fountain
30	030	22390600-030CF24A East classroom pod (5 th /6 th) activity area, west sink faucet
31	031	22390600-031DW24A South classroom pod (3 rd /4 th) activity area, south sink drinking fountain
32	032	22390600-032CF24A South classroom pod (3 rd /4 th) activity area, south sink faucet
33	033	22390600-033DW24A South classroom pod (3 rd /4 th) activity area, north sink drinking fountain
34	034	22390600-034CF24A South classroom pod (3 rd /4 th) activity area, north sink faucet
35	035	22390600-035DW24A Drinking fountain outside of south girls restroom
36	036	22390600-036BF24A South girls restroom – left sink
37	037	22390600-037BF24A South girls restroom – right sink
38	038	22390600-038BF24A South boys restroom – left sink
39	039	22390600-039BF24A South boys restroom – right sink
40	040	22390600-040DW24A West classroom pod (1 st /2 nd) activity area, west sink drinking fountain
41	041	22390600-041CF24A West classroom pod (1 st /2 nd) activity area, west sink faucet
42	042	22390600-042DW24A West classroom pod (1 st /2 nd) activity area, east sink drinking fountain
43	043	22390600-043CF24A West classroom pod (1 st /2 nd) activity area, east sink faucet
44	044	22390600-044CF24A Library, sink at center post, sink faucet
45	045	22390600-045DW24A Library sink north, drinking fountain
46	046	22390600-046CF24A Library sink north, sink faucet
47		
48		
49		
50		

Relinquished By/Signature: *Dale Voeller* Date/Time: 12/24/24 @ 11:18 AM
 Received By/Signature: *gwb* APEX LABS Date/Time: 12/27/24 1404






ANALYTICAL REPORT

Apex Laboratories, LLC

6700 S.W. Sandburg Street
Tigard, OR 97223
503-718-2323
ORELAP ID: OR100062

PBS Engineering and Environmental 4412 S Corbett Ave Portland, OR 97239	Project: Hillsboro School District Project Number: Minter Bridge ES/24013061 Project Manager: Dale Voeller	Report ID: A4L1777 - 01 17 25 1050
--	---	---

APEX LABS COOLER RECEIPT FORM

Client: PBS Element WO#: A4 21777
 Project/Project #: Minter Bridge Elementary School - ^{Main} Building 24013061/0002
22390600

Delivery Info:

Date/time received: 12/27/24 @ 1404 By: EST
 Delivered by: Apex Client ESS FedEx UPS Radio Morgan SDS Evergreen Other
 From USDA Regulated Origin? Yes No

Cooler Inspection Date/time inspected: 12/27/24 @ 1427 By: EST

Chain of Custody included? Yes No
 Signed/dated by client? Yes No
 Contains USDA Reg. Soils? Yes No Unsure (email RegSoils)

	Cooler #1	Cooler #2	Cooler #3	Cooler #4	Cooler #5	Cooler #6	Cooler #7
Temperature (°C)	<u>17.0</u>						
Custody seals? (Y/N)	<u>N</u>						
Received on ice? (Y/N)	<u>N</u>						
Temp. blanks? (Y/N)	<u>NA</u>						
Ice type: (Gel/Real/Other)	<u>NA</u>						
Condition (In/Out):	<u>OUT</u>						

Cooler out of temp? (Y/N) Possible reason why: Drank My Water S
 Green dots applied to out of temperature samples? Yes No
 Out of temperature samples form initiated? Yes No

Sample Inspection: Date/time inspected: 12/27/24 @ 1747 By: JA
 All samples intact? Yes No Comments: _____

Bottle labels/COCs agree? Yes No Comments: Cont reads -003KF24A for -003KF22B,
-009BF24A for -009BF22B and -011DW124A for -011DW122B

COC/container discrepancies form initiated? Yes No
 Containers/volumes received appropriate for analysis? Yes No Comments: _____

Do VOA vials have visible headspace? Yes No NA
 Comments: _____

Water samples: pH checked: Yes No NA pH appropriate? Yes No NA pH ID: A25D72
 Comments: _____

Labeled by: JA Witness: WV Cooler Inspected by: JA
Form Y-003 R-02

Apex Laboratories

Jason Woodcock, Project Manager

The results in this report apply to the samples analyzed in accordance with the chain of custody document(s) and updated by any subsequent written communications. This analytical report must be reproduced in its entirety.



12423 NE Whitaker Way
Portland, OR 97230
503-254-1794



Report Number: 25-001078/D001.R000
Report Date: 02/03/2025
ORELAP#: OR100028
Purchase Order: 24013061 / 0002
Project Name: Minter Bridge ES
Project No:

Cover Letter

PBS Engineering
4412 S Corbett Ave
Portland Oregon 97267
United States of America (USA)

Dear Dale Voeller,

Enclosed please find Columbia Laboratories analytical report for samples received as order number 25-001078 on 01/30/2025 at 13:16. Should you have any questions about this report or any other matter, please do not hesitate to contact us. We are here to help you.

Thank you for allowing Columbia Laboratories to be of service to you, we appreciate your business.

Sincerely,

Derrick Tanner
General Manager



12423 NE Whitaker Way
 Portland, OR 97230
 503-254-1794



Report Number: 25-001078/D001.R000
Report Date: 02/03/2025
ORELAP#: OR100028
Purchase Order: 24013061 / 0002
Project Name: Minter Bridge ES
Project No:

Sample Results

Sample: 22390600-006BF25A	Collected: 1/30/25 06:30	Temp: 18.8 °C	Matrix:
Lab ID: 25-001078-0001	Received: 1/30/25 13:16	Evidence of Cooling: N	Drinking Water

Method: EPA 200.8 in mg/l									
Analyte	Result	Limit	Units	LOQ	Dil.	Batch	Start/Extract	Analyzed	Notes
Lead [±]	6.20	0.015	µg/l	0.2	1.00	2500772		02/03/25 10:38	

Sample Results

Sample: 22390600-006BF25B	Collected: 1/30/25 06:30	Temp: 18.8 °C	Matrix:
Lab ID: 25-001078-0002	Received: 1/30/25 13:16	Evidence of Cooling: N	Drinking Water

Method: EPA 200.8 in mg/l									
Analyte	Result	Limit	Units	LOQ	Dil.	Batch	Start/Extract	Analyzed	Notes
Lead [±]	2.00	0.015	µg/l	0.2	1.00	2500772		02/03/25 10:40	

Units of Measure

µg/l = micrograms per liter

Abbreviations

LOQ Limit of quantification

[±] = TNI accredited analyte.



12423 NE Whitaker Way
Portland, OR 97230
503-254-1794



Report Number: 25-001078/D001.R000
Report Date: 02/03/2025
ORELAP#: OR100028
Purchase Order: 24013061 / 0002
Project Name: Minter Bridge ES
Project No.:



Chain of Custody

PBS-Engineering
Environmental-
1738264696

Company Details Company: <u>PBS Engineering & Environmental</u> Contact: <u>Dale Voeller</u> Street Address: <u>4412 S. Corbett Avenue</u> City, State, Zip: <u>Portland, OR 97239</u> Email: <u>dale.voeller@pbsusa.com</u> Contact Phone: <u>503 515-4726</u> Billing Information Billing Email: <u>accountspayable@pbsusa.com</u>			Project Details Compliance: <u>Compliance</u> Turnaround Time: <u>2 Business Days Surcharges Apply</u> Sample Relinquishment Options: <u>Drop Off at Laboratory</u> Project Name / ID: <u>Minter Bridge ES</u> PONumber: <u>24013061 / 0002</u> Sample(s) Collected By: <u>Ellie Dick</u> Receipt Information Evidence of Cooling?: <u>No</u> Sample Condition: <u>Satisfactory</u> Prelog Storage: <u>CL-1215</u>			Testing E2008Pb - Lead in DW - Schools/Childcare	Bottles 250ml Poly HNCB
#	Material	Sample Name Field ID	Collection Date	Collection Time	Additional Test Requests and Sample Comments		
1	Drinking Water	22390600-006BF25A	01/30/2025	6:30 AM	First Draw	✓	B0024
2	Drinking Water	22390600-006BF25B	01/30/2025	6:30 AM	Flush Sample	✓	B0024

Relinquished By	Date	Time	Received By	Date	Time	Received Temp., °C	IRTherm. CL #
Dale Voeller	01/30/2025	11:18	jmh	01/30/2025	13:16	18.8	CL-0843

Samples submitted to Columbia Laboratories with testing requirements constitute an agreement for services in accordance with the [current terms of services](#) associated with this COC. By signing "Relinquished by" you are agreeing to these terms.

Columbia Laboratories
12423 NE Whitaker Way
Portland, OR 97230

P: (503) 254-1794
info.columbialaboratories.com

Page 1 of 1
www.columbialaboratories.com



12423 NE Whitaker Way
Portland, OR 97230
503-254-1794



Report Number: 25-001078/D001.R000
Report Date: 02/03/2025
ORELAP#: OR100028
Purchase Order: 24013061 / 0002
Project Name: Minter Bridge ES
Project No:

Case Narrative

No Case Narrative notes to report.

Laboratory Analytical Reports

Gymnasium



ANALYTICAL REPORT

Apex Laboratories, LLC

6700 S.W. Sandburg Street
Tigard, OR 97223
503-718-2323
ORELAP ID: OR100062

Tuesday, January 14, 2025

Dale Voeller
PBS Engineering and Environmental
4412 S Corbett Ave
Portland, OR 97239

RE: A4L1768 - Hillsboro School District - Minter Bridge ES/24013061

Thank you for using Apex Laboratories. We greatly appreciate your business and strive to provide the highest quality services to the environmental industry.

Enclosed are the results of analyses for work order A4L1768, which was received by the laboratory on 12/27/2024 at 2:04:00PM.

If you have any questions concerning this report or the services we offer, please feel free to contact me by email at: jwoodcock@apex-labs.com, or by phone at 503-718-2323.

Please note: All samples will be disposed of within 30 days of sample receipt, unless prior arrangements have been made.

Cooler Receipt Information		
<p><u>Acceptable Receipt Temperature is less than, or equal to, 6 degC (not frozen), or received on ice the same day as sampling.</u></p> <p>(See Cooler Receipt Form for details)</p>		
<p>Default Cooler</p>	<p>17.0</p>	<p>degC</p>

This Final Report is the official version of the data results for this sample submission, unless superseded by a subsequent, labeled amended report.

All other deliverables derived from this data, including Electronic Data Deliverables (EDDs), CLP-like forms, client requested summary sheets, and all other products are considered secondary to this report.



Apex Laboratories

The results in this report apply to the samples analyzed in accordance with the chain of custody document(s) and updated by any subsequent written communications. This analytical report must be reproduced in its entirety.

Jason Woodcock, Project Manager



ANALYTICAL REPORT

Apex Laboratories, LLC

6700 S.W. Sandburg Street
Tigard, OR 97223
503-718-2323
ORELAP ID: OR100062

<u>PBS Engineering and Environmental</u> 4412 S Corbett Ave Portland, OR 97239	Project: <u>Hillsboro School District</u> Project Number: Minter Bridge ES/24013061 Project Manager: Dale Voeller	Report ID: A4L1768 - 01 14 25 1058
---	--	---

ANALYTICAL REPORT FOR SAMPLES

SAMPLE INFORMATION

Client Sample ID	Laboratory ID	Matrix	Date Sampled	Date Received
22390604-001WB24A	A4L1768-01	Drinking Water	12/21/24 00:00	12/27/24 14:04
22390604-002DW24A	A4L1768-02	Drinking Water	12/21/24 00:00	12/27/24 14:04
22390604-003DW24A	A4L1768-03	Drinking Water	12/21/24 00:00	12/27/24 14:04
22390604-004BF24A	A4L1768-04	Drinking Water	12/21/24 00:00	12/27/24 14:04
22390604-005BF24A	A4L1768-05	Drinking Water	12/21/24 00:00	12/27/24 14:04
22390604-006BF24A	A4L1768-06	Drinking Water	12/21/24 00:00	12/27/24 14:04
22390604-007BF24A	A4L1768-07	Drinking Water	12/21/24 00:00	12/27/24 14:04
22390604-008BF24A	A4L1768-08	Drinking Water	12/21/24 00:00	12/27/24 14:04

Apex Laboratories

The results in this report apply to the samples analyzed in accordance with the chain of custody document(s) and updated by any subsequent written communications. This analytical report must be reproduced in its entirety.

Jason Woodcock, Project Manager



ANALYTICAL REPORT

Apex Laboratories, LLC

6700 S.W. Sandburg Street
Tigard, OR 97223
503-718-2323
ORELAP ID: OR100062

PBS Engineering and Environmental 4412 S Corbett Ave Portland, OR 97239	Project: Hillsboro School District Project Number: Minter Bridge ES/24013061 Project Manager: Dale Voeller	Report ID: A4L1768 - 01 14 25 1058
--	---	---

ANALYTICAL SAMPLE RESULTS

Total Metals in Drinking Water by EPA 200.8 (ICPMS)

Analyte	Sample Result	Detection Limit	Reporting Limit	Units	Dilution	Date Analyzed	Method Ref.	Notes
22390604-001WB24A (A4L1768-01)				Matrix: Drinking Water				
<u>Batch: 25A0332</u>								
Lead	ND	---	0.200	ug/L	1	01/13/25 16:40	EPA 200.8	
22390604-002DW24A (A4L1768-02)				Matrix: Drinking Water				
<u>Batch: 25A0332</u>								
Lead	ND	---	0.200	ug/L	1	01/13/25 16:42	EPA 200.8	
22390604-003DW24A (A4L1768-03)				Matrix: Drinking Water				
<u>Batch: 25A0332</u>								
Lead	ND	---	0.200	ug/L	1	01/13/25 16:44	EPA 200.8	
22390604-004BF24A (A4L1768-04)				Matrix: Drinking Water				
<u>Batch: 25A0332</u>								
Lead	ND	---	0.200	ug/L	1	01/13/25 16:46	EPA 200.8	
22390604-005BF24A (A4L1768-05)				Matrix: Drinking Water				
<u>Batch: 25A0332</u>								
Lead	ND	---	0.200	ug/L	1	01/13/25 16:47	EPA 200.8	
22390604-006BF24A (A4L1768-06)				Matrix: Drinking Water				
<u>Batch: 25A0332</u>								
Lead	0.501	---	0.200	ug/L	1	01/13/25 16:49	EPA 200.8	
22390604-007BF24A (A4L1768-07)				Matrix: Drinking Water				
<u>Batch: 25A0332</u>								
Lead	ND	---	0.200	ug/L	1	01/13/25 18:02	EPA 200.8	
22390604-008BF24A (A4L1768-08)				Matrix: Drinking Water				
<u>Batch: 25A0332</u>								
Lead	ND	---	0.200	ug/L	1	01/13/25 18:03	EPA 200.8	

Apex Laboratories

Jason Woodcock, Project Manager

The results in this report apply to the samples analyzed in accordance with the chain of custody document(s) and updated by any subsequent written communications. This analytical report must be reproduced in its entirety.



ANALYTICAL REPORT

Apex Laboratories, LLC

6700 S.W. Sandburg Street
Tigard, OR 97223
503-718-2323
ORELAP ID: OR100062

PBS Engineering and Environmental 4412 S Corbett Ave Portland, OR 97239	Project: Hillsboro School District Project Number: Minter Bridge ES/24013061 Project Manager: Dale Voeller	Report ID: A4L1768 - 01 14 25 1058
--	---	--

QUALITY CONTROL (QC) SAMPLE RESULTS

Total Metals in Drinking Water by EPA 200.8 (ICPMS)

Analyte	Result	Detection Limit	Reporting Limit	Units	Dilution	Spike Amount	Source Result	% REC	% REC Limits	RPD	RPD Limit	Notes
Batch 25A0332 - EPA 200.8 Direct Analysis						Drinking Water						
Blank (25A0332-BLK1)		Prepared: 01/10/25 14:38 Analyzed: 01/13/25 16:17										
<u>EPA 200.8</u>												
Lead	ND	---	0.200	ug/L	1	---	---	---	---	---	---	---
LCS (25A0332-BS1)		Prepared: 01/10/25 14:38 Analyzed: 01/13/25 16:19										
<u>EPA 200.8</u>												
Lead	16.2	---	0.201	ug/L	1	15.0	---	108	85 - 115%	---	---	---

No Client related Batch QC samples analyzed for this batch. See notes page for more information.

Apex Laboratories

The results in this report apply to the samples analyzed in accordance with the chain of custody document(s) and updated by any subsequent written communications. This analytical report must be reproduced in its entirety.

Jason Woodcock, Project Manager



ANALYTICAL REPORT

Apex Laboratories, LLC

6700 S.W. Sandburg Street
Tigard, OR 97223
503-718-2323
ORELAP ID: OR100062

<u>PBS Engineering and Environmental</u> 4412 S Corbett Ave Portland, OR 97239	Project: <u>Hillsboro School District</u> Project Number: Minter Bridge ES/24013061 Project Manager: Dale Voeller	Report ID: A4L1768 - 01 14 25 1058
---	--	---

SAMPLE PREPARATION INFORMATION

Total Metals in Drinking Water by EPA 200.8 (ICPMS)

Prep: EPA 200.8 Direct Analysis

Lab Number	Matrix	Method	Sampled	Prepared	Sample Initial/Final	Default Initial/Final	RL Prep Factor
<u>Batch: 25A0332</u>							
A4L1768-01	Drinking Water	EPA 200.8	12/21/24 00:00	01/10/25 14:38	10mL/10mL	10mL/10mL	1.00
A4L1768-02	Drinking Water	EPA 200.8	12/21/24 00:00	01/10/25 14:38	10mL/10mL	10mL/10mL	1.00
A4L1768-03	Drinking Water	EPA 200.8	12/21/24 00:00	01/10/25 14:38	10mL/10mL	10mL/10mL	1.00
A4L1768-04	Drinking Water	EPA 200.8	12/21/24 00:00	01/10/25 14:38	10mL/10mL	10mL/10mL	1.00
A4L1768-05	Drinking Water	EPA 200.8	12/21/24 00:00	01/10/25 14:38	10mL/10mL	10mL/10mL	1.00
A4L1768-06	Drinking Water	EPA 200.8	12/21/24 00:00	01/10/25 14:38	10mL/10mL	10mL/10mL	1.00
A4L1768-07	Drinking Water	EPA 200.8	12/21/24 00:00	01/10/25 14:38	10mL/10mL	10mL/10mL	1.00
A4L1768-08	Drinking Water	EPA 200.8	12/21/24 00:00	01/10/25 14:38	10mL/10mL	10mL/10mL	1.00

Apex Laboratories

The results in this report apply to the samples analyzed in accordance with the chain of custody document(s) and updated by any subsequent written communications. This analytical report must be reproduced in its entirety.

Jason Woodcock, Project Manager



ANALYTICAL REPORT

Apex Laboratories, LLC
6700 S.W. Sandburg Street
Tigard, OR 97223
503-718-2323
ORELAP ID: OR100062

<u>PBS Engineering and Environmental</u> 4412 S Corbett Ave Portland, OR 97239	Project: <u>Hillsboro School District</u> Project Number: Minter Bridge ES/24013061 Project Manager: Dale Voeller	Report ID: A4L1768 - 01 14 25 1058
---	--	---

QUALIFIER DEFINITIONS

Client Sample and Quality Control (QC) Sample Qualifier Definitions:

There are No Qualifiers on Sample or QC Data for this report

Apex Laboratories

The results in this report apply to the samples analyzed in accordance with the chain of custody document(s) and updated by any subsequent written communications. This analytical report must be reproduced in its entirety.

Jason Woodcock, Project Manager



ANALYTICAL REPORT

Apex Laboratories, LLC

6700 S.W. Sandburg Street
Tigard, OR 97223
503-718-2323
ORELAP ID: OR100062

<u>PBS Engineering and Environmental</u> 4412 S Corbett Ave Portland, OR 97239	Project: <u>Hillsboro School District</u> Project Number: Minter Bridge ES/24013061 Project Manager: Dale Voeller	Report ID: A4L1768 - 01 14 25 1058
---	--	---

REPORTING NOTES AND CONVENTIONS:

Abbreviations:

- DET Analyte DETECTED at or above the detection or reporting limit.
- ND Analyte NOT DETECTED at or above the detection or reporting limit.
- NR Result Not Reported.
- RPD Relative Percent Difference. RPDs for Matrix Spikes and Matrix Spike Duplicates are based on concentration, not recovery.

Detection Limits: Limit of Detection (LOD)

Limits of Detection (LODs) are normally set at a level of one half the validated Limit of Quantitation (LOQ).
If no value is listed ('----'), then the data has not been evaluated below the Reporting Limit.

Reporting Limits: Limit of Quantitation (LOQ)

Validated Limits of Quantitation (LOQs) are reported as the Reporting Limits for all analyses where the LOQ, MRL, PQL or CRL are requested. The LOQ represents a level at or above the low point of the calibration curve, that has been validated according to Apex Laboratories' comprehensive LOQ policies and procedures.

Reporting Conventions:

- Basis: Results for soil samples are generally reported on a 100% dry weight basis.
The Result Basis is listed following the units as "dry", "wet", or " " (blank) designation.
- "dry" Sample results and Reporting Limits are reported on a dry weight basis. (i.e. "ug/kg dry")
See Percent Solids section for details of dry weight analysis.
- "wet" Sample results and Reporting Limits for this analysis are normally dry weight corrected, but have not been modified in this case.
- " " Results without 'wet' or 'dry' designation are not normally dry weight corrected. These results are considered 'As Received'.

QC Source:

In cases where there is insufficient sample provided for Sample Duplicates and/or Matrix Spikes, a Lab Control Sample Duplicate (LCS Dup) may be analyzed to demonstrate accuracy and precision of the extraction batch.

Non-Client Batch QC Samples (Duplicates and Matrix Spike/Duplicates) are not included in this report. Please request a Full QC report if this data is required.

Miscellaneous Notes:

- " --- " QC results are not applicable. For example, % Recoveries for Blanks and Duplicates, % RPD for Blanks, Blank Spikes and Matrix Spikes, etc.
- " *** " Used to indicate a possible discrepancy with the Sample and Sample Duplicate results when the %RPD is not available. In this case, either the Sample or the Sample Duplicate has a reportable result for this analyte, while the other is Non Detect (ND).

Blanks:

Standard practice is to evaluate the results from Blank QC Samples down to a level equal to one half of the Reporting Limit (RL).
 Blank results for gravimetric analyses are evaluated to the Reporting Level, not to half of the Reporting Level.
 -For Blank hits falling between ½ the RL and the RL (J flagged hits), the associated sample and QC data will receive a 'B-02' qualifier.
 -For Blank hits above the RL, the associated sample and QC data will receive a 'B' qualifier, per Apex Laboratories' Blank Policy.

Apex Laboratories

The results in this report apply to the samples analyzed in accordance with the chain of custody document(s) and updated by any subsequent written communications. This analytical report must be reproduced in its entirety.

Jason Woodcock, Project Manager



ANALYTICAL REPORT

Apex Laboratories, LLC

6700 S.W. Sandburg Street
Tigard, OR 97223
503-718-2323
ORELAP ID: OR100062

PBS Engineering and Environmental

4412 S Corbett Ave
Portland, OR 97239

Project: **Hillsboro School District**

Project Number: **Minter Bridge ES/24013061**

Project Manager: **Dale Voeller**

Report ID:

A4L1768 - 01 14 25 1058

REPORTING NOTES AND CONVENTIONS (Cont.):

Blanks (Cont.):

Sample results flagged with a 'B' or 'B-02' qualifier are potentially biased high if the sample results are less than ten times the level found in the blank for inorganic analyses, or less than five times the level found in the blank for organic analyses.

'B' and 'B-02' qualifications are only applied to sample results detected above the Reporting Level.

Preparation Notes:

Mixed Matrix Samples:

Water Samples:

Water samples containing significant amounts of sediment are decanted or separated prior to extraction, and only the water portion analyzed, unless otherwise directed by the client.

Soil and Sediment Samples:

Soil and Sediment samples containing significant amounts of water are decanted prior to extraction, and only the solid portion analyzed, unless otherwise directed by the client.

Sampling and Preservation Notes:

Certain regulatory programs, such as National Pollutant Discharge Elimination System (NPDES), require that activities such as sample filtration (for dissolved metals, orthophosphate, hexavalent chromium, etc.) and testing of short hold analytes (pH, Dissolved Oxygen, etc.) be performed in the field (on-site) within a short time window. In addition, sample matrix spikes are required for some analyses, and sufficient volume must be provided, and billable site specific QC requested, if this is required. All regulatory permits should be reviewed to ensure that these requirements are being met.

Data users should be aware of which regulations pertain to the samples they submit for testing. If related sample collection activities are not approved for a particular regulatory program, results should be considered estimates. Apex Laboratories will qualify these analytes according to the most stringent requirements, however results for samples that are for non-regulatory purposes may be acceptable.

Samples that have been filtered and preserved at Apex Laboratories per client request are listed in the preparation section of the report with the date and time of filtration listed.

Apex Laboratories maintains detailed records on sample receipt, including client label verification, cooler temperature, sample preservation, hold time compliance and field filtration. Data is qualified as necessary, and the lack of qualification indicates compliance with required parameters.

Benzofluoranthene Isomer Reporting:

Due to coelutions present on the analytical column, the results reported for Benzo(b+j)fluoranthene(s) represent the concentration of both the Benzo(b)fluoranthene and Benzo(j)fluoranthene isomers. Calibration, validation and accreditation are based on the Benzo(b)fluoranthene isomer.

Apex Laboratories

Jason Woodcock, Project Manager

The results in this report apply to the samples analyzed in accordance with the chain of custody document(s) and updated by any subsequent written communications. This analytical report must be reproduced in its entirety.



ANALYTICAL REPORT

Apex Laboratories, LLC

6700 S.W. Sandburg Street
Tigard, OR 97223
503-718-2323
ORELAP ID: OR100062

<u>PBS Engineering and Environmental</u> 4412 S Corbett Ave Portland, OR 97239	Project: <u>Hillsboro School District</u> Project Number: Minter Bridge ES/24013061 Project Manager: Dale Voeller	Report ID: A4L1768 - 01 14 25 1058
---	--	---

Decanted Samples:

Soils/Sediments:

Unless TCLP analysis is required or there is notification otherwise for a specific project, all Soil and Sediments containing excess water are decanted prior to analysis in order to provide the most representative sample for analysis.

Water Samples:

Water samples containing solids and sediment may need to be decanted in order to eliminate these particulates from the water extractions. In the case of organics extractions, a solvent rinse of the container will not be performed.

Volatiles Soils (5035s)

Samples that are field preserved by 5035 for volatiles are dry weight corrected using the same dry weight correction as for normal analyses. In the case of decanted samples, the dry weight may be performed on a decanted sample, while the aliquot for 5035 may not have been treated the same way. If this is a concern, please submit separate containers for dry weight analysis for volatiles can be provided.

All samples decanted in the laboratory are noted in this report with the DCNT qualifier indicating the sample was decanted.

Apex Laboratories

The results in this report apply to the samples analyzed in accordance with the chain of custody document(s) and updated by any subsequent written communications. This analytical report must be reproduced in its entirety.

Jason Woodcock, Project Manager



ANALYTICAL REPORT

Apex Laboratories, LLC
6700 S.W. Sandburg Street
Tigard, OR 97223
503-718-2323
ORELAP ID: OR100062

Table with project details: PBS Engineering and Environmental, Hillsboro School District, Minter Bridge ES/24013061, Dale Voeller, Report ID: A4L1768 - 01 14 25 1058

LABORATORY ACCREDITATION INFORMATION

ORELAP Certification ID: OR100062 (Primary Accreditation)
EPA ID: OR01039

All methods and analytes reported from work performed at Apex Laboratories are included on Apex Laboratories' ORELAP Scope of Certification, with the exception of any analyte(s) listed below:

Apex Laboratories

Table header with columns: Matrix, Analysis, TNI_ID, Analyte, TNI_ID, Accreditation

All reported analytes are included in Apex Laboratories' current ORELAP scope.

Secondary Accreditations

Apex Laboratories also maintains reciprocal accreditation with non-TNI states (Washington DOE), as well as other state specific accreditations not listed here.

Subcontract Laboratory Accreditations

Subcontracted data falls outside of Apex Laboratories' Scope of Accreditation. Please see the Subcontract Laboratory report for full details, or contact your Project Manager for more information.

Field Testing Parameters

Results for Field Tested data are provided by the client or sampler, and fall outside of Apex Laboratories' Scope of Accreditation.

Apex Laboratories

Handwritten signature of Jason Woodcock

The results in this report apply to the samples analyzed in accordance with the chain of custody document(s) and updated by any subsequent written communications. This analytical report must be reproduced in its entirety.




ANALYTICAL REPORT

Apex Laboratories, LLC

6700 S.W. Sandburg Street
Tigard, OR 97223
503-718-2323
ORELAP ID: OR100062

PBS Engineering and Environmental 4412 S Corbett Ave Portland, OR 97239	Project: Hillsboro School District Project Number: Minter Bridge ES/24013061 Project Manager: Dale Voeller	Report ID: A4L1768 - 01 14 25 1058
--	---	---



Lead in Drinking Water Testing Program

Date Collected: 12/21/24

School Name: Minter Bridge Elementary School

Building: Gymnasium

Analysis Requested: Lead (Pb) in Drinking Water

Relinquished By/Signature: [Signature]

Received By/Signature: [Signature] APEX LABS

Email Results To: voeller@pbsusa.com

A4L1768

HILLSBORO SCHOOL DISTRICT

PBS Project: 24013061/0002

Building Number: 22390604

Date/Time: 12/23/24 11:37 AM

Date/Time: 12/27/24 1404

Turnaround Time: 10 - Day

#	Fixture Number	Sample Number	Room / Location	Description
1	001	22390604-001WB24A	Lobby – water bottle filler	
2	002	22390604-002DW24A	Lobby – drinking fountain, left	
3	003	22390604-003DW24A	Lobby – drinking fountain, right	
4	004	22390604-004BF24A	Restroom sink faucets, left to right (1)	
5	005	22390604-005BF24A	Restroom sink faucets, left to right (2)	
6	006	22390604-006BF24A	Restroom sink faucets, left to right (3)	
7	007	22390604-007BF24A	Restroom sink faucets, left to right (4)	
8	008	22390604-008BF24A	Private restroom sink faucet	
9				
10				
11				
12				
13				
14				
15				
16				
17				
18				
19				
20				

1 of 1

Apex Laboratories

Jason Woodcock, Project Manager

The results in this report apply to the samples analyzed in accordance with the chain of custody document(s) and updated by any subsequent written communications. This analytical report must be reproduced in its entirety.



ANALYTICAL REPORT

Apex Laboratories, LLC

6700 S.W. Sandburg Street
Tigard, OR 97223
503-718-2323
ORELAP ID: OR100062

PBS Engineering and Environmental 4412 S Corbett Ave Portland, OR 97239	Project: Hillsboro School District Project Number: Minter Bridge ES/24013061 Project Manager: Dale Voeller	Report ID: A4L1768 - 01 14 25 1058
--	---	---

APEX LABS COOLER RECEIPT FORM

Client: PBS Element WO#: A4L1768

Project/Project #: Minter Bridge Elementary School - Gymnasium 24013061/0002
22390604

Delivery Info:

Date/time received: 12/27/24 @ 1404 By: EST

Delivered by: Apex Client ESS FedEx UPS Radio Morgan SDS Evergreen Other

From USDA Regulated Origin? Yes No

Cooler Inspection Date/time inspected: 12/27/24 @ 1427 By: EST

Chain of Custody included? Yes No

Signed/dated by client? Yes No

Contains USDA Reg. Soils? Yes No Unsure (email RegSoils)

	Cooler #1	Cooler #2	Cooler #3	Cooler #4	Cooler #5	Cooler #6	Cooler #7
Temperature (°C)	<u>17.0</u>						
Custody seals? (Y/N)	<u>N</u>						
Received on ice? (Y/N)	<u>N</u>						
Temp. blanks? (Y/N)	<u>NA</u>						
Ice type: (Gel/Real/Other)	<u>NA</u>						
Condition (In/Out):	<u>OUT</u>						

Cooler out of temp? (Y/N) Possible reason why: Drank My Waters

Green dots applied to out of temperature samples? Yes No

Out of temperature samples form initiated? Yes No

Sample Inspection: Date/time inspected: 12/20/24 @ 1606 By: JA

All samples intact? Yes No Comments: _____

Bottle labels/COCs agree? Yes No Comments: _____

COC/container discrepancies form initiated? Yes No

Containers/volumes received appropriate for analysis? Yes No Comments: _____

Do VOA vials have visible headspace? Yes No NA

Comments: _____

Water samples: pH checked: Yes No NA pH appropriate? Yes No NA pH ID: A23117L

Comments: _____

Labeled by: JA

Witness: UN

Cooler Inspected by: JA

Form Y-003 R-02

Apex Laboratories

The results in this report apply to the samples analyzed in accordance with the chain of custody document(s) and updated by any subsequent written communications. This analytical report must be reproduced in its entirety.

Jason Woodcock, Project Manager

Laboratory Analytical Reports

Modular Classroom



ANALYTICAL REPORT

Apex Laboratories, LLC

6700 S.W. Sandburg Street
Tigard, OR 97223
503-718-2323
ORELAP ID: OR100062

Thursday, December 26, 2024

Dale Voeller
PBS Engineering and Environmental
4412 S Corbett Ave
Portland, OR 97239

RE: A4L1452 - Hillsboro School District - Minter Bridge ES/24013061/0002

Thank you for using Apex Laboratories. We greatly appreciate your business and strive to provide the highest quality services to the environmental industry.

Enclosed are the results of analyses for work order A4L1452, which was received by the laboratory on 12/17/2024 at 1:37:00PM.

If you have any questions concerning this report or the services we offer, please feel free to contact me by email at: jwoodcock@apex-labs.com, or by phone at 503-718-2323.

Please note: All samples will be disposed of within 30 days of sample receipt, unless prior arrangements have been made.

Cooler Receipt Information		
<p><u>Acceptable Receipt Temperature is less than, or equal to, 6 degC (not frozen), or received on ice the same day as sampling.</u></p> <p>(See Cooler Receipt Form for details)</p>		
<p>Default Cooler</p>	<p>17.6</p>	<p>degC</p>

This Final Report is the official version of the data results for this sample submission, unless superseded by a subsequent, labeled amended report.

All other deliverables derived from this data, including Electronic Data Deliverables (EDDs), CLP-like forms, client requested summary sheets, and all other products are considered secondary to this report.



Apex Laboratories

The results in this report apply to the samples analyzed in accordance with the chain of custody document(s) and updated by any subsequent written communications. This analytical report must be reproduced in its entirety.

Jason Woodcock, Project Manager



ANALYTICAL REPORT

Apex Laboratories, LLC

6700 S.W. Sandburg Street
Tigard, OR 97223
503-718-2323
ORELAP ID: OR100062

<u>PBS Engineering and Environmental</u> 4412 S Corbett Ave Portland, OR 97239	Project: <u>Hillsboro School District</u> Project Number: Minter Bridge ES/24013061 Project Manager: Dale Voeller	Report ID: A4L1452 - 12 26 24 1153
---	--	---

ANALYTICAL REPORT FOR SAMPLES

SAMPLE INFORMATION

Client Sample ID	Laboratory ID	Matrix	Date Sampled	Date Received
22390603-001CF24A	A4L1452-01	Drinking Water	12/14/24 00:00	12/17/24 13:37
22390603-002BF24A	A4L1452-02	Drinking Water	12/14/24 00:00	12/17/24 13:37
22390603-003CF24A	A4L1452-03	Drinking Water	12/14/24 00:00	12/17/24 13:37
22390603-004BF24A	A4L1452-04	Drinking Water	12/14/24 00:00	12/17/24 13:37

Apex Laboratories

The results in this report apply to the samples analyzed in accordance with the chain of custody document(s) and updated by any subsequent written communications. This analytical report must be reproduced in its entirety.

Jason Woodcock, Project Manager



ANALYTICAL REPORT

Apex Laboratories, LLC

6700 S.W. Sandburg Street
Tigard, OR 97223
503-718-2323
ORELAP ID: OR100062

PBS Engineering and Environmental 4412 S Corbett Ave Portland, OR 97239	Project: Hillsboro School District Project Number: Minter Bridge ES/24013061 Project Manager: Dale Voeller	Report ID: A4L1452 - 12 26 24 1153
--	---	---

ANALYTICAL SAMPLE RESULTS

Total Metals in Drinking Water by EPA 200.8 (ICPMS)

Analyte	Sample Result	Detection Limit	Reporting Limit	Units	Dilution	Date Analyzed	Method Ref.	Notes
22390603-001CF24A (A4L1452-01)				Matrix: Drinking Water				
<u>Batch: 24L0758</u>								
Lead	ND	---	0.200	ug/L	1	12/19/24 16:43	EPA 200.8	
22390603-002BF24A (A4L1452-02)				Matrix: Drinking Water				
<u>Batch: 24L0758</u>								
Lead	ND	---	0.200	ug/L	1	12/19/24 16:49	EPA 200.8	
22390603-003CF24A (A4L1452-03)				Matrix: Drinking Water				
<u>Batch: 24L0758</u>								
Lead	ND	---	0.200	ug/L	1	12/19/24 16:51	EPA 200.8	
22390603-004BF24A (A4L1452-04)				Matrix: Drinking Water				
<u>Batch: 24L0758</u>								
Lead	ND	---	0.200	ug/L	1	12/19/24 16:53	EPA 200.8	

Apex Laboratories

The results in this report apply to the samples analyzed in accordance with the chain of custody document(s) and updated by any subsequent written communications. This analytical report must be reproduced in its entirety.

Jason Woodcock, Project Manager



ANALYTICAL REPORT

Apex Laboratories, LLC

6700 S.W. Sandburg Street
Tigard, OR 97223
503-718-2323
ORELAP ID: OR100062

<u>PBS Engineering and Environmental</u> 4412 S Corbett Ave Portland, OR 97239	Project: <u>Hillsboro School District</u> Project Number: Minter Bridge ES/24013061 Project Manager: Dale Voeller	Report ID: A4L1452 - 12 26 24 1153
---	--	---

QUALITY CONTROL (QC) SAMPLE RESULTS

Total Metals in Drinking Water by EPA 200.8 (ICPMS)

Analyte	Result	Detection Limit	Reporting Limit	Units	Dilution	Spike Amount	Source Result	% REC	% REC Limits	RPD	RPD Limit	Notes
Batch 24L0758 - EPA 200.8 Direct Analysis						Drinking Water						
Blank (24L0758-BLK1)		Prepared: 12/19/24 14:58 Analyzed: 12/19/24 16:40										
<u>EPA 200.8</u>												
Lead	ND	---	0.200	ug/L	1	---	---	---	---	---	---	---
LCS (24L0758-BS1)		Prepared: 12/19/24 14:58 Analyzed: 12/19/24 16:42										
<u>EPA 200.8</u>												
Lead	14.3	---	0.201	ug/L	1	15.0	---	95	85 - 115%	---	---	---
Duplicate (24L0758-DUP1)		Prepared: 12/19/24 14:58 Analyzed: 12/19/24 16:45										
<u>QC Source Sample: 22390603-001CF24A (A4L1452-01)</u>												
<u>EPA 200.8</u>												
Lead	ND	---	0.200	ug/L	1	---	0.131	---	---	***	20%	---
Matrix Spike (24L0758-MS1)		Prepared: 12/19/24 14:58 Analyzed: 12/19/24 16:47										
<u>QC Source Sample: 22390603-001CF24A (A4L1452-01)</u>												
<u>EPA 200.8</u>												
Lead	13.9	---	0.201	ug/L	1	15.0	0.131	92	70 - 130%	---	---	---

Apex Laboratories

The results in this report apply to the samples analyzed in accordance with the chain of custody document(s) and updated by any subsequent written communications. This analytical report must be reproduced in its entirety.

Jason Woodcock, Project Manager



ANALYTICAL REPORT

Apex Laboratories, LLC

6700 S.W. Sandburg Street
Tigard, OR 97223
503-718-2323
ORELAP ID: OR100062

<u>PBS Engineering and Environmental</u> 4412 S Corbett Ave Portland, OR 97239	Project: <u>Hillsboro School District</u> Project Number: Minter Bridge ES/24013061 Project Manager: Dale Voeller	Report ID: A4L1452 - 12 26 24 1153
---	--	---

SAMPLE PREPARATION INFORMATION

Total Metals in Drinking Water by EPA 200.8 (ICPMS)

Prep: EPA 200.8 Direct Analysis

Lab Number	Matrix	Method	Sampled	Prepared	Sample Initial/Final	Default Initial/Final	RL Prep Factor
<u>Batch: 24L0758</u>							
A4L1452-01	Drinking Water	EPA 200.8	12/14/24 00:00	12/19/24 14:58	10mL/10mL	10mL/10mL	1.00
A4L1452-02	Drinking Water	EPA 200.8	12/14/24 00:00	12/19/24 14:58	10mL/10mL	10mL/10mL	1.00
A4L1452-03	Drinking Water	EPA 200.8	12/14/24 00:00	12/19/24 14:58	10mL/10mL	10mL/10mL	1.00
A4L1452-04	Drinking Water	EPA 200.8	12/14/24 00:00	12/19/24 14:58	10mL/10mL	10mL/10mL	1.00

Apex Laboratories

The results in this report apply to the samples analyzed in accordance with the chain of custody document(s) and updated by any subsequent written communications. This analytical report must be reproduced in its entirety.

Jason Woodcock, Project Manager



ANALYTICAL REPORT

Apex Laboratories, LLC

6700 S.W. Sandburg Street
Tigard, OR 97223
503-718-2323
ORELAP ID: OR100062

<u>PBS Engineering and Environmental</u> 4412 S Corbett Ave Portland, OR 97239	Project: <u>Hillsboro School District</u> Project Number: Minter Bridge ES/24013061 Project Manager: Dale Voeller	<u>Report ID:</u> A4L1452 - 12 26 24 1153
---	--	---

QUALIFIER DEFINITIONS

Client Sample and Quality Control (QC) Sample Qualifier Definitions:

There are No Qualifiers on Sample or QC Data for this report

Apex Laboratories

The results in this report apply to the samples analyzed in accordance with the chain of custody document(s) and updated by any subsequent written communications. This analytical report must be reproduced in its entirety.

Jason Woodcock, Project Manager



ANALYTICAL REPORT

Apex Laboratories, LLC

6700 S.W. Sandburg Street
Tigard, OR 97223
503-718-2323
ORELAP ID: OR100062

<u>PBS Engineering and Environmental</u> 4412 S Corbett Ave Portland, OR 97239	Project: <u>Hillsboro School District</u> Project Number: Minter Bridge ES/24013061 Project Manager: Dale Voeller	Report ID: A4L1452 - 12 26 24 1153
---	--	---

REPORTING NOTES AND CONVENTIONS:

Abbreviations:

- DET Analyte DETECTED at or above the detection or reporting limit.
- ND Analyte NOT DETECTED at or above the detection or reporting limit.
- NR Result Not Reported.
- RPD Relative Percent Difference. RPDs for Matrix Spikes and Matrix Spike Duplicates are based on concentration, not recovery.

Detection Limits: Limit of Detection (LOD)

Limits of Detection (LODs) are normally set at a level of one half the validated Limit of Quantitation (LOQ).
If no value is listed ('----'), then the data has not been evaluated below the Reporting Limit.

Reporting Limits: Limit of Quantitation (LOQ)

Validated Limits of Quantitation (LOQs) are reported as the Reporting Limits for all analyses where the LOQ, MRL, PQL or CRL are requested. The LOQ represents a level at or above the low point of the calibration curve, that has been validated according to Apex Laboratories' comprehensive LOQ policies and procedures.

Reporting Conventions:

- Basis: Results for soil samples are generally reported on a 100% dry weight basis.
The Result Basis is listed following the units as "dry", "wet", or "" (blank) designation.
- "dry" Sample results and Reporting Limits are reported on a dry weight basis. (i.e. "ug/kg dry")
See Percent Solids section for details of dry weight analysis.
- "wet" Sample results and Reporting Limits for this analysis are normally dry weight corrected, but have not been modified in this case.
- " " Results without 'wet' or 'dry' designation are not normally dry weight corrected. These results are considered 'As Received'.

QC Source:

In cases where there is insufficient sample provided for Sample Duplicates and/or Matrix Spikes, a Lab Control Sample Duplicate (LCS Dup) may be analyzed to demonstrate accuracy and precision of the extraction batch.

Non-Client Batch QC Samples (Duplicates and Matrix Spike/Duplicates) are not included in this report. Please request a Full QC report if this data is required.

Miscellaneous Notes:

- " --- " QC results are not applicable. For example, % Recoveries for Blanks and Duplicates, % RPD for Blanks, Blank Spikes and Matrix Spikes, etc.
- " *** " Used to indicate a possible discrepancy with the Sample and Sample Duplicate results when the %RPD is not available. In this case, either the Sample or the Sample Duplicate has a reportable result for this analyte, while the other is Non Detect (ND).

Blanks:

Standard practice is to evaluate the results from Blank QC Samples down to a level equal to one half of the Reporting Limit (RL).
 Blank results for gravimetric analyses are evaluated to the Reporting Level, not to half of the Reporting Level.
 -For Blank hits falling between 1/2 the RL and the RL (J flagged hits), the associated sample and QC data will receive a 'B-02' qualifier.
 -For Blank hits above the RL, the associated sample and QC data will receive a 'B' qualifier, per Apex Laboratories' Blank Policy.

Apex Laboratories

The results in this report apply to the samples analyzed in accordance with the chain of custody document(s) and updated by any subsequent written communications. This analytical report must be reproduced in its entirety.



ANALYTICAL REPORT

Apex Laboratories, LLC

6700 S.W. Sandburg Street
Tigard, OR 97223
503-718-2323
ORELAP ID: OR100062

PBS Engineering and Environmental

4412 S Corbett Ave
Portland, OR 97239

Project: **Hillsboro School District**

Project Number: **Minter Bridge ES/24013061**

Project Manager: **Dale Voeller**

Report ID:

A4L1452 - 12 26 24 1153

REPORTING NOTES AND CONVENTIONS (Cont.):

Blanks (Cont.):

Sample results flagged with a 'B' or 'B-02' qualifier are potentially biased high if the sample results are less than ten times the level found in the blank for inorganic analyses, or less than five times the level found in the blank for organic analyses.

'B' and 'B-02' qualifications are only applied to sample results detected above the Reporting Level.

Preparation Notes:

Mixed Matrix Samples:

Water Samples:

Water samples containing significant amounts of sediment are decanted or separated prior to extraction, and only the water portion analyzed, unless otherwise directed by the client.

Soil and Sediment Samples:

Soil and Sediment samples containing significant amounts of water are decanted prior to extraction, and only the solid portion analyzed, unless otherwise directed by the client.

Sampling and Preservation Notes:

Certain regulatory programs, such as National Pollutant Discharge Elimination System (NPDES), require that activities such as sample filtration (for dissolved metals, orthophosphate, hexavalent chromium, etc.) and testing of short hold analytes (pH, Dissolved Oxygen, etc.) be performed in the field (on-site) within a short time window. In addition, sample matrix spikes are required for some analyses, and sufficient volume must be provided, and billable site specific QC requested, if this is required. All regulatory permits should be reviewed to ensure that these requirements are being met.

Data users should be aware of which regulations pertain to the samples they submit for testing. If related sample collection activities are not approved for a particular regulatory program, results should be considered estimates. Apex Laboratories will qualify these analytes according to the most stringent requirements, however results for samples that are for non-regulatory purposes may be acceptable.

Samples that have been filtered and preserved at Apex Laboratories per client request are listed in the preparation section of the report with the date and time of filtration listed.

Apex Laboratories maintains detailed records on sample receipt, including client label verification, cooler temperature, sample preservation, hold time compliance and field filtration. Data is qualified as necessary, and the lack of qualification indicates compliance with required parameters.

Benzofluoranthene Isomer Reporting:

Due to coelutions present on the analytical column, the results reported for Benzo(b+j)fluoranthene(s) represent the concentration of both the Benzo(b)fluoranthene and Benzo(j)fluoranthene isomers. Calibration, validation and accreditation are based on the Benzo(b)fluoranthene isomer.

Apex Laboratories

The results in this report apply to the samples analyzed in accordance with the chain of custody document(s) and updated by any subsequent written communications. This analytical report must be reproduced in its entirety.

Jason Woodcock, Project Manager



ANALYTICAL REPORT

Apex Laboratories, LLC

6700 S.W. Sandburg Street
Tigard, OR 97223
503-718-2323
ORELAP ID: OR100062

<u>PBS Engineering and Environmental</u> 4412 S Corbett Ave Portland, OR 97239	Project: <u>Hillsboro School District</u> Project Number: Minter Bridge ES/24013061 Project Manager: Dale Voeller	Report ID: A4L1452 - 12 26 24 1153
---	--	---

Decanted Samples:

Soils/Sediments:

Unless TCLP analysis is required or there is notification otherwise for a specific project, all Soil and Sediments containing excess water are decanted prior to analysis in order to provide the most representative sample for analysis.

Water Samples:

Water samples containing solids and sediment may need to be decanted in order to eliminate these particulates from the water extractions. In the case of organics extractions, a solvent rinse of the container will not be performed.

Volatiles Soils (5035s)

Samples that are field preserved by 5035 for volatiles are dry weight corrected using the same dry weight correction as for normal analyses. In the case of decanted samples, the dry weight may be performed on a decanted sample, while the aliquot for 5035 may not have been treated the same way. If this is a concern, please submit separate containers for dry weight analysis for volatiles can be provided.

All samples decanted in the laboratory are noted in this report with the DCNT qualifier indicating the sample was decanted.

Apex Laboratories

The results in this report apply to the samples analyzed in accordance with the chain of custody document(s) and updated by any subsequent written communications. This analytical report must be reproduced in its entirety.

Jason Woodcock, Project Manager



ANALYTICAL REPORT

Apex Laboratories, LLC
6700 S.W. Sandburg Street
Tigard, OR 97223
503-718-2323
ORELAP ID: OR100062

Table with project details: PBS Engineering and Environmental, Hillsboro School District, Minter Bridge ES/24013061, Dale Voeller, Report ID: A4L1452 - 12 26 24 1153

LABORATORY ACCREDITATION INFORMATION

ORELAP Certification ID: OR100062 (Primary Accreditation)
EPA ID: OR01039

All methods and analytes reported from work performed at Apex Laboratories are included on Apex Laboratories' ORELAP Scope of Certification, with the exception of any analyte(s) listed below:

Apex Laboratories

Table header with columns: Matrix, Analysis, TNI_ID, Analyte, TNI_ID, Accreditation

All reported analytes are included in Apex Laboratories' current ORELAP scope.

Secondary Accreditations

Apex Laboratories also maintains reciprocal accreditation with non-TNI states (Washington DOE), as well as other state specific accreditations not listed here.

Subcontract Laboratory Accreditations

Subcontracted data falls outside of Apex Laboratories' Scope of Accreditation. Please see the Subcontract Laboratory report for full details, or contact your Project Manager for more information.

Field Testing Parameters

Results for Field Tested data are provided by the client or sampler, and fall outside of Apex Laboratories' Scope of Accreditation.

Apex Laboratories

Handwritten signature of Jason Woodcock

The results in this report apply to the samples analyzed in accordance with the chain of custody document(s) and updated by any subsequent written communications. This analytical report must be reproduced in its entirety.

Jason Woodcock, Project Manager




ANALYTICAL REPORT

Apex Laboratories, LLC

6700 S.W. Sandburg Street
Tigard, OR 97223
503-718-2323
ORELAP ID: OR100062

PBS Engineering and Environmental 4412 S Corbett Ave Portland, OR 97239	Project: Hillsboro School District Project Number: Minter Bridge ES/24013061 Project Manager: Dale Voeller	Report ID: A4L1452 - 12 26 24 1153
--	---	---



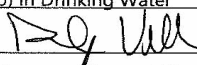
Lead in Drinking Water Testing Program

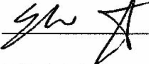
Date Collected: 12/14/2024

School Name: Minter Bridge Elementary School

Building: Modular Building

Analysis Requested: Lead (Pb) in Drinking Water

Relinquished By/Signature: 

Received By/Signature:  **APEX LABS**

Email Results To: voeller@pbsusa.com

A4L1452

HILLSBORO SCHOOL DISTRICT

PBS Project: 24013061/0002

Building Number: 22390603

Date/Time: 12/16/24 ^{2:20 PM} ~~24~~

Date/Time: 12/17/24 **1337**

Turnaround Time: 10 - Day

#	Fixture Number	Sample Number	Room / Location	Description
1	001	22390603-001CF24A	Left Classroom (Room B) - classroom faucet	
2	002	22390603-002BF24A	Left Classroom (Room B) - restroom sink faucet	
3	003	22390603-003CF24A	Right Classroom (Room A) - classroom faucet	
4	004	22390603-003BF24A	Right Classroom (Room A) - restroom sink faucet	
5				
6				
7				
8				
9				
10				
11				
12				
13				
14				
15				
16				
17				
18				
19				
20				

1 of 1

Apex Laboratories

Jason Woodcock, Project Manager

The results in this report apply to the samples analyzed in accordance with the chain of custody document(s) and updated by any subsequent written communications. This analytical report must be reproduced in its entirety.



ANALYTICAL REPORT

Apex Laboratories, LLC

6700 S.W. Sandburg Street
Tigard, OR 97223
503-718-2323
ORELAP ID: OR100062

PBS Engineering and Environmental 4412 S Corbett Ave Portland, OR 97239	Project: Hillsboro School District Project Number: Minter Bridge ES/24013061 Project Manager: Dale Voeller	Report ID: A4L1452 - 12 26 24 1153
--	---	---

APEX LABS COOLER RECEIPT FORM

Client: DBS Element WO#: A4L1452
 Project/Project #: Minter Bridge Elementary School Modular Buildings
24013061/0002

Delivery Info:
 Date/time received: 12/17/24 @ 1337 By: EST
 Delivered by: Apex Client ESS FedEx UPS Radio Morgan SDS Evergreen Other

From USDA Regulated Origin? Yes No

Cooler Inspection Date/time inspected: 12/17/24 @ 1417 By: EST

Chain of Custody included? Yes No
 Signed/dated by client? Yes No
 Contains USDA Reg. Soils? Yes No Unsure (email RegSoils)

	Cooler #1	Cooler #2	Cooler #3	Cooler #4	Cooler #5	Cooler #6	Cooler #7
Temperature (°C)	<u>17.6</u>						
Custody seals? (Y/N)	<u>N</u>						
Received on ice? (Y/N)	<u>N</u>						
Temp. blanks? (Y/N)	<u>N</u>						
Ice type: (Gel/Real/Other)	<u>NA</u>						
Condition (In/Out):	<u>OUT</u>						

Cooler out of temp? (Y/N) Possible reason why: Drinking water S

Green dots applied to out of temperature samples? Yes No

Out of temperature samples form initiated? Yes No

Sample Inspection: Date/time inspected: 12/17/24 @ 17:57 By: RAM

All samples intact? Yes No Comments: _____

Bottle labels/COCs agree? Yes No Comments: RAM:24
COC reads sample numbers as 22390603-003BF24A
for Fixture Number 004, Cont. reads 22390603-004BF24A

COC/container discrepancies form initiated? Yes No

Containers/volumes received appropriate for analysis? Yes No Comments: _____

Do VOA vials have visible headspace? Yes No NA

Comments: _____

Water samples: pH checked: Yes No NA pH appropriate? Yes No NA pH ID: A231172

Comments: _____

Labeled by: RAM Witness: WV Cooler Inspected by: RAM
 Form Y-003 R-02

Apex Laboratories

Jason Woodcock, Project Manager

The results in this report apply to the samples analyzed in accordance with the chain of custody document(s) and updated by any subsequent written communications. This analytical report must be reproduced in its entirety.