

2024-2025

# ANNUAL REPORT

BRAWERMAN WEST  
ELEMENTARY SCHOOL  
*of* WILSHIRE BOULEVARD TEMPLE

# Head of School Cabinet

It has been an honor for me to serve as the Head of School Cabinet Chair. The role of the Cabinet is not to make decisions or get involved in day-to-day operations—it is about being present, listening closely, and offering honest feedback from the perspective of the parent community. In that way, we truly got to live out this year's theme of *Hineini*, here I am.



The Cabinet is made up of a small group of engaged parent leaders, chosen to reflect a variety of perspectives. We meet several times throughout the year—sometimes on schedule, and sometimes in response to the evolving needs of the school. In every instance, our goal is to be a sounding board for Brandon and the leadership team: to listen, reflect, and help move ideas forward in a thoughtful, constructive way.

Of the many topics we have discussed to constantly improve our school, social media is at the forefront. We strive to find a balance between the growing reliance on digital devices and apps and the prioritization of our children's mental health. Finding the right balance is not simple, but the commitment to wrestle with these issues collaboratively—with care and clarity—felt deeply meaningful.

As both a Cabinet member and a parent, I'm incredibly proud of the way our community has shown up for one another this year. Brawerman West has remained a school where our kids not only receive an excellent education, but are also able to embrace their Jewish identity in a safe, warm environment. Given the realities of the post October 7 world, this has never been more important.

Brandon's leadership continues to set the tone for a community that is open, forward-thinking, and grounded in values. Together with my fellow members of the Cabinet, we are able to support this mission and work together to pave the way for a continued meaningful future at Brawerman West.

Andrew Altshule  
Head of School Cabinet Chair

## Head of School Cabinet

Gabriel Halimi, Linda Foley, Elizabeth Sands,  
Stephanie Teitelbaum, Andrew Altshule  
(Cabinet Chair), Jayme Bolden, Sara Morris



# Parent Association

*Hineini*. I can not think of a theme more aptly fitting for our school, or a school community that more aptly fits our theme. For the 2024-2025 school year, our community showed up—in profound and powerful ways—despite unprecedented events.



We supported our school, our community, and Israel. We were able to do all of this because of the indefatigable dedication and leadership of our PA Vice Presidents and the treasure trove of parent volunteers who committed their time and energy throughout the year.

Our Room and *Mitzvah* Representatives helped us plan for events and were always ready with a hug or meal, in times of celebration or need.

The Jewish Celebrations Committee made every holiday and tradition so special. From *Rosh HaShanah* apples and honey to Passover model *sedarim* to an epic party for Israel's birthday complete with a petting zoo, *shuk*, and dance party.

Mixed in with all these celebrations, the *Tikkun Olam* Committee tirelessly organized drive after drive from Halloween candy and Thanksgiving baskets to holiday toys, books, and clothes.

Our PA Hospitality Committee supported all of our sponsored events with delicious food and stunning decor, and the Faculty Appreciation Committee showed endless creativity ensuring our teachers and administrators felt loved all year long with special lunches and surprise treats.

Our year would not have been the same without our incredible Fundraising Committee. We had a busy and buzzy Boutique and our ever-popular Bake Sale raised \$5,000 for the IDF. Instead of bringing the Book Fair to campus, we brought all of our students to Children's Book World. Our kids bought books for themselves and donated books for libraries lost in the fires. Finally, in late spring, we hosted our colossal party on the Pier for all campuses.

This year our Grandparents and Special Friends Committee hosted individual events for Grades K-3. Passover *sedarim*, the Living Museum, and Country of Origin were special ways to share our amazing school with our amazing families. It was definitely a Herculean effort!

Our newly formed Community Committee organized events at OBKLA, and together we made hundreds of meals to support those in need. We also co-hosted a breakfast and lecture with the WBT ECCs, featuring renowned parenting expert, Dr. Becky.

Three behind-the-scenes and tireless committees were Library, which quickly reshelfed all returned books so they could be rechecked out; Lost and Found, which efficiently returned favorite items to our kiddos; and *Challah*, which helped make celebrating *Shabbat* more special.

From hoops and tug-of-war to an epic closing ceremony, Sports Day did it all. The enthusiastic Sports Day Committee and the hundred-plus parent volunteers helped run the event like true professionals!

Every single minute everyone spent on campus and behind the scenes brought *Hineini* to life in the most incredible ways. Thank you. Thank you. Thank you.

Stephanie Teitelbaum  
PA President



## MESSAGE FROM The Head of School

Our theme for the 2024-2025 school year was *Hineini*, defined as “Here I am.” More than simply being present, *Hineini* means being fully engaged—mentally, emotionally, spiritually. It represents a commitment to showing up for each other, for our community, for our children, and for our future.



This year, the meaning of *Hineini* was tested and ultimately deepened by events that reminded us what truly matters. The devastating wildfires that swept through Los Angeles displaced over fifty of our families and staff members, with nine experiencing the total loss of their homes. In that moment of crisis, our Brawerman West community embodied *Hineini* in its truest sense. We didn't hesitate—we took action.

Knowing that school represented safety and love for our students and families, we kept our doors open, built flexibility to meet the varying needs of displaced families, and wrapped our arms around those most impacted. Working with Wilshire Boulevard Temple, we provided additional tuition assistance for the coming year and reprinted yearbooks for current students and alumni who lost treasured memories to the flames. In witnessing our community's immediate response, we were reminded that true presence requires creating space in our lives for others, especially when circumstances demand we move beyond our own immediate concerns.

This lesson has never been more relevant than in our current time, where attention is increasingly fragmented by technology and distracted by troubling news, particularly regarding antisemitism. Yet at Brawerman West, we respond not with fear, but with purpose. We understand that the antidote to isolation and hatred is not withdrawal, but the deepening of community connection and the strengthening of identity.

At Brawerman West, we don't merely teach about Jewish identity—we live it. We create what sociologist Émile Durkheim called “collective effervescence”—those powerful shared experiences that elevate us from the ordinary into the sacred. When our community gathers for *Shabbat*, celebrates holidays together, and supports each other through life's challenges, we build a community of purpose and belonging.

Our community is stronger than ever, and that strength is deeply rooted in the academic excellence that we collectively strive for. This year marked the full implementation of our Math in Focus curriculum across all grade levels, based on Singapore's highly effective approach. This program does more than teach mathematics—it develops problem-solving skills that transcend the classroom. Through careful progression from concrete to pictorial to abstract thinking, students learn to approach challenges with confidence and creativity, cultivating innovative thinking that aligns with our deeper mission of preparing thoughtful, capable citizens.

The strength of our academic program rests on our exceptional faculty—a desirable blend of veteran master teachers and talented newly credentialed educators, and everything in between. Recognizing that retaining and supporting outstanding

teachers requires investment, we have prioritized competitive compensation and meaningful professional development. This year, we introduced a simple but transformative addition: daily lunch from our hot lunch program for all faculty. We not only have helped fill their stomachs each day, but we have also created daily opportunities at the lunch tables for conversation, collaboration, and community that we have not seen previously.

Brawerman West has the advantage of being part of the engaged and robust community of Wilshire Boulevard Temple. Senior Rabbi Joel Nickerson has assumed his new role this year, alongside the Temple leadership team, which includes Executive Director of Education Naomi Reem, Executive Director Donna Nadel, Wilshire Boulevard Temple Board President Deborah Dragon, and the Chair of the Education and School Governance Committee Claire Goldsmith. They are spearheading a new era of engagement across the congregation, directly benefiting the school and inspiring me and the other administrators to be innovative in fulfilling our mission.

When I walk through our hallways, I am continually reminded of what distinguishes Brawerman West. It's not merely our academic achievements or our beautifully upgraded Leder Playground and Schwartz Family Turf Field. It's the sight of students gathering for *Shabbat*, arms linked, voices raised in singing *Hashkiveinu*. It's the poised sixth grader explaining Jewish traditions to prospective families during tours. It's kindergarteners mastering Hebrew songs after working with Math in Focus manipulatives. It's seeing our ability to be simultaneously modern and traditional, embracing technological advancement while building deep intergenerational connections. It's witnessing the beautiful synthesis of academic excellence, social-emotional learning, and joyful Judaism.

This brings me back to the deeper meaning of *Hineini*. As Rabbi Richard Jacobs teaches us, to truly say “I am here” requires “conscious, sustained effort and attention, and a willingness to be authentic, awake, attuned.” In our busy lives, it becomes easy to rush past moments of genuine connection, allowing the urgent to crowd out the truly important. But at Brawerman West, we intentionally create space for what matters most.

As we face an uncertain world filled with competing distractions and rising challenges, we need Brawerman more than ever—for our current thriving community and for generations to come. Our commitment to saying *Hineini*—to being truly present for each other, creating space for what matters most, and building a future worthy of our past—has never been more essential.

Each day, I witness the fruits of our collective investment: students who approach challenges with confidence, teachers who inspire with passion, and families who support one another through all seasons. This is the Brawerman difference—a community that doesn't just weather storms, but emerges stronger.

Thank you for believing in this vision and for making it your own. Your partnership transforms possibility into reality, and for that, I am deeply grateful.

BRANDON COHEN

# BRAWERMAN WEST SPOTLIGHTS

Budding mathematicians at Brawerman West are developing stronger problem-solving skills, deeper mathematical understanding, and greater confidence in math thanks to our transition to Singapore's Math in Focus curriculum. After extensive research by our Instructional Leadership Team, we launched the program to better align with our educational goals. Using visual models and hands-on activities, students engage deeply with abstract concepts for lasting retention. Beginning with faculty orientation in August, teachers received intensive training and ongoing support from specialist Shelly DuBose throughout the year, ensuring a smooth and effective rollout. Faculty across grade levels participated in the decision to adopt Math in Focus and have enthusiastically embraced this enhanced approach to math instruction and learning.

## MATH IN FOCUS

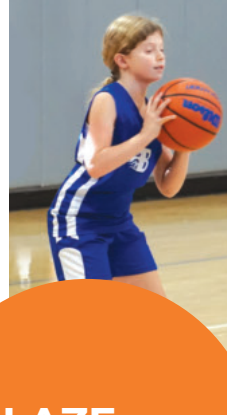


## BOKER TOV BRAWERMAN



*Boker Tov Brawerman (BTB) is our weekly student newscast. Under the guidance of Grade 4 Teacher and Broadcast Media Coordinator Joshua Karbelnig, upper-grade students handle every aspect of production—from writing the script, reading from a teleprompter, and filming with a state-of-the-art 4K camera and green screen. Now nearing its 400th episode in 12 years, BTB blends humor with important weekly updates. Beyond media skills, it fosters communication, confidence, and critical thinking. By reporting the news and engaging with the stories of their peers, students across the school learn to connect with their community, recognize its rhythms, and embrace responsibility and leadership. Popular segments include creative skits, movie parodies, and interviews with students and faculty. Local news strengthens small communities—and through BTB, our students experience the power of storytelling and shared information from an early age.*





## BLAZE ATHLETICS

With over 200 student-athletes participating, Brawerman Blaze Athletics dribbled, spiked, passed, and sprinted through an unforgettable 2024-2025 school year. Grades 4-6 co-ed flag football and girls' basketball teams wrapped up the fall with winning records. Winter brought momentum as our Grade 6 girls' volleyball team served up aces to win the Coastal Canyon League championship. And in spring, our 5/6 co-ed soccer team netted goal after goal for an undefeated season. Through it all, our athletes showed what it means to play the Brawerman way—with integrity, teamwork, and respect. Good sportsmanship rained like confetti at a championship parade. Coach Barry, Coach Kamer, and Coach Levenson were beyond proud to coach this incredible group. Go Blaze!



## AFTER SCHOOL ENRICHMENTS

Last year, our optional after-school enrichment programs were a great success, offering engaging activities that students loved. Highlights included:

- **Children's Sports Academy**, where students worked on fitness, athletic skills, and a love for sports.
- **Artists' Workshop**, introducing media like watercolor, acrylics, papier-mâché, and clay for creating two- and three-dimensional art.
- **Musical Theater**, where 45 students learned all aspects of production and performed *Charlie and the Chocolate Factory* for family and friends at the end of the semester.
- **Cheer**, a popular new addition, where the Brawerman West Cheer Squad mastered cheers, chants, routines, and stunts. Go Blaze!

Our enrichment programs inspire creativity, teamwork, and passion while always ensuring students have fun.







## GRADE 6 ISRAEL WEEK

This year, our Grade 6 students could not visit Israel in person, posing the challenge of how to strengthen their bond with Israel without physically being there. Guided by our theme of *Hineini*, our Israel Engagement Specialist Elhanan Brown enthusiastically led an immersive alternative experience right here in Los Angeles.

Students viewed the Dead Sea Scrolls at the Reagan Library and embarked on scavenger hunts at the Skirball Cultural Center. They cooked Israeli foods, made music in drum circles, explored *Kabbalah* inspired by Tzfat, and placed personal notes in a replica of the *Kotel* they built themselves in the classroom. This week of learning and celebration left students with a lasting connection to Israel, a strengthened sense of Jewish identity, and bonds across campuses.

# BRAWERMAN WEST 25 Year Silver Anniversary

This year, Brawerman West proudly celebrated its momentous 25 Year Silver Anniversary. To honor the incredible legacy of our school, we hosted a spectacular gala on October 19, 2024. More than 400 guests—including current and alumni families, faculty, Wilshire Boulevard Temple leadership, and founding Head of School Nadine Breuer—gathered for an unforgettable evening at Citizen News.

The evening sparkled with a silver theme, featuring a live band, lots of dancing, and exquisite artisanal cuisine catered by Mother Wolf. Guests, dressed in their finest cocktail attire, enjoyed heartfelt words of gratitude and reflection from Executive Director of Education Naomi Reem, Head of School Brandon Cohen, and Senior Rabbi Joel Nickerson, all celebrating the remarkable growth of our school community.

The event was filled with making memories, tons of joy, and a silent auction that helped contribute to the school's endowment. Thank you to everyone who made this milestone celebration unforgettable!







# Matriculation

**OUR ALUMNI  
HAVE ATTENDED**

MORE THAN  
**80**

**DIFFERENT  
COLLEGES**



American University  
Art Center College of Design  
Bard College  
Barnard College  
Belmont University  
Boston College  
Boston University  
Boulder Business School  
Brown University  
Cal Poly, San Luis Obispo  
California State University,  
Northridge  
Carleton College  
Carnegie Mellon University  
Chapman University  
Claremont McKenna College  
Colby College  
Colgate University  
Colorado College  
Columbia University  
Cornell University  
Dartmouth College  
Drexel University  
Elon University  
Emory University  
Eugene Lang College  
FIDM  
George Washington University  
Georgia Institute of Technology

Hamilton College  
Harvard University  
Hobart and William Smith  
Colleges  
Indiana University  
Ithaca College  
Kenyon College  
Lehigh University  
Lewis and Clark College  
Loyola Marymount University  
Michigan State University  
Middlebury College  
New York University  
Northeastern University  
Northwestern University  
Oregon State University  
Otis College of Art and Design  
Parsons School of Design  
Pitzer College  
Pomona College  
Princeton University  
Purdue University  
Rhode Island School of Design  
Rutgers University  
San Jose State University  
Scripps College  
Smith College  
Southern Methodist University  
Stanford University

Syracuse University  
Texas A&M University  
Tufts University  
Tulane University  
University of Arizona  
University of California, Berkeley  
University of California, Los Angeles  
University of California, Riverside  
University of California, Santa Barbara  
University of California, San Diego  
University of California, Santa Cruz  
University of Chicago  
University of Colorado, Boulder  
University of Denver  
University of Miami  
University of Michigan  
University of Oregon  
University of Pennsylvania  
University of Richmond  
University of Southern California  
University of St. Andrews  
University of Texas at Austin  
University of Vermont  
University of Wisconsin  
Vanderbilt University  
Washington University in St. Louis  
Wesleyan University

Brawerman West students  
matriculate to top-tier  
independent schools  
in Los Angeles.

SECONDARY SCHOOLS	2023-2025
The Archer School for Girls	3
Brentwood School	19
Crossroads School	6
Harvard-Westlake School	12
Milken Community School	35
Windward School	23
Public	7
Other*	3
<b>TOTAL</b>	<b>108</b>

\*1-2 student(s) between 2023-2025 has matriculated  
to Campbell Hall and Wildwood School.



# *Mazal tov* TO THE BRAWERMAN WEST ALUMNI Class of 2019!

THEY ARE ATTENDING THE FOLLOWING COLLEGES AND UNIVERSITIES:

Carleton College  
Carnegie Mellon University  
Cornell University  
Emory University  
George Washington University  
Harvard University  
Hobart and William Smith Colleges  
Kenyon College  
New York University  
Smith College  
Southern Methodist University

Stanford University  
Syracuse University  
University of California, Berkeley  
University of Chicago  
University of Miami  
University of Michigan  
University of Richmond  
University of Southern California  
Vanderbilt University  
Washington University in St. Louis



**ALUMNI**  
Sushi and Shmooze





# ALUMNI SPOTLIGHT

## Eden Yadegar CLASS OF 2015



### How did your education at Brawerman help solidify your connection to Judaism and Israel?

I could talk about this forever! I'm a firm believer that empowered Jews empower Jews. I don't think I could have survived—yet alone become an active part of the Jewish community combating antisemitism on campus at Columbia this past year—if it weren't for the tools and roots Brawerman gave me. Not only am I incredibly grateful and indebted to Brawerman for actually teaching me the fundamentals of Judaism and giving me the ability to connect with the Jewish peoplehood, but also for teaching me the joy of Judaism. Before anything else I am a Jew and I feel so confident saying that because of the way Brawerman raised me.

### How have you advocated for Israel since October 7?

My advocacy at Columbia University began with Students Supporting Israel which is a grassroots student-led club. I've been able to work with so many amazing Jewish students and faculty members, hosting rallies, vigils, protests, and a lot of educational events. Everything from hosting a demonstration in honor of the lives lost on October 7 to hosting a delegation of Israeli and Arab peace activists to look at what the future of the Middle East looks like. I am also currently running for the World Zionist Congress on the Aish slate. I feel very blessed that I have been able to reach such a large audience to speak on something that is so important and inherent to my identity. I don't think I would have the confidence, let alone the understanding or desire, to advocate for Israel if it weren't for the seeds Brawerman planted in me from my childhood.

### What is a key takeaway you took from your time at Brawerman?

Such a fundamental part of my Brawerman experience was being pushed to ask questions. I really don't take that for granted, especially during this time where so many people are blindly following the trend of the minute. Understanding the importance of asking questions, especially when you already have a predetermined set of beliefs, is such a critical skill not only in the context of Judaism, but more broadly. I don't think I would be as empowered a Zionist if it weren't for Brawerman encouraging me to constantly question everything.

### What is your favorite memory from your days at Brawerman?

I probably wouldn't have said this back then, but in hindsight, by far my favorite memory is Friday afternoon *Shabbat* services, especially in sixth grade. We just felt so cool and as though we were in our stomping ground. Friday afternoons brought so much joy and warmth. Now as a Jewish young adult in the world today, it feels increasingly like I have to make a cognizant effort to feel this way. I miss the ease of those Friday afternoons.

The Brawerman community is truly the single most special, loving, and empowering community that I have ever had the blessing of being a part of. My friends who I graduated with are my sisters and brothers to this day, the ones constantly checking in on me, supporting me, and uplifting me. I feel very blessed for this community and family that Brawerman cultivated.



## 2024 Milken Jewish Educator Award

One of our exceptional kindergarten teachers, Rebecca (Bec) Moray, was honored with the prestigious 2024 Milken Jewish Educator Award. This recognition highlights Bec's remarkable dedication to enriching her students' educational experiences through innovative and holistic teaching methods.

Bec Moray's classroom is a vibrant environment where Jewish values, social-emotional learning, and multidisciplinary lessons intersect. Her passion for science is evident in her creative approach to education. From interactive *Rosh HaShanah* lessons on bees to hands-on engineering explorations like building an L.A. River "waterslide" that stands on its own and carries water from start to finish without leaks, Bec ensures that her students not only learn but also embody the principles of renewal and sustainability.

As a member of the instructional leadership team and a key contributor to STEAM nights, Bec's influence extends beyond her classroom, inspiring both her peers and her students. Her unique ability to make learning engaging and meaningful has earned her this well-deserved recognition.

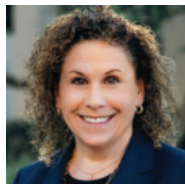
# Brawerman West Leadership



Brandon Cohen  
Head of School



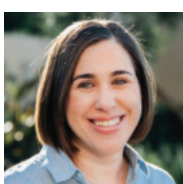
Nadine Zysman  
Assistant Head  
of School &  
Principal



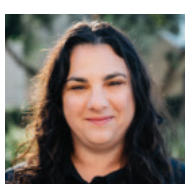
Rabbi Elissa  
Ben-Naim  
Director of Jewish &  
Life & Learning



Jenn Palmer  
Assistant  
Principal



Andrea Weinstein  
Assistant  
Principal



Michelle Handzo  
Director of  
Student Support



Lindy Goldberg  
Director of  
Admissions



Erin Jacobs  
Director of  
Operations



Gilad Weisner  
Director of Special  
Programming

## MESSAGE FROM Rabbi Joel Nickerson

*Senior Rabbi*

In our ancient texts, we find a powerful response when individuals are called to action: “*Hineini*—Here I am.” This simple declaration has profound implications, especially in today’s complex world. When Moses stood before the burning bush, when Abraham was tested, when Samuel heard his name called, they each answered “*Hineini*,” signifying not just physical presence but complete readiness to engage, to serve, to lead.

At Brawerman West, the spirit of *Hineini* isn’t merely this year’s theme—it’s the essence of our educational philosophy. Our students learn to show up with their full selves, to face challenges with courage rather than retreat with uncertainty. They develop the confidence to declare “Here I am” when confronted with opportunities to repair our fractured world.

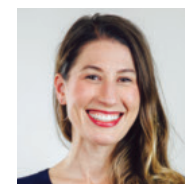
Having watched my own children flourish within Brawerman West’s nurturing environment, I have witnessed firsthand how this education shapes young minds and hearts. As my youngest daughter graduates this year, she carries with her not just knowledge but a profound sense of Jewish identity and commitment to *tikkun olam* that will guide her throughout life’s journey.

To our dedicated teachers and administrators who embody *Hineini* daily in their unwavering commitment to our children: *todah rabah*, thank you. And to our community whose generous support sustains this extraordinary school: your presence and partnership demonstrate the true meaning of *Hineini*.

## Wilshire Boulevard Temple Clergy



Rabbi Joel  
Nickerson  
Senior Rabbi



Cantor Lisa  
Peicott  
Senior Cantor



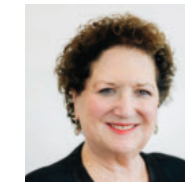
Rabbi Steven Z. Leder  
Rabbi Emeritus



Rabbi Elissa  
Ben-Naim



Rabbi David Eshel



Rabbi Susan Nanus



Cantor Kerith  
Spencer-Shapiro



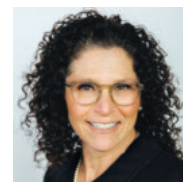
Rabbi Joel  
Simonds



Rabbi Hannah  
Elkin



Rabbi Leah Fein



Rabbi Leah Lewis

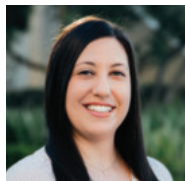


Cantorial Intern  
Aliya Stuart

## Wilshire Boulevard Temple Schools Leadership



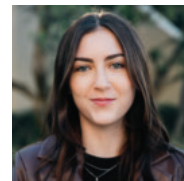
Naomi Reem  
Executive Director  
of Education



Rebecca Spain  
Director of  
Advancement



Jayme Zahavi  
Associate Director  
of Advancement



Lexi Freund  
Executive Assistant



# BRAWERMAN WEST GRANDparents

We are thrilled to thank our Brawerman West GRANDparents\* for their generous support of our 2024-2025 Annual Giving Campaign. Grandparents enrich our school community, fostering purposeful connections across generations. By connecting *I'dor v'dor*, from generation to generation, we create a deeper, more personal understanding of the world around us. We look forward to the expansion of this cherished giving program, enhancing the school experience, and adding additional layers of love and joy to our Brawerman West extended family members.



\* Brawerman GRANDparents donated a minimum of \$1,800 to this year's Annual Giving Campaign.

Halina and Alan Alter (Sam '27 and Grant '30 Kleinman)  
 Martha and Barry Berkett (Madison '28 and Asher '30 Dragoon)  
 Susan and Michael Castle (Madeleine '26 and James '30 Ross)  
 Gaby and Gregory Chazanas (Valentina '27 and Camilla '31 Chazanas)  
 Shelly and Mike Cohen (Jake '17 and Luke '21 Cohen)  
 Betty Cota (Levi '27, Eli '28, and Ezra '28 Teitelbaum)  
 Janet and Bill Glucksman (Sam '22, Henry '24, and Grace '26 Glucksman)  
 Michal and Zvi Gutentag (Benjamin '26 and Jake '29 Hynick)  
 Robin and William Haber (Oliver Sands '30)  
 Rhonda and John Jacobs (Noa '27 and Mati '30 Bornstein)  
 Debbie and Jimmy Lustig (Grayson '28 and Maverick '31 Gardner)  
 Fran and Joel Parker (Bernie '23, Taryn '25, and Jac '29 Zysman)  
 Linda and Bill Rouse (Hudson '25 and Aiden '29 Messinger)  
 Corrine and Lenny Sands (Isabel '27, Noa '29, and Oliver '30 Sands)  
 Theodore Schwartz (Samuel '26 and Cameron '29 Schwartz)  
 Ellen Weiler Stiefler (Madeleine Stiefler '31)  
 Sissy Taran (Bernie '23, Taryn '25, and Jac '29 Zysman)  
 Gerry Teitelbaum (Levi '27, Eli '28, and Ezra '28 Teitelbaum)  
 Holly and Ron Topplitzky (Elle Grodnik '30)  
 Penny and John Wallerstein (Jaxon Silverstein '28)  
 Betty and Ross Winn (Brodie '28 and Lia '31 Dorfman)



“

As grandparents who were born in Israel, Jewish education and values are very important to us. Our two grandsons enjoy their education and the warmth of the school staff, as well as the way *Shabbat* and holidays are being celebrated at Brawerman.”

- Michal and Zvi Gutentag  
 Grandparents of Benjamin ('26)  
 and Jake ('29) Hynick

”



# Fundraising & Engagement



Rebecca Spain, *Director of Advancement*  
Jayme Zahavi, *Associate Director of Advancement*

What a year it's been! We are thrilled to share that we surpassed our Annual Giving Campaign goal by over \$200,000, raising the highest amount in the history of our Campaign. This remarkable achievement reflects the strength, generosity, and dedication of our Brawerman West community.

When the devastating fires in Los Angeles impacted many of our Wilshire Boulevard Temple families, our community responded with unwavering support and unity. Moments like these remind us why investing in our school is so vital—it ensures we have the resources to support one another and sustain our community through difficult times.

A huge thank you to our Annual Giving Co-Chairs and the Endowment Committee for their hard work and leadership. And, of course, we're so grateful to everyone in our community who contributed—current parents, alumni families, grandparents, faculty, and former students. Your commitment truly makes a difference.



Wow! I think I speak for myself and the rest of the faculty when I say what a wonderful difference receiving hot lunch has provided to the faculty's life. Not only is it an enormous time saver in our personal lives, but faculty members are able to sit together, enjoying delicious food and company.

- Lee Spiro, *Grade 3 Teacher*



## 57 Families

joined the Brawerman West Giving Circle by donating gifts of

## \$12,000+

to the Annual Giving Campaign

HOSTED AN  
**Alumni Sushi and Shmooze**

for the Class of 2019 graduates



## MORE THAN \$250,000

in **NEW** endowment gifts and pledges

HELPED SUBSIDIZE

## Daily Hot Lunch

for all faculty and staff



RAISED MORE THAN

## \$1.8 Million

for our Annual Giving Campaign

the highest amount raised in Brawerman West's history

## MORE THAN \$107,000

from grandparents and alumni families



HOSTED  
**A Brunch and Learn for grandparents**

with Head of School Brandon Cohen and Rabbi Elissa Ben-Naim to celebrate our school's achievements, reflect on the critical role of Brawerman West during this time of rising antisemitism, and discuss where we are headed for the future.



# Endowment

Brawerman West currently has more than \$10 million in cash and legacy pledges.

A robust endowment is an essential component for independent schools in a landscape of rising tuition costs and scholarship requests. It also allows us to support families and areas of need for Brawerman West during times of crisis. This fund is a source of long-term support for the school. The principal is invested and the yearly interest may be used to:

- **Provide financial assistance**
- **Stabilize tuition**
- **Retain and recruit faculty**
- **Fund programs**

Both Annual Giving and Endowment are critical to Brawerman's success:

- **Annual Giving raises funds from all school families every year for current use**
- **Endowment provides for the future**

Endowment gifts of \$25,000 and above leave a lasting legacy. They are honored with a place on our permanent legacy walls at both campuses, and are recognized in the Brawerman West and Wilshire Boulevard Temple publications. Donor opportunities designated to endow special programs at the school are available.



ENDOWMENT  
COMMITTEE

Margo Freedman, Rochelle Glucksman, Stefanie Lipson,  
Joli Altshule, Kara Slater, Jessica Rosenberg, Brad Slater  
Not Pictured: Gretchen Klein and Marsha Levin

## CHAMPION

**\$1,000,000+**

Geri and Richard Brawerman (z"l)  
Dana and Richard Pachulski  
Talia and Jason Rimokh  
The Shirken Family

## LEADER

**\$500,000 - \$999,999**

Goldhirsh-Yellin Foundation,  
*in Memory of Bernard and  
Wendy Goldhirsh*

## BUILDER

**\$100,000 - \$249,999**

Joli, Andrew, Liv, and Winston Altshule  
Nadine Breuer Retirement Event  
de Toledo Family Scholarship Fund  
Rochelle and Jacob Glucksman  
Gretchen and Jon Klein  
The Lipson Family

The Silber Family Foundation  
The Sklaver Family

## BENEFACTOR

**\$50,000 - \$99,999**

The Joseph Alexander Foundation  
Brodyn, Skylar, and Georgia Bana  
Goldstein and Fridman Families  
The Heald Family  
Alison and Ben Levine  
Charlotte and Rick Offsay  
Anthony Pritzker Family Foundation  
The Samuel Family  
Payam, Pegah, Kyle, Leah, and  
Jaden Shahian  
The Ullendorff Family

## SUPPORTER

**\$25,000 - \$49,999**

Abrams Family Foundation  
The Alpern Family  
Allison and Larry Berg

Abigail, Reuben, Lev, and Eden Berman  
The Berman Family  
Brawerman Alumni Association Fund  
Brawerman Parent Association  
Nadine and Steve Breuer  
Robin and Elliott Broidy  
Lynette and Derek (z"l) Brown  
Demetra and Ari Chazanas  
Shelly and Mike Cohen and  
Fran and Joel Parker, *in Memory of  
Sylvia and Mayer Gutman*  
The Essey Family  
Sherri and John Fogelman  
Julie Monkarsh Gadinsky  
Suzanne and Jacob Gehl  
Bill and Janet Glucksman  
Margo E. Freedman and  
David B. Goldman  
Robin and William Haber  
Lonnie Levi Israel  
Opal and David Judaken  
Marsha and Fredrick Levin  
Marcia and Doug Mankoff  
Fred and Sharon Monempour

Lauryn Harris and Greg Pimstone  
Orit and Nadav Ravid  
Michelle and Marc Rosenbach  
Caleb Rosenblum '16 and  
Micah Rosenblum '21  
The Rosman Family, *in Memory of  
Lily and Don Rosman*  
The Sabet Family  
Lauren and Anton Schiff  
Kara and Brad Slater  
Caroline and Robby Soofer  
Amy and Jeffrey P. Straus  
The Waters Family  
Betty and Ross Winn

MORE THAN

**\$10 Million**  
in cash and legacy pledges

This is a school we **love**. Let's ensure its **future**.

2024-2025

# Annual Giving Campaign

Brawerman West's Annual Giving Campaign raised more than \$1,800,000, exceeding our goal of \$1,600,000. \$1,100,000 went toward Brawerman West's operating budget, while the remaining balance was used for supplemental expenditures.

The funds raised during the Annual Giving Campaign are vital to supplement the annual operating budget and enable Brawerman West to continue growing. Our robust community giving invests in our facilities, education specialists, professional development for teachers and administrators, and enhanced programming for our students.

RAISED  
**\$1,817,981**

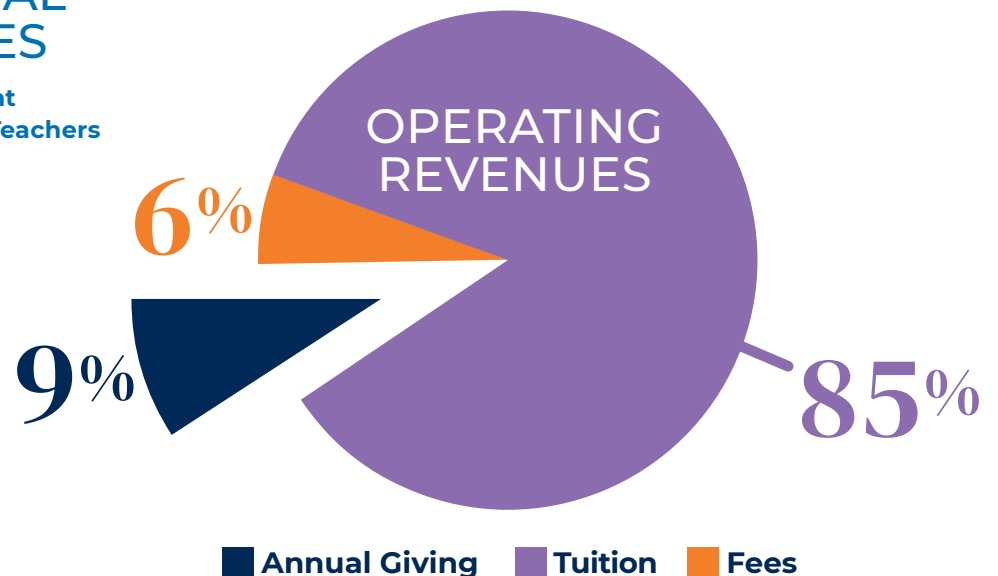
39%

## SUPPLEMENTAL EXPENDITURES

- Professional Development
- Specialists & Additional Teachers
- Enhanced Programming
- Student Technology (new laptops/iPads)
- Facility Updates

61%

## OPERATING BUDGET





# Annual Giving Campaign

## 2024-2025

Brawerman West reached 97% participation from families and exceeded our financial goal!

We raised \$1,817,981 to help pay operation costs, update the school's facilities, provide professional development opportunities for our staff, and so much more.



Annual Giving Co-Chairs:

Todd & Gina Schwartz, Bryce & Jason Ozur, Ghazal & Houman Bana

## BRAWERMAN WEST Giving Circle

### VISIONARY (\$50,000+)

Joli and Andrew Altshule  
Anonymous  
Gabi and Nick Molnar  
Jason and Talia Rimokh  
Gina and Todd Schwartz

### BUILDER (\$36,000-\$49,999)

Charlotte and Gary Gilbert  
Goldhirsh-Yellin Foundation

### BENEFACTOR (\$25,000-\$35,999)

Lissa and Adam Chesnoff  
Michelle and Morris Kokhab  
The Lavi Family  
Stephanie and Steven Teitelbaum

### PILLAR (\$18,000-\$24,999)

Samantha and Ryan Iwamoto  
Alison and Ben Levine  
Bryce and Jason Ozur  
Jessica and Ed Samek  
Lauren and Andrew Schwartz  
Melissa and Mark Shabason  
Marin and Ross Sklar

### LEADERSHIP (\$12,000-\$17,999)

Sharon and David Akhtarazad  
The Joseph Alexander Foundation  
Anonymous (3)  
Ghazal and Houman Bana  
Debbie Hiller and Ran Ben-Tzur  
Martha and Barry Berkett  
Abby and Reuben Berman  
Elishia and David Bolour  
Arika Jacobs and Daniel Bornstein  
Demetra and Ari Chazanas  
Amy and Brad Conroy  
Nahal and Kevin Danesh  
Talia and Tyler Friedman  
Jennifer and Michael Gardner  
Rochelle and Jacob Glucksman  
Lisa Amster Gorodistian and Sam Gorodistian  
Emily and Alex Hakim  
Dorit and Adir Haroni  
Dana and Jeff Hynick  
Shanon and Daniel Khakshouri  
Genna and Robert Liebesman  
Stefanie and Marc Lipson  
Diana and David Makkabi  
The Messinger Family  
Gregory and Michelle Nathan  
Julia and David Ramin  
Beth and Michael Sands  
Corrine and Lenny Sands  
Elana and Eli Schuldt  
Nicole and Steve Seigel  
Pegah and Payam Shahian  
Sarah and Adam Sher  
Jennifer and Jason Silverstein  
Kelly and Matt Sloan  
Deborah and David Tractenberg  
Gelena and Keith Wasserman  
Alyssa and Steve Weinberger  
Pamela Wohl

# Annual Giving Campaign

2024-2025

## PATRON (\$8,000-\$11,999)

Mi and Daniel Berman  
Megan and Craig Bloom  
Jayme and Adam Bolden  
Niousha and Mark Broumand  
Lauren and Josh Diamond  
Brie and Seth Dorfman  
Monica and Keith Dragoon  
Behnoosh and Michael Farzam  
Marianna and Yoel Flohr  
Alisa and Brandon Geer  
Torre and Steven Hakim  
Jennifer Kim and David Hertog  
Tamara Kagel and Brook Hinchman  
Ellie and Simon Javaheri  
Alli and Jeff Kleinman  
Jennifer and Manny Labranche  
Heather and Scott Menkus  
Stephanie and Chris Mintle  
Charlotte and Rick Offsay  
Alexis and Seth Ross  
Cami and Scott Sargent  
Schuyler and Michael Schwimer

Dori and Larry Simon  
Gimena and Ben Soleimani  
Jessica Kronstadt and William Turner

## SUPPORTER (\$4,000-\$7,999)

Sharleen and Danniell Akhtarzad  
Anonymous  
Claudia and Roberto Apelfeld  
Lia and Gabe Barenfeld  
Susan and Michael Castle  
Penny and Jeff Cherun  
Dina and Noel Cohen  
Bailey and John-Michael Del Valle  
Kimberly and Adam Duritza  
Rene and Danny Farah  
Stefanie and Jason Finger  
Anne and Chase Fisher  
Linda and Sean Foley  
Alex and Larry Freiman  
Lisa and Alex Fridman  
Suzanne and Jacob Gehl  
The Glotzer Family  
Jenny and Greg Goldberg  
Danielle Jagoda and Ari Goldman  
Vicki Chou and Vadim Gorin  
Mari and Alex Grodnik  
Shirley and Gabriel Halimi  
Melissa and Brian Haloossim  
Deborah and Brent Ilouliau  
Jordana and Mark Jaffe  
Shelly Janger  
Dina and Michael Javaheri  
Michelle and Max Kaizer  
David Kaminow

Sharona and Foo Katan  
Melanie and Jason Kravitz  
Violet Wallach and Kevin Lake  
Brittney and Sean Lakin  
Imbar and Stuart Lebowitz  
Diana and Richard Leher  
Melissa and Matthew Lewitz  
Gwen and Greg Lorber  
Sarah Adams and Paul Lukac  
Debbie and Jimmy Lustig  
Erica and Josh Mamann  
The Mann Family  
Sydney and Joey Meller  
Jenna and Darren Menaker  
Rena and Alexander Merino  
Emily and Nathan Miller  
Sharon and Fred Monempour

Sara and Burton Morris  
Jennifer and Zev Norotsky  
Samantha and Michael Nussbaum  
Sharon and Simon Ourian  
Rachel and David Paletz  
Jenna and Neil Parris  
Amanda and Nic Paul  
Nina and Rambod Peykar  
Raquel and David Pressberg  
Carrie and Evan Rifkin  
Margarita and Danny Rojany  
Elyse and Andrew Rosenfield  
Renee and Bobby Saadian  
Denille and Jordan Sachs  
Emily and Daniel Sands  
Andrea and Jeff Schleider







Danielle Schwartz  
Mauricio Schwartzman  
The Shpelfogel Family  
Jenny and Rony Shram  
Neri and Omer Singer  
Caroline and Robby Soofer  
Neta and Shahram Soroudi  
Nick Sternberg  
The Taylor Family  
Erica and Adi Weinberg  
The Winston Family  
Nona and David Yadegar  
Rachel and Jake Zacuto  
Nadine and Zach Zysman

## DONOR (up to \$3,999)

Lida Abramov  
Melanie, Nicole, and David Alkov  
Halina and Alan Alter  
Susie and Bruce Amster  
Anonymous (10)  
Ada Arita  
Miri Avraham

The Bakshandeh Family  
Rabbi Elissa and Gal Ben-Naim  
Carly Blau  
Fiona Breslin  
Stephanie Brodsky  
Gaby and Gregory Chazanas  
Hillary Chesler  
Adrienne Coffield  
Karen and Brandon Cohen  
Shelly and Mike Cohen  
Betty Cota  
Darline Cuevas and  
Randy Curtis  
The Dorner Family  
Helen and Gary Dosik  
Courtney Edson  
Jamie and Adam Epstein  
Rozita Farahdel  
Barbara and Roger Fieldman  
Rachel Fischler  
Alexandra Fishman  
Lexi Freund, *Class of 2017*  
Naomi Reem and Ronen Gilat  
Haley Ginsberg, *Class of 2009*  
Janet and Bill Glucksman  
Lindy and David Goldberg  
Sarah Gorley



# Annual Giving Campaign

2024-2025



Stuart and Amy Graiwer  
Bruce Michael Green  
Michelle Groveman  
Michal and Zvi Gutentag  
Elisa Haber  
Robin and William Haber  
Michelle and Jon Handzo  
Romy Harari, *Class of 2020*  
Neda and Cyrus Harouni  
Yonit Harounian  
Penny Hill  
Oriana Horowitz  
Anna Hugo  
Erin Jacobs  
Rhonda and John Jacobs  
Opal and David Judaken  
Lara Kamen  
Ben Kamer  
Joshua Karbelnig  
Zoe Kasiske  
Margaret Soper and Jason Kessler  
Natalie and Peyman Kohanzadeh  
Logan Kosko  
Rachel Kupferberg  
Lisa and C.J. Laffer  
Peter Levenson  
Erin and Jamie Levy  
Lindsay and Ori Levy  
Wendy Liu  
Adena Loewenthal



Yvette Lopez  
Jennifer Maman  
Marcia and Doug Mankoff  
Samantha McGurk  
Jessica Meisels  
Jonny Blitstein and Zara Mizrahi  
Rebecca Moray  
The Nehoray Family  
Valeria Nevarez  
Julia and Rabbi Joel Nickerson  
Charlene Niku  
Jenn Palmer  
Fran and Joel Parker  
Ashley Paul  
The Pimstone Family  
David and Dana Pogoda  
Carlos Ramirez  
Orly Renetzky

Rabbi Mark Borovitz and  
Harriet Rossetto  
Golnaz and Kayvon Rouhani  
Linda and Bill Rouse  
Craig Rutenberg  
Stephanie Rutenberg  
Barry Schapira  
Theodore Schwartz  
Galite and David Shafer  
Ashley and Rabbi Beau Shapiro  
Jodi Shorr  
Kara and Seth Silverman  
Mel Silvernail  
Steven and Randi Singer  
Hillary Baum and Matthew Smith  
Rebecca Spain  
Lee Spiro  
Ryan Stearn



Ellen Weiler Stiefler  
Jessica and Zack Stiefler  
Gila Tabibian  
Sissy Taran  
Gerry Teitelbaum  
Nurse Bic Thatawat  
Jacques Tizabi  
Holly and Ron Toplitzky  
Danielle and Alejandro Umansky  
Penny and John Wallerstein  
Amanda and Greg Wapnick  
Hollis Logan and Robert Weinberg  
Andrea Weinstein  
Lauren and Matt Weisbarth  
Gilad Weisner  
Jill Weiss  
Betty and Ross Winn  
Jayme Zahavi  
Joseph Zipkin  
Brian Zipser  
Orit Ziv

## SPECIAL THANKS

Rodeph Sholom School, New York  
*Grade 8, Graduating Class of 2025*  
for reprinting yearbooks for  
Brawerman families impacted  
by the fires

## COMMUNITY SPONSORS

BJE: Builders of Jewish  
Education  
The Jewish Federation  
of Greater Los Angeles  
Ralph's Community  
Contribution Program

Every effort is made to ensure accuracy.  
If you find an error please contact  
Jayme Zahavi at [jzahavi@wbtl.org](mailto:jzahavi@wbtl.org).

For information on how to support  
Brawerman West, contact Rebecca Spain at  
(424) 208-8944 or [rspain@wbtl.org](mailto:rspain@wbtl.org).



**Thank you**  
**TO THE ENTIRE BRAWERMAN WEST  
COMMUNITY FOR YOUR GENEROSITY.**

# BRAWERMAN WEST ELEMENTARY SCHOOL of WILSHIRE BOULEVARD TEMPLE

Non-Profit Org.  
US Postage  
Paid  
Los Angeles CA  
Permit# 2112

## WEST CAMPUS

11661 W. Olympic Boulevard  
Los Angeles, CA 90064  
(424) 208-8934

## BRAWERMAN WEST ADMINISTRATION

Brandon Cohen, *Head of School*  
Nadine Zysman, *Assistant Head of School and Principal*  
Rabbi Elissa Ben-Naim, *Director of Jewish Life and Learning*  
Jenn Palmer, *Assistant Principal*  
Andrea Weinstein, *Assistant Principal*  
Michelle Handzo, *Director of Student Support*  
Lindy Goldberg, *Director of Admissions*  
Erin Jacobs, *Director of Operations*  
Gilad Weisner, *Director of Special Programming*  
Rebecca Spain, *Director of Advancement*  
Jayme Zahavi, *Associate Director of Advancement*

## WILSHIRE BOULEVARD TEMPLE LEADERSHIP

Donna S. Nadel, *Executive Director*  
Naomi Reem, *Executive Director of Education*  
Douglas Lynn, *Associate Executive Director*  
Toby Neiman, *Associate Executive Director*  
Karim Merzian, *Chief Financial Officer*  
Andrew Levey, *Chief Human Resources Officer*  
Erinn Alcabas, *Director of Institutional Advancement*

## BRAWERMAN MISSION STATEMENT

We provide an unparalleled educational experience rooted in Jewish values - inspiring innovative thinking, empowering responsible leadership, and honoring individuality within a nurturing community.

## WILSHIRE BOULEVARD TEMPLE CLERGY

Rabbi Joel Nickerson, <i>Senior Rabbi</i>	Cantor Kerith Spencer-Shapiro
Cantor Lisa Peicott, <i>Senior Cantor</i>	Rabbi Joel Simonds
Rabbi Steven Z. Leder, <i>Rabbi Emeritus</i>	Rabbi Hannah Elkin
Rabbi Elissa Ben-Naim	Rabbi Leah Fein
Rabbi David Eshel	Rabbi Leah Lewis
Rabbi Susan Nanus	Cantorial Intern Aliya Stuart
	Rabbinic Intern Jeff Silverstein

## BOARD OF TRUSTEES

Deborah Dragon, <i>President</i>	CJ Laffer
Jeff Cohen, <i>Vice President</i>	Jessica Lewensztain
Claire Goldsmith, <i>Vice President</i>	Fern Topas Salka
Kevin Neustadt, <i>Treasurer</i>	Steve Seigel
Betty Winn, <i>Secretary</i>	Adam Sher
Scott Edelman, <i>Immediate Past President</i>	David Wimmer
Joli Altshule	Robin Zucker
Carolyn Enenstein	Fredrick Levin, <i>Counsel</i>
Jennifer Haarmann	
Abbi Hertz	<i>Honorary Board Members</i>
Charles Hirschhorn	Howard M. Bernstein, Audrey Irmas,
Jean Kaplan	Julie Miller, Richard Pachulski

## 2024-2025 EDUCATION & SCHOOL GOVERNANCE COMMITTEE FOR WILSHIRE BOULEVARD TEMPLE SCHOOLS

Claire Goldsmith, <i>Chair</i>	Jessica Lewensztain
Lauryn Harris-Pimstone, <i>Vice Chair</i>	Sara Morris
Deborah Dragon	Kevin Neustadt
Rebecca Jonah	Lynn Wagmeister
Avi Klein	Betty Winn

## WILSHIRE SCHOOLS EAST

ERIKA J GLAZER  
EARLY CHILDHOOD CENTER  
of WILSHIRE BOULEVARD TEMPLE

BRAWERMAN  
ELEMENTARY SCHOOL EAST  
of WILSHIRE BOULEVARD TEMPLE

3663 Wilshire Blvd, Los Angeles, CA 90010  
Phone: (213) 835-2125

EARLY  
CHILDHOOD  
CENTERS  
of WILSHIRE BOULEVARD TEMPLE

## GLAZER FAMILY EARLY CHILDHOOD CENTER

3663 Wilshire Blvd, Los Angeles, CA 90010  
Phone: (213) 835-2125

## MANN FAMILY EARLY CHILDHOOD CENTER

11661 W. Olympic Blvd, Los Angeles, CA 90064  
Phone: (424) 208-8900

## RESNICK FAMILY EARLY CHILDHOOD CENTER

11960 Sunset Blvd, Los Angeles, CA 90049  
Phone: (310) 472-1255



in partnership with  
JFEDLA

