



ANN ARBOR PUBLIC SCHOOLS  
LEAD. CARE. INSPIRE.



# ANN ARBOR PUBLIC SCHOOLS

## FALL CAPITAL PROGRAM UPDATE

### SEPTEMBER 17, 2025

---

**Bernerd Rice**, Assistant Superintendent  
*Capital Programs and Physical Properties*

**Jason Bing**, Director  
*Capital Programs*

**Stephanie Corona**, Project Executive  
*Gilbane Building Company*

**Kevin Stansbury**, Project Design Manager  
*Gilbane Building Company*

The logo for Ann Arbor Public Schools is centered in the upper half of the slide. It consists of a thin orange rectangular frame. Inside the frame, the text "ANN ARBOR PUBLIC SCHOOLS" is written in a white, sans-serif, all-caps font. Below this, the tagline "LEAD. CARE. INSPIRE." is written in a smaller, white, sans-serif, all-caps font. At the bottom of the frame, there are three small, square icons: a blue square with a white star, a red square with a white heart, and an orange square with a white exclamation mark.

ANN ARBOR PUBLIC SCHOOLS  
LEAD. CARE. INSPIRE.

# 2025 Fall Update Projects Overview

A large, abstract graphic on the right side of the slide. It features a thick orange diagonal bar that starts from the top right and extends towards the center. Below this, there is a red rectangular block and a blue rectangular block, both tilted at an angle, creating a sense of depth and movement.

The logo for Ann Arbor Public Schools is centered in the upper half of the image. It features the school's name and motto within a yellow rectangular frame. Below the text are three colored squares containing icons: a blue square with a white star, a red square with a white heart, and a yellow square with a white exclamation mark.

ANN ARBOR PUBLIC SCHOOLS  
LEAD. CARE. INSPIRE.

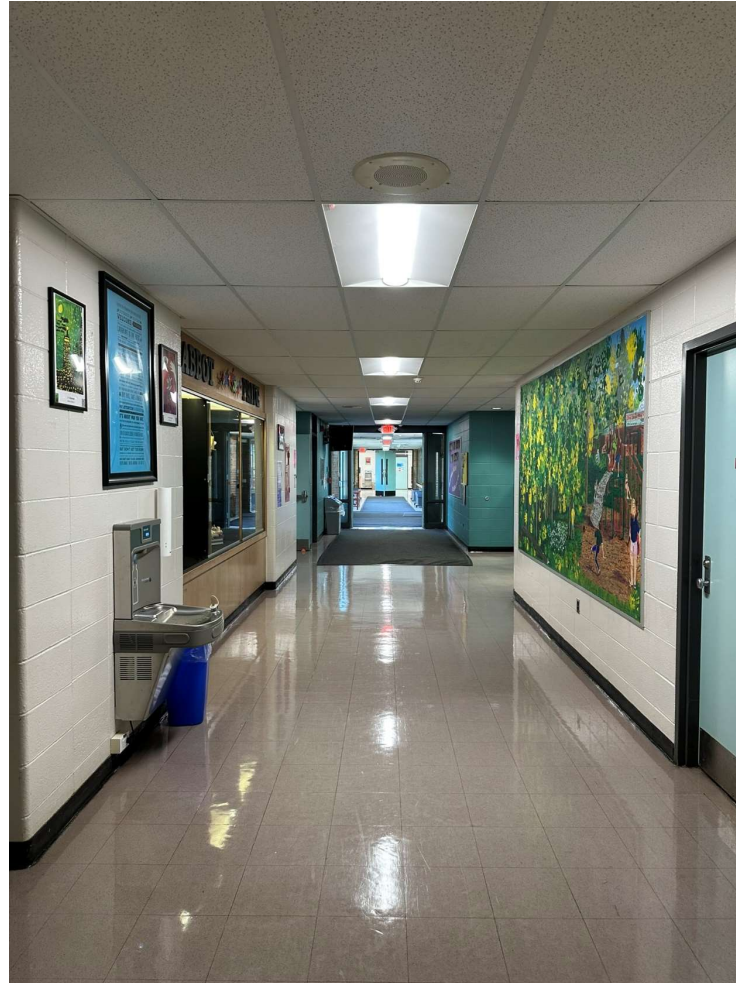
# ABBOT ELEMENTARY

Architect: Stantec

Construction Manager: McCarthy & Smith, Inc.



## Abbot Elementary – Air Conditioning & Lighting





ANN ARBOR PUBLIC SCHOOLS  
LEAD. CARE. INSPIRE.



**ANN ARBOR OPEN**

# Ann Arbor Open – Paving Improvements



ANN ARBOR PUBLIC SCHOOLS  
LEAD. CARE. INSPIRE.



# ANN ARBOR STEAM



# Ann Arbor Steam - Roofing





ANN ARBOR PUBLIC SCHOOLS  
LEAD. CARE. INSPIRE.



# CLAGUE MIDDLE SCHOOL





# Clague Middle School – Window, Door, & Restroom Improvements





# Clague Middle School – Solar Array





# Clague Middle School & New Logan Elementary Campus - Site Improvements





ANN ARBOR PUBLIC SCHOOLS  
LEAD. CARE. INSPIRE.

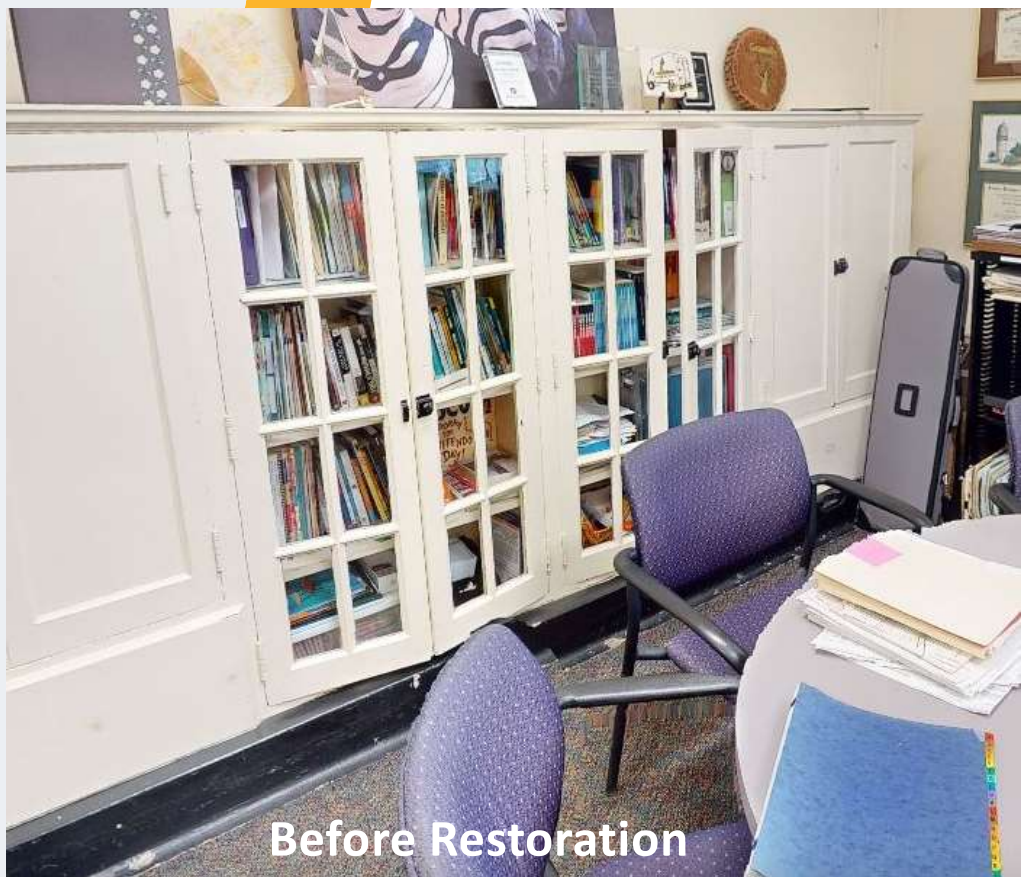


# COMMUNITY HIGH SCHOOL





## Community High School –Painting & Restoration

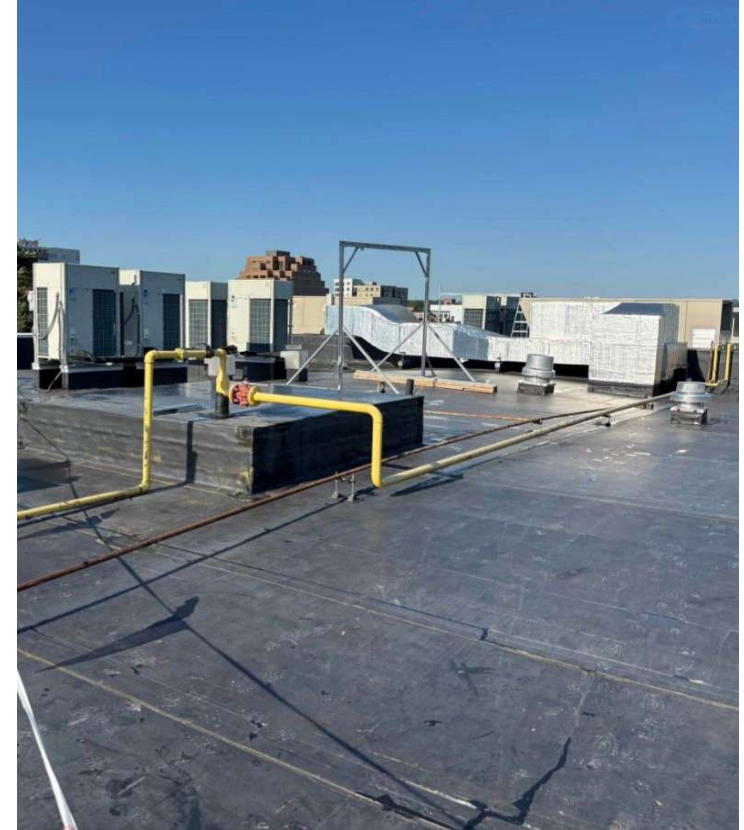




# Community High School – Flooring



# Community High School – Paving Improvements





The logo for Ann Arbor Public Schools is centered in the upper half of the image. It consists of a thin orange rectangular frame. Inside the frame, the text "ANN ARBOR PUBLIC SCHOOLS" is written in a white, sans-serif, all-caps font. Below this, the tagline "LEAD. CARE. INSPIRE." is written in a smaller, white, sans-serif, all-caps font. At the bottom of the frame, there are three colored squares: a blue square with a white stylized star or atom symbol, a red square with a white heart symbol, and an orange square with a white exclamation mark symbol.

ANN ARBOR PUBLIC SCHOOLS  
LEAD. CARE. INSPIRE.

# NEW DICKEN ELEMENTARY

Architect: DLR Group with Wightman  
Construction Manager: Brix Associates

# New Dicken Elementary



Geothermal Drilling



Site Clearing and Building Pad



ANN ARBOR PUBLIC SCHOOLS  
LEAD. CARE. INSPIRE.



**FORSYTHE MIDDLE SCHOOL**





# Forsythe Middle School – Stair, Sidewalk, & Roofing Improvements





ANN ARBOR PUBLIC SCHOOLS  
LEAD. CARE. INSPIRE.



**HAISLEY ELEMENTARY SCHOOL**

A decorative graphic on the right side of the slide consists of several overlapping geometric shapes. A large yellow shape, resembling a stylized 'L' or a corner, is the most prominent. Below it, a red shape and a blue shape overlap. The background of the slide is a solid dark blue.

# Haisley Elementary – Air Conditioning & Lighting





# Haisley Elementary – Air Conditioning & Lighting





ANN ARBOR PUBLIC SCHOOLS  
LEAD. CARE. INSPIRE.



# HURON HIGH SCHOOL

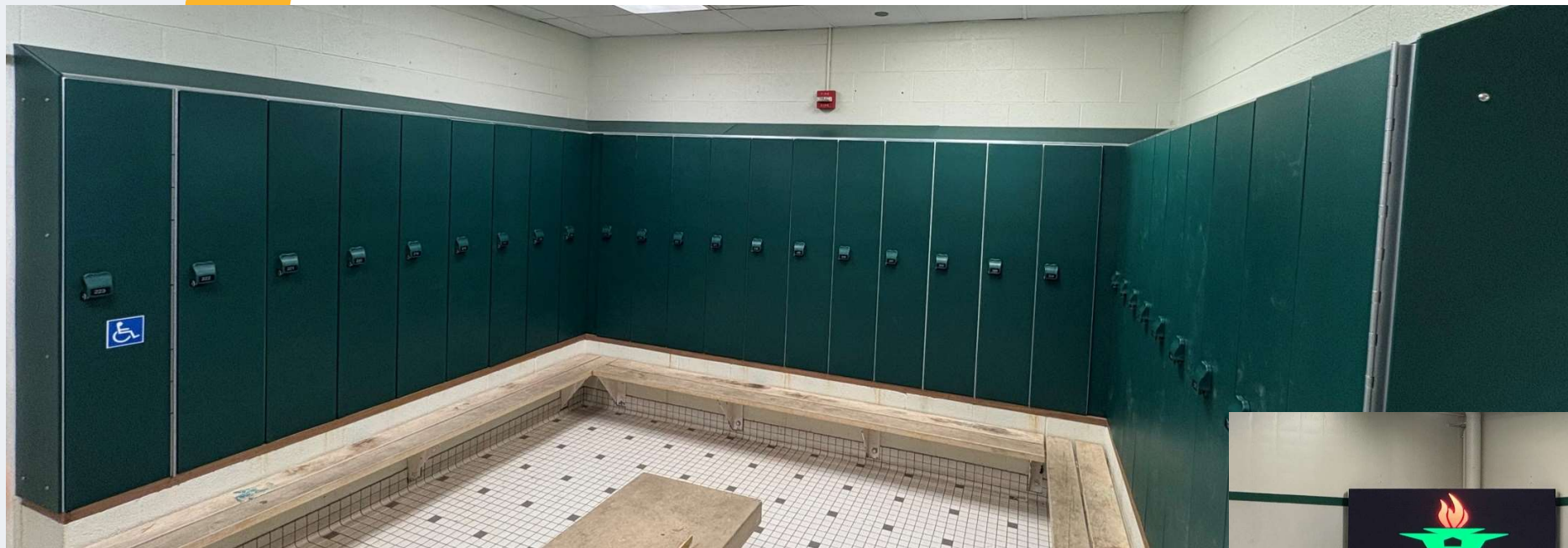
Abstract geometric shapes are located on the right side of the slide. They include a large yellow shape, a red shape, and a blue shape, all arranged in a way that suggests a stylized 'H' or a series of overlapping planes.



# Huron High School – Auxiliary Athletic Field Turf Replacement



# Huron High School – Pool Lockers & Timing Board Replacement





The logo for Ann Arbor Public Schools is centered in the upper half of the image. It features a thin orange rectangular frame. Inside the frame, the text "ANN ARBOR PUBLIC SCHOOLS" is written in a white, sans-serif, all-caps font. Below this, the tagline "LEAD. CARE. INSPIRE." is written in a smaller, white, sans-serif, all-caps font. At the bottom of the frame, there are three small, square icons: a blue square with a white stylized star or atom symbol, a red square with a white heart symbol, and an orange square with a white exclamation mark symbol.

ANN ARBOR PUBLIC SCHOOLS  
LEAD. CARE. INSPIRE.

# NETWORK OPERATIONS CENTER

Architect: The Collaborative

Construction Manager: The Christman Company

# NETWORK OPERATIONS CENTER (NOC)







ANN ARBOR PUBLIC SCHOOLS  
LEAD. CARE. INSPIRE.

# PIONEER HIGH SCHOOL

# Pioneer High School – Auxiliary Athletic Field Turf Replacement



# Pioneer High School – Pool Lockers & Timing Board Replacement







ANN ARBOR PUBLIC SCHOOLS  
LEAD. CARE. INSPIRE.



# PITTSFIELD ELEMENTARY SCHOOL

Decorative geometric shapes on the right side of the slide, including a large orange triangle, a red triangle, and a blue triangle.

# Pittsfield Elementary – Paving Improvements





ANN ARBOR PUBLIC SCHOOLS  
LEAD. CARE. INSPIRE.



# SCARLETT MIDDLE SCHOOL

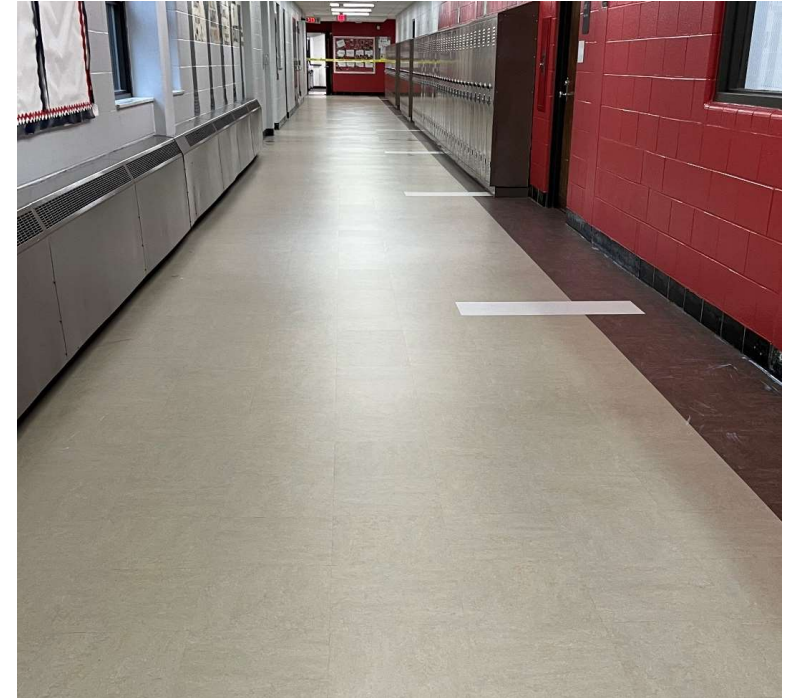




# Scarlett Middle School – Flooring Improvements



Cafeteria Flooring



# Scarlett Middle School – Flooring & Restroom Improvements



Band Room Flooring



ANN ARBOR PUBLIC SCHOOLS  
LEAD. CARE. INSPIRE.



# SKYLINE HIGH SCHOOL



# Skyline High School – Auxiliary Athletic Field Turf Replacement





# Skyline High School – New HVAC Chiller & Pool Timing Board





The logo for Ann Arbor Public Schools is centered in the upper half of the slide. It features a thin orange rectangular frame. Inside the frame, the text "ANN ARBOR PUBLIC SCHOOLS" is written in a white, sans-serif, all-caps font. Below this, the tagline "LEAD. CARE. INSPIRE." is written in a smaller, white, sans-serif, all-caps font. At the bottom of the frame, there are three small, colored squares: a blue square with a white stylized star, a red square with a white heart, and an orange square with a white exclamation mark.

ANN ARBOR PUBLIC SCHOOLS  
LEAD. CARE. INSPIRE.

# TRANSPORTATION SOUTH LOT

## Transportation South Lot – Bus EV Charging & Solar



ANN ARBOR PUBLIC SCHOOLS  
LEAD. CARE. INSPIRE.



# MAJOR PROJECTS



The logo for Ann Arbor Public Schools is centered in the upper half of the image. It consists of a thin orange rectangular frame. Inside the frame, the text "ANN ARBOR PUBLIC SCHOOLS" is written in a white, sans-serif, all-caps font. Below this, the tagline "LEAD. CARE. INSPIRE." is written in a smaller, white, sans-serif, all-caps font. At the bottom of the frame, there are three colored squares: a blue square with a white stylized star or atom symbol, a red square with a white heart symbol, and an orange square with a white exclamation mark.

ANN ARBOR PUBLIC SCHOOLS  
LEAD. CARE. INSPIRE.

# NEW DICKEN ELEMENTARY

Architect: DLR Group with Wightman  
Construction Manager: Brix Associates

# New Dicken Elementary



Geothermal Drilling



Site Clearing and Building Pad

The logo for Ann Arbor Public Schools is centered in the upper half of the image. It features a thin orange rectangular frame. Inside the frame, the text "ANN ARBOR PUBLIC SCHOOLS" is written in a white, sans-serif, all-caps font. Below this, the tagline "LEAD. CARE. INSPIRE." is written in a smaller, white, sans-serif, all-caps font. At the bottom of the frame, there are three colored squares: a blue square with a white stylized star or atom symbol, a red square with a white heart symbol, and an orange square with a white exclamation mark.

ANN ARBOR PUBLIC SCHOOLS  
LEAD. CARE. INSPIRE.

# NEW LOGAN ELEMENTARY

Architect: Stantec with Fielding International

Construction Manager: The Christman Company



# NEW LOGAN ELEMENTARY



The logo for Ann Arbor Public Schools is centered in the upper half of the image. It features a thin orange rectangular frame. Inside the frame, the text "ANN ARBOR PUBLIC SCHOOLS" is written in white, uppercase, sans-serif font. Below it, the tagline "LEAD. CARE. INSPIRE." is written in a smaller, white, uppercase, sans-serif font. At the bottom of the frame, there are three colored squares: a blue square with a white star-like symbol, a red square with a white heart symbol, and an orange square with a white exclamation mark symbol.

ANN ARBOR PUBLIC SCHOOLS  
LEAD. CARE. INSPIRE.

# NEW MITCHELL ELEMENTARY

Architect: Neumann Smith Architecture with Fielding  
International

Construction Manager: McCarthy & Smith, Inc.



# New Mitchell Elementary





The logo for Ann Arbor Public Schools is centered in the upper half of the image. It consists of a thin orange rectangular frame. Inside the frame, the text "ANN ARBOR PUBLIC SCHOOLS" is written in a white, sans-serif, all-caps font. Below this, the tagline "LEAD. CARE. INSPIRE." is written in a smaller, white, sans-serif, all-caps font. At the bottom of the frame, there are three colored squares: a blue square with a white stylized star or atom symbol, a red square with a white heart symbol, and an orange square with a white exclamation mark symbol.

ANN ARBOR PUBLIC SCHOOLS  
LEAD. CARE. INSPIRE.

# SLAUSON MIDDLE SCHOOL

Architect: Quinn Evans with Fielding International  
Construction Manager: McCarthy & Smith, Inc.

## Slauson Middle School – Pool Demolition





The logo for Ann Arbor Public Schools is centered in the upper half of the image. It features a yellow rectangular frame. Inside the frame, the text "ANN ARBOR PUBLIC SCHOOLS" is written in white, uppercase letters. Below this, the tagline "LEAD. CARE. INSPIRE." is written in a smaller, white, uppercase font. At the bottom of the frame, there are three colored squares: a blue square with a white star, a red square with a white heart, and a yellow square with a white exclamation mark.

ANN ARBOR PUBLIC SCHOOLS  
LEAD. CARE. INSPIRE.

# NEW THURSTON ELEMENTARY

Architect: Stantec with Fielding International  
Construction Manager: The Christman Company



# New Thurston Elementary





The logo for Ann Arbor Public Schools is centered in the upper half of the slide. It features the school's name and motto within a thin orange rectangular frame. Below the text are three colored squares: blue with a white star, red with a white heart, and orange with a white exclamation mark.

ANN ARBOR PUBLIC SCHOOLS  
LEAD. CARE. INSPIRE.

# UPCOMING PROJECTS

On the right side of the slide, there are several large, overlapping geometric shapes. A thick orange diagonal bar runs from the top right towards the center. Below it, a red trapezoidal shape and a blue trapezoidal shape are positioned, creating a dynamic, abstract composition against the dark blue background.



# UPCOMING PROJECTS

**Previously approved by board of education:**

**Freeman – Solar Array** *Fall 2025*

**Transportation – Solar Array** *Fall 2025*

**Exterior Envelope Improvements (Eberwhite & Ann Arbor Open)–** *Start Summer 2026*

**Projects forthcoming to the board of education:**

**Tappan – Flooring Repair** *Summer 2026*

**Skyline HS - Elevator Improvements** *Summer 2026*

**Pioneer HS – Elevator Improvement** *Summer 2026*

**Exterior Envelope Improvements (Bach, Community, Angell) –** *Summer 2026*



# Thank You!

For more information, please visit:

[A2schoolsbond.org](https://A2schoolsbond.org)

