



St Catherine's  
BRAMLEY



THE ST CATHERINE'S  
ASSOCIATION  
CAREERS 2025  
FORUM

Tuesday 30<sup>th</sup> September 2025  
4.30pm - 6.30pm





# CAREERS 2025 FORUM

The Careers and Association Teams are excited to invite you to our upcoming Careers Forum—an engaging event designed to help you discover the wide range of career paths available beyond school and university.

We're thrilled to welcome a fantastic line-up of speakers, including alumnae and parents who are generously sharing their time and expertise. Their journeys span diverse industries and academic backgrounds, offering you a unique chance to gain real-world perspective and inspiration.

I hope you will take this opportunity to broaden your horizons and attend sessions that spark your interest—whether it's the degree subjects the speakers studied, the careers they've pursued, or both. This is an opportunity to connect, learn, and gain insight into the world beyond.

Be curious and make the most of this evening—you never know where it might take you!



*Emma Watson*

Emma Watson  
Head

I am very excited that we are hosting this year's Forum. The Forum provides you with the opportunity to hear from a wide range of professionals about their career paths and current careers. This information will open your eyes to many different possibilities and pathways, some which you may never have heard of.

As a St Catherine's community, we are very lucky to have such a supportive network of people who are willing to come in and talk to you and I would like to take this opportunity to thank all of our speakers for giving up their valuable time to support this event. I hope this evening will help to inspire you as you make decisions about your future.



*Catherine Taylor*

Catherine Taylor  
Director of Careers Education

# CAREERS FORUM 2025

## ■ PROGRAMME

- |        |   |
|--------|---|
| 4.30pm | <b>Welcome &amp; Introduction</b><br>Emma Watson, Head of St Catherine's School   |
| 4.45pm | <b>Panel Session 1</b>  |
| 5.25pm | <b>Networking</b> in the Sports Hall  |
| 5.45pm | <b>Panel Session 2</b>  |
| 6.30pm | <b>Networking</b> in Lower Atrium (including drinks for guests)<br>Official event end time; networking opportunity continues. |
| 7.00pm | Event ends for all  |

# ■ SEMINARS

What to do with a degree in ....

- Business/Maths/Economics
- Languages
- Geography and Environmental Science
- Humanities
- Creative Arts
- Science – leading to Medical Careers
- Science leading to a range of Different Careers



## ■ DEGREES IN BUSINESS/ MATHS/ ECONOMICS



**LEIGH BAKER (Parent)**

Advisor | Gimi

*Maths & Economics | University of Southampton*



**MEGAN O'HANLON (Alumna 2014)**

Financial Planning & Analysis Manager | Pernod Ricard

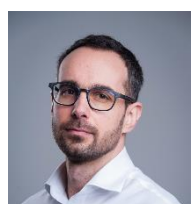
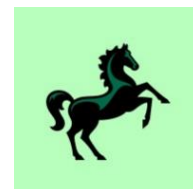
*Economics | Exeter University*



**SARAH ROBSON (Alumna 2012)**

Senior Manager, Investor Relations | Lloyds Banking Group

*Maths with Economics & Business | Durham University*



**JAMES TAYLOR (Parent)**

Chief Financial Officer | Joseph Joseph

*Commerce | University of Birmingham*







## DEGREES IN LANGUAGES



**JEN DUTTON (Parent)**

Consultant | Korn Ferry

*French & Russian | University of Bristol*



**MINTY HAMER (Alumna 2011)**

Senior Associate (Film TV & Theatre) | Harbottle & Lewis

*French & Spanish Literature | University of Edinburgh*



**PHOEBE JOWETT (Alumna 2018)**

Sale Coordinator & Cataloguer | Christies

*Spanish & Arabic | University of Oxford*



**ANNABEL STRONG (Alumna 2017)**

Category Manager | Danone

*French & International Management | University of Bath*





## DEGREES IN ENVIRONMENTAL SCIENCES



**BELLA BUFFINI (Alumna 2015)**

Principal Planner | hgh Consulting  
*Geography | University of Edinburgh*  
*Spatial Planning | UCL*



**NICK FEAST (Parent)**

Energy Executive | Belemnite Advisory Ltd  
*Geoscience | University of Cambridge*  
*PHD in Geoscience | UEA*



**PHILIPPA SAMPSON-BANCROFT (Alumna 2000)**

Senior Manager, Public Land | Greater London Authority  
*Geography | University of Durham*  
*Spatial Planning | UCL*





## ■ DEGREES IN HUMANITIES



**EMILY CORNELL (Alumna 2018)**

Online Key Account Manager | Penguin Random House  
*Political Science & International Relations | University of Birmingham*



**MEGAN CRANE (Alumna 2016)**

International Project Manager | Mars - TrüFrü  
*History | University of Cambridge*



**ELEANOR HURLEY (Alumna 2016)**

Detective | Surrey Police  
*Anthropology | University of Manchester*  
*Global Health & War Studies | Kings College London*



**EMILY REVESS (Alumna 2010)**

Deputy Director | Dept for Energy, Security and Net Zero (OfGen)  
*Politics & European Studies | UCL*  
*Politics & Communications MSc | LSE*







## DEGREES IN CREATIVE ARTS

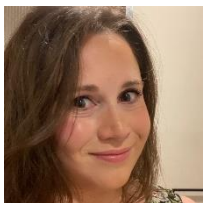


### **GEORGIA FIGGIS (Alumna 2013)**

Community and Creative Engagement Manager |  
Punchdrunk Entertainment

*English | University of Oxford*

*Classical & Contemporary Acting | Royal Conservatoire of  
Scotland*



### **CARA LASKARIS (Alumna 2008)**

Commissioning Editor | Country Living  
Violinist

*Music | University of Oxford*

COUNTRY LIVING



### **PHOEBE MENGES (Alumna 2020)**

Hair & Make Up Artist | Theatre & Film

*Hair & Make Up Artistry | Iver Academy*



### **PETRA STAFFORD-SMITH (Alumna 2013)**

Production Manager | Warner Brothers Discovery

*Digital Film Production | Royal Holloway University*





## ■ DEGREES IN SCIENCES

Leading to a range of different careers



### **ANDREW BATE (Parent)**

VP, Head of Safety Innovation & Analytics | GSK  
*Chemistry | University of Oxford*  
*Clinical Pharmacology PhD | UMEA, Sweden*



### **EMMA BROCKSOM (Alumna 2010)**

Head of Technical | Fever Tree  
*Food & Human Nutrition | University of Newcastle*



### **VICKY EDMONDS (Parent)**

CEO | EVA, England  
*Biology | University of Oxford*  
*Zoology PhD | University of Cambridge*



### **ELLIE HINDE (Alumna 2012)**

ESG Consultant | Ramboll  
*Biological Sciences | University of Oxford*



### **LOU NORMAND (Alumna 2010)**

Project Manager | George Institute for Global Health  
*Biochemistry | University of Bristol*





## ■ DEGREES IN SCIENCES

Leading to Medical Careers



**HELEN KLEIN (Alumna 2012)**

Clinical Director/Vet | Kingswood Veterinary Practice  
*Veterinary Practice | University of Bristol*



**ALICE PINK (Alumna 2017)**

Paramedic | London Ambulance Service  
*Biomedical Sciences | University of Exeter*  
*Paramedic Science MSc | University of West London*



**SIMON THOMPSON (Parent)**

Consultant Orthopaedic Knee Surgeon | Chelsea &  
Westminster NHS Trust  
*Medicine | Imperial College, London*



**AMY WATRET (Parent)**

Consultant in Palliative Medicine | Royal Surrey County  
Hospital  
*Medicine | Imperial College, London*





Please choose 2 seminar choices on the form accessed through the QR code below



**Catherine Taylor**  
Head of Careers  
[catherine.taylor@stcatherines.info](mailto:catherine.taylor@stcatherines.info)  
01483 893363



**St Catherine's, Bramley**  
GSA Day & Boarding School since 1885 | 4 - 18 years  
Guildford GU5 0DF | [www.stcatherines.info](http://www.stcatherines.info)