

TRAINING FOR VOLUNTEERS

Warning:

This presentation concerns and discusses child abuse and may be triggering or difficult for some people.

COURSE PREVIEW & OUTLINE

1. The Role of a Mandated Reporter
2. Volunteer Responsibilities
3. Neglect
4. Physical Abuse
5. Sexual Abuse and Exploitation
6. Emotional Abuse
7. How to Report and What Follows

1. ROLE OF A MANDATED REPORTER

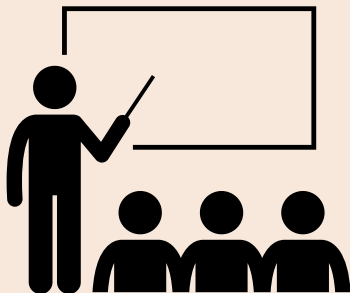
A mandated reporter is a person who is required by law to report concerns of child neglect or abuse. A mandated reporter can be in contact with children as:

- Part of their employment
- Practice of their profession

Anyone can make a report to Child Welfare Services (CWS), but there are those who are statutorily listed, and are mandated to do so.

In California, there is a list of professions who are identified as mandated reporters.

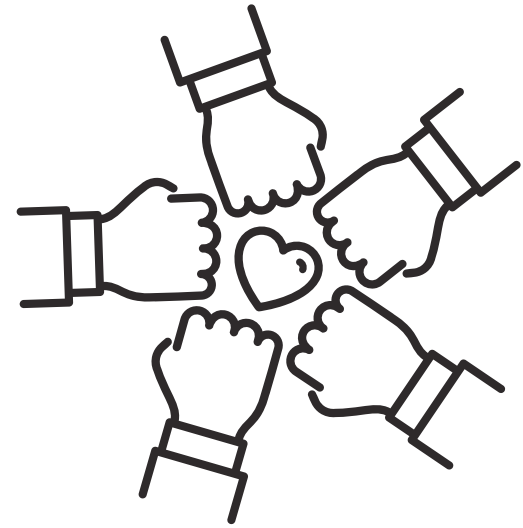
PROFESSIONS IDENTIFIED AS MANDATED REPORTERS



- Medical Professionals
- Law Enforcement
- Clergy
- Child Care Providers
- School Personnel
- Mental Health Professionals and Social Workers
- Human Resources
- Supervisors
- Designated Volunteers
- Other Reporters

2.

VOLUNTEER RESPONSIBILITIES



VOLUNTEERS

California Penal Code section 11165.7 states, volunteers of public or private organizations whose duties require direct contact with and supervision of children are not mandated reporters but are encouraged to obtain training in the identification and reporting of child abuse and neglect and are further encouraged to report known or suspected instances of child abuse or neglect to an agency specified in Section 11165.9.

If you are unsure, consult with your school's professional team members to assist in decision making. This may include teachers, social workers and/or school administrators.

REPORTING RESPONSIBILITIES OF A VOLUNTEER



- While volunteers are not mandated by law to report, if child abuse or neglect is suspected, they should file a report with the proper authorities.
- School volunteers will likely be in positions of trust, and students may confide in them.
- School volunteers may observe signs of suspected child abuse and/or neglect and should be equipped with the tools and knowledge to report appropriately.
- As a school volunteer, you are highly encouraged to report any suspected child abuse or neglect to the proper authorities.

VICTIM & PERPETRATOR

A **victim** is any minor under the age of 18 that has experienced serious physical injury, mental injury, sexual abuse, or exploitation.

A **perpetrator** is a person who has caused abuse or has knowingly allowed the abuse of a child.

These people can be:

- A parent who harms their child.
- A caregiver, relative, babysitter, or foster parent can also be a perpetrator.
- A stranger or acquaintance who has caused harm to a child.
- A school employee

REASONABLE SUSPICION

Reasonable suspicion comes from evaluating facts and circumstances that lead to believe a child is at risk of harm or is being harmed.

- Facts can include, admission by a perpetrator, child's disclosure of information, information from a third party or the reporter's own observations or impressions.
- Proof is not required to make a report.
- When in doubt or unsure, stay on the safe side and report.

A volunteer should report when there is suspicion that a child has experienced:

- Neglect
- Physical abuse
- Sexual abuse and exploitation
- Emotional abuse

3.

NEGLECT

Child neglect is when a caretaker fails to provide a child's basic needs.

Abuse is the result of harmful actions while neglect comes from not taking action.

Poverty does not mean there is neglect. Poverty is when a caregiver does not have the resources while neglect is when a caregiver has the resources and chooses not to provide the needs.

SIGNS OF NEGLECT

- Clothes are ill-fitting, filthy, or inappropriate for the weather.
- Hygiene is consistently bad (unbathed, matted and unwashed hair, noticeable body odor).
- Untreated illnesses and physical injuries.
- Is frequently unsupervised or left alone or allowed to play in unsafe situations and environments.
- Is frequently late or missing from school.
- Coming to school early and staying late to avoid going home.
- Stealing or hoarding food.
- Constant hunger.



4.

PHYSICAL ABUSE

Physical abuse is a non-accidental act by a caregiver that causes or creates a substantial risk of physical injury.

The injuries can range in severity from minor bruising to death and have long-lasting effects.

Physical discipline from a caregiver that does not injure or impair a child is not considered abuse.

SIGNS OF PHYSICAL ABUSE



- Frequent injuries or unexplained bruises, welts, or cuts.
- Is always watchful and “on alert” as if waiting for something bad to happen.
- Injuries appear to have a pattern such as marks from a hand or belt.
- Shies away from touch, flinches at sudden movements, or seems afraid to go home.
- Wears inappropriate clothing to cover up injuries, such as long-sleeved shirts on hot days.
- Burns, cuts, scrapes, lacerations, broken bones.

RED FLAG BEHAVIORS IN CHILDREN

- Fearful of parents or caregivers
- Hesitant to speak about home life
- Reports being injured by parents or caregiver
- Moves uncomfortably or complains of soreness
- Afraid to go home
- Self-harms, bangs head, etc.
- Tries to hide injuries or bruises



5.

SEXUAL ABUSE AND EXPLOITATION

Sexual abuse is a form of child abuse that includes sexual activity.

- Most children delay disclosing they experience or have experienced sexual abuse.
- Reports can happen months or even years after abuse.

Sexual exploitation occurs when someone uses their power to coerce, manipulate, or deceive a child under the age of 18 into sexual activity in exchange for something the child needs or wants.

SEXUAL ABUSE

In California a person must be 18 years of age in order to **legally** consent to have sex with another person.

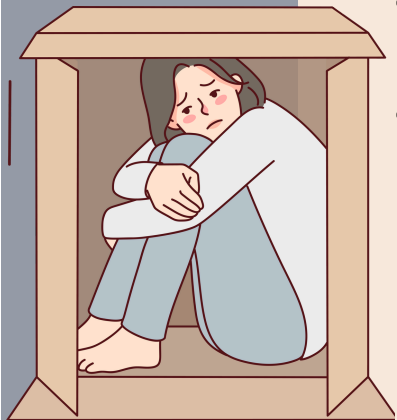
Minors cannot legally consent to any type of sexual activity.

Sexual **assault** is any type of sexual contact or behavior without consent (minors cannot give consent). Assault can include:

- Rape, attempted rape
- Incest
- Sodomy
- Fondling or unwanted sexual touching
- Forcing a victim to perform sexual acts, such as oral sex.

Sexual **harassment** can be considered sexual abuse. It can include:

- Unwanted sexual advances
- Gestures, leering, or displaying sexually suggestive objects or pictures
- Graphic comments, sexually degrading words, or suggestive messages or invitations
- Physical touching or assault done by the use of force, violence, or fear of immediate and unlawful bodily injury to the victim.



SIGNS OF SEXUAL ABUSE

- Trouble walking or sitting
- Pain or itching in genital area
- Frequent urinary or yeast infections
- Displays knowledge or interest in sexual acts inappropriate to his or her age, or even seductive behavior.
- Makes strong efforts to avoid a specific person, without an obvious reason
- Bedwetting or nightmares
- Lack of confidence, depression, anxiety
- Doesn't want to change clothes in front of others or participate in physical activities
- A sexually transmitted disease (STD) or pregnancy, especially under the age of fourteen
- Runs away from home



SEXUAL EXPLOITATION

A commercially sexually exploited child (CSEC) is one under the age of 18 who agrees to engage in sexual conduct, in exchange for food, money, clothes, shelter, goods or care.

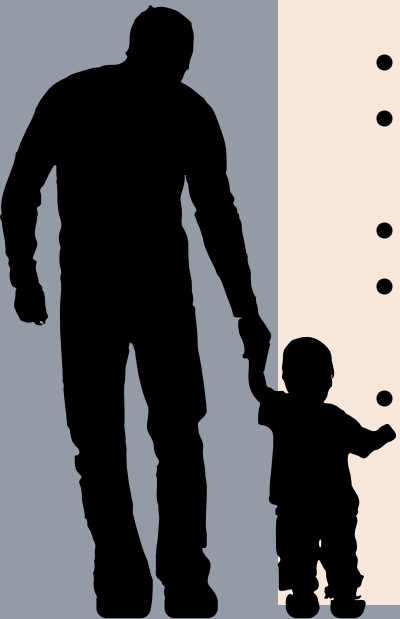
Mandated reporters are required to report any knowledge or reasonable suspicion a child is a victim of CSEC.

Children at **higher risk** of being victims of CSEC:

- Prior history of child abuse/neglect
- Homeless
- Lack of caring or supportive adult
- Parental substance abuse
- Lesbian, gay, bisexual, or transgender
- History of being system involved (juvenile justice, foster care, criminal justice)

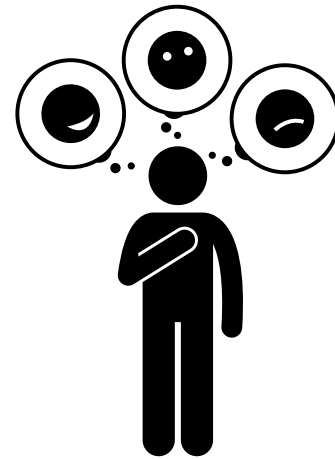
Exploitation can occur by:

- Minor being targeted, groomed, and controlled
- Violence, coercion, and intimidation
- Victims can be isolated from peers and family, and often go missing
- Technology can be used to exploit them without them realizing it (being talked into sharing sexual images etc.)



6.

EMOTIONAL ABUSE



WHAT IS EMOTIONAL ABUSE?

Emotional abuse in children is defined as behaviors, speech, and actions of parents, caregivers or other significant figures in a child's life that have a negative mental impact on the child.





- Excessively withdrawn, fearful, or anxious about doing something wrong.



- Shows extremes in behavior (extremely compliant or extremely demanding; extremely passive or extremely aggressive).



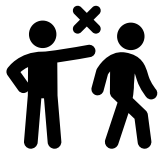
- Doesn't seem to be attached to the parent or caregiver.



- Acts either inappropriately adult-like (taking care of other children) or inappropriately infantile (rocking, thumb-sucking, throwing tantrums).

WARNING SIGNS OF EMOTIONAL ABUSE IN CHILDREN

TYPES OF EMOTIONAL ABUSE

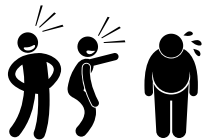


- **Rejecting and Ignoring**

Showing little interest in the child

- **Shaming or Humiliating**

Using language or taking action that takes aim at child's feelings or self-worth



- **Terrorizing**

Punishing with or threatening abandonment, harm or death

- **Corrupting**

Telling lies to justify actions or ideas

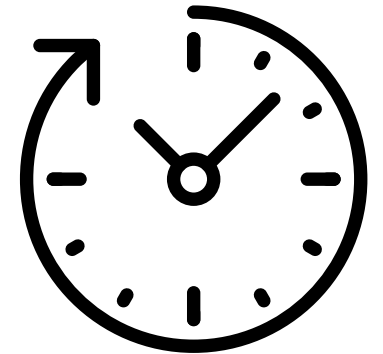


- **Isolating**

Keeping a child from peers and positive activities

7.

HOW TO REPORT & WHAT FOLLOWS



MAKING A REPORT

A report of child abuse is not an accusation, but a request to determine whether abuse or neglect exists and begin the helping process. Making a report of child abuse or neglect may be difficult. When a child discloses their abuse to you, it means they trust you. It's important to react in a responsible way that's reassuring to the child.

Volunteers should report known or suspected incidence of child abuse to a child welfare agency immediately (or as soon as possible). If the situation is urgent, or there is an immediate safety threat, call the police.

**Sacramento
County**



<https://www.cdss.ca.gov/reporting/report-abuse/child-protective-services>

RIGHTS TO CONFIDENTIALITY AND IMMUNITY



When making a report, a volunteer will likely be asked for their name.

- The reporter's identity is kept confidential.
- Reports of suspected child abuse are also confidential.
- Volunteers are not criminally liable for failing to report.
- Mandated reporters have immunity from state criminal or civil liability under the Penal Code. Any other person making a report shall not be civilly or criminally liable unless they make a false report or made a report with a reckless disregard for the truth (see Penal Code section 11172).

AFTER THE REPORT IS MADE

The local law enforcement agency is required to investigate all reports. Cases may also be investigated by Child Welfare Services when allegations involve abuse or neglect within families. Child is not moved from home immediately.

CHILD PROTECTIVE SERVICES

The Child Protective Services (CPS) is the major organization to intervene in child abuse and neglect cases in California. Existing law provides for services to abused and neglected children and their families. More information can be found at Child Protective Services.



DISCLAIMER

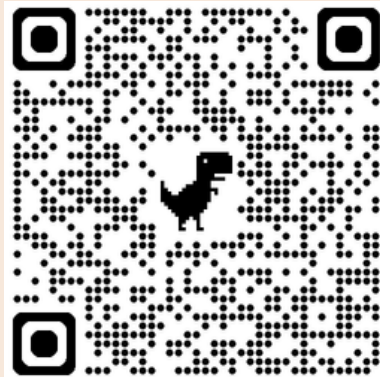
School volunteers are not mandated by law to report suspected child abuse. However, they are highly encouraged to do so, and when uncertain, stay on the safe side and report.

THANK YOU FOR COMPLETING THE TRAINING

Please use the link or QR code below to access the assessment:

<https://forms.gle/8YDZGy7uaChvsaaj8>

*80% is required to pass



References

- <https://www.cde.ca.gov/ls/ss/ap/>
- <https://www.cde.ca.gov/ls/ss/ap/childabusereporting.asp>
- <https://www.cde.ca.gov/ls/ss/ap/childabusereportingguide.asp>
- <https://dcfas.saccounty.net/CPS/Pages/Emergency-Response/GI-EmergencyHotline.aspx>
- https://leginfo.legislature.ca.gov/faces/codes_displayText.xhtml?chapter=2.&part=4.&lawCode=PEN&title=1.&article=2.5
- https://leginfo.legislature.ca.gov/faces/codes_displaySection.xhtml?lawCode=PEN&ionNum=11165.7