



2024/2025

WADSWORTH CITY SCHOOLS QUALITY PROFILE



A successful school district places a high degree of importance on ensuring that all children have the opportunity to reach their fullest potential inside and outside of the classroom. This profile helps characterize the overall educational value of your school district in areas that matter most in our community. While attempts have been made to recognize excellence in many areas, due to space restrictions, not all accomplishments can be mentioned.



ACADEMIC PROFILE

**CLASS OF 2025
EARNED OVER
\$1.75 MILLION
In Post-Secondary
Scholarship**

WADSWORTH HIGH SCHOOL

- ACT Average Score: Overall - 21.4
- Subsets Averages: English - 22.5, Math - 21.5, Reading - 21.8 and Science - 21.4
- World Languages offered: French, Latin, Spanish
- College Credit Plus (CCP) options: Students attend classes at WHS or primarily at The University of Akron (including Wayne College) and Stark State

Graduation 2025 Distinctions



- 354 Total Students
- 162 Graduated with Honors
- 50 Earned Cum Laude (3.4-3.69 GPA)
- 48 Earned Magna Cum Laude (3.79-3.99 GPA)
- 64 Earned Summa Cum Laude (4.0 and Above GPA)

THE CLASS OF 2025

- 52% of the class received college/post-secondary scholarships
- 500 hours of college credits were earned
- 1 National Merit Commended Scholar
- 78 Students received an Honors Diploma
- 26% of the class of 2025 are first-generation students attending college
- 85% of students taking the AP exams scored a 3 or higher
- 92.6% of Career Technical students (CTE) scored proficient or higher on technical assessments
- 32.4 % of CTE students earned transferable college credits
- 15.5 % of CTE students earned a 12-point industry credential
- 16.9% of CTE students earned the Ohio Means Jobs Readiness Seal
- 23% of CTE students completed 250 hours or more of work-based learning experiences

EXTENDED OPPORTUNITIES :

- College Dual credit opportunities at the high school include: 3D Modeling & Design, Calculus 2&3, Computer-Aided Drawing, English Composition 1 &2, Intermediate Spanish 1&2, Manufacturing Processes, Personal Finance, Psychology, Public Speaking, Government, and Ancient Empires
- 17 AP classes offered: Art, Biology, Calculus, Chemistry, Computer Science, Economics, English Language, English Literature, Environmental Science, European History, Government, Physics, Pre-Calculus, Research, Statistics, U.S. History, & A.P. Seminar





ACADEMIC PROFILE

PRESCHOOL - 8TH GRADE



There were 85 7th and 8th grade students who took courses for high school credit last year (including Algebra I, Geometry, and Physical Science) to receive high school credit.

Lincoln Elementary School (2012), Wadsworth Middle School (2019), and Isham Elementary School (2022) were designated by the U.S. Department of Education as a National Blue Ribbon School of Excellence.

Central Intermediate School was re-designated as an Ohio School to Watch.

Franklin Elementary School was designated a STEM School in 2019.

WMS was designated an Ohio School to Watch.

Central Intermediate School received the Momentum Award for Value Added from the Ohio Department of Education in 2016.

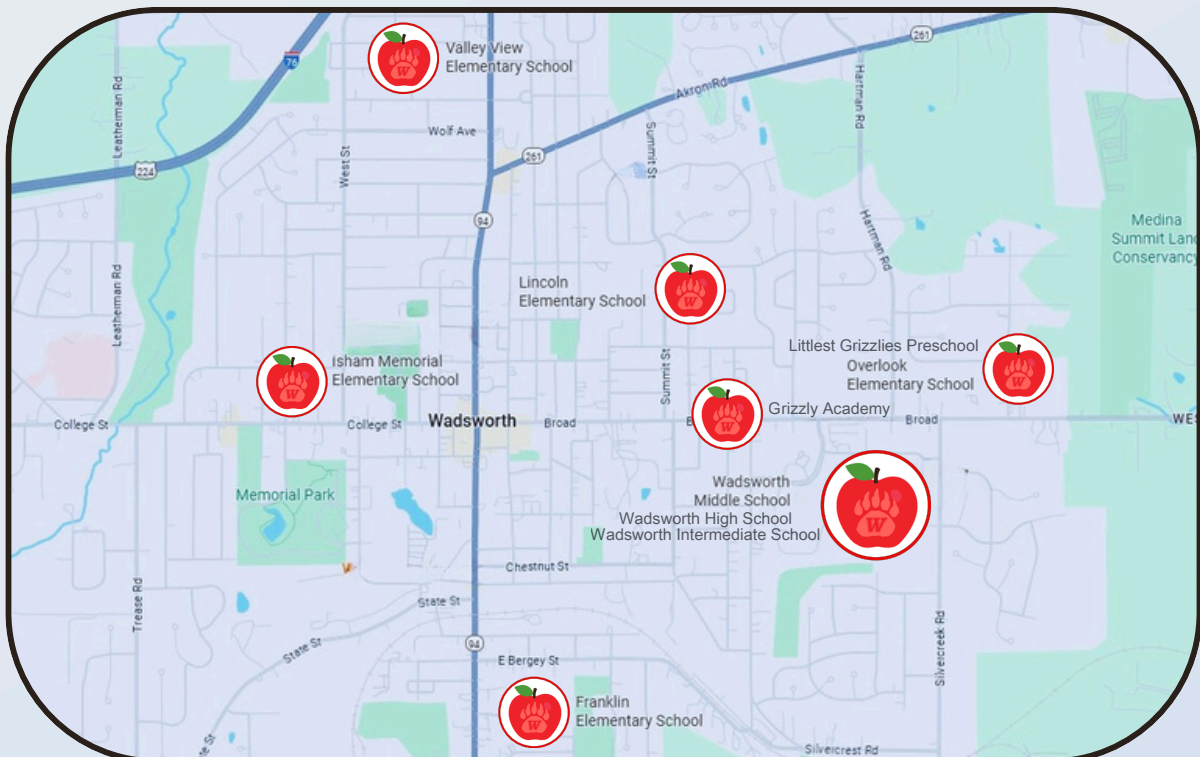
OAESA Hall of Fame Schools are Franklin Elementary in 1998, 2003, 2011 and 2015; Isham Elementary in 2013; and Lincoln Elementary in 2019.

CIS, Franklin, Isham, and WMS received an Overall A Award from OSBA.

Overlook Elementary School achieved the highest rating, Five-Star, in the Step Up to Quality preschool rating.

Grizzly Academy was named the 2024 Wadsworth-Area Chamber of Commerce Outstanding Nonprofit Organization of the Year.

Valley View Elementary School and Wadsworth High School received the state of Ohio Purple Star Designation.





COMMITMENT TO IMPROVEMENT

WADSWORTH CITY SCHOOL DISTRICT FIVE-YEAR PLAN 2021-2025

AREA: Curriculum/Instruction/Assessment

Vision: The Wadsworth City School District historically has offered a strong, well-rounded education to our students, as evidenced by our students' success on state testing, college and career readiness and the course offerings available to our students. We will continue to build upon our history by regularly evaluating our offerings and services available to students of all ability levels. It is our belief that our focus should be on sound instructional practices, an inclusive curriculum that exposes students to many curricular areas, and the availability of support services that meet the needs of our students and prepare them for life in the twenty-first century.

Funding Source: If additional expenses are necessary to achieve the stated goals in this area, the expenses will come from the general operating fund.

GOALS	ACTION STEPS	PERSON(S) RESPONSIBLE	TIMELINE
1. Enhance the high school course and support pathway for students who are non-college and non-career technical education bound	1. (A) Review current offerings and support and research offerings and support in other school districts	1. (A)-(B) High school administrative team, high school counselors, teachers and support staff, Director of Professional Development, Director of Instruction and Professional Development, Assistant Superintendent, Superintendent	1. (A) January-February 2021
	1. (B) Create pathway		1. (B) March 2021
	1. (C) Recommend pathway to the Board of Education	1. (C) Superintendent, Board of Education	1. (C) April 2021



71% OF OUR TEACHERS HAVE ADVANCED DEGREES.

MANY OF OUR TEACHERS SERVE AS MENTORS.

14 DISTRICT EMPLOYEES COMPLETED THEIR GIFTED ENDORSEMENT.

STRATEGIC PLAN 2021-2025

CREATION OF A K-12 STEM PATHWAY FOCUSING SPECIFICALLY ON COMPUTER SCIENCE AND ENGINEERING

BOARD-APPROVED CLASS SIZE REDUCTION PLAN FOR GRADES K-2 BEGAN IN THE FALL OF 2016

MIDDLE AND HIGH SCHOOL TEACHER COLLABORATION TIME ONCE A MONTH

OPPORTUNITY SCHOOL AT WADSWORTH HIGH SCHOOL

GRIZZLY ACADEMY OPENED IN THE 2023-2024 SCHOOL YEAR

ALL FACULTY AND ADMINISTRATION PARTICIPATE IN PROFESSIONAL DEVELOPMENT EACH YEAR. RECENT TOPICS INCLUDE TRAUMA- INFORMED CARE, GOOGLE APPS FOR EDUCATION, FORMATIVE ASSESSMENT, TECHNOLOGY, CURRICULUM DEVELOPMENT AND IMPLEMENTATION, AI IN EDUCATION STEM, PROBLEM-BASED LEARNING, ORTON-GILLINGHAM, SAFETY AND SECURITY.



COMMITMENT TO IMPROVEMENT

NEW COURSES ADDED OVER THE LAST TEN YEARS:

HIGH SCHOOL: AP PRE-CALCULUS, AP PHYSICS C: MECHANICS, AP SEMINAR, AP RESEARCH, AP ENVIRONMENTAL SCIENCE, ALGEBRA IIA, AP STATISTICS, AP ART, AP COMPUTER SCIENCE, AP PHYSICS, ADVANCED QUANTITATIVE REASONING, ADVANCED ART, APPLIED ALGEBRA, ART-3D DESIGN I, ART-3D DESIGN II, ART-2D DESIGN I, ART-2D DESIGN II, ART APPRECIATION, ANIMAL CARE AND SCIENCE (FOUR CITIES COMPACT), APPLIED CAREER SKILLS, BUSINESS COMPUTER APPLICATIONS, HONORS CALCULUS, CALCULUS II, CALCULUS III, CAREER ENGLISH, CHOIR (ENCORE, RISING SOUND, NEW EDITION, ROYAL SENSATIONS, RHYTHM IN RED), COLLOQUIAL FRENCH, CREATIVE WRITING, CULTURES OF THE SPANISH-SPEAKING WORLD, DATA SCIENCE, EXPLORATORY COMPUTER SCIENCE, FIRE/EMT (FOUR CITIES COMPACT PROGRAM), FRENCH FILM, HOME/CAR MAINTENANCE, INTRODUCTION TO ART, INTRODUCTION TO BROADCASTING, INTRODUCTION TO COLLEGE MATH, INTRODUCTION TO SPORTS OFFICIATING, LITERATURE AS FILM, MODERN NONFICTION, MODERN SPANISH, MULTI-LANGUAGE PATHWAY 1; MULTI-LANGUAGE PATHWAY 2, MUSICAL THEATER, MUSIC THEORY, ORGANIZATIONAL AND STUDY SKILLS ELECTIVE 1 & 2, POPULAR MUSIC AS LITERATURE, PRECALCULUS, READING AND WRITING WORKSHOP 1 & 2, SPORTS IN AMERICAN HISTORY SINCE 1865, SWIMMING, THE ART OF POETRY, ROYAL SENSATION (TOP CHOIR), BIG JAZZ (TOP JAZZ BAND), HOME/CAR MAINTENANCE, ZERO PERIOD FRENCH/SPANISH, SPORT'S HISTORY

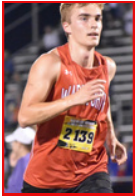
MIDDLE SCHOOL: HEALTH, COMPUTER SCIENCE, FAMILY CONSUMER SCIENCES HEALTHY FOODS, HONORS ENGLISH LANGUAGE ARTS, HONORS SCIENCE, INFORMATION TECHNOLOGY, PRE-ENGINEERING, AND TECHNOLOGY





STUDENT LEADERSHIP AND ACTIVITIES

EXTRACURRICULAR ACTIVITIES INCLUDE: ACADEMIC CHALLENGE, ANIME CLUB, ART CLUB, ATHLETICS (BASEBALL, BASKETBALL, BOWLING, CHEERLEADING, CROSS COUNTRY, FOOTBALL, GOLF, GYMNASTICS, LACROSSE, SOFTBALL, SOCCER, SWIMMING, TENNIS, TRACK AND FIELD, VOLLEYBALL, WHEELCHAIR BASKETBALL, AND WRESTLING), BAND, BIG BROTHERS/BIG SISTERS, BOOK CLUB, BOOKMARKERS CLUB, BRUIN, CALDECOTT CLUB, CHESS/CHECKERS CLUB, CHOIR, COURTYARD CLUB, DECA, DRAMA CLUB, ESPORTS, HUDDLE, INTERACT, INTERNATIONAL CLUB, INTRAMURALS, JAZZ CLUB, KEY CLUB, LEGO CLUB, MATH 24, MENTORING, MOCK TRIAL, OHIO MATH LEAGUE, PEER TUTORING, PEER LEADERS, PHILOSOPHY CLUB, PIZZA AND PAGES, POWER OF THE PEN, PROJECT LOVE, QUIZ BOWL, ROBOTICS CLUB, ROLE PLAYING GAMES CLUB, SAFETY PATROL, SPEECH AND DEBATE, PEP CLUB, SADD, SCIENCE CLUB, SPECTRUM, STAMP, STEM/STEAM CLUBS, STUDENT COUNCIL, SUBURBAN LEADERSHIP TEAM, TWENTY FOUR, YEARBOOK AND YMCA CATCH FITNESS PROGRAM.



OVER 70% OF OUR STUDENTS PARTICIPATE IN EXTRACURRICULAR ACTIVITIES.



THERE IS A STUDENT REPRESENTATIVE ON THE WADSWORTH BOARD OF EDUCATION.

EACH SENIOR MUST PERFORM 10 HOURS OF COMMUNITY SERVICE WITHIN A WADSWORTH COMMUNITY NON-PROFIT ORGANIZATION TO GRADUATE.



THERE IS SAFETY PATROL AT EACH ELEMENTARY SCHOOL.



STEM CAMP, CODING CAMP, AND NERD CAMP

FIELD TRIPS INCLUDE HIGH SCHOOL WORLD LANGUAGE CLASS TRIPS TO GREECE AND TURKEY.

GIRLS' CROSS COUNTRY, FOOTBALL, AND VOLLEYBALL WERE 2023-24 SUBURBAN LEAGUE NATIONAL CONFERENCE CHAMPIONS.

NUMEROUS STATE QUALIFIERS; NUMEROUS STATE PLACERS AND ATHLETES RECOGNIZED AS ALL-OHIO DURING THE 2024-2025 SCHOOL YEAR





STUDENT SERVICES



Gifted students are served through differentiated curriculum, cluster grouping, accelerated course work, College Credit Plus options, Advanced Placement courses, honors courses, and independent study.

The special education population in our district is currently at 13.73%. Students are served from age 3 to 22 based on the specially designed instruction and related services identified through the evaluation process.



Our continuum of services begins with our Littlest Grizzly Preschool program made up of classrooms staffed to meet the needs of diverse learners who are educated alongside peers, as well as itinerant support that provides services at community-based programs. Our K-12 services include classrooms for students who need to access the extended standards, programming for students who benefit from behavior coaching, inclusion services, co-taught learning environments and specialized instruction through pull-out support.

Our related services team includes speech and language pathologists, occupational therapists, physical therapists, a music therapist and an audiologist.



The Grizzly Academy is a program staffed and designed to meet the needs of students who thrive in a supportive, structured learning environment and benefit from wraparound supports as they learn to regulate their bodies and develop skills to succeed in the classroom.

Transition services include a work program where students with disabilities benefit from vocational opportunities in a variety of community settings. Response to Intervention is utilized district-wide in support of meeting the individual needs of students who benefit from additional support in order to access curriculum.



The district Compliance Committee focuses on making sure IEP and ETR documentation is compliant based on language, services rendered and timetables mandated. The committee works closely with the special education team and district leadership to provide ongoing professional development. The district strives to maintain a collaborative ETR/IEP process where the team focuses on students' learning and engagement.



STUDENT SERVICES

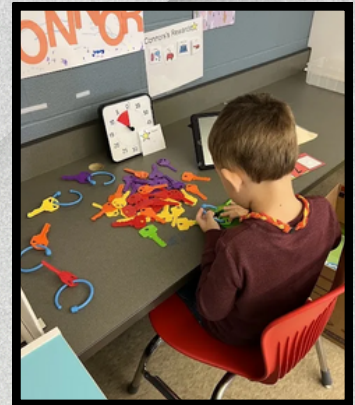


The district Positive Behavioral Interventions and Supports (PBIS) Committee works to support PBIS initiatives at the building level. PBIS recognizes that students can only meet behavior expectations if they know what the expectations are. Everyone needs the opportunity to learn what is considered appropriate behavior and develop the confidence to talk about what behaviors ensure a positive, safe learning environment for all students.

With the addition of a Student Well-Being/Mental Health Coordinator, the district continues to focus its efforts on meeting the mental health needs of our learning community. The district continues to collaborate with community agencies when providing options for our students, staff and families who seek additional mental health support. The district has a Whole Child Committee that focuses on gathering data to analyze the needs of the school community and develop a plan to meet those needs. A team of 15 counselors ensure the needs of students are met on a daily basis as wellness and safety are district priorities.

Student health is supported by a school nurse (RN), 2 LPN floats and a medical assistant or health aide in each building. This team works closely with the building staff to ensure all health plans are updated and the appropriate staff training takes place on an annual basis.

The before- and after-school Bear Cub Program serves 314 students and offers enrichment activities, homework time, and arts and crafts.





THE ARTS

REPRESENTATIVE ARTWORK FROM ALL GRADE LEVELS, WITH MULTI-MEDIA OPPORTUNITIES, ARE FEATURED EACH YEAR AT THE FINE ARTS FESTIVAL.

CONCERTS ARE HELD AT LEAST TWICE A YEAR IN BAND, CHOIR, AND PERFORMING ARTS FOR GRADES 5-12.

THE 7TH AND 8TH GRADE BANDS PERFORMED AT THE OHIO MUSIC EDUCATION ASSOCIATION LARGE GROUP CONTEST, EACH EARNING A SUPERIOR RATING.

THE 8TH-GRADE BANDS PERFORMED AT THE MUSIC IN THE PARKS BAND COMPETITION, EARNING A SUPERIOR RATING.

THE HIGH SCHOOL MARCHING BAND PERFORMED AT THE PEACH BOWL PREGAME CELEBRATION AND PEACH BOWL PARADE RECEIVING FIRST PLACE IN THEIR DIVISION AND PARADE GRAND CHAMPION.

THE HIGH SCHOOL WIND ENSEMBLE AND SYMPHONIC BAND PERFORMED AT THE OHIO MUSIC EDUCATION ASSOCIATION LARGE GROUP CONTEST, EACH EARNING A SUPERIOR RATING.

DURING THE 2023-2024 SCHOOL YEAR, INSTRUMENTAL STUDENTS PERFORMED WITH THE OHIO MUSIC EDUCATION ASSOCIATION ALL-STATE BAND, CLEVELAND ORCHESTRA YOUTH ORCHESTRA, OHIO BAND DIRECTORS CONFERENCE HONOR BAND, CAPITAL UNIVERSITY HONOR BAND, KENT STATE HONORS BAND, AND THE OHIO STATE UNIVERSITY HONOR BAND. ADDITIONALLY, THE WIND ENSEMBLE STUDENTS RECEIVED A SUPERIOR RATING AT THE OHIO MUSIC EDUCATION ASSOCIATION ADJUDICATED EVENT AND SOLO & ENSEMBLE CONTEST.

SENIOR PORTFOLIOS ARE SHOWCASED AT THE FINE ARTS FESTIVAL AND THEN USED AS COLLEGE ADMISSIONS INTO THE FINE ARTS FIELD.

NUMEROUS COURSE OFFERINGS IN GRADES K-12 INCLUDE: BAND (CONCERT, SYMPHONIC, WIND ENSEMBLE, JAZZ, MARCHING), CHOIR (PERFORMANCE, MIXED, SHOW, ELITE), ELEMENTARY ART, ELEMENTARY MUSIC, GENERAL MUSIC, INTRODUCTION TO ART, 2-DIMENSIONAL DESIGN I AND II, 3-DIMENSIONAL DESIGN I AND II, ADVANCED ART, ART APPRECIATION AND AP ART.



DURING THE 2024-2025 SCHOOL YEAR, THE WADSWORTH DRAMA DEPARTMENT PERFORMED 6 PRODUCTIONS AMONG GRADES 7-12. STUDENTS FROM OUR SPRING MUSICAL PARTICIPATED IN THE DAZZLE AWARDS AT PLAYHOUSE SQUARE IN CLEVELAND. WE ALSO HOSTED A WEEK-LONG MUSICAL THEATER CAMP IN JUNE FOR GRADES 1-8, LED BY OUR DIRECTORS AND HIGH SCHOOL DRAMA AND CHOIR STUDENTS.





FISCAL STEWARDSHIP

The Wadsworth City Schools once again received the Auditor of State Award for Excellence in Financial Reporting for the 2023-2024 school year.

The Wadsworth City Schools continue to receive a AA- credit rating from Standard and Poors and a Aa2 rating from Moody's. These positive ratings have saved the district millions of dollars in financing costs related to the construction of new school buildings.

Wadsworth City School District's 2024 expenditure per pupil was \$15,005. This is \$1,305 less than the State average of \$16,310.

Wadsworth City Schools' total effective operating millage is 5.28 mills LESS than it was in 1976. In other words, the tax rate today is less than it was in 1976.

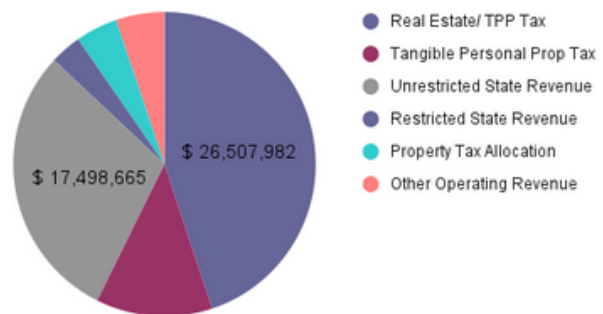
The Board of Education in collaboration with our construction team, opened the new Intermediate School on time and within the revised budget, during a period of unprecedented escalation of construction costs.

The Wadsworth City Schools are members of the Four Cities Career Tech Compact. By being a member of the compact residents of Wadsworth City Schools do not pay the two mills of taxation to the Medina County Career Center that the rest of Medina County pays.

Financial Information 2024-25 School Year Revenue:

	FY 2025
Real Estate/ TPP Tax	\$ 26,507,982
Tangible Personal Prop Tax	\$ 7,343,892
Unrestricted State Revenue	\$ 17,498,665
Restricted State Revenue	\$ 1,980,129
Property Tax Allocation	\$ 2,644,715
Other Operating Revenue	\$ 3,072,032
	\$ 59,047,415

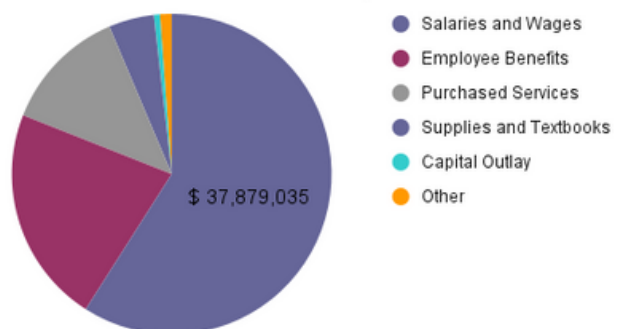
Wadsworth City School District
2024-25 Total General Fund Revenue



Expenditures:

Salaries and Wages	\$ 37,879,035
Employee Benefits	\$ 14,078,898
Purchased Services	\$ 8,106,890
Supplies and Textbooks	\$ 2,940,556
Capital Outlay	\$ 397,371
Other	\$ 755,897

Wadsworth City School District
2024-25 Total General Fund Expenditures





BOARD OF EDUCATION



Front Row: Jill Stevens, Julie Batey
Back Row: Gary McComas, Amanda Gordon, Tim Beck



Andrew J. Hill, Ed.D.
Superintendent
ahill@wadsworthschools.org



Douglas Beeman
Treasurer
dbeeman@wadsworthschools.org

Mission

Wadsworth City Schools, in cooperation with families, school personnel, and community, is committed to providing a quality education that will empower students to reach their highest potential while promoting a culture of mutual respect and acceptance of all.



PARENT AND COMMUNITY INVOLVEMENT

Over 400 community volunteers throughout the District
Wadsworth PTO units in each school

District employees have served/currently serve on the following community service boards: Chamber of Commerce, Library Foundation, Lions, the YMCA, Wadsworth Historical Society, Wadsworth Older Adults Foundation, Wadsworth Grizzlies Community Foundation, and the Wadsworth Scholarship Foundation.

Key partnership with the City of Wadsworth, including the sharing of expenses for school resource officers

Community Center part of the high school campus

Interagency Agreement with Head Start, Help Me Grow, and the Medina County Board of Developmental Disabilities

Partnership with the Medina County Courts (CARE Team) Partnerships with local colleges/universities

Partnership with the Medina County Courts (CARE Team) Partnerships with local colleges/universities

Active booster groups, including athletics, band, drama and choir

A+ Partnership with the Wadsworth Public Library

United Way drives in each building

Sponsor of yearly blood drives

Four Cities Compact partnership with SME Prime, Dominion Energy, Summa Health, and many other area businesses

Partnership with Feeding Medina County



Area business representatives serve on the Business Advisory Council.

Partnership with Red Oak Behavior Health, Bellefaire JCB,

Ohio Guidestone, Freshwater Church, Western Reserve Grief Services,

and Cornerstone Psychological and Counseling Services

Partnership between Franklin Elementary School and the University of Akron

OASIS tutoring program

Big Brothers/Big Sisters program through the United Way



COMMUNICATION

**FOLLOW
US** 

Facebook

<https://www.facebook.com/WadsworthCitySchools>

Twitter/X

<https://x.com/WCSGrizzlies>

On The Web

<https://www.wadsworthschools.org/>

**STAY
CONNECTED**

Email: Sign up for our e-mail distribution list by sending a request to

lgiermann@wadsworthschools.org



Phone calls: Sign up to receive Alert Now phone messages by sending a request to lgiermann@wadsworthschools.org.



Our Schools

Wadsworth City Schools, Administration, 524 Broad Street
Franklin Elementary, K-4, 200 R.L. Havens Crescent
Grizzly Academy, K-12, 524 Broad Street
Isham Elementary, K-4, 325 Sunset Boulevard
Lincoln Elementary, K-4, 280 N. Lyman Street
Overlook Elementary, PK-4, 650 Broad Street
Valley View Elementary, K-4, 625 Orchard Street
Wadsworth Intermediate, 5 & 6, 675 Broad Street
Wadsworth Middle School, 7 & 8, 150 Silvercreek Road Wadsworth
High School, 9-12, 625 Broad Street



SUMMARY

Through the generous support of our community, the Wadsworth City School District is able to provide an exemplary educational experience for our students. As this Quality Profile demonstrates, there is more to a school district than what is reported on the annual State of Ohio Report Card.

Our district is fortunate to have highly qualified and motivated faculty and staff devoted to furthering the education of every student in our district.

While we have been very successful in the past on the State of Ohio Report Card, we recognize that continuous improvement is always needed. There is no standing still in education; either we move forward or we fall backward as a result.

The partnerships our district has built within our community provide us with the support necessary to strive for excellence each day and further the opportunities for our most important asset, our students, who are the future of our great community.

Thank you for your continued support of our school district. We are proud to serve you and your children.

