



School Accountability Committee

9.8.25
3:00-3:30 PM



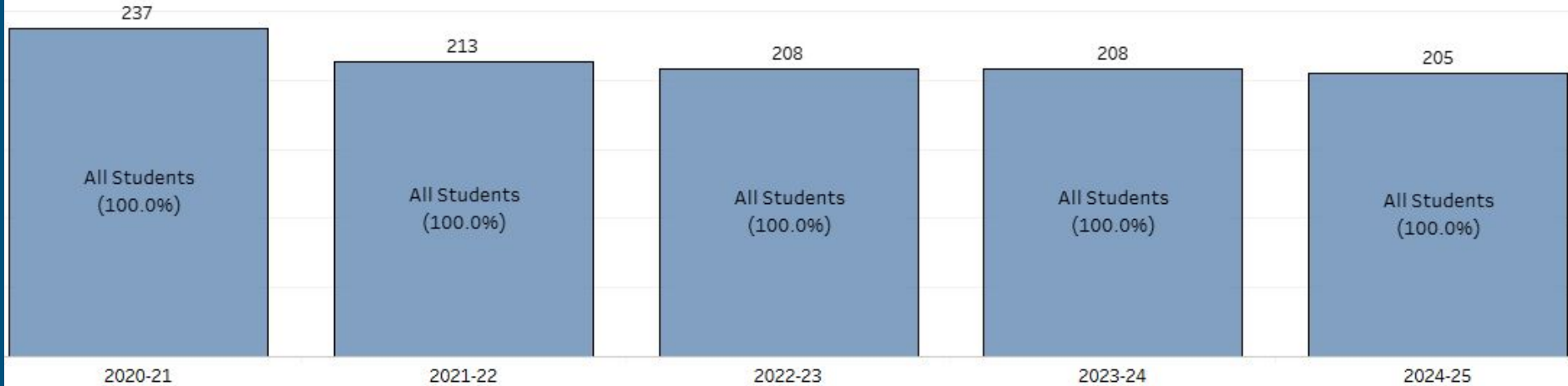
Welcome!!

Introductions

Good Things

Enrollment

All Students | Total Enrollment



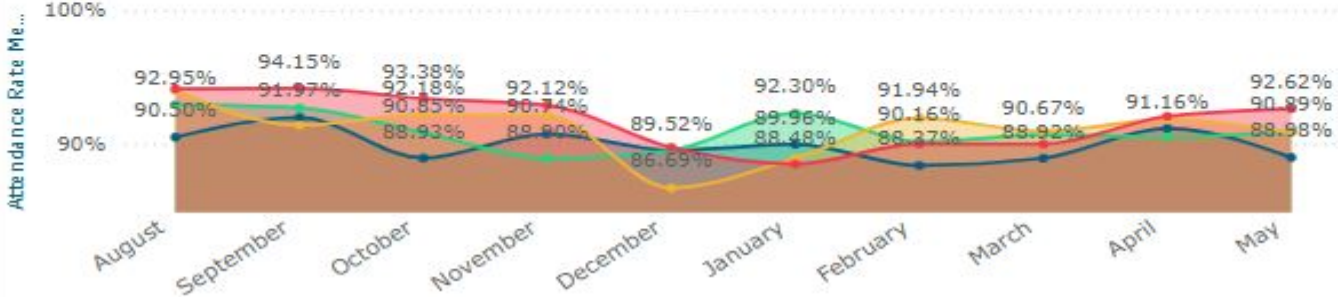
Attendance School Year 2024-25

Current School Year Attendance Rate

91.76%

Attendance Rate Over Time

● 2022 ● 2023 ● 2024 ● 2025



The cumulative attendance rate for Carver ES in the current school year (2025) is 91.76%. This is an improvement compared to the previous years, with the attendance rates for the same months in 2024, 2023, and 2022 being lower. Specifically, the attendance rates for August, September, and October in 2025 were 94.12%, 94.15%, and 93.38%, respectively, showing a positive trend compared to the same months in previous years.

Days Absent over Time 2024-25

Per Period Attendance Rate

Periods Attended / Periods
Possible

93.7%

Attendance Metric Description

(active/enrolled students only)

Average per period attendance rate is the number of periods attended divided by the number possible. All attendance metrics are updated nightly. The values shown are from the previous school day.

Chronic Absenteeism. A student is considered "chronically absent" if they have below 90% attendance.

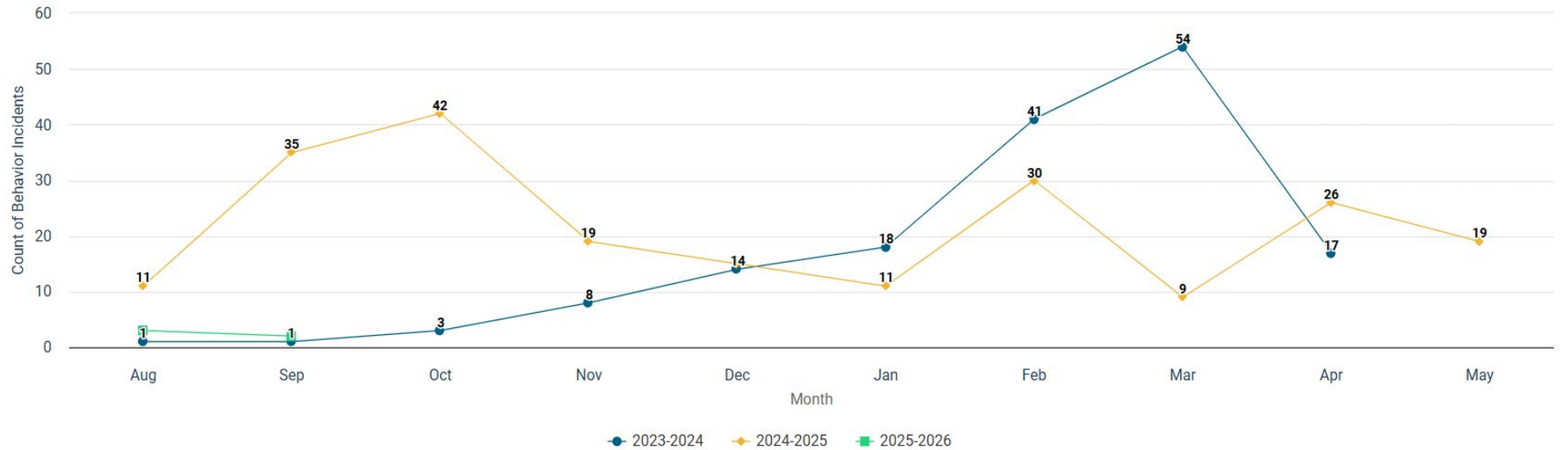
Chronic Absenteeism

Chronically Absent Rate:
10% or More Missed

25.4%

Behavior Incident Analysis

Includes Active and Inactive Students



STAR Reading 3rd-5th Fall Beginning of Year

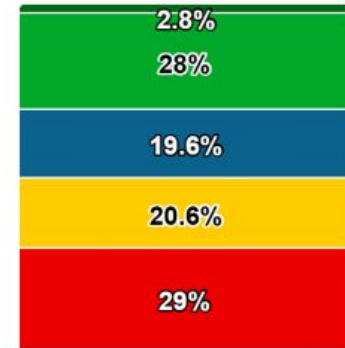
• In Fall 2025-26, 30.8% of students are projected to meet the state reading benchmark, up from 25.4% in Fall 2024-25. During 2024-25, the projected proficiency rate fluctuated between 25% and 29.9%.

• Third grade shows the highest projected proficiency at 41.7%, followed by second grade at 37% and fifth grade at 32%. Fourth grade shows notably lower projected proficiency at 16.7%.

• Current data shows variation across grade levels with a 25 percentage point difference between the highest performing grade (3rd) and lowest performing grade (4th).

Star Reading Proficiency Rate (State Benchmark)

Fall 2025-2026



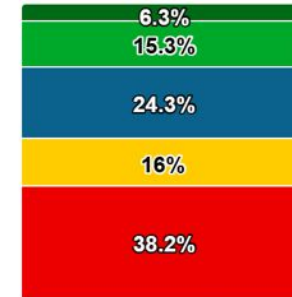
- Exceeded Expectations
- Met Expectations
- Approached Expectations
- Partially Met Expectations
- Did Not Yet Meet Expectat...

STAR Math 3rd-5th Fall Beginning of Year

- In Fall 2025-26, 21.5% of students are projected to meet the state math benchmark, showing little change from Fall 2024-25 when 20.9% were projected to meet the benchmark.
- Third grade shows the highest projected proficiency at 48%, while fourth grade shows the lowest at 6.5%. This represents a significant difference in projected performance across grade levels.
- During 2024-25, projected proficiency rates fluctuated between 18.9% and 25.7% across screening windows, with the highest projection occurring in Spring 2024-25.

Star Math Proficiency Rate (State Benchmark)

Fall 2025-2026



- Exceeded Expectations
- Met Expectations
- Approached Expectations
- Partially Met Expectations
- Did Not Yet Meet Expectat...

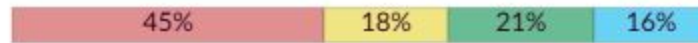
EXPLORE

Kindergarten- Third Grade BOY DIBELS

Carver Elementary
School

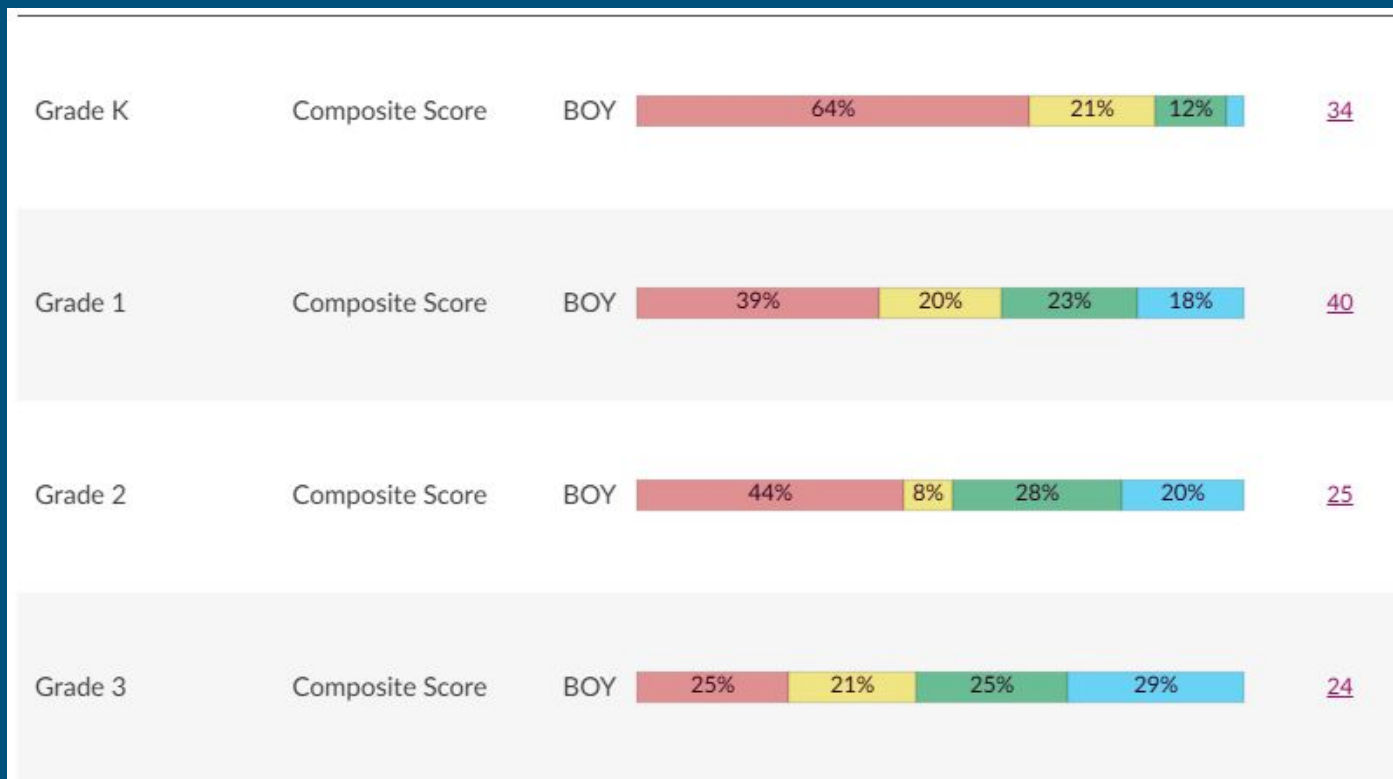
Composite Score

BOY



123

Kindergarten-3rd Grade DIBELS



5 Essentials Survey 2024-2025

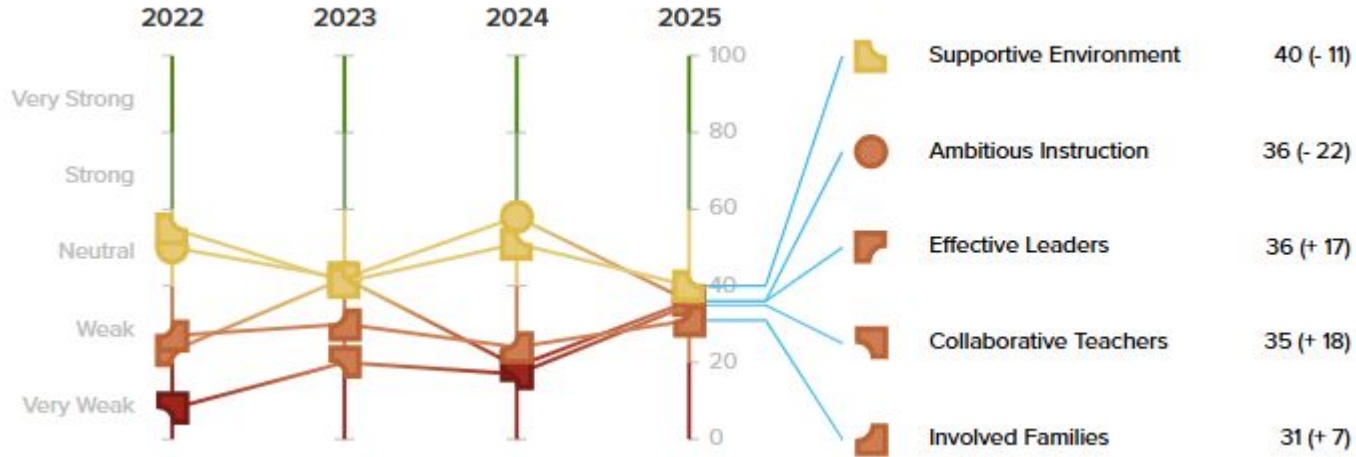
98% of Students completed

73% of Staff Completed

Not yet organized for improvement



5 Essentials Trends



School Performance Framework



2022 Preliminary Transitional Performance Framework

1340: Carver Elementary School | 1010: Colorado Springs 11

Grade Levels: E - (1 Year)

Plan Type Official Rating based on 1-Year SPF Report

Priority Improvement Plan: Meets 95% Participation

40.0/100
Points Earned

Year 0^

See the final page of this report for a discussion of unique contextual factors that may impact the 2022 transitional performance framework results.

The performance framework evaluates district and school performance on Academic Achievement, Academic Growth, and Postsecondary & Workforce Readiness indicators. The percentage of points earned across all indicators determines the final accreditation rating for a district or the final plan type for a school, which is displayed above. The cut points for final ratings established by the State Board of Education are shown at the right of this page. Failure to meet test participation, safety, and finance assurances may result in a rating being lowered by one level. Refer to the scoring guide near the end of this report for more details on how ratings are determined.

Indicator Rating Totals

Performance Indicator	Percent of Points Earned	Points Earned/ Eligible	Rating
Academic Achievement	25.0%	10.0/40	Does Not Meet
Academic Growth	50.0%	30.0/60	Approaching

Assurances

	Rating
Accountability Participation Rate	Meets 95%

Performance

Improvement **40.0%**

Priority Imp

Turnaround

School plan types are based on the total percentage of points earned.

Performance Plan:

53.0% - 100%

Improvement Plan:

42.0% - 52.9%

Priority Improvement Plan:

34.0% - 41.9%



2023 Preliminary School Performance Framework

1340: Carver Elementary School | 1010: Colorado Springs 11

Grade Levels: E - (1 Year)

Plan Type Official Rating based on 1-Year SPF Report

Improvement Plan

44.8/100
Points Earned

The performance framework evaluates district and school performance on Academic Achievement, Academic Growth, and Postsecondary & Workforce Readiness indicators. The percentage of points earned across all indicators determines the final accreditation rating for a district or the final plan type for a school, which is displayed above. The cut points for final ratings established by the State Board of Education are shown at the right of this page. Failure to meet test participation, safety, and finance assurances may result in a rating being lowered by one level. Refer to the scoring guide near the end of this report for more details on how ratings are determined.

Indicator Rating Totals

Performance Indicator	Percent of Points Earned	Points Earned/ Eligible	Rating
Academic Achievement	35.4%	14.2/40	Does Not Meet
Academic Growth	51%	30.6/60	Approaching

Assurances

	Rating
Accountability Participation Rate	Meets 95% Participation

Performance

Improvement **44.8%**

Priority Imp

Turnaround

School plan types are based on the total percentage of points earned.

Performance Plan:

53.0% - 100%

Improvement Plan:

42.0% - 52.9%

School Performance Framework 2024



2024 Preliminary School Performance Framework

1340: Carver Elementary School | 1010: Colorado Springs 11

Grade Levels: E - (1 Year)

Plan Type

Official Rating based on SINGLE-YEAR SPF Report

Improvement Plan

37.2/100
Points Earned

Year 1

The performance framework evaluates district and school performance on Academic Achievement, Academic Growth, and Postsecondary & Workforce Readiness indicators. The percentage of points earned across all indicators determines the final accreditation rating for a district or the final plan type for a school, which is displayed above. The cut points for final ratings established by the State Board of Education are shown at the right of this page. Failure to meet test participation, safety, and finance assurances may result in a rating being lowered by one level. Refer to the scoring guide near the end of this report for more details on how ratings are determined.

Performance



School plan types are based on the total percentage of points earned.

Performance Plan:
53.0% - 100%

Improvement Plan:
42.0% - 52.9%

Priority Improvement Plan:
34.0% - 41.9%

Indicator Rating Totals

Performance Indicator	Percent of Points Earned	Points Earned/Eligible	Rating
Academic Achievement	32.0%	12.8/40	Does Not Meet
Academic Growth	40.6%	24.4/60	Approaching

Assurances

Assurance	Rating
Participation	Meets 95% Participation

School Performance Framework 2025

1340: Carver Elementary School | 1010: Colorado Springs 11

Grade Levels: E - (1 Year)

Plan Type

Official Rating based on SINGLE-YEAR SPF Report

Turnaround Plan

31.6/100
Points Earned

Year 1

The performance framework evaluates district and school performance on Academic Achievement, Academic Growth, and Postsecondary & Workforce Readiness indicators. The percentage of points earned across all indicators determines the final accreditation rating for a district or the final plan type for a school, which is displayed above. The cut points for final ratings established by the State Board of Education are shown at the right of this page. Failure to meet finance, assessment, and safety assurances may result in a lowered rating. Refer to the scoring guide near the end of this report for more details on how ratings are determined.

Indicator Rating Totals

Performance Indicator	Percent of Points Earned	Points Earned/ Eligible	Rating
Academic Achievement	32.0%	12.8/40	Does Not Meet
Academic Growth	31.3%	18.8/60	Does Not Meet

Assurances

	Rating
Participation	Meets 95% Participation

Test Participation Rates and Total Participation Rate Descriptors

Performance

Improvement

Priority Imp. **31.6%**

Turnaround

School plan types are based on the total percentage of points earned.

Performance Plan:
53.0% - 100%

Improvement Plan:
42.0% - 52.9%

Priority Improvement Plan:
34.0% - 41.9%

Budget

All schools in District 11 have Site Based Budgeting

Staffing at Carver

1 Principal, 1 Counselor, 1 MTSS Coordinator, 1 School Embedded Coach, 1 Library Technology Educator

2 Kinder Teachers, 2 Kinder aides (6 hours), 2 First Grade, 1 Second Grade, 1 Third Grade, 2 Fourth Grade, and 1 Fifth Grade Teacher

2 Classroom Size Aides (second and third grade) to be hired

1 PE Teacher, 0.5 Art Teacher, 0.6 Music Teacher

Budget

0.5 Interventionist, 1 Hourly tutor (4 hours per day)

1 Community Liaison

2 Special Education Teachers, 3 Paraprofessionals

2 ELL Teachers

Title budget-pays for 2 classroom teachers, family nights, and teacher compensation for family nights, Capturing Kids' Hearts online curriculum

Major Improvement Strategy #1

Carver Elementary will integrate coaching and feedback cycles to create an environment where students exercise agency in their learning in order to increase engagement and academic achievement. At Carver, we will focus on coaching and feedback cycles as our primary lever.

Major Improvement Strategy #2

Carver Elementary will integrate MTSS Systems to create an environment where students and families are engaged and empowered resulting in improved academic achievement, attendance, and behavior. At Carver we will strengthen and sustain MTSS Systems as our primary lever.

Carver Elementary Vision

As a quality neighborhood school in D11, the Carver community is supportive and safe as staff, parents, and students are valued and involved in creating engaging, intentional learning experiences that are responsive to student needs and results in a place where everyone wants to be.

Upcoming Events

Cross Country-First Meet at Carver September 9th!

YES Program begins today for Soccer-Grades 2nd-5th Flag Football/Cheer, Volleyball, Fit Kids, Game On

Pancakes with the Principal-Last Friday of each month for demonstrating Character Trait of the Month-

Empathy-Friday, September 26th

Carver Color Run-Friday, September 19th from 1:45-2:45 PM

Upcoming Events

Scholastic Book Fair September 22nd-26th

**Carver Title I Literacy Night-Thursday, September 25th
4:00-6:00 PM**

End of First Quarter-October 9th

October 10th No School

October 20th Parent Teacher Conferences

October 20-24th No School Fall Break

Thank you for your time!!

We need YOU! We need to partner with you to share ideas of how we can support our students and each other!

Please join us!

Next Meeting is in October.