



RUSD

RIVERSIDE UNIFIED
SCHOOL DISTRICT



Ofelia Valdez-Yeager Eastside Elementary School Attendance Boundary Scenarios

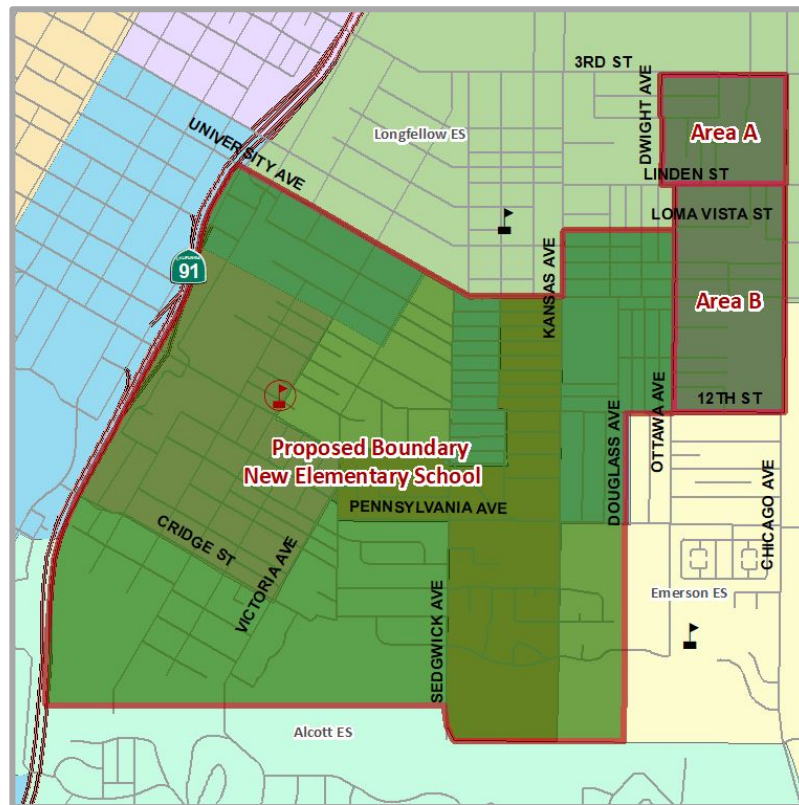
Citizens' Bond Oversight Committee

September 17, 2025

Tim DeLand, Director
Facilities, Planning, & Development

Boundary Option One

School	2024/25 Enrollment	Students Residing in Eastside	Projected Enrollment
Alcott Elementary	607	-145	462
Castle View Elementary (DLI)	684	-202	482
Magnolia Elementary	535	-124	411
Pachappa Elementary	681	-254	427
Taft Elementary	635	-289	346
Ofelia Valdez-Yeager Eastside Elementary School	N/A	856	856
Longfellow ES or Boundary Area A	703	101	804
Emerson ES or Boundary Area B	674	Net 57	731



ENROLLMENT DATA FROM CENSUS DAY 10.3.2024

Boundary Option Two

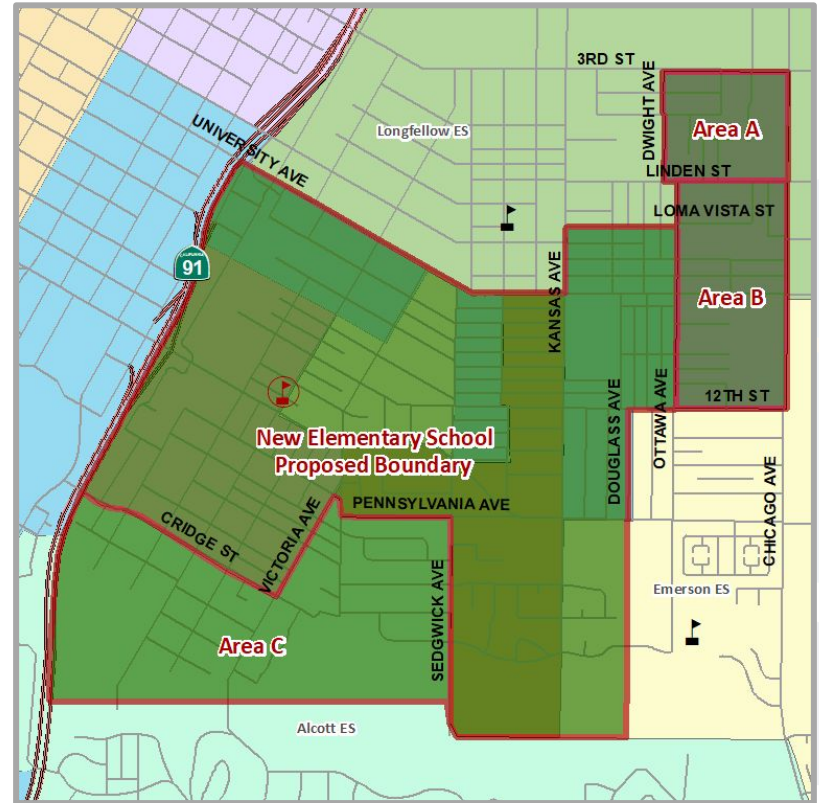
School	2024/25 Enrollment	Students Residing in Eastside	Projected Enrollment
Castle View Elementary (DLI)	684	-202	482
Emerson Elementary	674	-131	543
Magnolia Elementary	535	-124	411
Pachappa Elementary	681	-254	427
Taft Elementary	635	-289	346
Ofelia Valdez-Yeager Eastside Elementary School	N/A	899	899
<i>Longfellow ES or Boundary Area A</i>	703	101	804
<i>Alcott ES or Boundary Area C</i>	607	<i>Included</i>	607



ENROLLMENT DATA FROM CENSUS DAY 10.3.2024

Boundary Option Three

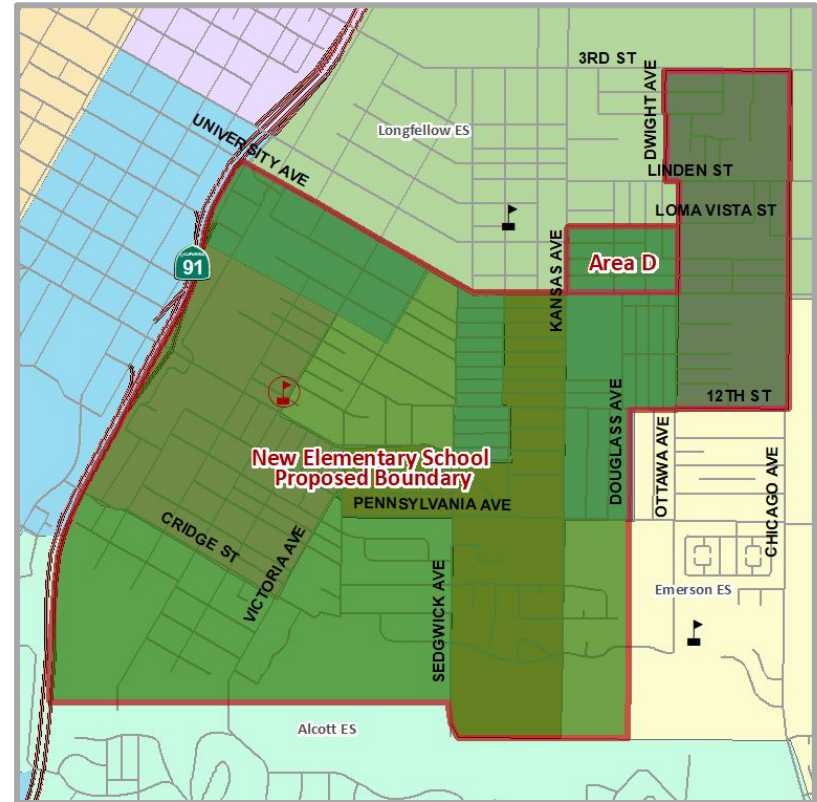
School	2024/25 Enrollment	Students Residing in Eastside	Projected Enrollment
Castle View Elementary (DLI)	684	-202	482
Magnolia Elementary	535	-124	411
Pachappa Elementary	681	-254	427
Taft Elementary	635	-289	346
Ofelia Valdez-Yeager Eastside Elementary School	N/A	711	711
<i>Longfellow ES or Boundary Area A</i>	703	101	804
<i>Emerson ES or Boundary Area B</i>	674	Net 57	731
<i>Alcott ES or Boundary Area C</i>	607	Included	607



ENROLLMENT DATA FROM CENSUS DAY 10.3.2024

Boundary Option Four

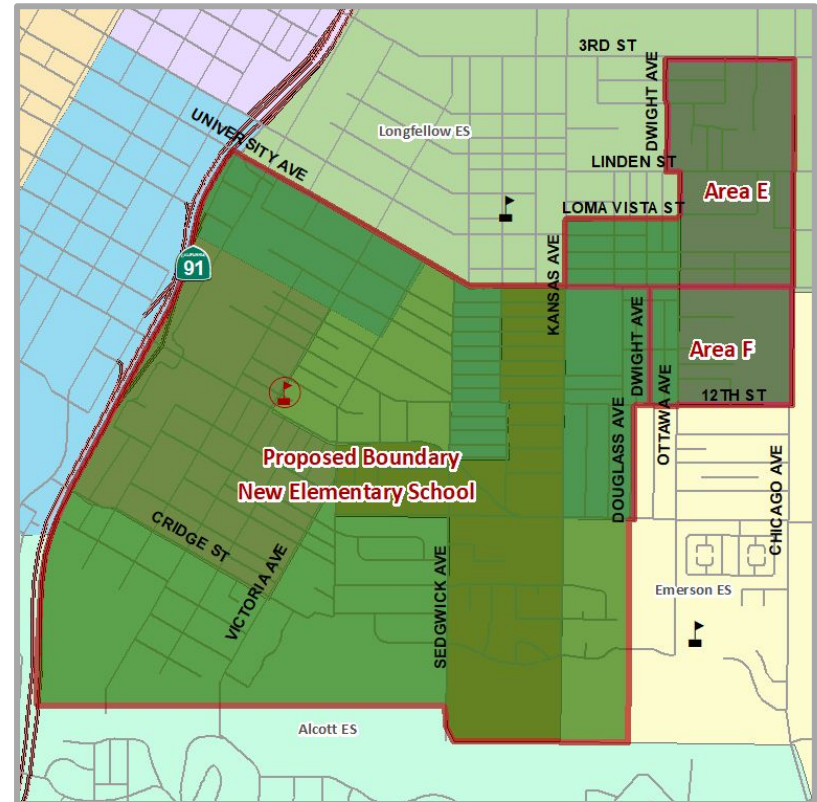
School	2024/25 Enrollment	Students Residing in Eastside	Projected Enrollment
Alcott Elementary	607	-145	462
Castle View Elementary (DLI)	684	-202	482
Magnolia Elementary	535	-124	411
Pachappa Elementary	681	-254	427
Taft Elementary	635	-289	346
Ofelia Valdez-Yeager Eastside Elementary School	N/A	1103	1103
<i>Longfellow ES or Boundary Area D</i>	703	42	745



ENROLLMENT DATA FROM CENSUS DAY 10.3.2024

Boundary Option Five

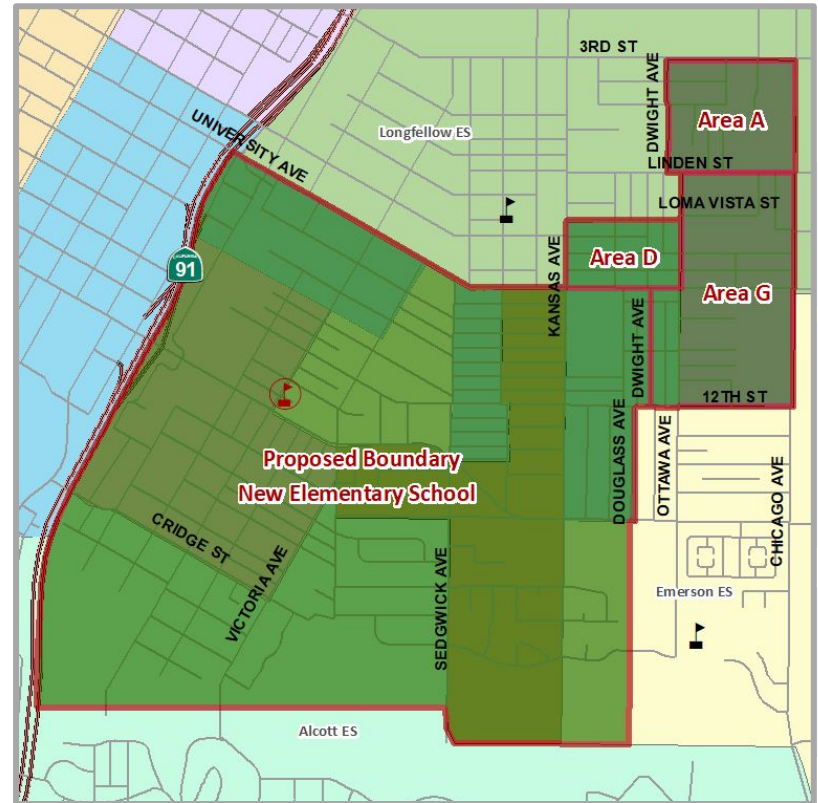
School	2024/25 Enrollment	Students Residing in Eastside	Projected Enrollment
Alcott Elementary	607	-145	462
Castle View Elementary (DLI)	684	-202	482
Magnolia Elementary	535	-124	411
Pachappa Elementary	681	-254	427
Taft Elementary	635	-289	346
Ofelia Valdez-Yeager Eastside Elementary School	N/A	783	783
Longfellow ES or Boundary Area E	703	297	1000
Emerson ES or Boundary Area F	674	Net -66	608



ENROLLMENT DATA FROM CENSUS DAY 10.3.2024

Boundary Option Six

School	2024/25 Enrollment	Students Residing in Eastside	Projected Enrollment
Alcott Elementary	607	-145	462
Castle View Elementary (DLI)	684	-202	482
Magnolia Elementary	535	-124	411
Pachappa Elementary	681	-254	427
Taft Elementary	635	-289	346
Ofelia Valdez-Yeager Eastside Elementary School	N/A	783	783
Longfellow ES or Boundary Areas A & D	703	143	846
Emerson ES or Boundary Area G	674	Net 88	762

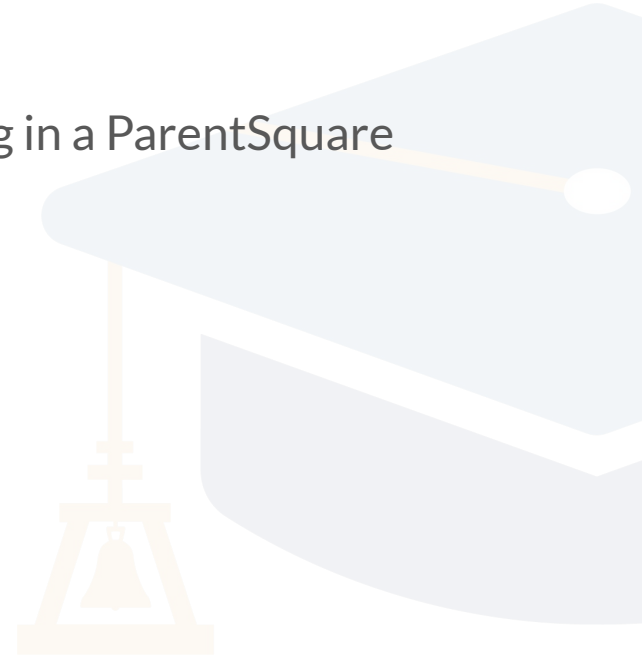


ENROLLMENT DATA FROM CENSUS DAY 10.3.2024

Groundbreaking Ceremony

A groundbreaking ceremony for Ofelia Valdez-Yeager Eastside Elementary School will be held on Thursday, September 25 at 9 AM.

Vote for your preferred boundary option by participating in a ParentSquare poll accessed by scanning this QR code:





RUSD

**RIVERSIDE UNIFIED
SCHOOL DISTRICT**

**PUBLIC
COMMENTS**