

EASTMAN UPDATE

Progress Timeline

- 01
- 06
- 08
- 12
- 19
- 27
- 29



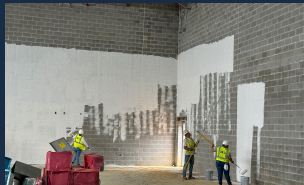
2nd floor soffit framing (Area A)



Brick veneer column wrap & flashing



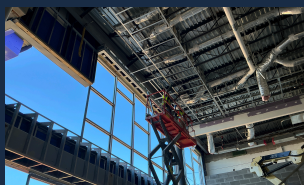
Entry spray foam (Area A)



Blockfill paint in gym (Area D)



Solar panel delivery & install

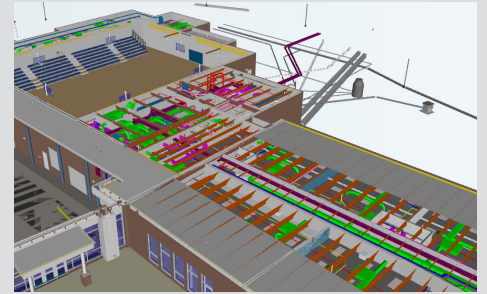


Overhead ceiling framing above Learning Stair (Area A)



ABC stone placement and grading

CEILING IS SET FOR SYSTEMS



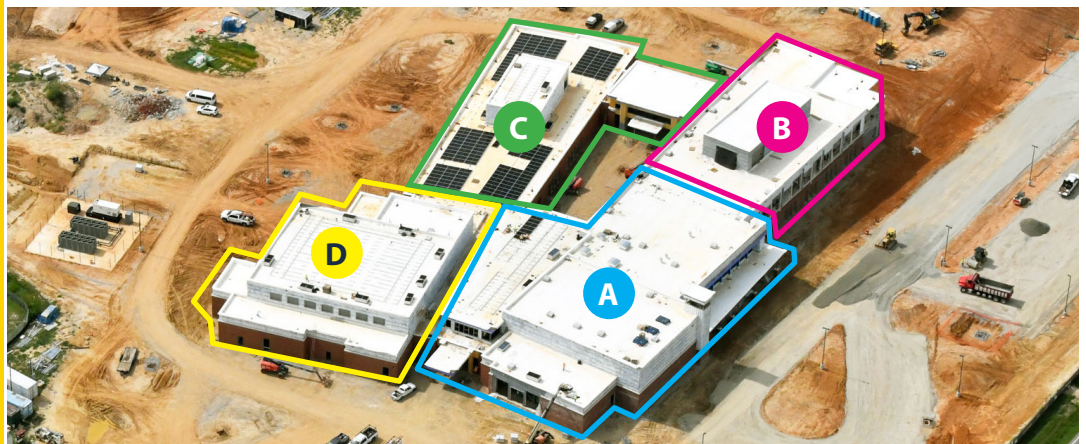
The BIM Model uses a color code to help us know how each system will fit together.

A building's ceiling contains much more than empty space - it is the backbone of all the systems that will keep people safe and comfortable. In this phase of construction, called, "MEP (Mechanical, Electrical, and Plumbing) Rough-In", essential parts like pipes, wires, and ducts are installed. Before the process begins, we use BIM Modeling to carefully analyze each part of the system to make sure it fits together.



Ceiling grids are installed after Rough-In to support ceiling tiles, vents, and lights.

BUILDING UPDATES



August 20, 2025

30 DAY CONSTRUCTION LOOK-AHEAD



- Metal wall panel installation beginning
- Solar Array System installation ongoing
- Storefront and Glazing installation continues
- Overhead MEP work is nearing completion
- Interior finishes will continue
- Site work continues with rough grading of ball fields
- Beginning water relocation on Hwy 48 shortly