



HIGH SCHOOL Profile 2025-2026

MISSION STATEMENT

Through outstanding teaching in a nurturing environment, ISB inspires students to achieve their academic and personal potential; become caring, global citizens; be passionate, reflective learners; and lead healthy, active, balanced lives.

At ISB, we develop college- and life-ready learners who are:



VALUE-DRIVEN



SOCIALLY-INTELLIGENT



SELF-MANAGING



CREATIVE



GLOBALLY-MINDED



ADAPTABLE

UNIVERSITY COUNSELORS

Curt Nichols
Director of University Counseling
curtn@isb.ac.th

Becky Konowicz
rebeccak@isb.ac.th

Doug McQueen
douglasm@isb.ac.th

Swati Shrestha
swatis@isb.ac.th

Taylor Siedell
taylors@isb.ac.th

SCHOOL LEADERSHIP

Dr. Sascha Heckmann
Head of School

Dr. Kate McKenna
High School Principal

Kristen Feren
Dean of Academics

Andy Vaughan
Dean of Students

39/7 SOI NICHADA THANI, SAMAKEE ROAD,
PAKKRET, NONTHABURI 11120
TELEPHONE: +66 2963 5800 | COUNSELING
OFFICE: +66 2963 5890

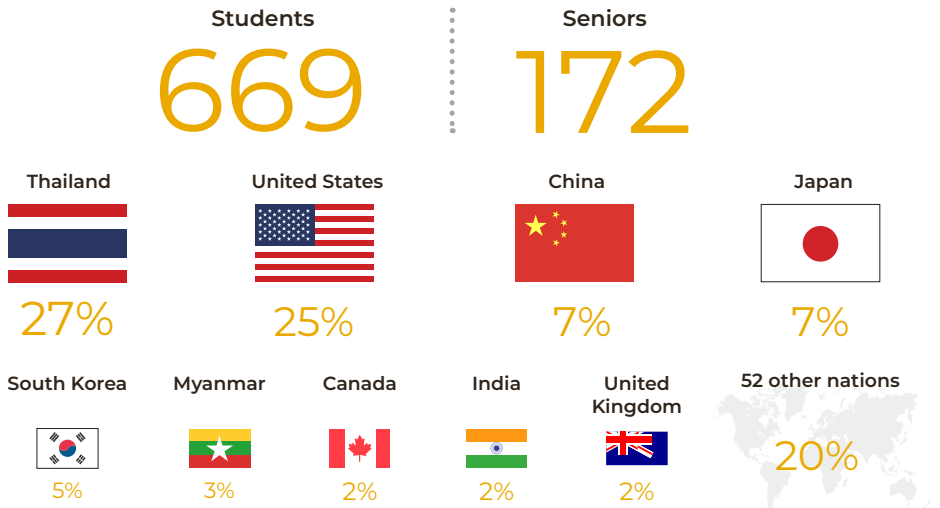
www.isb.ac.th

ISB COMMUNITY

ISB enrolls approximately 1,800 students on its Pre-Kindergarten to Grade 12 campus, located 25 km north of downtown Bangkok. All academic courses, with the exception of those offered in the World Languages department, are taught in English. The school is an open-enrollment independent school that prides itself on the diversity of its learners, of which just over 60% speak a language other than English as a primary language. ISB is accredited by the Western Association of Schools and Colleges (WASC).

Many of our students carry multiple passports and have lived in multiple countries. Our high school teachers are equally diverse in geographic and national origin, bringing a wide range of perspectives and cultures to the classroom. 86% of our high school faculty members hold advanced degrees.

HIGH SCHOOL



LIMITS AND POLICIES

Course Load

- IB Diploma Students:** maximum of 3 HL courses; cannot take AP courses
- Non-IB Diploma Students:** maximum of 4 AP/HL courses per year in Grades 11 and 12

Activities

- Leadership on clubs and councils are limited to a maximum of 3 officer positions, including being a council member (except by appeal)

Applications

- Students may apply to a maximum of 15 colleges and universities worldwide



CEEB: 695 220 | 1

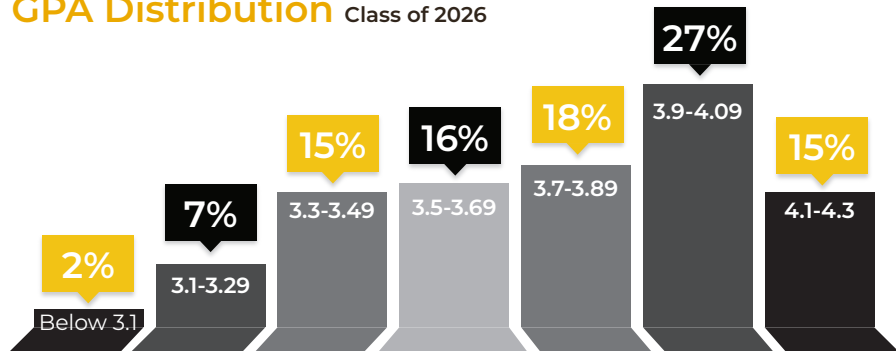
NEW GRADING SYSTEM AND GPA DISTRIBUTION

ISB has transitioned from 7-1 to an A-F grading scale. Class of 2026 transcripts will show only A-F grades. Below is a GPA distribution that includes grades in all high school courses for students in the Class of 2025. ISB does not rank its students.

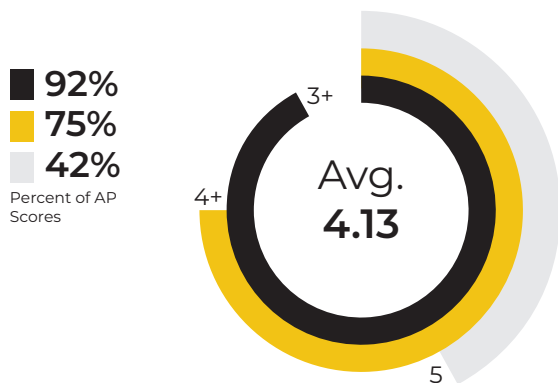
Grading System

A+	4.3
A	4.0
A-	3.7
B+	3.3
B	3.0
B-	2.7
C+	2.3
C	2.0
C-	1.7
D	1.0
F	0.0

GPA Distribution Class of 2026



AP Results May 2025



AP Development

138 students
took 275 exams in 2025

28 students
took 33 exams in 2024

IB Results Class of 2025

- 136 students (97 Diploma candidates) took exams in 68 different IB courses and levels
- As an inclusive school, we are committed to successfully serving students representing a full range of learning styles. As such, we support all students who wish to attempt the full IB Diploma Program.

Historical Data	2025	2024	2023
Students with 40+ Points (%)	16%	17%	10%
Diploma Pass Rate (%)	98%	97%	97%
Subject Scores of 6/7 (%)	42%	50%	44%
Average Grade per Subject	5.3%	5.4	5.3
Average Total Points	34	35	34
Bilingual Diplomas (%)	34%	41%	42%

SAT Results Class of 2026

121 members of the Class of 2026 took the SAT as part of their post-secondary planning

SAT EBRW

Middle 50%

575-690

EBRW

Mean

634

SAT MATH

Middle 50%

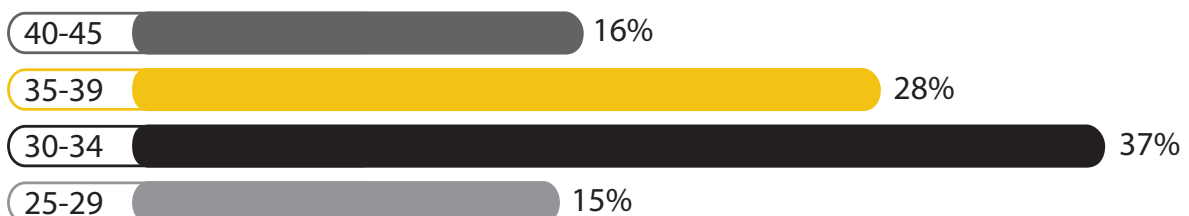
610-740

MATH

Mean

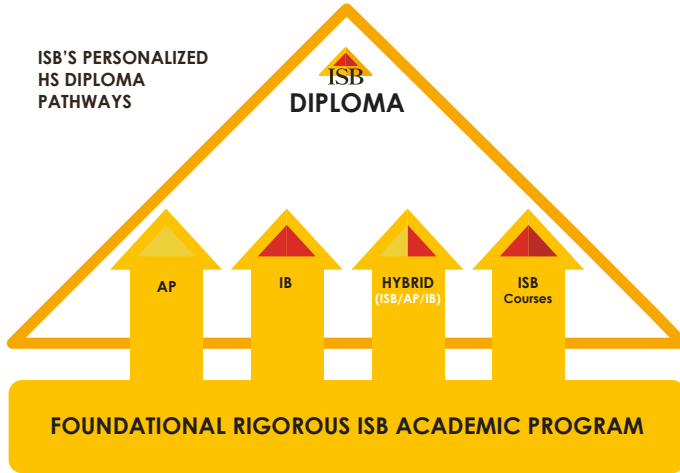
667

IB Diploma Score



CURRICULUM AND GRADUATION REQUIREMENTS

ISB offers its students multiple academic pathways. All ISB students earn a US high school diploma upon graduation, and 55% of the Class of 2026 are also enrolled in the International Baccalaureate (IB) Diploma Programme. In addition, they have the opportunity to enroll in individual Advanced Placement (AP) courses, International Baccalaureate (IB) courses or a combination of the two and can pursue the AP Capstone. All students in Grades 11 and 12 complete the Creativity, Activity, Service (CAS) component of the IB, even if they are not enrolled in IB coursework. Students engage in various service projects during their time at ISB and participate in the school's weeklong Discover Explore Learn Volunteer Enrich (DELVE) program each year. **A total of 25 credits are required for graduation.**



Minimum graduation requirements are as follows:

Subject	Credit
English	4.0
Mathematics	2.0
Science	2.0
Social Studies	2.0
World Languages	2.0
Physical Education	1.5
Fine, Performing and Applied Arts	1.5
Health	0.5
Academic Electives, including DELVE	9.5

MOST ADVANCED COURSES FOR THE 2025-2026 ACADEMIC YEAR (New Courses in BOLD)

ENGLISH

- AP English Language & Comp
- AP Seminar
- IB English A Lang. & Lit. SL, HL
- IB English A Literature SL, HL
- IB English B SL, HL

WORLD LANGUAGES

- IB Chinese A Lang. & Lit. SL, HL
- IB Chinese B SL, HL
- IB French ab initio SL
- IB French A Lang. & Lit. SL
- IB French B SL, HL
- IB Japanese A Lang. & Lit. SL, HL
- IB Korean A Literature SL, HL
- IB Spanish ab initio SL
- IB Spanish A Lang. & Lit. SL, HL
- IB Spanish B SL, HL
- IB Thai A Lang. & Lit. SL, HL
- IB School Supported Self Taught Language SL

SOCIAL STUDIES

- AP Comparative Govt & Politics
- AP Human Geography
- AP Macroeconomics
- AP Microeconomics
- AP US History
- IB Business Management SL, HL
- IB Economics SL, HL
- IB Geography SL, HL
- IB History SL
- IB History of the Americas HL
- IB Psychology SL, HL
- IB Theory of Knowledge

SCIENCE

- AP Biology
- AP Environmental Science
- AP Physics 1
- AP Physics 2
- **AP Physics C: Mechanics (online)**
- IB Biology SL, HL
- IB Chemistry SL, HL
- IB Environmental Systems & Societies SL, HL
- IB Physics SL, HL
- IB Sports, Exercise & Health Science SL, HL

MATHEMATICS

- AP Pre-Calculus
- AP Calculus AB
- AP Calculus BC
- AP Statistics
- IB Math Analysis (AA) SL, HL
- IB Math Applications (AI) SL, HL
- **Multivariable Calculus**

FINE & PERFORMING ARTS

- **AP 2D Art & Design**
- IB Dance SL, HL
- IB Film HL
- IB Music SL, HL
- IB Theatre HL
- IB Visual Arts SL, HL

DESIGN & TECHNOLOGY

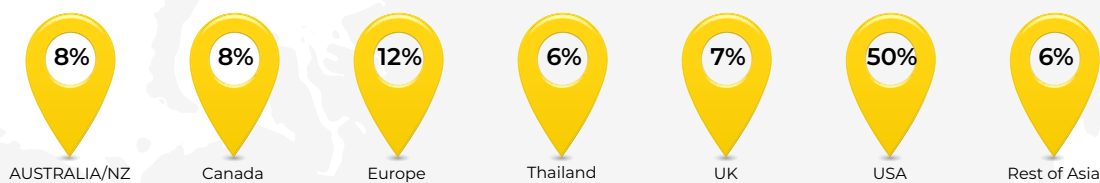
- **AP Computer Science A**
- AP Computer Science Principles
- IB Design Technology SL, HL

OTHER

- **AP Research**

International School Bangkok partners with the Global Online Academy (GOA) to provide additional academic opportunities through online courses. For more information, please visit www.globalonlineacademy.org.

Destinations Class of 2025



*3% Gap year, military service, work

MATRICULATIONS, CLASSES OF 2021-2025

Names in ***bold italics*** represent a Class of 2025 matriculation

AUSTRALIA

Griffith University
Monash University
 Royal Melbourne Institute of Technology
The University of Sydney
 The University of Western Australia
University of Melbourne
University of New South Wales
 University of Technology, Sydney

BELGIUM

Free University of Brussels
Katholieke Universiteit Leuven

CANADA

Brock University
 Carleton University
Simon Fraser University
 McGill University
 McMaster University
 OCAD University
 Queen's University
The University of British Columbia - Okanagan
The University of British Columbia
 University of Alberta
University of Calgary
 University of Guelph
 University of Ottawa
University of Toronto
 University of Victoria
 University of York
Western University
 York University

CHINA

NYU Shanghai
 Shanghai Jiao Tong University
 University of Michigan - Shanghai Jiao Tong University - Joint Institute

DENMARK

Aalborg University

FRANCE

ESSEC Business School

GERMANY

Constructor University
EU Business School - Munich
 Würzburg-Schweinfurt
 University of Applied Sciences

HONG KONG SAR

Hong Kong Baptist University
 The Education University of Hong Kong
 The Hong Kong University of Science and Technology
The University of Hong Kong

HUNGARY

International Business School

INDIA

Christ University

IRELAND

Trinity College Dublin
University of Galway
 University of Limerick

ITALY

Bocconi University
 Nuova Accademia di Belle Arti Milano
 Università Cattolica del Sacro Cuore
 Università Degli Studi di Milano-Bicocca

JAPAN

International Christian University
 Keio University-Shonan Fujisawa Campus
 Keio University
 Kwansai Gakuin University
 Nagoya University
 Nanyang Technological University
Rikkyo University
Ritsumeikan University
 Sophia University
 Temple University, Japan Campus
 The University of Tokyo
 University of Tsukuba
 University of the Sacred Heart
Waseda University

Yamanashi Gakuin University
 Yokohama City University

MALAYSIA

Monash University, Malaysia

NETHERLANDS

Erasmus University Rotterdam
 Fontys University of Applied Sciences
 Hotel School, The Hague
 Maastricht University
Technical University of Eindhoven
 University College Utrecht
 University of Amsterdam
University of Groningen
 Vrije Universiteit Amsterdam
 Wageningen University
 Zuyd University of Applied Sciences

NEW ZEALAND

Auckland University of Technology
 University of Otago

PHILIPPINES

University of the Philippines

POLAND

Wroclaw Medical University

QATAR

Georgetown University Qatar

SINGAPORE

National University of Singapore
 SIM Global Education
 Singapore Management University

SOUTH KOREA

Chung-Ang University
 Gachon University
 Korea University
 Seoul National University

SPAIN

IE University - Madrid Campus
IE University - Segovia Campus
 Instituto Químico de Sarria
Universidad Europea de Madrid
 University of Navarra

SWITZERLAND

Culinary Arts Academy Switzerland
 EHL Swiss School of Tourism and Hospitality
 Glion Institute of Higher Education
 Les Roches - Switzerland

THAILAND

Thammasat University
Chulalongkorn University
 Chulabhorn Royal Academy
Kasetsart University
King Mongkut's Institute of Technology Ladkrabang
 Mahidol University
 Silpakorn University
 Srinakharinwirot University

UNITED KINGDOM

BIMM University
 Bangor University
 Bristol, University of the West of England
 Cardiff University
 Condé Nast College of Fashion & Design
 Durham University
 Imperial College London
 King's College London
 Kingston University
 Liverpool Institute for Performing Arts
Liverpool John Moores University
 London College
 London Film Academy
 London School of Economics and Political Science
London South Bank University
 Loughborough University
 Norwich University of the Arts
 Queen Mary University of London
University College London
 University of Aberdeen
University of Bath
 University of Bristol

University of Exeter
 University of Glasgow
 University of Leeds
 University of Manchester
University of Portsmouth
University of Sheffield
 University of St Andrews
 University of Stirling
University of Warwick
 University of Waterloo
University of the Arts London

UNITED STATES

Arizona State University
 Babson College
Barnard College
 Baylor University
Bentley University
 Berklee College of Music
 Bethany Lutheran College
Boston College
 Boston Conservatory at Berklee
Boston University
 Bowdoin College
 Brigham Young University
Brown University
 Bryant University
 California Lutheran University
 California Polytechnic State University-San Luis Obispo
 Calvin University
 Carleton College
 Carnegie Mellon University
 Case Western Reserve University
 Catholic University of America
 Chapman University
 Christopher Newport University
 Clark University
Clemson University
 Colorado School of Mines
 Colorado State University
 Columbia University
 Connecticut College
Cornell University
 Dartmouth College
 Denison University
 DigiPen Institute of Technology
 Duke University
Elon University
Embry-Riddle Aeronautical University-Daytona Beach
 Emerson College
 Emory University
 Fashion Institute of Technology
 Florida SouthWestern State College
Fordham University
Franklin W Olin College of Engineering
 George Mason University
 George Washington University
 Georgia Institute of Technology
 Gonzaga University
 Hamilton College
 Haverford College
 Hope College
 Howard Community College
 Howard University
 Indiana University-Indianapolis
 James Madison University
 Knox College
 LIM College
 Long Island University
 Louisiana Tech University
 Michigan State University
 Middlebury College
 Mount Holyoke College
 New Mexico Military Institute
New York University
 North Carolina State University
Northeastern University
 Northwestern University
 Old Dominion University
 Pennsylvania State University-Harrisburg
Pennsylvania State University-Main Campus
Pepperdine University
 Pitzer College
 Pratt Institute
Purdue University
Rice University
 Ringling College of Art and Design
 Roanoke College

Rochester Institute of Technology
 Rose-Hulman Institute of Technology
 Rutgers University-New Brunswick
 SUNY Buffalo State
 San Diego State University
 San Francisco State University
 Santa Barbara City College
 Santa Clara University
 Sarah Lawrence College
 Savannah College of Art and Design
School of the Art Institute of Chicago
 Scripps College
 Shoreline Community College
 Smith College
Southern Utah University
 Spelman College
Stanford University
 Suffolk University
Syracuse University
 Tacoma Community College
Texas A & M University-College Station
 Texas State University
 Texas Tech University
The New School
Trinity College
Tufts University
United States Merchant Marine Academy
 United States Military Academy
United States Naval Academy
 University of Alaska Anchorage
 University of Arizona
University of California-Berkeley
 University of California-Davis
University of California-Irvine
University of California-Los Angeles
 University of California-Riverside
University of California-San Diego
University of California-Santa Barbara
 University of Chicago
 University of Cincinnati
 University of Colorado Boulder
 University of Delaware
University of Georgia
 University of Hawaii at Manoa
 University of Illinois Chicago
University of Illinois Urbana-Champaign
 University of La Verne
 University of Maryland-Baltimore County
 University of Maryland-College Park
 University of Massachusetts-Amherst
 University of Massachusetts-Lowell
 University of Michigan-Ann Arbor
 University of Michigan-Dearborn
 University of Michigan-Flint
 University of Minnesota-Duluth
 University of Montana
 University of Minnesota-Twin Cities
 University of North Carolina-Wilmington
 University of North Georgia
 University of Pennsylvania
 University of Rochester
 University of San Diego
 University of San Francisco
 University of South Carolina-Columbia
University of Southern California
University of Texas at Austin
 University of Tulsa
University of Vermont
University of Virginia
University of Washington-Seattle
University of Wisconsin-Madison
 Utah State University
 Virginia Commonwealth University
Virginia Polytechnic Institute and State University
Virginia State University
Washington State University
 Washington University in St Louis
 Washington and Lee University
Widener University
William & Mary
Worcester Polytechnic Institute