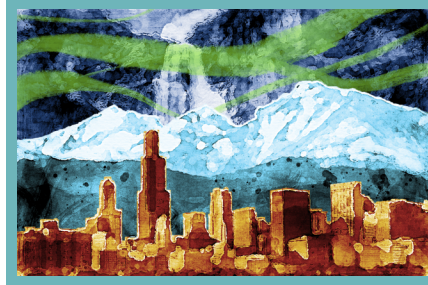


We are very excited to begin our new social studies Inquiry: **Our Changing Landscape**.

Our Changing Landscape

Our relationship to the physical world around us begins with our own geographical location and the physical features of that location. In this Inquiry, students explore access to and dependency on natural resources, how and why we modify the landscape, and the impacts that modifications can have on land, water, and living things. Then, they consider how to take action in their community in response to the changing landscape.



Over the course of each Inquiry, students work toward addressing a big, overarching question called an Inquiry Question. The Inquiry Question that will guide students forward in this Inquiry is: **How can we respond to our changing landscape?** In order to explore this big Inquiry Question, students will be answering a series of smaller questions (called Essential Questions) along the way. These include:

- What do sources tell us about the landscape?
- How do humans depend on the environment?
- What happens when humans modify the landscape?
- How do people work to solve problems in the landscape?

We are excited to dive into this social studies content together! Thank you for your support.

