

Our Mission Statement

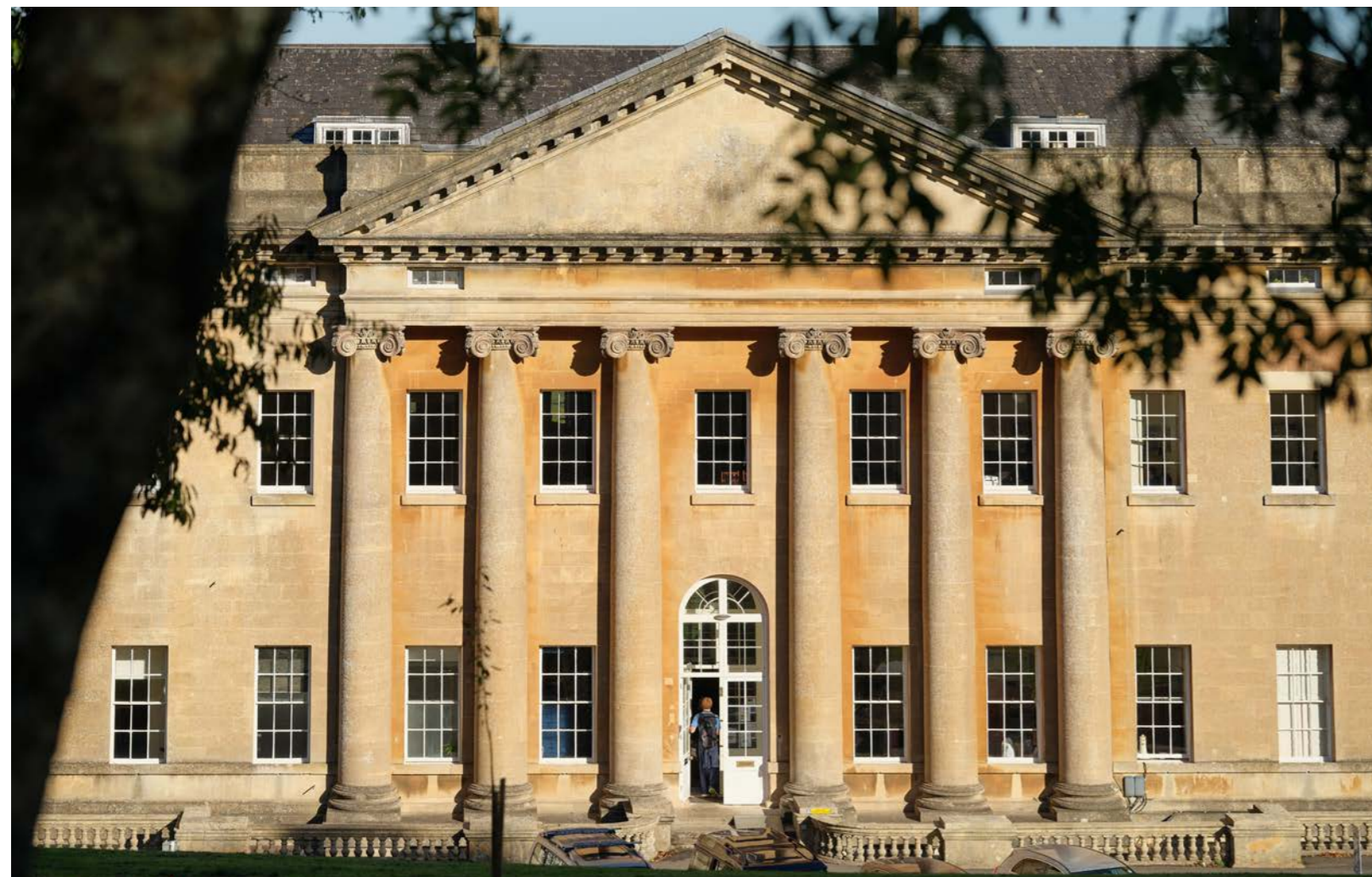
To steward a thriving family of communities with love for the young people they serve at their heart: communities which cultivate creativity, foster integrity, and transform lives.

Our Values

Courage ▪ Generosity ▪ Curiosity

Contents

5	WELCOME	20	SPORT
6	OUR COMMUNITY	22	CO-CURRICULAR
8	ACADEMIC	24	BOARDING
12	MUSIC	26	BAINES HOUSE
14	DRAMA	28	SIXTH FORM
16	DESIGN & TECHNOLOGY	30	ADMISSIONS
18	VISUAL ARTS		



Welcome

Prior Park students have a whole host of opportunities. They are educated in a beautiful environment, in a school which is not afraid to talk about the love we have for them. Prior Park students feel safe and happy, and it is precisely because of this that they are so successful. We are a community that exists to serve. We serve our young people by giving them a high-quality education both inside and outside of the classroom. Teachers here are subject specialists, but they are also committed to helping our young people grow in other arenas. We offer a wide range of activities to give our young people a chance to find out what excites them, and their teachers delight in engaging with them outside of the classroom, building solid, supportive, relationships.

Prior Park looks to challenge each of its students. We ask them to think about the difference they can make to their world, and to look to serve others. We are a school where creativity is valued. Our students can, and do, find a creative spark across the wide range of subjects we offer. We challenge our students to be the best, and truest, versions of themselves, and we provide this challenge in a caring and supportive way. We know that we are a school which transforms the life of every student who comes here. They emerge from a Prior Park education knowing who they want to be and how they can make a difference to our world. They emerge with a character that is well rounded, and an academic profile that allows them to make their next step in life with confidence – whatever that step might be.

At Prior Park every child is known, valued, and cared for. Prior Park is a diverse community where each child finds their way towards a fulfilled and successful life. I know it to be an open, friendly, and caring place where your family will feel at ease and your children will thrive. Do come and visit us. Come and meet the young people at Prior. Ask them what they think of our school. They will show you, more clearly than any website, league table, or Headmaster's introduction, that this is a place they are proud to be a part of. It is a place which lives our Mission, and our Values of Curiosity, Generosity, and Courage, every single day. It is, put simply, an extraordinary school.

A handwritten signature in black ink, reading "Ben Horan". The signature is fluid and cursive, with a long, sweeping underline.



Ben Horan
Headmaster, Prior Park College

Our Community

Prior Park's community is made up from approximately 410 day and 140 boarding students. Set in 57 stunning acres overlooking the UNESCO World Heritage City of Bath, the College offers an exceptional environment for students to study, play, and live.

Dedicated staff and outstanding facilities help to develop as fully as possible the academic and other talents of each boy and girl. We encourage students to embrace all the opportunities on offer at Prior - acting and singing in first class productions, competing for their team, producing impressive works of art and design, leading our charities work, and taking a full role in House activities.

All pupils are members of a House, and the House System generates a wonderful sense of community, provides easy and appropriate channels of communication, and instils positive values. They are also fun, with a huge variety of House-led activities happening throughout the academic year. Our year 7 and 8 Houses are co-educational whilst years 9 - 13 are single sex. Each House is run by a Housemaster or Housemistress with a team of tutors, and all offer encouragement and support to each student within their care.

The College prides itself on its pastoral care and we aim to provide a safe, stimulating and positive environment. We provide a range of information and support for pupils and we address relevant current issues that may be a cause of anxiety. Understanding others, learning to express oneself, tolerance, and developing friendships with a wide range of people are vital. We are very much a community that looks out for each other and after each other.

The College has an on-site Health and Wellbeing Centre which provides proactive and holistic care for our students' physical, mental, and emotional wellbeing. An experienced independent Counsellor works alongside our medical team and House staff to support students' and can provide one-to-one sessions if requested.

Prior Park College is a Christian school in the Catholic tradition and our beautiful Chapel, Our Lady of the Snows, is the focus of our spiritual life. It is the venue for weekly all-school assemblies, musical performances, religious prayer and services. We welcome pupils from all faith backgrounds and those with no faith into our inclusive community.





HAPPY
→ and ←
Successful,
-ful,
in
that
order

Academic

At Prior Park, we not only see our students for who they are, we see them for all they can become.

Our curriculum is unashamedly broad so we can help every child find and pursue their unique gifts, talents and passions, from Physics to Photography, Maths to Mandarin. It is also expertly balanced to make sure our students get what they need to access the next level of their education pathway. This, together with our expert teachers and exceptionally caring tutors, means young people at Prior are happy and successful, in that order.

At GCSE, Prior students enjoy a truly individualised programme. English and Mathematics are required core examination subjects, and students select a further six optional subjects, each a free choice from a menu of nearly thirty disciplines. This approach helps our young people pursue their own interests and passions and, importantly, play to their strengths. As such, our results are exceptional, with particularly outstanding 'value-added' scores at GCSE; proof that, year after year, we draw out the very best from our students.

At Sixth Form, most students take three A Level subjects with the most able choosing a fourth and the intellectually curious choosing to study for the Extended Project Qualification (EPQ). Nearly all Prior Park students go on to university at their first-choice institution, including many to Oxford, Cambridge, Russell Group Universities and medical schools. We also encourage students to consider newer tertiary education options – a number of our recent Sixth Formers have been fortunate to gain places on highly competitive degree-apprenticeship schemes offered by Jaguar Land Rover, the MOD, BAE Systems, Dyson, KPMG, and other prestigious firms.

At Prior, we make sure our students are prepared for their future. We invest heavily in digital; all students use a school-provided Personal Learning Device in lessons throughout the day





and at home. These high-spec laptops let students use industry-standard collaboration technology, like Teams, OneNote and 365 to manage lessons, access notes, complete work and get help from their teachers. Lesson materials and homework sync effortlessly between students and teachers and let our young people focus on questioning, not copying. Our classrooms are adaptive, and we exploit technology in ways that will enable our students to make the best use of it throughout their learning journey.

Our unique Prior4Life programme in Form 4 and the Sixth Form furthers that broad outlook by exposing students to international politics, finance, ethics, world religions, charity, enterprise, careers, philosophy and much more. It ensures that our students have the life skills and 'hinterland' to excel in whatever comes next.

Prior Park students can enjoy a programme of educational trips. Many subjects - Geography, Biology, History, MFL, Classics, for example - offer regular trips so that students can complete work for their classes in the richest possible environments.

At Prior Park, simply put, our exceptional teaching, our staff who know every student, and our broad academic provision allow every learner to find their individual gifts, talents and passions, and make the very best of them.

This is teaching at its best: inspiring young people and cultivating their thirst for learning.
Parent





Music

Music is placed at the heart of Prior Park, with the department situated in the main Mansion building.

The College is fortunate to have several wonderful onsite performance spaces, such as the John Wood Chapel, Theatre, and Chapel, and pupils have access to top quality resources, such as our Fazioli Concert Grand piano, the Copley pipe organ, and our music technology suites.

All students at Prior study music in Year's 7 and 8 and receive a term of funded group instrumental lessons per year, as part of our 'Learn in a Term' scheme. Students can then choose Music at GCSE, and Music and Music Technology at A Level.

Private instrumental lessons are available on over twenty-five different instruments. We also host termly examination sessions for the ABRSM.

We facilitate a huge range of ensembles, including Orchestra, chamber music groups, and Jazz Band. Singing plays an important part in College life, from singing each week at whole-school assembly, to the four different school choirs. Large-scale choral works are also performed twice annually, with a choir of over 100 students, staff and families, alongside professional musicians.

Performances number around sixty per academic year, ranging from Band Night to our more formal events. The Grand Summer Concert provides Upper Sixth Form students the opportunity to perform major works, including concerti, with professional players.

In the Lent term, the music and drama departments combine talents for the School Musical, recent productions include, The Addams Family, Grease, and Beauty and the Beast.

Recent performances outside of Prior have included Bath Abbey, Clifton and Salisbury Cathedrals, and the Sagrada Familia during a tour of Barcelona.

The Music department also facilitates regular masterclasses, such as a Musical Theatre Singing Masterclass with Gabriel Vick, an alumnus of Prior who starred in the West End hit show 'Mrs Doubtfire'.



Drama

The Drama department is extremely lucky to have professional facilities and resources, including the well-equipped, 160-seat Julian Slade Theatre, a spacious dance studio, and an additional seminar room. With two or three major productions a year, as well as other smaller scale performances, there are plenty of opportunities for students to develop their passion for drama or to try their hand at something new, such as stage management, costume design, writing, or technical crew.

Drama is offered to all students at Prior Park in Years 6-9 and is also taught at both GCSE and A Level. It is an all-inclusive subject that allows students to express themselves, think on their feet and work collaboratively. By learning to cooperate, compromise, and contribute to a shared creative vision, students learn important skills such as negotiation and problem-solving, which are crucial for success, whatever their chosen career path.

All GCSE and A Level students will be taken to see some live theatre as part of their courses. In addition, there are opportunities for all students to attend talks or workshops given by guest speakers, including former pupils, to discuss their experience as professionals within the Performing Arts industry.

The department is proud of the successes of its alumni – students have gone on to study at a wide variety of universities, colleges and drama schools including Manchester University, Royal Holloway, LAMDA, The Actors Studio in NYC, and Bristol Old Vic Theatre School.

The array of talent at the College never ceases to amaze, and the boundless energy and endless enthusiasm shown by students at Prior Park is both an inspiration and a source of great pride.



I just had to write to congratulate you on another truly magnificent production – we were totally blown away by what we experienced. Everything was just SO professional.





Design & Technology

Our award-winning Design & Technology department is highly respected and has facilities on a par with neighbouring universities and many industrial workplaces.

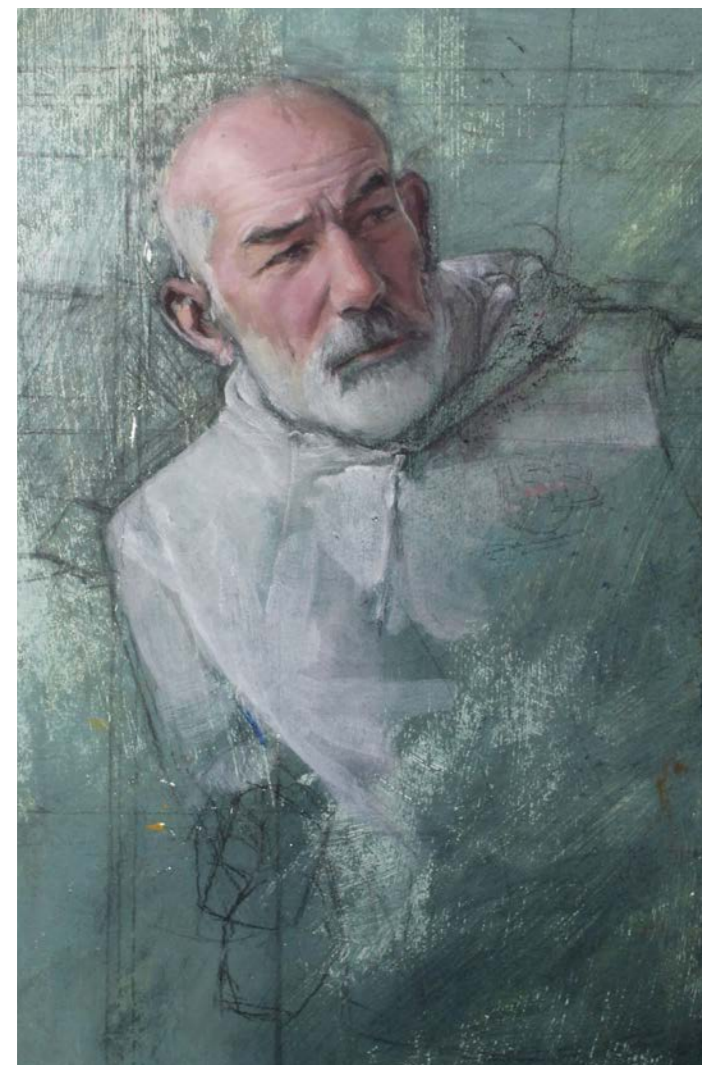
The school has invested heavily in the latest 3D printing and laser cutting technologies, helping the department to be recognised as a Centre of Excellence. With its expert teaching staff, students can access the very latest of what the creative world has to offer - from product, interior, landscape, and graphic design, through to professional metal fabrication and engineering.

Design & Technology is delivered across all Key Stage 3 years and is a popular subject at GCSE and A Level, with Sixth Form students enjoying their own bespoke Product Design studio. The department currently follows the Edexcel Pearson Design and Technology course at GCSE and a 3D Product Design course at A Level. Exam results are consistently some of the best in the country.

For many years, Prior Park students have been awarded a prestigious Arkwright Engineering Scholarship. Alongside strong A Level results, this has helped them to gain entry to top engineering universities across the country.

As well as timetabled lessons, the department also has a vibrant co-curricular offering, ranging from metal and woodwork clubs through to an extensive Computer Aided Design program.





Visual Arts

Our Visual Arts faculty comprises of three fascinating subjects; Fine Art, Photography, and Textile Design. Its location in St Peter's provides students with a stimulating, light and airy space for them to tap into their creativity.

These fantastic facilities, combined with the skill set of our talented teaching staff, allow students the opportunity to become complete artists and designers. From textile designers through to the range of artists who work within a plethora of different mediums, from painting and printmaking to sculpture, installation, and digital media, our students are able to explore, wherever their creative journey takes them.

Our programme of annual exhibitions celebrates the hard work and talent of our students. The achievements of A Level, GCSE and Key Stage Three students are showcased in the gallery spaces, studios, and throughout the College.





Sport

Our outstanding onsite facilities include a state-of-the-art Sports Centre complete with an impressive fitness suite, indoor swimming pool, all-weather pitch, rugby and cricket pitches, indoor and outdoor tennis and netball courts.

Our specialised coaches encourage our pupils to achieve the highest standards regardless of ability. We put together several teams so that everyone has an opportunity to compete, however we recognise that team sport is 'not for everyone' and ensure that other options are available for those students.

The school has a strong fixture list, and we compete with the best sporting schools. The College is represented at various national and inter-schools tournaments throughout the year, including hockey, netball, tennis, and Rosslyn Park Rugby Sevens. We have pupils that compete at county, regional, and international level.

For our elite sportsmen and women, our close proximity to Bath University is a tremendous bonus, with students regularly using training facilities and coaching there. Prior Park supports these students in pursuit of their goals and works with them individually to accommodate their sporting schedules, whilst making sure the demands of school life are also met.

A wide range of additional sports, such as basketball, football, badminton, cross-country, golf, sailing, and volleyball are also on offer at the College through extra-curricular activities and Saturday Active.





Co-Curricular

The objective of our co-curricular programme is that it is inclusive, provides opportunity, develops talents, is enriching, provides a global education, offers access to outdoor education, encourages personal and physical development, leadership, and most importantly, is fun!

Our Activities and Clubs programmes feature activities ranging from Astronomy to Chess, Creative Writing to Metalwork. Students are required to choose one activity per week and the choice can vary each term. If a student has an external activity that they wish to continue with, this can also be included within the programme.

The Duke of Edinburgh's Award Scheme is a popular and flourishing option for many students from Form 4 upwards. The College offers participation at Bronze, Silver and Gold levels, with each level consisting of four sections: skill, service, physical recreation and expeditions.

Our CCF covers both Army and Navy sections and allows boys and girls to develop leadership skills. Cadets learn a broad variety of skills that include training in First Aid, Skill at Arms, and Weapon Handling. There are also opportunities to sail or pilot the flight simulator. Some students opt for both CCF and DofE!

Saturday Active is a programme of courses that take place every Saturday morning during term time. There are a variety of courses to choose from during the year, including archery, craft club, golf, and yoga. We expect our boarders to take part but for day pupils the courses are optional. Most courses are free however some can incur a small cost.

With such a wide variety of activities on offer, we are confident of providing something for everyone to enjoy and develop.

Boarding

Boarding is at the heart of the College. Our full, weekly and flexi boarders live in the family atmosphere within the two boarding houses, St Paul's and St Mary's.

St Paul's is home to approximately 75 boys, whilst St Mary's is home to approximately 65 girls. Each boarding house has its own a dedicated live-in House Parent and a team of residential tutors to ensure the pastoral care and organisation essential to the community and to every individual.

Our boarders are made up of British and international students from a broad range of countries. For our British boarders, and indeed our day students, the benefits of making friends amongst our international community are extraordinary. It broadens horizons and cultural knowledge which, in a global marketplace, can be very advantageous.

During the school day, all boarders are assigned a Day House. They leave their boarding home after breakfast and return at the end of the school day. This 'hotel' style boarding ensures our boarders are fully integrated with our day students throughout each school day.

Boarding life at Prior Park is happy, vibrant and dynamic. A full weekend activity programme includes Saturday Active, cinema and theatre outings, sports fixtures, theme park outings, ten-pin bowling, shopping trips, amongst other fun pursuits. Boarders also benefit from being able to access the on-site facilities after hours, including our Sports Centre and Fitness Suite.

Bath as a location offers a diverse range of sightseeing and leisure attractions and has a year-round programme of festivals and sporting events. The city is easily accessible via mainline rail and major road networks, with Bristol International Airport just 20 miles away.

Boarding at Prior is a life enhancing experience, where students benefit from being able to develop strong friendships and independence in a home-from-home environment. Boarders joining the College will be supported, encouraged, challenged, and very much welcomed.

*Everyone is so supportive and so friendly.
The House staff and other boarders feel like
family. Prior is, for sure, a home to me.*

Boarder





Baines House

Baines House has been set up to smooth the transition from junior to senior school. It is the school time 'home' for our Year 7 students.

Baines has its own Housemaster and a team of tutors who provide daily support to their tutees, help them understand much of all that is new, and seek to remove any anxiety a new student may have.

A modern purpose-built house provides the tangible meeting place for our Year 7 students. It is located close to the centre of the main teaching block, so the pupils are well placed, and has its own outdoor play area. The building offers a large common room stocked with books and games for break times, a piano, homework area, kitchen area, changing and locker rooms. This space is exclusive to Baines students, much to their delight.

Baines is a happy place where students have the time to absorb all the new facets of College life. The House runs a number of activities and events throughout the year, including fundraising for the school charities, a residential trip, music and drama performances, and the ever-popular House Music competition. Baines students are also encouraged to take part in at least one co-curricular activity per week, ranging from metal club to orchestra.

Baines House is one where all its students feel at home. It is a fun and kind environment, a place where friendships are made and nurtured, and where Prior's younger students are able to grow spiritually, emotionally and academically, within a safe and inclusive environment.





Sixth Form

The Sixth Form is a lively, socially enjoyable and intellectually stimulating time in a pupil's school career.

Our Sixth Form students have their own designated area within the Mansion, providing a perfect place for students to work and socialise. The Sixth Form Centre has five spaces: a quiet study area, kitchen, common room, multifunctional classroom, and social study area.

Socialising, feeling part of our community and being happy is conducive to academic success, and there are many events throughout the year, including BBQs, restaurant outings, fancy dress parties, and fun team building events to encourage this. The Upper Sixth finish off their time at Prior in style with a Leavers' Ball.

The majority of our Sixth Form leavers go on to their first-choice university or higher education institution. Our Sixth Form team prides itself on the support given to each student through the university admissions process. All students have access to the Unifrog software which helps to highlight options for them. They also have individual meetings to discuss their choices and to get advice on finance, accommodation, and student life in general. Those interested in applying to Oxbridge meet weekly to discuss the specific requirements, take part in practice interviews, and prepare for admissions tests. Students who wish to apply for an apprenticeship or take a gap year can meet with our Careers Advisor and are welcomed at our annual Gap Fair.

Prior Park offers many enrichment and co-curricular opportunities including sport, debating, community service, creative options, House activities, and performances, and Sixth Form students are encouraged to make the most of, and take a lead on many of these.

Prior 4 Life is the part of the curriculum that encourages students to learn practical and enriching skills that helps prepare them for life, including DIY, interview skills, first aid, basic cookery, managing finances.

One of our core aims is to enable our Leavers to be confident, capable, compassionate and independent-minded, and our Sixth Form team wholeheartedly supports our students to this end.



CREATING your Future

Admissions

As Registrar, it is my pleasure to work with parents in ensuring the Admissions process is as smooth and transparent as possible. Initial enquiries are by phone or email, at which time we will discuss your child's interests, current schooling and year of entry to the College.

Prospective families are encouraged to attend any of our Open Events or, if these dates are not convenient, arrange a private visit to the College on a normal working day. Applicants should complete the Registration Form and return it to the Admissions department with a non-refundable registration fee.

Entrance and scholarship examinations are obligatory and we will contact your child's current school for a report. All candidates are interviewed by the Headmaster or Deputy Heads before a final decision is reached and an offer of a place is communicated. Parents should return the Acceptance Form and deposit before the deadline date to ensure their child a place.

Our aim is to admit pupils with academic or other qualities, who will gain the most benefit from the opportunities on offer at Prior Park, whilst maintaining a balance across the school - boys to girls, day to boarding.

Prior Park offers a range of scholarships and exhibitions to talented pupils at 11+, 13+ and 16+. Applicant's parents are encouraged to consult the Head of their primary, preparatory or

senior school about the suitability of their son or daughter for such an award. Additional supporting reports from teachers or coaches are most helpful.

So that we can broaden access to our schools, the College is able to offer financial support to eligible families through Bursary Awards. Means-tested bursaries may be granted in addition to scholarships.

Further information regarding our Admissions Policy, Key Dates and Application Process is available on our website priorparkcollege.com/admissions or you can contact our department by phone: +44 (0)1225 835 353 and email: admissions.ppc@priorparkschools.com

We look forward to hearing from you.



Mrs Vicki Quinn
Registrar



Both of our children have thrived in their own individual ways through the encouragement and challenge that the school has provided. We could not have wished for a better start in life for them.

College Parent



Prior Park College

ROOM TO BE ME

Ralph Allen Drive, Bath BA2 5AH

Phone: +44 (0)1225 835 353

Email: admissions.ppc@priorparkschools.com

priorparkcollege.com

11-18 years, Day and Boarding, Independent School.