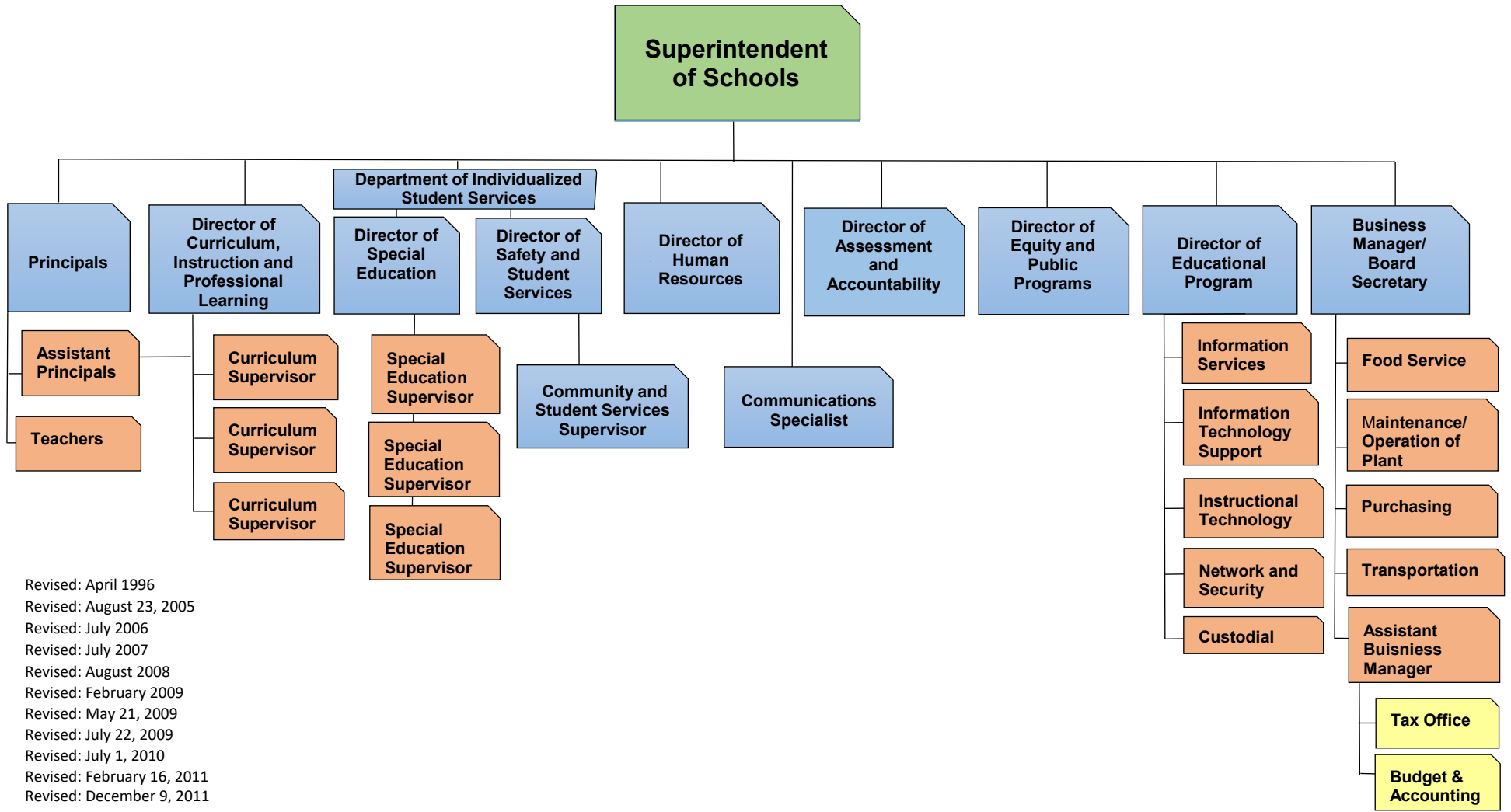


*Administrative Organization*

The focus of the organizational framework in the District shall be upon the learner and upon those who most directly affect the learning environment and shall provide the blueprint for the design of the administrative structure in the District.

The organizational chart shows lines of primary responsibility. As such, it is designed to be called upon when needed to clarify relationships in case some questions arise. Missing are the many crisscrossing lines of secondary responsibility and of communication and cooperation which characterize our schools.



- Revised: April 1996
- Revised: August 23, 2005
- Revised: July 2006
- Revised: July 2007
- Revised: August 2008
- Revised: February 2009
- Revised: May 21, 2009
- Revised: July 22, 2009
- Revised: July 1, 2010
- Revised: February 16, 2011
- Revised: December 9, 2011
- Revised: May 30, 2012
- Revised: May 20, 2013
- Revised: November 12, 2015
- Revised: July 1, 2017
- Revised: July 2019
- Revised: September 3, 2019
- Revised: August 31, 2021
- Revised: July 11, 2023
- Revised: September 5, 2023
- Revised: September 2, 2025