

AI POSITION STATEMENT AND USE GUIDELINES

2025-2026 DRAFT

Artificial Intelligence is fundamentally reshaping our world, offering access to modern transformational tools much like the printing press and the wheel did in their time, opening new possibilities for how we learn, create, and solve problems. As society evolves, so must education, ensuring it nurtures not just the acquisition of knowledge, but the human qualities that inspire it: curiosity, critical thinking, empathy, and ethical decision-making.

As experts in child development and learning, educators must lead the way forward by staying rooted in the belief that technology is a powerful tool that should enhance, not replace, the meaningful human relationships that are at the heart of learning. It is incumbent upon us to design educational experiences that leverage AI's potential while continuing to prioritize personal connection and relationships. In doing so, we will help students develop modern essential competencies and grow into innovative, ethical, and informed citizens, ready to thrive in a rapidly changing technological landscape all while maintaining valuable student-teacher relationships.

Together with creative and experienced faculty, engaged parents, and our curious community of learners, we will lean intentionally into the mission of Good Shepherd Episcopal School as we guide students in the thoughtful exploration of these tools. We understand that as AI use evolves, societal norms and best practices in regards to children will continue to change, and we are committed to remain flexible in our position. We are energized by the opportunity to learn alongside experts, teachers, and students, while leveraging AI to help students of all ages:

DEVELOP CRITICAL THINKING

We cultivate a mindset of discernment. AI use encourages students to analyze information critically, learn from their mistakes, and assess credibility, thus equipping them to navigate complex ideas with both openness and healthy skepticism

FOSTER CURIOSITY

We inspire a lifelong love of learning by using AI to ignite curiosity, encouraging students to explore, question, and discover the world around them.

PROMOTE SELF REGULATION

We guide students in developing age appropriate impulse control and adopting behaviors that support sustained learning and academic success. Self-regulation is essential for becoming an independent and effective learner.

ENHANCE EMPATHY

We leverage AI to foster an inclusive environment, helping students understand diverse perspectives and experiences. This cultivates empathy by allowing every student, regardless of background or ability, to feel valued, excel, and find their place in our community.



Early Childhood Use Guidelines

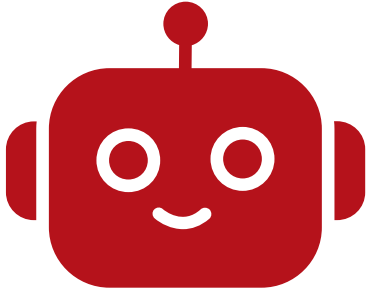
AI use will be introduced in a whole-group setting, guided by a teacher, and have a focus on exposure, exploration, and ethical use. Students will not use AI independently, but will benefit from shared experiences that promote discussion and learning.

The goal is to build a general familiarity with AI at a young age while supporting language development, creative thinking, and concept formation. Clear guidelines and common language will be used across the division to create consistent expectations.

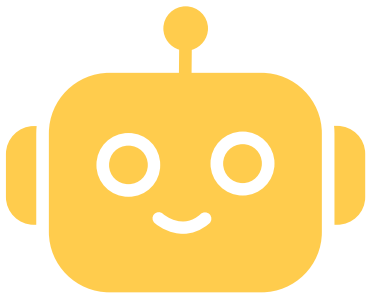
AI Will Be Used To:

- ◆ **Spark curiosity and introduce new ideas**
- ◆ **Develop oral language and sentence structure**
- ◆ **Brainstorm ideas and generate images**
- ◆ **Support content understanding**
- ◆ **Demonstrate learning in creative ways**
- ◆ **Explore the difference between toys and tools**
- ◆ **Build academic vocabulary**
- ◆ **Enhance descriptive language and clarity of thought**

Early Childhood AI Traffic Light



Students will participate in this activity technology free



Students might explore generative AI approved tools with teacher guidance to help with content creation



Students will participate in this activity to learn about how to use generative AI approved tools

Lower School Use Guidelines



AI use will be modeled and scaffolded in teacher-guided settings, and students will begin to independently use AI tools to support learning, inspire ideas, and explore new technologies. AI will serve as a helpful tool, not as a replacement for a student's own thinking, creativity, or effort. Students will be taught to use AI ethically, respectfully, and responsibly, and to clearly state when AI has supported their work. Clear guidelines and common language will be used across the division to create consistent expectations and students will follow all guidelines outlined in the school's Responsible Use Policy (RUP), including those specific to AI.

AI Will Be Used To:

- ◆ **Brainstorm ideas for stories and projects**
- ◆ **Ignite curiosity**
- ◆ **Deepen understanding of concepts**
- ◆ **Hear text read aloud to enhance comprehension**
- ◆ **Explore new vocabulary**
- ◆ **Generate simple visuals**
- ◆ **Enhance oral language and sentence development**

Lower School AI Traffic Light



Students will not use generative AI for this activity or project



Students are encouraged to use generative AI approved tools to assist with this activity or project



Students are expected to experiment with generative AI approved tools to further understanding of responsible use



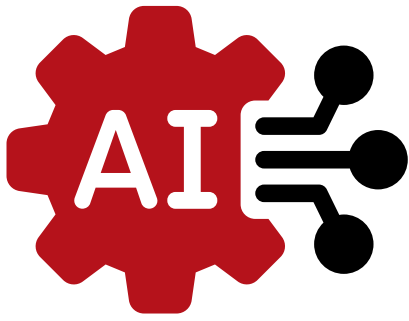
Middle School Use Guidelines

Students will engage with AI tools in thoughtful, structured ways that enhance their learning while promoting integrity, responsibility, and creativity. Teachers will guide students in appropriate use and reinforce the importance of original thought. Clear guidelines and common language will be used across the division to create consistent expectations and students will follow all guidelines outlined in the school's Responsible Use Policy (RUP), including those specific to AI.

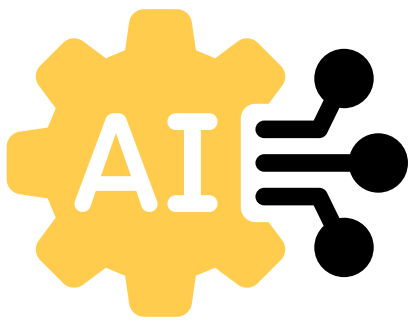
AI will be used to:

- ◆ **Brainstorm ideas and plan projects**
- ◆ **Ignite curiosity**
- ◆ **Explore new concepts, topics, and vocabulary**
- ◆ **Hear text read aloud to support comprehension**
- ◆ **Enhance written and oral language**
- ◆ **Generate images to support presentations or assignments**
- ◆ **Understand multiple perspectives, identify bias, and develop critical thinking**

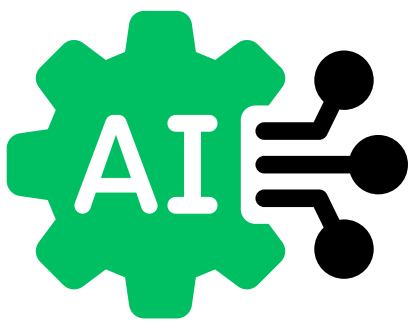
Middle School AI Traffic Light



Students will not use generative AI for this project or assignment



Students are encouraged to use generative AI approved tools for this project or assignment



Students are expected to critically engage with generative AI as the assignment

Faculty/Staff Use Guidelines



The use of AI technology in professional practice is expected and encouraged at GSES. While using AI and Generative AI tools, all employees will:

- ✓ Comply with the GSES Employee Technology Responsible Use Policy.
- ✓ Refrain from submitting GSES confidential or protected information to any open-source AI system. Confidential or protected information includes, but is not limited to, financial, medical, employee or student personal information.
- ✓ Use AI tools for reference, idea development, and/or feedback purposes, not as a replacement for original ideas or thinking. For example, AI should be used as part of a process - to craft initial drafts of emails, comments, presentations, recommendation letters, lesson plans, test questions, report card comments, etc. but not be used to create final products.
- ✓ Verify the information obtained while using AI tools for validity, accuracy, bias, and truthfulness.

**Artificial
Intelligence is
not a
substitute for
human
intelligence; it
is a tool to
amplify human
creativity and
ingenuity.**

-Fei Fei Li

How AI use connects with the GSES Mission



◆ LEARN WITH CONFIDENCE

AI exploration will be conducted using tools that have been vetted and approved by the technology department, ensuring that students can feel safe in their learning environment. By interacting with approved tools and learning to critically analyze output, potential bias, and misinformation, students will have opportunities to build confidence in making informed decisions, asking deep questions, and solving problems with clarity and conviction.

◆ SERVE WITH COMPASSION

Using AI tools will help students practice communicating in a manner that upholds dignity and maintains respect and empathy for all - especially when acknowledging and learning to identify bias. With a greater understanding of how AI can frequently generate biased and inaccurate information, students can begin to develop a clearer understanding of the world - and potentially create positive change.

◆ LEAD WITH COURAGE

Good leaders have integrity, accountability, excellent decision making abilities, and advanced communication skills. By encouraging our students to use AI tools in a responsible way, we aim to help our students develop these traits in both academic and personal settings. Responsible use includes requiring them to be transparent about when and how they use AI, teaching them to safeguard personal and private information, and showing them how to properly cite work and refrain from plagiarism.