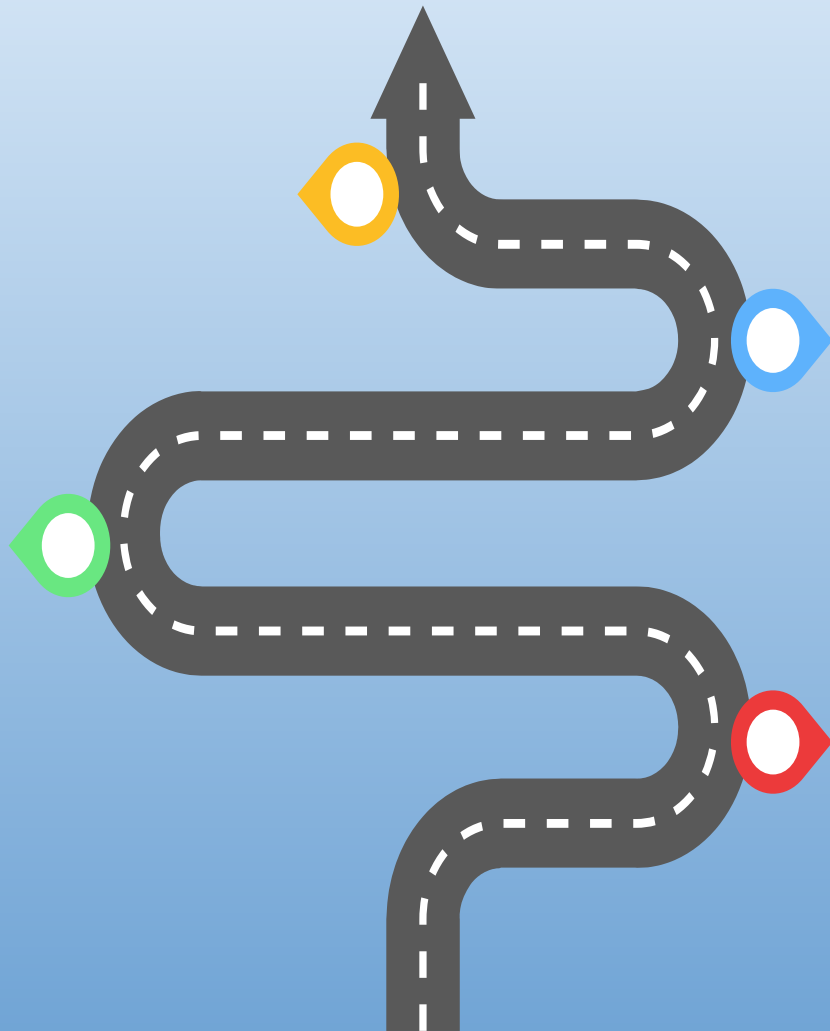




Roadmap to Mental Health Supports

2025-26 School Year





Access to Support

2025-26



Access to Support

	Prevention Tier 1	Prevention Tier 1	Prevention Tier 1	Prevention Tier 1	Prevention Tier 1	Instruction Tier 1	Instruction Tier 1	Instruction Tier 1	Instruction Tier 1	Intervention Tier 2	Intervention Tier 2	Intervention Tier 2	Intervention Tier 2 / Tier 3
	DESSA-Mini DESSA-SR	Panorama	Sandy Hook Promise-Say Something	Say Something SAVE Clubs	DCF Prevention Program	Second Step Adult SEL	Second Step Curr.	Bullying Prevention Unit	Child Protection Unit	DESSA Small Groups	PMHG (Just for Me)	CMHA: Smart Recovery	CMHA: CBITS/Bounce Back (Trauma)
4 Bucks Hill Annex (PK)						X	X		X				
5 Bucks Hill ES (CBL)	X					X	X	X		X			
6 Bunker Hill ES (BDLC)	X				Pending	X	X	X		X			
7 Chase Elementary School	X					X	X	X		X			
8 Driggs Elementary School	X					X	X	X		X			
9 Generali Elementary School	X				Pending	X	X	X		X			
10 Hopewille El School	X					X	X	X		X			
11 International School (pk-3)	X					X	X	X		X			
12 Kingsbury El School	X					X	X	X		X			
13 Maloney Magnet School	X					X	X	X		X			
14 Regan Elementary School	X					X	X	X		X			
15 Rotella Inter. Magnet School	X					X	X	X		X			
16 Sprague Elementary School	X					X	X	X		X	X		X
17 Tinker Elementary School	X				Pending	X	X	X		X			
18 Walsh Elementary School	X					X	X	X		X			
19 Washington El School	X					X	X	X		X			
20 Wilson El School (BDLC)	X				Pending	X	X	X		X			
21 Carrington School (K-8)	X		MS	MS		X	X	X		X			
22 Duggan School (K-8)	X		MS	MS	Pending	X	X	X		X	X		X
23 Gilmartin School (K-8)	X		MS	MS		X	X	X		X			
24 Reed School (K-8)	X		MS	MS	X	X	X	X		X			X
25 Wendell Cross School (K-8)	X		MS	MS		X	X	X		X	X		X

WPS Clear Path Forward...Meet the needs of ALL!

Instruction

Social-emotional learning (SEL) curriculum (K-12)

Community Partnerships

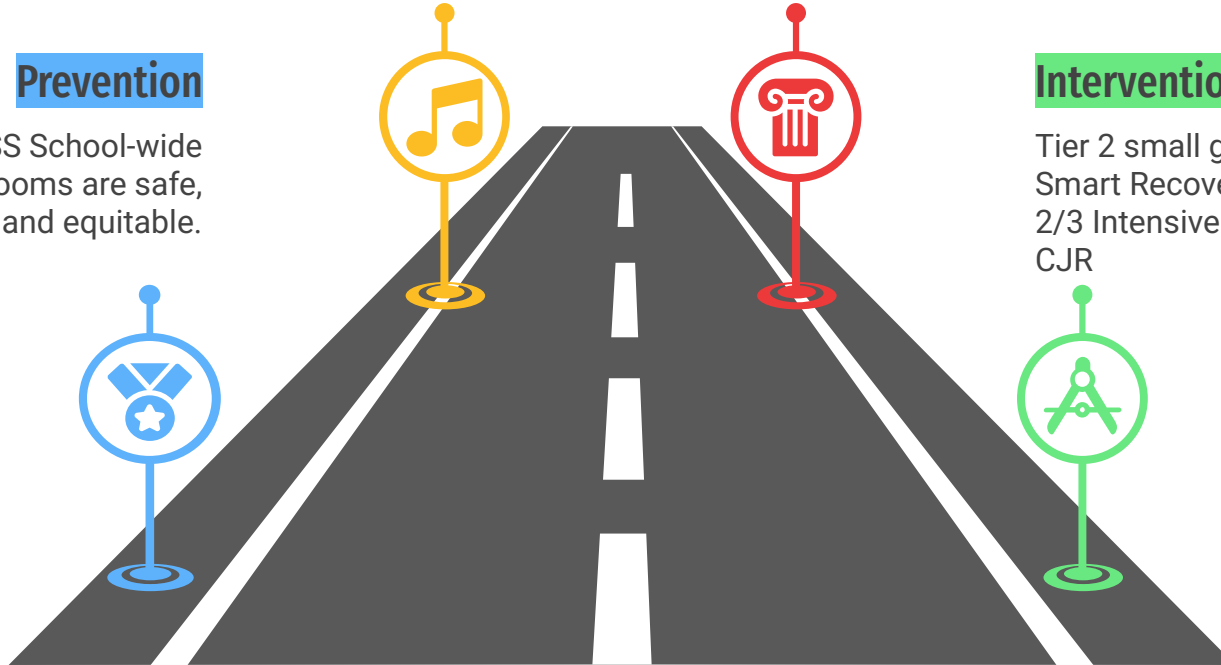
CT-Youth; CMHA; Wellmore; CITY (Crisis Team); IICAPS; Wheeler Clinic (In-home)

Prevention

Through Tier 1 MTSS School-wide Supports, classrooms are safe, learning conducive, and equitable.

Intervention

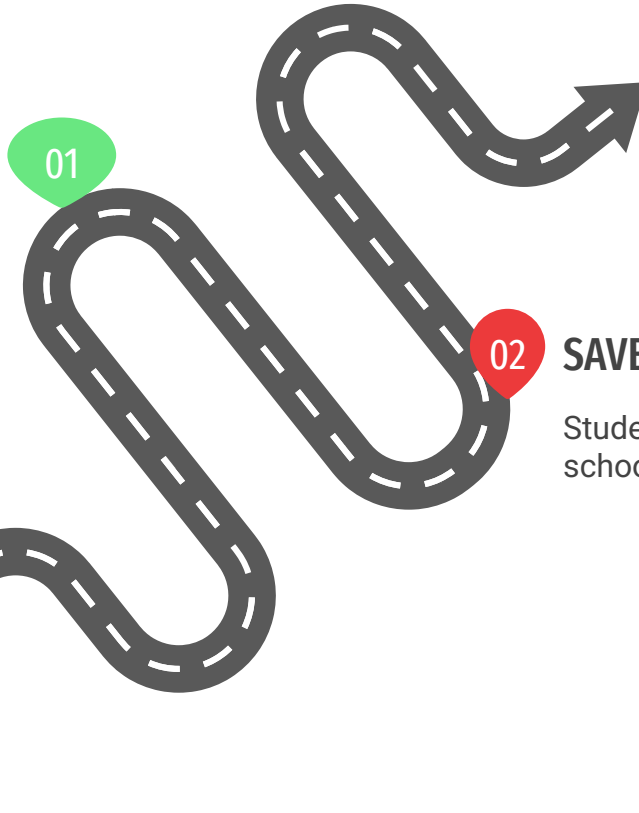
Tier 2 small groups: TMHG; CMHA-Smart Recovery; Bounce Back; Tier 2/3 Intensive: Klingberg- Clinicians; CJR



Prevention

Sandy Hook-Say Something

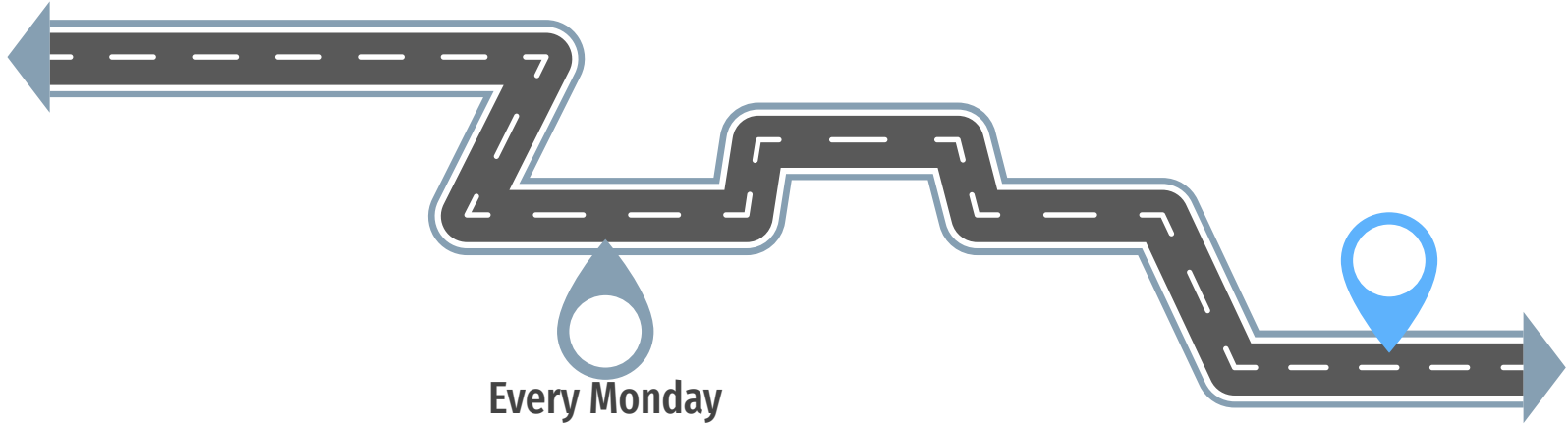
Recognize the warning signs of someone at-risk of hurting themselves or others and how to say something to a trusted adult to get help



SAVE Clubs

Student-led clubs to promote safe schools

Instruction



Every Monday Matters

Addressing SEL
School-wide Needs;
supplemental small
group instruction

Community Partnerships

Wellmore Urgent Care

203-580-4298

Outpatient level of care that provides walk-in care (no appointment necessary) for youth who are experiencing a mental health or behavioral crisis.

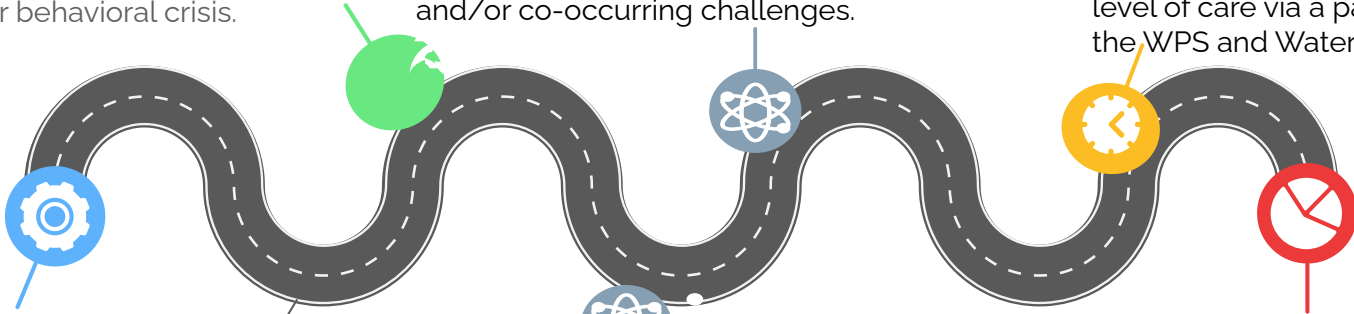
Wheeler Intensive In-Home Care

475-222-6015

Intensive In-home Behavioral Health Service (IIBHS) helps children, adolescents and young adults, ages 3 to 24, with acute psychiatric and/or co-occurring challenges.

Crisis Intervention Team for Youth (CITY) **1-800-563-4086**

Connect students who struggle with mental health with the next level of care via a partnership with the WPS and Waterbury PD.



CT Youth

Mental Health/ Trauma Screening

Wheeler Clinic In-Home Program- IIBHS Intensive In-Home Behavioral Health Service

Wellmore: IICAPS

Helps children and families in crisis through home-based individual and family therapy, 24-hour crisis response, parent guidance, school consultations, and other methods

CMHA: EDT/ Shine

After school extended day treatment program provides clinical services for children and adolescents ages 5 through 17 and their families in the Greater Waterbury area



Intervention: *Tier 2*

Smart Recovery

HS *pilot* of small group substance abuse counseling (self-report)

01

CJR

Individual clinician care

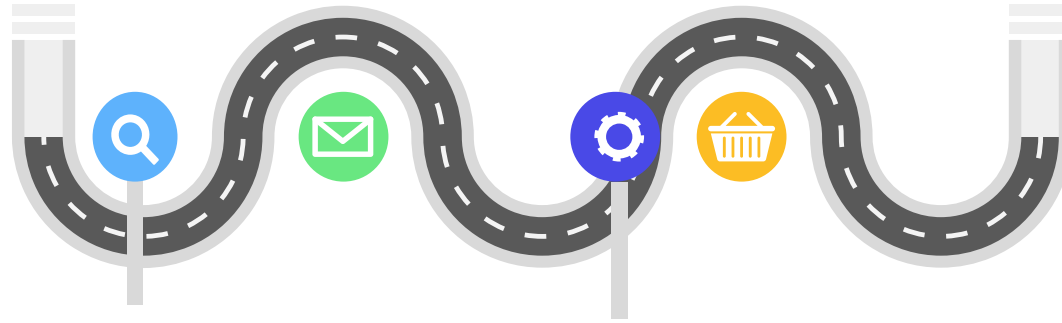
02

CMHA: Bounce Back/ CBITS

Small group therapy aligned to trauma care when students ages 5-11 have experienced trauma

03

Intervention: *Tier 3*



Klingberg

Clinicians in 7 schools provide individual therapy to students.



PTR

A research-based, comprehensive model of assessing student behavior and then setting specifically, targeted goals along with a replacement behavior