



### **School Mission Statement**

The mission of Ethel Schoeffner Elementary School is to provide a high-quality education enabling all students to work independently and cooperatively as empathetic, respectful, and productive life-long learners.

### **School Vision Statement**

While preparing students to be responsible citizens who inspire others to do their best, Ethel Schoeffner Elementary School provides a high quality education in a safe, equitable, and nurturing environment, allowing students to achieve academic, social, and emotional goals.

### **School Belief Statements**

#### **We believe...**

- educating a well-rounded child is our top priority.
- all students are valued as individuals with unique physical, social, cultural, emotional and intellectual needs.
- stakeholders have high expectations for student achievement.
- open and honest communication builds trust and fosters relationships among all stakeholders.
- safe and supportive environments, which provide inclusive and equitable opportunities for all, are the key to overall success.
- literacy proficiency is essential to be future ready.

## **Everyday Student Essentials**

**In an effort to help our students be empathetic, respectful citizens and productive life-long learners we have established our Everyday Student Essentials. We will hold our students accountable for following these Essentials.**

### **Everyday Student Essentials**

**Essential 1: Respond to all with respectful words and body language.**

**Essential 2: All transitions will be swift, quiet, and orderly.**

**Essential 3: Keep yourself and the environment clean.**

**Essential 4: Actively listen when someone is speaking.**

**Essential 5: Learn from your mistakes and move on.**

**Essential 6: Always say thank you when given something.**

**Essential 7: If someone bumps into you, say excuse me, even if it was not your fault.**

**Essential 8: Greet others and make them feel welcome.**

**Essential 9: No matter the circumstances, always be honest.**

**Essential 10: Always strive for excellence.**

### **Important Dates in September**

9/1/25 - Labor Day Holiday

9/2/25 - August Students of the Month recognized

9/5/25 - Concession Sale *\$3 maximum*

9/9/25 - Pep Squad Practice 3:05-4:30

9/10/25 - Progress Reports go home

9/12/25 - Student Interest Clubs - 8:15-9:10am

9/17/25 - **Student Holiday** - Faculty Professional Development

9/23/25 - Pep Squad Practice 3:05-4:30

9/24/25 - 4H 3:05-4:15

9/26/25 - Concession Sale *\$3 maximum*

Ethel Schoeffner Elementary is excited to stay connected with families through social media!

Follow us on:

X  
@ESE\_Sharks

Instagram  
@Schoeffnerelementary

Facebook  
Ethel Schoeffner Elementary



*You can see our Sharks in action!*



### Car Rider Logistics

#### Morning Arrival

- Always enter the parking lot from the side closest to New Sarpy.
- When dropping off your child, pull all the way to the right. This allows teachers and staff to enter and park until 7:35 AM.
- Staff members will be on duty to receive students until 7:50 AM. Students arriving after 7:50 are considered tardy.
- If no adult is present at drop-off, please park and escort your child into the office to sign them in.
- Do **not** park in the bus circle before 8:10 AM.

#### Afternoon Dismissal

- Park in the side parking lot and walk to the cafeteria doors to pick up your child.
- Anyone other than a legal guardian must be listed on the Emergency Card in order to pick up your child. ID will be required for verification.
- A school representative will check you in and release your child safely.
- If you need to check your child out early, please do so **before 2:30 PM**, as the office becomes very busy preparing for dismissal. While the ESE 2025-2026 Family Handbooks states 2:45, this is incorrect. The correct time is 2:30 PM.

## August Students of the Month

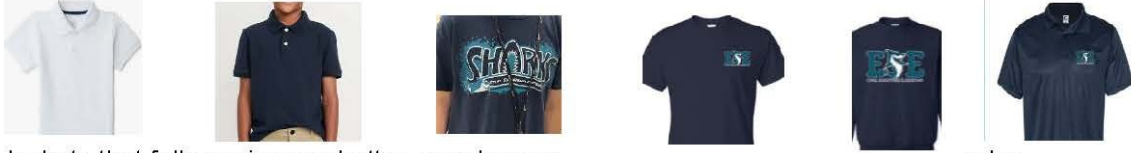
Kenzy Lewis, Adalyn Bridgeford, Maggie Deis, Riley Scardigli, Emily Deaton, La'riyah Bradford, Raeghan Isaac, Eva De Oliveira, Dylan Harris, Charlotte Alaniz, Leo Huertas, Rilee Felton, Karlee Gonzales, Remington Morrow, Jahni Lewis, Brayson Ficaro, Kallie Trosclair, Josiah Corbray, Emma Jordan

**2025 – 2026 Student Dress Code**

Uniform apparel will only be sold through **Skipper's** online store: <https://ese2025.itemorder.com/shop/home/>  
 Online store is closed until September 29. Next purchasing window will be September 29 - October 13

**Shirts/Sweatshirts**

- Solid white or solid navy collared shirt, navy ESE spirit shirt, or 25-26 Theme Shirt can be worn any day.



- Jackets that fully unzip or unbutton may be any color
  - **Non-ESE logos or printed images may be no bigger than the size of a fist**
  - **Jackets must remain unzipped while inside the building.**
- **Pullovers must be solid - navy, white, gray, black.**
  - Non-ESE logos may be no bigger than the size of a fist
  - **No hooded pullover/sweatshirts may be worn on any school campus during the school day.**

**ALLOWED SWEATSHIRTS & JACKETS**



Solid black w/ logo about the size of fist

School logo

Solid – no hood

**SWEATSHIRTS & JACKETS NOT ALLOWED**



Logo too big

Logo too big & has hood

Logo is right size BUT has hood

**Pants/Shorts**

Pants/shorts must be khaki or navy  
 Shorts/skirts/jumpers shall be longer than two inches above the top of knee cap.



Solid navy, solid white, solid gray, or solid black leggings/tights **may only be worn under** school-appropriate skirts or shorts.

**Examples of what is NOT allowed**

No cargo pants /shorts

Leggings may **never** be worn as outerwear



**Too Short**

**Too tight –biking shorts**

Athletic/tennis skirts **may not be worn** if they are less than two inches above the knee.

**ON FRIDAYS ONLY**

Only on Fridays, students may wear an ESE special event or St. Charles Parish Public Schools sponsored event shirt. Previous year special ESE Theme/Event shirts - ex. Fun Run, Spring Fling



**Other St. Charles Parish Event Shirts:**

D.A.R.E Honor Band Desty Darling/Cheer/Baseball/Football Camp 2<sup>nd</sup> to 3<sup>rd</sup> Grade New Sarpy Shirt

Students may wear jeans or bottoms of their choice of any color that are school appropriate. Pajama pants, cargo pants, or torn, cut, or ripped bottoms are not allowed. Leggings or tights may not be worn as outerwear.

4H t-shirts may be worn on Fridays AND on the day of the monthly meetings.

Pep Squad t-shirts may be worn on Fridays AND on the day of Pep Squad events – with sponsor approval.

**Only clear water bottles are allowed.**



# Counselor Connection

## SEPTEMBER NEWSLETTER

### Counseling Staff

We are so excited to have a full time Mental Health Professional this year at ESE! Dr. Miyokia Carter will be providing services to students with the last name A-K. She can be reached at [Mcarter@wearescpss.org](mailto:Mcarter@wearescpss.org). I will provide support for students with the last name L-Z and can be reached at [Kpethe@wearescpss.org](mailto:Kpethe@wearescpss.org). Please reach out to Dr. Carter or myself with any questions or concerns.

Sincerely,

Karen Pethe  
ESE School Counselor

### Counseling Program

The Comprehensive Counseling Program at ESE aims to meet the social emotional needs of students through a three tiered approach.

- Tier 1 refers to supports that all students will receive. Dr. Carter will provide Tier 1 to 3<sup>rd</sup>-5<sup>th</sup> grade during morning meeting. Mrs. Pethe will also provide Tier 1 to 3<sup>rd</sup> grade during morning meeting, as well as 4<sup>th</sup> and 5<sup>th</sup> during enrichment.
- Tier 2 will be small group sessions for student's identified as needing additional support. Small groups may address topics such as anxiety or anger management.
- Tier 3 is individual meetings with students as requested. Dr. Carter will do Tier 3 for A-K and Mrs. Pethe will do Tier 3 for L-Z.



### Growth Mindset

Growth Mindset is something that Dr. Carter and Mrs. Pethe will review throughout the year with students. Growth Mindset means believing you can get better at something if you keep trying, practicing, and learning from mistakes. Students in Mrs. Pethe's enrichment classes recently learned about growth mindset and made a collaborative poster with ways they can practice having a growth mindset and growing those brains!



# Art News

Our Schoeffner Sharks will be using their talents to create challenging artwork this year. Research has proven that students who participate in the arts perform better in other fields of study. Art teaches creativity, cooperative learning, responsibility, problem solving skills and appreciation of the arts. In art class students will learn the elements of art such as line, shape, texture, space, value and form. Students will also learn about famous artists and cultures around the world. Some of the art projects include drawing, painting, printmaking, collage and sculpture.

Our school is a member of Artsonia, the world's largest online art museum where each student will have a digital art portfolio. Artsonia manages student art portfolios in a safe and educational manner, developing students' pride and self-esteem as well as involving families in arts education. You may use the QR code



or this link <https://www.artsonia.com/connect/H8PZRW64>: to get an account set up for your child. Only the child's first name will be entered. You will be able to invite family and friends to view the artwork by joining their fan club. Merchandise featuring the student's artwork may also be purchased in the giftshop. These make great gifts or treasured keepsakes!

I'm looking forward to a great year!

Sandy Mannear  
smannear@wearescpss.org

# Welcome to 3rd Grade



COOL

In THIRD grade news...

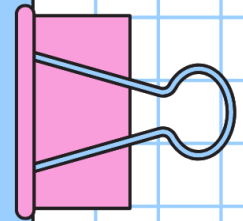
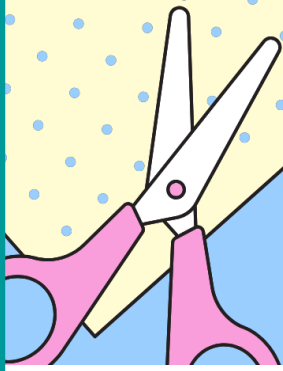
Third graders are rolling right along becoming SHARKS! We've created class rules, started partner work and even began science experiments! In ELA, students have been working on fluency and reading comprehension with poetry and the novel, Stories Julian Tells. In Math, these mathematicians have been working on their multiplication fluency and even division strategies! These bright minds have also started to explore the hurricane that hit Galveston, Texas in 1900, as well as, learning about life in the colonies, the Stamp Act, the Boston Tea Party, and First Continental Congress in Social Studies. Third graders have been so busy since the start of school- we can't wait to see how much they grow this year!



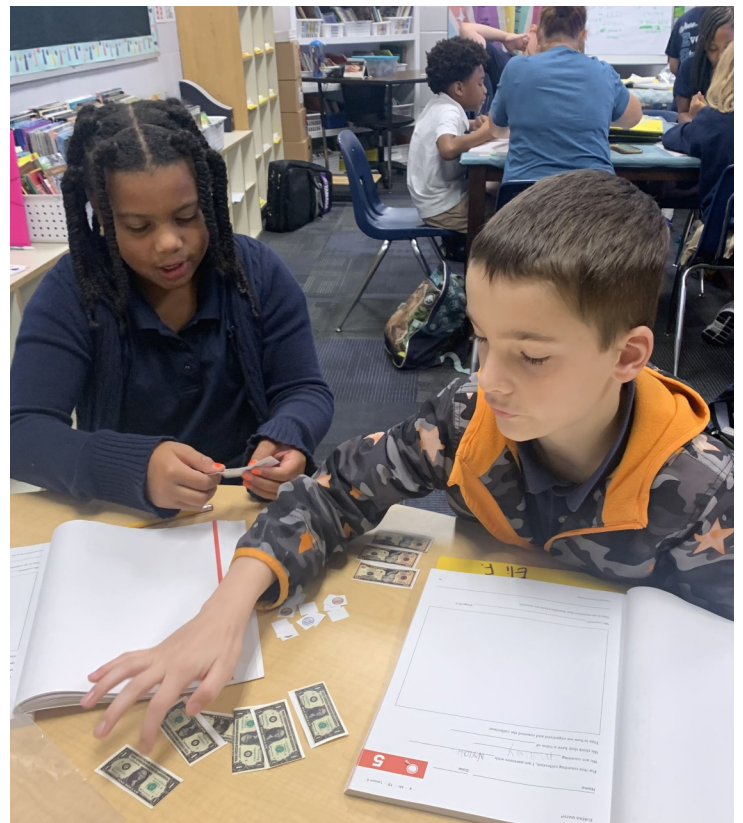
Third graders practicing their reading fluency in ELA!



# Welcome to 4th Grade



Fourth graders have jumped right into learning this year! In math, students are building a strong foundation by working with place value up to the millions. We are also exploring different number forms to understand how large numbers are built and compared. In science, we are analyzing rock layers to reveal how Earth has changed over time. Social studies is taking us back in time as we study nomadic hunters and examine how early societies began to take shape. In reading, we're enjoying *Frindle* by Andrew Clements, using it to practice fluency and comprehension to prepare us for our upcoming unit on *The Whipping Boy*. It's been a busy and exciting start to the year for our fourth graders.



# WELCOME TO 5TH GRADE!

Fifth graders are off to a great start this year! They are having an amazing time getting to know each other, and learning what fifth grade is all about! We are building our classroom together, and they love sharing during Morning Meeting!



# Pep Squad Practice Schedule

## 3:05-4:30 PM

| Fall Semester   | Spring Semester  |
|---|--|
| <p>August 26<br/>           September 9<br/>           September 23<br/>           October 7<br/>           October 21<br/>           October 28<br/>           November 4<br/>           November 11<br/>           November 18<br/>           December 2<br/>           December 16<br/>           *Christmas Party</p> | <p>January 13<br/>           January 27<br/>           February 3<br/>           February 10<br/>           March 3<br/>           March 17<br/>           March 31<br/>           April 14<br/>           April 28<br/>           May 5<br/>           May 12<br/>           May 19</p> |



### AHERA Management Plan

**Notice:** In 1986 all asbestos materials were identified in all school buildings. A management plan was developed for each school as per the Asbestos Hazard Emergency Response Act (AHERA). The management plan is located in a binder in the main office of each school. The binders are available for review upon request.

Since the plan was developed, most of the asbestos has been removed. In a few buildings, some floor tile still remains that contains asbestos. All of the schools meet the health requirements that pertain to the regulation. If you have any questions concerning this topic, please contact Kevin Barney, Director of Physical Plant Maintenance at 985-331-3600 between the hours of 7:00 a.m. and 4:00 p.m.

## Welcome to the 2025-2026 School Year!

### Please note some tips below on how to kick off a healthy start.

- **Every student must have an updated immunization record on file at school.** Please check with your healthcare provider to be sure your child is up to date on his/her immunizations to avoid possible exclusion from school.
- **If your child needs medication at school, please obtain a medication packet from the nurse's office to be filled out by you and your child's doctor.** You must sign in any medication (over the counter or prescription) with the School Nurse with the medication appropriately labeled by the pharmacist. **Please note that a new medication order must be completed every school year.** Please contact me to make prior arrangements to sign in any medications to ensure that you have all of the appropriate paperwork completed and that I will be available.
- If your child has had **any changes in his/her medical history over the summer**, please remember to update the School Nurse as soon as possible. Medical issues that the school nurse should be aware of include **asthma requiring the use of an inhaler/nebulizer, diabetes, severe allergic reactions that require Benadryl/Epipen, seizure disorders, special diets** and any other type of medical diagnosis or special needs. We highly recommend communication with the School Nurse for the safety and health of your child.
- **If your child has any food allergies or requires a special diet, please contact me to obtain the proper paperwork for school.** Please remember that a new diet order must be completed every school year. Also, if your child no longer has food allergies, please send us notification from the doctor's office so that we may update our system.
- **Influenza (also known as the flu) is a contagious respiratory illness caused by influenza viruses that infect the nose, throat, and lungs.** Flu is different from a cold and usually comes on suddenly. Each year flu viruses cause millions of illnesses, hundreds of thousands of hospital stays, and thousands or tens of thousands of deaths in the United States. Flu can be very dangerous for children. CDC estimates that between 6,000 and 26,000 children younger than 5 years have been hospitalized each year in the United States because of influenza. The flu vaccine is safe and helps protect children from flu. Please note more information at <https://www.cdc.gov/flu/>.

I am looking forward to a healthy school year! Please do not hesitate to call or email me with any questions or concerns.

Thank you!



Your School Nurse,  
Abbie LeRouge, RN, BSN  
[alerouge@wearescpps.org](mailto:alerouge@wearescpps.org)





# ETHEL SCHOEFFNER ELEMENTARY 4-H CLUB SHARKS



## Club Meetings

4-H members will participate in club meetings at school, which will feature hands-on projects and updated information on school and parish 4-H program opportunities.



## AFTERSCHOOL

## Club Dues & Requirements

4-H members will be required to pay club dues, which will cover the cost of purchasing club materials and official club membership into the St. Charles Parish and Louisiana 4-H Youth Development programs. 4-H members and families will need to complete necessary school and parish 4-H forms to participate in the program. See your 4-H Club Leaders for necessary School 4-H Club forms. Parish 4-H Enrollment Forms will be distributed at the first club meeting to be returned to school before their October club meeting.



**\$10 FEE**



**SCHOOL & PARISH  
4-H FORMS**



## Communication & Updates

After enrolling in the 4-H club program, members may be invited to join their school club 4-H Google Classroom. 4-H members may access the Google Classroom for school and parish 4-H program updates. 4-H Leaders will provide updates at school and club meetings. For questions about the school program, contact your 4-H Club Leaders. For questions regarding any parish program and beyond, contact the Parish 4-H Agent.



## Parish 4-H & Beyond

By joining the school 4-H club, members are invited to participate in 4-H opportunities beyond their school level. Members will receive monthly 4-H newsletters posted in their school club Google Classroom and can visit the parish 4-H websites for updates: [www.lsuagcenter.com/stcharles](http://www.lsuagcenter.com/stcharles) and [www.facebook.com/scp4h](https://www.facebook.com/scp4h)



The LSU AgCenter and LSU provides equal opportunities in employment and programs.

## MEET YOUR ESE 4-H LEADERS



*Mrs. Annette Matherne*  
amatherne@wearescpss.org

*Mrs. Myrtle Keller*  
mkeller2@wearescpss.org

*Mrs. Gaynell Jacob*  
gjacob@wearescpss.org

*Dr. Kali Zammit*  
kzammit@agcenter.LSU.edu



**PARISH 4-H AGENT**

# ETHEL SCHOEFFNER ELEMENTARY 4-H *Club*



## Meeting Schedule

|           |                               |
|-----------|-------------------------------|
| Wednesday | September 24                  |
| Wednesday | October 29                    |
| Wednesday | November 19                   |
| Wednesday | December 17                   |
| Wednesday | January 28                    |
| Wednesday | February 25                   |
| Wednesday | March 25                      |
| Wednesday | April 29 **By invitation only |

\*Members will be notified of any date changes.

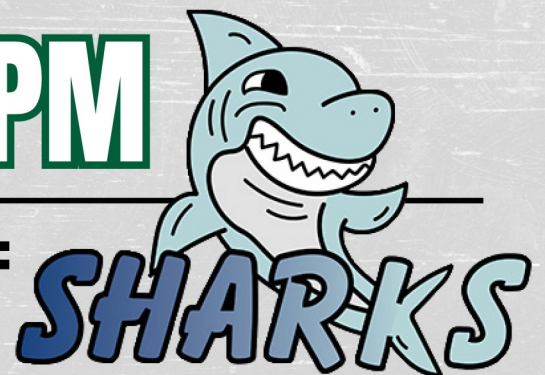
# 2025-2026

### MEETING TIME:

# 3:05 PM - 4:15 PM

### ETHEL SCHOEFFNER 4-H LEADERS:

MRS. MATHERNE, MRS. KELLER, AND  
MRS. JACOB

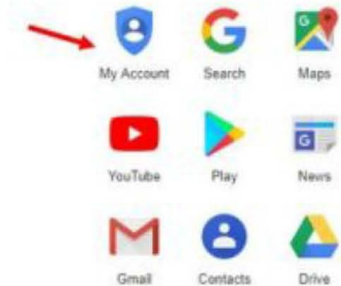


## DIRECTIONS FOR ACCESSING GOOGLE AND AMIRA FROM HOME

1. Using Google Chrome, click on the gray grid in the top right corner of the screen.



2. Click on “My Account.”

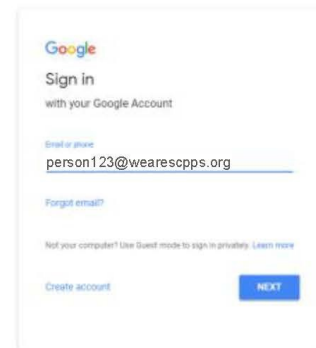


3. Click on “Sign In” in the top right corner of the screen.

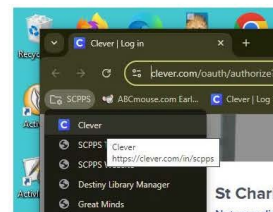


4. Enter the username that was provided to your child. This should be your child’s last name (or most of it) with a combination of numbers. You will need to add @wearescpss.org behind your child’s username.

5. Enter the password provided to your child. Their password should be scp followed by a combination of numbers.



6. You now have access to your child’s Google Drive and Clever. In order to access Amira, click on the SCPPS bookmark, then Clever.



Scan this code to learn more about Amira.

7. Once in Clever, click on Amira and your child is ready to read!



# September 2025

| SUNDAY | MONDAY  | TUESDAY   | WEDNESDAY  | THURSDAY | FRIDAY                                      | SATURDAY |
|--------|---|---|--|----------|---|----------|
|        | 1<br>Labor Day<br><b>HOLIDAY</b><br>NO SCHOOL | 2<br>August Students<br>of the Month<br>Recognition | 3  | 4        | 5<br>Concessions<br>@ lunch<br>maximum \$3  | 6        |
| 7      | 8   | 9<br>Pep Squad<br>Practice<br>3:05-4:30 PM          | 10<br>1st Quarter<br>Progress Reports<br>go home                   | 11       | 12  | 13       |
| 14     | 15  | 16  | 17<br>Student<br>Holiday<br>Faculty<br>Professional<br>Development | 18       | 19  | 20       |
| 21     | 22  | 23<br>Pep Squad<br>Practice<br>3:05-4:30 PM         | 24<br>4H Meeting<br>3:05-4:15 PM                                   | 25       | 26<br>Concessions<br>@ lunch<br>maximum \$3 | 27       |
| 28     | 29  | 30  |  |          |   |          |

# September 2025 Elementary Menus

## St. Charles Parish Public Schools

This institution is an equal opportunity provider. Menus are subject to change.

### SEPTEMBER IS NATIONAL BREAKFAST MONTH


This highlights the importance of eating a healthy, nutritious breakfast to fuel the body and mind for the day ahead. To get started, you can:

- **Commit to a healthy breakfast:** every day throughout September.
- **Focus on balance:** Include a mix of protein, carbohydrates, healthy fats, and dairy in your meal.
- **Explore new breakfast options:** and share recipes on social media using hashtags like #BetterBreakfastMonth.
- **Make it a family affair:** by enjoying meals together before heading out for the day.

### AVAILABLE DAILY

**With all meals**  
Low Fat White Milk  
Fat Free Flavored Milk

**Cold Lunch Choice**  
Monday: Sunbutter Sandwich  
Tuesday: Charley Box  
Weds.: Deli Sandwich  
Thursday: Entrée Salad  
Friday: Sunbutter Sandwich

| Monday, September 1   | Tuesday, September 2   | Wednesday, September 3  | Thursday, September 4   | Friday, September 5  |
|---|--|---|---|--|
| <br><b>LABOR DAY</b><br><br><b>NO SCHOOL</b> | <b>Breakfast</b><br>Chicken Biscuit<br>Cereal w/Graham Crackers<br>Yogurt w/Tiger Bites<br>Fruit or Juice Choice<br><br><b>Lunch</b><br>Mesquite Chicken<br>Loaded Mashed Potatoes<br>Steamed Corn<br>Apple Wedges | <b>Breakfast</b><br>French Toast Sticks<br>Cereal w/Graham Crackers<br>Yogurt w/Tiger Bites<br>Fruit or Juice Choice<br><br><b>Lunch</b><br>Beef Vegetable Soup<br>Grilled Cheese Sandwich<br>Garden Salad<br>Banana<br>Brownie | <b>Breakfast</b><br>Sausage Biscuit<br>Cereal w/Graham Crackers<br>Yogurt w/Tiger Bites<br>Fruit or Juice Choice<br><br><b>Lunch</b><br>Beef Dippers<br>Macaroni & Cheese<br>Broccoli Florets<br>Baked Beans<br>Pineapple Tidbits | <b>Breakfast</b><br>Waffle<br>Cereal w/Graham Crackers<br>Yogurt w/Tiger Bites<br>Fruit or Juice Choice<br><br><b>Lunch</b><br>Chicken Filet Sandwich<br>Crinkle Cut Fries<br>Lettuce/Tomato/Pickle<br>Fresh Orange Wedges |

| Monday, September 8  | Tuesday, September 9  | Wednesday, September 10   | Thursday, September 11   | Friday, September 12   |
|--|---|---|--|--|
| <b>Breakfast</b><br>Grits w/Sausage<br>Cereal w/Graham Crackers<br>Yogurt w/Tiger Bites<br>Fruit or Juice Choice<br><br><b>Lunch</b><br>Red Beans w/Steamed Rice<br>Seasoned Mustard Greens<br>Steamed Carrots<br>Cornbread<br>Peaches | <b>Breakfast</b><br>Chicken Biscuit<br>Cereal w/Graham Crackers<br>Yogurt w/Tiger Bites<br>Fruit or Juice Choice<br><br><b>Lunch</b><br>Nachos<br>Steamed Corn<br>Refried Beans<br>Taco Salad Cup<br>Apple Wedges | <b>Breakfast</b><br>Cinnamon Roll<br>Cereal w/Graham Crackers<br>Yogurt w/Tiger Bites<br>Fruit or Juice Choice<br><br><b>Lunch</b><br>Salisbury Steak<br>Mashed Potatoes<br>Broccoli<br>Dinner Roll<br>Banana | <b>Breakfast</b><br>Sausage Biscuit<br>Cereal w/Graham Crackers<br>Yogurt w/Tiger Bites<br>Fruit or Juice Choice<br><br><b>Lunch</b><br>Turkey Stew<br>Steamed Rice<br>Candied Yams<br>Steamed Cabbage<br>Strawberry Cup | <b>Breakfast</b><br>Fresh Donut<br>Cereal w/Graham Crackers<br>Yogurt w/Tiger Bites<br>Fruit or Juice Choice<br><br><b>Lunch</b><br>Fresh Hot Pizza<br>Marinara Sauce<br>Garden Salad<br>Orange Wedges<br>Cookie |

| Monday, September 15   | Tuesday, September 16  | Wednesday, September 17                                     | Thursday, September 18   | Friday, September 19   |
|--|--|---|--|--|
| <b>Breakfast</b><br>Pancake on a Stick<br>Cereal w/Graham Crackers<br>Yogurt w/Tiger Bites<br>Fruit or Juice Choice<br><br><b>Lunch</b><br>Popcorn Chicken<br>Mashed Potatoes & Gravy<br>Cal Blend Veggies<br>Cinnam on Apple Slices | <b>Breakfast</b><br>Chicken Biscuit<br>Cereal w/Graham Crackers<br>Yogurt w/Tiger Bites<br>Fruit or Juice Choice<br><br><b>Lunch</b><br>Jambalaya<br>Broccoli Florets<br>Steamed Carrots<br>WW Roll<br>Pineapple Tidbits | <b>NO SCHOOL</b><br><br><b>PROFESSIONAL DEVELOPMENT DAY</b> | <b>Breakfast</b><br>Sausage Biscuit<br>Cereal w/Graham Crackers<br>Yogurt w/Tiger Bites<br>Fruit or Juice Choice<br><br><b>Lunch</b><br>Fish Nuggets<br>Macaroni & Cheese<br>Green Beans<br>Cucumber & Tomato Salad<br>Pears | <b>Breakfast</b><br>Pancake Sausage Bites<br>Cereal w/Graham Crackers<br>Yogurt w/Tiger Bites<br>Fruit or Juice Choice<br><br><b>Lunch</b><br>Hamburger/Cheeseburger<br>Crinkle Cut Fries<br>Lettuce/Tomato/Pickle<br>Baked Beans<br>Orange Wedges |

| Monday, September 22   | Tuesday, September 23  | Wednesday, September 24  | Thursday, September 25   | Friday, September 26   |
|--|--|--|--|--|
| <b>Breakfast</b><br><b>Breakfast Pizza or Egg Bites</b><br>Cereal w/Graham Crackers<br>Yogurt w/Tiger Bites<br>Fruit or Juice Choice<br><br><b>Lunch</b><br>Chicken Tenders<br>Waffles<br>Green Beans<br>Steamed Carrots<br>Sliced Peaches | <b>Breakfast</b><br>Chicken Biscuit<br>Cereal w/Graham Crackers<br>Yogurt w/Tiger Bites<br>Fruit or Juice Choice<br><br><b>Lunch</b><br>Orange Chicken<br>Fried Rice<br>Asian Chopped Salad<br>Edamame Beans<br>Mandarin Oranges | <b>Breakfast</b><br>Cinnamon Roll<br>Cereal w/Graham Crackers<br>Yogurt w/Tiger Bites<br>Fruit or Juice Choice<br><br><b>Lunch</b><br>Spaghetti & Meat sauce<br>Italian Salad<br>Broccoli Florets<br>Garlic Bread, Banana<br>Jello w/Topping | <b>Breakfast</b><br>Sausage Biscuit<br>Cereal w/Graham Crackers<br>Yogurt w/Tiger Bites<br>Fruit or Juice Choice<br><br><b>Lunch</b><br>Turkey & Sausage Gumbo<br>Steamed Rice<br>Potato Salad<br>Cucumber/Tomato Salad<br>Pineapple Tidbits | <b>Breakfast</b><br><b>Score!</b><br>Cereal w/Graham Crackers<br>Yogurt w/Tiger Bites<br>Fruit or Juice Choice<br><br><b>Lunch</b><br>Mini Corn Dogs<br>Tater Tots<br>Carrots w/Ranch<br>Orange Wedges |

| Monday, September 29   | Tuesday, September 30  |
|--|--|
| <b>Breakfast</b><br>Confetti Pancakes<br>Cereal w/Graham Crackers<br>Yogurt w/Tiger Bites<br>Fruit or Juice Choice<br><br><b>Lunch</b><br>Totchos<br>Green Beans<br>Applesauce<br>Corn Bread | <b>Breakfast</b><br>Chicken Biscuit<br>Cereal w/Graham Crackers<br>Yogurt w/Tiger Bites<br>Fruit or Juice Choice<br><br><b>Lunch</b><br>Sweet & Sour Meatballs<br>Loaded Mashed Potatoes<br>Steamed Corn<br>Apple Wedges |

monthly celebrations

- National Breakfast Month
- National Chicken Month
- National Mushroom Month
- National Honey Month
- National Whole Grains Month
- National Food Safety Education Month
- Fruits & Veggies—More Matters Month
- Hispanic Heritage Month | Sept. 15-Oct. 15
- National Suicide Prevention Month
- National Papaya Month
- National Potato Month
- National Rice Month
- Sourdough September

  
EVERY COMPLETE MEAL WE SERVE COMES WITH YOUR CHOICE OF LOW FAT OR NONFAT MILK!

