

# WELCOME TO KINDERGARTEN!



Parents, as you sit down please take a minute to write on the index card any information you want to share with us today!

Allergies,  
friendships, hopes,  
fears, questions etc.



Mrs. Wright

Mrs. Mills

Miss Becker



# AFTER SCHOOL PLANS

- Transportation form
- Call office for ANY same day changes
- Email teacher for changes to daily transportation information
- If absent, call attendance line (406-522-6510) or record the absence via Powerschool





# SPECIALTY CLASSES

- Health Enhancement and Music will be 50 minutes and take place on a rotating schedule
- Library will be once a week
- Students will do four projects per year with our PAC-funded art teacher



Monday –  
Friday  
8:15-3:15

Specials  
10:10-11:00



Lunch  
11:50-12:40  
A.M recess  
9:55-10:10  
P.M. recess  
2:05-2:20





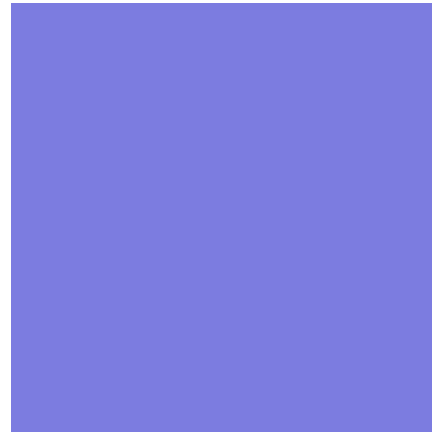
# BIRTHDAYS

- Birthdays merit celebration and your child is welcome to bring their favorite age-appropriate picture book to the classroom for our read aloud each day. Birthday treats for the class are optional.
- Those with summer birthdays will be celebrated according to their classroom tradition!
- Please send invitations outside of school.





# Homework



READ NIGHTLY AND RECORD  
OPTIONAL MATH LATER IN THE YEAR  
OCCASIONAL PROJECTS



# FRIDAY FOLDERS

Folders go home each Friday. Please take a few minutes to look through them. Then return them on Monday.





## SNACKS

Please have your child bring their own healthy snack each day.

There will be emergency snacks when students forget their snacks.

We appreciate replacements throughout the year!



**Lunch money** is completed online through My School Bucks or can send a check to the office to avoid fees.

No “just milk” option

Pack all items your student will need for their cold lunch.

Review lunch choices on Nutrislice app ahead of time.



# The Superkids Reading Program

READING

WRITING

WORD STUDY

HANDWRITING

PHONEMIC AWARENESS





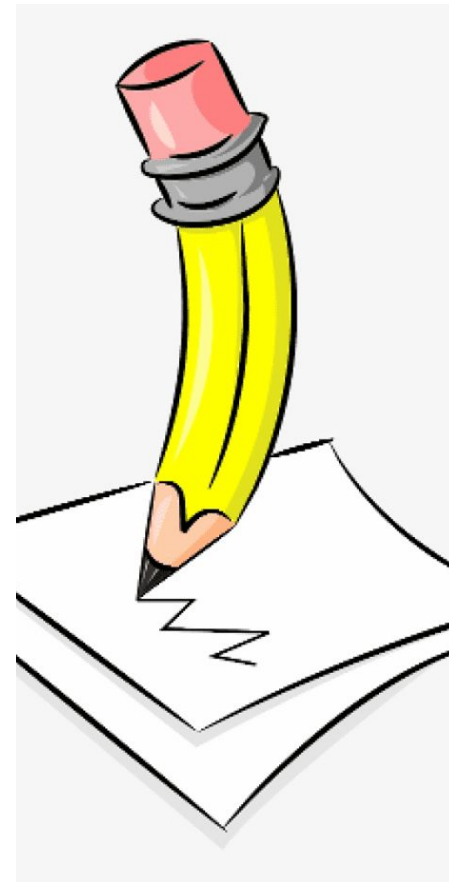
# WRITING

Mini-lesson

Writing time

Share

\*\*\* 3 genres - personal narrative, persuasive, and informational (how-tos)



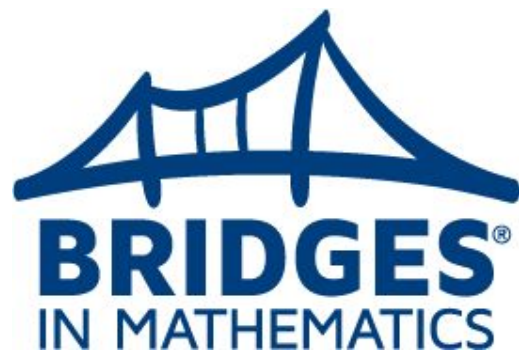


# MATH

Mini-lesson (Bridges)

Workplaces

Number Corner





# Assessments

COMPUTER ADAPTIVE TESTS (ACADIANCE)  
ESGI COMPUTER ASSESSMENTS  
FORMATIVE ASSESSMENTS

BASED ON THE MONTANA OPI  
KINDERGARTEN STANDARDS FOR ELA  
AND MATH

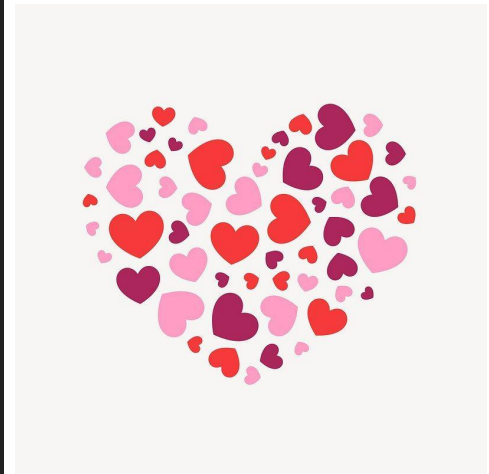
TWO REPORT CARDS PER YEAR (JAN. &  
JUNE) DELIVERED VIA POWERSCHOOL  
WILL ASSESS CHARACTERISTICS OF  
LEARNING AS WELL AS ACADEMIC  
STANDARDS





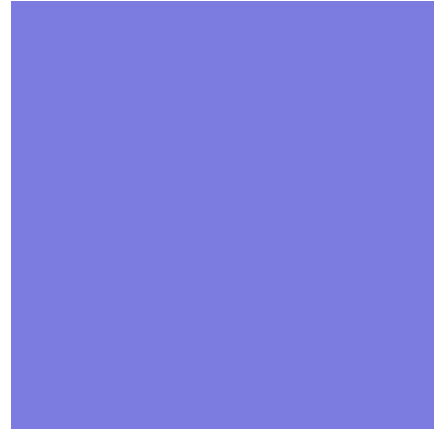
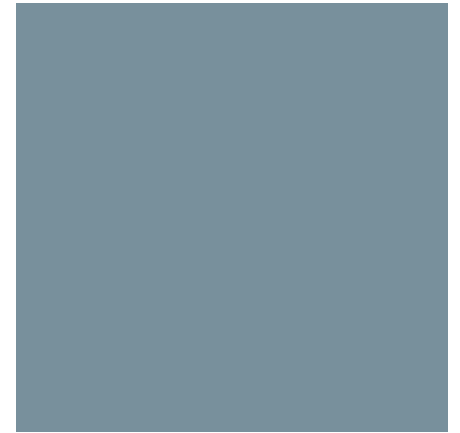
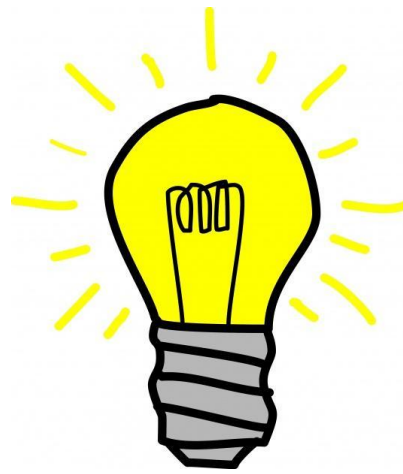
STAR EXPECTATIONS:  
SOLVE PROBLEMS  
TAKE RESPONSIBILITY  
ACT SAFELY  
SHOW RESPECT

SEL PROGRAM (EVERYDAY SPEECH) WHOLE CLASS  
SEL SESSIONS (SECOND STEP) WITH MS COUNSELOR





- Fill out volunteer form
- Volunteer positions available for sign-up at Open House
- Weekly email newsletters
- Morning Star website
- Open House - Sept. 16th (5:30-6:30pm)
- Fun Run - Oct. 10th!



NOTES &  
REMINDERS

# QUESTIONS

PLEASE EMAIL YOUR CLASSROOM TEACHER AS NEEDED! THEY WILL TRY TO ANSWER ANY QUESTIONS YOU MIGHT HAVE.



WILL IS ALSO HERE TO HELP! REACH OUT TO HIM ANYTIME:  
WILL.DICKERSON@BSD7.ORG

Thanks for coming!