

September 2025



Congratulations, Class of 2025!

More than 2,250 LWS D students graduated from our schools in 2025

LWS D COMMUNITY REPORT

A MESSAGE FROM THE SUPERINTENDENT

Dear LWS D Community,

As we prepare for the 2025-26 school year, I want to extend my deepest gratitude to each of you. Thank you for your continued partnership, your trust in our schools and your unwavering commitment to the children in our community.

This year brought with it meaningful progress on some necessary steps forward. Together, we navigated important changes, many of which were complex and not without challenge. Your engagement, feedback and collaboration are always helpful and lead to better and more thoughtful decisions.

I also want to take a moment to express heartfelt appreciation for our incredible educators and staff. Their dedication and daily commitment to student success make Lake Washington a place where students are supported, challenged and inspired. Their work, both seen and unseen, makes a lasting difference in the lives of our students and families.

I am pleased to share that we have finalized a balanced budget for the 2025-26 school year. In doing so, we have also ensured that our reserves meet expectations, an important safeguard to ensure our district is prepared for significant or unforeseen events. Learn more about the budget at: lwsd.org/budget-planning.

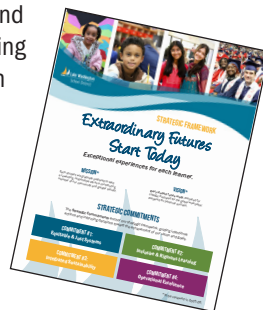
Looking ahead, we are excited to launch our new Strategic Framework this fall. The Strategic Framework grounds us in our values, commitments and mission, serving as our guide for decision-making and long-term planning while keeping us focused on providing exceptional experiences for each LWS D student, every day.

Thank you again for being part of this incredible community.

With appreciation,

Jon

Dr. Jon Holmen, Superintendent
Lake Washington School District



20 SCHOOLS RECOGNIZED THROUGH WASHINGTON SCHOOL RECOGNITION PROGRAM

The Office of the Superintendent of Public Instruction (OSPI) has announced that 20 different LWS D schools have been recognized through the Washington School Recognition Program for the 2023-24 school year.

Statewide, 406 public K-12 schools received state recognition for outstanding achievement in 155 school districts.

Only 16% of schools statewide received recognition this year. Even more impressive – it is rare for schools to achieve these awards for a third consecutive year – and LWS D had seven schools honored for the third year in a row!





WELCOME BACK TO SCHOOL!

We are excited to welcome our students and staff back to school! The first day of school for grades 1-12 is Tuesday, September 2, 2025. Kindergarten has a staggered start, beginning as early as September 5. Check with your local school for details. See the 2025-26 calendar at lwsd.org/calendar.

Here are a few of the exciting initiatives that you will see in the new school year:

- Families of students in grades 6-12 will begin using Canvas, a learning management system, beginning in September. Learn more at lwsd.org/canvas.
- We will officially launch the LWS District Strategic Framework this fall. **Extraordinary futures start today!** This framework reflects our shared commitment to building a bright future for our students, staff and community. This new strategic framework includes several interconnected components designed to bring our vision for students to life:
 - **Our Values** are the heart of the plan.
 - **The Student Profile** is what we're striving to achieve.
 - **Strategic Commitments** anchor the framework.
 - **Strategic Cycles of Innovation** drive how we will get there.
 - **Engagement and Data (KPIs)** inform and enhance the framework and measure progress along the way.



Together, these components form a comprehensive framework that will guide our district towards achieving a vision of excellence for our students. We are committed to working collaboratively with our community of stakeholders to ensure each student's success and to provide exceptional educational experiences for every student.

Learn more: lwsd.org/strategic-framework.

NEW TO LWS DISTRICT? REGISTER ONLINE TODAY

Lake Washington School District serves over 30,500 students in 55 schools. Our students live in Kirkland, Redmond, Sammamish and portions of Bellevue, Woodinville and unincorporated King County. Are you new to the area? Visit our registration webpage today to complete the online process for registration prior to the start of the 2025-26 school year: lwsd.org/registration.

MERITORIOUS BUDGET AWARD

Lake Washington School District is the only school district in Washington state to receive the Meritorious Budget Award – and we have received it eight years in a row! This award is presented by the Association of School Business Officials International (ASBO) Meritorious Budget Award (MBA). This award promotes and recognizes excellence in budget development, communication and presentation in school districts.



ANNUAL REPORT

Want to know more about Lake Washington School District? Check out our 2023-24 Annual Report: lwsd.org/annual-report. The 2024-25 Annual Report will be posted by mid-December 2025.

UPCOMING LEVIES

Every four years, Lake Washington School District asks our community to renew two levies: an Educational Programs & Operations Levy (EP&O) and a School Technology & Capital Projects Levy. LWS District is currently considering replacement levies that will go out to all voters in the district in February 2026. The EP&O levy funds 16% of the LWS District operating budget each year. School Technology & Capital Projects Levies provide funding for acquiring, improving or maintaining school buildings and technology solutions. This levy supports technology needs for teaching, learning and business operations, as well as facility needs like maintaining major systems and ensuring health and safety compliance. Check our website for more information coming soon.



MIDDLE SCHOOL ADDITIONS

Three LWS District middle schools opened new additions last fall – Finn Hill Middle School, Kirkland Middle School and Redmond Middle School. These were the first three projects funded by the 2022 Building Excellence Capital Construction Levy. Scan this QR code to view slideshows of each project.



Finn Hill Middle School (FHMS)

The eight-classroom addition at FHMS was completed as a new wing of the school. This addition includes six general classrooms, one science classroom and one project classroom, providing new permanent capacity for 200 students.



Kirkland Middle School (KiMS)

The addition at KiMS was completed using a modular solution. The facility was manufactured off-site and then transported to KiMS and assembled onsite. The addition includes five general education classrooms, two science rooms and a food science room, providing new permanent capacity for 200 students.



Redmond Middle School (RMS)

The eight-classroom addition at RMS was completed as a new wing near the front of the school. This addition includes six general education classrooms and two science rooms, providing new permanent capacity for 200 students.

GROUND BREAKING AT ROCKWELL ELEMENTARY

On May 8, 2025, Lake Washington School District celebrated a significant milestone with the groundbreaking ceremony for the Rebuild & Enlarge project at Rockwell Elementary School. This project is also funded by the 2022 Building Excellence Capital Construction Levy, which

underscores the community's commitment to providing high-quality educational facilities for its students. The Rebuild & Enlarge project at Rockwell Elementary aims to address the needs of an aging facility while creating space for 252 additional students. The new two-

story building will feature 30 classrooms and support spaces. The new building is scheduled to open in fall 2026. Construction began this summer, with preliminary work having already started this spring. See photos and video of the project at [lwsd.org/rockwell-rebuild](https://www.lwsd.org/rockwell-rebuild).



BUILDING EXCELLENCE



ECRWSS
POSTAL CUSTOMER

Construction began on additions at Eastlake High School and Redmond High School. These projects are also funded by the 2022 Building Excellence Capital Construction Levy and aim to provide additional space for high school students on the east side of the district. Learn more: lwsd.org/services/facilities/construction.

EASTLAKE HIGH SCHOOL (EHS)

The addition project at EHS creates space for up to 300 additional students and will include 12 classrooms and support spaces in the north wing of the building that will open in fall 2026. Construction began this summer. One temporary portable will be added to the site to house the library for one year.

REDMOND HIGH SCHOOL (RHS)

The addition project at RHS also creates space for up to 300 additional students and will include 10 classrooms and support spaces in a new two-story renovation of the administration wing that will open in fall 2026. Construction began this summer. Seven portables will be added to the site to house administrative staff, counselors and music for one year.

CONSTRUCTION HAS STARTED ON TWO HIGH SCHOOL ADDITIONS

Rendering of Eastlake High School Addition



Rendering of Redmond High School Addition



The Lake Washington School District does not discriminate in any programs or activities on the basis of sex, race, creed, religion, color, national origin, age, veteran or military status, sexual orientation, gender expression or identity, disability, or the use of a trained dog guide or service animal and provides equal access to the Boy Scouts and other designated youth groups. The following employees have been designated to handle questions and complaints of alleged discrimination: Civil Rights Coordinator, Director of Human Resources, 425-936-1251, civilrights@lwsd.org; Title IX Coordinator, Director of Athletics and Activities, 425-936-1289, titleix@lwsd.org; and 504 Coordinator, Director of Special Services, 425-936-1407, section504@lwsd.org (16250 NE 74th Street, Redmond, WA 98052).