



COOPERATIVE STRATEGIES

ASSESS • PLAN • FUND • BUILD

Albemarle County Public Schools
Mountain View Preliminary Recommendation

November, 2021

WELCOME & INTRODUCTIONS

THE PLANNING TEAM



RRMM

Virginia-based architectural firm retained by the Division to study potential options for Mountain View ES given its current design, capacity and population growth.



RRMM ARCHITECTS

Cooperative Strategies

National planning firm and long-time partner of RRMM's retained to create a housing and student yield study and co-facilitate the planning process to create a recommended strategy to address population growth in/around Mountain View ES.



COOPERATIVE
STRATEGIES
ASSESS • PLAN • FUND • BUILD



BACKGROUND DATA

AREA GROWTH & MOUNTAIN VIEW IMPACT

Mountain View ES

Built in 1990, expanded in 1996,
2007 & 2016

16.5 acres

91,000 sf

Capacity 624

2021/22 Enrollment: 677 (K-5),
38(Pre-K) = 715*Total

*Enrollment continues to be impacted by Covid-19





BACKGROUND DATA ENROLLMENT GROWTH

K-5* Enrollment vs. Building Capacity

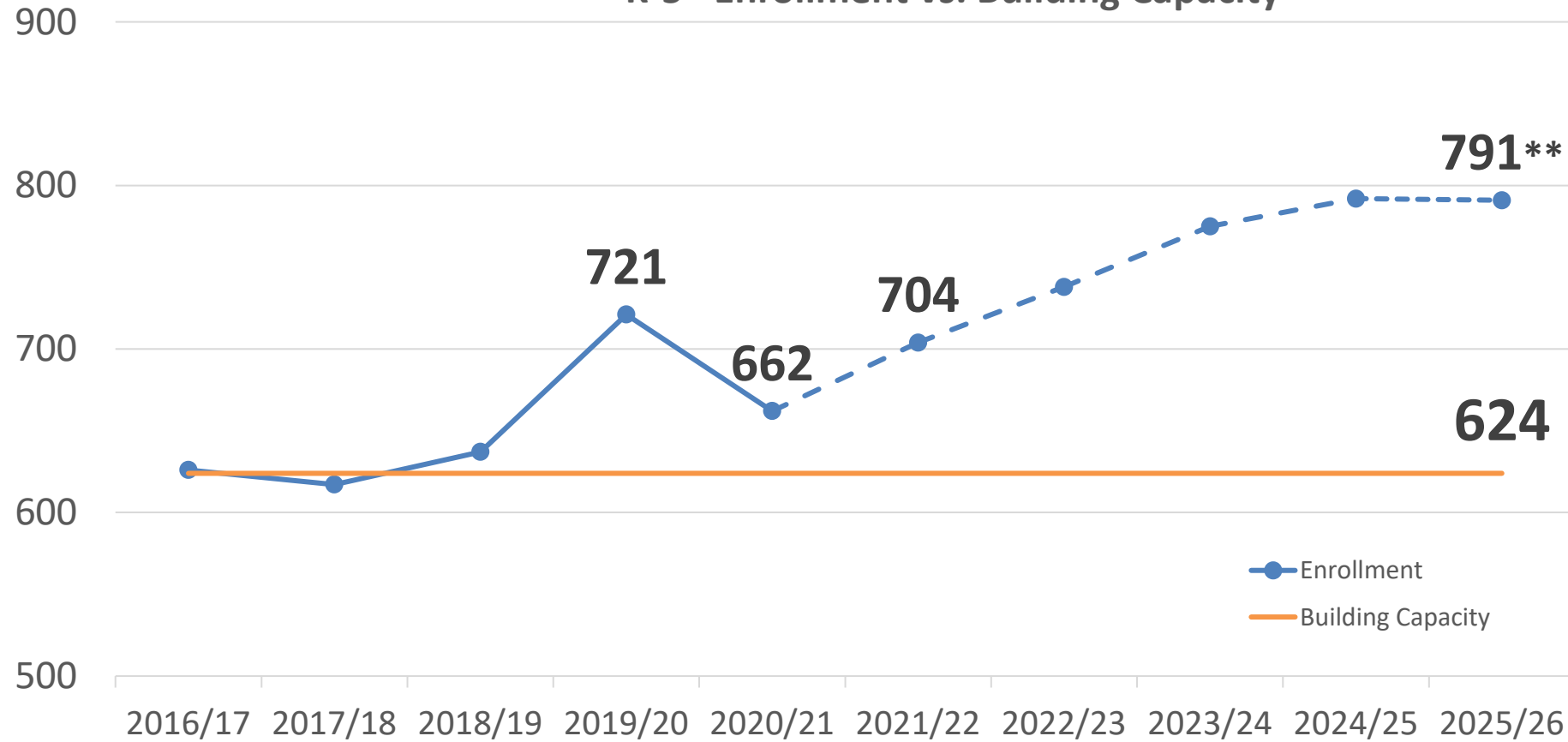


Image courtesy of
ACPS Fall 2020

*The school also has about 45 preschool students. This increases the total enrollment for the school and should be considered for factors such as cafeteria size, parking etc. It does not impact the difference between the capacity and enrollment because the 624 building capacity figure does not include rooms which are utilized for PK programs.

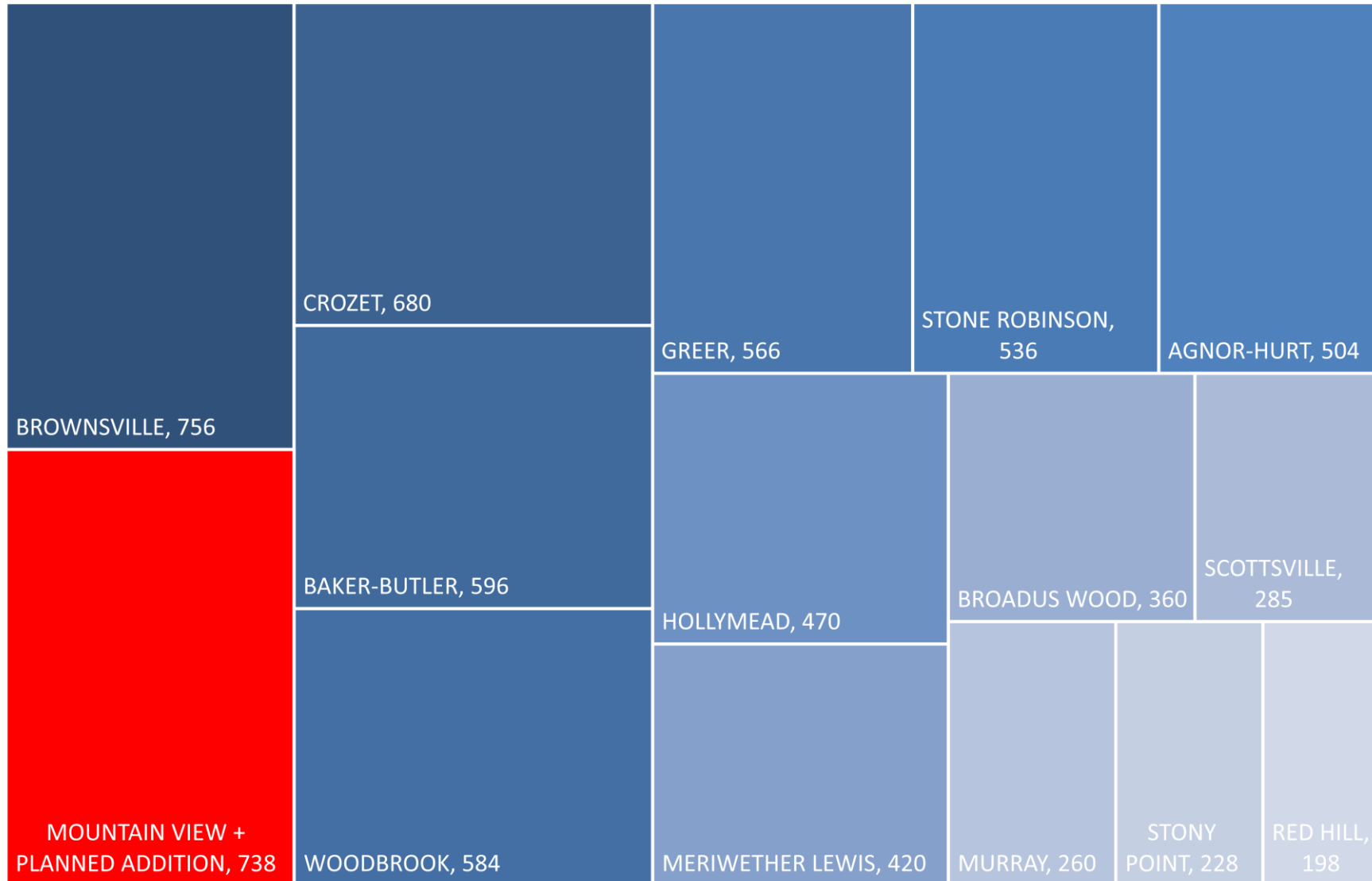
**5 year projection calculated by ACPS using cohort survival methodology. The work of the consultant and this study may influence this projection to ensure we are capturing impact of future development.



BACKGROUND DATA

ELEMENTARY SCHOOL CAPACITY

Capacity by Elementary School





BACKGROUND DATA PLANNED ADDITIONS





PROCESS

MOUNTAIN VIEW PLANNING & ACPS YIELD STUDY

1

A **Student Yield Analysis** calculates division-wide student yields by housing type (single-family unit vs. multi-family unit) by dividing the number of students by the number of housing units. For example, 5 students / 10 homes = a student yield of 0.5 students per home.



2

A **Facility Master Plan** creates a plan for a school or group of schools based on area capacity, enrollment, condition and educational program needs.





PROCESS
MOUNTAIN VIEW PLANNING & ACPS YIELD STUDY

Current Housing Yields

X

=

Planned Development in
Mountain View Attendance Zone

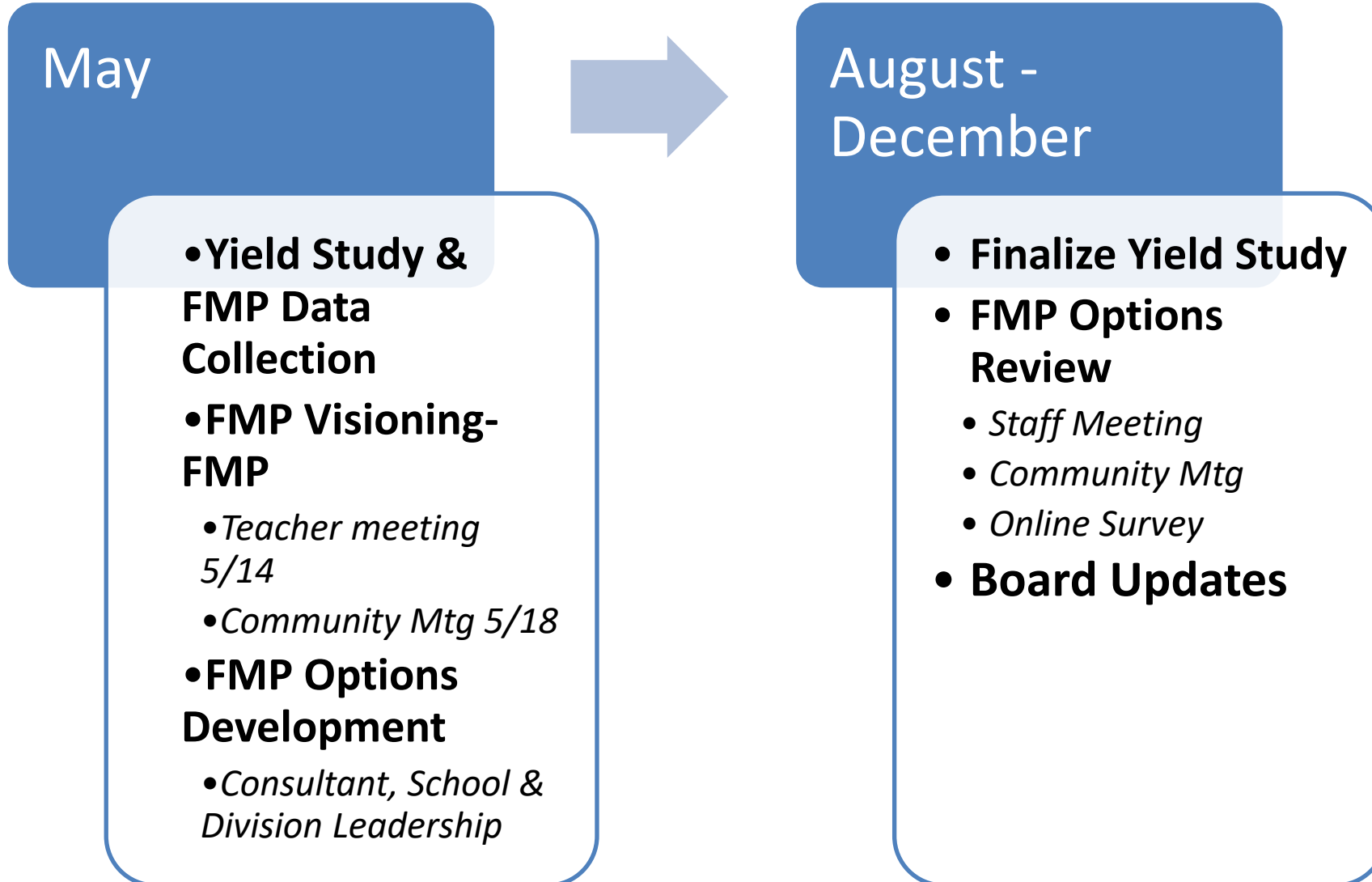


*Potential over the next 10+ years
Students from new housing may not all be new to the Division
Not a net gain of 176 students



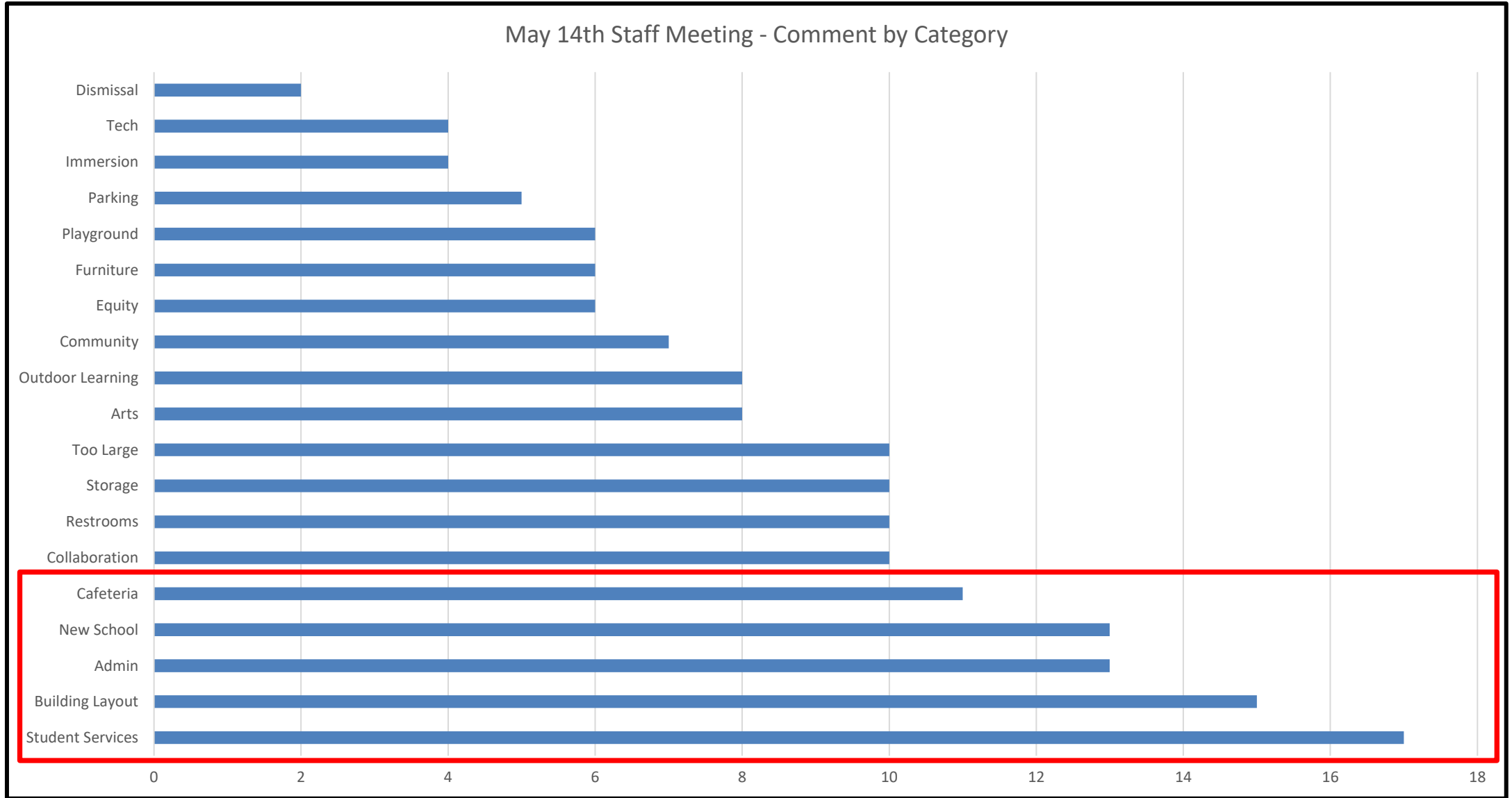
TIMELINE

MOUNTAIN VIEW PLANNING & ACPS YIELD STUDY



STAFF & COMMUNITY FEEDBACK

MOUNTAIN VIEW PLANNING





ADDITIONAL INFORMATION



ADDITIONAL INFORMATION

MOUNTAIN VIEW PLANNING

Albemarle County Public Schools
District Map

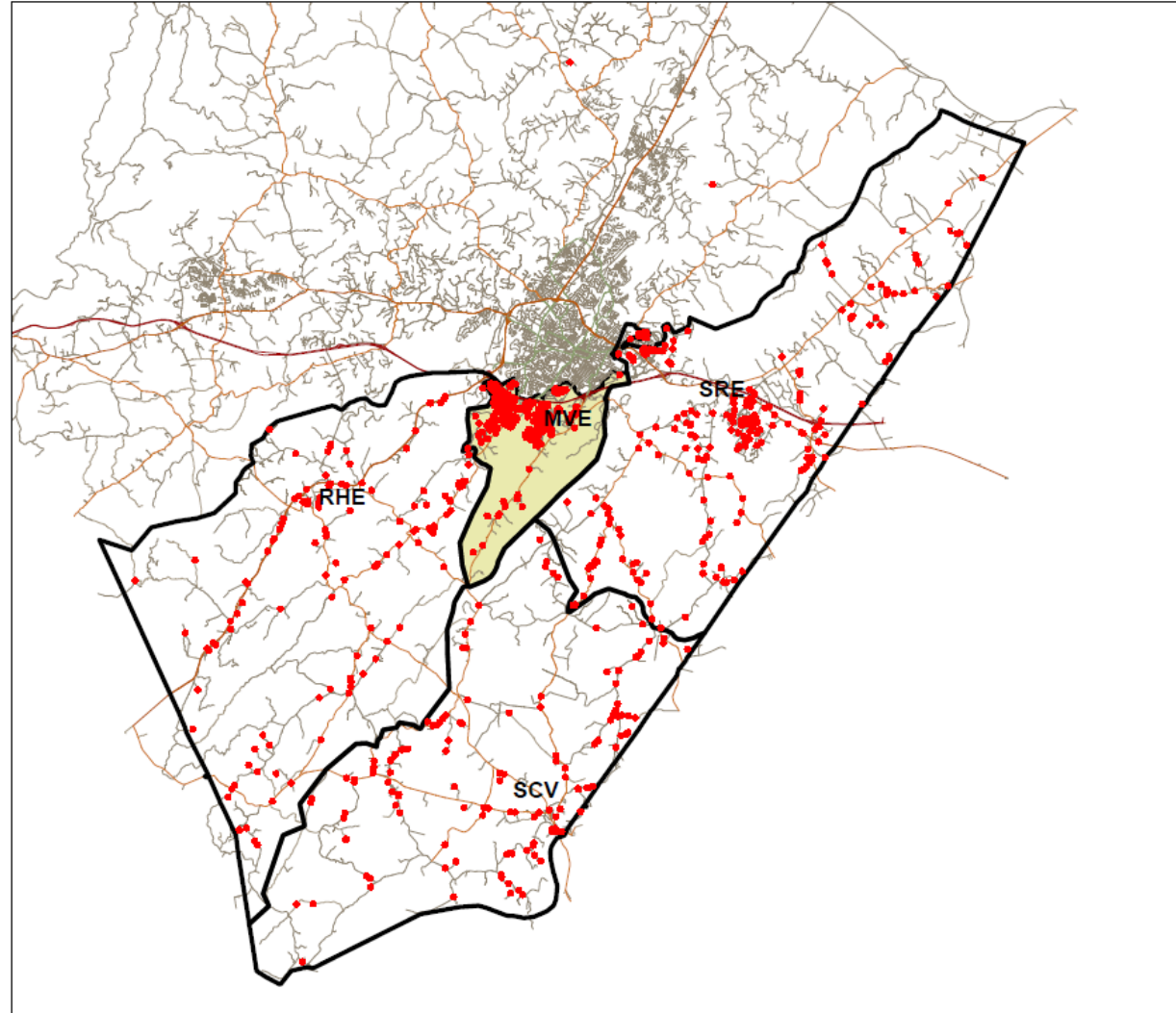


Image courtesy
of ACPS



ADDITIONAL INFORMATION
MOUNTAIN VIEW PLANNING

Elementary School Sizes in other Virginia School Districts

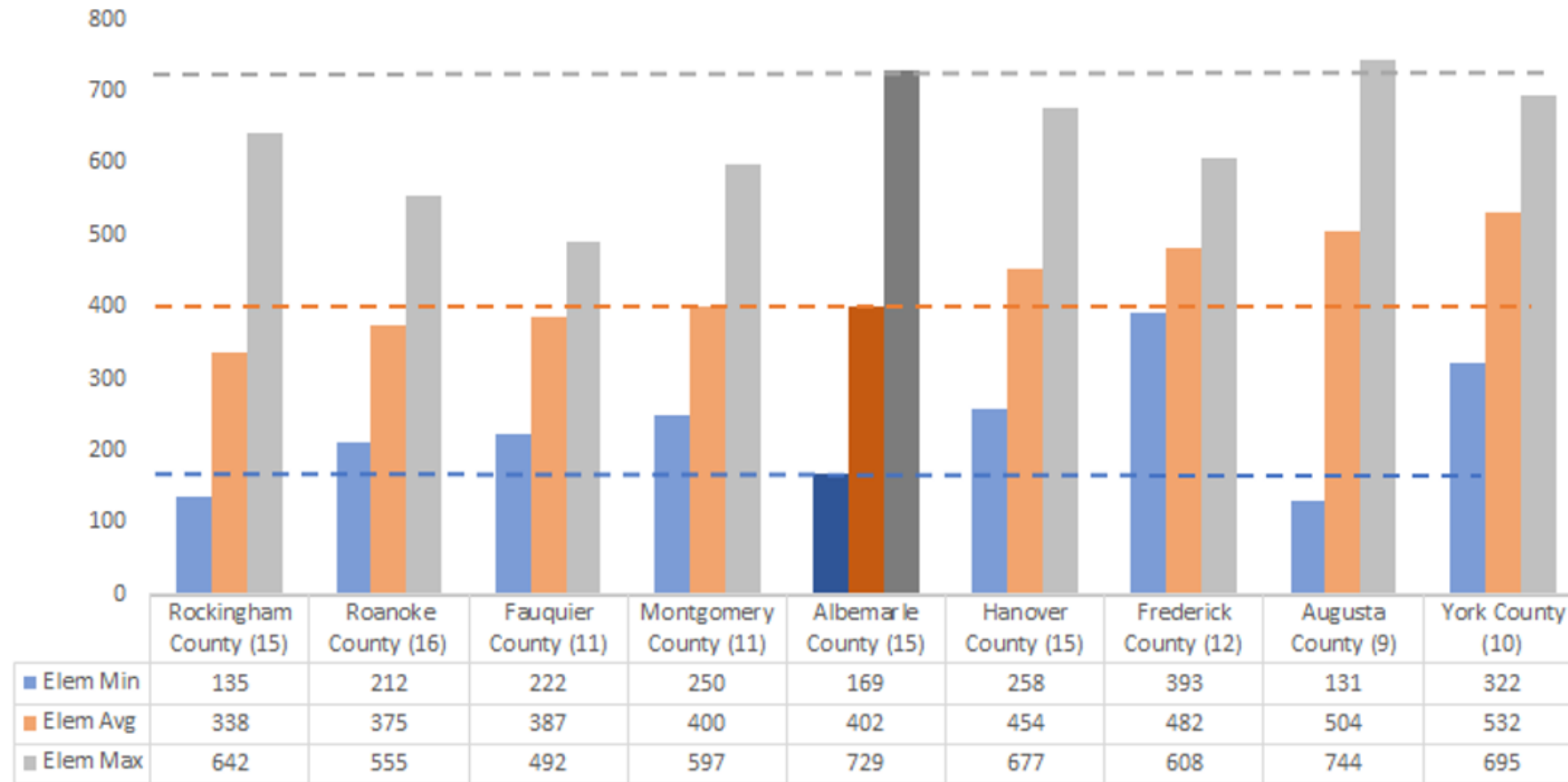


Image courtesy of ACPS

Note: Analysis based on similarly-sized school districts in Virginia, rural/suburban counties. Grade configurations may differ across schools/districts.
Source: VDOE 2020-21 Fall Membership (all grades, full-time count). Elementary schools include preschool programs/centers, primary schools.



ADDITIONAL INFORMATION
MOUNTAIN VIEW PLANNING

Community Survey Results of preferred Minimum and Maximum Elementary School sizes

Minimum
Weighted- 287
Plurality - 200

Maximum
Weighted- 510
Plurality - 500

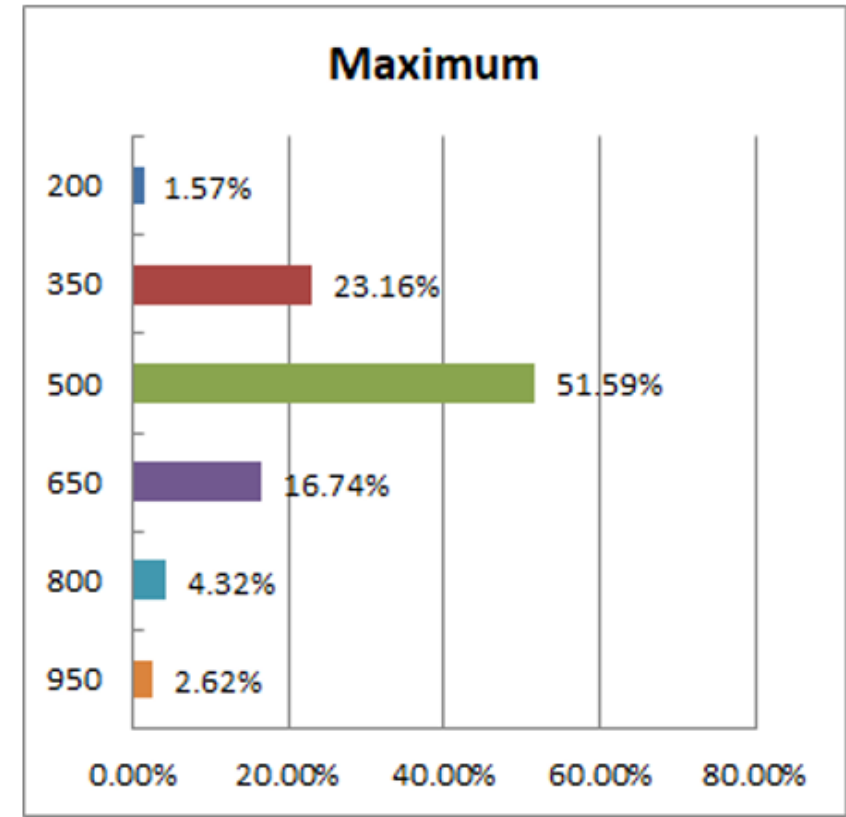
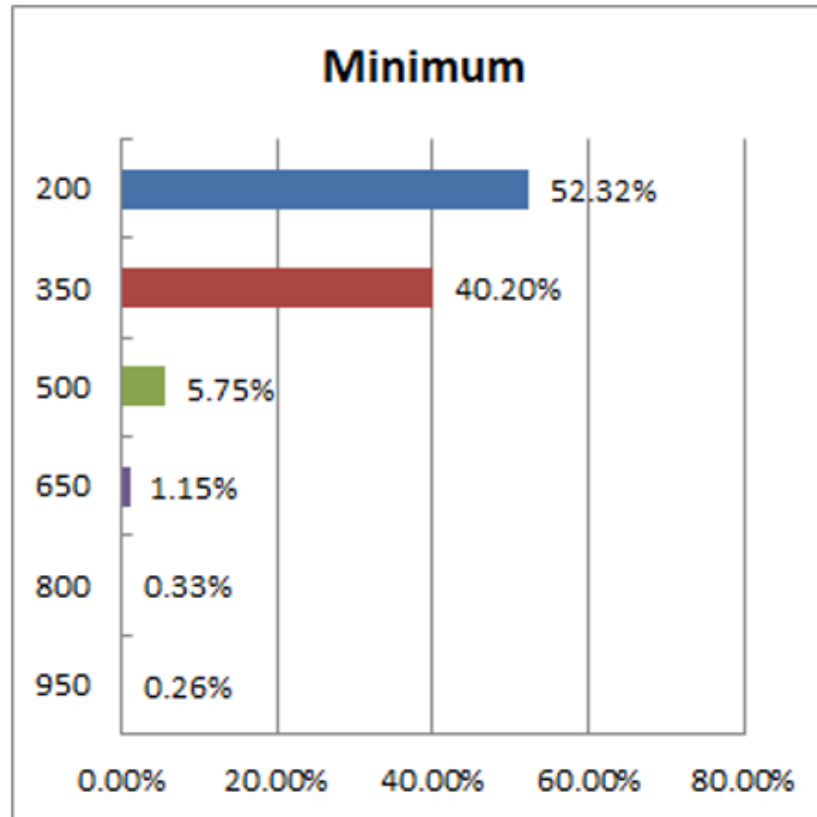


Image courtesy of
ACPS



ADDITIONAL INFORMATION MOUNTAIN VIEW PLANNING

EAB Research Excerpts

Operational Efficiency	Student Achievement	Special & Disadvantaged Populations
<ul style="list-style-type: none">● Studies vary greatly in their conclusions.● One resource found that moderately-sized elementary schools (300-500 students) may balance economies of scale for operations with the negative effects of larger schools on academic achievement.● Since different school and district sizes affect costs in different ways, there is no “optimal” school size.	<ul style="list-style-type: none">● In general, academic achievement increases as school size decreases.● One resource found that in smaller schools, teachers felt both more responsible about and more positive toward their students’ learning.● Based on middle school test scores, students learned more in smaller elementary schools with fewer than 400 students.	<ul style="list-style-type: none">● Smaller schools mitigated economic disadvantage among student populations, while larger schools exacerbated the effects.● Students receiving special education services benefited most from small-group and individualized instruction, a practice made significantly easier by smaller school sizes.

Image courtesy
of ACPS

EAB is an education-based research and data organization that partners with ACPS and other school districts.



FACILITY OPTIONS



FACILITY OPTIONS
MOUNTAIN VIEW PLANNING & ACPS YIELD STUDY

Main Options Considered but NOT Recommended

- **Build new Early Childhood (Pre-K and K) building on Founders Place Site**
- **Move one or more grade levels from Mountain View to Walton MS**
- **Build additions to increase capacity of Red Hill ES by 200 students and redistrict students from Mountain View to Red Hill**
- **Build a new 400-500 seat PK-2 school in the Mountain View attendance zone. Current Mountain View becomes a 3-5 school**
- **Build additions on to Mountain View to increase the capacity to 800-850 seats**
- **Build a new 800-850 seat school to replace Mountain View on an acquired site**



FACILITY OPTIONS
MOUNTAIN VIEW PLANNING & ACPS YIELD STUDY

**Mountain View
Elementary**

400-450 Students

Mountain View Site

**New Elementary
School**

400-450 Students

Acquired Site

Preliminary Recommendation



FACILITY OPTIONS

MOUNTAIN VIEW PLANNING & ACPS YIELD STUDY

Preliminary Recommendation – New 400-450 Seat Elementary School at an Acquired Site Create two separate PK-5 Attendance Zones

Build a new school on an acquired site

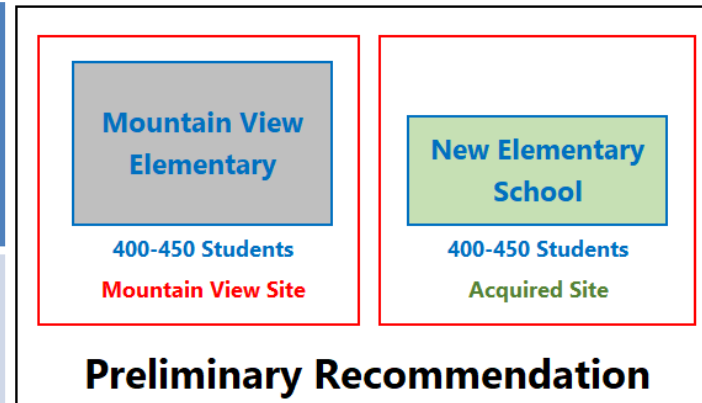
Create two separate PK-5 attendance zones from current Mountain View boundary

Benefits

- Smaller school size for Mountain View and the new Elementary School
- Reduces overcrowding at current Mountain View ES
- Provides additional building capacity for long term growth
- Both schools will have adequate playgrounds, parking, and parent drop-offs

Challenges

- Cost: New building construction and potential land acquisition
- Redistricting required; new boundaries needs to be created for new school
- Increased operational overhead
- Difficult to hire staff to expand the immersion and discovery programs
- Will take 3+ years after site acquisition to design and build a new school





THANK YOU