



welcome back

to **SCHOOL**



Mrs. Adams
Pre-K

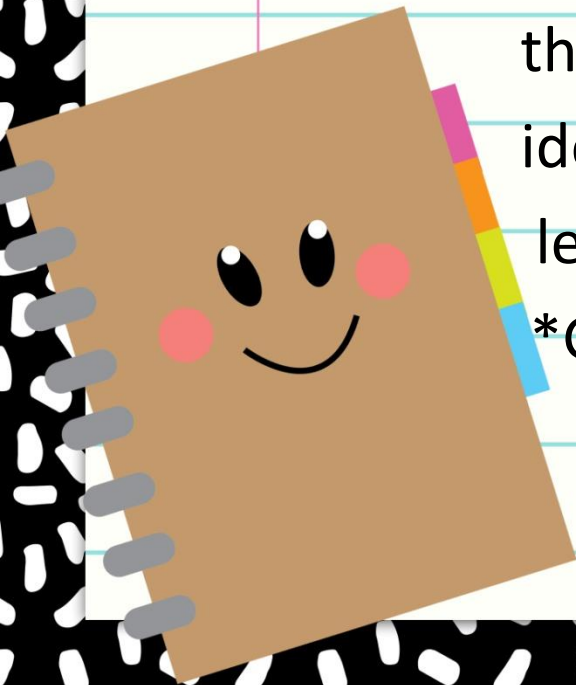
ARRIVAL & DISMISSAL

Arrival: Begins at 8:05

*Late bell rings at 8:30 (must enter building to sign your child in if dropping off after 8:30)

*Students must keep the provided red tag on their backpack. This will allow staff to easily identify your child as a pre-k student and be led to my door.

*Green necklace must be worn daily for the first couple of weeks. We will tie it to your child's backpack after this time.



ARRIVAL & DISMISSAL

Dismissal: begins at 3:05

Scheduled Early Dismissal: (2hrs 45 mins early)

@12:20

*If you choose to pick your child up from school, please use the parent pick up line. A note must be sent to school (folder) and/or emailed to:

LSEattendance@carrollk12.org



school policies

If your child is absent, email:

LSEattendance@carrollk12.org.

Copy me: NicoleAdams@carrollk12.org

*Your child must be fever free for 24 hrs. before returning to school. Germs spread very fast amongst 4-year-olds!

*For health concerns, please contact our school nurse:

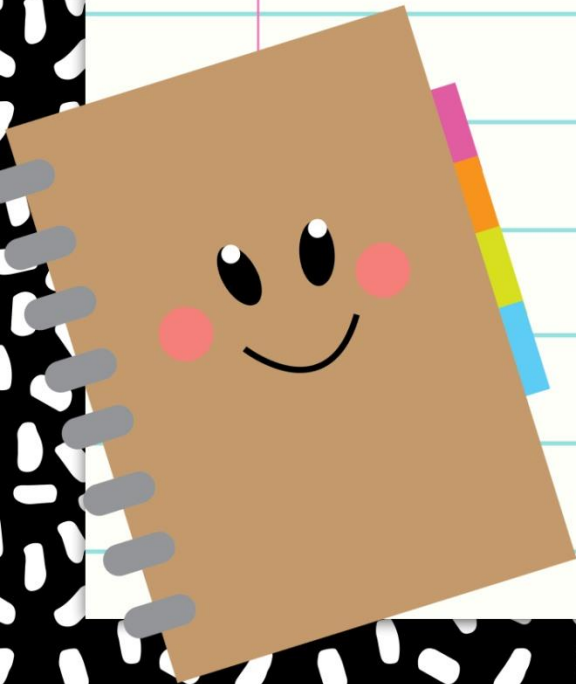
artwigg@carrollk12.org



INCLEMENT WEATHER

Carroll County may close schools, delay the opening, or dismiss students early. Please be sure to watch the local news or check the CCPS website for accurate information.

www.carrollk12.org



class INFORMATION

Folder

*A blue folder will be given to your child and will serve as another means of communication. Please check, empty, and return your child's folder daily.

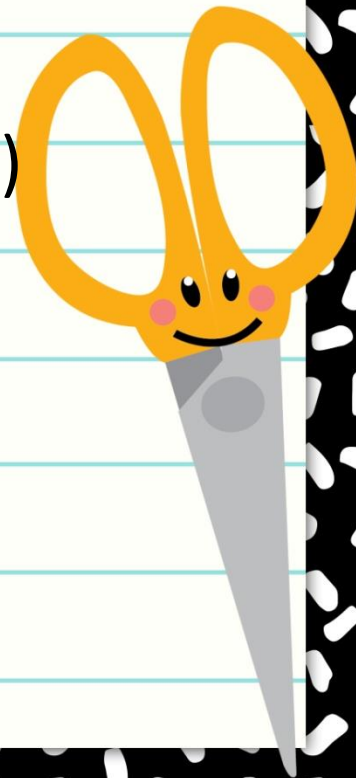


SUPPLY list

- Lunchbox
- Daily snack (dry)
- Water bottle-(labeled w/child's name)

*No Gatorade or juice please 😊

- Family Photo



Supply list

- Crib sheet, small blanket, and small stuffed animal

*Crib sheet, blanket & stuffed animal must fit into backpack.

*Rest items will be sent home on Friday.

Please wash and return on Monday.

- Extra Clothes

*Seasonable clothing including socks & underwear (We will request new clothing as the seasons change.)



wish list

- *Tissues
- *Clorox wipes
- *Hand sanitizer
- *Ziploc bags



class SCHEDULE

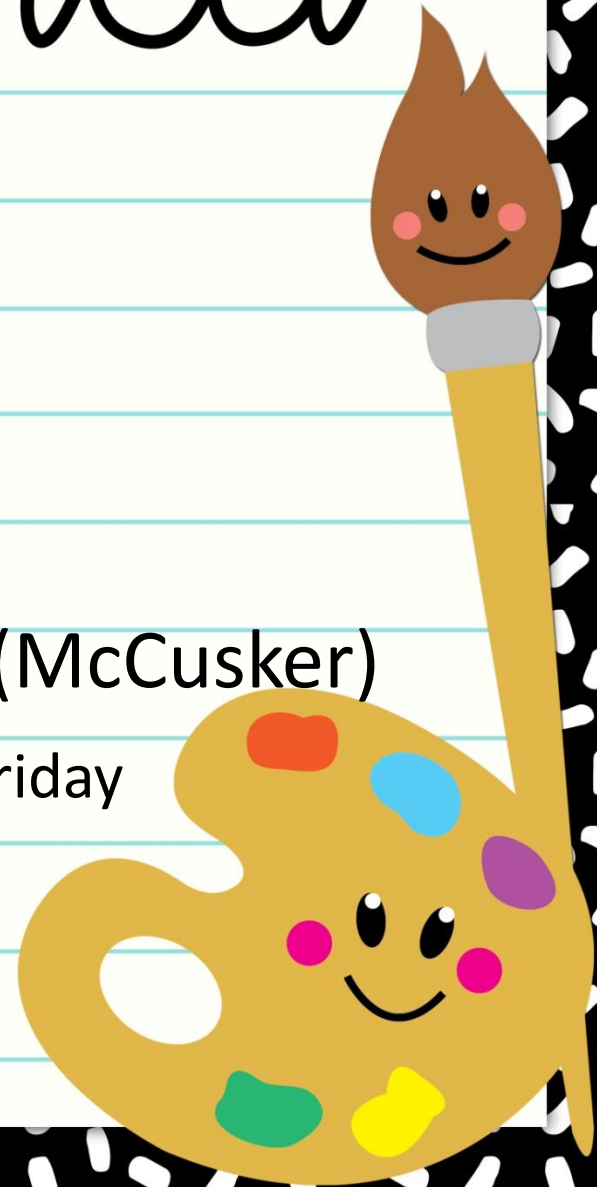


Mrs. Adams' Pre-K Schedule	MONDAY	TUESDAY	WEDNESDAY	THURSDAY	FRIDAY
8:05	Arrival & Morning Bins				
8:35	Morning Meeting				
8:45	Fundations, Heggerty, E.L.A Whole Group & Small Group Rotations				Fri-Library 9:05-9:35
10:15	Content- S.S, Science, Health				
10:45	LUNCH (10:40 arrival)				
11:15	RECESS				
11:45	Social Emotional				
12:05	Health (in room)	Art	P.E.	P.E.	Music
12:35	SNACK				
12:45	REST				
1:15	Math & Small Group Rotations				
2:15	Stations				
2:45	Closure & Pack Up				
3:05	Dismissal				

Special area

- M- Health (Diehl)
- T- Art (Dieter)
- W- P.E. (Zepp)*Tennis shoes
- Th- P.E. (Zepp)*Tennis shoes
- F- Library (Myers) & Music (McCusker)

*Please send books to school each Friday
in order for your child to be able to
choose a new book.



school policies

P.E. and daily outdoor play serve as an important function in the development of large gross motor skills as well as socialization. 😊

***We will make every effort to go outside. Please wear sneakers or closed-toe shoes daily.**



lunch policies

All Pre-K students are able to buy lunch daily at no cost (Pre-K only)

*You may pack your child lunch daily

SNACK 

*Please pack your child's snack separate from lunch, if packing.



BREAKFAST

*Free and reduced meals- CCPS website to apply
[Food Services - Carroll County Public School District](http://carrollk12.org)
 [\(carrollk12.org\)](http://carrollk12.org)

*Please let me know if your child will be eating breakfast at home or purchasing breakfast in the morning.



behavior policy



Please sign and return: _____ Date: _____

_____ 's Think Sheet

I chose to

 not keep my hands to myself	 talk and interrupt others	 run in the classroom	 play in my seat
 not stay in my seat	 be an unkind friend	 not follow directions	 play unsafe on the playground

Next time, a better choice would be to

 keep my hands to myself	 be a good listener	 walk	 sit nicely
 stay in my seat	 be a nice friend	 follow directions	 play safely

© Thomas T. Fox

Our Curriculum

Math Units:

1-Sorting, Classifying, and Data (shapes, graphs)

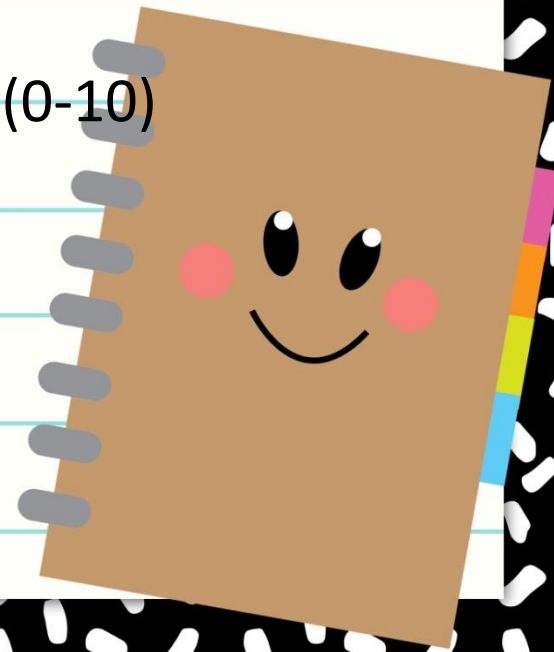
2-Understanding Number Relationships (0-5)

3-Shapes, Patterns, and Positional Language

4-Measurement

5-Understanding Number Relationships (0-10)

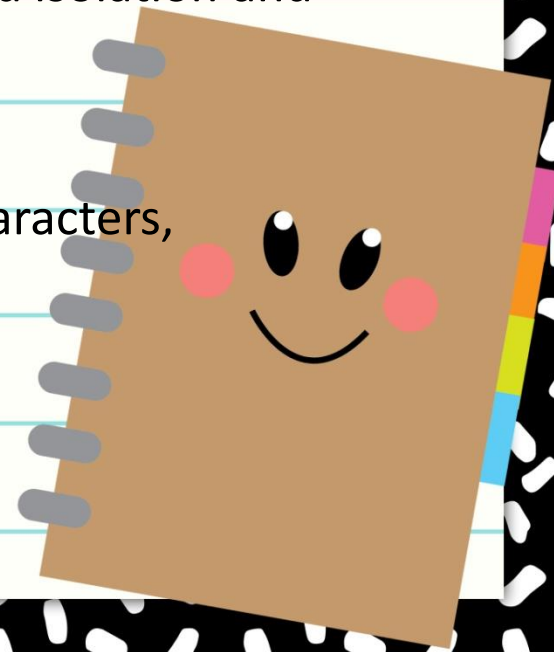
6-Addition and Subtraction



Our Curriculum

English Language Arts:

- **Phonics**
 - Letter identification, sounds, formation
- **Phonemic Awareness**
 - Rhyming, syllabication/segmenting, sound isolation and manipulation
- **Reading**
 - Read aloud (story elements: including characters, setting, problem and solution)
 - Asking and answering questions
 - Recalling major events in sequence



Our Curriculum

- **E.L.A-Small Groups**

- Parts of a book (text, page #, title, front cover/back cover,
- Tracking
- Writing(Fine motor)-names, letter formation, early writing
- Intro to sight words and early decoding skills

Science Units

1-Colors

2-Shadows

3-Sound

4-Ramps

5-Plants

6-Water

7-Pets





Homework policy

Activity Calendar (sent home monthly)

*Please complete activities nightly. Please send back at the end of the month.

Ways to help at home

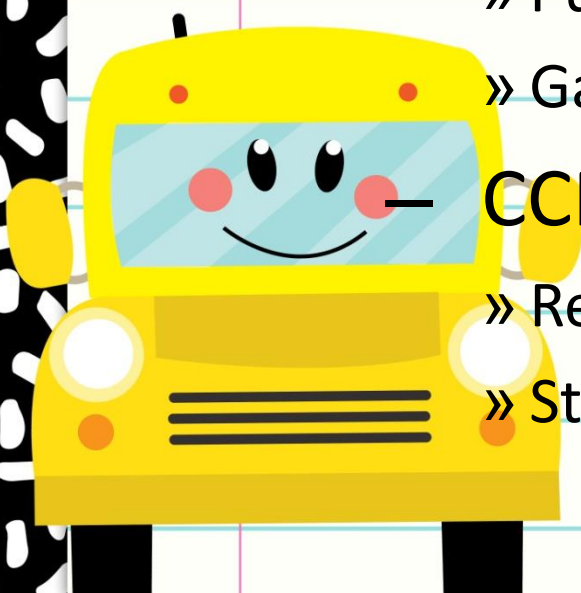
*Name practice (recognition & writing)

*Letter/number I.D



class field trips

- Fall- Farm (Buppert's?)
- In School-
 - U. of Md. SNAP-Ed Program
 - » Puppet shows (healthy living)
 - » Gardening
 - CCPL (Storytime Express)
 - » Read-aloud
 - » Students choose books for classroom library



contact **INfORmation**

*Email: NicoleAdams@carrollk12.org

*LSE Phone: 410-751-3280



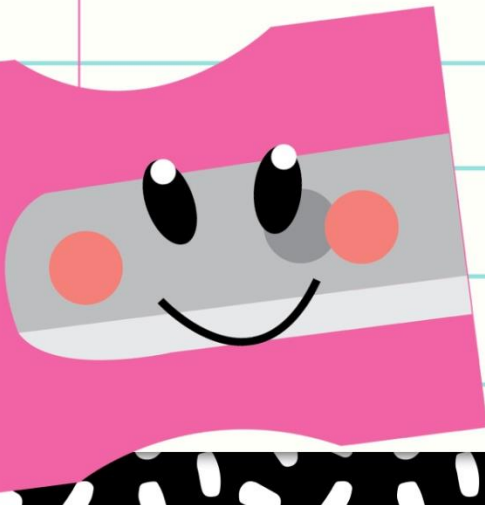
Please come visit with
your child between 2-3pm

Friday for

Sneak-a-Peek and

Popsicles with

Principals!



thank you!

for

COMING

